

MORETON BAY REGIONAL COUNCIL

# SAMFORD VILLAGE MAIN STREET STREETScape UPGRADE WORKS

ENGAGEMENT AND CONCEPT DESIGN

JULY 2020



# 01 EXECUTIVE SUMMARY

## Samford is an engaged and diverse community who feel passionately about their Village and Main Street.

Its a much loved local place - evidenced by the community's extensive and detailed responses to Main Street engagement and consultation. Resident's are both proud of the centre and keen to see it further improve whilst retaining its best parts and its **contemporary rural character**. Its a place that has **real moments of delight** - physical spaces that show a depth of caring and design acumen. There are elements of characterful design within Samford and many cues to its heritage and past. The Village has a strong community foundation. Despite its small size there are an abundance of well run community groups and residents from all backgrounds who contribute time and effort to making Samford such a unique and special place.

Many of the ideas put forward by stakeholders are both sensible and actionable and these include staging, planting, material palettes. Some suggestions fall outside of the scope of streetscape revitalisation and would entail further discussions with stakeholders including businesses, land owners and state departments such as Transport and Main Roads.

Whilst the quantative results provide a rationale from which decisions can be made within Samford Main Street, the qualitative results provide the richness to design. These are ideas that the community have provided that can not only be implemented but that will also provide ongoing activation and moments of surprise and delight.



# KEY MESSAGES

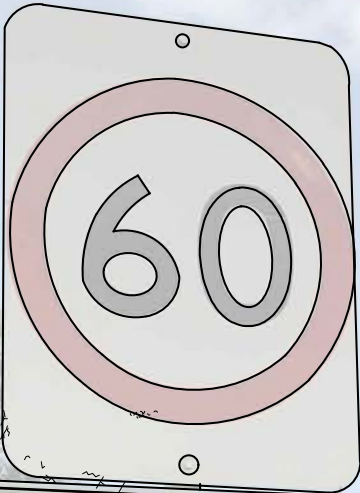
Samford residents have diverse views, but a series of key and consistent themes and desires for Samford Main Streets were clear. These were to:

- *Create a street for strolling- A place to linger and enjoy*
- *Create a destination - A place that people associate with celebration and excitement*
- *Celebrate Contemporary Rural Charm - Enhance the familiar and friendly whilst being relevant to today*
- *Green the street - Reflect the landscape and greenery of the D'Aguilar Ranges, and acknowledge the agricultural history of Samford through a mix of planting and material palettes*
- *Retain the eclectic - Don't create a 'blanket design' - integrate moments of delight and interest*
- *Create a productive place - Celebrate local business, entrepreneurship and rich agricultural heritage - and look to the future, what are the new productive places?*
- *Remember the parking - With clever management of carparking and more carparking overall in the precinct but in locations that have perhaps not been considered in the past...*

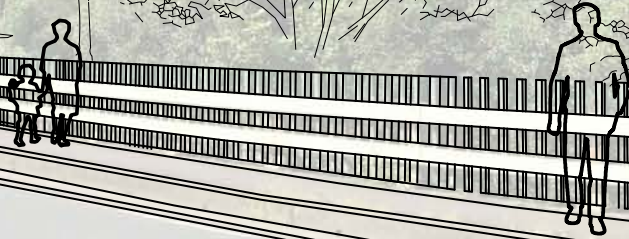
# 02

# ENGAGEMENT PROCESS





M FORD CREEK



# 02

## ENGAGEMENT PROCESS

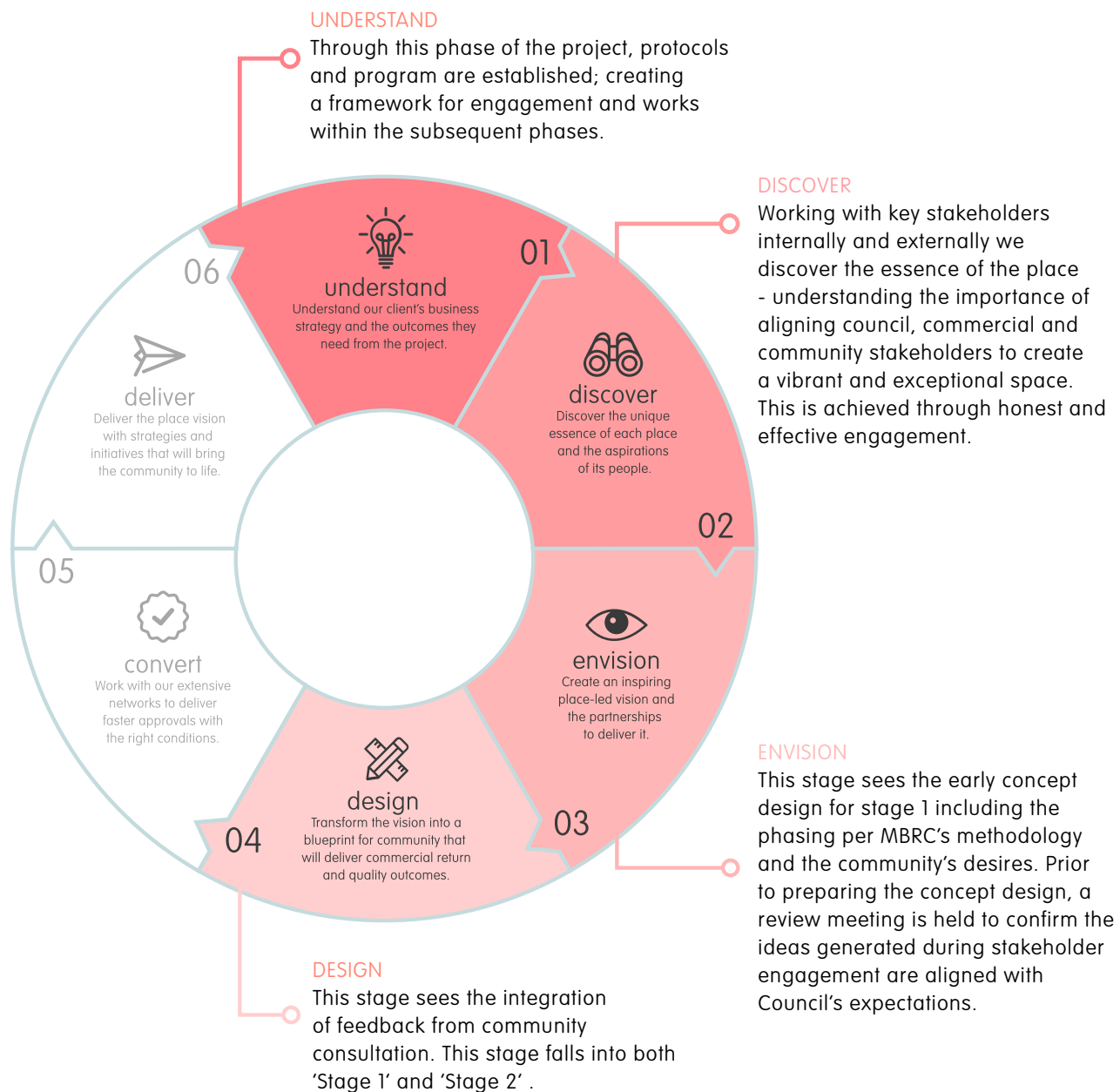
### The Great Places process.

RobertsDay undertook a great places engagement process which follows a place making approach. At RobertsDay, we define place making as a collaborative and multi-disciplinary process which focuses on people and draws from a place's unique qualities. It creates great places which are lovable as well as liveable, and ensures that cities and communities are equipped for the future.

Whilst 'liveability' is the benchmark of 21st century master planning, RobertsDay believe that a place-based approach can also promote 'loveability' – supporting places which people have a sense of ownership over, and which people want to return to. Lovable places are more authentic, more meaningful, and more resilient, because they support socially sustainable communities.

Place making is about more than simply design, engagement, programming, or branding but about how all of these things work together and speak to each other, providing the tools to support places and communities into the future.

We begin with understanding, moving to discover and





# COMMUNITY ENGAGEMENT

A series of photos were taken of sections of the street and a white opaque transparency and black linework applied for use in the survey. This was done in order to approximate the 3D approach that we would have used within the workshop seeing as the photos offered a perspective view of the street.

The survey or questionnaire began with broad questions asking the community what they most liked about Samford Main Street and what areas most needed attention. The questionnaire then asked residents to identify which part of the street was most in need of intervention. Sections of the street were then shown (the perspective images) and the community asked what they would like to see in these spaces, what worked and what did not. Finally, the survey was rounded out with a question asking if they would like to add any further information.

These images were also disseminated to local schools should any students like to draw their ideas for the street.

In addition to a broad survey, interviews with key stakeholders within Samford were undertaken. These ranged from culturally important organisations such as the CWA, Farmers Hall, RSL and Progress Association to local businesses within the street such as the Bendigo Bank, Canter and Colt, the Snack Bar and so forth. Interviews ranged from in-person, to phone and occasional email submissions. Naturally not all businesses or organisations had capacity or the desire to take part, but a large number were able and some responses were extensive and detailed.

In order to reach as many community members as possible the details of the survey were disseminated through local newsletters including school newsletters, by Council, by local Councillor Darren Grimwade and shared through various Facebook pages. The details of project manager Catherine Simpson were also shared on the Facebook group page for those wanting to get in touch personally.

The results of the consultation have been synthesised and collated within the following pages. Over 650 people took part with 344 completing the entire survey to the end (many questions of the 13 were optional).

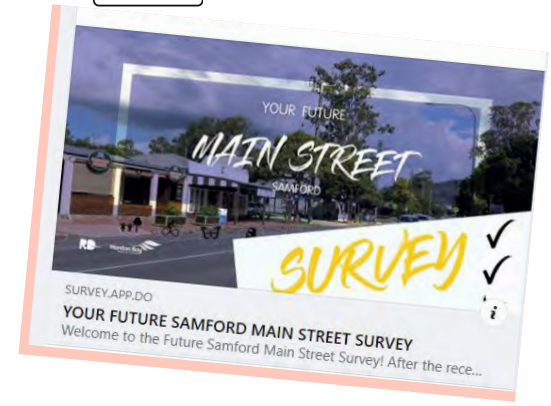
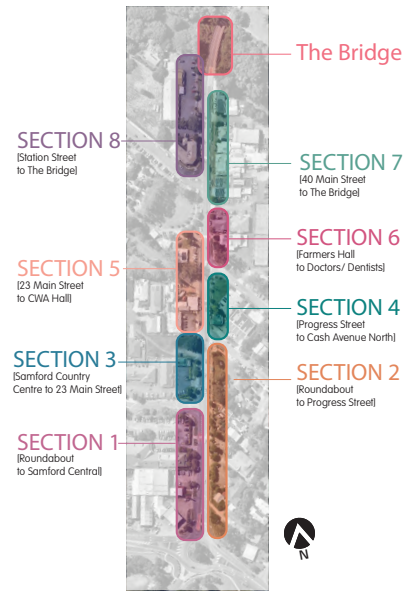
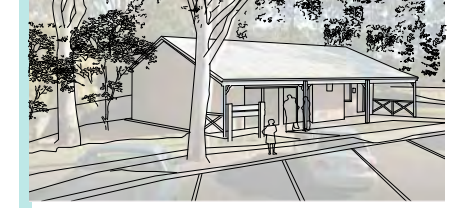
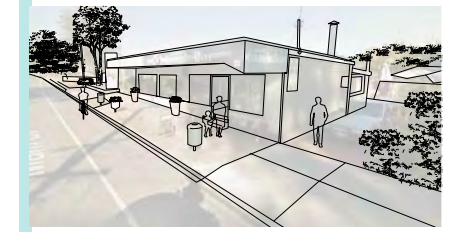
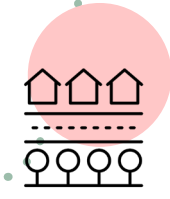
With a population of around 12,000 in the Samford Valley this means around 1 in 20 or 5% of Samford residents took part.

We received many responses that were detailed and extensive. Some were focused on specific areas, issues or features. There are some ideas that received broad consensus and yet other parts of the street that residents are both fans of and less keen on. We also received some very interesting ideas for the future of Main Street - representative of the diverse opinions, perspectives, and aspirations of Samford.

All feedback has been given to Council and is contained in Appendix 2.

In addition, just under 20 phone or in person conversations were had with businesses and organisations within the street. These conversations were collated within a spreadsheet attached within the Appendices.3.





03

# RESULTS OF CONSULTATION





SANFORD  
FARMERS HALL

←  
Icon of a person

# 03 RESULTS

## WHAT DO PEOPLE LOVE ABOUT MAIN STREET?

A diverse number of features were highlighted a number of times including:

- John Scott Park
- the charming village feel
- the mix of eclectic cafes, stores and businesses
- its country feel
- the mature trees
- the greenery and planting
- the friendly people
- the pub
- the Farmers Hall
- the history
- the vibe (or atmosphere/ambiance)
- the wide footpaths (it's pedestrian and pram friendly)
- the pedestrian crossings



A feature that appeared on both the most liked and least liked list included:

- the pedestrian crossings (see Section 4.0 Engagement Results - Specific Elements)

Suggestions that were less common included:

- the old fashioned lamp posts
- the historic signage
- the cleanliness
- the small town feel
- no traffic lights
- no big chains such as McDonald's or Woolworths



In summary a number of elements within Main Street were highlighted as features by the community with broad consensus around the charm of the village, the planting and trees, its historic or rustic feel, the mix of cafes and shops, the wide footpaths and John Scott Park.




*'Not too much- I think it lacks personality in some areas, in others it looks okay. I like the info posts that were put in a few years ago to let you know what was there. I think businesses like Makers on Main, Little Tree and the RSL have tried to create a nice visual image. The gardens on the edge of John Scott park are nice too. The Samford Hall is just lovely and pays homage to days gone by.'*

## WHAT DO SAMFORD RESIDENTS THINK COULD BE IMPROVED WITHIN MAIN STREET?

Elements that Samford residents didn't like or thought could be improved within the Street included:

- the amount of traffic
- the speed of vehicles – considered too fast
- the amount of trucks travelling through
- turning out of Station Street
- lack of parking
- too many parking bays on Main Street
- visibility issues
- its 'sameness' or lack of character
- a lack of greenery and shade
- the removal of gum trees and large trees over previous years
- narrow footpaths
- lack of seating
- lack of cycle infrastructure
- 'ugly' buildings

- 
- *A bypass..*
  - *Less cars, traffic*
  - *Not sure, it's congested on weekends but that's to be expected*
  - *Remove power lines and encourage preservation of historical feeling. Replace modern lamp post with more period ones.*
  - *I would like to see Samford village have a lot more shade, more plantings (including herbs and edibles), more bike facilities and drinking water. It would be good if, somehow the design could encourage walking the full length, rather than just small sections of the village. I know people drive to the supermarket the get back in the car to drive to the post office etc. Madness! Make the village walkable and cool.*
  - *Footpath design*
  - *Pathways & gardens*
  - *Street scape, improved foot paths, improved off street parking, tree plantings*
  - *More plants and trees.*
  - *less traffic*

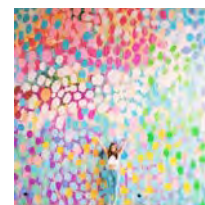
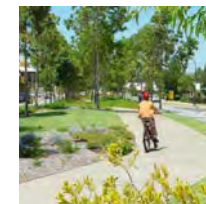
# 03 RESULTS

## WHAT SUGGESTIONS DID RESIDENTS HAVE FOR SAMFORD MAIN STREET?

As part of their responses a number of residents made detailed suggestions for Main Street. This information also includes the last question of the survey.

The most common suggestions were:

- increase the amount of greenery– suggestions related to this included planting more street trees and shrubs including edibles, herbs and natives, flowers
- green the shopfronts through hanging plants, pot plants and raised garden beds
- ‘cool the street’ through more awnings and trees
- more and better parking; suggestions included adding further parking to side streets
- reduce parking adjacent the crossings to offer better visibility to motorists and pedestrians
- reduce traffic and congestion – suggestions related to this included a bypass, reduction in on street right turns, reducing the number of crossings or crossing alterations,
- more bins and seating
- improve building facades
- add cycle infrastructure including bike lanes, bike racks, etc
- add more art in the street. Artworks suggestions included murals, sculptures and integrated art
- increase the lighting in the street through fairy lights and use more of the heritage lampposts
- improve the paving – suggestions related to this included new pavers (instead of only plain concrete paving), a more cohesive approach and by referencing areas that work well like John Scott Park or the south eastern verge of the street (where the vet, cafes and the RSL is)
- acknowledge the traditional custodians of the land and indigenous history somewhere within the street as well
- more drinking fountains/water bubblers



## UNIQUE SUGGESTIONS



- *Add a gazebo to John Scott Park for bridal photography*
- *Add electric bike stations*
- *More street trees and shade. Future developments to vacant sites on main street to activate the street edge and have parking to the rear (if appropriate). A new edge/ arbour (incorporating seating, shade, perhaps display opportunities) to help unify main street particularly on the Drakes shopping centre/ JS Park side of main street. Improve pedestrian crossing at Kath Fitzgerald Dr. Widening of the pedestrian crossing at Samford Creek bridge/ gate way to the village ( perhaps including viewing platform and access down to the creek for future creek walk- ). A landmark sculptural sign/ folly/ lantern advertising what is happening in the village/ valley and perhaps what the local businesses have to offer- possibly located on the edge of JS Park on the Cash Ave N axis. Creating a beautiful forecourt to the CWA as well as beautifying the existing building.*
- *Fairy lights to light it up at night like Noosa Main Street. Country vibe like at Montville with cobblestones. Cars to not park close to pedestrian crossings. Encourage more specialty shops, gift shops, shop facades to be prettier. There is no consistency. Definitely colour and streetscape plants. Airlie beach streetscape is a great example, but of course then put in a ring road for heavy vehicles do more pedestrian friendly.*
- *The pavement for pedestrians. Additional seating and better tree plantings along the street. Some more drinking fountains for people to refill drink bottles after their drive out after exercising on the Samford loop. Some more information about the history of the area including indigenous stories and acknowledgement of country and traditional owners.*
- *More art, paved paths, trees, little areas to sit. Also the bridge to have a large path either side to connect to Millen Farm and the markets.*
- *More greenery. Improving the look of some of the shop fronts e.g. the curry shop / pizza shop.. this is very modern looking compared to other buildings in the street. Perhaps for future developments try to ensure the look of the building ties in with the village feel and surrounding buildings.*
- *Many patches of dead or failing grass on the verge could be re-planted with feature plants. Impose 3hour parking the length of Main St so the "all day parkers" who share ride to the Station at Ferny Grove don't saturate the available parks. Council should purchase the remaining vacant block of land with the amazing mature Grevillea Robusta as park or landscaped common ground...*

# WHAT PEOPLE LOVE

THE CHARMING  
VILLAGE FEEL

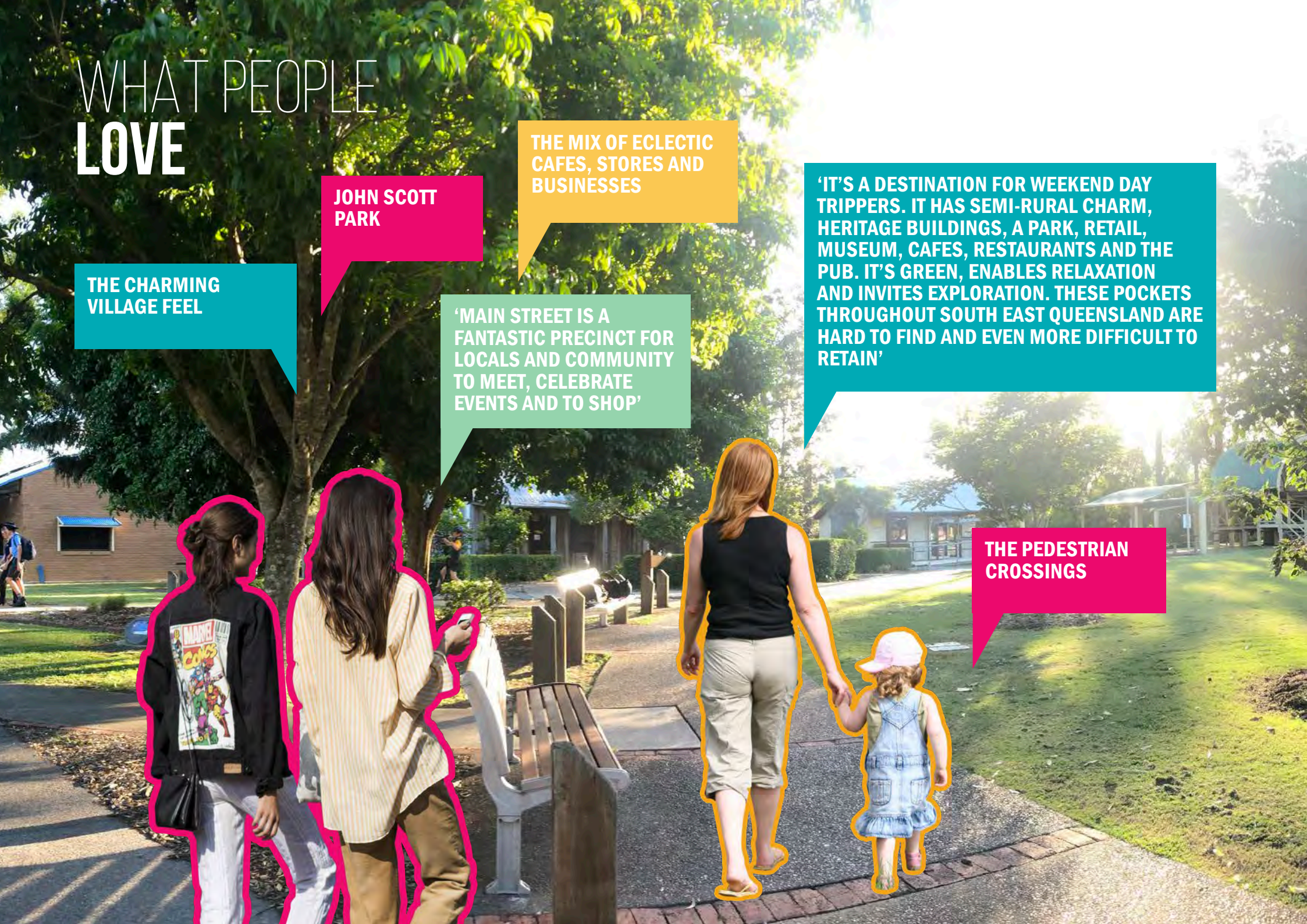
JOHN SCOTT  
PARK

THE MIX OF ECLECTIC  
CAFES, STORES AND  
BUSINESSES

'MAIN STREET IS A  
FANTASTIC PRECINCT FOR  
LOCALS AND COMMUNITY  
TO MEET, CELEBRATE  
EVENTS AND TO SHOP'

'IT'S A DESTINATION FOR WEEKEND DAY  
TRIPPERS. IT HAS SEMI-RURAL CHARM,  
HERITAGE BUILDINGS, A PARK, RETAIL,  
MUSEUM, CAFES, RESTAURANTS AND THE  
PUB. IT'S GREEN, ENABLES RELAXATION  
AND INVITES EXPLORATION. THESE POCKETS  
THROUGHOUT SOUTH EAST QUEENSLAND ARE  
HARD TO FIND AND EVEN MORE DIFFICULT TO  
RETAIN'

THE PEDESTRIAN  
CROSSINGS





**THE FRIENDLY PEOPLE**

**'WE HAVE LIVED IN SAMFORD FOR OVER 30 YEARS. OUR FAMILY STILL COME BACK TO MAIN STREET BECAUSE IT'S STILL HAS THE FEELING OF A VILLAGE AND COMMUNITY'**

**NO BIG CHAINS SUCH AS MCDONALDS OR WOOLWORTHS**

**THE HISTORY**

**THE PUB AND THE FARMERS HALL**

**THE SMALL TOWN FEEL**

**THE VIBE (OR ATMOSPHERE/ AMBIANCE)**



# 03 RESULTS



## SPECIFIC ELEMENTS



### Parking

Parking was seen by many residents as an issue within Samford Village with some feeling that it is not sufficient.

A number of residents felt that there should be fewer parking bays within Main Street with more provided within the side streets and behind Main Street and some suggested time limits. For the purposes of the Main Street revitalisation we have not recommended decreasing the parking other than in one specific parking bay where it affects the visibility for motorists and safety of pedestrians.

- no parking near pedestrian crossings



### Traffic

Increasing amounts of traffic are being noted anecdotally through Main Street. We have explored options for easing congestion which Council will discuss with Transport and Main Roads. See traffic plan.

Suggestions around traffic and congestion included the provision of 40km/hr zones and exploration of a bypass.

- Limit or deter the large trucks that travel through the village
- The traffic needs to be slowed and bike lanes installed



### Crossings



The pedestrian crossings received a diversity of opinions with residents expressing both appreciation and thanks for their addition and frustration by motorists at the requirement to slow down. A number of residents noted sight line issues in relation to the crossings and suggested reducing adjacent parking bays in order to relieve this issue.

On balance the crossings appear to be a successful addition that have slowed traffic for the benefit of pedestrian safety. We have investigated the removal of some parking bays in order to mitigate sightline issues for vehicles.

- There are often complaints about pedestrians slowing traffic but as a resident this is insignificant. Delays are minimal and pedestrians should be encouraged. The entire western side of the road from Station Street to the bridge is in need of significant improvement.
- The crossings generally provide safe places for people (particularly families, aged & disabled) to cross provided vehicles observe them. They also slow traffic down through the main street to allow better access to vehicles entering the main street from Progress, Cash Ave N, Station St etc'



## SPECIFIC ELEMENTS



### Trees and planting

Many residents felt that the street was too hot and could be planted with more street trees to provide shady walkways. Tree planting suggestions included:

- *Hoop pine*
- *Buckinghamia celcissima (Ivory Curl tree)*
- *Jacaranda*
- *Blue quandong*
- *Herbs*
- *Grasses*
- *Roses*
- *Bush tucker plants*
- *Native planting*
- *Pandorea vines*



Planting suggestions included:

- *Edible plantings,*

Planting suggestions included hardy herbs, edibles as well as native plants, groundcovers in areas that require good visibility and shrubs for bees and birdlife in select locations.

Hanging plants were a popular option and suggested for awning locations and some key spots within the street. This is something that would be for building and business owner's discretion.

- *More greenery.*
- *Gardens / flowers / native cottage feel*
- *Flowers.....more flowers!!! Make it pretty.*
- *Need to beautify the street, more plants/flowers/art installations-*
- *need to make it a real village feel*
- *More planters and hanging baskets so we can have a street full of blooms*

### Footpaths and paving

Many in the community feel the footpaths could be widened in places. Residents commented on cracked and inconsistent paving in places and the need for a cohesive approach. Some residents liked the materiality of John Scott Park and the more recent south eastern section of the street with its eclectic use of pavers, aged brick and stained concrete.

- *'Footpaths should be wider.'*
- *Upgrade pathways*



### Art

Art within the street was a popular suggestion with residents suggesting drawing on local talent to make sculptures, murals and integrated artworks that could be used as part of a broader tourism strategy.

- *Samford has lots of local artists. Adding local sculptures and art to draw tourism. Making people want to walk the entire street, tying the theme the entire street. Example local artists Natureworks Pty Ltd, Phoenix Sculptures, Art Dinouveau.*
- *I think it could be given much more personality. Like Noosaville on the Sunshine coast. Planter boxes, interesting art pieces(we have such a fantastic Art community)Graceville shopping precinct has some lovely art pieces. Things that help create the feeling of a village and to make it more visually attractive which plants do*
- *make samford an arts and craft place for local artists. make it unique with art style street lights.*

# WHAT PEOPLE WOULD LIKE TO SEE

INCREASE THE LIGHTING  
IN THE STREET THROUGH  
FAIRY LIGHTS AND USE  
MORE OF THE HERITAGE  
LAMPPOSTS

'COOL THE STREET'  
THROUGH MORE  
AWNINGS AND TREES

IMPROVE THE PAVING  
SUGGESTIONS RELATED TO THIS  
INCLUDED NEW PAVERS

GREEN THE  
SHOPFRONTS  
THROUGH  
HANGING PLANTS

ADD CYCLE  
INFRASTRUCTURE  
INCLUDING BIKE  
LANES

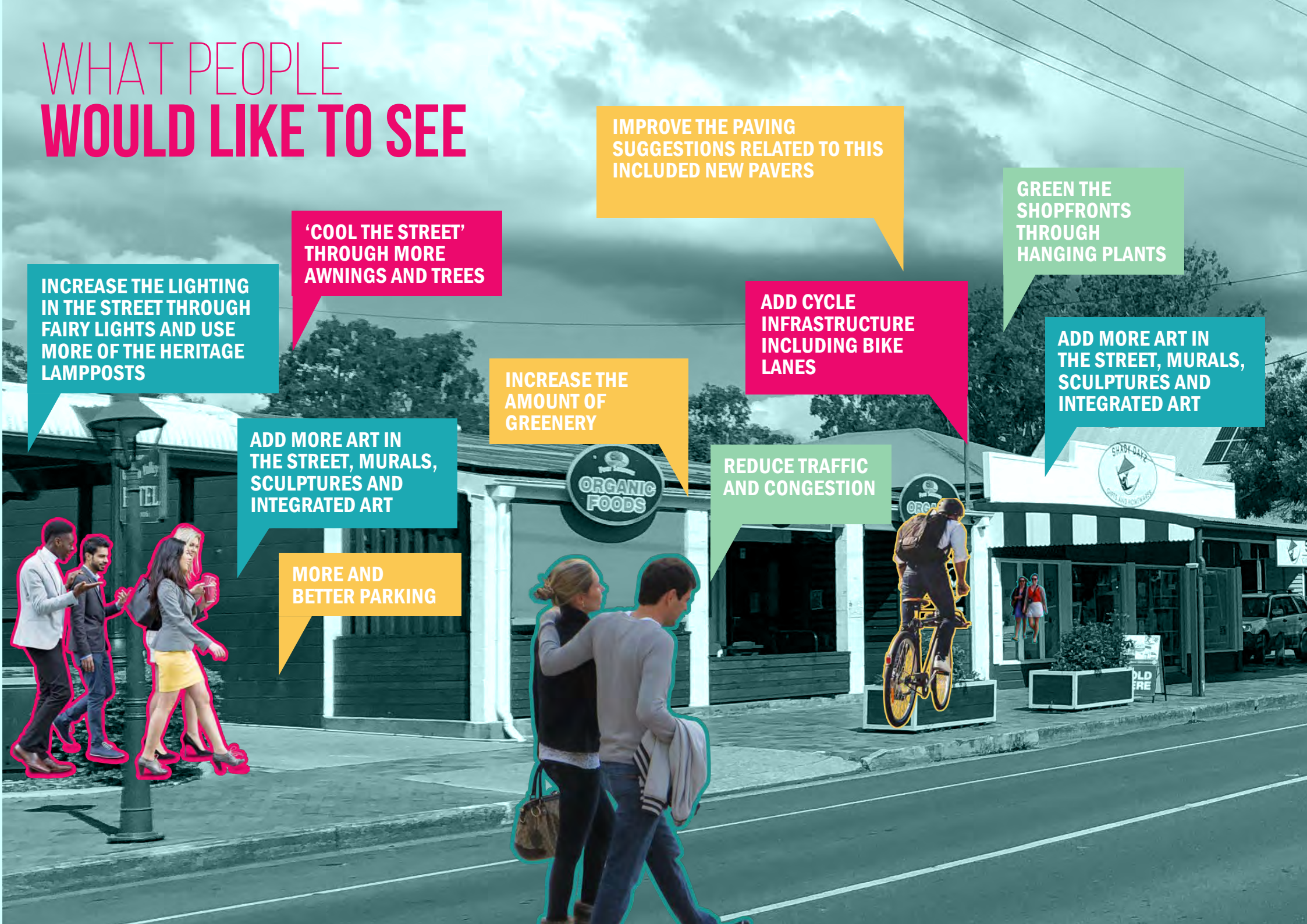
ADD MORE ART IN  
THE STREET, MURALS,  
SCULPTURES AND  
INTEGRATED ART

INCREASE THE  
AMOUNT OF  
GREENERY

ADD MORE ART IN  
THE STREET, MURALS,  
SCULPTURES AND  
INTEGRATED ART

REDUCE TRAFFIC  
AND CONGESTION

MORE AND  
BETTER PARKING



Samford residents are passionate about greening their street.

In survey, residents mentioned the word **green** 156 times, the word **garden** 309 times, **tree** 43 times and **trees** 399 times.

# 03

## STREET SECTIONS & PHASING

### “Which section is most in need of improvement?”

Residents were asked to nominate the areas of the street they felt most required improvements. The following were clearly identified from most to least in need.

There was a clear split between the top 5 within the western side of the street and the bottom four within the eastern side of the street.

- 183 votes: **Section 5** – (The CWA, Snack Bar to 23 Main Street)
- 174 votes: **Section 8** (Station Street to the Bridge)
- 172 votes: **Section 3** (Samford Country Centre to 23 Main Street)
- 163 votes: **Section 1** (Roundabout to Samford Central)
- 161 votes: **The bridge**
- 134 votes: **Section 4** (Progress Street to Cash Avenue North)
- 126 votes: **Section 7** (40 Main Street to the bridge)
- 115 votes: **Section 2** (Roundabout to Progress Street)
- 113 votes: **Section 6** (Farmers Hall to Doctors/Dentist)

\*For conciseness, the survey did not ask for detailed suggestions around sections 4, 2 and 8 however suggestions for these areas have been collated from the overall survey.

**SECTION 8**  
[Station Street to The Bridge]

**SECTION 5**  
[23 Main Street to CWA Hall]

**SECTION 3**  
[Samford Country Centre to 23 Main Street]

**SECTION 1**  
[Roundabout to Samford Central]

**The Bridge**

**SECTION 7**  
[40 Main Street to The Bridge]

**SECTION 6**  
[Farmers Hall to Doctors/ Dentists]

**SECTION 4**  
[Progress Street to Cash Avenue North]

**SECTION 2**  
[Roundabout to Progress Street]



# Phasing

RobertsDay recommend undertaking a phasing plan that follows in large part from community input. From an urban design perspective the community's perspective on phasing was both reasonable and informed.

Section 5 was seen as the most critical section of the street with adjacent areas section 8 and 3 following respectively. Therefore, subject to budget and costings we would advise focussing on this section of street and encompassing sections 8 and 3 as part of phase 1 or immediately succeeding in phase 2. If two sections can be phased together within budget we would advise taking this approach as opposed to a 'piecemeal' approach.

Phase 3 was identified as encompassing the roundabout to Samford Central and, - upon execution of phases 1-3 the western section of Main Street will have been completed.

The eastern side of Main Street begins with phase 4 - the Farmers Hall to Little Tree Bake House. The construction of the new pub will cause some impact on adjacent premises and in order to lessen further trader impacts it is prudent to begin this section upon its completion, beginning with section 6, moving northwards.

Finally phase 5 has been identified as the eastern section from the roundabout to Cash Avenue North.

## PHASE 1-2

Depending on the budget Section 8 and 3 occur either in Phase 1 or 2, with priority given to Section 5.

## PHASE 3

## NON-PHASED

THE BRIDGE

The bridge is TMR controlled and non-phased but significant.

## PHASE 4

## PHASE 5

SECTION 8

SECTION 7

SECTION 5

SECTION 6

SECTION 3

SECTION 4

SECTION 2

SECTION 1



"ALWAYS DESIGN A THING  
BY CONSIDERING IT IN ITS  
NEXT LARGER CONTEXT  
— A CHAIR IN A ROOM, A  
ROOM IN A HOUSE, A HOUSE  
IN AN ENVIRONMENT, AN  
ENVIRONMENT IN A CITY  
PLAN."

- ELIEL SAARINEN



# WHAT PEOPLE DONT LIKE

**NARROW FOOTPATHS  
AND LACK OF  
SEATING**

**TURNING OUT OF  
STATION STREET**

**ITS 'SAMENESS' OR  
LACK OF CHARACTER**

**THE AMOUNT  
OF TRAFFIC**

**THE SPEED OF VEHICLES  
CONSIDERED TOO FAST**

**'UGLY  
BUILDINGS'**

**THE REMOVAL OF GUM  
TREES AND LARGE TREES  
OVER PREVIOUS YEARS**

**LACK OF CYCLE  
INFRASTRUCTURE**

**THE AMOUNT OF  
TRUCKS TRAVELING  
THROUGH**

**LACK OF  
PARKING**



# 03 ENGAGEMENT RESULTS

## SECTION 5 - CWA, SNACK BAR TO 23 MAIN STREET

### Most in need of improvement - Phase 1 of Streetscape revitalisation

From the Country Women's Association (CWA) hall to the Snack Bar and to the dining and takeaway area of 23 Main Street, residents had a number of suggestions.

In general, these centred around improving the appearance of buildings through built form interventions. Many residents felt the buildings were lacking in street appeal and that all buildings from the CWA to the Snack bar and barbers building to 23 Main Street could be improved upon through both renovation and planting to increase their street appeal.

Regarding the hall, planting suggestions included tying the hall back into John Scott Park with soft cottage garden plants, natives, herbs and edibles.

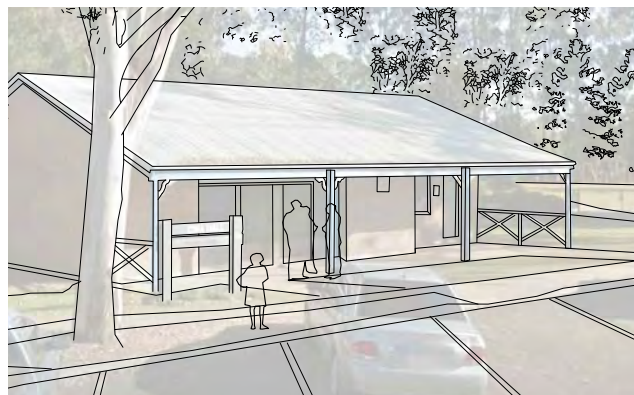
Drop off was recognised as important by a number of community members as the CWA outdoor space is used before and after school hours by local children as a set-down space.

Paving improvements were also recommended to tie this section into the rest of the street.

While a number of suggestions will be at the discretion of building owners the community's suggestions give license to tenants and owners to consider hanging plants, pot plants, murals and beautification works.

As the CWA hall is a community hall, community grants may be considered by the association for external renovation works.

"before" street perspective



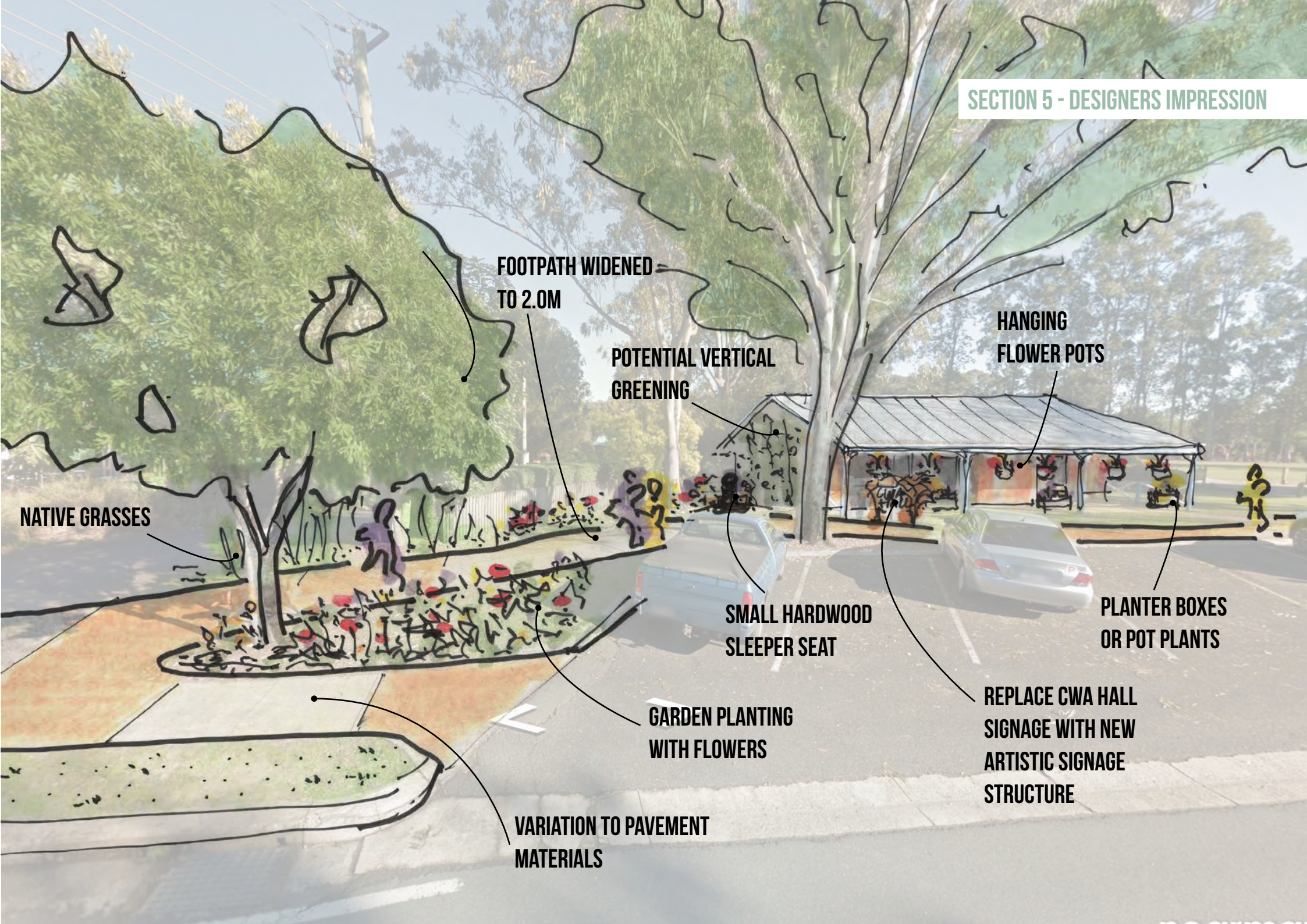
key plan



- *The parking spaces are essential... but could a landscape architect somehow blend the CWA building more into the adjacent John Scott Park???*
- *More greenery would be great to soften the ugly building (CWA)*
- *Incorporation of seating in these areas would be great. Incidental seating such as around planter boxes for example.*
- *This is a central area of the high street and therefore needs to be visually inviting and accessible. A mixed use additional small building could be used at community events and pop up shop . It could be made a lot more attractive than it is as a building. An architect would be good and create peacemaking opportunity for events, markets and street festivals. A hub on the corner.*
- *More planting, greenery. Give the building a makeover and some more country charm*

*More planting, greenery. Give the building a makeover and some more country charm*

**SECTION 5 - DESIGNERS IMPRESSION**



**FOOTPATH WIDENED TO 2.0M**

**POTENTIAL VERTICAL GREENING**

**HANGING FLOWER POTS**

**NATIVE GRASSES**

**SMALL HARDWOOD SLEEPER SEAT**

**PLANTER BOXES OR POT PLANTS**

**GARDEN PLANTING WITH FLOWERS**

**REPLACE CWA HALL SIGNAGE WITH NEW ARTISTIC SIGNAGE STRUCTURE**

**VARIATION TO PAVEMENT MATERIALS**

# 03

## ENGAGEMENT RESULTS

### SECTION 5 - CWA, SNACK BAR TO 23 MAIN STREET

#### Most in need of improvement - Phase 1 of Streetscape revitalisation

Residents had similar sentiments around the Snack Bar and barber as to the CWA, - feeling that the buildings street appeal could be improved through new planting, hanging baskets, pots plants and through tying the building into the adjacent nursery through an overall 'green treatment'

- *Hanging plants off the awning, green green green and again fairy lights... light it up Samford (on Snack Bar and Barber's building)*
- *Would be great to see some cafe seating but that's probably not in scope or ideal for a snack bar. Some seating and upgrade to the pavers would be good. Some gardens/planting to separate the road and footpath. The next section (Indian restaurant, market burger, etc.) could definitely use some work. Car park is ugly and hard to get in and out of. Concrete driveway could use an upgrade. Updating the old gardens and putting in some new ones to separate the car park and the footpath would be good. Hide those bins.*
- *Garden beds along the whole shopfront area. A wall mural?*

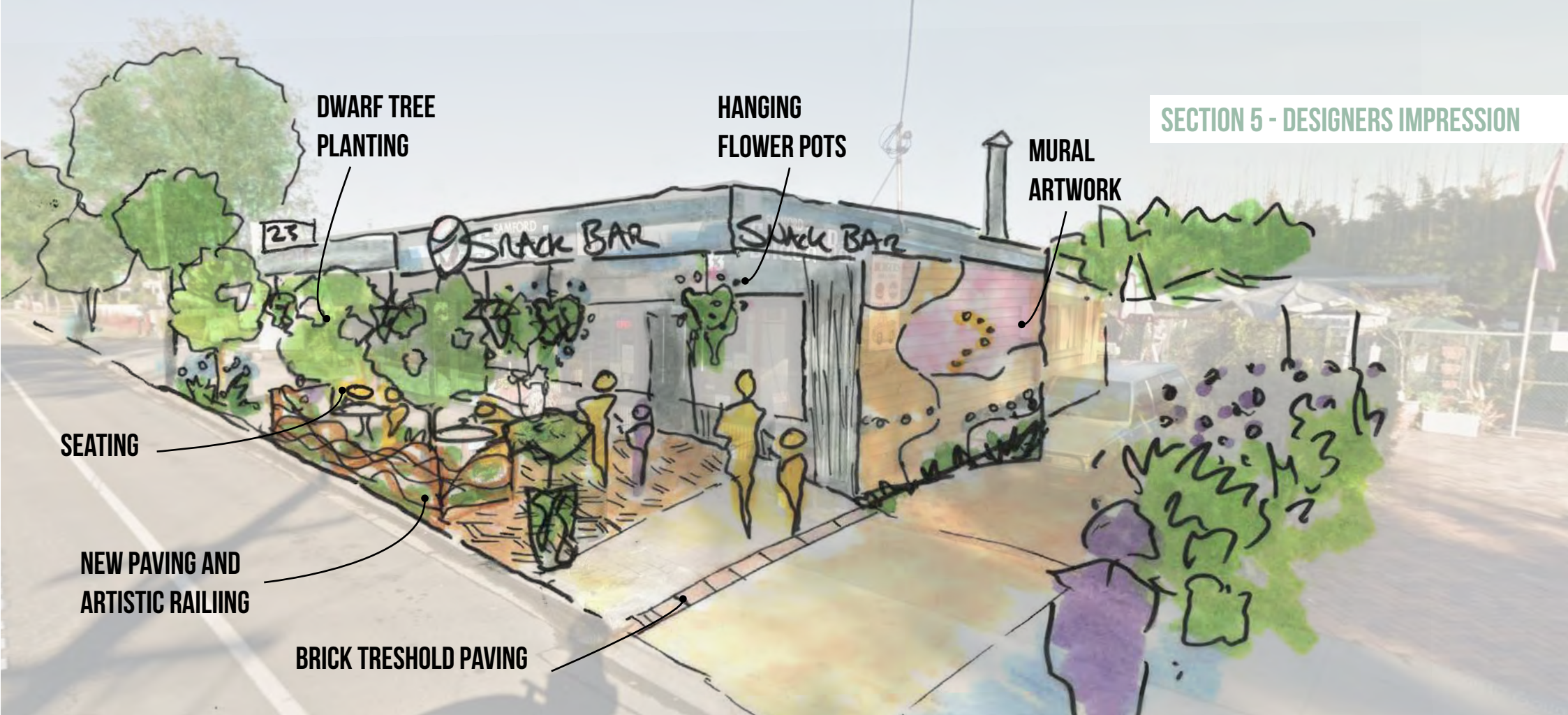


key plan



*Garden beds along the whole shopfront area. A wall mural?*

SECTION 5 - DESIGNERS IMPRESSION



*Hanging plants off the awning,  
green green green and again fairy  
lights... light it up Samford (on  
Snack Bar and Barber's building)*



# 03 ENGAGEMENT RESULTS

## SECTION 8 - STATION STREET THE BENDIGO BANK TO THE BRIDGE

### Phase 1 – 2 of Revitalisation

This section – and in particular the street corner and adjacent landscape was considered a ‘key corner’ to Main Street. Residents expressed a desire to see embellished planting including trees and soft groundcovers in this space. The business itself expressed a desire to see edibles and herbs. Turning the corner, businesses along Main Street occupy a relatively narrow verge and interventions are likely to be small in this area whilst few suggestions were made to the northern section of street. We have recommended focussing on part of this site as part of phase 1.

- *Gardens would definitely soften the area and the idea of a herb garden appeals as it is a hospitality area predominantly.*
- *Yes joining up footpath needed. You can clearly see where people walk on grass there and have worn it away. Low plants would be greats. Herbs or any sensorial plants for kids to investigate and touch and smell.*
- *Needs turf replaced. Herbs would be nice but flowers also appealing*
- *Provide bike parking for the many push bikes that litter the area on weekends*

- *Definitely needs more colour added*
- *Edible gardens would be a great idea restating the sustainability focus of the new community hub*
- *Bendigo bank is an eyesore. Not sympathetic to their surrounds. They should consider their shop front. Not sure the footpath is an issue or worth investment unless unsafe?*
- *Plants are key and visitors think of Vegies and sustainable living when they come to the country. This is a great idea. This building is def one of the uglier ones!!*
- *Planting would be good and what about sculptures on this corner.*
- *yes- herbs, trees, shrubs- and art*
- *Yes, beautify. Herbs need to be cared for, suggest beautiful easy care plants*
- *The grass never grows particularly well there because of all the foot traffic and the corner looks a bit tired. Perhaps planting areas would remedy this.*
- *A very difficult order to soften. Perhaps some commissioned and sensible street art would be beneficial.*

*Planting would be good and what about sculptures on this corner?*

"before" street perspective



key plan



**SECTION 8 - DESIGNERS IMPRESSION**

**INCREASED STREET TREE  
PLANTING + VARIETY**

**ARTISTIC AND  
SCULPTURAL BENCH  
SEATING**

**BUILDOUTS REPLANTED  
WITH GREATER SPECIES  
DIVERSITY INCLUDING  
NATIVE FLOWERS +  
GRASSES**



*"Provide bike parking for the many push bikes that litter the area on weekends"*







# 03 ENGAGEMENT RESULTS

## SECTION 3 - COUNTRY CENTRE

### Phase 1 - 2 of Revitalisation

The Country Centre was a close third for the area seen as most in need of revitalisation with only two votes separating it and Section 8. We have recommended considering this section of street in the first or second phases of revitalisation.

"before" street perspective



key plan



- *A nice outdoor dining area would be good. Generally people like to sit out and enjoy the hustle and bustle of the main street*
- *More trees on the verge.*
- *Beautify, artworks, planting*
- *Park bench, replace grass with gardens and cobblestone paving*
- *Put seating out further near the pavement.. The foot traffic doesn't venture up from the park end and so the businesses in our area don't see as much traffic because they associate us more with drakes and Dr surgeries etc which aren't of interest to day trippers visiting Samford. Some kind of path too or trail that leads to our end..*

*A nice outdoor dining area would be good. Generally people like to sit out and enjoy the hustle and bustle of the main street*

**SECTION 3 - DESIGNERS IMPRESSION**

**TRIM UNDERSIDE OF EXISTING TREE CANOPY TO INCREASE VISUAL PERMEABILITY**

**REMOVE EXISTING FOOTPATH AND REPLACE WITH GARDEN PLANTING**

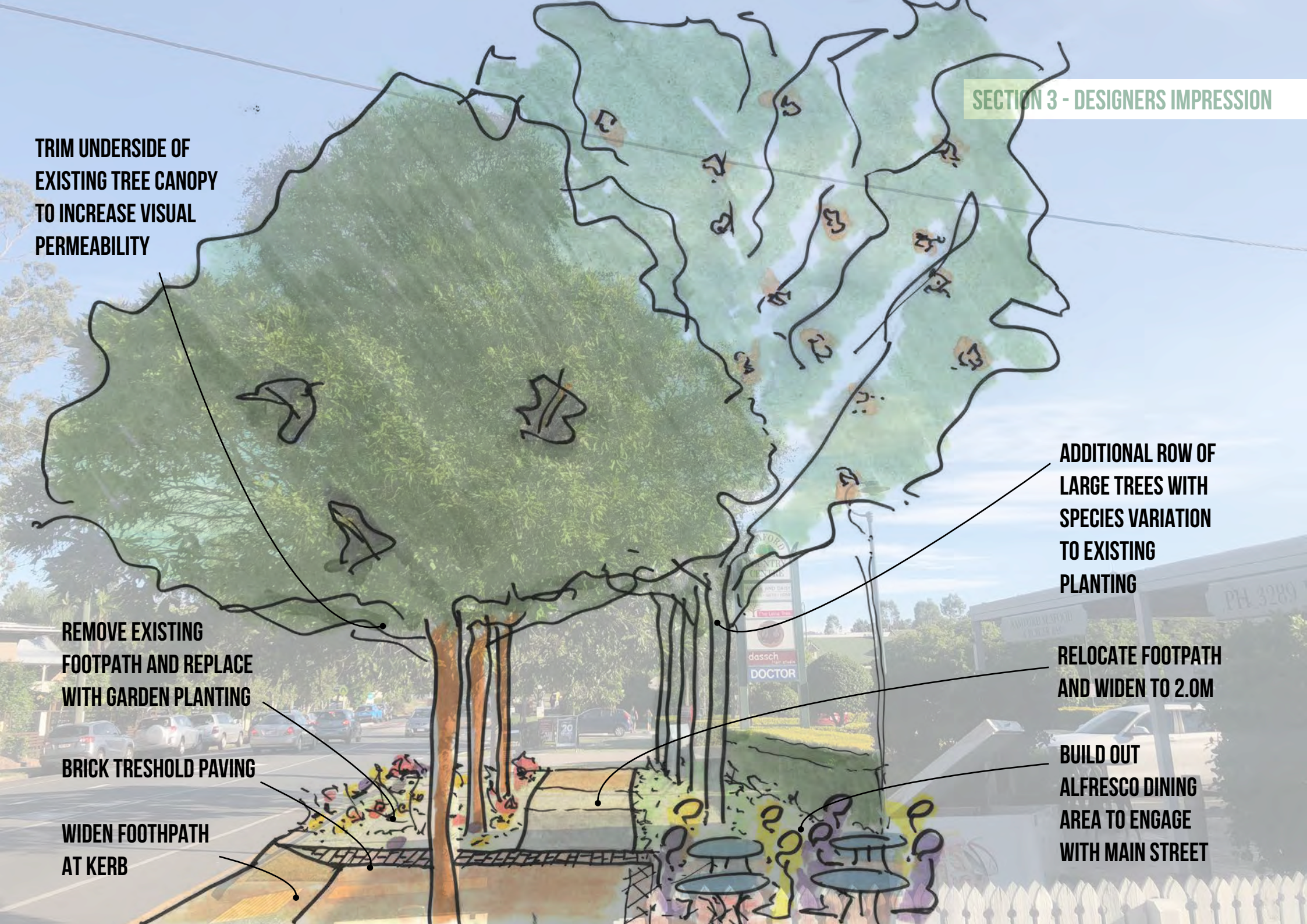
**BRICK TRESHOLD PAVING**

**WIDEN FOOTHPATH AT KERB**

**ADDITIONAL ROW OF LARGE TREES WITH SPECIES VARIATION TO EXISTING PLANTING**

**RELOCATE FOOTPATH AND WIDEN TO 2.0M**

**BUILD OUT ALFRESCO DINING AREA TO ENGAGE WITH MAIN STREET**



# 03 ENGAGEMENT RESULTS

## SECTION 1 - SAMFORD CENTRAL TO ROUNDABOUT

### Phase 3 of Revitalisation

The section of street that encompasses Samford Central was a high priority for the community with 163 votes. Depending on budget, it is probable that this section will fall into phase 2 or 3 of the overall streetscape revitalisation.

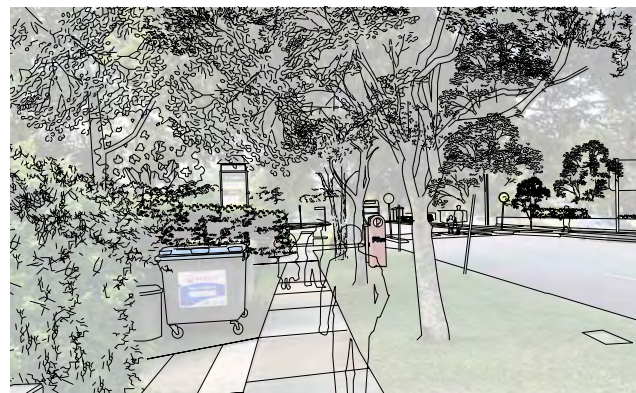
In general, community members wanted to see additional shade and tree planting, yet felt that it needed to be opened up more on the business owners side, with clearer visibility to the Centre through the thick hedging.

Residents requested wider footpaths and had suggestions for tables, chairs and benches to allow for informal gathering on the street.

Further suggestions included: bike racks, play spaces and community gardens.

A number of residents cited the bins as visually unappealing and suggested concealing them.

"before" street perspective



key plan



- *Open it up more and introduce paving for 3 meters of the verge? - cut trees back*
- *Remove industrial bin and make footpath and bike path spaces. nice lighting in the trees. make the pedestrian entrance to Samford Central easier - you kind of have to push through the hedge and priority is given to cars. This area is also the 'entrance' to the village, from the city. it needs to be open and welcoming - a place to park bikes in the shade.*
- *Conceal the bins. Include some seating around the trees. Widen the foot path.*
- *An edible garden would be fantastic*
- *Lots of herb*
- *Lovely olive trees or fruit trees would be fantastic*
- *Bike racks*
- *Good spot for some nooks where people could sit and meet/ply chess/study/work. Wifi access, public engagement in the space*
- *Seating under shady trees*
- *remove the bins to the back of the building! traditional 'gas style' lighting, a history of Samford trail and reminders of the past would be great*
- *Outdoor dining, benches, seating, better planting*
- *The Patisserie is another popular stop off for cyclists in the area. It would be great to see some more bike racks*
- *Raised beds with herbs and flowers. Community veggie garden. Micro park/playground with a swing/seating. Bench seats. More trees and greenery*

**SECTION 1 - DESIGNERS IMPRESSION**

**REMOVE PART OF EXISTING HEDGE AND CREATE ALFRESCO DINING AREA TO STREET**

**TRIM UNDERSIDE OF EXISTING TREE CANOPY TO INCREASE VISUAL PERMEABILITY**

**HANGING FLOWER POTS**

**BENCH SEATING**

**GARDEN BEDS**

**BIKE RACKS**

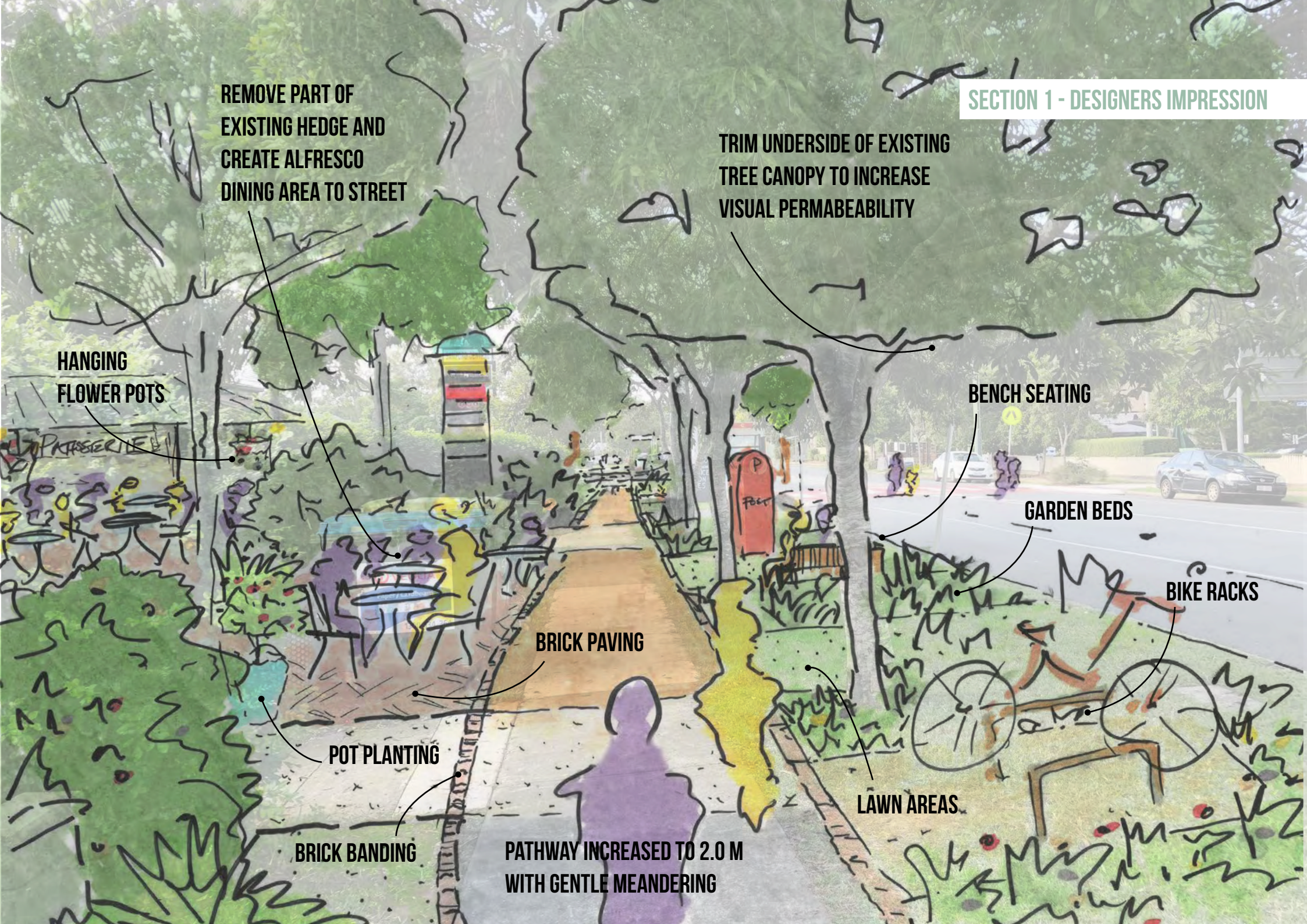
**BRICK PAVING**

**POT PLANTING**

**LAWN AREAS**

**BRICK BANDING**

**PATHWAY INCREASED TO 2.0 M WITH GENTLE MEANDERING**



# 03 ENGAGEMENT RESULTS

## THE BRIDGE

### Unphased - TMR controlled

There was strong sentiment by the community to see upgrades and revitalisation to the bridge both for safety reasons and as it is relatively dirty with low street appeal.

As the bridge requires investment and discussion by TMR this section of the street is not considered part of the revitalisation work. However RobertsDay strongly recommends that both Council and TMR investigate the safety issues raised by the community and investigate options for upgrading the bridge to ensure its fit for purpose and ongoing pedestrian and cycle use.

The bridge was consistently identified by residents as a hazard with a small and dangerous footpath that forces pedestrians onto the road when passing prams, wheelchairs and others on foot.

Residents also identified that the railings are dirty and dated and could be replaced.

"before" street perspective



key plan



Suggestions around exploring upgrading the bridge:

- *It is quite a narrow bridge to walk on especially with small children. A speed reduction before you cross the bridge would make this feel safer. A welcome to Samford sign would be good here. New paint and a tidy up would be ok.*
- *The bridge cuts off walkers/runners/cyclists from the other side by having no pathway to walk or ride. Otherwise 7/8 could use re-paving*
- *More plants/trees, vintage-looking railing and lighting over the bridge in keeping with the village look, railing/metal mesh barrier between the path & road as it is dangerous going along there with little kids.*
- *More presentable and tidying up of streetside. The bridge needs safer two way crossing for pedestrians and cyclists, plus the guard railings are very dirty and dated and could be replaced.*

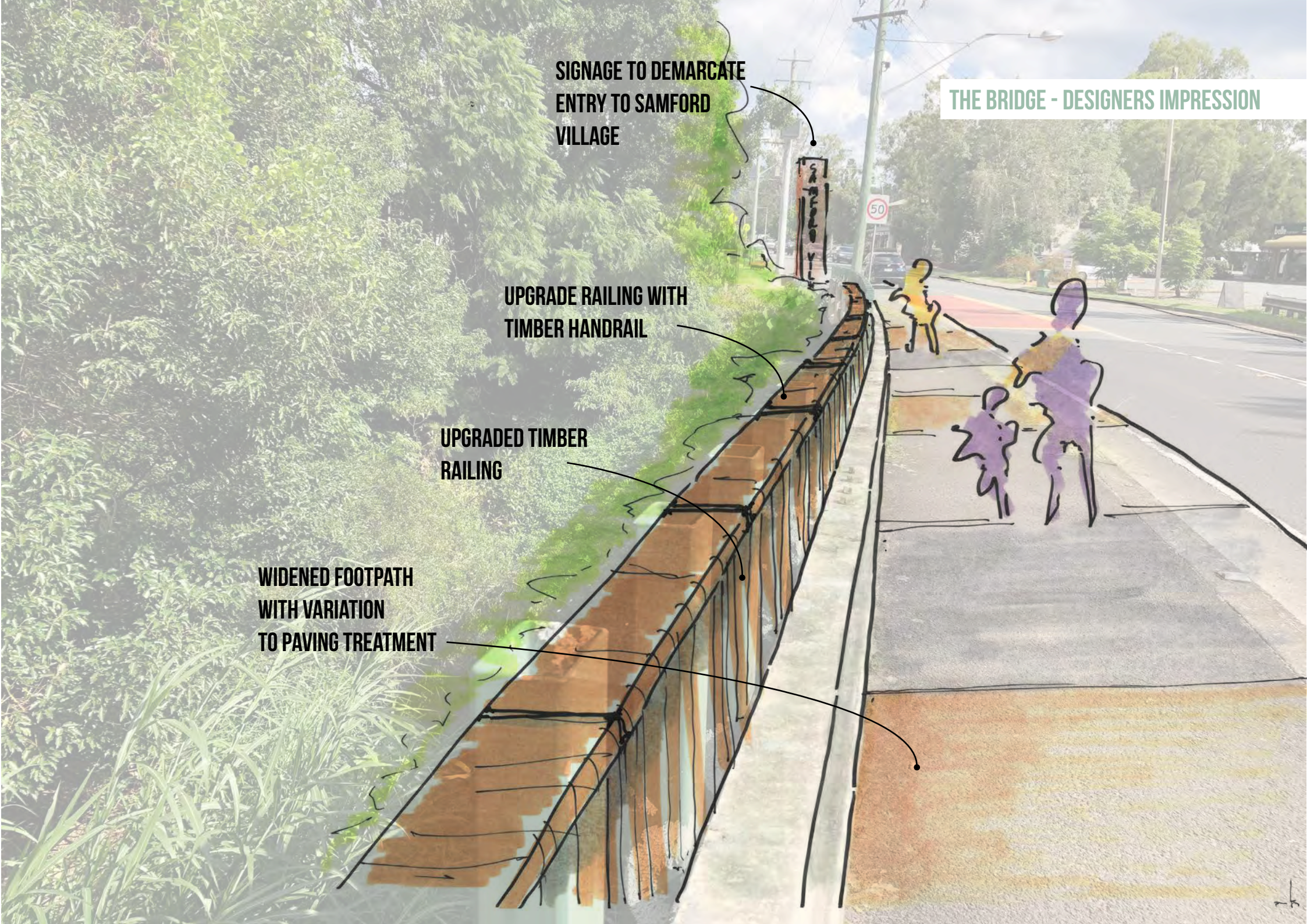
**THE BRIDGE - DESIGNERS IMPRESSION**

**SIGNAGE TO DEMARCAT  
ENTRY TO SAMFORD  
VILLAGE**

**UPGRADE RAILING WITH  
TIMBER HANDRAIL**

**UPGRADED TIMBER  
RAILING**

**WIDENED FOOTPATH  
WITH VARIATION  
TO PAVING TREATMENT**



# 03 ENGAGEMENT RESULTS

## SECTION 4- PROGRESS STREET TO CASH AVENUE

### Phase 5 of revitalisation

This area includes the streetscape from Progress Street to Cash Avenue North. The streetscape was upgraded less than a decade ago and like section 2 has a mix of small to mid size street trees, concrete aggregate paving interspersed with coloured concrete and heritage brick. The section was 6th behind the bridge for areas in need of improvement demonstrating its lower order (though ahead of sections 2, 6 and 7). Street improvement opportunities include new street tree planting to the eastern edge of the verge and with a sizeable verge available to the corner a large street tree is possible in this zone.

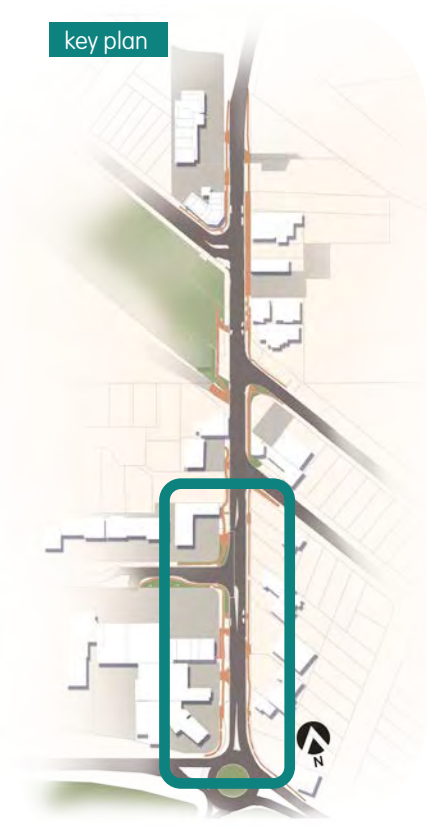
Premises in this location include a small Thai takeaway 'hole in the wall' and a hire equipment company that residents tended to appreciate for its rural character or dislike for its utilitarian feel. RobertsDay advise the continuation of these uses as typical and appropriate typical rural/village uses.

With the potential for a development application likely to be put towards Council in this area, we would also advise against major streetscape alterations with the streetscape currently in reasonable form relative to other sections of the street. RD would however recommend a series of new street tree plantings in order to shade this section of street and to further revitalise this area.

key plan







## SECTION 2 - ROUNDABOUT TO PROGRESS STREET

### Phase 5 of revitalisation

Few residents had issue with this section of street but a number suggested changes to the pedestrian crossing. Residents cited sightline issues due to the adjacent parking bay as a hazard.

As the street has been relatively recently upgraded in this section there is less need for improvement. Some trees that were planted in the most recent upgrade have since failed and it is recommended that these be replaced.



# 03 ENGAGEMENT RESULTS

## SECTION 7- CANTER AND COLT

### Phase 4 of revitalisation

Awnings are being considered by the business along this section of street. Residents were in general favour of this idea though some felt it may prohibit movement.

Other suggestions included box planters and additional greenery and new paving.

- *This would be nice, maybe we could have some tables and chairs*
- *Excellent idea as the afternoon sun in summer makes this area very unpleasant.*
- *Historical features like new street lights. Even lighting going across the street like CBD. Would be easy than to decorate for Xmas. Give people coming to our town to feel like they would like to be a part of our community*
- *Box planters are a good idea!*
- *New paving and extend the awning from shady dayz would look good*
- *Full awning, Pandora vines along street*

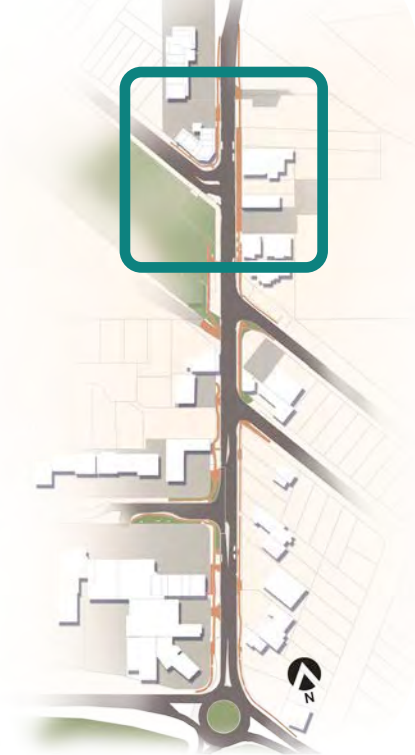
*This would be nice, maybe we could have some tables and chairs*

*Full awning, Pandora vines along street*

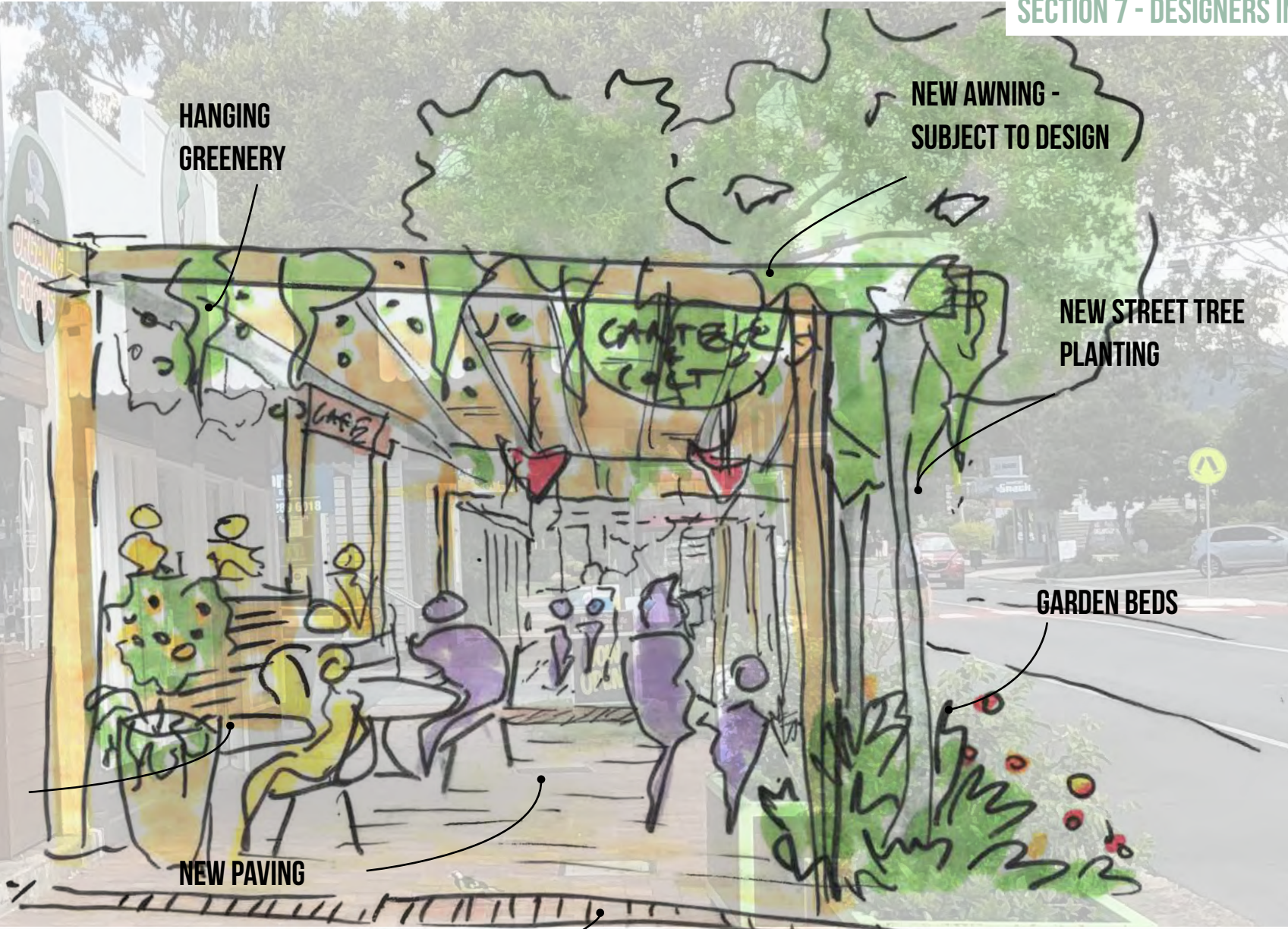
"before" street perspective



key plan



**SECTION 7 - DESIGNERS IMPRESSION**



**HANGING  
GREENERY**

**NEW AWNING -  
SUBJECT TO DESIGN**

**NEW STREET TREE  
PLANTING**

**GARDEN BEDS**

**NEW SEATING**

**NEW PAVING**

**BRICK TRESHOLD PAVING**

# 03 ENGAGEMENT RESULTS

## SECTION 6 - THE FARMERS HALL TO DOCTORS

### Phase 4 of revitalisation

This section of the street was the most popular with a number of residents commenting on the charming building, its historical significance and relevance to community. There were fewer concerns by residents on the condition of buildings in this area, however a number of residents had suggestions for new and refreshed paving adjacent the doctors and dentists.

- *Paving outside dentists & doctors is quite uneven. As anyone can see by the amount of bird poop around the front & side of the Farmer's Hall it is a prolific bird nesting site so if we want to keep the birds away from that particular area needs very low level planting or paving only with raised planter boxes*
- *Fresh tiles - anything but pottery or clay colour. They dirty easy and they're very outdated.*

- *Absolutely, I think the Farmer's Hall is historically very significant. I love the big gum so don't get rid of that but I feel it doesn't have a clear entrance to it. The paving generally in the street needs evening up. Some art installation related to its history, definitely beautify - loved the hanging baskets outside the doctors. Definitely allowing more space would be good - plays in the hall are very cramped*
- *New paving would be wonderful and smaller cottage style gardens in front of the hall perhaps to better show off the gorgeous building.*

*New paving would be wonderful and smaller cottage style gardens in front of the hall perhaps to better show off the gorgeous building.*

"before" street perspective



key plan



**SECTION 6 - DESIGNERS IMPRESSION**

**TREES ADDED TO EXISTING POTS**

**Samford DOCTORS SURGERY**

**ADDITIONAL TREES**

**IMPROVED GARDEN PLANTING**

**BRICK PAVING**

**HANGING FLOWER BASKET**

**BRICK BANDING**

**NEW PAVING WITH MATERIAL + COLOUR VARIATIONS**

