



# WYLLIE PARK

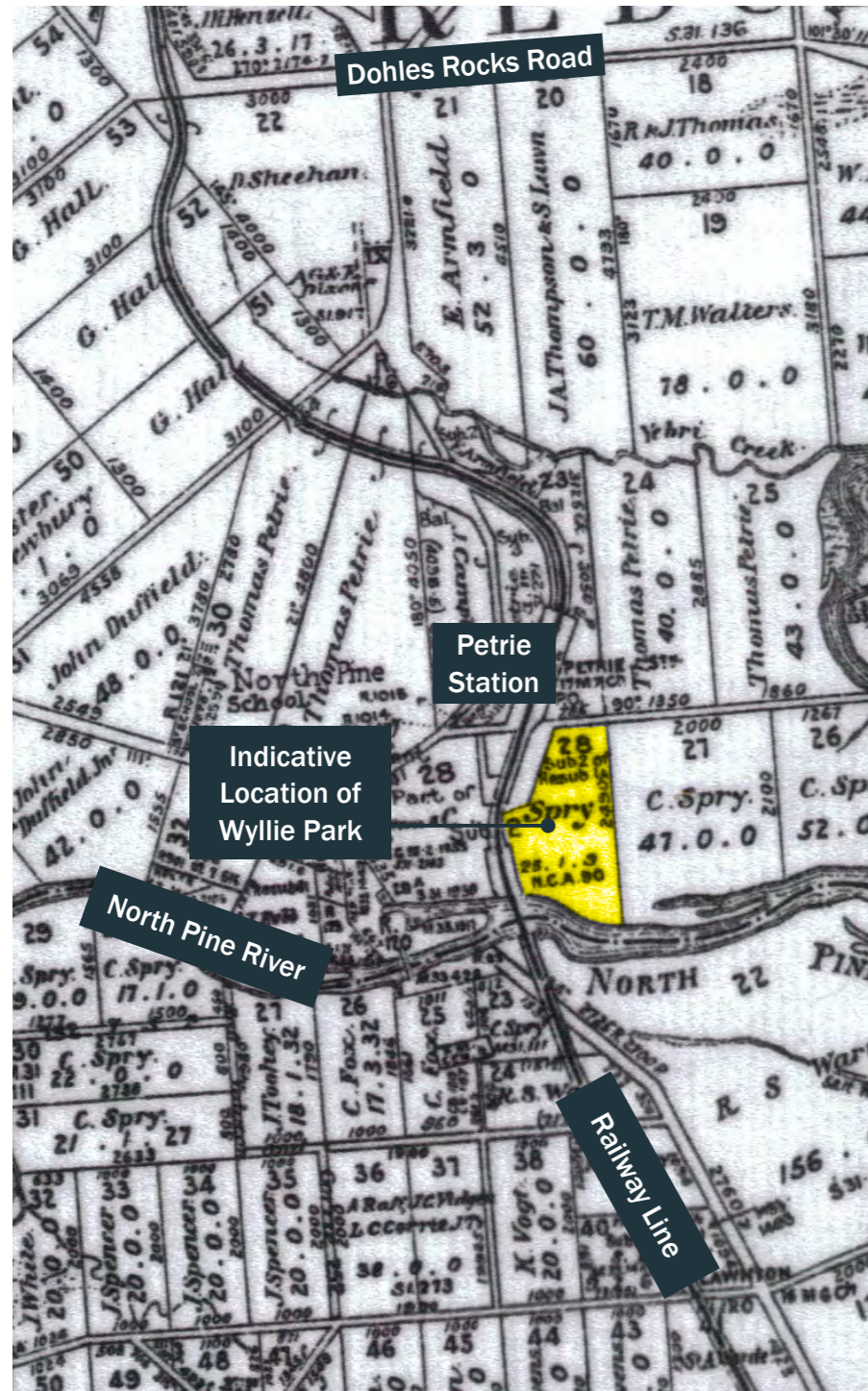
## HERITAGE MASTER PLAN

### Design Rationale

26 November 2019

# HISTORY OF THIS LANDSCAPE

## Heritage Touchstones



SUBDIVISION OF PORTION 28 (CIRCA 1930)

The area now known as Wyllie Park was part of the large subdivision of Portion 28 **purchased by Wyllie in 1883**.

It is likely that Wyllie Park itself **grew organically as a rest area** following the opening of the A.J. Wyllie Bridge in 1937.

It is unclear if the Petrie rest area was specifically acquired by Main Roads for the purposes of establishing a rest reserve for motorists, or if it was a location that was used organically by those passing by [...] travelling between Brisbane and the northern coast area, prior to the 1950s.

Since the 1990s, Wyllie Park has seen several [...] upgrades and additions of amenities such as picnic tables, play equipment, gazebos and exercise equipment. A **number of early tree plantings removed** [...] however recent plantings have been replicated in the **concentric pattern**.

An extensive **tree replacement program** was undertaken between 1996 and 2000 to address **safety issues** associated with failed trees.

[Historic analysis & aerial images] show that it is unlikely a masterplan existed for Wyllie Park in the 1950s.

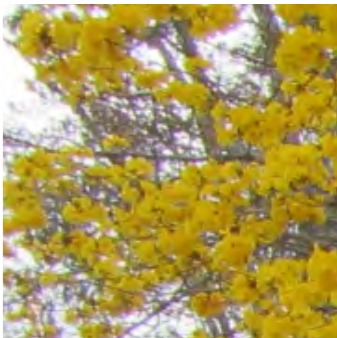
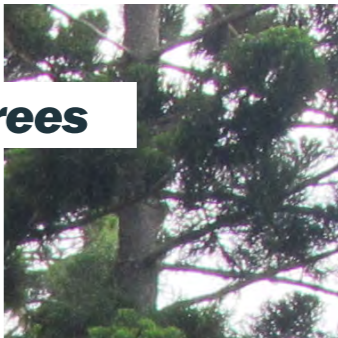
(Extracts from Wyllie Park, Petrie Conservation Management Plan For Moreton Bay Regional Council October 2018)

# SIGNIFICANCE OF PLACE

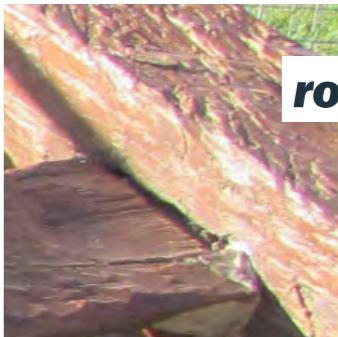


AERIAL PHOTOGRAPH 2019

***foliage and floral trees***



***rough hewn timber***



***lush lawns***



***servicable paving***



***mature canopies***

***historic markers***



# PLACE ASPIRATIONS



## Interpretation

Interpreting the many layers of this place through a physically expressed timeline. Mimicking the circularity of the design, the timeline will recall the key dates and characters influencing this place. The heritage values will be enhanced.



## Reconstruction

The proposed design reinstates several of the iconic *Araucaria* and *Largostreomea* species in a circular formation. This will instil an inherent strength and presence seen from Gympie Road and enhance the ecological value.



## Providing for the Future

Tech modernity meets the heritage values in provision for a travel rest stop of the future. Ensuring visitors can connect to the wider world and get to their next destination. Provision of facilities including toilets and other facilities.



## Road Side Rest Reserve

A constellation of places set amongst mature and newly planted trees. Picnic spots, BBQs, tables, grassy lawns & playground where families can enjoy a rest together.

# SLASH PINES: HEALTH AND LIFESPAN

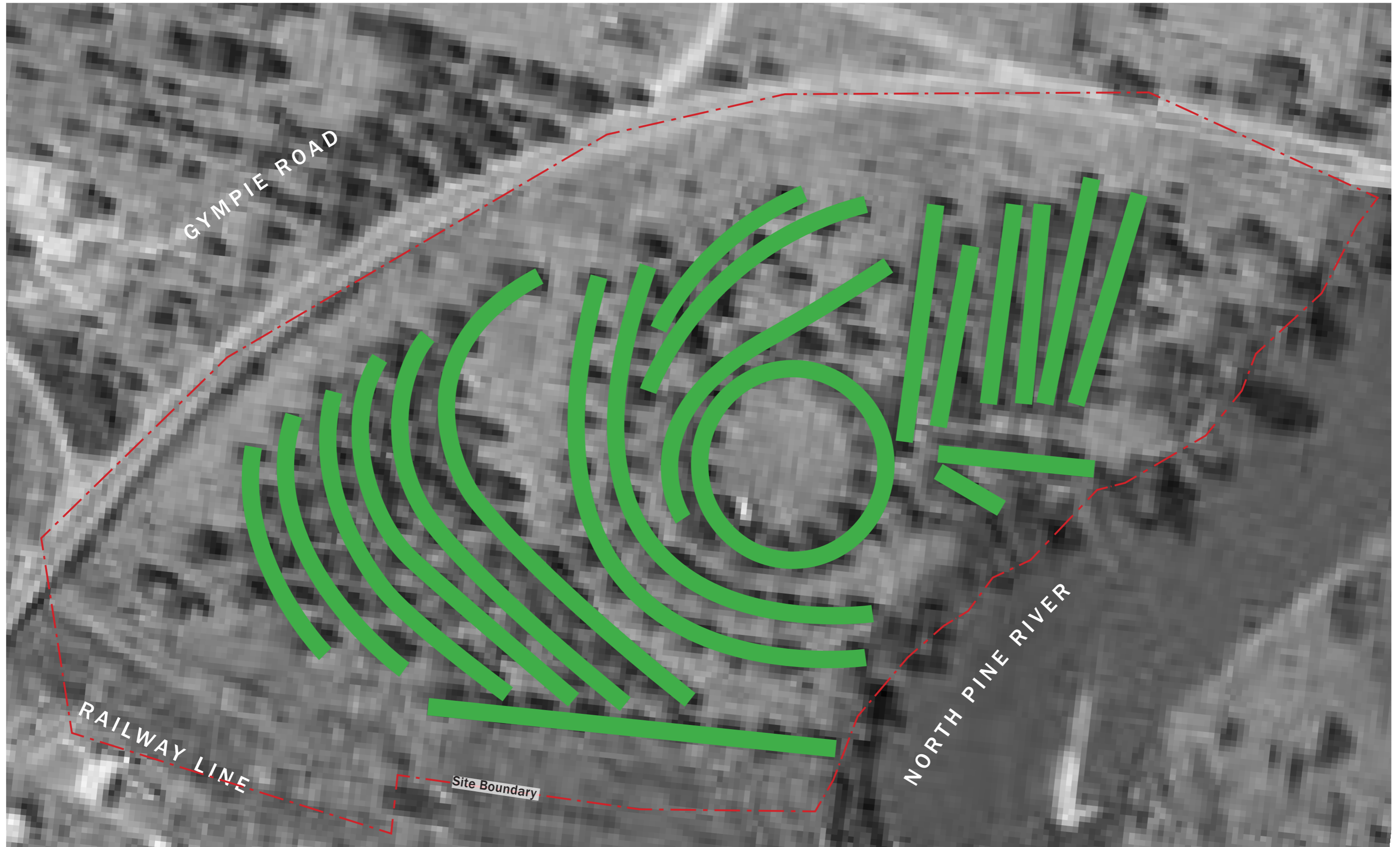
*Pinus elliottii* was chosen as a mass planting species in the 1940s. Surviving only 200 years in optimal conditions, it is one of the shortest-lived pine species.

As a rest stop, cars have been driving on the root structure zones. Soil compaction has impacted the health of the trees by restricting water and nutrients. These factors are likely to have led to compromised health of the pines and thus their required premature removal for the safety of the occupants of the park.

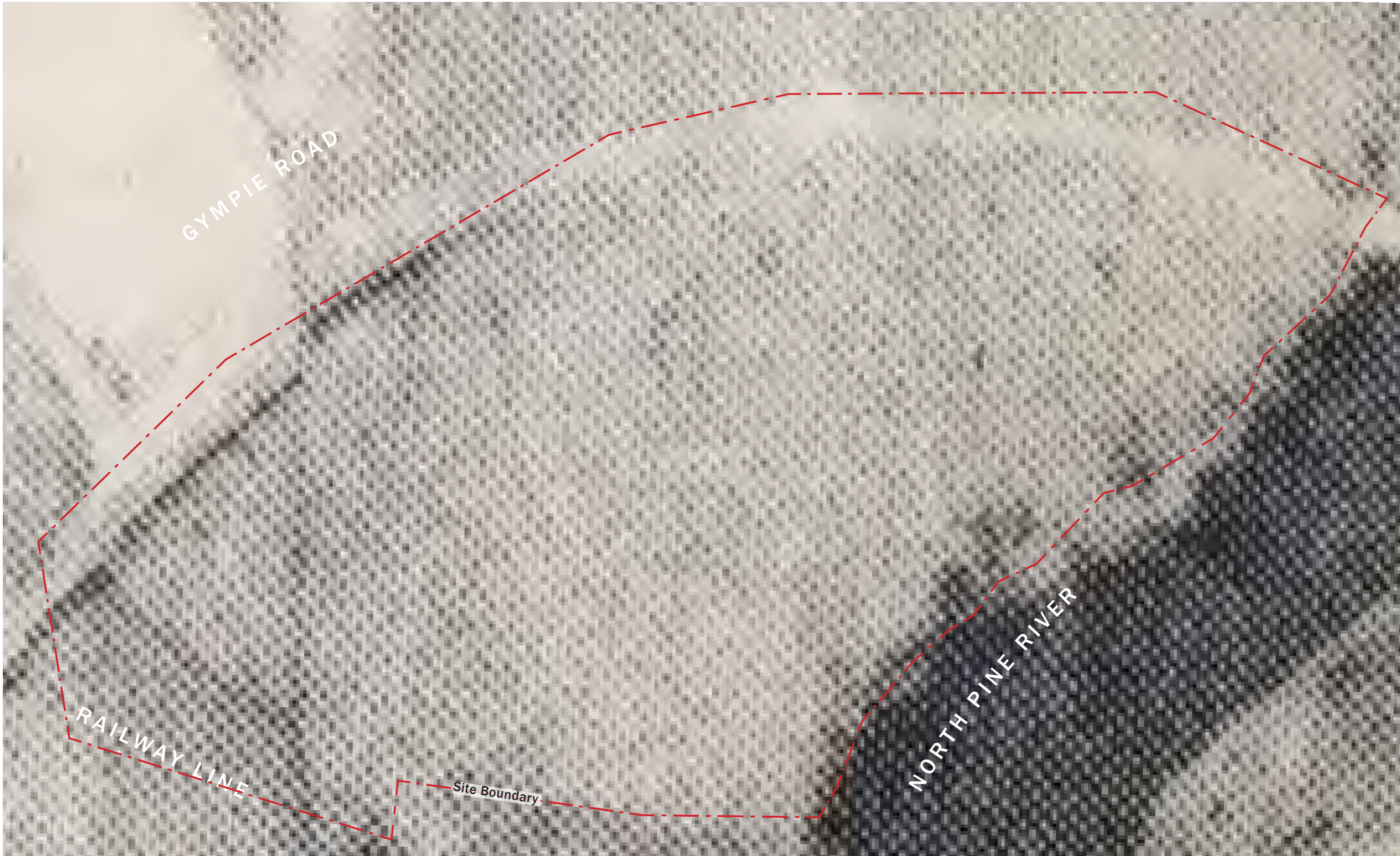
The proposed design seeks to reinstate the planting arrangement using a hardier species and protective measures.



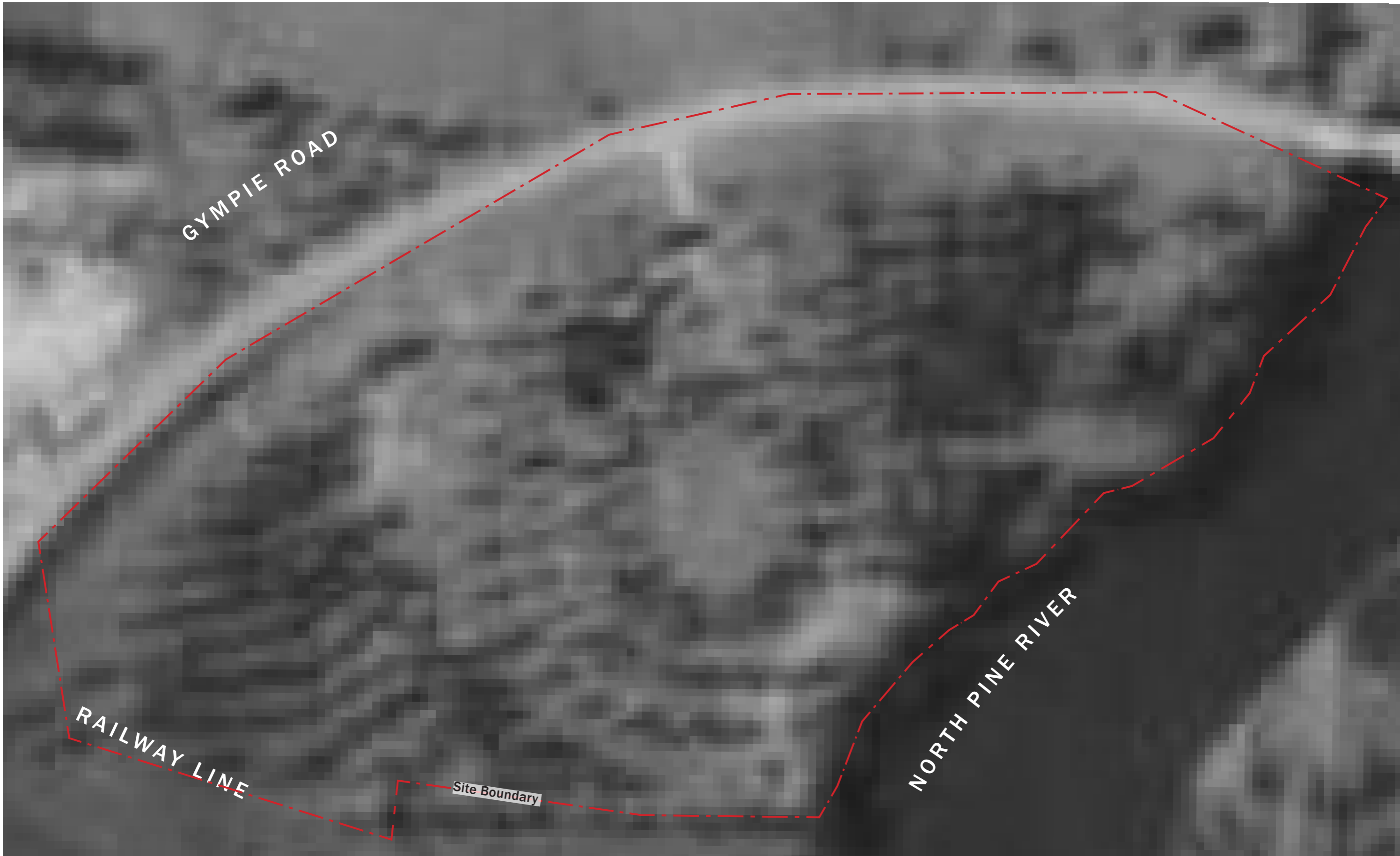
# SLASH PINE PLANTING ARRANGEMENT, 1955



# AERIAL PHOTO OF WYLLIE PARK, 1943



# AERIAL PHOTO OF WYLLIE PARK, 1949



# AERIAL PHOTO OF WYLLIE PARK, 1955



# AERIAL PHOTO OF WYLLIE PARK, 1969



# AERIAL PHOTO OF WYLLIE PARK, 1984



# AERIAL PHOTO OF WYLLIE PARK, 1994



# AERIAL PHOTO OF WYLLIE PARK, 1998



# AERIAL PHOTO OF WYLLIE PARK, 2006



# AERIAL PHOTO OF WYLLIE PARK, 2017



# MASTER PLAN STRUCTURE

## Maintaining and Enhancing Heritage Values: Existing Trees



# MASTER PLAN STRUCTURE

## Maintaining and Enhancing Heritage Values: Proposed Kauri Pine & Crepe Myrtle Plantings



# MASTER PLAN STRUCTURE

## Reinstatement of Significant Features which have been Lost: Proposed Infill Planting



# MASTER PLAN STRUCTURE

Reinstatement of Significant Features which have been Lost: Proposed Infill Planting at Maturity



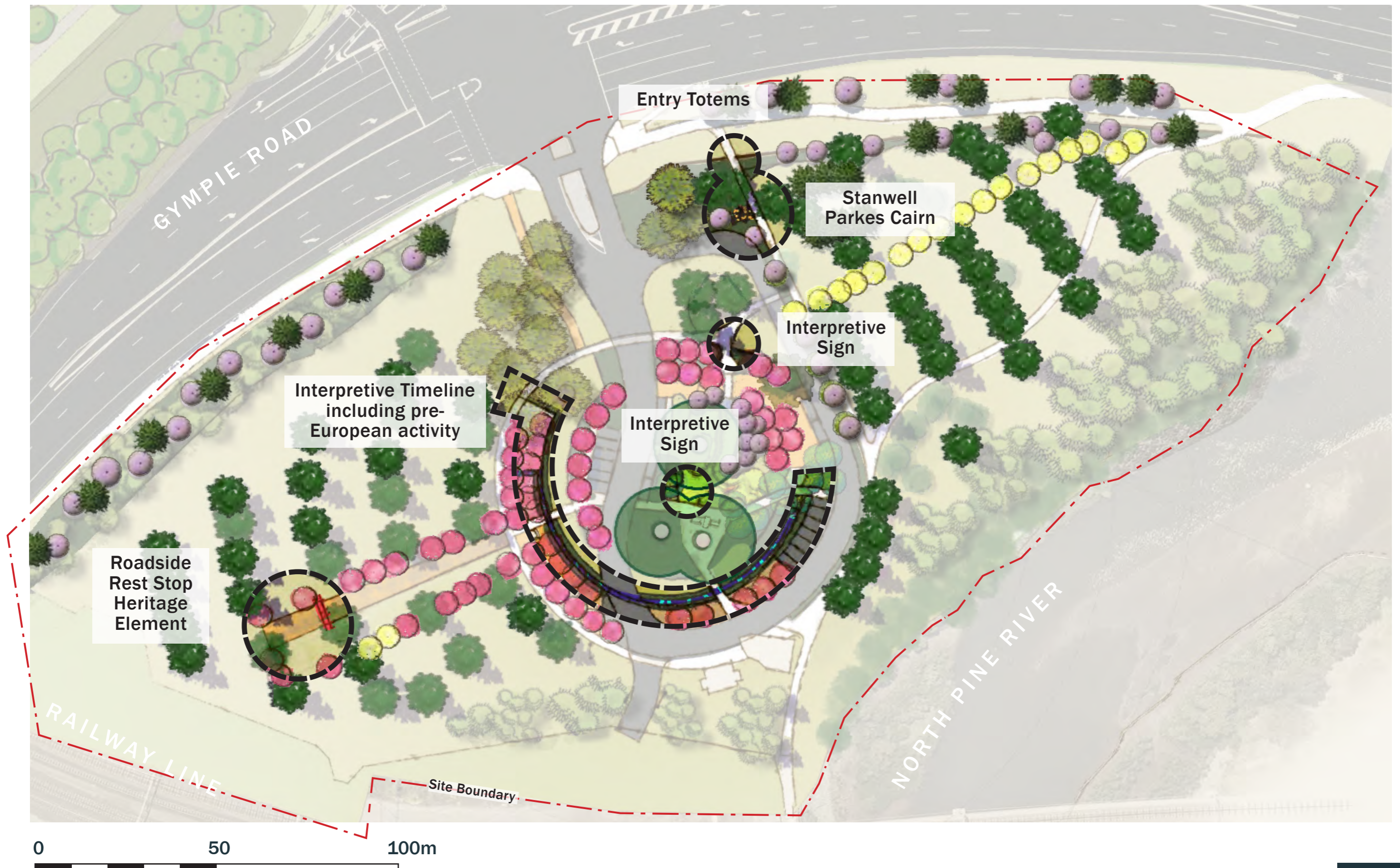
# MASTER PLAN STRUCTURE

Maintaining Use and Enhancing the Significance of the Place: Proposed Complementary Planting



# MASTER PLAN STRUCTURE

Interpretation of Heritage Values: Potential Opportunities to Interpret History of Place



# MASTER PLAN STRUCTURE

## Interpretation of Heritage Values: Heritage Picnic Settings & Interpretive Heritage Elements



Replacement Entry Totems



Interpretive Timeline / Pathway



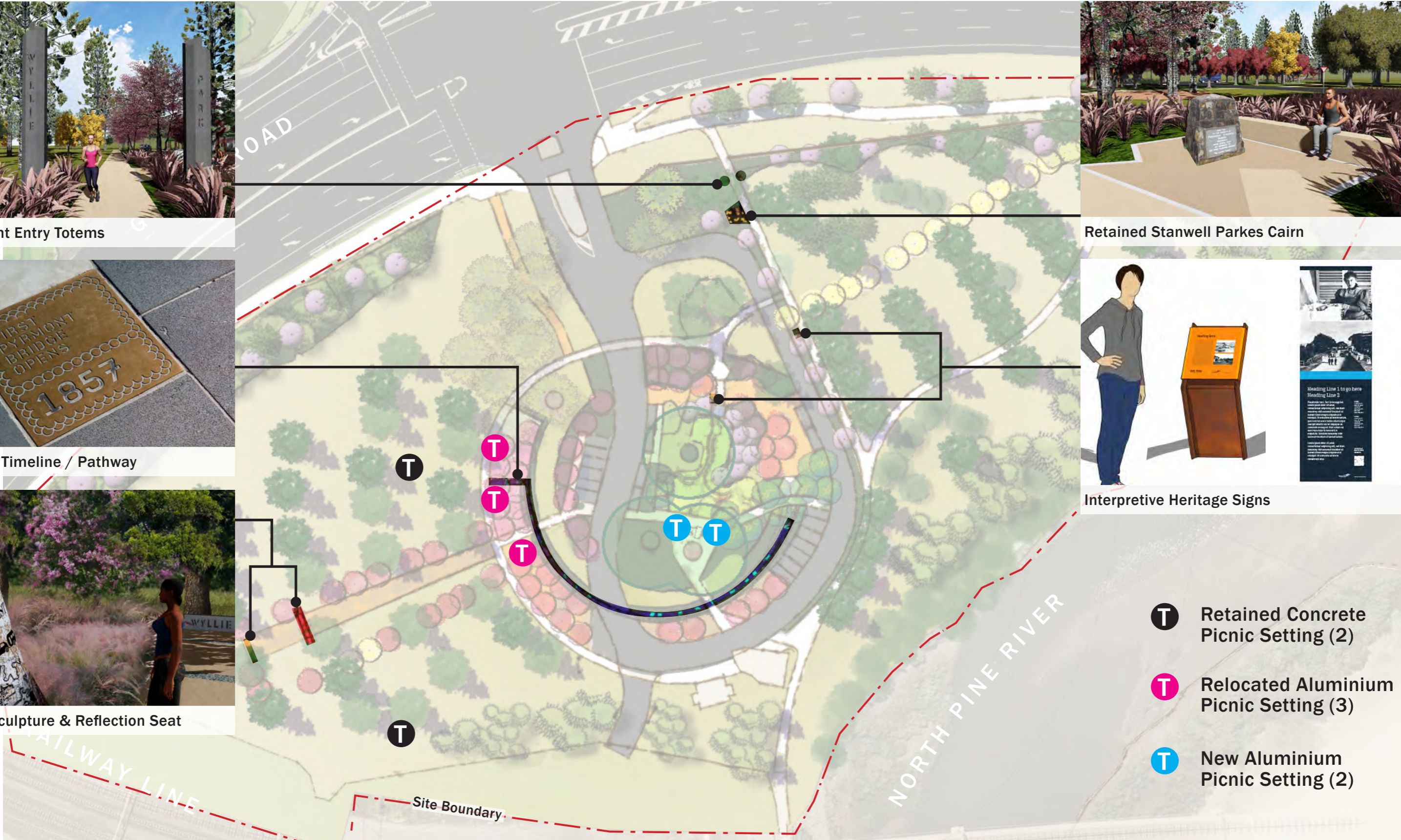
Rest Stop Sculpture & Reflection Seat



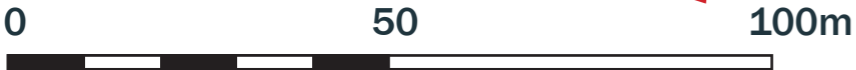
Retained Stanwell Parkes Cairn



Interpretive Heritage Signs

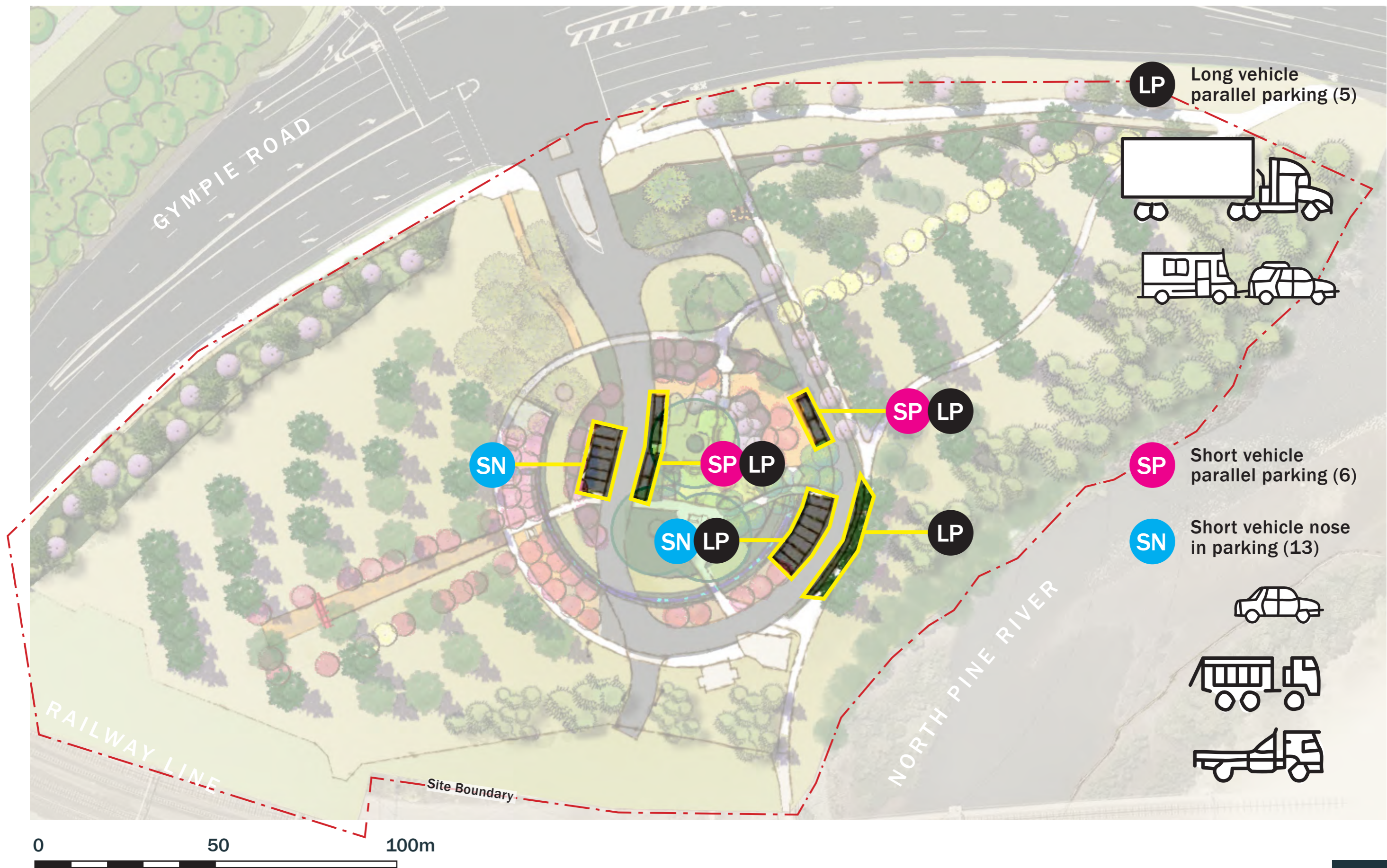


- T** Retained Concrete Picnic Setting (2)
- T** Relocated Aluminium Picnic Setting (3)
- T** New Aluminium Picnic Setting (2)



# MASTER PLAN STRUCTURE

## Heritage Rest Stop Values: Location & Number of Short and Long Vehicle Car Parks



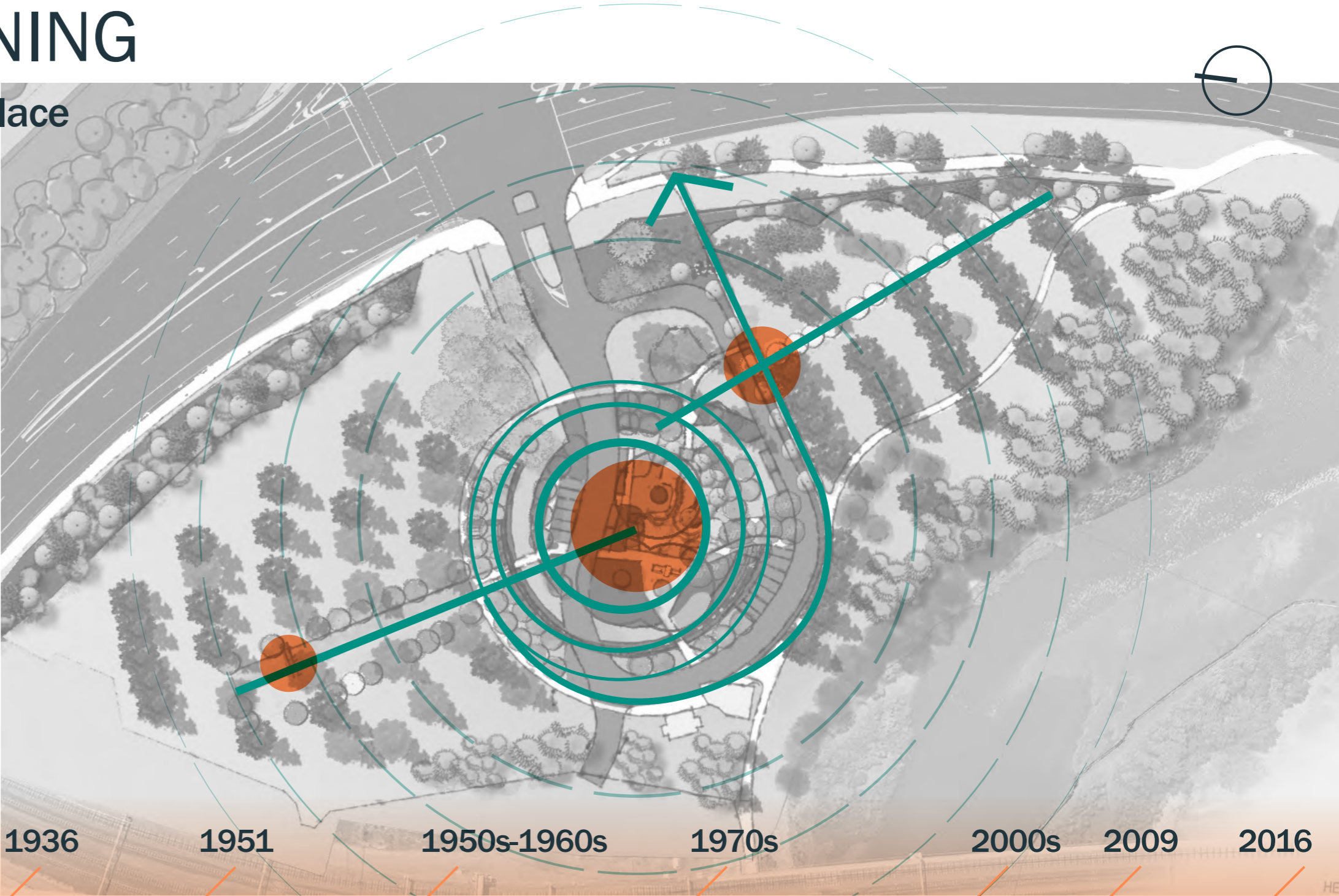


# EMBEDDED MEANING

## Reflecting the timeline of this place

An Interpretation Strategy will be finalised in accordance with Policy 31 and 32 or the Conservation Management Plan (CMP) to ensure the heritage significant of the place is focussed on key historic themes.

The design captures the essential historical touchstones of this park. This will reflect the park’s relationship to the road alignment, use as a rest area, relationship to traditional owners, Petrie and surrounding elements.



pre-European 1883

1900s

1936

1951

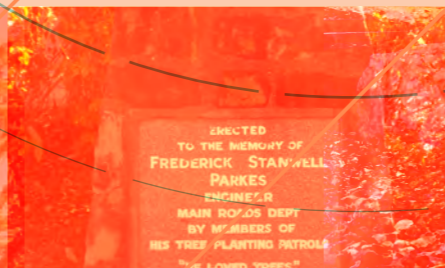
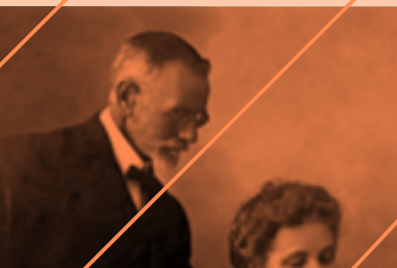
1950s-1960s

1970s

2000s

2009

2016



Alexander Wyllie purchased Riverleigh, including c.50 acres.

Wyllie’s eastern paddocks used for agriculture shows.

AJ Wyllie Bridge opened.

North Pine Rest Area listed by Main Roads. Entrance to middle of central ring.

Evidence of a range of planting programs.

Frederick Stanwell Parkes memorial cairn installed.

Upgrades and installments of amenities and plantings.

Wyllie Park entered on Heritage Register.

Petrie Mill development begins.

# REMOVED & RETAINED LANDSCAPE ELEMENTS

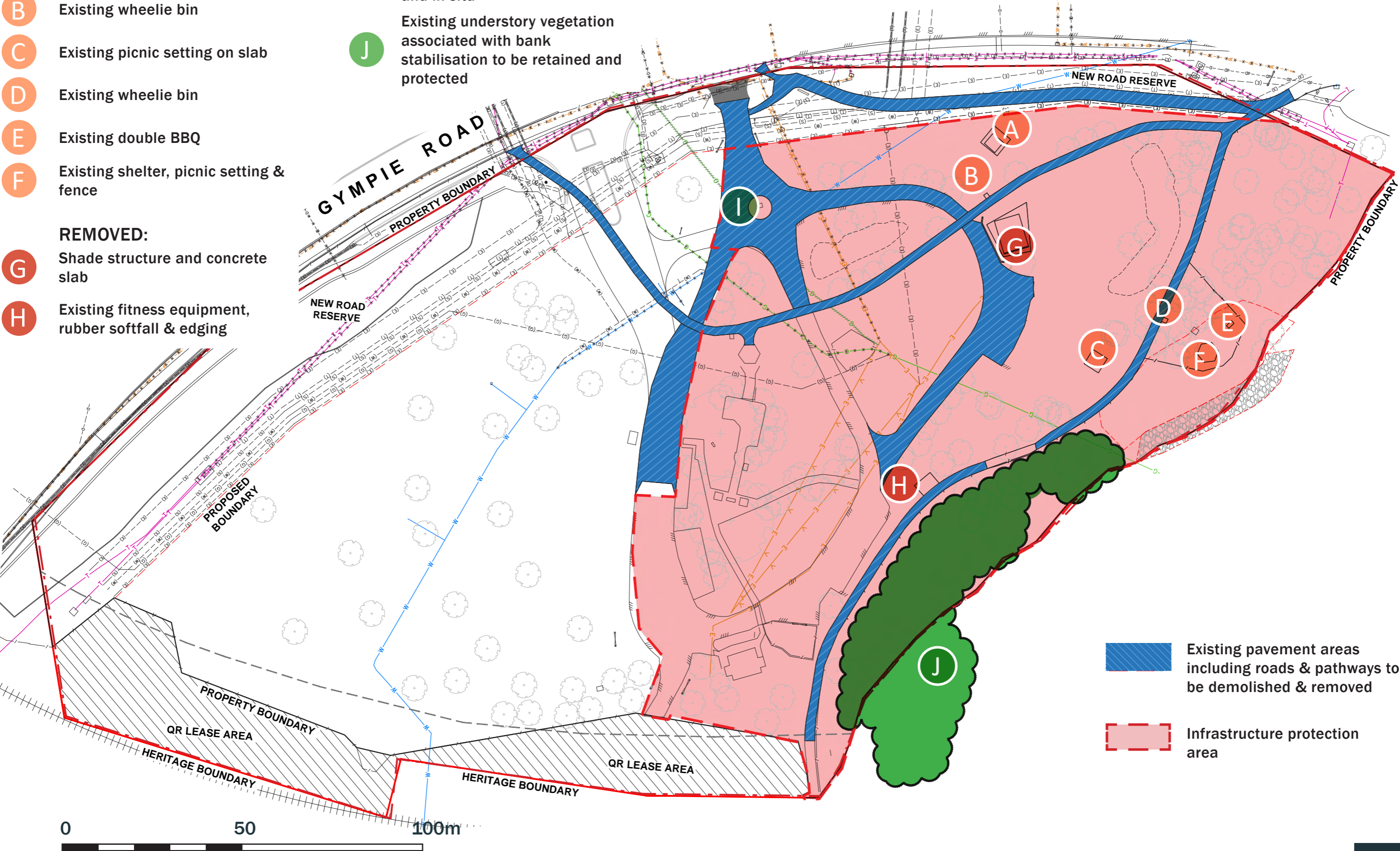


- RETAINED & RELOCATED**

  - A** Picnic setting on concrete
  - B** Existing wheelie bin
  - C** Existing picnic setting on slab
  - D** Existing wheelie bin
  - E** Existing double BBQ
  - F** Existing shelter, picnic setting & fence
- REMOVED:**

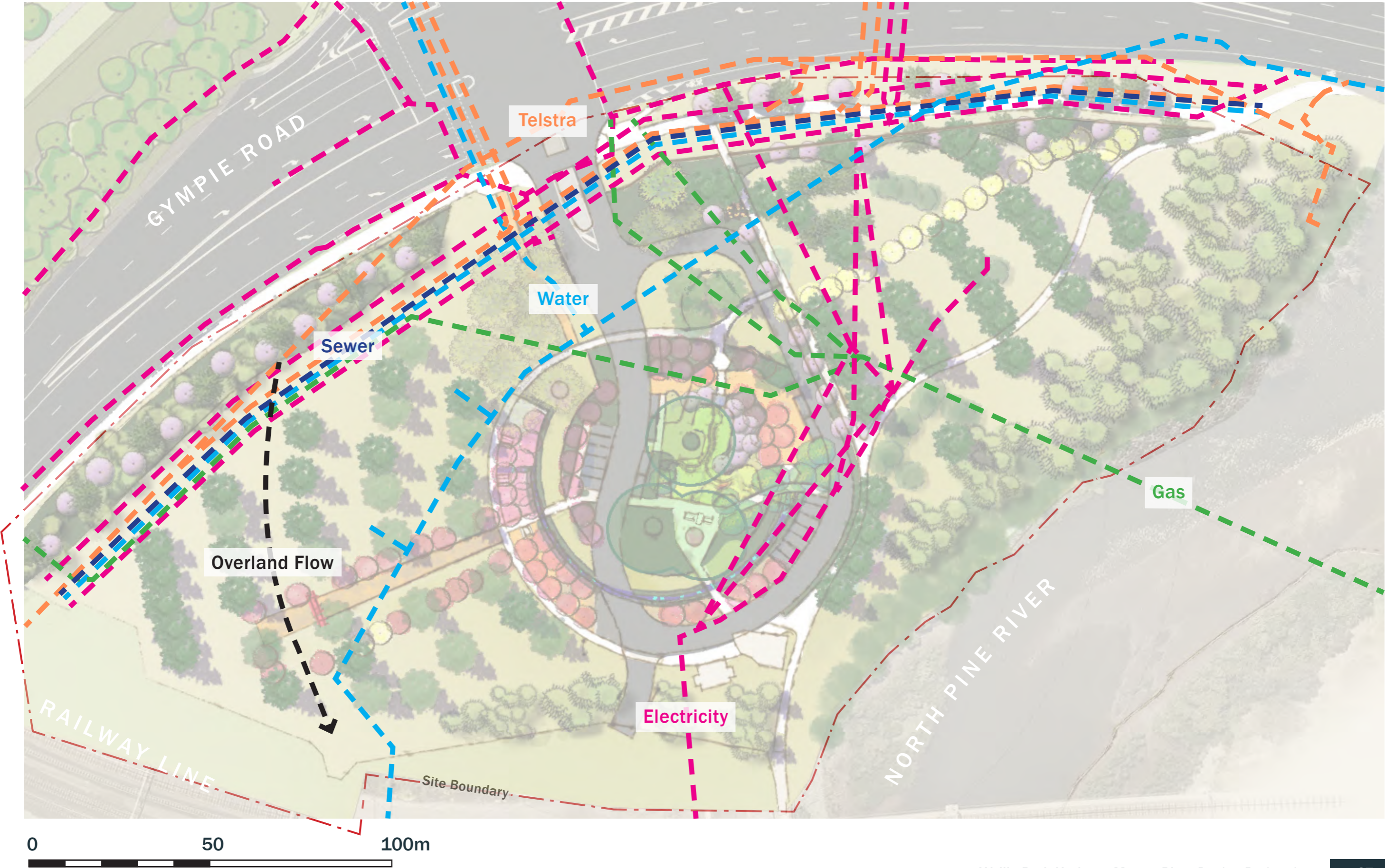
  - G** Shade structure and concrete slab
  - H** Existing fitness equipment, rubber softfall & edging

- RETAINED:**
- I** Granite monument to Frederick Stanwell Parkes to remain intact and in-situ
  - J** Existing understory vegetation associated with bank stabilisation to be retained and protected



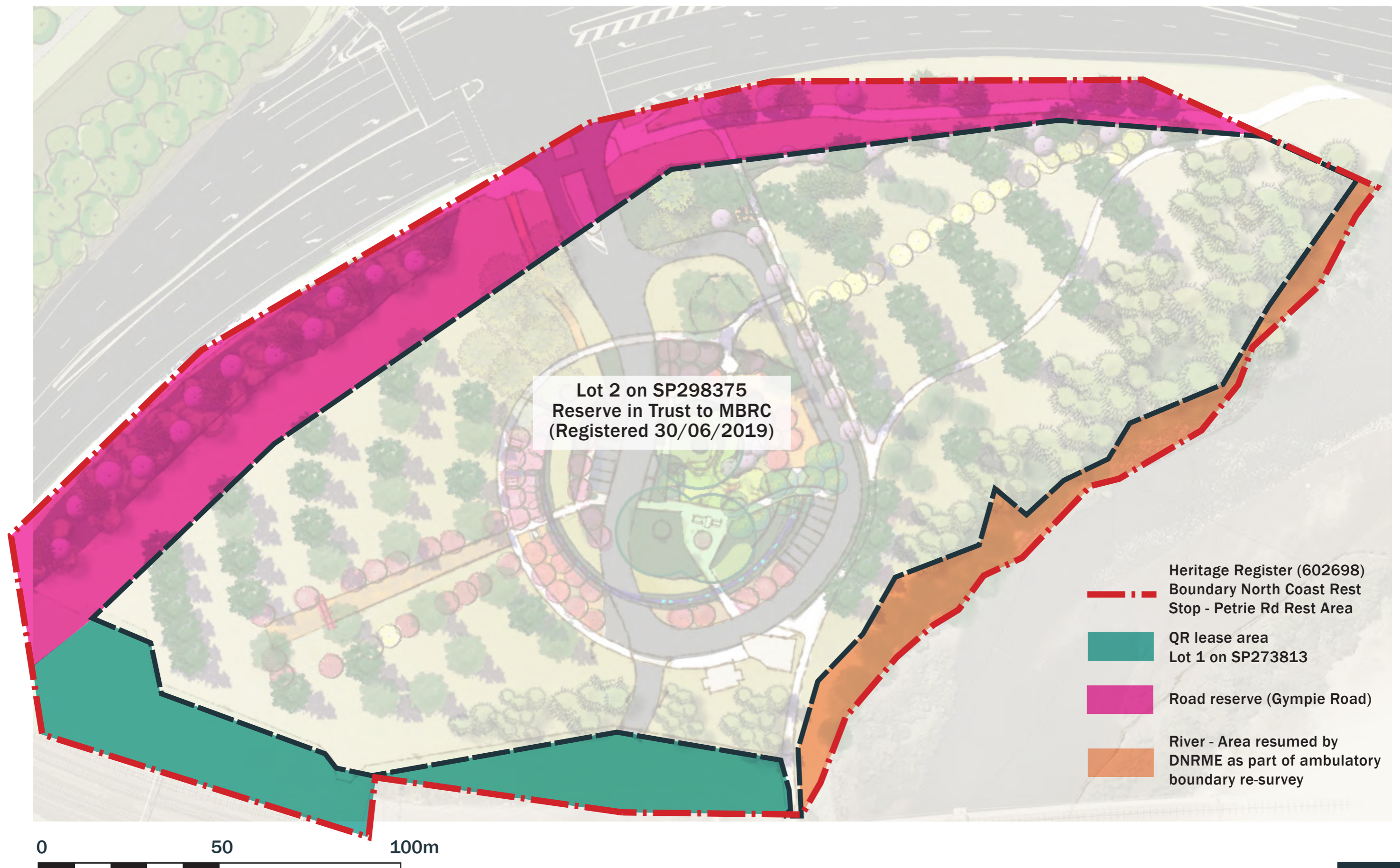
# MASTER PLAN SERVICES

## Existing and Proposed Services



# MASTER PLAN BOUNDARIES

Boundaries associated with Wyllie Park



**Moreton Bay Regional Council**

PO Box 159  
Caboolture  
Queensland 4510

P | (07) 3205 0555  
T | [mbrc@moretonbay.qld.gov.au](mailto:mbrc@moretonbay.qld.gov.au)  
W | [www.moretonbay.qld.gov.au](http://www.moretonbay.qld.gov.au)

