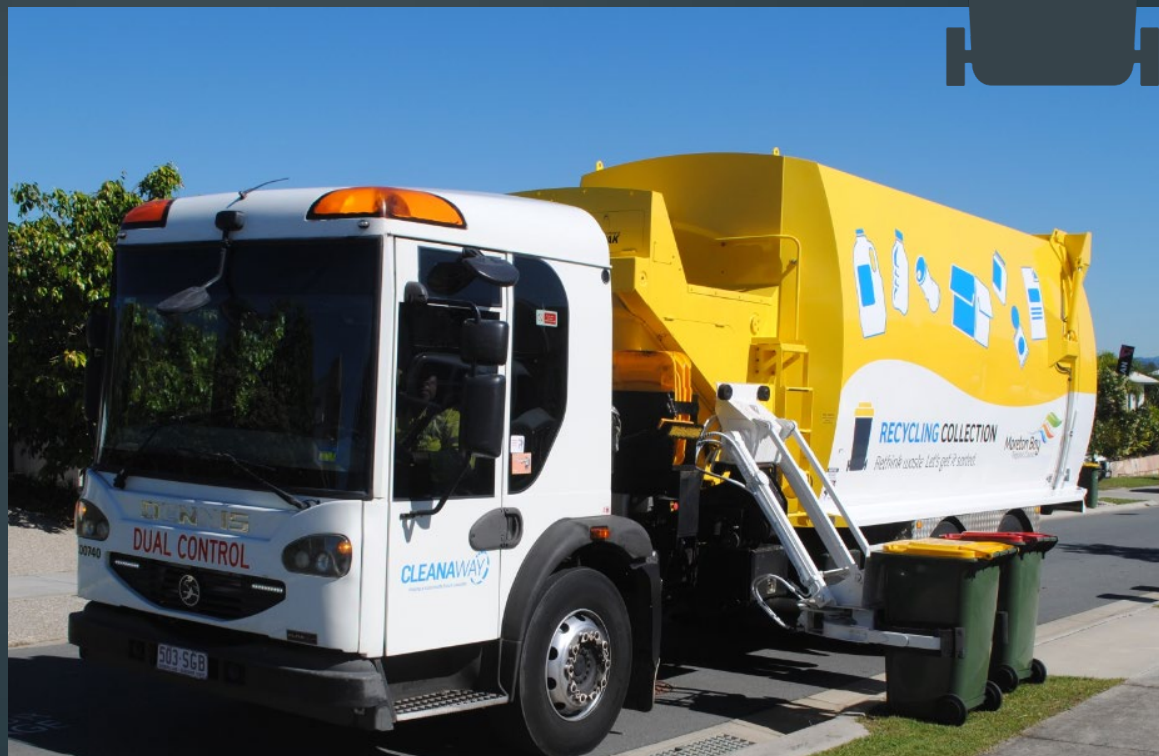
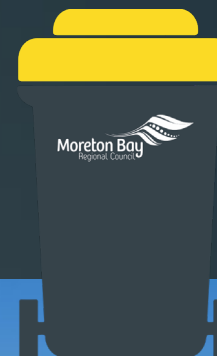


Recycling: Let's Get it Sorted - Renee Currenti (Environmental Consultant)

Recycling: Let's Get it Sorted

Recycling and Waste Management
for Sports and Recreation Clubs

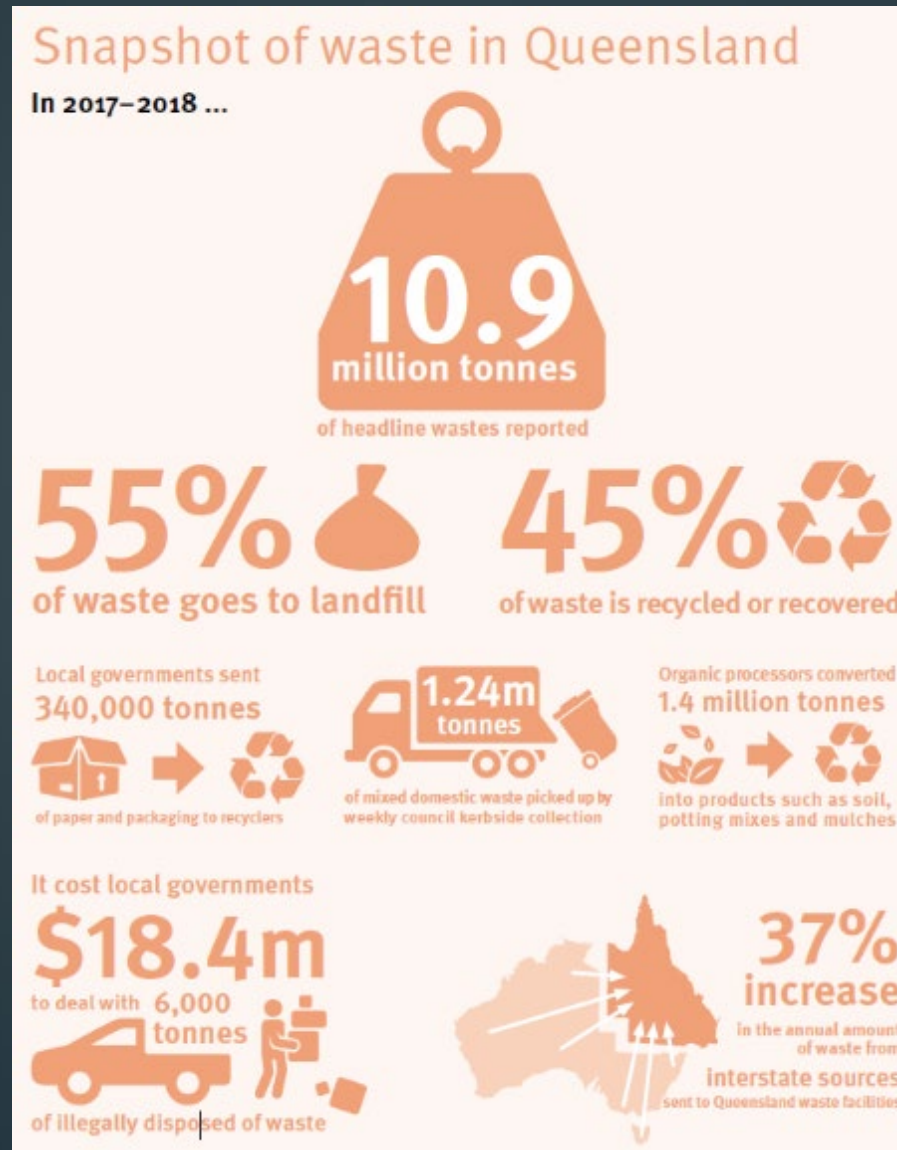


Acknowledgement of Country



I would like to acknowledge the traditional owners and ongoing custodians of the Country on which we meet today and pay our respects to their Elders past, present and emerging.

The state of waste in Queensland 2017-18



Moreton Bay's waste



= the weight of 11,302 aeroplanes



The Waste Hierarchy



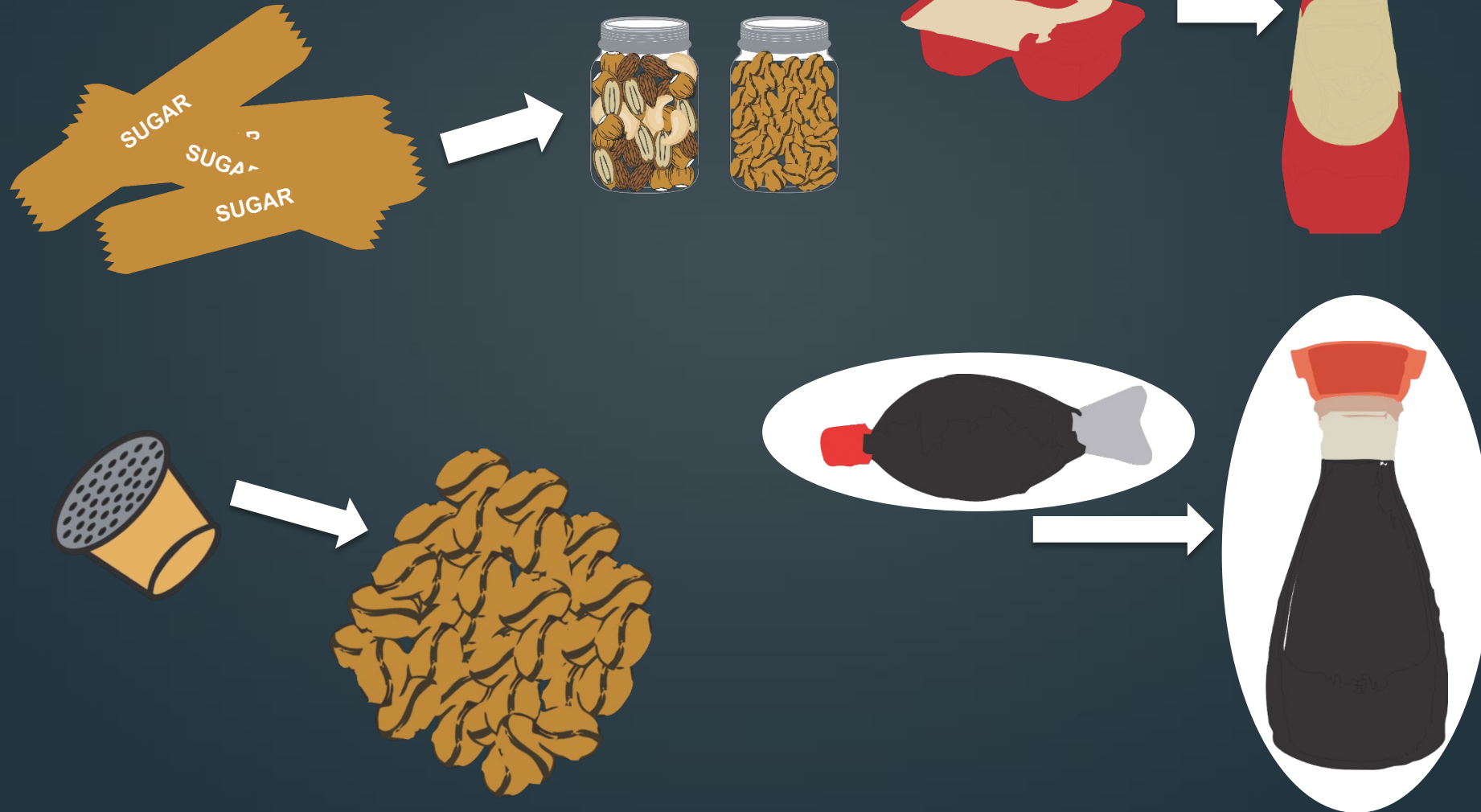
AVOID

Ask yourself, do I really need it?



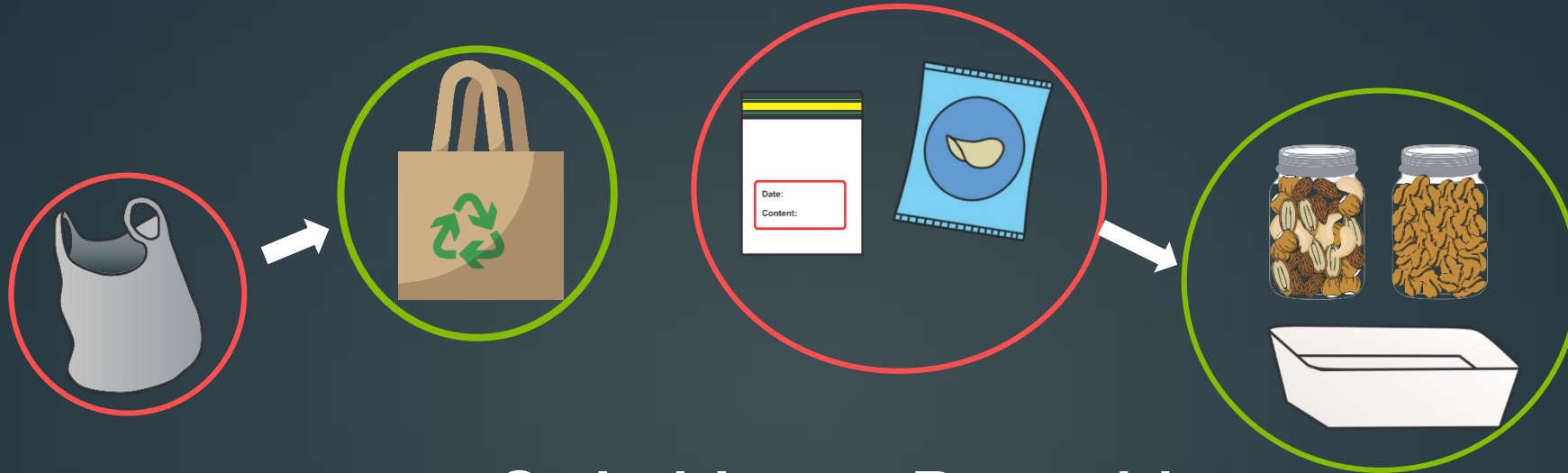
REDUCE

Aim to reduce the amount you buy or use.

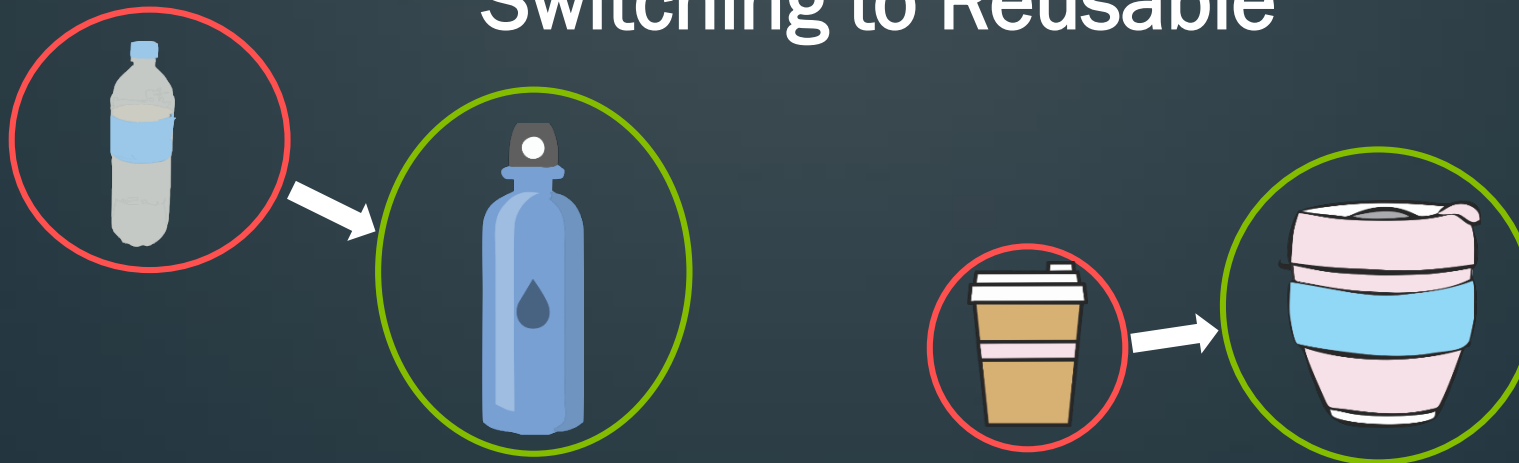


REUSE

Check: Can this item be used again?



Switching to Reusable



RECYCLE

Check: Can what I'm throwing away be recycled?



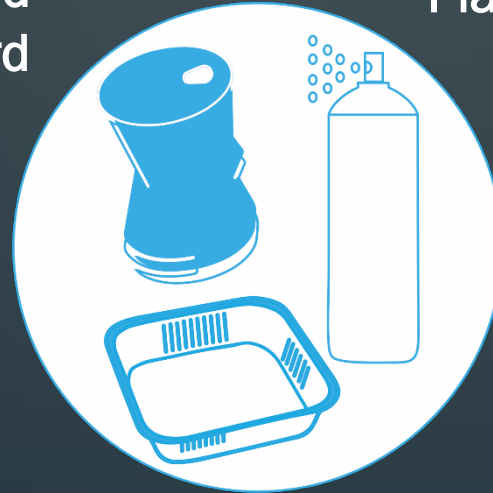
Paper and cardboard



Plastic bottles and containers



Steel cans and aerosols



Aluminium cans, aerosols and foil



Glass bottles and jars

DISPOSE

Dispose to landfill only if there is no alternative

GENERAL WASTE BIN



Council kerbside collection service

GENERAL WASTE BIN

Red is for stop!

Is this a resource I should be rescuing?
Dispose to landfill only if there is no alternative.



RECYCLE

Yellow is for slow down and think!

Can what I'm throwing away be collected in our recycle bin?



Resources in our waste bins

Waste 26%

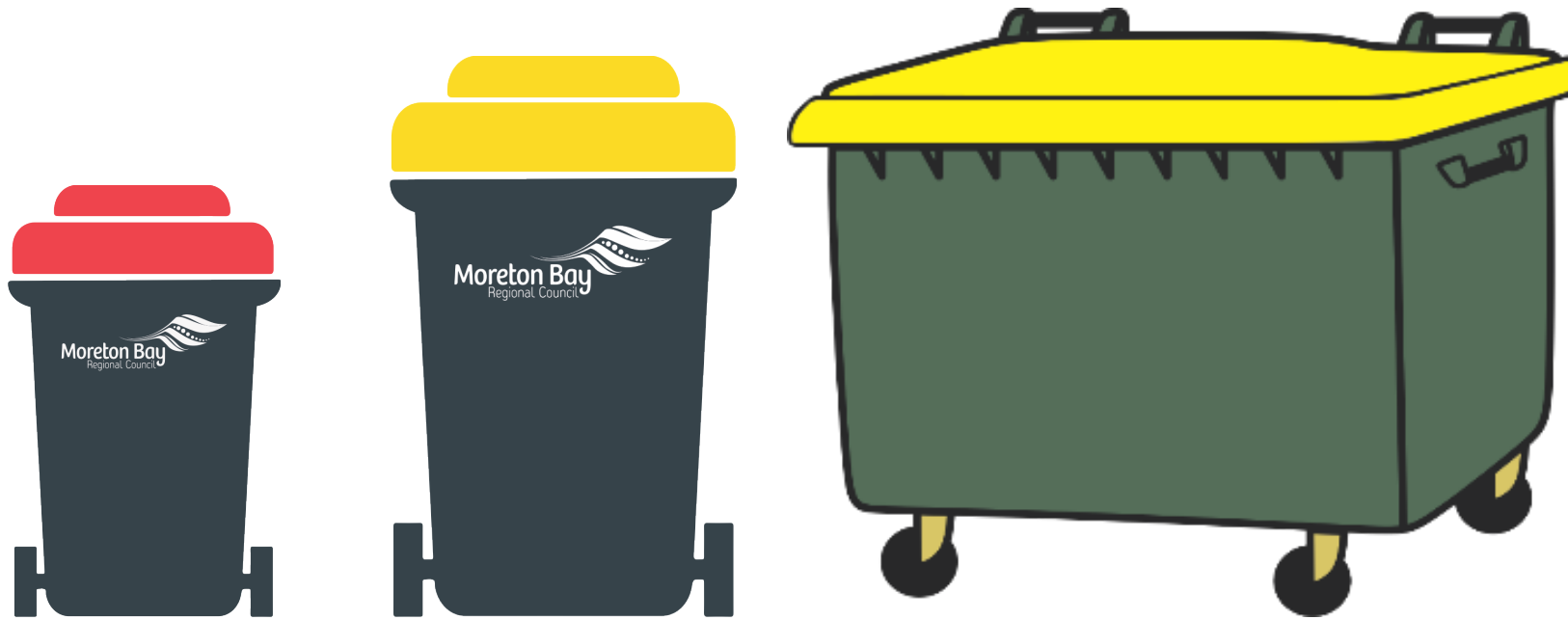
Recyclable 14%

Compostable 60%
Food waste 31%
Garden Waste 29%



Moreton Bay Regional Council Domestic Waste and Recycling Audit, May 2019

Council kerbside collection service



Landfill



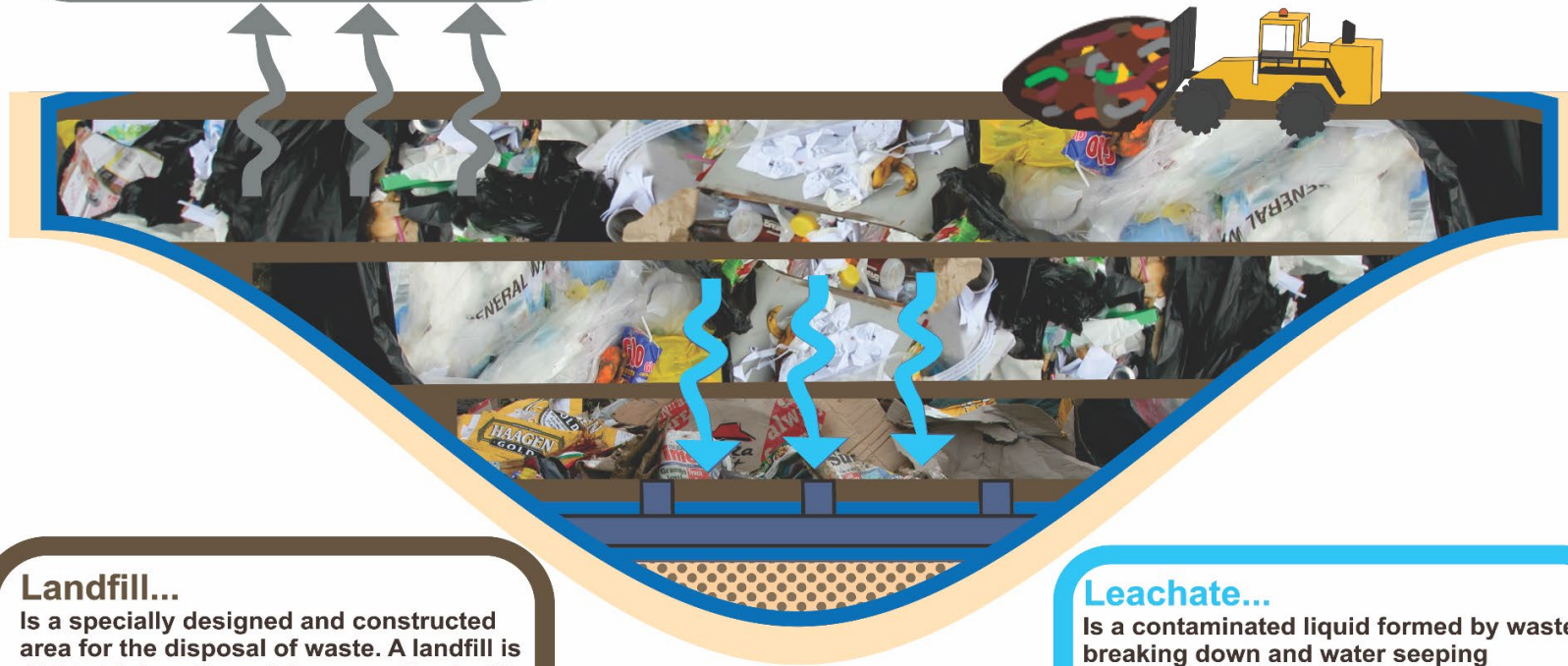
Landfill

Methane...

Is one of the greenhouse gases found in landfill gas. Methane is made by organic materials like food and garden waste breaking down in anerobic conditions in a landfill. Methane can be recovered and used to create energy.

Compactor...

Is a machine that is used to squash or compact waste into a landfill. Compacting the waste removes the air so more waste can be put in the landfill. This also removes the oxygen which creates anerobic conditions.



Landfill...

Is a specially designed and constructed area for the disposal of waste. A landfill is divided into cells and these are lined with materials such as clay and geotextile fabric with gravel and pipes in the bottom for drainage to a treatment plant. This is the last option for waste that cannot be recovered.

Leachate...

Is a contaminated liquid formed by waste breaking down and water seeping through the landfill. Leachate needs to be collected and treated to ensure landfills do not contaminate the groundwater.

Queensland waste disposal levy

Commenced on 1 July 2019

The waste levy aims to:

- reduce the amount of waste going to landfill
- encourage waste avoidance
- provide a source of funding to enable better resource recovery practices
- facilitate industry investment in resource recovery infrastructure.

Information sheet

State Government Waste Levy

What does it mean for businesses?

Businesses are encouraged to look at how they can reduce waste, separate waste streams and recycle as efficiently as possible to help reduce the amount of waste going to landfill, which will reduce the State Government waste levy charge.

How will the levy apply to business, commercial and industrial activities?

Business, industry and commercial operators will be charged the State Government waste levy for all materials going to landfill, as well as any regulated waste. Major commercial waste facilities are located at Burya, Caboolture and Dalabin.

What are the levy charges for business for 2019/20?

- Treated timber and sawdust - \$75 per tonne
- Earth contaminated with hazardous contaminant from land recorded on the environmental management register or contaminated land register - \$75 per tonne
- Regulated waste Category One - \$155 per tonne
- Regulated waste Category Two - \$105 per tonne
- Other leviable waste - \$75 per tonne

Further information on State Government waste categories can be found at www.qld.gov.au/waste-disposal-levy.

If I only have a load of recyclable materials, will I be charged a fee at the waste facility?

If the recyclable waste relates to a business, commercial or industrial activity, only the existing council gate charges will apply, not the waste levy.

Please note that contaminated or mixed waste that cannot be recycled must be sent to landfill and therefore the State Government waste levy will apply.

What help is available?

The State Government is funding ecoBiz, a free program which helps businesses reduce their energy, water and waste costs, and prepare for the introduction of the waste levy. Interested businesses can visit the ecoBiz website: www.ecobiz.qld.gov.au

Planet Ark Business Recycling also provides useful tips for reducing waste: www.businessrecycling.com.au

I am a charity/not-for-profit organisation. Will the Waste Levy still apply?

The State Government has an exemption in place for eligible not-for-profit organisations and has engaged the National Association of Charitable Recycling Organisations to engage directly with these organisations. For more information visit www.nacro.org.au

Levy exemptions and discounts

Some waste may be exempt from the waste levy, either by automatic exemption or by approval from the Department of Environment and Science. Exempt waste will not incur the levy.


Some waste types are automatically exempt from the levy under the Waste Reduction and Recycling Act 2012, and do not require an application, including waste resulting from a declared natural disaster such as a cyclone, bushfire or flood.

Other exemptions are available on application, including waste received as part of charity donations that cannot practicably be re-used, recycled or sold. A full list of exempt waste categories and criteria can be found in the waste levy legislation and is available at www.qld.gov.au/waste-disposal-levy

Please note the new requirements are expected to increase waiting and disposal times at council's waste facilities as the new processes and reporting measures are introduced. Your understanding and patience while our community initially adapts to the service impacts of the waste levy is appreciated. More information including user guides for each council waste facility as well as hints on how to sort and arrange your waste in skips, to help minimise your time on the site, will be added to council's website prior to 1 July 2019 to help you plan, prepare and adapt to the changes.

Please see over page for information for residents.

Queensland waste levy: www.qld.gov.au/waste-disposal-levy
Moreton Bay Region waste facilities and recycling: www.mbr.qld.gov.au/waste-waste-services. Publication date: May 2019

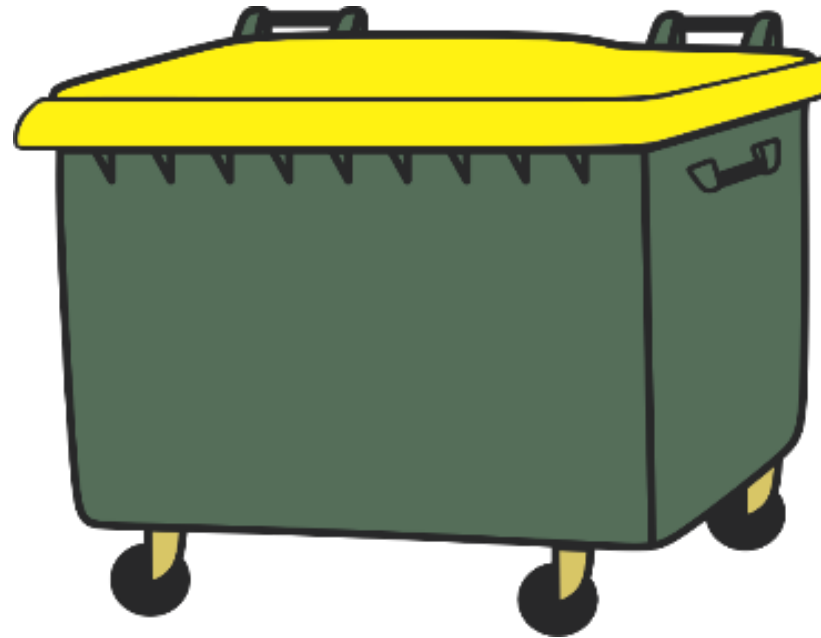


Questions

Materials Recovery Facility (MRF)



Recycling



Materials Recovery Facility (MRF)



What can go into the recycling bin?



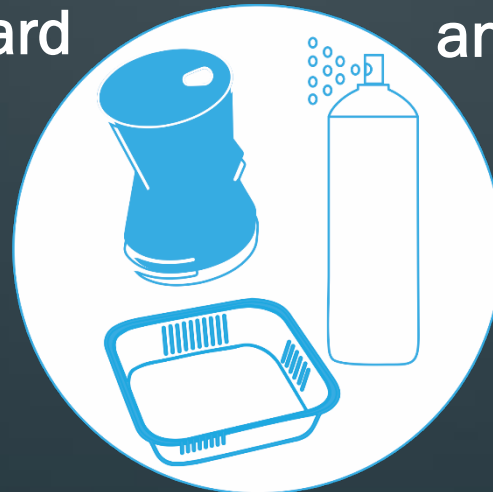
Paper and cardboard



Plastic bottles and containers



Steel cans and aerosols



Aluminium cans, aerosols and foil



Glass bottles and jars



What can't go into the recycling bin?



No plastic bags, wrap or polystyrene

No food scraps, rubbish or vegetation

No hazardous materials

Don't trap your recycling

Contamination rate in MBRC recycling bins

16.8% (June 2021)

Questions

Other ways to recycle



Other ways to recycle



Over 344,161,076 containers returned to date.

Creating a recycling scheme to keep Queensland beautiful

As a state, we're great at many things. However, when it comes to recycling, Queensland can do a lot better. In fact, we have one of the lowest recycling rates in Australia, at around 44%.

Each year, approximately three billion beverage containers are generated in our state alone and are the second most littered item.

So to help us all improve our recycling efforts and keep our beautiful environment litter-free, Containers for Change scheme lets people get a 10 cent refund for each eligible container returned to a refund point. Find out more and sign up now...


- Fundraising opportunity


Council waste management facilities


Landfill – losing resources



Landfill – making a new cell to fill


 **Reduce. Reuse. Recycle**





Recycle Right!
Sort and cover
your load.

For more information
phone 3205 0555 or visit
www.moretonbay.qld.gov.au/waste



Crushing concrete for reuse



Mulching greenwaste



Metal recycling collection



Treasure Markets



Treasure Markets – donated unwanted waste is full of treasures



Resource Recovery Areas for oil, batteries, tyres, whitegoods, etc.



Sustainable fundraising and purchasing opportunities

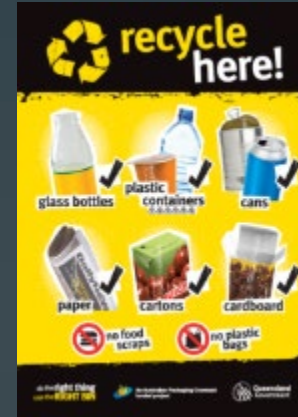
Make fundraising items and choose promotional items that are reusable, compostable or have recycled content

- Reusable or compostable serving ware, beeswax wraps, reusable drink containers in metal
- Uniforms that can be recycled or shredded and composted
- Send back packaging to suppliers where possible



Sustainable fundraising and purchasing opportunities

- Run a waste awareness program
- Install clear bin signage
- Partake in regular clean-up events – Clean Up Australia Day Sunday 6 March 2022



Questions

Single-use plastics ban



Get ready for the
single-use plastic items ban
starting on 1 September 2021

Designed to be used just once, and then thrown away, many single-use plastic items are part of the growing issue of plastic waste and pollution.

- Queensland Government bans some plastic items
- More information on Council's and Queensland Government websites
- The ban applies to all businesses, places of learning, not-for-profits unless exempt

Single-use plastics ban

Single-use plastic items included in the ban:

- straws: regular straws, flexible straws, straws with a scoop, cocktail straws and bubble tea straws
- stirrers: hot or cold drink stirrers, swizzle sticks and hot or cold food stirrers
- plates and bowls including single-use expanded polystyrene plates
- cutlery: knives, forks, spoons, teaspoons, sample tasting spoons, soup spoons, chopsticks, splayds and sporks
- expanded polystyrene takeaway food containers and cups.



<https://www.moretonbay.qld.gov.au/Services/Waste-Recycling>

Resources

Information sheet

 Rethink waste. Let's get it sorted


Kerbside Recycling

 Council provides a fortnightly recycling collection service for domestic, multiple dwelling and commercial properties throughout the Moreton Bay region. The yellow-lidded wheelie bin is available in 120L, 240L or 360L sizes and is for certain acceptable materials only.


Where does my recycling go?

The kerbside recycling is taken to a Materials Recovery Facility, also known as the MRF ("murf"), where it is sorted into material types based on material properties. The materials are then sold to be recycled. The more contamination in the recycling bin, the harder it is for the MRF to sort the materials out. See next page for details on the MRF.

What CAN go in my recycling bin?



What CAN'T go in my recycling bin?





Did you know?

Not everything recyclable can go into your recycling bin. Other recyclable materials can be taken to Council's Waste Management Facilities or other designated drop off sites.

What is contamination?

Contamination includes items that aren't accepted in the recycling bin such as soft plastics, shredded or laminated paper, food, garden waste, hazardous materials and bulky items. Contamination affects recyclable materials and reduces the efficiency of the MRF. Please ensure your recycling bin has no contamination.



 Search Moreton Bay Regional Council  [Sign in](#)

Home / Services and information / Waste and recycling / Waste education

Waste education

Saving resources, reducing waste going to landfill and living sustainably are responsible changes we all need to make for a safer and healthier future.

Information on what can go into recycling bins has never been more important with the responsibility for Australia and countries around the world to manage waste and reprocess recyclable materials locally.

Food and garden waste is too valuable to put into the general waste bin and eventually into landfill. Watch how easily you can recover your household organic material and create mulch, compost and liquid fertilisers for growing healthy gardens and home-grown fruit and vegetables.

For more information:


- [Composting, worm farming and mulching](#)
- [Kerbside recycling and understanding the waste hierarchy](#)
- [Waste education and community engagement plan](#) - Education programs and initiatives guiding and supporting the community to reduce waste, conserve resources, and achieve the targets of Council's [Waste reduction and recycling plan](#) and the [Queensland waste strategy](#).


Get involved

How rubbish are you at recycling? [Take our quiz to find out!](#)

Get your school or early learning centre involved in our [2020 Regional recycler competition](#).

Find out about our [Sustainability Champions award](#).

Education videos 

Education programs and tours 

<https://www.moretonbay.qld.gov.au/Services/Waste-Recycling>

Resources

The screenshot shows the Queensland Government website. At the top left is the Queensland Government logo. To its right is a search bar with the text "Search website" and a "Search" button. Below the logo are links for "For Queenslanders" and "Contact us". A breadcrumb trail reads: "Home > Environment, Land and water > [...] > Plastic pollution reduction > Single-use plastic items ban".

The main content area is titled "Single-use plastic items ban". On the left is a sidebar with the following items:

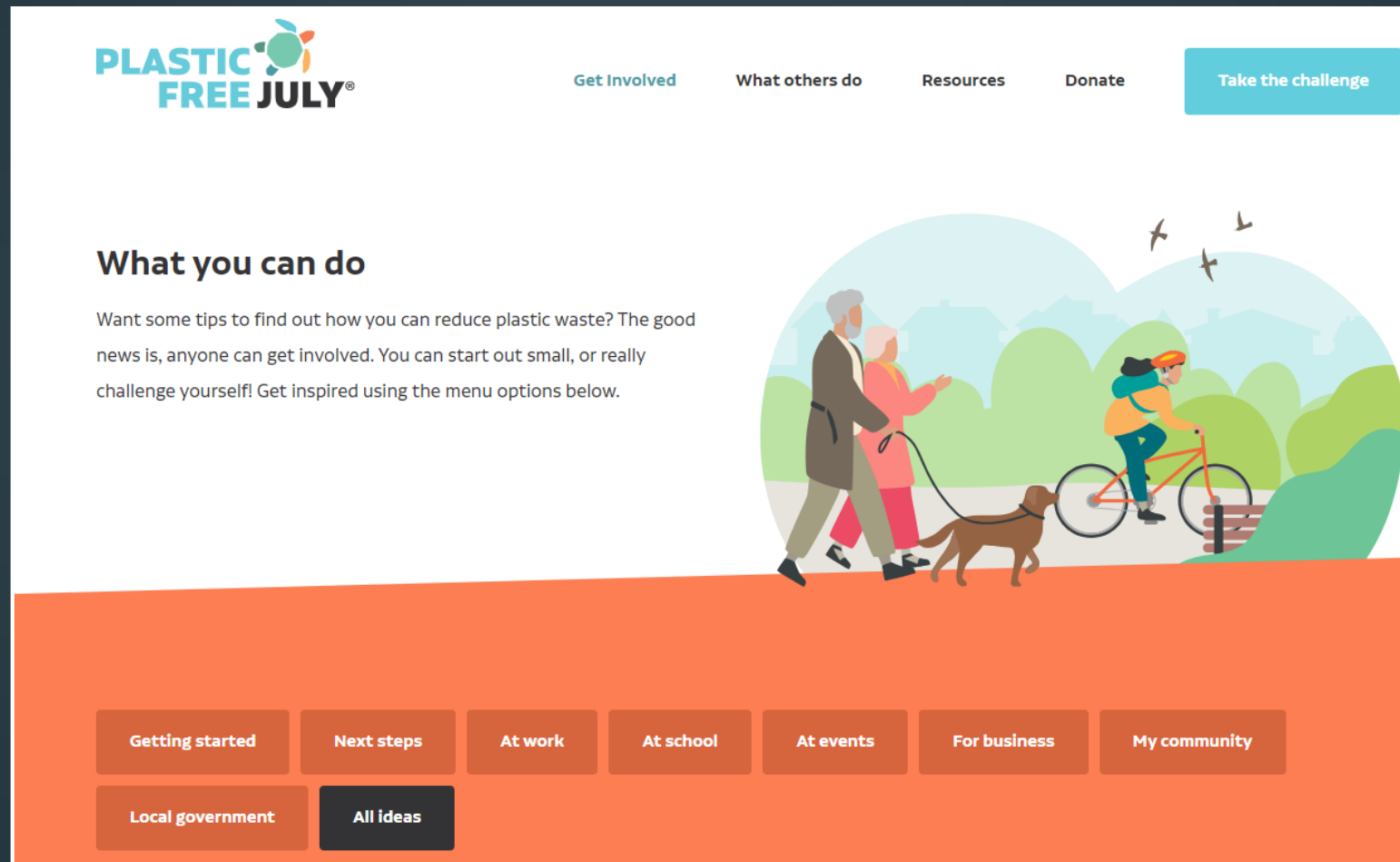
- Plastic pollution reduction
- Tackling plastic waste
- How to reduce consumption of avoidable and single-use plastics
- Single-use plastic items ban

The main content area contains four sections:

- About the ban**: Learn more about the ban which started on 1 September 2021. (Accompanied by an icon of various plastic items).
- Information for people with disability or healthcare needs**: Find out what the ban means for people with disability or healthcare needs. (Accompanied by an image of a person using a wheelchair).
- Information for businesses**: The ban applies to all Queensland businesses. Find out your obligations. (Accompanied by an image of hands holding a stack of white plastic containers).
- Information for not-for-profit organisations**: Find out more about how the ban applies to not-for-profit organisations. (Accompanied by an image of people in a kitchen setting).

<https://www.qld.gov.au/plasticsban>

Resources




PLASTIC FREE JULY®

[Get Involved](#) [What others do](#) [Resources](#) [Donate](#) [Take the challenge](#)

What you can do

Want some tips to find out how you can reduce plastic waste? The good news is, anyone can get involved. You can start out small, or really challenge yourself! Get inspired using the menu options below.



[Getting started](#) [Next steps](#) [At work](#) [At school](#) [At events](#) [For business](#) [My community](#)

[Local government](#) [All ideas](#)

www.plasticfreejuly.org/get-involved/what-you-can-do/

Questions

Questions Thank you

MBRCWasteEd@envirocom.com.au

www.moretonbay.qld.gov.au/Services/Waste-Recycling