

Image 17 – Acceptable Buildings fronting North Lakes Drive will include zero setbacks and 3.7m wide awnings to provide continual pedestrian shelter.



Image 18 – Acceptable New buildings and landscaping works will ensure a continuous urban edge.



Image 19 – Acceptable Outward oriented activity to animate the adjacent street and pedestrian spaces.



Image 20 – Acceptable  
Ground floor activities will be encouraged to animate the street and pedestrian spaces.



Image 21 – Acceptable  
Shade structures, outdoor pedestrian streets, courtyards, overhangs, screens and ventilated spaces are an appropriate response for the South-East Queensland climate.



Image 22 – Acceptable  
Use of paving materials to signify changes in the traffic and pedestrian environment.



Image 23 – Acceptable Signage and architectural graphics to be coordinated with the building design.

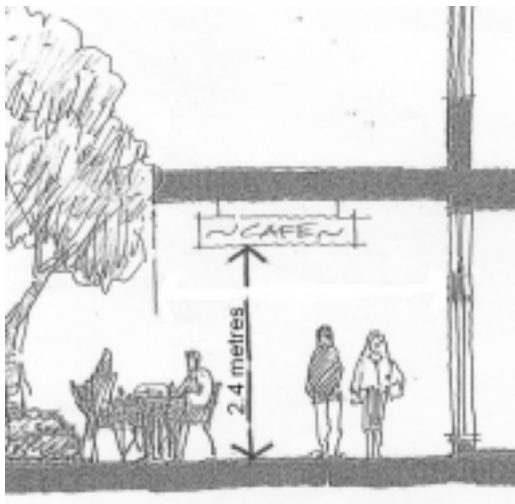


Image 24 – Acceptable Signage above pedestrian areas to have a minimum clearance of 2.4 metres