






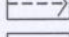

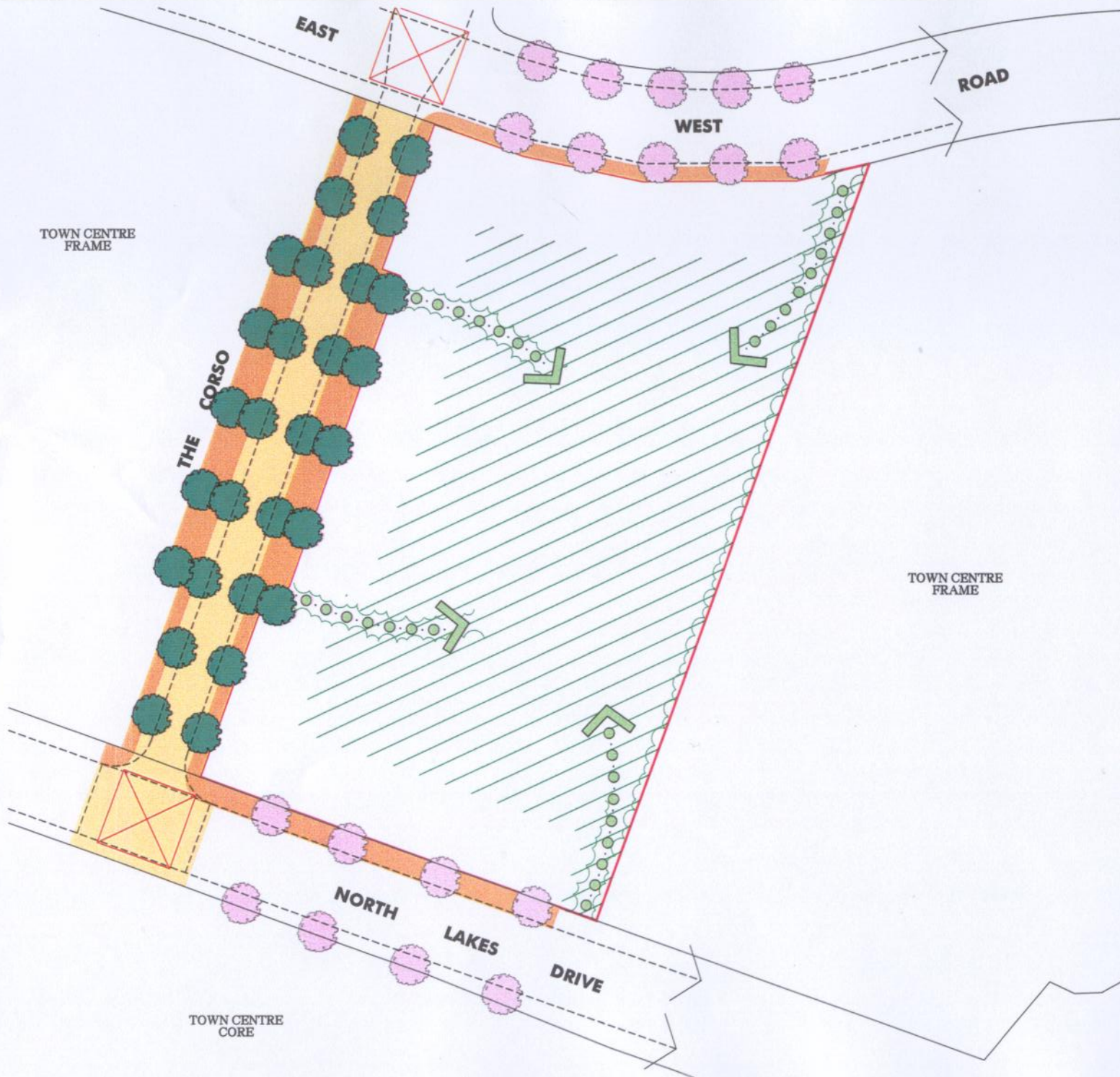


LEGEND

-  FEATURE PLANTING AND HIGH QUALITY URBAN STREET ENVIRONMENT TO BE ESTABLISHED (REFER SECTIONS 4.2.2, 6.2.3 AND 7.6)
-  LANDSCAPING IN THE CORSO TO CREATE AN ATTRACTIVE PEDESTRIAN ENVIRONMENT WITH FEATURE PLANTINGS IN KERB BUILDOUTS (REFER SECTIONS 4.2.2, 6.3.3 AND 7.6)
-  LANDSCAPING ON ENTRY ROADS AND/OR PEDESTRIAN ROUTES TO TAKE INTO ACCOUNT DRIVER'S SIGHT LINES AND PEDESTRIAN SAFETY
-  AT GRADE CAR PARKING AREA TO BE LANDSCAPED WITH SHADE TREES, FURNISHINGS AND LIGHTING TO PERMIT CASUAL SURVEILLANCE (REFER SECTION 7.8.1)
-  PEDESTRIAN AND/OR VEHICULAR ACCESS TO BE DENOTED BY PAVING TREATMENT (REFER SECTION 7.8.2)
-  FOOTPATHS AND VERGE TREATMENTS TO EMPHASISE PEDESTRIAN FOCUS AND TO ACCOMMODATE STREET ACTIVITIES (REFER SECTIONS 6.2.3, 6.3.3 AND 6.4.3)
-  VEHICULAR CARRIAGEWAY TREATMENTS TO ENHANCE PEDESTRIAN ENVIRONMENT
-  RECREATIONAL PATHS
-  SECTOR BOUNDARY



TOWN CENTRE FRAME 'A' PRECINCT TOWN CENTRE FRAME 'A' SECTOR PLAN

SECTOR LANDSCAPE PLAN

0 10 20 30 40 50 metres



Scale 1:1000 AT A3

File No. F 2.5.19

Dgn No. TCFA-SP1-F06

JULY 2002

FIGURE 6