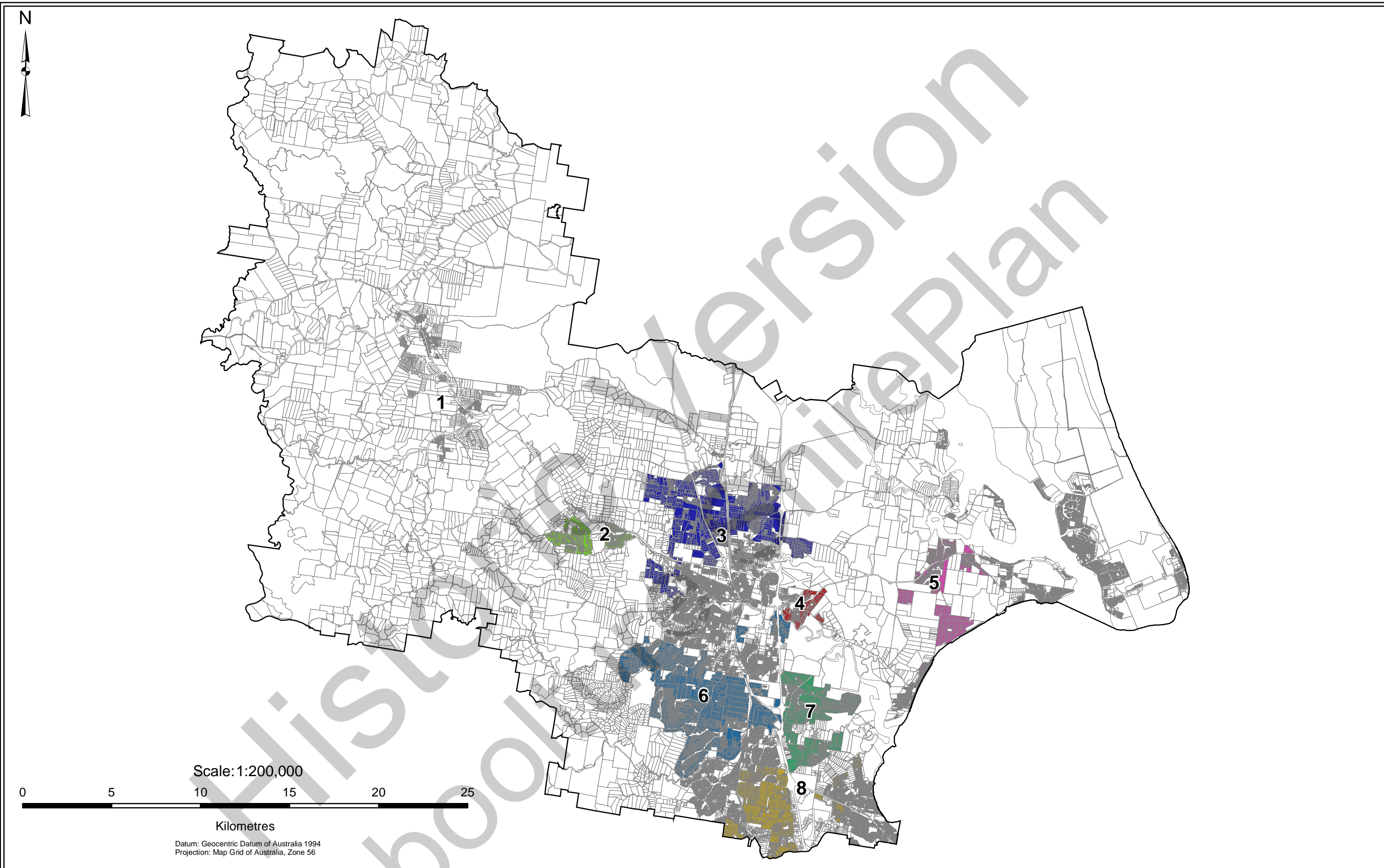



Schedule 6 Rural Residential Precincts

The maps that comprise this schedule are the following:

- (a) Rural Residential Areas;
- (b) Rural Residential Area 1 Woodford/D'Aguilar;
- (c) Rural Residential Area 2 Wamuran;
- (d) Rural Residential Area 3 Caboolture/Elimbah;
- (e) Rural Residential Area 4 Caboolture East;
- (f) Rural Residential Area 5 Ningi;
- (g) Rural Residential Area 6 Morayfield;
- (h) Rural Residential Area 7 Burpengary; and
- (i) Rural Residential Area 8 Narangba/Deception Bay.

Historic Version
Caboolture ShirePlan





Caboolture ShirePlan
Effective 01 December 2014

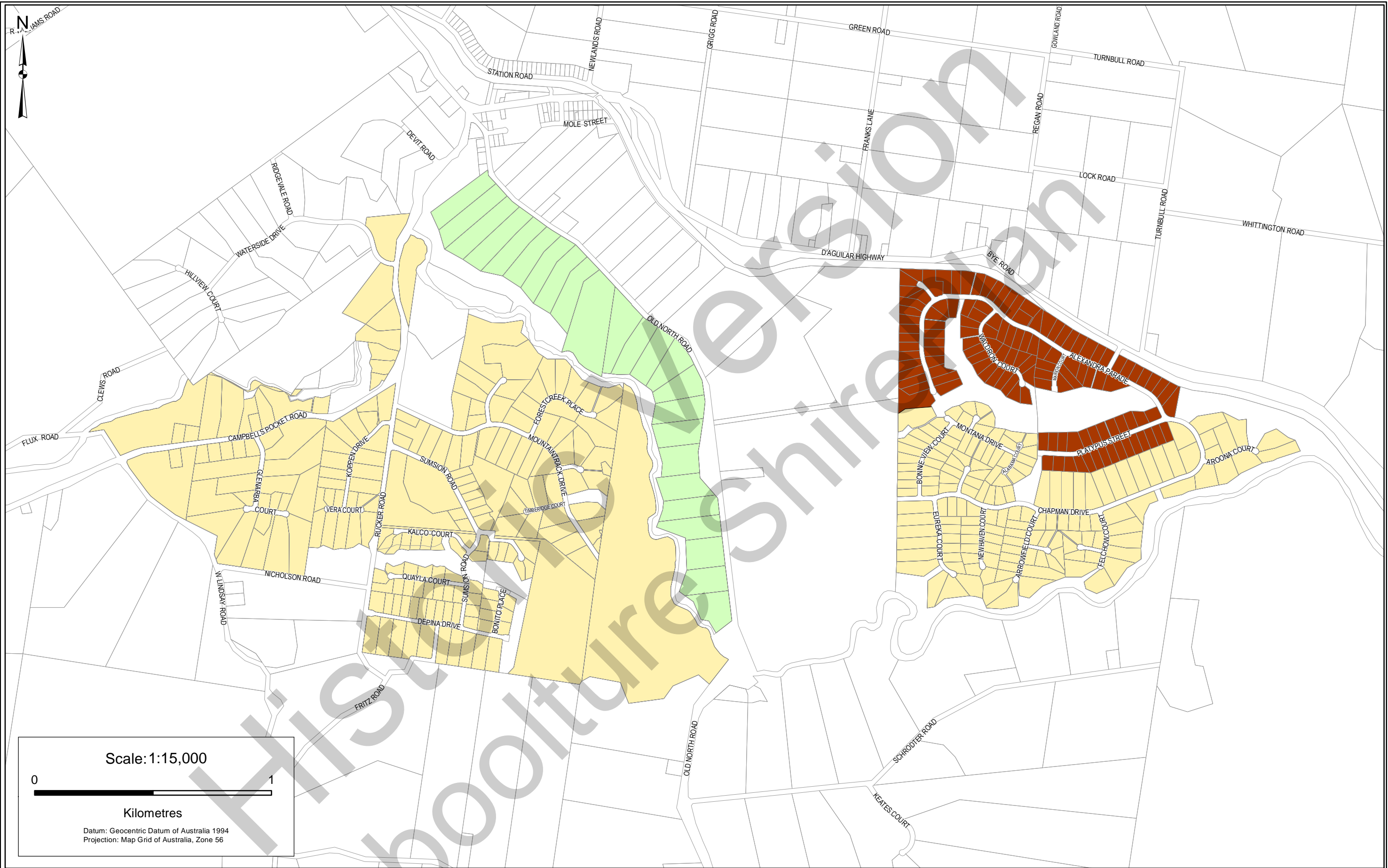
Disclaimer:

While every care is taken to ensure the accuracy of this data, Caboolture Shire Council and the Department Of Natural Resources and Mines make no representations or warranties about its accuracy, reliability, completeness, or suitability for any particular purpose and disclaims all responsibility and all liability (including without limitation, liability in negligence) for all expenses, losses, damages (including indirect or consequential damage) and costs which might be incurred as a result of the data being inaccurate or incomplete in any way and for any reason.

1. Woodford / D'Aguilar	5. Ningi
2. Wamuran	6. Morayfield
3. Caboolture / Elimbah	7. Burpengary
4. Caboolture East	8. Narangba / Deception Bay

NB. Refer to Table 7.21 in Part 7 Division 16 for subdivision provisions.

Rural Residential Areas







Scale: 1:15,000

0 1

Kilometres

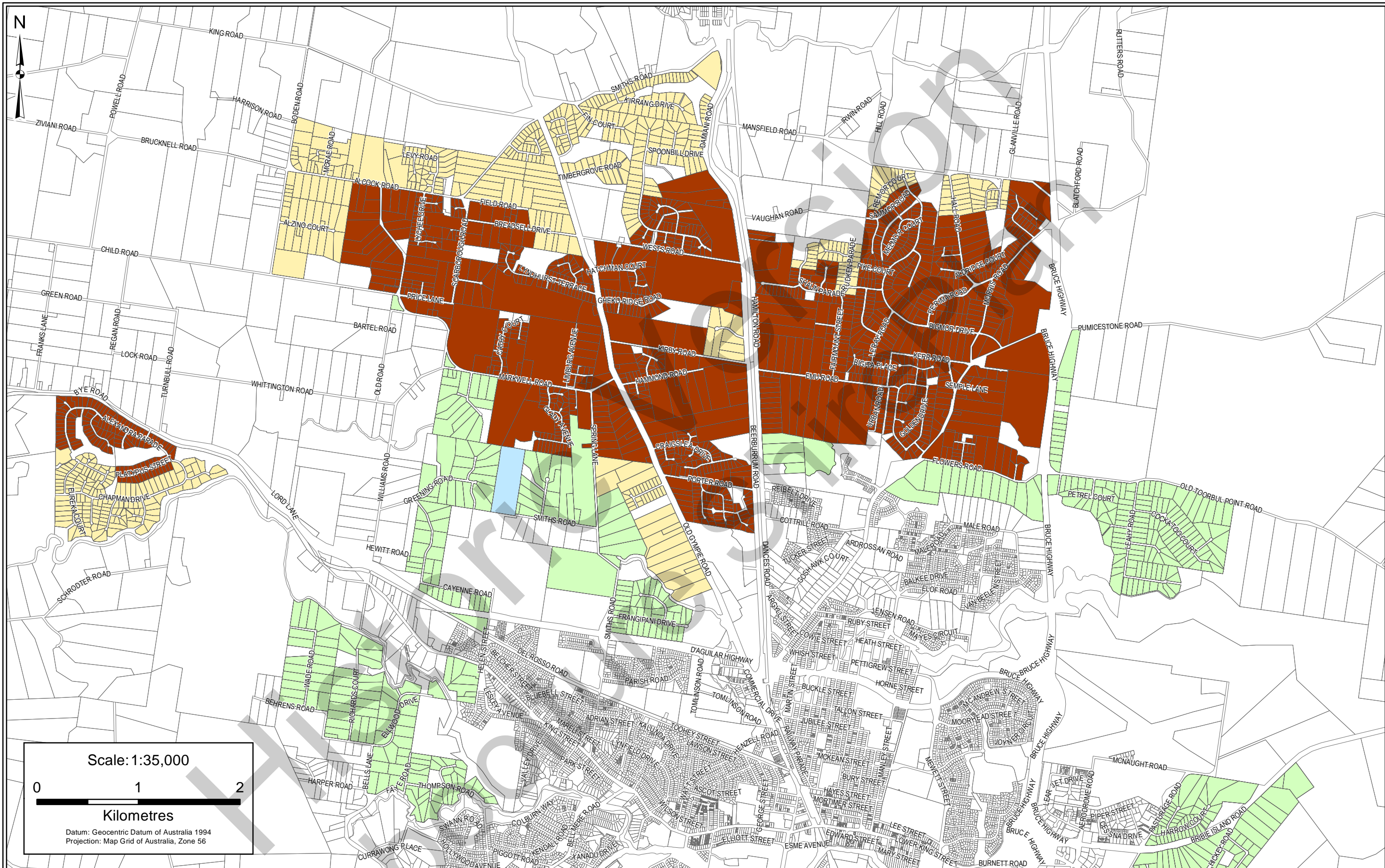
Datum: Geocentric Datum of Australia 1994
Projection: Map Grid of Australia, Zone 56

Disclaimer:
While every care is taken to ensure the accuracy of this data, Moreton Bay Regional Council and the Department of Environment and Resource Management make no representations or warranties about its accuracy, reliability, completeness, or suitability for any particular purpose and disclaims all responsibility and all liability (including without limitation, liability in negligence) for all expenses, losses, damages (including indirect or consequential damage) and costs which might be incurred as a result of the data being inaccurate or incomplete in any way and for any reason.

- | | | | |
|---|------------------|---|------------|
|  | BUFFER AREAS |  | RESTRICTED |
|  | PARK RESIDENTIAL |  | TRANSITION |

NB. Refer to Table 7.21 in Part 7 Division 16 for subdivision provisions.

Rural Residential Area 2 Wamuran



Caboolture ShirePlan
Effective from 15 October 2012

Disclaimer:

While every care is taken to ensure the accuracy of this data, Moreton Bay Regional Council and the Department of Environment and Resource Management make no representations or warranties about its accuracy, reliability, completeness, or suitability for any particular purpose and disclaims all responsibility and all liability (including without limitation, liability in negligence) for all expenses, losses, damages (including indirect or consequential damage) and costs which might be incurred as a result of the data being inaccurate or incomplete in any way and for any reason.



BUFFER AREAS



PARK RESIDENTIAL



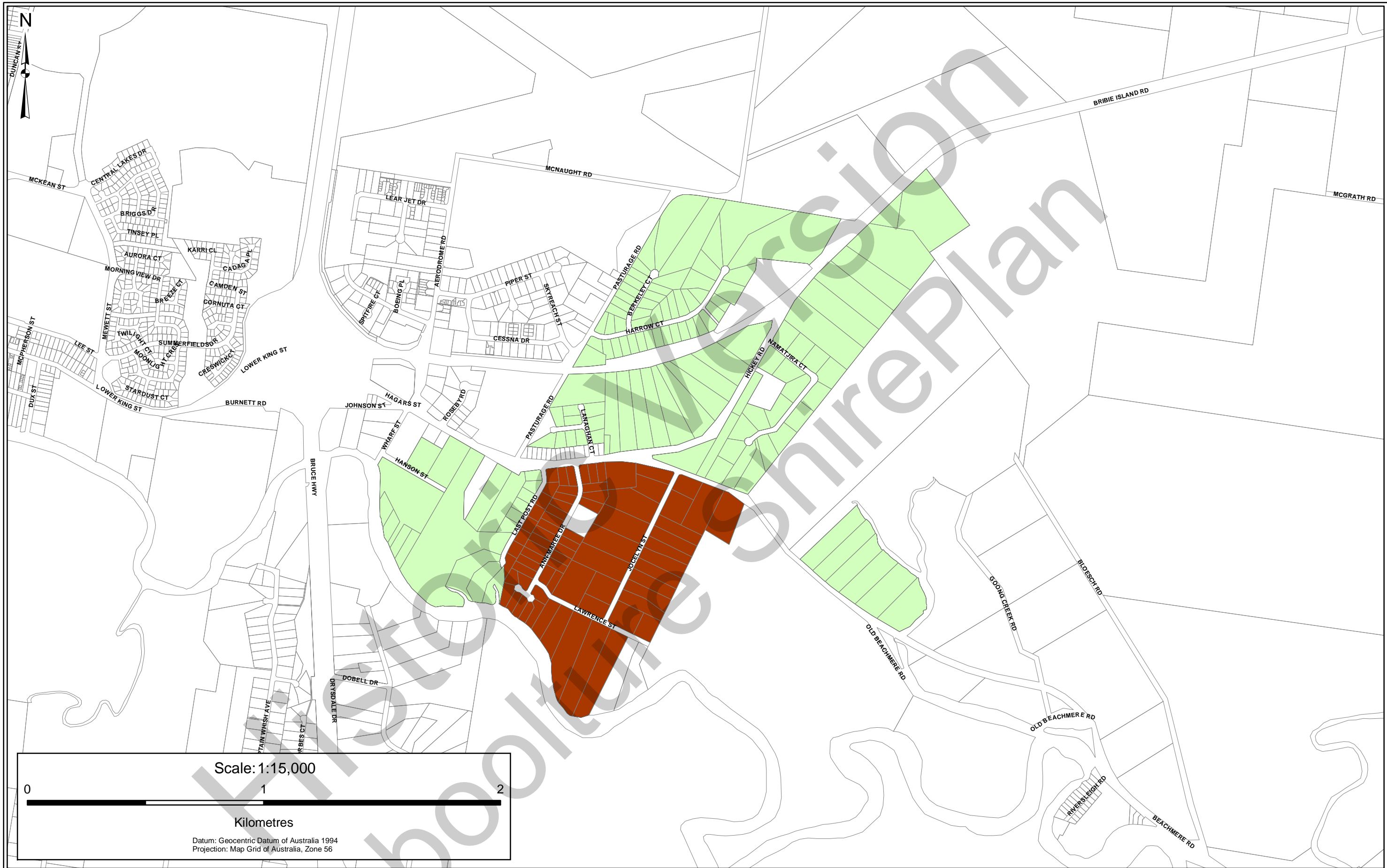
RESTRICTED



TRANSITION

NB. Refer to Table 7.21 in Part 7 Division 16 for subdivision provisions.

Rural Residential Area 3 Caboolture/Elimbah



Scale: 1:15,000

0 1 2

Kilometres

Datum: Geocentric Datum of Australia 1994
Projection: Map Grid of Australia, Zone 56



Caboolture ShirePlan
Effective 12 December 2005

Disclaimer:

While every care is taken to ensure the accuracy of this data, Caboolture Shire Council and the Department Of Natural Resources and Mines make no representations or warranties about its accuracy, reliability, completeness, or suitability for any particular purpose and disclaims all responsibility and all liability (including without limitation, liability in negligence) for all expenses, losses, damages (including indirect or consequential damage) and costs which might be incurred as a result of the data being inaccurate or incomplete in any way and for any reason.



BUFFER AREAS



RESTRICTED



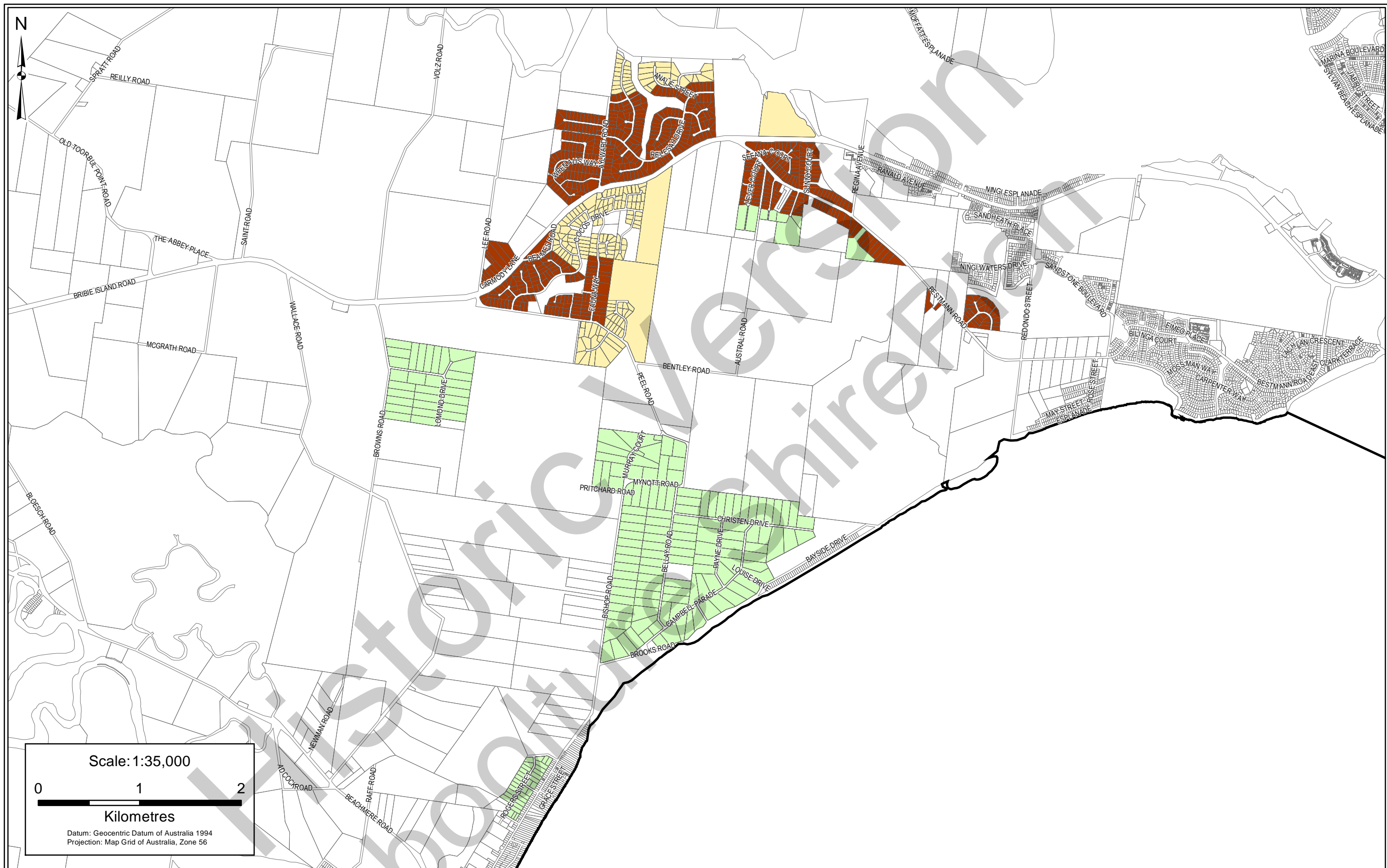
PARK RESIDENTIAL



TRANSITION

NB. Refer to Table 7.21 in Part 7 Division 16 for subdivision provisions.

Rural Residential Area 4
Caboolture East



Caboolture ShirePlan
Effective from 15 October 2012

Disclaimer:

While every care is taken to ensure the accuracy of this data, Moreton Bay Regional Council and the Department of Environment and Resource Management make no representations or warranties about its accuracy, reliability, completeness, or suitability for any particular purpose and disclaims all responsibility and all liability (including without limitation, liability in negligence) for all expenses, losses, damages (including indirect or consequential damage) and costs which might be incurred as a result of the data being inaccurate or incomplete in any way and for any reason.



BUFFER AREAS



PARK RESIDENTIAL



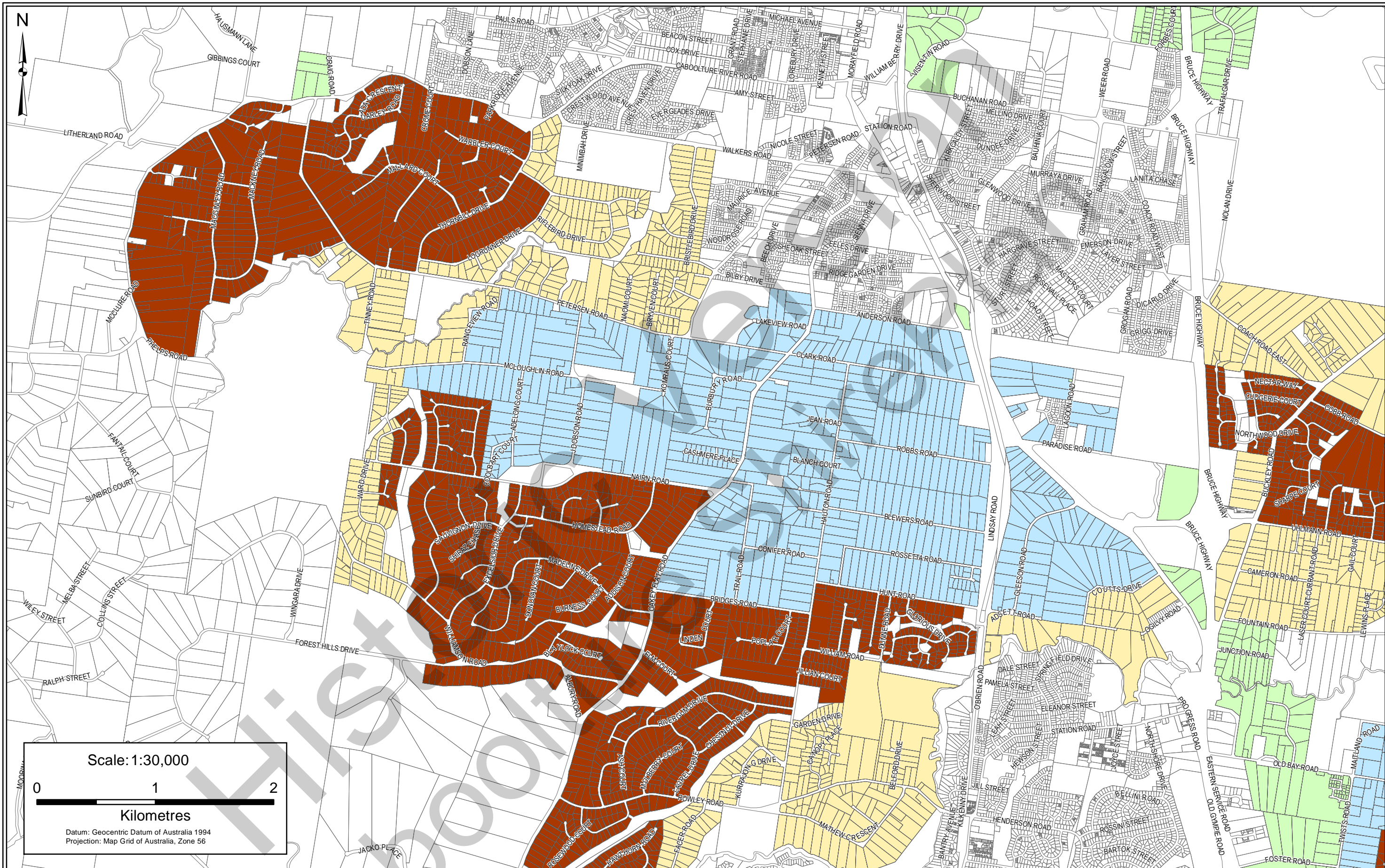
RESTRICTED



TRANSITION

NB. Refer to Table 7.21 in Part 7 Division 16 for subdivision provisions.

Rural Residential Area 5 Ningi



Moreton Bay
Regional Council

Disclaimer:

While every care is taken to ensure the accuracy of this data, Moreton Bay Regional Council and the Department of Environment and Resource Management make no representations or warranties about its accuracy, reliability, completeness, or suitability for any particular purpose and disclaims all responsibility and all liability (including without limitation, liability in negligence) for all expenses, losses, damages (including indirect or consequential damage) and costs which might be incurred as a result of the data being inaccurate or incomplete in any way and for any reason.

Caboolture ShirePlan
Effective from 01 December 2014

BUFFER AREAS

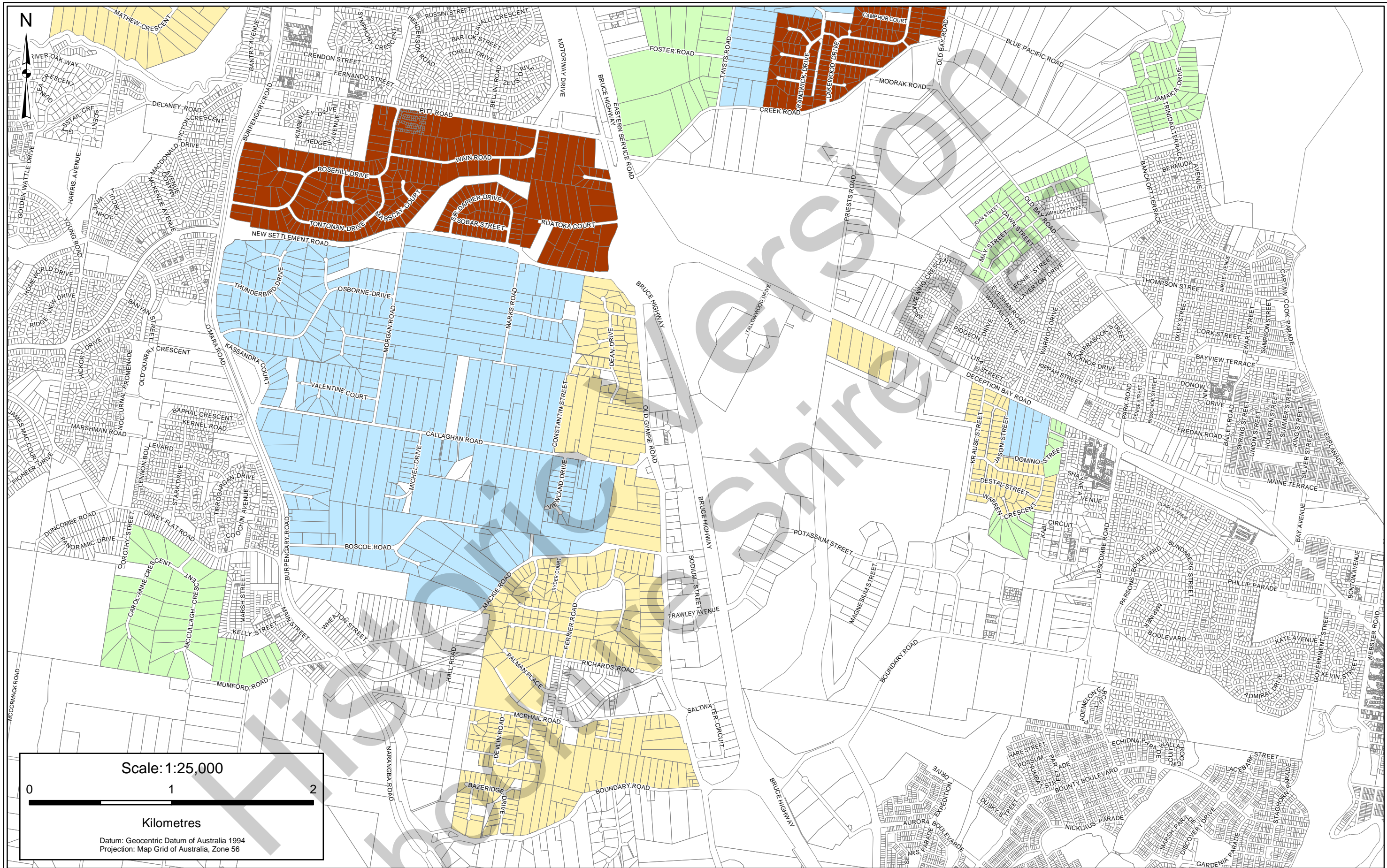
PARK RESIDENTIAL

RESTRICTED

TRANSITION

NB. Refer to Table 7.21 in Part 7 Division 16 for subdivision provisions.

Rural Residential Area 6 Morayfield



Caboolture ShirePlan
Effective 2 July 2012

Disclaimer:

While every care is taken to ensure the accuracy of this data, Caboolture Shire Council and the Department Of Natural Resources and Mines make no representations or warranties about its accuracy, reliability, completeness, or suitability for any particular purpose and disclaims all responsibility and all liability (including without limitation, liability in negligence) for all expenses, losses, damages (including indirect or consequential damage) and costs which might be incurred as a result of the data being inaccurate or incomplete in any way and for any reason.

Rural Residential Area 8

Narangba

Deception Bay