

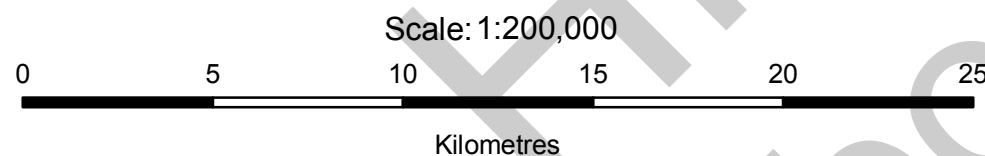
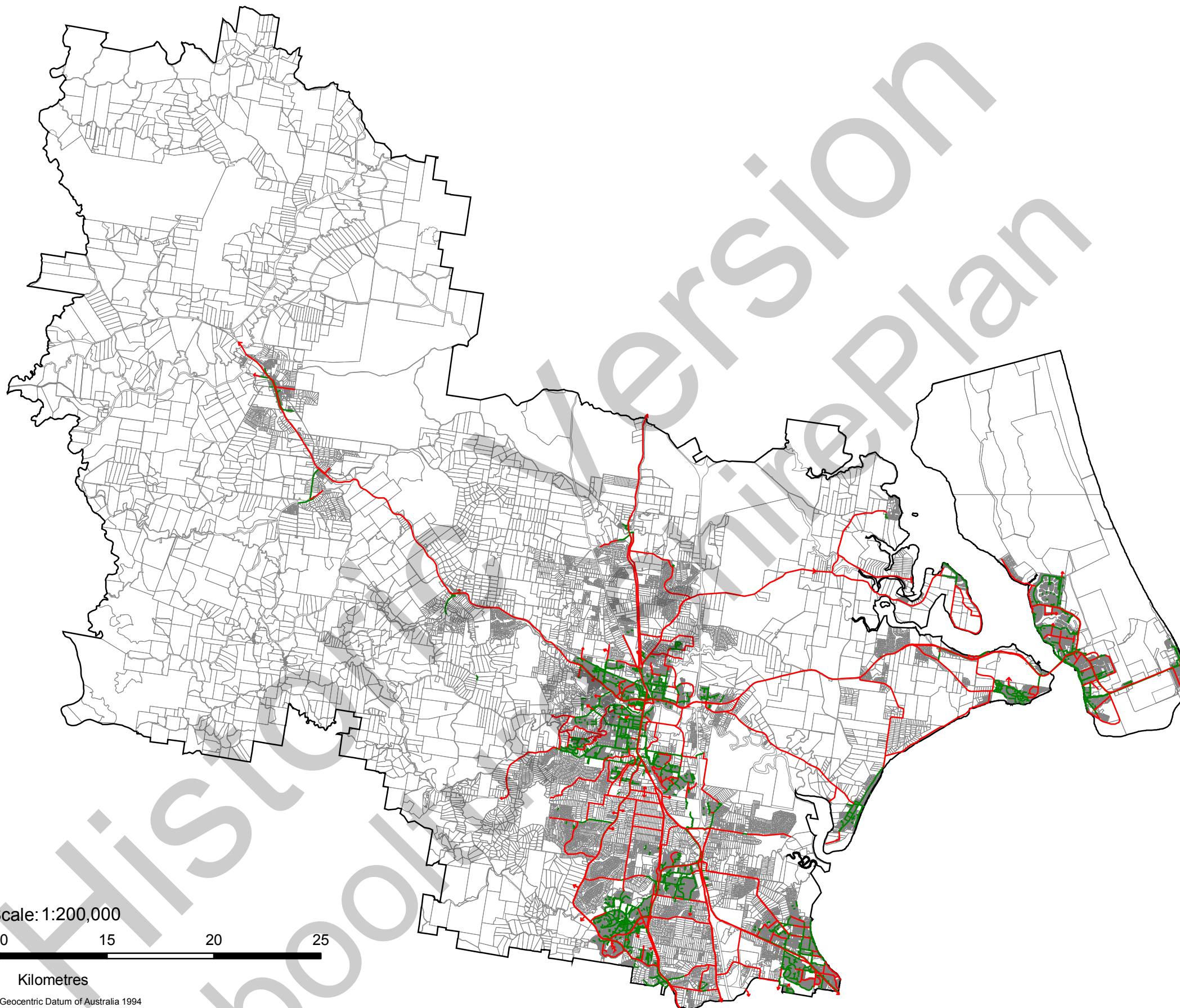
### **Schedule 1 Bicycle and Pedestrian Network**

The map that comprises this schedule is the following:

- (a) Caboolture Shire Bicycle and Pedestrian Network.

Historic Version  
Caboolture ShirePlan

Historic Version  
Caboolture ShirePlan



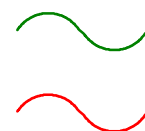
Datum: Geocentric Datum of Australia 1994  
Projection: Map Grid of Australia, Zone 56



Caboolture ShirePlan  
Effective 22 December 2008

**Disclaimer:**

While every care is taken to ensure the accuracy of this data, Caboolture Shire Council and the Department Of Natural Resources and Mines make no representations or warranties about its accuracy, reliability, completeness, or suitability for any particular purpose and disclaims all responsibility and all liability (including without limitation, liability in negligence) for all expenses, losses, damages (including indirect or consequential damage) and costs which might be incurred as a result of the data being inaccurate or incomplete in any way and for any reason.



Existing Bicycle and Pedestrian Network

Future Bicycle and Pedestrian Network

## Schedule 1 Caboolture Shire Bicycle and Pedestrian Network