

- Dredge Zones
- Intended 16/17 Campaign



Copyright Moreton Bay Regional Council and Department of Environment and Resource Management

Moreton Bay Regional Council supplies this map under the following conditions:- Mapping details are supplied from information contained in the Council's records which may have been furnished to the Council by other persons. Moreton Bay Regional Council gives no warranty or guarantee of any kind, expressed, implied, or statutory, to the correctness or accuracy of the map details or the degree of compliance with any Council standards in this matter. Persons making decisions with financial or legal implications must not rely upon the map details shown on this plan for the purpose of determining whether any particular facts or circumstances exist and the Moreton Bay Regional Council (and its officers and agents) expressly disclaims responsibility for any loss or damage suffered as a result of placing reliance upon this information. In order to determine the zoning of any parcel of land, a Town Planning Certificate should be obtained or the Planning Scheme perused.

DCDB is reproduced with the permission of the State of Queensland (Department of Environment and Resource Management)

SCALE 1:9,000



Projection: Horizontal Datum: Map Grid of Australia, Zone 56 Geocentric Datum of Australia 1994

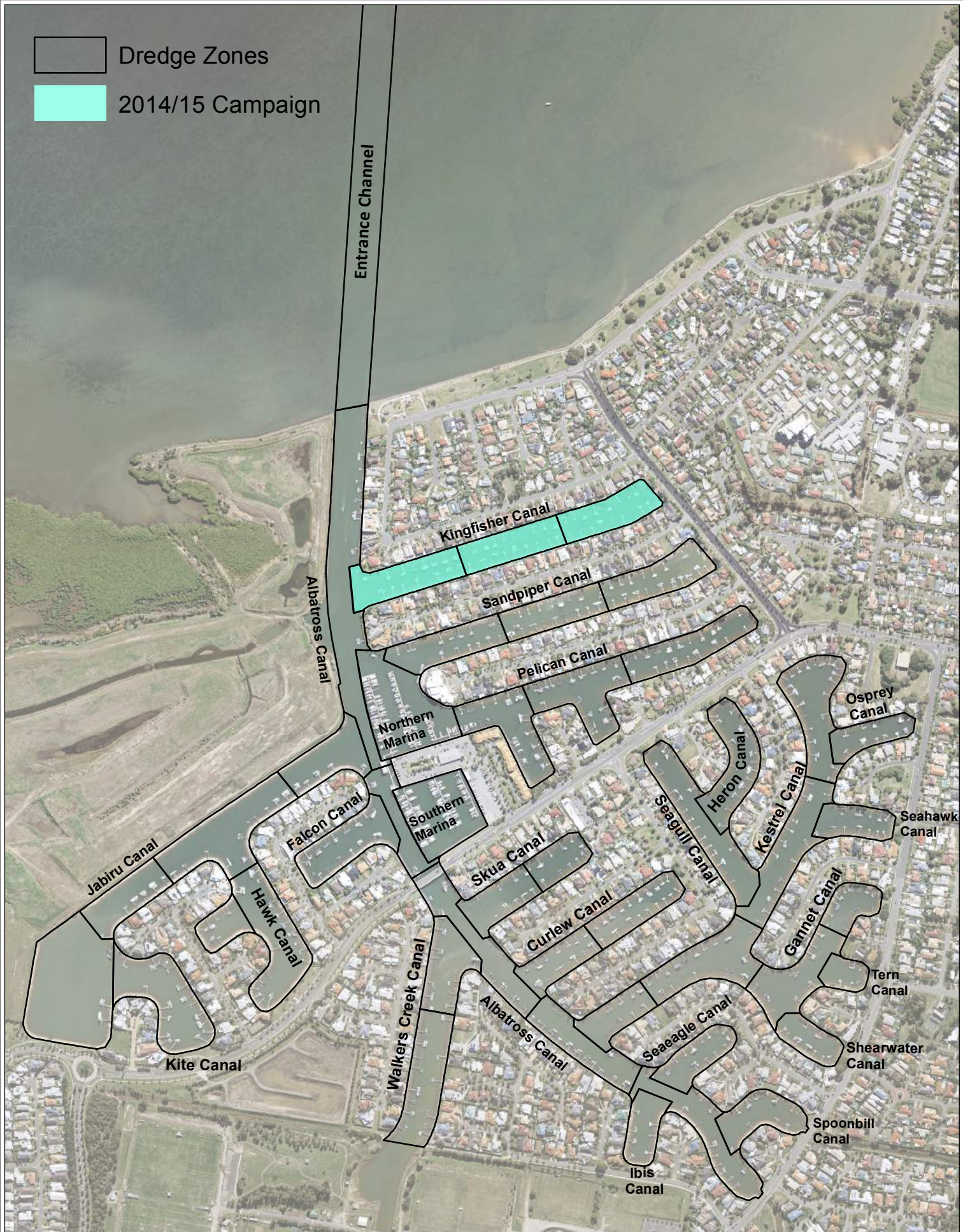
Moreton Bay Regional Council
PO Box 159
Caboolture QLD 4500
Ph: (07) 3205 0555
Fax: (07) 3480 6710
Email: gis@moretonbay.qld.gov.au
Web: www.moretonbay.qld.gov.au

NEWPORT WATERS


Intended 2016/17 Dredging Campaign

PRODUCED BY:	DRAINAGE WATERWAYS & COASTAL PLANNING
UNIT LOCATION:	Pine Rivers District Office, Stathpine QLD
COMPILED BY:	freyjacher
DATE PRODUCED:	24/08/2016

 Dredge Zones
 2014/15 Campaign



Copyright Moreton Bay Regional Council and Department of Environment and Resource Management
 Moreton Bay Regional Council supplies this map under the following conditions:- Mapping details are supplied from information contained in the Council's records which may have been furnished to the Council by other persons. Moreton Bay Regional Council gives no warranty or guarantee of any kind, expressed, implied, or statutory, to the correctness or accuracy of the map details or the degree of compliance with any Council standards in this matter. Persons making decisions with financial or legal implications must not rely upon the map details shown on this plan for the purpose of determining whether any particular facts or circumstances exist and the Moreton Bay Regional Council (and its officers and agents) expressly disclaims responsibility for any loss or damage suffered as a result of placing reliance upon this information. In order to determine the zoning of any parcel of land, a Town Planning Certificate should be obtained or the Planning Scheme perused.
 DCDB is reproduced with the permission of the State of Queensland (Department of Environment and Resource Management)



SCALE 1:9,000

0 50 100 Metres

Projection: Horizontal Datum: Map Grid of Australia, Zone 56 Geocentric Datum of Australia 1994





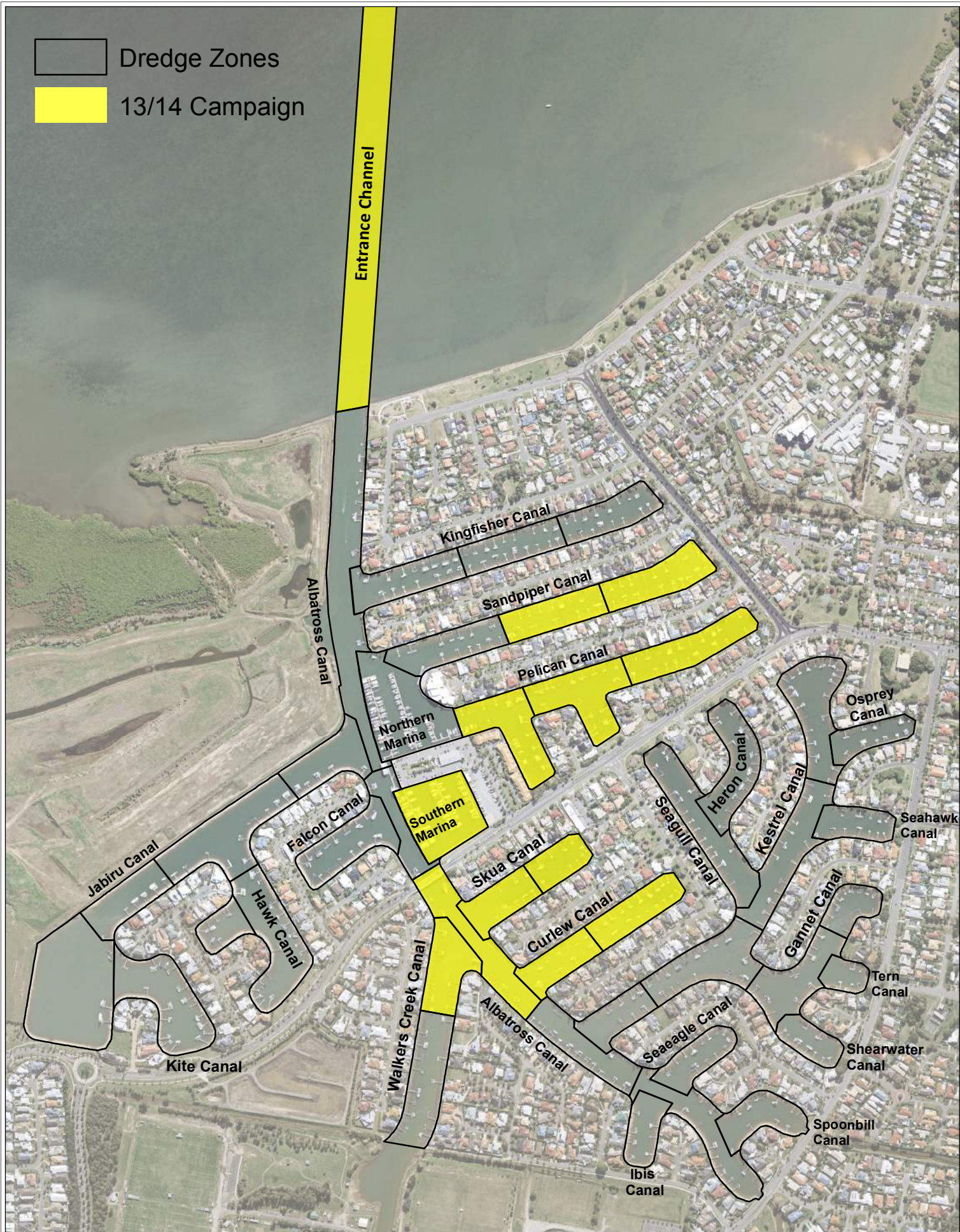
Moreton Bay Regional Council
 PO Box 159
 Caboolture QLD 4500
 Ph: (07) 3205 0555
 Fax: (07) 3480 6710
 Email: gis@moretonbay.qld.gov.au
 Web: www.moretonbay.qld.gov.au

NEWPORT WATERS

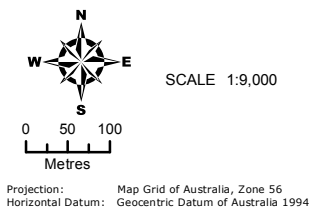
2014/15 Dredging Campaign

PRODUCED BY:	DRAINAGE WATERWAYS & COASTAL PLANNING
UNIT LOCATION:	Pine Rivers District Office, Stathpine QLD
COMPILED BY:	freyjachyer
DATE PRODUCED:	24/08/2016

 Dredge Zones
 13/14 Campaign



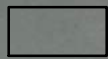
Copyright Moreton Bay Regional Council and Department of Environment and Resource Management
 Moreton Bay Regional Council supplies this map under the following conditions:- Mapping details are supplied from information contained in the Council's records which may have been furnished to the Council by other persons. Moreton Bay Regional Council gives no warranty or guarantee of any kind, expressed, implied, or statutory, to the correctness or accuracy of the map details or the degree of compliance with any Council standards in this matter. Persons making decisions with financial or legal implications must not rely upon the map details shown on this plan for the purpose of determining whether any particular facts or circumstances exist and the Moreton Bay Regional Council (and its officers and agents) expressly disclaims responsibility for any loss or damage suffered as a result of placing reliance upon this information. In order to determine the zoning of any parcel of land, a Town Planning Certificate should be obtained or the Planning Scheme perused.
 DCDB is reproduced with the permission of the State of Queensland (Department of Environment and Resource Management)




 Moreton Bay Regional Council
 PO Box 159
 Caboolture QLD 4500
 Ph: (07) 3205 0555
 Fax: (07) 3480 6710
 Email: gis@moretonbay.qld.gov.au
 Web: www.moretonbay.qld.gov.au

NEWPORT WATERS 2013/14 Dredging Campaign

PRODUCED BY:	DRAINAGE WATERWAYS & COASTAL PLANNING
UNIT LOCATION:	Pine Rivers District Office, Stathpine QLD
COMPILED BY:	freyjacher
DATE PRODUCED:	24/08/2016



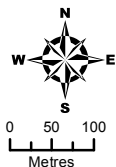
Dredge Zones



2011/12 Dredged Areas



Copyright Moreton Bay Regional Council and Department of Environment and Resource Management
Moreton Bay Regional Council supplies this map under the following conditions:- Mapping details are supplied from information contained in the Council's records which may have been furnished to the Council by other persons. Moreton Bay Regional Council gives no warranty or guarantee of any kind, expressed, implied, or statutory, to the correctness or accuracy of the map details or the degree of compliance with any Council standards in this matter. Persons making decisions with financial or legal implications must not rely upon the map details shown on this plan for the purpose of determining whether any particular facts or circumstances exist and the Moreton Bay Regional Council (and its officers and agents) expressly disclaims responsibility for any loss or damage suffered as a result of placing reliance upon this information. In order to determine the zoning of any parcel of land, a Town Planning Certificate should be obtained or the Planning Scheme perused.
DCDB is reproduced with the permission of the State of Queensland (Department of Environment and Resource Management)



SCALE 1:9,000

Projection: Map Grid of Australia, Zone 56
Horizontal Datum: Geocentric Datum of Australia 1994



Moreton Bay Regional Council
PO Box 159
Caboolture QLD 4500
Ph: (07) 3205 0555
Fax: (07) 3480 6710
Email: gis@moretonbay.qld.gov.au
Web: www.moretonbay.qld.gov.au

NEWPORT WATERS
2011/12 Dredging Campaign

PRODUCED BY: DRAINAGE WATERWAYS & COASTAL PLANNING
UNIT LOCATION: Pine Rivers District Office, Stathpine QLD
COMPILED BY: freyjachyer
DATE PRODUCED: 24/08/2016