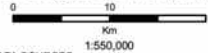


## **APPENDIX I: AREAS OF COASTAL BIODIVERSITY SIGNIFICANCE (TERRESTRIAL)**

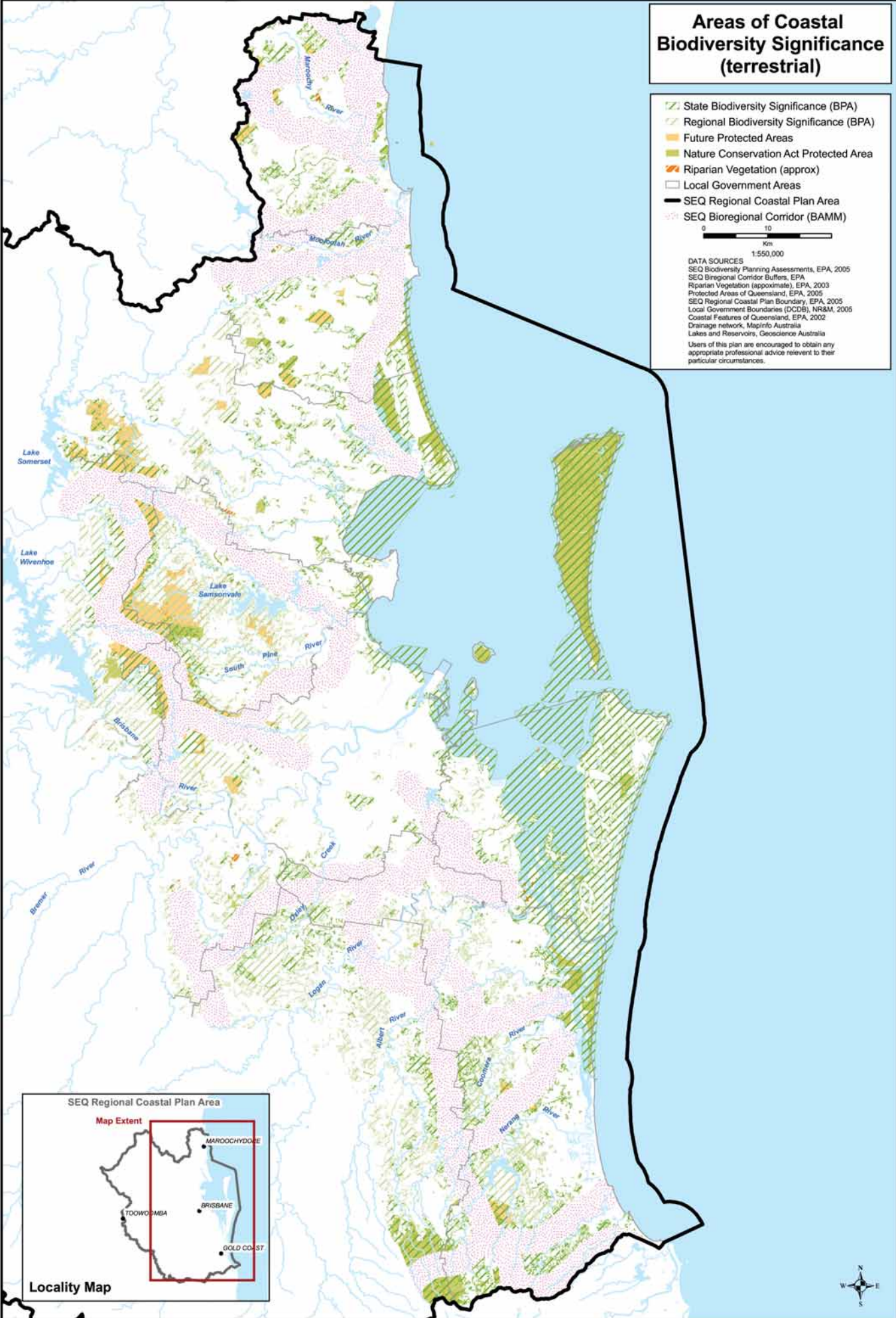
# Areas of Coastal Biodiversity Significance (terrestrial)

-  State Biodiversity Significance (BPA)
-  Regional Biodiversity Significance (BPA)
-  Future Protected Areas
-  Nature Conservation Act Protected Area
-  Riparian Vegetation (approx)
-  Local Government Areas
-  SEQ Regional Coastal Plan Area
-  SEQ Bioregional Corridor (BAMM)



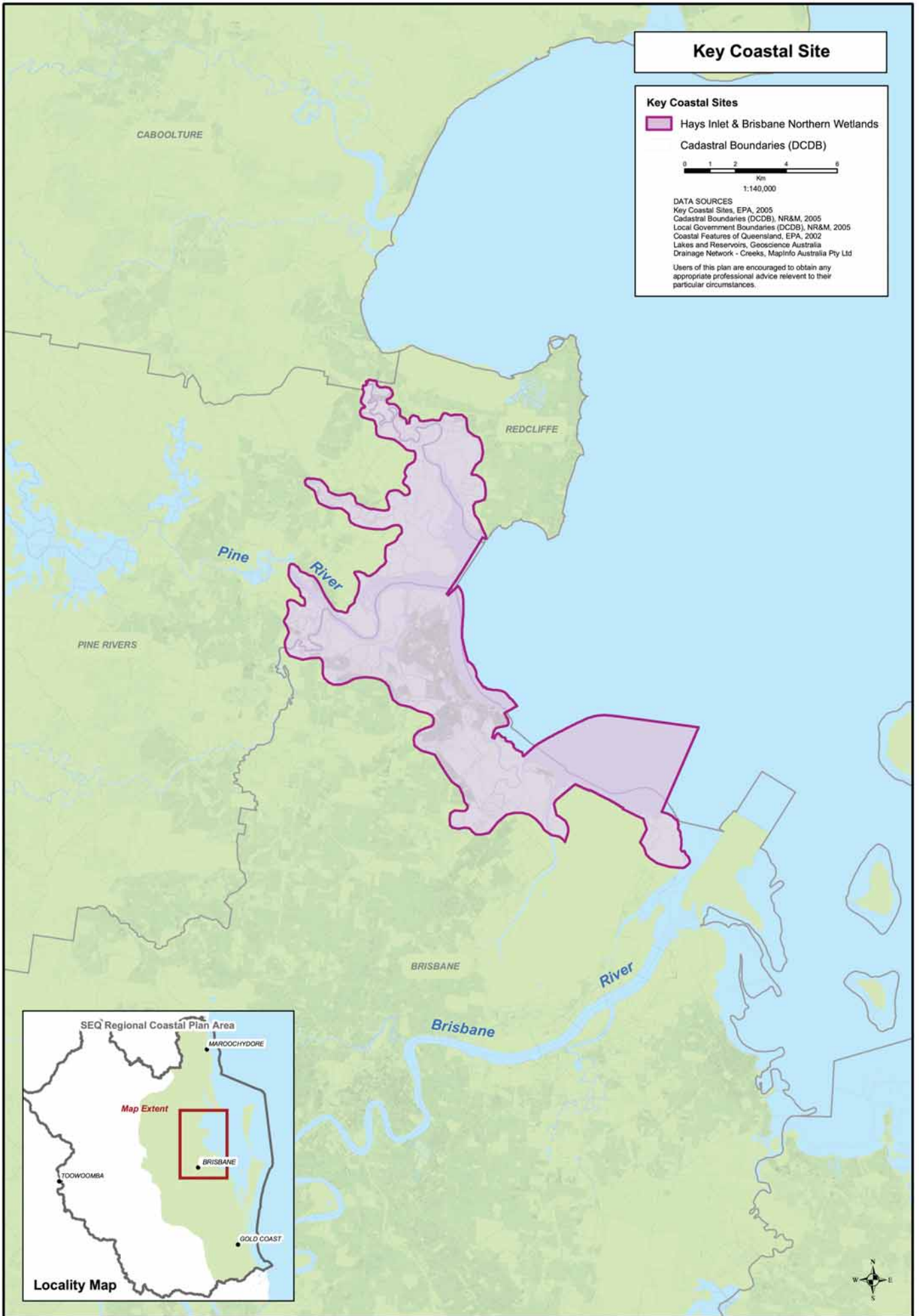
1:550,000

**DATA SOURCES**  
 SEQ Biodiversity Planning Assessments, EPA, 2005  
 SEQ Bioregional Corridor Buffers, EPA  
 Riparian Vegetation (approximate), EPA, 2003  
 Protected Areas of Queensland, EPA, 2005  
 SEQ Regional Coastal Plan Boundary, EPA, 2005  
 Local Government Boundaries (LGA), NRAM, 2005  
 Coastal Features of Queensland, EPA, 2002  
 Drainage network, MapInfo Australia  
 Lakes and Reservoirs, Geoscience Australia  
 Users of this plan are encouraged to obtain any appropriate professional advice relevant to their particular circumstances.



Map 1  
 Biodiversity  
 South-east Queensland Regional Coastal Plan

## APPENDIX J: KEY COASTAL SITE



Map 11  
 Key Coastal Site  
 South-east Queensland Regional Coastal Plan

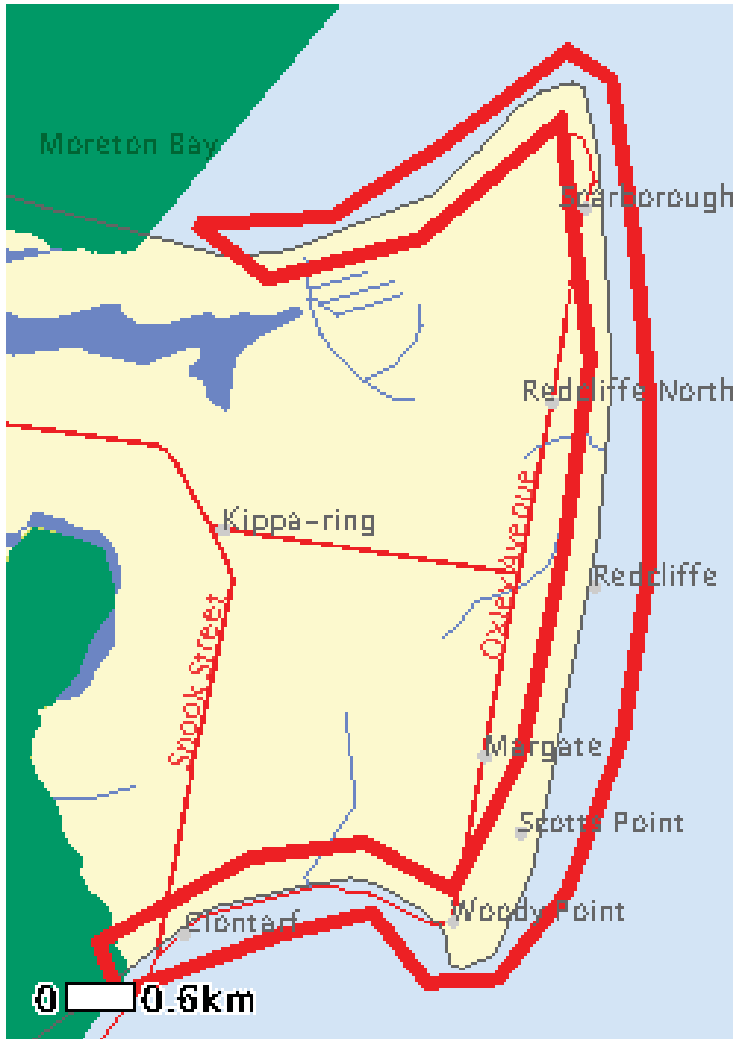


# APPENDIX K: EPBC ACT PROTECTED MATTERS REPORT

Source: [www.environment.gov.au/epbc](http://www.environment.gov.au/epbc)



EPBC Act Map:

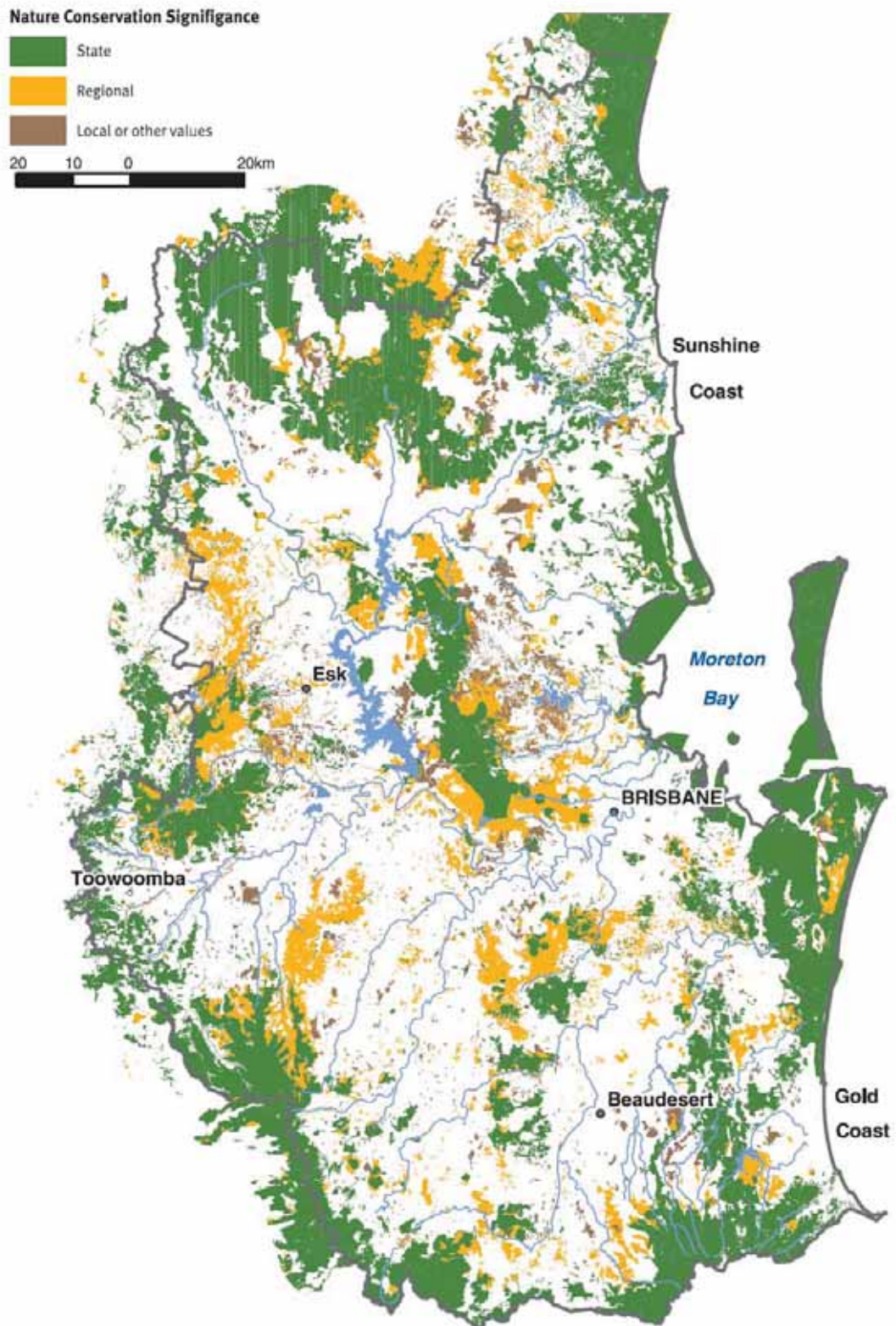


Coordinates:

(-27.20157,153.08343), (-27.20097,153.09429), (-27.19493,153.10364), (-27.18739,153.11360),  
 (-27.18980,153.11722), (-27.20247,153.11903), (-27.21575,153.12024), (-27.22963,153.12024),  
 (-27.24350,153.11812), (-27.25618,153.11360), (-27.26342,153.10787), (-27.26372,153.10213),  
 (-27.25799,153.09761), (-27.25980,153.09007), (-27.26462,153.07679), (-27.26040,153.07528),  
 (-27.25346,153.08765), (-27.25225,153.09701), (-27.25618,153.10425), (-27.24532,153.10968),  
 (-27.22812,153.11330), (-27.21273,153.11541), (-27.19312,153.11300), (-27.20278,153.10153),  
 (-27.20609,153.08916), (-27.2015,153.08313)

---

## **APPENDIX L: AREAS OF STATE AND REGIONAL BIODIVERSITY SIGNIFICANCE**



Source: *Regional Nature Conservation Strategy for South East Queensland 2003-2008*