



# WorleyParsons

resources & energy

EcoNomics<sup>™</sup>

MORETON BAY REGIONAL COUNCIL

REGIONAL FLOODPLAIN DATABASE

HYDROLOGIC AND HYDRAULIC MODELLING REPORT: MARY RIVER (MAR)

---

## APPENDIX A: INFRASTRUCTURE DATA ASSESSMENT REPORT

## COPYRIGHT NOTICE



This document, Hydrologic and Hydraulic Modelling - Mary River (MAR), is licensed under the [Creative Commons Attribution 4.0 Licence](https://creativecommons.org/licenses/by/4.0/), unless otherwise indicated.

**Please give attribution to:** © Moreton Bay Regional Council 2016

We also request that you observe and retain any notices that may accompany this material as part of the attribution.

### **Notice Identifying Other Material and/or Rights in this Publication:**

The author of this document has taken steps to both identify third-party material and secure permission for its reproduction and reuse. However, please note that where these materials are not licensed under a Creative Commons licence or similar terms of use, you should obtain permission from the rights holder to reuse their material beyond the ways you are permitted to use them under the [Copyright Act 1968](https://www.copyright.gov/1968/). Where third party material is used, this has been identified within the document. Please also see the Table of References.

### **Further Information**

For further information about the copyright in this document, please contact:

Moreton Bay Regional Council

PO Box 159

CABOOLTURE QLD 4510

Email: [mbrc@moretonbay.qld.gov.au](mailto:mbrc@moretonbay.qld.gov.au)

Phone: (07) 3205 0555

## DISCLAIMER

The [Creative Commons Attribution 4.0 Licence](https://creativecommons.org/licenses/by/4.0/) contains a Disclaimer of Warranties and Limitation of Liability. In addition: **This flood study and its associated models and data were produced by Worley Parsons for Moreton Bay Regional Council only. The views expressed in the study are those of the author(s) alone, and do not necessarily represent the views of the Moreton Bay Regional Council. Reuse of this study or its associated data by anyone for any other purpose could result in error and/or loss. You should obtain professional advice before making decisions based upon the contents of this document.**



**WorleyParsons**

resources & energy

**Eco**Nomics™

**MORETON BAY REGIONAL COUNCIL**

# **Infrastructure Data Assessment Report**

## **Package 5**

301001-01156 – EN-REP-0002

14 October 2010

**Infrastructure & Environment**

Unit 5, Primary Central,  
63 Primary School Court, Maroochydore P.O. Box 1757 Sunshine Plaza QLD 4558  
Australia  
Telephone: +61 7 5475 6400  
Facsimile: +61 7 5475 6499  
[www.worleyparsons.com](http://www.worleyparsons.com)  
ABN 61 001 279 812



**MORETON BAY REGIONAL COUNCIL  
INFRASTRUCTURE DATA ASSESSMENT REPORT  
PACKAGE 5**

---

## Disclaimer

*This report has been prepared on behalf of and for the exclusive use of Moreton Bay Regional Council, and is subject to and issued in accordance with the agreement between Moreton Bay Regional Council and WorleyParsons. WorleyParsons accepts no liability or responsibility whatsoever for it in respect of any use of or reliance upon this report by any third party.*

---

### PROJECT 301001-01156 - INFRASTRUCTURE DATA ASSESSMENT REPORT

---

REV	DESCRIPTION	ORIG	REVIEW	WORLEY- PARSONS APPROVAL	DATE	CLIENT APPROVAL	DATE
A	Issued for Internal Review	R.Stewart	K.Hegerty		12-Oct-10	N/A	
0	For Issue	R.Stewart	K.Hegerty	E.Reid	14-Oct-10		



**MORETON BAY REGIONAL COUNCIL  
INFRASTRUCTURE DATA ASSESSMENT REPORT  
PACKAGE 5**

---

## CONTENTS

1.	INTRODUCTION .....	1
2.	AVAILABLE DATA AND GAP ANALYSIS .....	2
2.1	Bridges .....	2
2.2	Culverts .....	2
2.3	Trunk Underground Drainage .....	2
2.4	Detention Basins / Farm Dams .....	3
2.5	Terrain .....	3
2.5.1	Byron Creek .....	4
2.5.2	Mary River .....	4
2.5.3	Neurum Creek .....	5
2.5.4	Stanley River .....	6
2.6	Miscellaneous .....	6
3.	PROPOSED DATA CAPTURE .....	8
3.1	Prioritisation Methodology .....	8
3.2	Data Prioritisation .....	9
4.	RECOMMENDATIONS .....	12
5.	REFERENCES .....	13
APPENDIX 1 - DATA REVIEW FIGURES		
APPENDIX 2 - STANLEY RIVER 2003 MIKE 11 MODEL LAYOUT		



**MORETON BAY REGIONAL COUNCIL  
INFRASTRUCTURE DATA ASSESSMENT REPORT  
PACKAGE 5**

---

## **1. INTRODUCTION**

WorleyParsons Services Pty Ltd has been engaged by Moreton Bay Regional Council (MBRC) to carry out detailed surface water modelling over four of the regional catchments in their Local Government Area (LGA). The four catchments are Stanley River (STA), Neurum Creek (NEU), Mary River (MAR) and Byron Creek (BYR). These make up 'Package 5' of MBRC's Regional Floodplain Database Project (RFD Project) and are referred to as 'minor basins' in the GIS data provided by MBRC.

At the commencement of this project MBRC handed over an extensive data set including established 'broad scale' models and results. The purpose of this report is to identify and prioritise any additional floodplain infrastructure data which is necessary to complete the detailed modelling associated with the current project.

Due to the expansive catchment study areas of the project, it is difficult to convey the necessary level of data detail on Figures. For this reason an electronic copy of the GIS data associated with the findings of this report has been provided. The following electronic GIS data layers have been provided with this report:

1. "Existing Structure Junctions" (provided by MBRC). A data capture priority rating has been assigned to each of these structures;
2. "Identified Hydraulic Structures". This includes all additional structures identified by WorleyParsons including an associated data capture priority rating;
3. "Identified Basins/Dams". This includes all detention basins and dams significant enough to warrant incorporating into the modelling;
4. "Additional Buildings Identified in Floodplain". Includes buildings in the PMF flood extent that are not already included in MBRC's "buildings" GIS layer.
5. "Miscellaneous Comments". Includes general comments relating data capture and modelling.

Figures provided with this report are for overview purposes only.

A fee proposal for WorleyParsons to carry out the data capture tasks identified in this report will be provided separately to MBRC for consideration.



**MORETON BAY REGIONAL COUNCIL  
INFRASTRUCTURE DATA ASSESSMENT REPORT  
PACKAGE 5**

---

## **2. AVAILABLE DATA AND GAP ANALYSIS**

Floodplain Infrastructure Data provided by MBRC has been reviewed. Details of the available data and a gap analysis are provided below for each class of infrastructure data.

### **2.1 Bridges**

Bridge design drawings have been supplied by MBRC for 11 locations within the Package 5 study area. These will be useful for defining geometry of the bridge however it is noted that generally these drawings do not have elevation data on AHD.

In addition to these bridges numerous road crossings have also been identified within the proposed hydraulic modelling area using aerial imagery, digital elevation modes (DEMs), and the supplied hydrography. Identifying road crossings in this manner makes it difficult to distinguish between culverts and bridges. Consequently, when reviewing the catchment data to identify additional waterway crossings we have not distinguished between bridges and culverts.

Each waterway crossing has been assigned a priority rating of A, B or C. This is discussed further in Section 3.1.

No bridge data is currently available in a TUFLOW compatible format.

### **2.2 Culverts**

No culvert details have been provided for any of the Package 5 catchments.

Potential culvert crossings within the proposed hydraulic modelling area have been identified in the same manner as for bridge crossings, as discussed in the previous section. The location of these structures is shown generally on the figure provided in Appendix 1 and they are also included in the electronic GIS data provided with this report.

It is also noted that the location of some culverts may only become apparent with a field inspection. This is likely to be the case for high level floodplain crossings which do not tie in directly with a defined waterway.

### **2.3 Trunk Underground Drainage**

A review of the supplied aerial imagery over the proposed hydraulic modelling area has found no evidence of underground trunk drainage. This is to be expected in these rural package 5 catchments.



**MORETON BAY REGIONAL COUNCIL  
INFRASTRUCTURE DATA ASSESSMENT REPORT  
PACKAGE 5**

---

## **2.4 Detention Basins / Farm Dams**

No regional scale detention basins have been identified in any of the package 5 basins. There are numerous farm dams that are large enough to warrant incorporation into the modelling. The location of these dams are shown generally on the Appendix figures and they are also included in the electronic GIS data provided with this report.

## **2.5 Terrain**

### ***Bathymetry***

For the purpose of this report bathymetry is defined as ground elevation level data in areas beneath standing water.

No bathymetry data has been provided for any of the package 5 catchments however some localised sources of bathymetric data have been identified. These are discussed under the respective catchment headings below.

### ***Topography***

The topographic data sources which have been provided for use in this study include:

1. 2009 Aerial LiDAR survey. This has been provided as raw xyz data points and also as a 2.5m grid digital elevation model (DEM)
2. A 25m grid DEM has also been supplied by MBRC. It is understood that this is based on the 25m grid that is available through DERM.

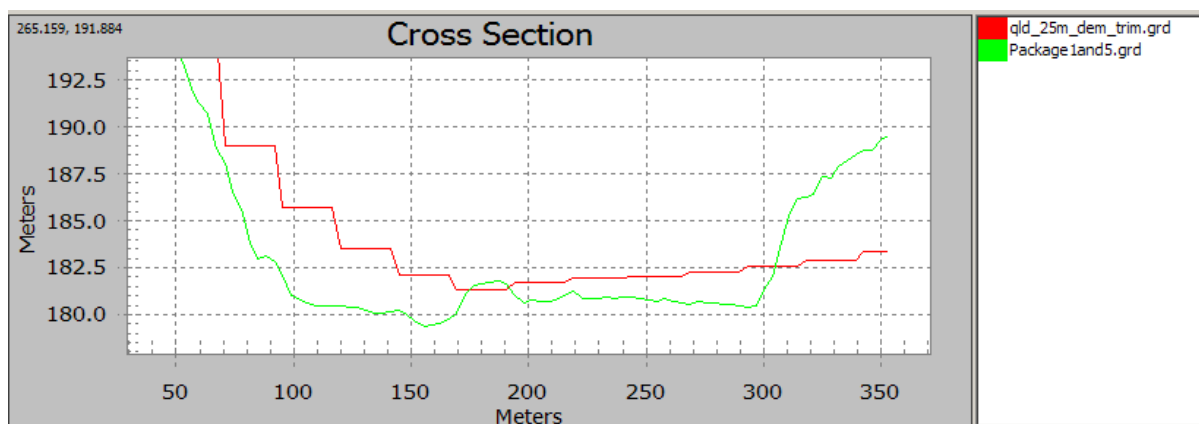
The LiDAR survey has been filtered for ground elevation points and is considered to be of high quality and suitable for use in this study. Unfortunately the LiDAR does not provide complete coverage over each of the package 5 catchments. The LiDAR coverage area over each minor basin is shown in the respective catchment heading below.

Modelling outside of the LiDAR coverage areas is expected to be based on the 25m DEM. The accuracy of hydraulic modelling based on the 25m DEM is likely to be subject to errors resulting from inaccuracies in elevations in the DEM. The two grids have been compared and significant elevation differences have been found to be common. A typical floodplain section extracted from each of the grids is shown in the Figure below.





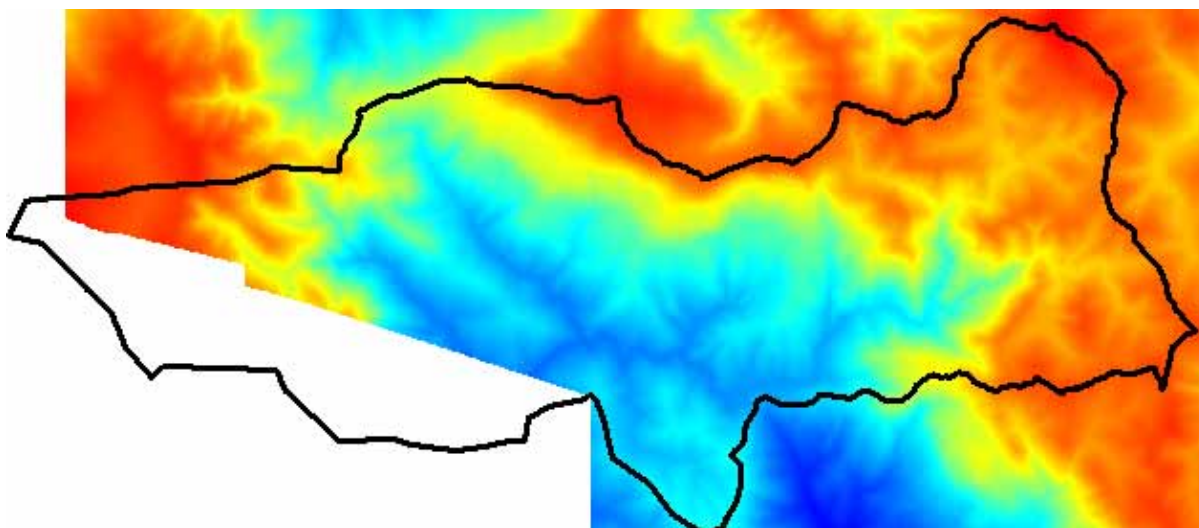
MORETON BAY REGIONAL COUNCIL  
INFRASTRUCTURE DATA ASSESSMENT REPORT  
PACKAGE 5



**Figure 2.1 – Typical Floodplain Section: 2.5m DEM (Green) vs 25m DEM (Red)**

## 2.5.1 Byron Creek

The coverage of the aerial LiDAR survey over the Byron Creek catchment is shown by the extent of the DEM in the figure below. No LiDAR is available in the south-west corner of the BYR catchment. The accuracy of modelling beyond the LiDAR extents will be significantly limited by the lack of good quality terrain data in this area.



**Figure 2.2 – Byron Creek 'Minor Basin' Overlaying LiDAR DEM.**

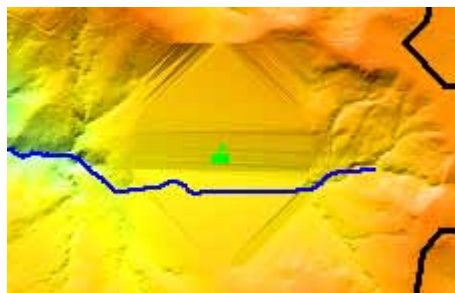
## 2.5.2 Mary River

The LiDAR aerial survey covers the full extent of the Mary River 'Minor Basin'. It is noted however that an anomaly has been discovered in the supplied 2.5m DEM which appears to have been caused by a tile of data being excluded during the DEM creation. The anomaly, which is illustrated below, is located near MGAz56 coordinate 478,670, 7,035,579.



MORETON BAY REGIONAL COUNCIL  
INFRASTRUCTURE DATA ASSESSMENT REPORT  
PACKAGE 5

---

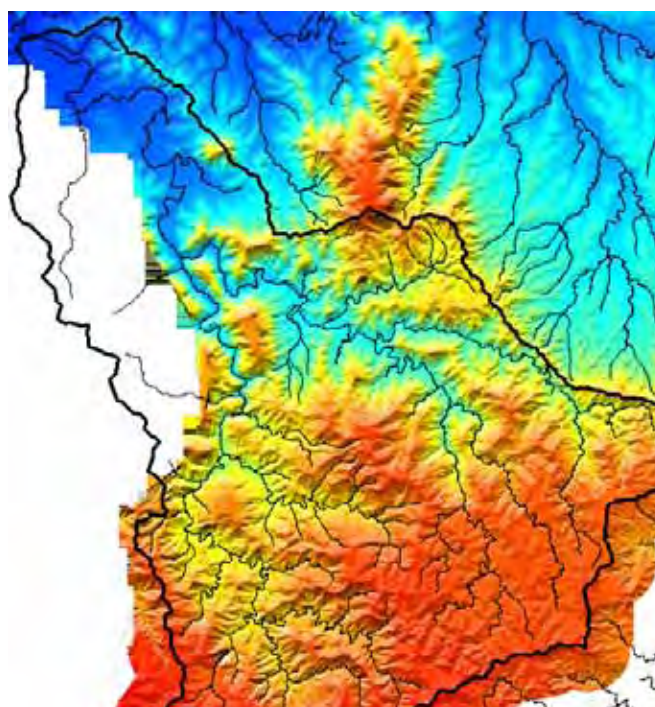


**Figure 2.3 – 2.5m DEM anomaly in the MAR minor basin**

This anomaly is included in the general comments GIS data layer provided with this report. Fortunately it is situated high enough in the catchment that hydraulic modelling will not be effected.

### 2.5.3 Neurum Creek

The coverage of the aerial LiDAR survey over the Neurum Creek catchment is shown by the extent of the DEM in the figure below. No LiDAR is available in the north-west corner of the NEU basin. The accuracy of modelling beyond the LiDAR extents will be significantly limited by the lack of good quality terrain data in this area.



**Figure 2.4 – Neurum Creek 'Minor Basin' Overlaying LiDAR DEM.**

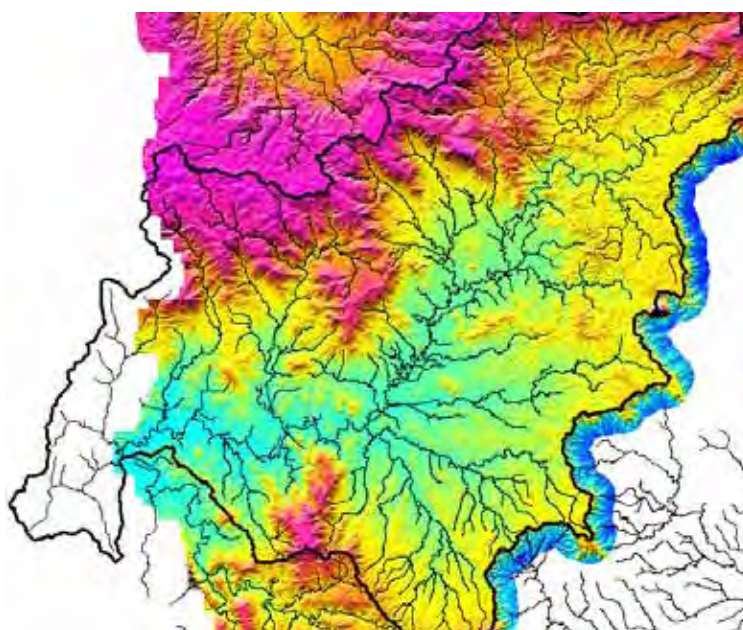


MORETON BAY REGIONAL COUNCIL  
INFRASTRUCTURE DATA ASSESSMENT REPORT  
PACKAGE 5

---

## 2.5.4 Stanley River

The coverage of the aerial LiDAR survey over the Stanley River catchment is shown by the extent of the *DEM* in the figure below. No LiDAR is available for the western, downstream portion of the Stanley River minor basin. The accuracy of modelling beyond the LiDAR extents will be significantly limited by the lack of good quality terrain data in this area.



**Figure 2.5 – Stanley River ‘Minor Basin’ Overlaying LiDAR DEM.**

Cross-section ground survey was carried out during the 2003 Stanley River Flood Study (Sargent Consulting). This ground survey could be utilised to confirm the accuracy of the LiDAR data and also possibly to model the lower reaches of the Stanley River where LiDAR is not available. The cross-section survey data has not yet been supplied. The cross section survey is also a possible source of bathymetry.

The locations of the Stanley River Flood Study cross sections are shown in Appendix 2.

## 2.6 Miscellaneous

It is noted that some floodplain infrastructure is difficult to identify by studying aerial imagery and a *DEM*. One such example is in-stream weirs. No in-stream weirs were identified however it is worth confirming with the relevant authority as to whether any exist in these catchments.



**MORETON BAY REGIONAL COUNCIL  
INFRASTRUCTURE DATA ASSESSMENT REPORT  
PACKAGE 5**

---

Some buildings have also been identified in the floodplain that are not included in the MBRC supplied 'buildings' land-use layer. These additional buildings are also supplied in this report's GIS data layers.



**MORETON BAY REGIONAL COUNCIL  
INFRASTRUCTURE DATA ASSESSMENT REPORT  
PACKAGE 5**

---

### **3. PROPOSED DATA CAPTURE**

The key additional data capture required for this project is survey of the numerous hydraulic structures including bridges and culverts.

No regional scale detention basins or trunk drainage works were identified and hence no data capture is required for these structure classes.

The majority of the catchment area for each of the minor basins has been captured with high quality LiDAR survey. It would be ideal to obtain additional LiDAR survey over the remaining areas however MBRC may decide to accept a lower level of modelling accuracy in these areas to avoid the large cost of capturing this data.

Data capture tasks have been assigned a priority rating. Details are provided in the following sections.

#### **3.1 Prioritisation Methodology**

##### ***Hydraulic Structure Overall Priority***

Each identified road crossing has been assigned a high, medium or low data capture priority. Prioritisation of the hydraulic structures has been based on the following criteria:

1. Likely impact on flooding characteristics;
2. Proximity to urban areas;
3. Class of road associated with the infrastructure; and
4. Catchment Size.

Based on these criteria each hydraulic structure that has been identified has been assigned a priority class or A (high), B (medium), or C (low). The priority has been assigned by reviewing aerial imagery, DEMS and the supplied hydrography.

By way of example, a dirt road with a minor causeway crossing and no significant road embankment would be assigned a 'C' priority. A significant road crossing in an urban area or on a major road would be assigned an 'A' priority. An example of a 'B' priority structure is a rural road crossing with no surrounding residential properties.

The priority rating of each structure is provided in the GIS data provided with this report ('priority' field).

##### ***Priority of Hydraulic Structure Elements***

In addition to assigning each structure a priority, a further breakdown in priority has also been assigned to the various elements of data capture associated with each hydraulic structure. This



**MORETON BAY REGIONAL COUNCIL  
INFRASTRUCTURE DATA ASSESSMENT REPORT  
PACKAGE 5**

---

relates to the priority High (or A) and Low (or B) data capture tasks referenced in the project brief whereby priority High tasks are considered critical for a high quality modelling outcome and priority Low tasks could potentially be incorporated with desktop techniques and assumptions.

## **3.2 Data Prioritisation**

### ***Culverts***

Each structure has been assigned an overall priority as discussed in Section 3.1. The priority for each structure is provided in the GIS data provided with this report.

In addition to this, each element of data associated with capture of structures can further be prioritised as follows:

#### ***Priority High Elements of Culvert Data Capture***

Capture of these elements is considered critical to a high quality modelling outcome:

1. Culvert Type (Box / Pipe);
2. Size and number of barrels;
3. Upstream and downstream invert levels;
4. Material (concrete/corrugated iron); and
5. Handrail type and extents.

#### ***Priority Low Elements of Culvert Data Capture:***

The remaining elements associated with culvert data capture as detailed in the Culvert Data Standard by Aurecon, are considered to have type B Priority and could be incorporated into the modelling using desktop techniques and assumptions. These elements include

1. Wing walls;
2. Road elevation;
3. Handrail elevation;
4. Geo-referenced photos; and
5. Metadata.

### ***Bridges***

Each structure has been assigned an overall priority as discussed in Section 3.1.





**MORETON BAY REGIONAL COUNCIL  
INFRASTRUCTURE DATA ASSESSMENT REPORT  
PACKAGE 5**

---

In addition to this, each element of data associated with capture of structures can further be prioritised as follows:

*Priority A Elements of Bridge Data Capture*

1. Number / Length of spans;
2. Deck Thickness or soffit level;
3. Pier Configuration (width, shape, orientation etc);
4. Cross section of channel beneath the bridge; and
5. Handrail type and extents.

*Priority B Elements of Bridge Data Capture:*

The remaining elements associated with bridge data capture as detailed in the Bridge Data Standard by Aurecon, are considered to have type B Priority and could be incorporated into the modelling using desktop techniques and assumptions. These elements include

1. Road elevation;
2. Handrail elevation;
3. Deck levels points;
4. Geo-referenced photos; and
5. Metadata.

Most bridge details are able to be sourced from the supplied bridge drawings however levels on the drawings will need to be converted to AHD and it is noted that not all bridge drawings are complete.

***Farm Dams***

*Priority B*

It is proposed that the minor farm dams situated in the upper catchments upstream of the proposed hydraulic modelling extent will not be incorporated into the hydrologic or hydraulic modelling. While these small dams may have some impact on catchment hydrology (dependant on the level at the start of a rainfall event), the amount of work required to incorporate these dams into the modelling is not considered justified given that the impact of these dams is likely to be negligible if the dams are full at the start of a rainfall event.

While the farm dams in the upper catchments can justifiably be excluded from the modelling, there are several dams situated farther down in the catchments that are within the proposed hydraulic modelling area and are considered significant enough to warrant incorporation into the modelling. It is



**MORETON BAY REGIONAL COUNCIL  
INFRASTRUCTURE DATA ASSESSMENT REPORT  
PACKAGE 5**

---

anticipated that the influence of the dam embankments on local hydraulic behaviour will be more significant than the storage effect of the impounded water.

It is proposed that these dams should be incorporated into the hydraulic model as follows:

1. Incorporate significant dams into the hydraulic modelling by creating a dam crest breakline. Ideally this should be based on Ground survey however a reasonable approximation should be possible in a lot of cases using aerial LiDAR survey; and
2. Defining initial water levels for the 2d grid within in each dam. It is recommended that a reasonable and conservative approach for this is to assume that the dams are full at the start of each simulation.

## ***Terrain***

### ***Priority B: Stanley River Flood Study Survey***

It is proposed to utilise the Stanley River Flood Study survey as follows:

1. Compare with cross section ground survey with the 2009 LiDAR survey to confirm accuracy of the LiDAR
2. Utilise the in-bank survey points to supplement the definition of the channel (including bathymetry).
3. It is also worth looking into what structure survey was carried out for the investigation

While having this data would be beneficial we suggest that it is not absolutely necessary because the LiDAR aerial survey is able to provide a reasonable representation of the major water course channels. This can be assisted by the use of stream gully breaklines.

### ***Priority B: Stream Widths***

It is noted that a stream width functionality has been included in the DEM processing utility developed for this project. A stream width field can be applied to the breakline strings that will be getting developed for the project. This is also considered to be a type of 'data capture' task in that it will improve the quality of the DEMs that will be generated for the project.

## ***Miscellaneous***

### ***Priority A***

It is proposed that relevant authorities should be contacted to confirm the existence of any instream weirs within the study area. If any are reported, then location and geometric details should be attained.





**MORETON BAY REGIONAL COUNCIL  
INFRASTRUCTURE DATA ASSESSMENT REPORT  
PACKAGE 5**

---

## **4. RECOMMENDATIONS**

WorleyParsons recommends that MBRC should undertake or commission the undertaking of all data capture tasks detailed in this report. If budget and timing constraints limit the potential for this then, as a minimum, all data associated with priority "A" structures should be collected.



**MORETON BAY REGIONAL COUNCIL  
INFRASTRUCTURE DATA ASSESSMENT REPORT  
PACKAGE 5**

---

## **5. REFERENCES**

Aurecon, July 2010, "Data Standard - Culverts, Regional Floodplain Database - Stage 2, Moreton Bay Regional Council"

Aurecon, July 2010, "Data Standard - Bridges, Regional Floodplain Database - Stage 2, Moreton Bay Regional Council"

Aurecon, July 2010, "Data Standard - Detention Basins, Regional Floodplain Database - Stage 2, Moreton Bay Regional Council"

Aurecon, July 2010, "Data Standard – Trunk Underground Drainage, Regional Floodplain Database - Stage 2, Moreton Bay Regional Council"

Sargent Consulting (for the Caboolture Shire Council), March 2005, "Stanley River Flood Study Final Report"

WorleyParsons, September 2010 "Regional Floodplain Database - Floodplain Terrain"



# WorleyParsons

resources & energy

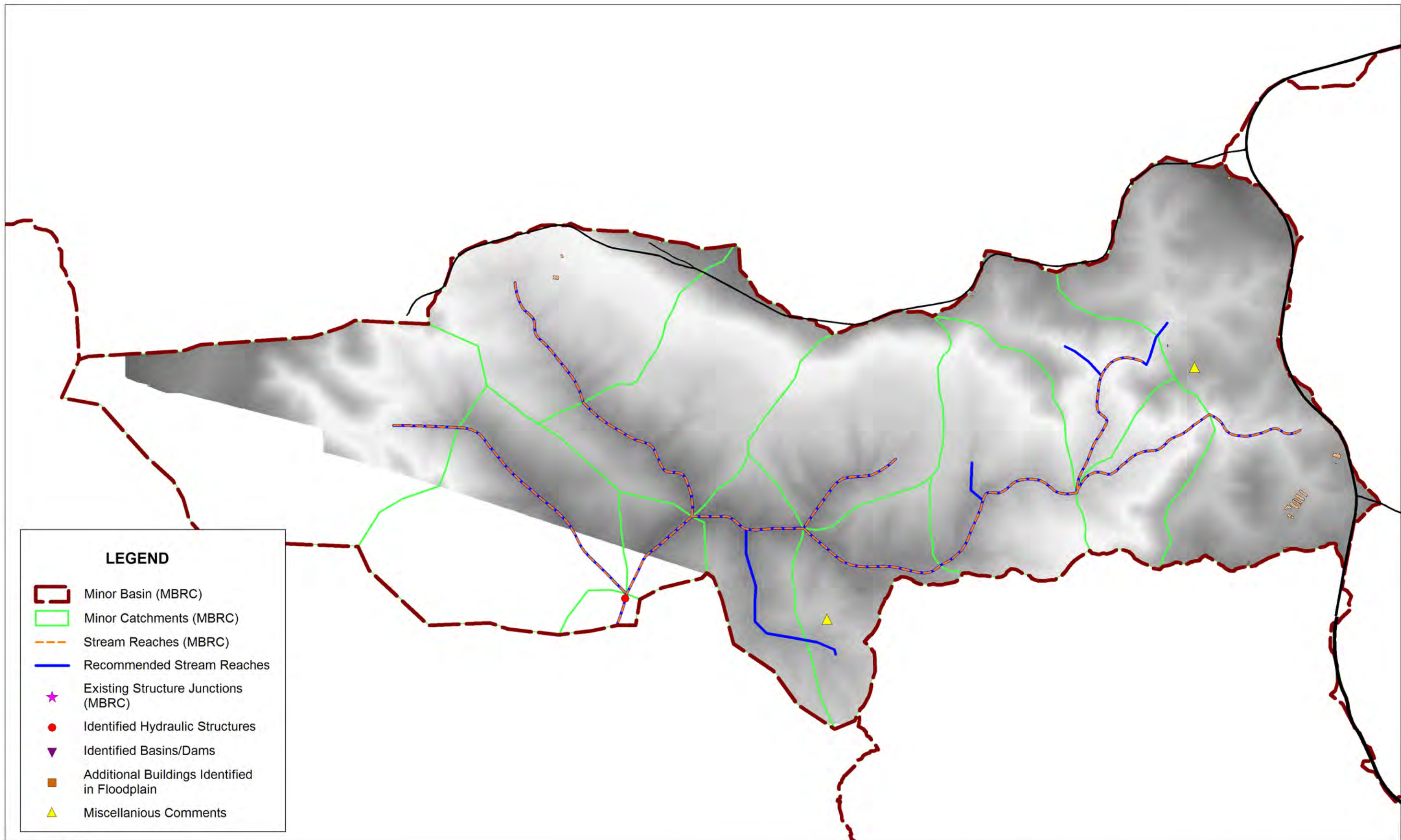
EcoNomics™

MORETON BAY REGIONAL COUNCIL  
INFRASTRUCTURE DATA ASSESSMENT REPORT  
PACKAGE 5

---

## Appendix 1 - Data Review Figures







### LEGEND

- Minor Basin (MBRC)
- Minor Catchments (MBRC)
- Stream Reaches (MBRC)
- Recommended Stream Reaches
- Existing Structure Junctions (MBRC)
- Identified Hydraulic Structures
- Identified Basins/Dams
- Additional Buildings Identified in Floodplain
- Miscellaneous Comments

All data supplied by MBRC.  
Additional\_Comments, Additional\_Hydraulic\_Structures,  
Additional\_Buildings, Additional\_DamsBasins and  
MAR\_Reach\_Mod supplied by WorleyParsons on the  
14/10/10

NOT TO SCALE

0	14/10/2010	Issued for use	RS	JM	RS	KH
Rev	Date	Revision Description	ORIG	CHK	ENG	APPD
 <b>WorleyParsons</b> resources & energy						

**MORETON BAY REGIONAL COUNCIL**

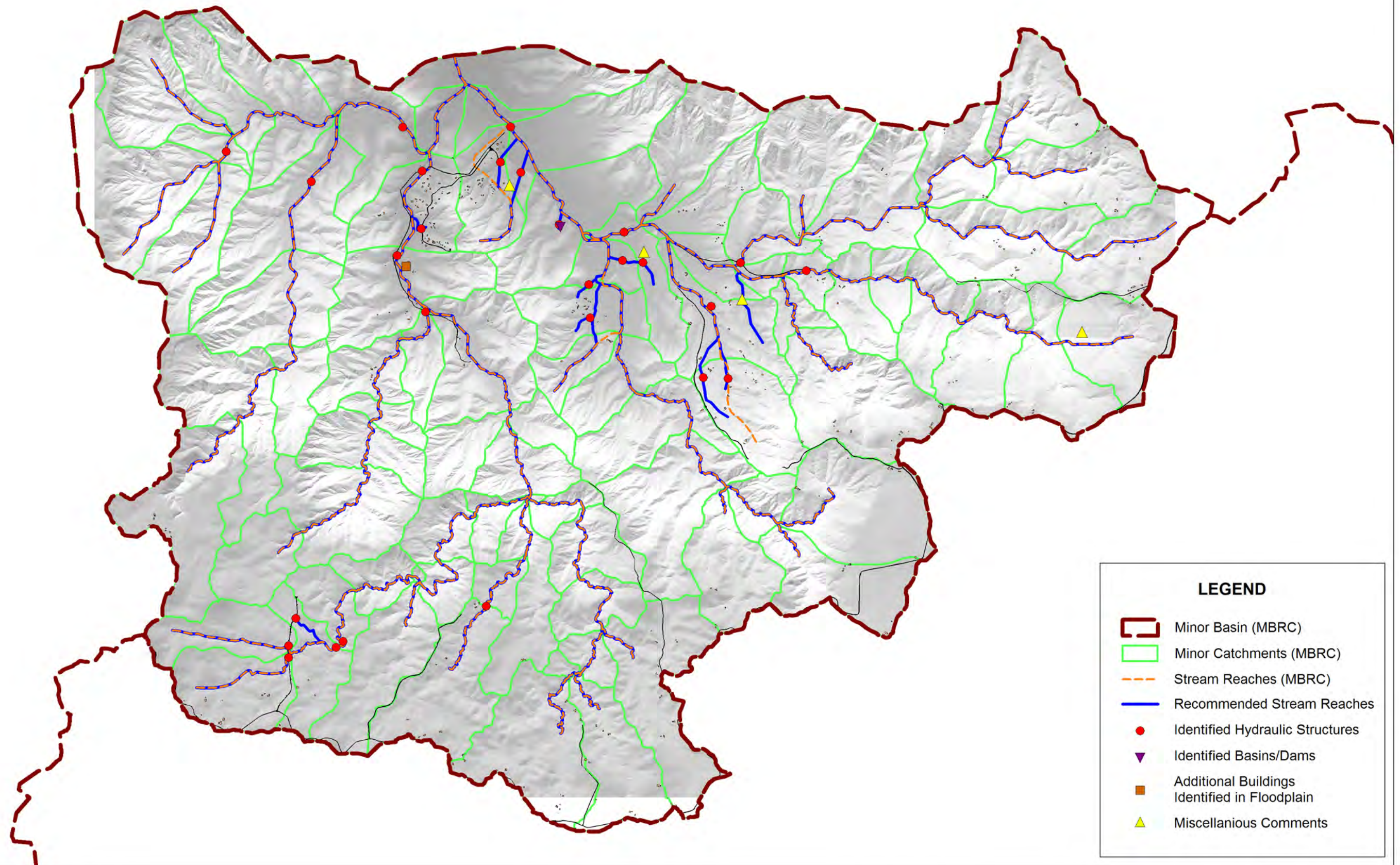
**REGIONAL FLOODPLAIN DATABASE PROJECT**

**FIGURE 1  
BYRON CREEK DATA REVIEW**

Project No: 301001-01156    Figure: 301001-01156-EN-DAL-0001    Rev: 0









**LEGEND**

- Minor Basin (MBRC)
- Minor Catchments (MBRC)
- Stream Reaches (MBRC)
- Recommended Stream Reaches
- Identified Hydraulic Structures
- Identified Basins/Dams
- Additional Buildings Identified in Floodplain
- Miscellaneous Comments

All data supplied by MBRC.  
Additional\_Comments, Additional\_Hydraulic\_Structures,  
Additional\_Buildings, Additional\_DamsBasins and  
MAR\_Reach\_Mod supplied by WorleyParsons on the  
5/10/10

NOT TO SCALE

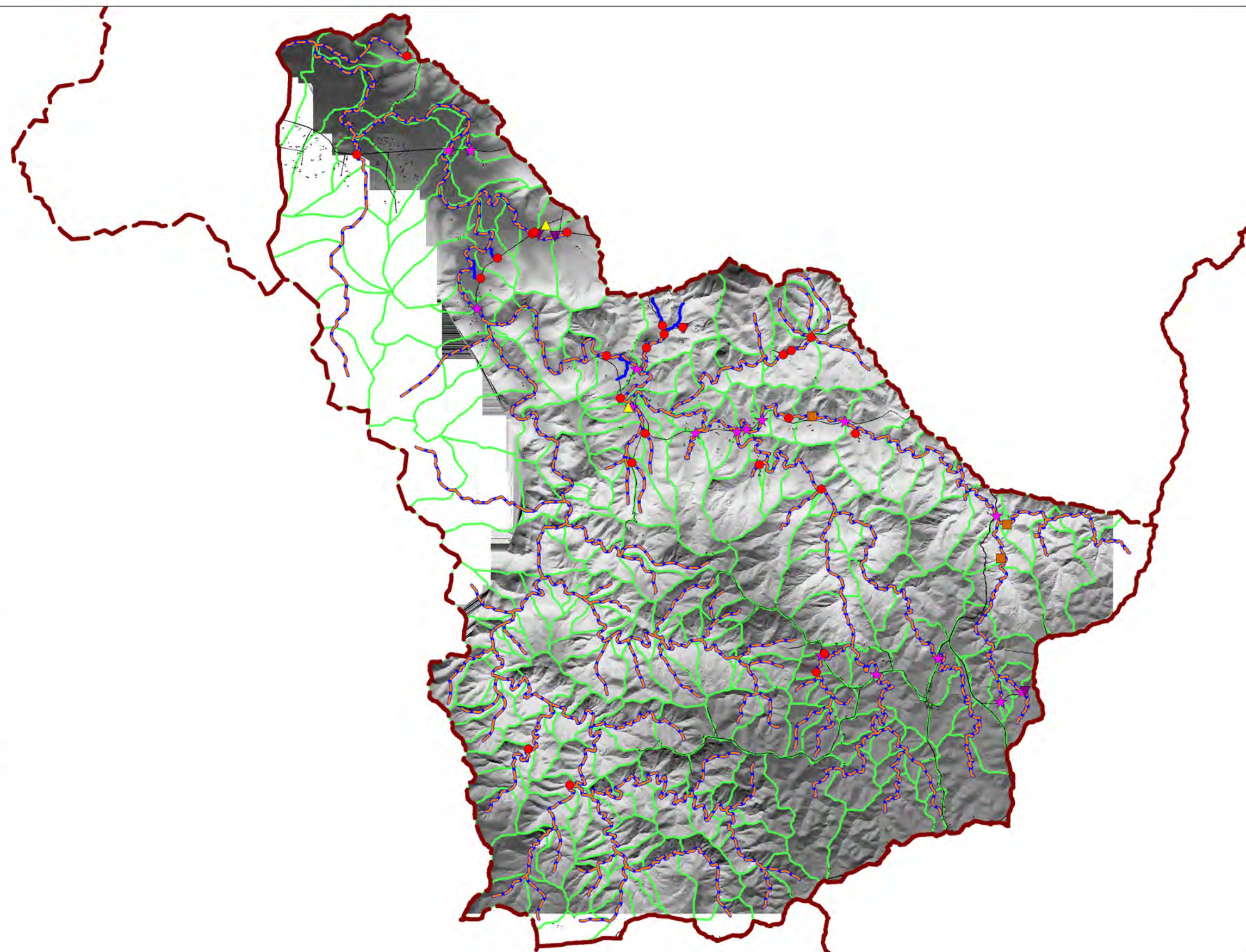
0	14/10/2010	Issued for use	JM	RS	RS	KH
Rev	Date	Revision Description	ORIG	CHK	ENG	APPD
 <b>WorleyParsons</b> resources & energy						

<b>MORETON BAY REGIONAL COUNCIL</b>		
<b>REGIONAL FLOODPLAIN DATABASE PROJECT</b>		
<b>FIGURE 2</b> <b>MARY RIVER DATA REVIEW</b>		
Project No: 301001-01156	Figure: 301001-01156-EN-DAL-0002	Rev: 0











# LEGEND

- Minor Basin (MBRC)
- Minor Catchments (MBRC)
- Stream Reaches (MBRC)
- Recommended Stream Reaches
- Existing Structure Junctions (MBRC)
- Identified Hydraulic Structures
- Identified Basins/Dams
- Additional Buildings Identified in Floodplain
- Miscellaneous Comments

All data supplied by MBRC.  
Additional\_Comments, Additional\_Hydraulic\_Structures,  
Additional\_Buildings, Additional\_DamsBasins and  
MAR\_Reach\_Mod supplied by WorleyParsons on the  
14/10/10

NOT TO SCALE

0	14/10/2010	Issued for use	RS	JM	RS	KH
Rev	Date	Revision Description	ORIG	CHK	ENG	APPD
 <b>WorleyParsons</b> resources & energy						

**MORETON BAY REGIONAL COUNCIL**

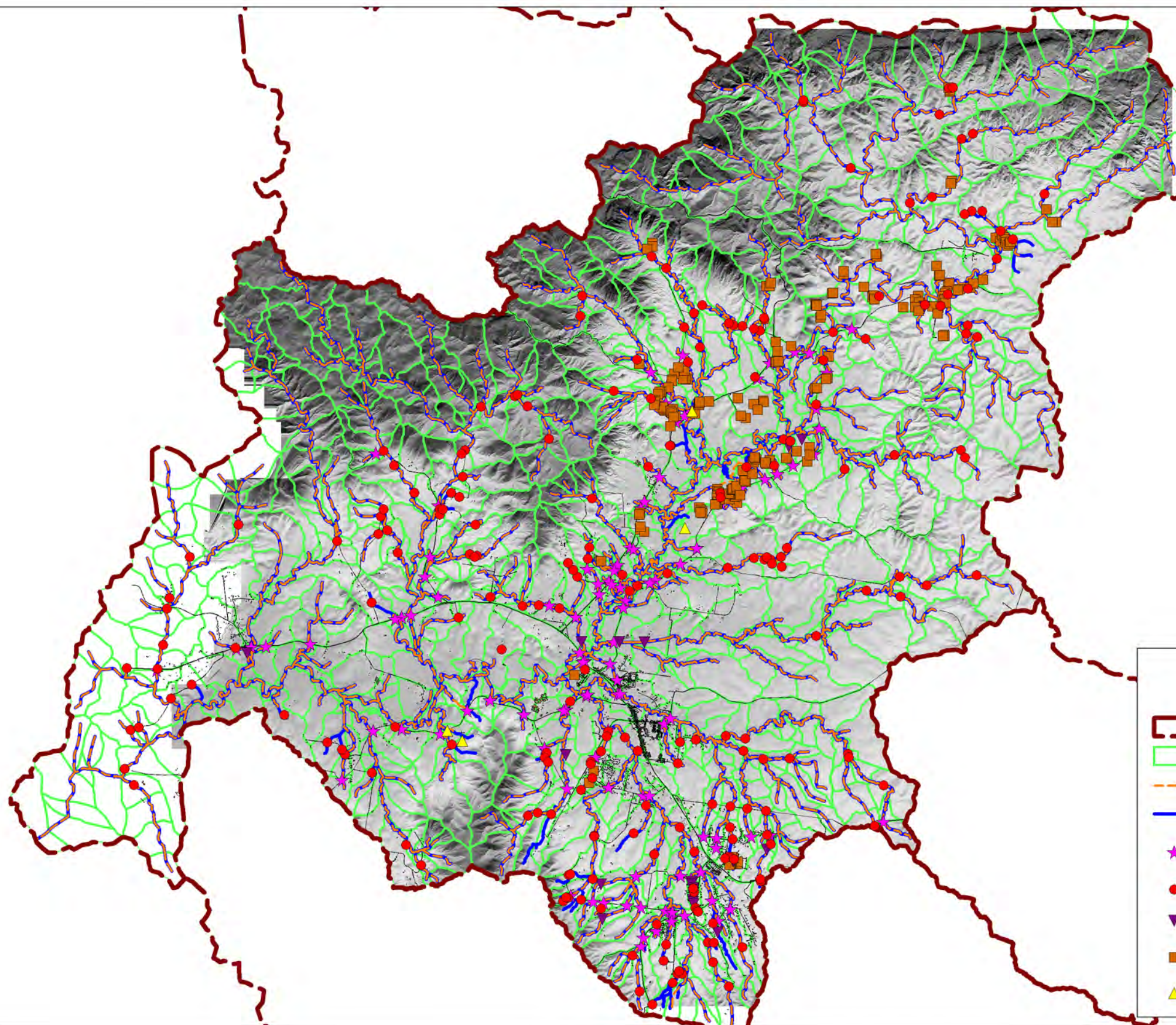
**REGIONAL FLOODPLAIN DATABASE PROJECT**

**FIGURE 3  
NEURUM CREEK DATA REVIEW**










Project No: 301001-01156    Figure: 301001-01156-EN-DAL-0003    Rev: 0









**LEGEND**

-  Minor Basin (MBRC)
-  Minor Catchments (MBRC)
-  Stream Reaches (MBRC)
-  Recommended Stream Reaches
-  Existing Structure Junctions (MBRC)
-  Identified Hydraulic Structures
-  Identified Basins/Dams
-  Additional Buildings Identified in Floodplain
-  Miscellaneous Comments

All data supplied by MBRC.  
Additional\_Comments, Additional\_Hydraulic\_Structures,  
Additional\_Buildings, Additional\_DamsBasins and  
MAR\_Reach\_Mod supplied by WorleyParsons on the  
14/10/10

NOT TO SCALE

0	14/10/2010	Issued for use	RS	JM	RS	KH
Rev	Date	Revision Description	ORIG	CHK	ENG	APPD
 <b>WorleyParsons</b> resources & energy						

<b>MORETON BAY REGIONAL COUNCIL</b>		
<b>REGIONAL FLOODPLAIN DATABASE PROJECT</b>		
<b>FIGURE 4</b> <b>STANLEY RIVER DATA REVIEW</b>		
Project No: 301001-01156	Figure: 301001-01156-EN-DAL-0004	Rev: 0







# WorleyParsons

resources & energy

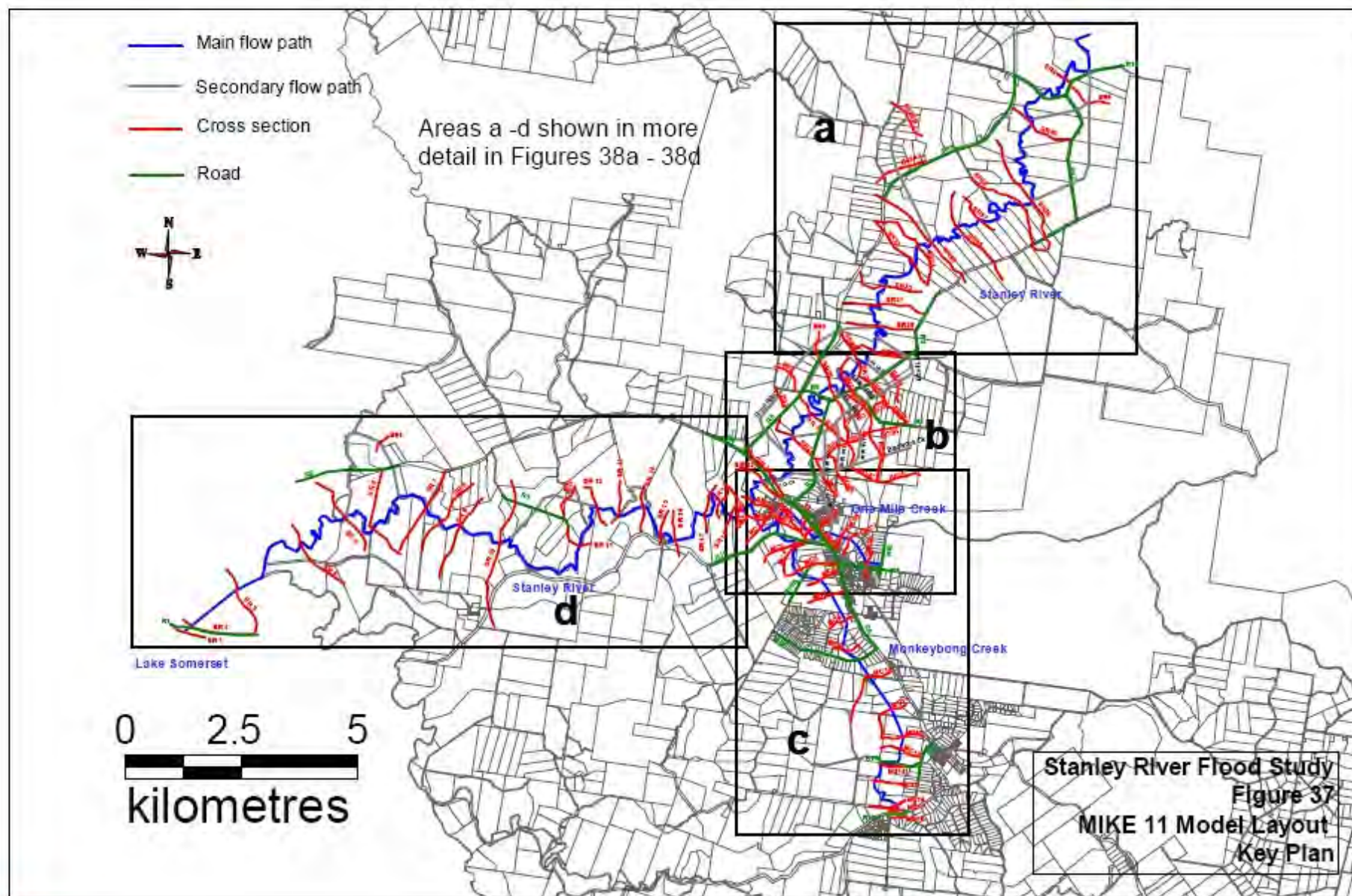
EcoNomics™

MORETON BAY REGIONAL COUNCIL  
INFRASTRUCTURE DATA ASSESSMENT REPORT  
PACKAGE 5

---

## Appendix 2 - Stanley River 2003 MIKE 11 Model Layout











# WorleyParsons

resources & energy

EcoNomics<sup>™</sup>

MORETON BAY REGIONAL COUNCIL

REGIONAL FLOODPLAIN DATABASE

HYDROLOGIC AND HYDRAULIC MODELLING REPORT: MARY RIVER (MAR)

---

## APPENDIX B: HYDROGRAPHY REVIEW REPORT





**WorleyParsons**

resources & energy

**Eco**Nomics™

**MORETON BAY REGIONAL COUNCIL**

# **Hydrography Review Report**

## **Package 5**

301001-01156 – EN-REP-0006

16 November 2010

**Infrastructure & Environment**

Unit 5, Primary Central,  
63 Primary School Court, Maroochydore P.O. Box 1757 Sunshine Plaza QLD 4558  
Australia  
Telephone: +61 7 5475 6400  
Facsimile: +61 7 5475 6499  
[www.worleyparsons.com](http://www.worleyparsons.com)  
ABN 61 001 279 812



**WorleyParsons**

resources & energy

EcoNomics

**MORETON BAY REGIONAL COUNCIL  
HYDROGRAPHY REVIEW REPORT  
PACKAGE 5**

**Disclaimer**

*This report has been prepared on behalf of and for the exclusive use of Moreton Bay Regional Council, and is subject to and issued in accordance with the agreement between Moreton Bay Regional Council and WorleyParsons. WorleyParsons accepts no liability or responsibility whatsoever for it in respect of any use of or reliance upon this report by any third party.*

**PROJECT 301001-01156 - HYDROGRAPHY REVIEW REPORT**

REV	DESCRIPTION	ORIG	REVIEW	WORLEY- PARSONS APPROVAL	DATE	CLIENT APPROVAL	DATE
A	Issued for Internal Review	R.Stewart	K.Hegerty		16-Nov-10	N/A	
0	Issue for Use	 R.Stewart	 K.Hegerty	 L. Stalley	16-Nov-10		



**MORETON BAY REGIONAL COUNCIL  
HYDROGRAPHY REVIEW REPORT  
PACKAGE 5**

---

## **CONTENTS**

1.	INTRODUCTION .....	1
2.	HYDROGRAPHY REVIEW .....	2
2.1	Issues Identified During Stage 1 .....	2
2.1.1	Byron Creek .....	2
2.1.2	Mary River.....	2
2.1.3	Neurum Creek.....	2
2.1.4	Stanley River.....	2
2.2	Stream Connectivity.....	2
2.3	Inclusion of Floodplain Structures.....	2
2.4	Existing Resolution/Detail .....	3
3.	PROPOSED CHANGES.....	4
4.	RECOMMENDATIONS .....	5
5.	REFERENCES .....	6
APPENDIX 1 - HYDROGRAPHY REVIEW FIGURES		



**MORETON BAY REGIONAL COUNCIL  
HYDROGRAPHY REVIEW REPORT  
PACKAGE 5**

---

## **1. INTRODUCTION**

WorleyParsons Services Pty Ltd has been engaged by Moreton Bay Regional Council (MBRC) to carry out detailed surface water modelling over four of the regional catchments in their Local Government Area (LGA). The four catchments are Stanley River (STA), Neurum Creek (NEU), Mary River (MAR) and Byron Creek (BYR). These make up 'Package 5' of MBRC's Regional Floodplain Database Project (RFD Project) and are referred to as 'minor basins' in the GIS data provided by MBRC.

At the commencement of this project MBRC handed over an extensive data set including established 'broadscale' models (including associated results and reporting) as well as their established hydrography layer. The hydrography data provided by MBRC includes their previously established stream reaches, stream junctions, major basins, minor basins, major catchments and minor catchments. An overland flowpath layer has also been provided for the Mary River catchment.

WorleyParsons has reviewed the supplied hydrography data against other data provided for the project including aerial imagery and a 2.5m grid aerial LiDAR digital elevation model. Based on this review, we have identified issues and where necessary we have made recommendations to improve the suitability of the hydrography for use in the current detailed modelling project.



MORETON BAY REGIONAL COUNCIL  
HYDROGRAPHY REVIEW REPORT  
PACKAGE 5

---

## 2. HYDROGRAPHY REVIEW

### 2.1 Issues Identified During Stage 1

#### 2.1.1 Byron Creek

Byron Creek was not included in the Stage 1 broadscale modelling hence no issues have previously been identified.

#### 2.1.2 Mary River

Recommendations from Stage 1 are as follows:

*'The upper sub-catchments are relatively elongated and due to the application of the inflows at the lowest or wet cells (within the 2d\_sa polygon), accurate flood information may not be provided in the upper catchments. It is recommended that consideration be given to either subdividing the sub-catchments or applying portions of the sub-catchment inflows at a number of locations.'*

#### 2.1.3 Neurum Creek

Recommendations from Stage 1 are as follows:

*'Due to the application of the inflows at the lowest or wet cells (within the 2d\_sa polygon), accurate flood information may not be provided in the upper catchments. If Council requires more accurate flood information throughout the catchment, it is recommended that the sub-catchments be subdivided or portions of the sub-catchment inflows be applied at a number of locations.'*

#### 2.1.4 Stanley River

No hydrography issues were identified for the Stanley River catchment during Stage 1.

### 2.2 Stream Connectivity

Stream connectivity was generally found to be correct across the majority of the package 5 area. A few isolated instances have been identified where stream connectivity appears incorrect. A modified 'Stream Reaches' GIS layer has been provided reflecting WorleyParsons recommended stream connectivity.

### 2.3 Inclusion of Floodplain Structures

The majority of major floodplain structures have been picked up in the stream junction GIS layer provided by MBRC. Additional structures have been identified by WorleyParsons and it is recommended that these be incorporated into the MBRC hydrography stream junction layer.



**MORETON BAY REGIONAL COUNCIL  
HYDROGRAPHY REVIEW REPORT  
PACKAGE 5**

---

## **2.4 Existing Resolution/Detail**

The current resolution of the MBRC hydrography is considered suitable for use in the RFD project. This is on the basis that stream routing will generally be carried out hydraulically by TUFLOW as opposed to relying on WBNM hydrologic model's stream routing functionality which is calculated as a function of sub-catchment area.

The reason for this distinction is that flow attenuation occurring from channel routing may be incorrect in some instances when calculated using a function of sub-catchment area. This is due to a number of factors including sub-catchment shape, slope, and also by the hydrography including minor stream reaches (tributaries) which are located within a regional floodplain and which can artificially reduce the representative catchment size of the main channel.





**MORETON BAY REGIONAL COUNCIL  
HYDROGRAPHY REVIEW REPORT  
PACKAGE 5**

---

### **3. PROPOSED CHANGES**

WorleyParsons' recommended changes to the hydrography are detailed in the GIS data provided with this report. Figures 1 to 4 in Appendix A give an overview of this data for each minor basin however due to the large extent of the study areas it is recommended that this data be reviewed using a GIS software package rather than relying on these figures.

The following GIS layers have been provided to describe our recommended changes to the hydrography layer.

1. 'Recommended Stream Reaches': A complete updated set of stream reaches for each minor basin based on MBRC supplied data and incorporating WorleyParsons' suggested changes.
2. 'Recommended Stream Junctions': GIS layer including additional stream junctions which should be included. These stream junctions have been incorporated along the stream reaches layer at locations where additional sub-catchments should be delineated.
3. 'Identified Hydraulic Structure': This is a copy of the identified hydraulic structures that were identified in WorleyParsons previous package 5 Infrastructure Data Assessment Report (14/10/2010).
4. 'Miscellaneous Comments': Contains comments relating to the hydrography review. Comments are generally associated with highlighting issues with catchment delineation.

It is proposed that MBRC utilise WorleyParsons' GIS data layers to update the package 5 hydrography. Additional catchments should be delineated along the recommended stream reaches layer at points contained within the recommended stream junctions layer and also the identified hydraulic structure layer.

The location of the additional stream junctions have been chosen based on several factors including:

1. To provide additional catchment break down in the upper catchments to reduce potential inaccuracies identified in the previous stage 1 broadscale modelling.
2. To provide increased sub-catchment resolution where appropriate.
3. To improve sub-catchment shape and length.
4. Stream junctions have also been put at new stream confluences in the recommended stream reaches layer.



**MORETON BAY REGIONAL COUNCIL  
HYDROGRAPHY REVIEW REPORT  
PACKAGE 5**

---

## **4. RECOMMENDATIONS**

It is recommended that MBRC update the package 5 hydrography based on the proposed changes discussed in this report and detailed in the supplied GIS data.



**MORETON BAY REGIONAL COUNCIL  
HYDROGRAPHY REVIEW REPORT  
PACKAGE 5**

---

## **5. REFERENCES**

BMT WBM, July 2010, *"Hydraulic Modelling (Broadscale) Regional Floodplain Database Stage 1 Sub-Project 1D"*

WorleyParsons, September 2010 *"Regional Floodplain Database - Floodplain Terrain"*

WorleyParsons, September 2010 *"Regional Floodplain Database, Design Rainfall - Burpengary Pilot Project"*





# WorleyParsons

resources & energy

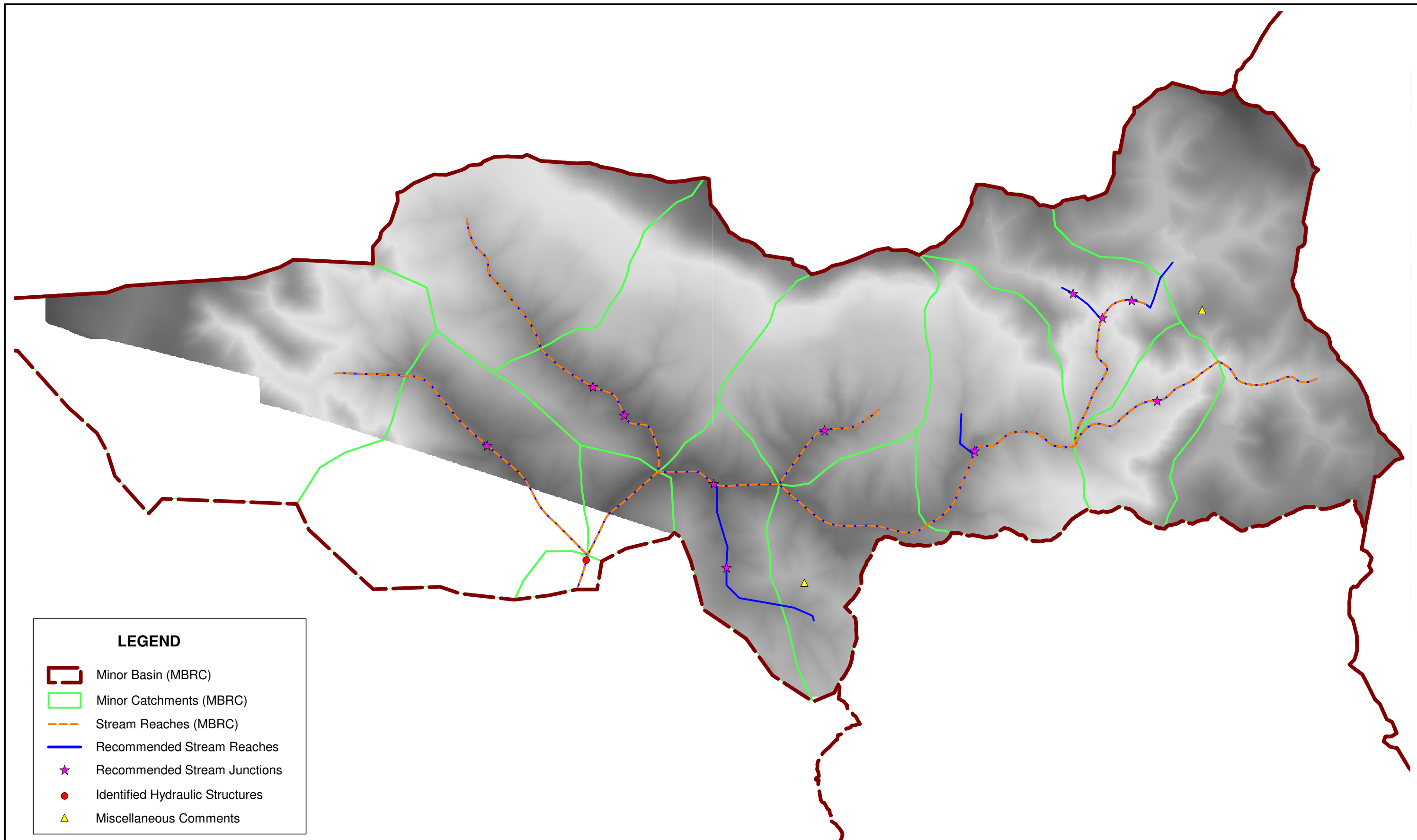
EcoNomics™

MORETON BAY REGIONAL COUNCIL  
HYDROGRAPHY REVIEW REPORT  
PACKAGE 5

---

## Appendix 1 - Hydrography Review Figures





**LEGEND**

- Minor Basin (MBRC)
- Minor Catchments (MBRC)
- Stream Reaches (MBRC)
- Recommended Stream Reaches
- Recommended Stream Junctions
- Identified Hydraulic Structures
- Miscellaneous Comments

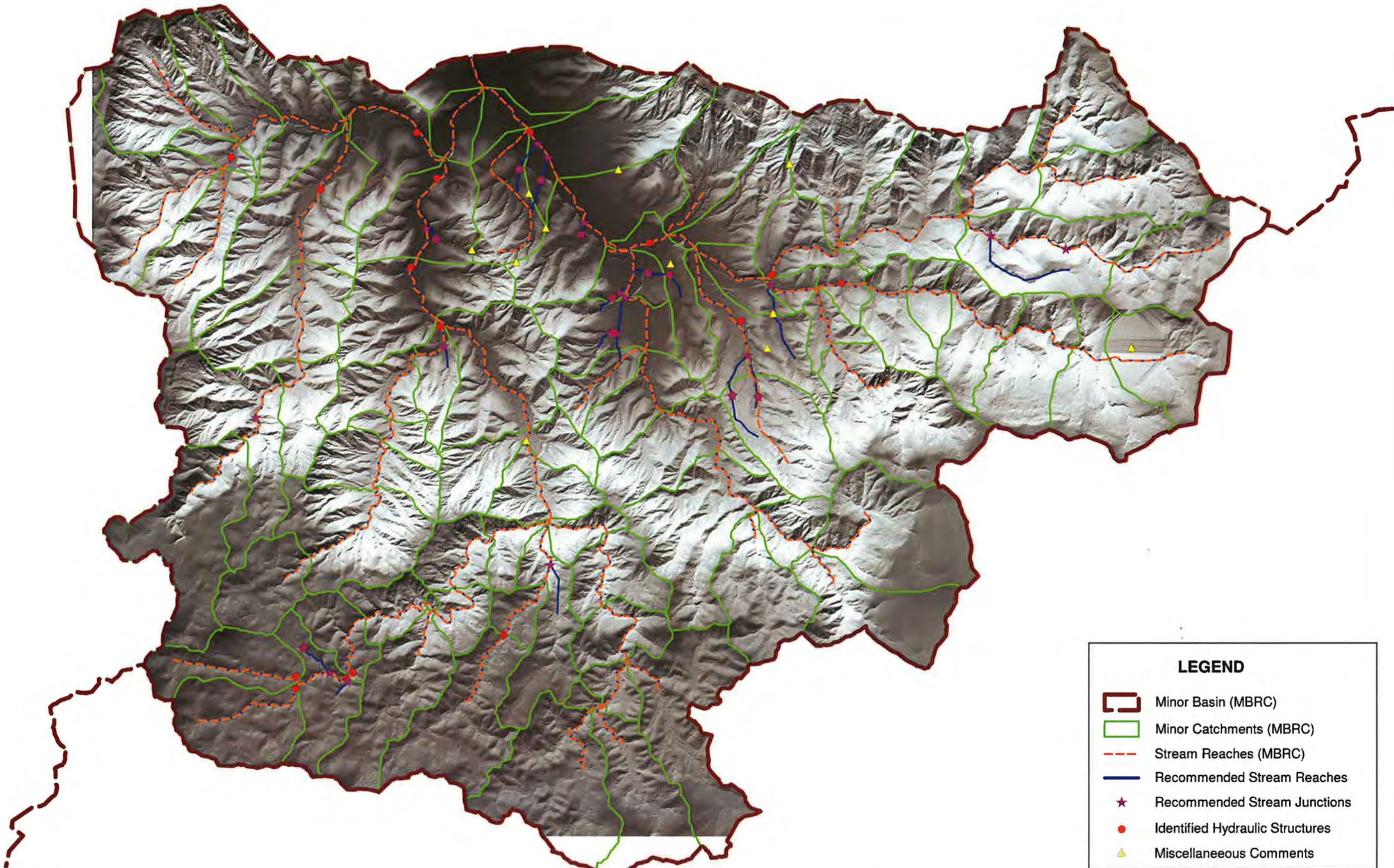
Existing hydrographic data supplied by MBRC.  
Miscellaneous\_Comments, Identified Hydraulic  
Structures, Recommended Stream Reaches,  
Recommended Stream Junctions supplied by  
WorleyParsons on the 11/11/10

**NOT TO SCALE**

				<b>MORETON BAY REGIONAL COUNCIL</b>			
				<b>REGIONAL FLOODPLAIN DATABASE PROJECT</b>			
				<b>FIGURE 1 BYRON CREEK HYDROGRAPHY REVIEW</b>			
Project No: 301001-01156		Figure: 301001-01156-EN-DAL-0008		Rev: A			







**LEGEND**

- Minor Basin (MBRC)
- Minor Catchments (MBRC)
- Stream Reaches (MBRC)
- Recommended Stream Reaches
- ★ Recommended Stream Junctions
- Identified Hydraulic Structures
- ▲ Miscellaneous Comments

Existing hydrographic data supplied by MBRC.  
Miscellaneous\_Comments, Identified Hydraulic  
Structures, Recommended Stream Reaches,  
Recommended Stream Junctions supplied by  
WorleyParsons on the 11/11/10

**NOT TO SCALE**

A	11/11/2010	Issued for use	RS	JM	RS	ER
Rev	Date	Revision Description	ORIG	CHK	ENG	APPD



**MORETON BAY REGIONAL COUNCIL**

**REGIONAL FLOODPLAIN DATABASE PROJECT**

**FIGURE 2**  
**MARY RIVER HYDROGRAPHY REVIEW**

Project No: 301001-01156	Figure: 301001-01156-EN-DAL-0009	Rev: A
--------------------------	----------------------------------	--------







**LEGEND**

- Minor Basin (MBRC)
- Minor Catchments (MBRC)
- Stream Reaches (MBRC)
- Recommended Stream Reaches
- Recommended Stream Junctions
- Identified Hydraulic Structures
- Miscellaneous Comments

Existing hydrographic data supplied by MBRC.  
Miscellaneous\_Comments, Identified Hydraulic  
Structures, Recommended Stream Reaches,  
Recommended Stream Junctions supplied by  
WorleyParsons on the 11/11/10

**NOT TO SCALE**

A	11/11/2010	Issued for use	RS	JM	RS	ER
Rev	Date	Revision Description	ORIG	CHK	ENG	APPD

**MORETON BAY REGIONAL COUNCIL**

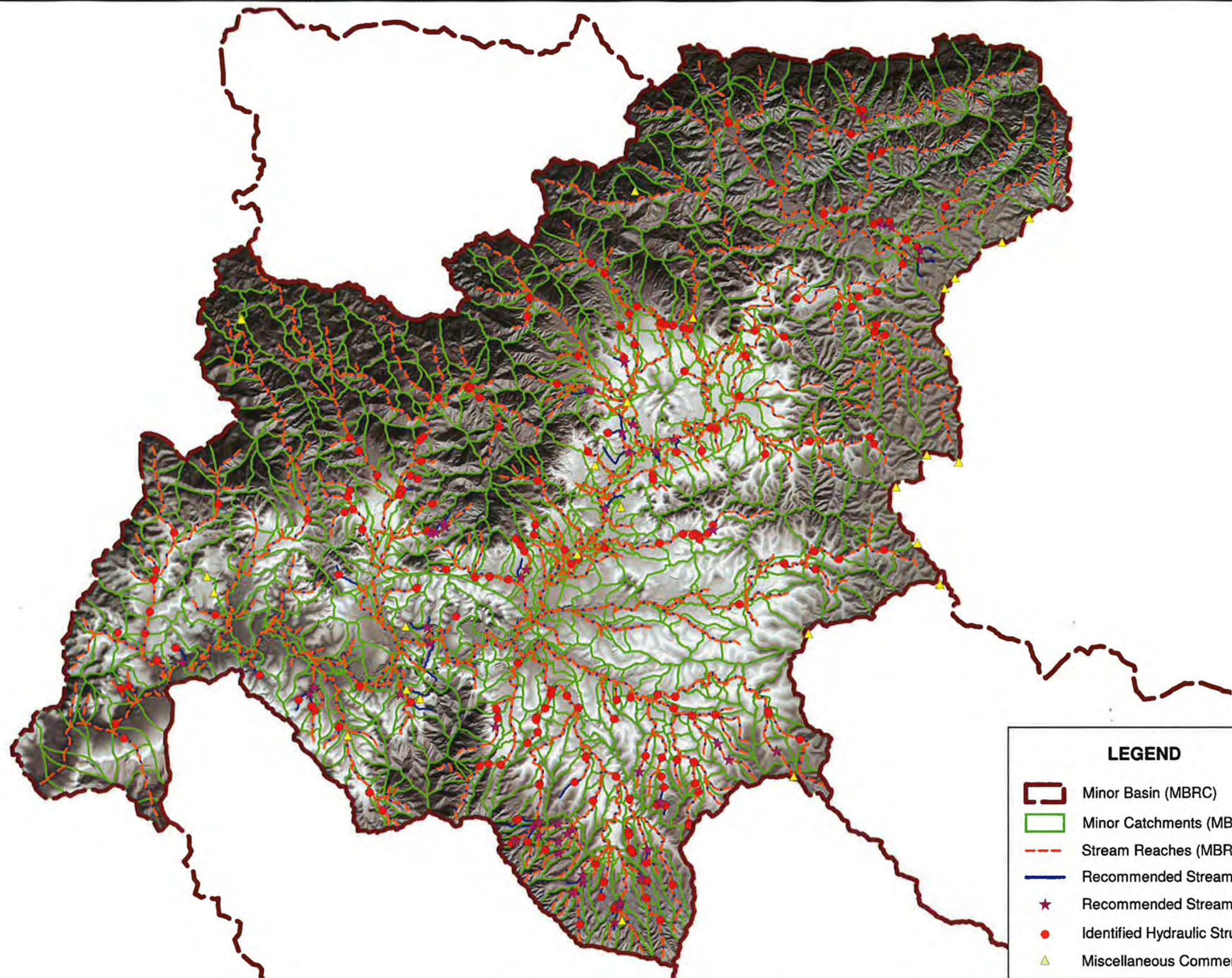
**REGIONAL FLOODPLAIN DATABASE PROJECT**

**FIGURE 3  
NEURUM CREEK HYDROGRAPHY REVIEW**

Project No: 301001-01156    Figure: 301001-01156-EN-DAL-0010    Rev: A









**LEGEND**

- Minor Basin (MBRC)
- Minor Catchments (MBRC)
- Stream Reaches (MBRC)
- Recommended Stream Reaches
- ★ Recommended Stream Junctions
- Identified Hydraulic Structures
- △ Miscellaneous Comments

Existing hydrographic data supplied by MBRC.  
Miscellaneous\_Comments, Identified Hydraulic  
Structures, Recommended Stream Reaches,  
Recommended Stream Junctions supplied by  
WorleyParsons on the 11/11/10

**NOT TO SCALE**

A	11/11/2010	Issued for use	RS	JM	RS	ER
Rev	Date	Revision Description	ORIG	CHK	ENG	APPD
 <b>WorleyParsons</b> resources & energy						

**MORETON BAY REGIONAL COUNCIL**

**REGIONAL FLOODPLAIN DATABASE PROJECT**

**FIGURE 4  
STANLEY RIVER HYDROGRAPHY REVIEW**

Project No: 301001-01156

Figure: 301001-01156-EN-DAL-0011

Rev: A







# WorleyParsons

resources & energy

EcoNomics<sup>SM</sup>

MORETON BAY REGIONAL COUNCIL

REGIONAL FLOODPLAIN DATABASE

HYDROLOGIC AND HYDRAULIC MODELLING REPORT: MARY RIVER (MAR)

---

## APPENDIX C: CALIBRATION AND VALIDATION FEASIBILITY REPORT







**WorleyParsons**

resources & energy

**Eco**Nomics™

**MORETON BAY REGIONAL COUNCIL**

# **Calibration and Validation Feasibility Report**

## **Package 5**

301001-01156 – EN-REP-0004

4 November 2010

**Infrastructure & Environment**

Unit 5, Primary Central,  
63 Primary School Court, Maroochydore P.O. Box 1757 Sunshine Plaza QLD 4558  
Australia  
Telephone: +61 7 5475 6400  
Facsimile: +61 7 5475 6499  
[www.worleyparsons.com](http://www.worleyparsons.com)  
ABN 61 001 279 812



# WorleyParsons

resources & energy

EcoNomics

**MORETON BAY REGIONAL COUNCIL  
CALIBRATION AND VALIDATION FEASIBILITY REPORT  
PACKAGE 5**

---

**Disclaimer**

*This report has been prepared on behalf of and for the exclusive use of Moreton Bay Regional Council, and is subject to and issued in accordance with the agreement between Moreton Bay Regional Council and WorleyParsons. WorleyParsons accepts no liability or responsibility whatsoever for it in respect of any use of or reliance upon this report by any third party.*

---

**PROJECT 301001-01156 - CALIBRATION AND VALIDATION FEASIBILITY REPORT**

---

REV	DESCRIPTION	ORIG	REVIEW	WORLEY- PARSONS APPROVAL	DATE	CLIENT APPROVAL	DATE
A	Issue for Internal Review	R.Stewart	K.Hegerty		3-Nov-10	N/A	
0	Issue for Use	 R.Stewart	 K.Hegerty	 E.Reid	4-Nov-10		



**MORETON BAY REGIONAL COUNCIL  
CALIBRATION AND VALIDATION FEASIBILITY REPORT  
PACKAGE 5**

---

## CONTENTS

1.	INTRODUCTION .....	1
2.	AVAILABLE DATA .....	2
2.1	Flood Gauge Data.....	2
2.2	Rainfall Data .....	3
2.3	Historic Flood Marks .....	4
2.4	Other Data .....	4
3.	FLOOD EVENTS .....	5
3.1	Possible Events for Calibration/Validation .....	5
3.1.1	Stanley River .....	5
3.1.2	Mary River .....	5
3.1.3	Neurum Creek .....	5
3.1.4	Byron Creek .....	5
3.2	Feasibility of Calibration/Validation .....	6
3.2.1	Stanley River .....	6
3.2.2	Mary River & Neurum Creek .....	6
3.2.3	Byron Creek .....	6
4.	RECOMMENDATIONS .....	7
4.1.1	Stanley River .....	7
4.1.2	Mary River & Neurum Creek .....	7
4.1.3	Byron Creek .....	7
5.	REFERENCES .....	8
APPENDIX 1 - BOM BRISBANE, BREMER, STANLEY RIVERS FLOOD WARNING NETWORK		



**MORETON BAY REGIONAL COUNCIL  
CALIBRATION AND VALIDATION FEASIBILITY REPORT  
PACKAGE 5**

---

## **1. INTRODUCTION**

WorleyParsons Services Pty Ltd has been engaged by Moreton Bay Regional Council (MBRC) to carry out detailed surface water modelling over four of the regional catchments in their Local Government Area (LGA). The four catchments are Stanley River (STA), Neurum Creek (NEU), Mary River (MAR) and Byron Creek (BYR). These catchments make up 'Package 5' of MBRC's Regional Floodplain Database Project (RFD Project) and are referred to as 'minor basins' in the GIS data provided by MBRC.

At the commencement of this project MBRC handed over an extensive data set comprising established 'broad scale' models (including associated results and reporting) as well as several sources of historic flooding information. The purpose of this report is to assess the feasibility of carrying out historic event calibration and validation for the current detailed modelling project. This assessment is based on a review of the data set provided by MBRC.



**MORETON BAY REGIONAL COUNCIL  
CALIBRATION AND VALIDATION FEASIBILITY REPORT  
PACKAGE 5**

---

## **2. AVAILABLE DATA**

Details of the data available for calibration and validation modelling are provided in this section. This includes data provided by MBRC as well as information obtained from websites of the Bureau of Meteorology (BoM).

The BoM operate a flood warning alert network for the upper Brisbane River which incorporates several gauges within the Package 5 area. Details of the network, including location of alert flood and rainfall gauges are provided in Appendix A for reference purposes.

### **2.1 Stream Gauge Data**

Stanley River has long term historic stream gauge data at Peachester and Woodford. Both of these stream gauges now incorporate telemetry and form part of the BoM's flood warning system. Details of the BoM's flood warning system are provided in Appendix A.

Hourly flow rate data has been provided for the Stanley River Peachester gauge for the period ranging from June 1927 up to April 2009.

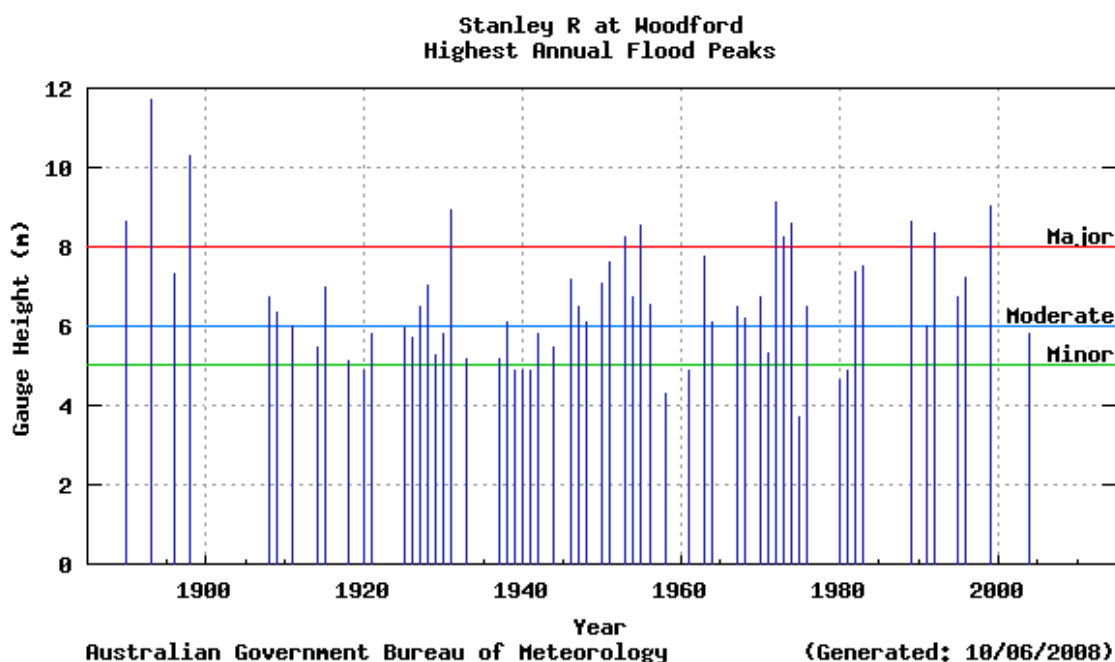
Hourly flow rate data has been provided for the Stanley River Woodford gauge for the period ranging from February 2002 up to April 2009. This is not the complete range of data for the Stanley River which is known to extend back over 100 years. Historic flood heights at this stream gauge are shown on Figure 2.1 below. This figure is taken from the BoM's website "FLOOD WARNING SYSTEM for the UPPER BRISBANE RIVER ABOVE WIVENHOE DAM".





MORETON BAY REGIONAL COUNCIL  
CALIBRATION AND VALIDATION FEASIBILITY REPORT  
PACKAGE 5

**Figure 2.1 Stanley River Annual Flood Peaks (Source BoM)**



There is no stream gauge data available for Byron Creek, Mary River or Neurum Creek (within the vicinity of the study area).

## 2.2 Rainfall Data

There are several historic rainfall stations with both continuous ('pluvio' or 'ALERT' data) and daily data situated in and around the package 5 minor basins. The spatial coverage of these rain gauges should allow a sufficient representation of historic rainfall patterns associated with the large weather systems which have historically generated regional flooding in the larger package 5 minor basins.

It is noted that due to the relatively small size of the Byron Creek minor basin (approx 6.8km<sup>2</sup>), peak flooding in this catchment will be dominated by relatively short duration intense rainfall events. The inherent nature of these weather events is that they are not widespread and consequently historic flooding in Byron Creek is not likely to be well picked up by the nearest continuous rain gauge stations nearly 5km away.

We note that the MBRC supplied rainfall database does not include the pluvio data which is understood to be available from BoM for the Woodford Bcc rain gauge (dating back to 1964). The MBRC data provided is for the Woodford ALERT rain gauge only which dates back to November 1994.



**MORETON BAY REGIONAL COUNCIL  
CALIBRATION AND VALIDATION FEASIBILITY REPORT  
PACKAGE 5**

---

We also note that only daily rainfall data is available for the Somerset Dam and the Hume Lane ALERT rain gauges in the supplied MBRC database. It is expected that some form of continuous record should also be available for these gauges from BoM.

## **2.3 Historic Flood Marks**

A GIS layer called “OLD CAB Dist Historic Flood Levels’ has been provided by MBRC. This contains recorded flood heights for 15 separate historic flood events.

There are over 110 recorded historic flood levels within the Stanley River minor basin. The two historic events populated with the most historic flood level data points are the February 1999 event and the April 1989 event. There are only two historic flood marks in the STA catchment for the May 2009 event (near Woodford).

No recorded flood level data has been provided for Byron Creek, Mary River or Neurum Creek.

## **2.4 Other Data**

A GIS layer called “Maximum Height Indicators’ has been provided by MBRC, however this data layer doesn’t contain any information relevant to the Package 5 minor basins.

A GIS layer called “WQ Event Monitoring Program’ has been provided by MBRC, however this data layer also doesn’t contain any information relevant to the Package 5 minor basins.

It is recommended that data associated with design and historic flood levels in Somerset Dam be sourced. The reason for this is that the water level in the dam will influence flood levels in the lower Stanley River Catchment.



**MORETON BAY REGIONAL COUNCIL  
CALIBRATION AND VALIDATION FEASIBILITY REPORT  
PACKAGE 5**

---

## **3. FLOOD EVENTS**

### **3.1 Possible Events for Calibration/Validation**

#### **3.1.1 Stanley River**

The following historic floods are considered the most appropriate for calibration and validation of the Stanley River catchment.

- February 1999: 373mm rainfall at Woodford over 94 hours. This flood was classified as a major flood at BoM's Woodford Flood ALERT flood gauge. There are also numerous peak flood level historic marks available for this event
- April 1989: 609mm rainfall at Crohamhurst over 8 days. This flood was classified as a major flood at BoM's Woodford Flood ALERT flood gauge. There are also numerous peak flood level historic marks available for this event. In the rainfall data provided by MBRC this event has only been picked up in the Crohamhurst pluvio data. It is expected that additional pluvio data could also be sourced from the BoM Woodford rain gauge.

#### **3.1.2 Mary River**

If sufficient peak water level flood marks can be obtained, the following historic floods are considered the most appropriate for calibration and validation of the Mary River catchment.

- March 2003: 519mm rainfall at West Bellthorpe rain gauge over 41 hours (peak 6 hour intensity of 54mm/hr);
- February 1999: 489mm rainfall at West Bellthorpe rain gauge over 4 days (peak 6 hour intensity of 19mm/hr).

#### **3.1.3 Neurum Creek**

If sufficient peak water level flood marks can be obtained, the following historic floods are considered the most appropriate for calibration and validation of the Neurum Creek catchment.

- February 1999: 502mm rainfall at Mount Mee rain gauge over 93 hours (peak 6 hour intensity of 21mm/hr).
- March 2009: 350mm rainfall at Mount Mee rain gauge over 76 hours (peak 6 hour intensity of 15mm/hr).

#### **3.1.4 Byron Creek**

Calibration of the Byron Creek catchment is not considered feasible due to the lack of both suitable rainfall data and also the expected lack of flood marks that will be available in this bushland dominated catchment.



**MORETON BAY REGIONAL COUNCIL  
CALIBRATION AND VALIDATION FEASIBILITY REPORT  
PACKAGE 5**

---

## **3.2 Feasibility of Calibration/Validation**

### **3.2.1 Stanley River**

Calibration and validation of the Stanley River catchment is considered feasible based on the data provided by MBRC. There are sufficient historic flood level marks and rainfall data to carry out these tasks for the events described in Section 3.1.1.

It is however recommended that additional pluviometer data be sourced from the BoM Woodford rain gauge for the April 1989 event.

### **3.2.2 Mary River & Neurum Creek**

There is sufficient rainfall data for both the Mary River and the Neurum Creek catchments for the events described in Section 3.1.2 and Section 3.1.3. Unfortunately no historic water level data is currently available in either of these catchments. Consequently, historic flood level data would need to be collected to undertake calibration and validation.

### **3.2.3 Byron Creek**

Calibration of the Byron Creek catchment is not considered feasible due to the lack of both suitable rainfall data and also the expected lack of flood marks that will be available in this bushland dominated catchment.



**MORETON BAY REGIONAL COUNCIL  
CALIBRATION AND VALIDATION FEASIBILITY REPORT  
PACKAGE 5**

---

## **4. RECOMMENDATIONS**

### **4.1.1 Stanley River**

It is recommended that calibration and validation of the Stanley River models be carried out for the events detailed in Section 3.1.1.

It is recommended that additional pluvio data be sourced from the BoM Woodford rain gauge for the April 1989 event.

It is also recommended that the complete historic record be sourced for the Woodford Stanley River flood gauge.

It is recommended that data associated with design and historic flood levels in Somerset Dam be sourced. The reason for this is that the water level in the dam will influence flood levels in the lower Stanley River Catchment.

### **4.1.2 Mary River & Neurum Creek**

It is recommended that MBRC collect historic flood level data for these catchments for the events detailed in Section 3.1.2 and 3.1.3.

### **4.1.3 Byron Creek**

It is considered that no historic calibration can be carried out for the Byron Creek catchment and that calibration parameters for the Byron Creek models be based on the calibrated values of the remaining package 5 minor basins.



**MORETON BAY REGIONAL COUNCIL  
CALIBRATION AND VALIDATION FEASIBILITY REPORT  
PACKAGE 5**

---

## **5. REFERENCES**

Bureau of Meteorology, September 2009 (last website update), "FLOOD WARNING SYSTEM for the UPPER BRISBANE RIVER ABOVE WIVENHOE DAM" ([http://www.bom.gov.au/hydro/flood/qld/brochures/brisbane\\_upper/brisbane\\_upper\\_above\\_wivenhoe\\_dam.shtml](http://www.bom.gov.au/hydro/flood/qld/brochures/brisbane_upper/brisbane_upper_above_wivenhoe_dam.shtml))

GHD (for MBRC), June 2010, "Regional Floodplain Database, Sub-project 2K Historic Flood Information"

Sargent Consulting (for the Caboolture Shire Council), March 2005, "Stanley River Flood Study Final Report"







# WorleyParsons

resources & energy

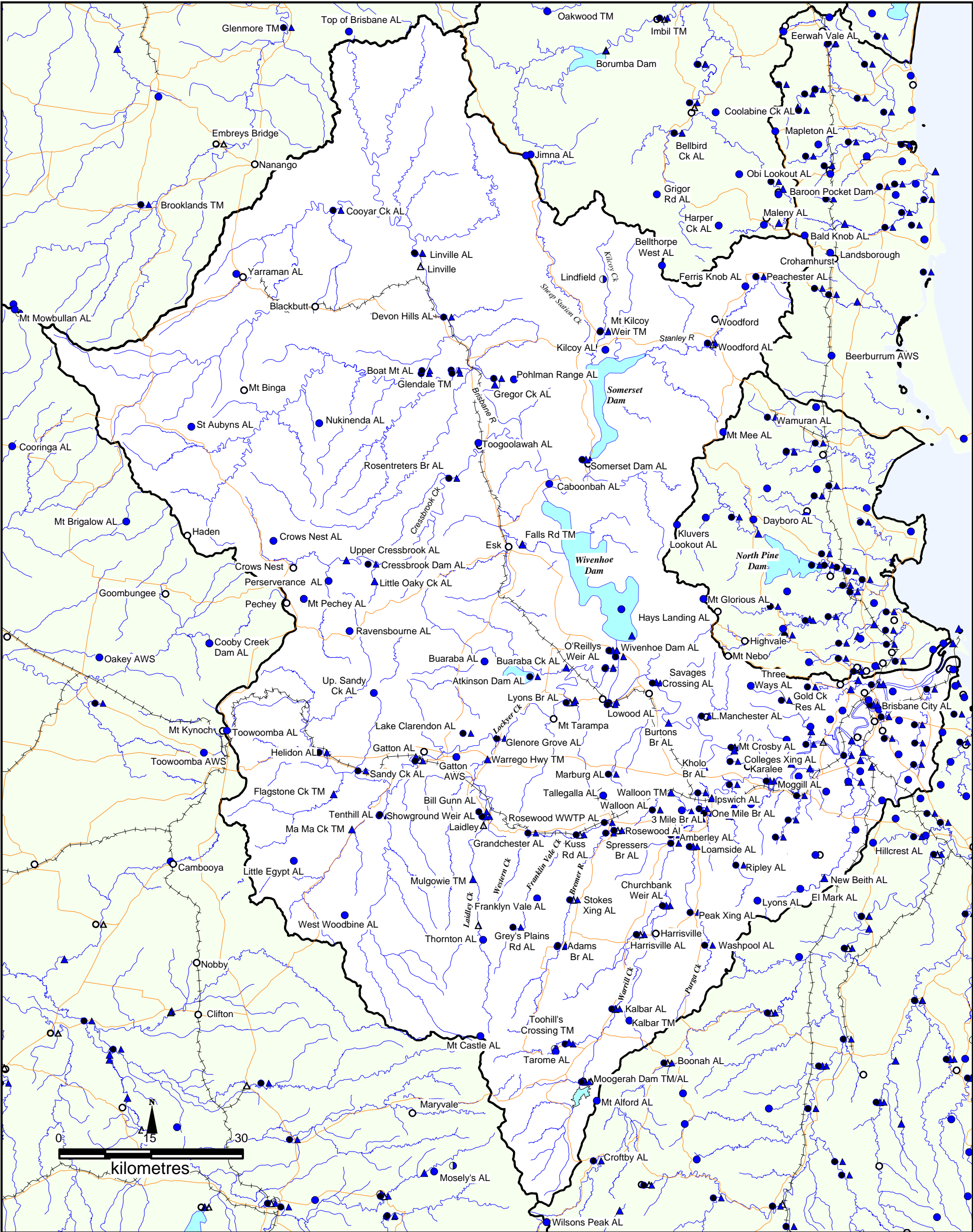
EcoNomics

MORETON BAY REGIONAL COUNCIL  
CALIBRATION AND VALIDATION FEASIBILITY REPORT  
PACKAGE 5

---

## Appendix 1 - BoM Brisbane, Bremer, Stanley Rivers Flood Warning Network





<ul style="list-style-type: none"> <li>Manual Heavy Rainfall Station</li> <li>Daily Reporting Rainfall Station</li> <li>Manual River Station</li> <li>Telemetry Rainfall Station</li> <li>Telemetry River Station</li> </ul>	<h2>BRISBANE, BREMER &amp; STANLEY RIVERS FLOOD WARNING NETWORK</h2>	<ul style="list-style-type: none"> <li>Major Roads</li> <li>Railway</li> </ul> <p><i>Revised: Nov 2009</i></p>
--	--	--