



YOUNGS CROSSING UPGRADE PROJECT UPDATE

FEBRUARY 2022

Moreton Bay Regional Council, with \$32.75m in financial support from the Australian Government, is upgrading Youngs Crossing Road at Joyner where it crosses the North Pine River to improve flood immunity and cater for growing traffic needs. Over the past 12 months alone, weather events have caused Youngs Crossing Road to close eight times for a total of more than 246 hours.

Recent activities

Since releasing details of the final concept design in July 2021, the project team has been progressing the detailed design for the new road and bridge, as well as the intersection at Dayboro Road.

Many on-site investigations and reviews have been carried out as part of this work, including land surveys, vegetation audits, soil and rock sampling, locating essential services (water, sewerage, electrical, telecommunication) and road and pavement assessments.

These site investigations as well as technical and road safety standards and feedback from the Department of Transport and Main Roads, have informed the design.

The project team has appreciated the community's patience and understanding while this detailed design work has been done.

For more about its design and features see the centre pages.

Environmental planning under way

As highlighted during the 2020 Youngs Crossing community engagement survey, environment was the most highly valued concern among all participants. You wanted to see the unique character of the area being retained by minimising impacts, particularly to koalas and other local fauna and flora.

Environmental planning for areas along and adjacent to the Youngs Crossing alignment is continuing with an expansion to Tweedale Reserve, offset tree planting programs and fauna-friendly green infrastructure all part of the mix to deliver the best possible outcomes.

See back page for more details.

Next steps

With the road alignment and associated features now largely determined, the design process is now focused on producing the final detailed drawings, plans and specifications required for construction.

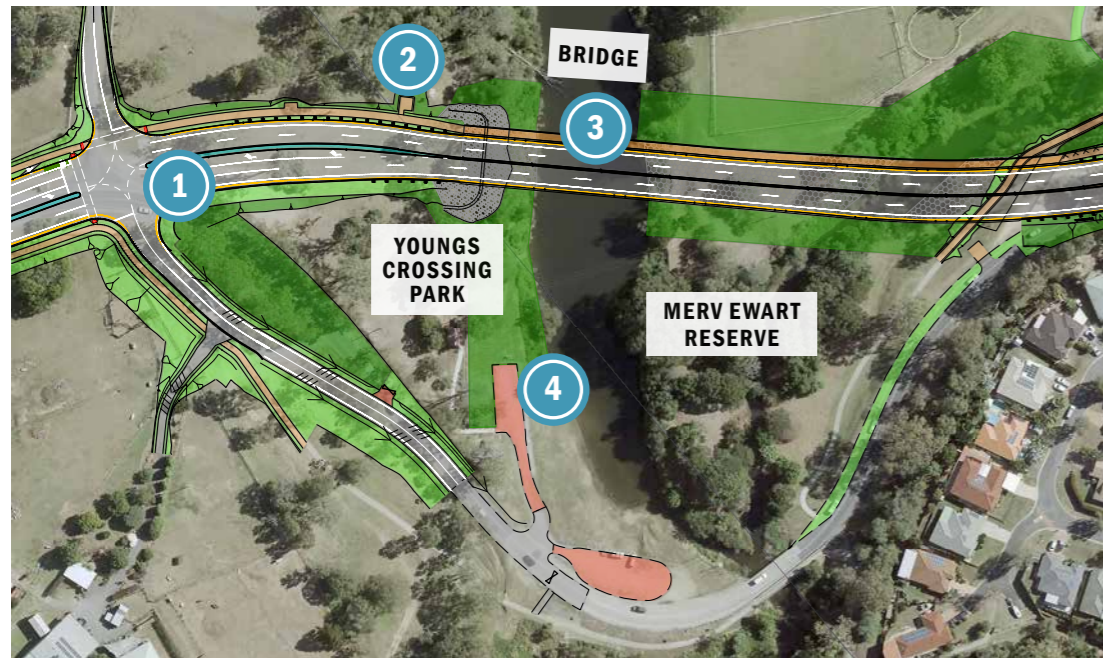
Expressions of Interest for construction will be called through to April. Short-listed businesses will then be invited to tender, with building works expected to get under way around August/September.

Some early essential service relocations are planned to start in April before road and bridge construction begins. Residents and impacted stakeholders will be advised in advance of these important works.

Project attracts industry attention

Around 30 companies from the road and bridge construction sector attended a project awareness session late last year. The companies received an introduction to the project and its key components.

The session was aimed at creating early industry interest in this regional road project and highlighted anticipated timeframes and delivery expectations, such as the need to maintain traffic access along Youngs Crossing Road during construction.



1 U-turn capability

U-turns will be permitted to assist vehicles travelling from Dayboro Road to access the Youngs Crossing Road entrance to the pony club.

2 Lookout

A lookout has been included on the southern approach to the new bridge.

3 Bridge

Spanning 212m across North Pine River and Sideling Creek.

4 Youngs Crossing Park

Vehicle access to Youngs Crossing Park will be via the intersection at the bus depot and connect to the existing car park. The current road crossing over the North Pine River will close to traffic but be retained for pedestrian/active transport use, with a new path under the bridge linking to Merv Ewart Reserve.



Youngs Crossing/Dayboro Road intersection

Features include:

- ✓ increased left turn capacity from Dayboro Road into Youngs Crossing Road
- ✓ increased right turn capacity from Youngs Crossing Road into Dayboro Road (dual lanes)
- ✓ raised central median island on Dayboro Road to improve safety
- ✓ guardrail on the southern side of Dayboro Road
- ✓ on-road cycle lanes on all approaches
- ✓ on-demand pedestrian signals on left turn slip lanes
- ✓ off-road shared pathways

For more maps and information visit the website

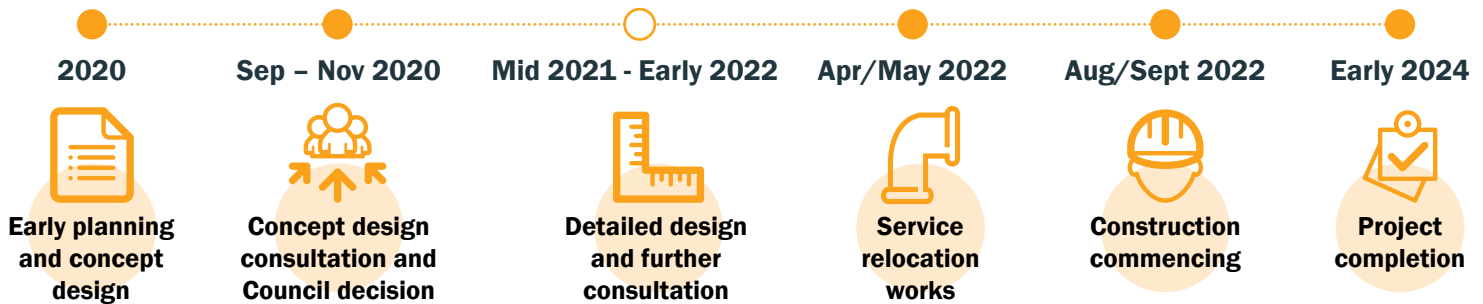
Other Key Features

- ✓ 1% AEP flood immunity (a one per cent probability of flooding occurring at least once in any year)
- ✓ Pedestrian footpath and on-road cycle lanes
- ✓ Extensive landscaping and offset plantings
- ✓ Improvements to the Protheroe Road intersection
- ✓ Opportunity to retain the two large fig trees at the waterhole
- ✓ Reduced impact on lowland rainforest area
- ✓ 60km/h speed limit
- ✓ Opportunity for construction to mostly occur offline to minimise disruptions, temporary works and alterations.



Project timing

WE ARE HERE



Tweeddale Reserve expanded

Moreton Bay Regional Council has guaranteed a greener future for the parcel of land located west of Andrew Petrie Drive, Petrie.

The 1.6-hectare lot has been amalgamated with adjoining Tweeddale Reserve to allow the project team to now formally include the site in environmental plans for the Youngs Crossing Upgrade Project.

Planting programs under way

Since January 2021 Council's Green Infrastructure Team has been collecting seeds from koala food and habitat trees along Youngs Crossing Road. Many of the seeds have been cared for and nurtured by volunteers at Kumbartcho Community Nursery, while others are being grown at Council's own nursery at Petrie.

Some have already been planted at locations along the alignment, including within the new Tweeddale Reserve corridor. Planning is under way for more to be planted in connecting habitat corridors over the next 12 to 18 months.

To date, Council officers have collected enough seeds to grow more than 10,000 koala food and habitat trees, which will allow them to be used with other local projects. The Green Infrastructure Team has been working with koala volunteers to identify the local trees favoured by our local koalas.

The Youngs Crossing Upgrade Project has a tree offset requirement of 5:1. This means for every tree removed for construction purposes, five new ones will be planted. They will include a mix of species, including mature stock, and will be strategically planted in and around the project site to provide safer habitat and enhanced corridors and connectivity for local fauna.

Koala survey

Our Green Infrastructure Team conducted Council's first ever koala drone survey in and around the Youngs Crossing site in mid-December. The pre-dawn aerial inspections used infrared technology to identify koalas and will help inform the project's environmental planning.

Safer connections for fauna

Unlike the existing road, the new bridge will provide the opportunity for wildlife to access safer crossing points, including below the structure.

In addition to the planned tree planting programs, koalas and other native fauna will be supported by:

- ✓ considering koala post and rail/ fauna ledges below the bridge
- ✓ exclusion fencing to reduce koala access to the new road and promote safe crossing points
- ✓ considering fauna poles and rope bridges to connect tree canopies and assist animal movement
- ✓ the use of fauna-friendly fencing where possible
- ✓ reusing and repurposing suitable tree hollows and other vegetation to support habitats
- ✓ designing and constructing bridges, culverts and drainage works to minimise barriers to fish and water flow
- ✓ on-road wildlife warning stencils as well as LED warning signs.

For more information



Visit: moretonbay.qld.gov.au/youngs-crossing



Phone the project team on 1300 544 874 between 8.30am and 5pm Monday to Friday



Email the project team: youngscrossing@moretonbay.qld.gov.au