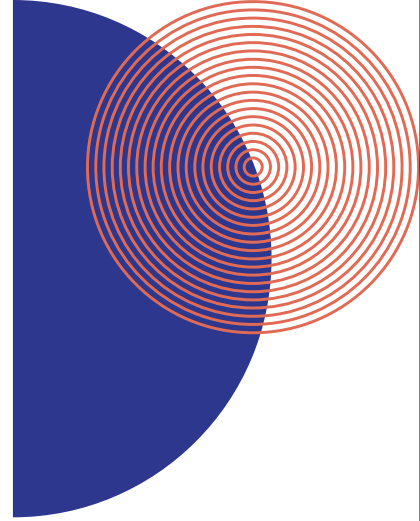


Our Healthy Environments



Rocky Hole, Mount Mee.

Our Goal:

By 2033, our Moreton Bay will be renowned for its healthy natural and built environments that enhance our identity, support biodiversity and our sustainable lifestyles.

Snapshot

A snapshot of our environments today



10,977ha
of council
environmental
reserves



42%
of the region
covered in native
vegetation



9,000ha
of internationally
significant
wetlands



7,721ha
of local seagrass
beds, supporting
resident turtle
and dugong
populations
(Kovacs 2022)



805
native animal
species recorded
in Moreton Bay
(Wildnet 2021)



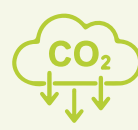
34
Fauna crossings



625
landholders engaged
with the Land for
Wildlife and Voluntary
Conservation
Agreement Program



9
transfer stations,
and 3 major waste
management
facilities with
onsite landfills



188,127
tonnes of emissions
avoided through
council's Landfill
Gas Management
Project



1,045
tonnes of
reusable items
sold at council's
waste facility
treasure markets

Key services we deliver

- Environmental Services
- Conservation Management
- Fire Management
- Pest Management
- Environmental Centres
- Environmental Education and Information
- Waste and Recycling Services
- Sustainability Planning
- Biodiversity Planning
- Natural Hazards Planning
- Coastal and Waterways Management
- Waterbody Maintenance

What we want to achieve together



Our outcomes

- 01 Our special natural areas and wildlife habitats are connected, protected and enhanced.
- 02 Our coasts and waterway catchments are used sustainably, and environmental values are protected and enhanced.
- 03 Our neighbourhoods, buildings and infrastructure support sustainable living.
- 04 We understand and proactively respond to climate change and natural hazard risks.
- 05 We enable our materials and resources to be used cleverly and recycled to avoid waste and pollution.
- 06 Our communities and businesses practice sustainability in the choices they make every day.

Our focus for the next five years

Our strategy and key plans

- **Environment and Sustainability Strategy** - Develop and deliver a new Environment and Sustainability Strategy to guide the achievement of our aspirations for a 'healthy environment' over the next 20 years and beyond and provide a framework for environment and sustainability across our operations and our communities.
- **Waste Reduction and Recycling Plan** - Continue to deliver our Waste Reduction and Recycling Plan 2016-2026 and Action Plans to proactively move towards a zero-waste future, where waste is avoided, reused and recycled where possible.
- **Biodiversity Plan** - Progress development of our Biodiversity Plan to protect and manage habitats and the diversity of animals and plants in the region, which will include investigating a range of innovative approaches to deliver biodiversity outcomes.
- **Climate Mitigation and Adaptation Plan** - Progress development of our Climate Mitigation and Adaptation Plan/s that will outline the strategic direction and detailed actions for greenhouse gas emissions reduction and climate change adaptation and resilience.
- **Bushfire Management Plan** - Review and transition our Bushfire Management Strategy to a Plan to proactively manage bushfire risk to both the built and natural environment.
- **Coastal Hazard Adaptation Plan** - Continue to progress development of our Coastal Hazard Adaptation Plan (Living Coast) to proactively manage the impact of climate change and hazards including coastal erosion, storm tide inundation and predicted sea level rise, on our coastlines.
- **Integrated Water Management Plan** - Review and transition our Water Strategy 2012-2031 and Total Water Cycle Management Plan to a new Integrated Water Management Plan to guide the management of water into the future including catchment resilience, waterway health, water quality, flooding, sustainable water use, environmental processes and integration with the built environment.
- **Floodplain Management Plans** - Develop and deliver plans that will guide the management of the region's floodplains and manage the current and future risks associated with land use and development within these areas.



Our key initiatives

Land Buyback for Environmental Purposes Program

Continue to acquire strategic properties to enhance green corridors and protect habitats for priority species including the koala.

Fauna Movement Infrastructure

Continue to deliver fauna movement infrastructure throughout the green corridor network to improve ecological connectivity and support safe and ongoing wildlife movement.

Street and Shade Tree Planting

Continue to prioritise our street and shade tree program to improve urban amenity and community comfort and address the risks associated with urban heat islands.

Conservation Program

Continue to deliver our environment focused initiatives that enhance and protect the region's natural values and wildlife habitats, including our Bushcare, Land for Wildlife, and Voluntary Conservation Programs.

Catchment Management

Continue to manage waterway health, floodplain management, drainage, natural process and land use to ensure the health and resilience of our catchments and the long-term health of the receiving waters of Moreton Bay.

Stormwater Management

Continue to manage stormwater and improve water quality throughout the region through regeneration and revegetation of waterways, new infrastructure works and upgrading existing infrastructure works.

Waste Management and Resource Recovery

Deliver effective waste management and resource recovery initiatives aimed at increasing landfill diversion and resource recovery.

Climate Change Mitigation Initiatives

Continue to undertake initiatives which reduce greenhouse gas emissions from our operations and assist residents and business operators to take similar steps in their homes and businesses.

Bushfire Hazard Management Program

Continue to deliver planned burns, manage fire trails and other projects related to fuel management, infrastructure, and risk assessment, to reduce the impact of bushfires and increase preparedness.





How we will know we succeeded

Our measures of success

- 01 Improved green infrastructure network, safely connecting natural areas and wildlife habitats.
- 02 Increased protected natural areas and land managed for wildlife habitats.
- 03 Improved quality of our local waterways.
- 04 Reduced greenhouse gas emissions from our operations.
- 05 Reduced bushfire risk on our managed land.
- 06 Increased waste is recycled and diverted from landfill.

What our communities can do to contribute

Community contribution

- Participate in conservation, restoration, revegetation and habitat enhancement opportunities, such as our Bushcare program, National Tree Day events or Land for Wildlife program.
- Visit one of our Environmental Centres and learn about the region's habitats and wildlife and explore the many natural experiences on offer across the region.
- Consider sustainable building designs that suit the local climate and character of your neighbourhood.
- Choose more sustainable goods including local products, when making purchases and maximise the value of the resources you use by repurposing wherever possible.
- Understand what items can be recycled through the services provided by us and others (for example REDcycle at local supermarkets) and responsibly dispose of waste.
- Reduce home energy and water consumption, consider purchasing energy from renewable sources.