

Species List for Regional Ecosystem 12.9-10.17

Mixed open gum forest

Description: Open-forest complex generally with a variety of stringybarks, grey gums, ironbarks and in some areas spotted gum. Canopy trees include *Eucalyptus siderophloia*, *E. propinqua* or *E. major*, *E. acmenoides* or *E. portuensis*, *E. carnea* and/or *E. microcorys* and/or *Corymbia citriodora*. Other species that may be present locally include *Corymbia intermedia*, *C. trachyphloia*, *Eucalyptus tereticornis*, *E. biturbinata*, *E. moluccana*, *E. longirostrata*, *E. fibrosa* subsp. *fibrosa* and *Angophora leiocarpa*. *Lophostemon confertus* or *Whipstick Lophostemon* (supplejack) often present in gullies and as a sub canopy or understorey tree. Mixed understorey of grasses, shrubs and ferns. Hills and ranges of Cainozoic and Mesozoic sediments.

Representative areas in the MBRC: Don Frahm Netball Memorial Park, Forgan Rd Park, Gibson Crt Res, Hansen Park, Hilltop Historical Park, Jan Sked Res, Kremzow Rd Res, Lowan St Res, One Mile Park, Raymont Res, Starling St Res, Yellow Button CI Res

Conservation status: *Vegetation Management Act (Qld) 1999* - not of concern (14.64 % remaining locally)

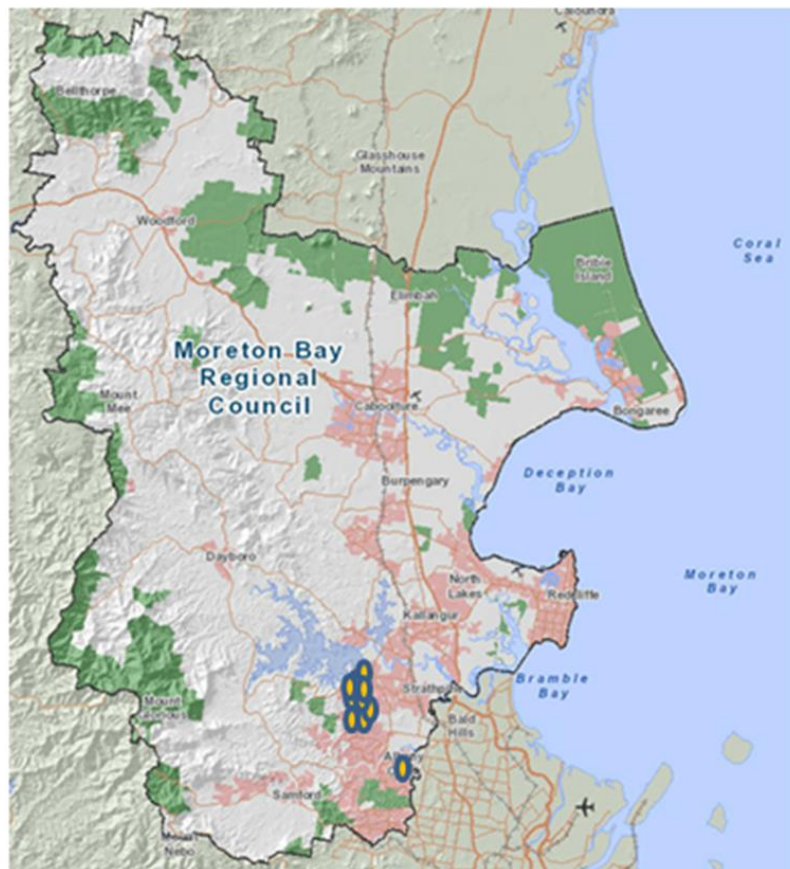


Figure 1: Representative areas of the MBRC where RE 12.9-10.17 can be found.

Scientific Name	Common Name	Description
Grasses		
<i>Digitaria parviflora</i>	Smallflower Finger Grass	
<i>Entolasia stricta</i>	Wiry panic	
<i>Ottochloa gracillima</i>	Shade Grass	
<i>Panicum effusum</i>	Hairy Panic	
<i>Themeda triandra</i>	Kangaroo Grass	
Herbs		
<i>Dianella caerulea</i>	Blue Fax Lily	
<i>Lomandra longifolia</i>	Long-leaved Mat Rush	
<i>Pseuderanthemum variable</i>	Love Flower	
<i>Viola hederacea</i>	Ivy-leaved Violet	
Sedges		
<i>Gahnia aspera</i>	Saw Sedge	
Shrubs		
<i>Breynia oblongifolia</i>	Coffee Brush	
<i>Dodonaea triquetra</i>	Large-leaved Hop Bush	
<i>Jacksonia scoparia</i>	Dogwood/Native Broom	
<i>Pultenaea villosa</i>	Hairy Bush Pea	
Tall Shrubs		
<i>Melaleuca salicina</i>	Willow Bottlebrush/Pink Tips	Koala habitat tree
<i>Notelaea longifolia</i>	Large Mock Olive	
Trees		
<i>Acacia aulacocarpa</i>	Hickory Wattle	
<i>Acacia complanata</i>	Flat Stemmed Wattle	
<i>Alphitonia excelsa</i>	Soap Tree/Red Ash	
<i>Angophora leiocarpa</i>	Rusty Apple	Koala habitat tree
<i>Corymbia citriodora</i>	Spotted Gum	Koala habitat tree
<i>Corymbia intermedia</i>	Pink Bloodwood	Koala habitat tree

<i>Corymbia trachyphloia</i>	Brown Bloodwood	Koala habitat tree
<i>Eucalyptus acmenoides</i>	White Mahogany	Koala habitat tree
<i>Eucalyptus biturbinata</i>	Grey Gum	Koala habitat tree
<i>Eucalyptus carnea</i>	White Mahogany	Koala habitat tree
<i>Eucalyptus fibrosa subsp. fibrosa</i>	Broad Leaved Red Ironbark	Koala habitat tree
<i>Eucalyptus longirostrata</i>	Grey gum	Koala habitat tree
<i>Eucalyptus major</i>	Grey Gum	Preferred koala food tree 
<i>Eucalyptus microcorys</i>	Tallowwood	Preferred Koala food tree 
<i>Eucalyptus moluccana</i>	Gum-topped box	Preferred koala food tree 
<i>Eucalyptus propinqua</i>	Grey Gum	Koala habitat tree
<i>Eucalyptus siderophloia</i>	Grey Iron Bark	Koala habitat tree
<i>Eucalyptus tereticornis</i>	Queensland Blue Gum	Preferred koala food tree 
<i>Lophostemon confertus</i>	Brush Box	Koala habitat tree
<i>Lophostemon suaveolens</i>	Swamp Box	Koala habitat tree
Vines		
<i>Cayratia clematidea</i>	Slender Grape	
<i>Cissus antarctica</i>	Kangaroo Vine	
<i>Eustrephus latifolius</i>	Wombat Berry	
<i>Pandorea pandorana</i>	Wonga Vine	
<i>Parsonsia straminea</i>	Monkey Rope	

This data is supplied by the Community & Environmental Services Division on the following conditions:-

Data is supplied from information contained in the Council's records which may have been furnished to the Council by other persons. Moreton Bay Regional Council gives no warranty or guarantee of any kind, expressed, implied, or statutory, to the correctness or accuracy of the data or the degree of compliance with any Council standards in this matter. Persons making decisions of any kind, including with financial or legal implications, must not rely upon the data for the purposes of determining whether any particular facts or circumstances exist and the Moreton Bay Regional Council (and its officers and agents) expressly disclaim responsibility for any loss or damage suffered as a result of placing reliance upon this data. Persons should satisfy themselves as to the accuracy and completeness of this information, and are encouraged to access other sources, such as the Department of Natural Resources and Mine's database or Wildlife Online, to obtain information that may not be available to Council.