

Species List for Regional Ecosystem 12.5.2

Blue Gum (*Eucalyptus tereticornis*) and Pink Bloodwood (*Corymbia intermedia*) grassy open- forest to woodland

Description: The dominant species in this ecosystem are Blue Gum (*Eucalyptus tereticornis*) and Pink Bloodwood (*Corymbia intermedia*). This ecosystem grows as a grassy woodland or open forest, it has been extensively cleared for horticulture and urban development in the region. Other species can include: Swamp Box (*Lophostemon suaveolens*), Rusty Apple (*Angophora leiocarpa*), White Mahogany / Yellow Stringybark (*Eucalyptus acmenoides*), Grey Ironbark (*Eucalyptus siderophloia*), Narrow Leaf Ironbark (*Eucalyptus crebra*), Moreton Bay Ash (*Corymbia tessellaris*) and Broad Leaved Paperbark (*Melaleuca quinquenervia*) on lower slopes.

Ecological values: Only 2% of the preclearing area remains. Important habitat for hollow nesting fauna (eg. gliders, possums and various bird species) and as a source of Koala food trees.

Representative areas in the MBRC: Chelsea St Environ Res, Dawn Rd Res, Donnybrook Foreshore, Mahaca Park, Sandstone Point Foreshore, Tacoma Park

Conservation status: *Vegetation Management Act (Qld) 1999* - endangered (2.65 % remaining locally)



Figure 1: RE 12.5.2 by Shannon Hudson, SEQ catchments, 2012, "BioCondition benchmark for regional ecosystem condition assessment Southeast Queensland Regional ecosystem: 12.5.2"

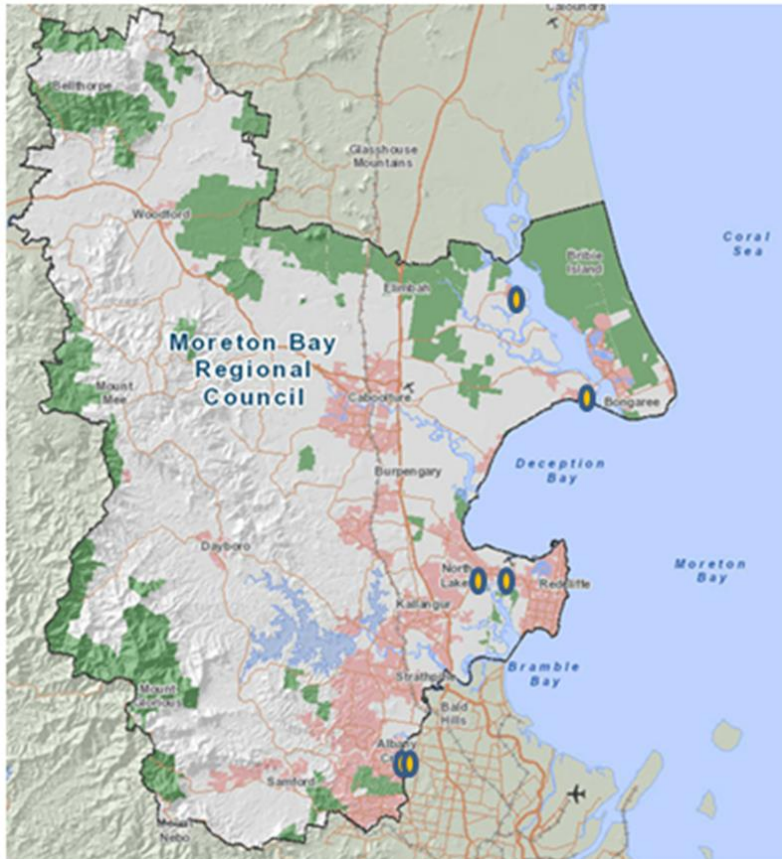




Figure 2: Representative Areas in MBRC where RE 12.5.2 can be found

| Scientific Name | Common Name | Description |
|------------------------------|------------------------|-------------|
| Grasses | | |
| <i>Cymbopogon refractus</i> | Barb Wire Grass | |
| <i>Entolasia stricta</i> | Wiry Panic | |
| <i>Heteropogon contortus</i> | | |
| <i>Imperata cylindrica</i> | Blady Grass | |
| <i>Themeda triandra</i> | Kangaroo Grass | |
| Shrubs | | |
| <i>Acacia fimbriata</i> | Brisbane Golden Wattle | |
| Tall Shrubs | | |
| <i>Acacia leiocalyx</i> | Early Black Wattle | |
| <i>Myrsine variabilis</i> | Muttonwood | |
| Terrestrial Ferns | | |
| <i>Adiantum hispidulum</i> | Rough Maidenhair | |

| Trees | | |
|--------------------------------|---------------------------------|---|
| <i>Acacia disparrima</i> | Hickory Wattle/ Ironbark Wattle | |
| <i>Alphitonia excelsa</i> | Soap Tree/Red Ash | |
| <i>Angophora leiocarpa</i> | Rusty Apple | Koala habitat tree |
| <i>Corymbia intermedia</i> | Pink Bloodwood | Koala habitat tree |
| <i>Corymbia tessellaris</i> | Moreton Bay Ash | Koala habitat tree |
| <i>Eucalyptus acmenoides</i> | White Mahogany | Koala habitat tree |
| <i>Eucalyptus crebra</i> | Narrow-leaved Ironbark | Koala habitat tree |
| <i>Eucalyptus exserta</i> | Queensland Peppermint | Koala habitat tree |
| <i>Eucalyptus propinqua</i> | Grey Gum | Preferred koala food tree  |
| <i>Eucalyptus siderophloia</i> | Grey Ironbark | Koala habitat tree |
| <i>Eucalyptus tereticornis</i> | Queensland Blue Gum | Preferred koala food tree  |
| <i>Lophostemon suaveolens</i> | Swamp Box | Koala habitat tree |
| <i>Melaleuca quinquenervia</i> | Broad Leaved Paperbark | Koala habitat tree |

This data is supplied by the Community & Environmental Services Division on the following conditions:-

Data is supplied from information contained in the Council's records which may have been furnished to the Council by other persons. Moreton Bay Regional Council gives no warranty or guarantee of any kind, expressed, implied, or statutory, to the correctness or accuracy of the data or the degree of compliance with any Council standards in this matter. Persons making decisions of any kind, including with financial or legal implications, must not rely upon the data for the purposes of determining whether any particular facts or circumstances exist and the Moreton Bay Regional Council (and its officers and agents) expressly disclaim responsibility for any loss or damage suffered as a result of placing reliance upon this data. Persons should satisfy themselves as to the accuracy and completeness of this information, and are encouraged to access other sources, such as the Department of Natural Resources and Mine's database or Wildlife Online, to obtain information that may not be available to Council.