

Species List for Regional Ecosystem 12.3.6

Coastal floodplain grassy Broadleaf Paperbark (*Melaleuca quinquenervia*), Blue Gum (*Eucalyptus tereticornis*) and Swamp Box (*Lophostemon suaveolens*) open forest to woodland

Description: This woodland occurs in coastal areas on alluvial plains. The major species are Broad Leaved Paperbark (*Melaleuca quinquenervia*), Blue Gum (*Eucalyptus tereticornis*) and Swamp Box (*Lophostemon suaveolens*). Occasionally present are Swamp She Oak (*Casuarina glauca*) and Pink Bloodwood (*Corymbia intermedia*).

Ecological values: Occurs on flat low lying coastal areas which are seasonally inundated. This ecosystem is important for its contribution to healthy waterways by helping to filter out contaminants and sediment. Species that can be found in this ecosystem include: Koalas, various frogs, Eastern Grey Kangaroos, Swamp Wallabies, Blue Tiger Butterflies, Squirrel Gliders and nectar and pollen eating birds such as Rainbow Lorikeets and Brown Honeyeaters. Important habitat to rare species such as the Wallum Froglet and Grey Goshawk.

Representative areas in the MBRC: Acacia Park, Balstrup Park, Barlow Res, Bribie Island NP, Bribie Pines Res, Casey Crt Park, Dorothy St Park, Freshwater Res, Government St Sportsgrounds, Jim Akers Park, John W Mott Res, Kingfisher Park, Korman Rd Park, Maine Terrace Park, Marshman Rd Park, Michel Dr Park (North), Regional Aquatic & Sports Ctr, Roseberry Place Park, Tacoma Park, Tim Heitmann Crt Park, Uhlmann Rd Park, Warren Cres Park

Conservation status: *Vegetation Management Act (Qld) 1999* - not of concern (25.58 % remaining locally)

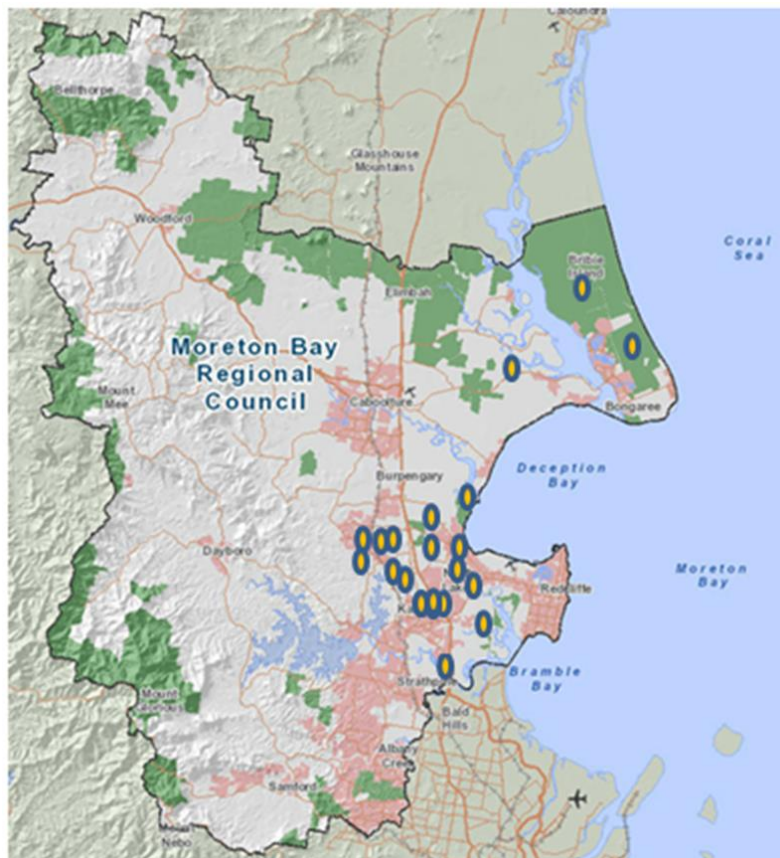



Figure 1: Representative Areas in the MBRC where RE 12.3.6 can be found

Scientific Name	Common Name	Description
Aquatic Herbs		
<i>Juncus usitatus</i>	Common Rush	
<i>Typha orientalis</i>	Bulrush	
Grasses		
<i>Capillipedium spicigerum</i>	Scented-top Grass	
<i>Imperata cylindrica</i>	Blady Grass	
<i>Ottochloa gracillima</i>	Gracefull Grass	
<i>Themeda triandra</i>	Kangaroo Grass	
Herbs		
<i>Baumea articulata</i>	Jointed Twigrush	
<i>Velleia spathulata</i>	Wild Pansy	
Sedges		
<i>Cyperus polystachyos</i>	Bunchy Sedge	
<i>Gahnia aspera</i>	Saw Sedge	
<i>Lepidosperma laterale</i>	Variable Swordsedge	
Shrubs		
<i>Acrotriche aggregata</i>	Ground Berry	
<i>Boronia polygalifolia</i>	Dwarf Boronia	
<i>Leptospermum polygalifolium</i>	Wild May	
Tall Shrubs		
<i>Acacia leiocalyx</i>	Early Black Wattle	
<i>Melaleuca salicina</i>	Willow Bottlebrush/Pink Tips	Koala habitat tree
Terrestrial Ferns		
<i>Lindsaea microphylla</i>	Lacy Wedge Fern	
<i>Pteridium esculentum</i>	Common Bracken	
Trees		
<i>Acacia disparrima</i>	Hickory Wattle	
<i>Allocasuarina littoralis</i>	Black She Oak	
<i>Alphitonia excelsa</i>	Soap Tree/Red Ash	
<i>Casuarina glauca</i>	Swamp She Oak	
<i>Corymbia intermedia</i>	Pink Bloodwood	Koala habitat tree

<i>Eucalyptus tereticornis</i>	Queensland Blue Gum	Preferred Koala food tree 
<i>Glochidion sumatranum</i>	Umbrella Cheese Tree/ Button Wood	
<i>Lophostemon suaveolens</i>	Swamp Box	Koala habitat tree
<i>Melaleuca quinquenervia</i>	Broad Leaved Paperbark	Koala habitat tree
Vines		
<i>Parsonsia latifolia</i>	Monkey Vine	
<i>Parsonsia straminea</i>	Monkey Rope	

This data is supplied by the Community & Environmental Services Division on the following conditions:-

Data is supplied from information contained in the Council's records which may have been furnished to the Council by other persons. Moreton Bay Regional Council gives no warranty or guarantee of any kind, expressed, implied, or statutory, to the correctness or accuracy of the data or the degree of compliance with any Council standards in this matter. Persons making decisions of any kind, including with financial or legal implications, must not rely upon the data for the purposes of determining whether any particular facts or circumstances exist and the Moreton Bay Regional Council (and its officers and agents) expressly disclaim responsibility for any loss or damage suffered as a result of placing reliance upon this data. Persons should satisfy themselves as to the accuracy and completeness of this information, and are encouraged to access other sources, such as the Department of Natural Resources and Mine's database or Wildlife Online, to obtain information that may not be available to Council.