

Species List for Regional Ecosystem 12.3.5

Floodplain Broadleaf Paperbark (*Melaleuca quinquenervia*) open forest to woodland

Description: Broad Leaved Paperbark (*Melaleuca quinquenervia*) forests are often commonly referred to as swamps. The composition of the understorey depends on the duration of waterlogging. Sedges and ferns such as Swamp Water Fern (*Blechnum indicum*) occur in wetter areas and grasses and shrubs in the drier zones. Other tree species that may be present as scattered individuals or clumps include: Swamp box (*Lophostemon suaveolens*), Swamp Mahogany (*Eucalyptus robusta*), Queensland Blue Gum (*E. tereticornis*), Pink Bloodwood (*Corymbia intermedia*) and Swamp She Oak (*Casuarina glauca*). In South East Queensland this ecosystem has been extensively cleared

Ecological values: Water can often lay in this ecosystem for a period of time, this makes it an excellent breeding place for frogs. In the Shire the Wallum Froglet (*Crinia tinnula*) has been found to inhabit this ecosystem. This frog is classified as vulnerable as it only occurs in restricted areas and habitats. This ecosystem is prone to weed invasion, especially from Groundsel (*Baccharis halimifolia*) which grows well in moist areas. Habitat also for nectar and pollen eating birds such as Rainbow Lorikeets and Brown Honeyeaters. Other fauna that can be seen in this ecosystem include: Eastern Grey Kangaroos, Swamp Wallabies, Blue Tiger Butterflies, Squirrel Gliders, Spotted Marsh Frogs and Sandy Gungans. Rare and threatened flora species that can be found include swamp orchids *Phaius australis*.

Representative areas in the MBRC: Beerburum East SF, Bestmann Rd - Beach Res, Bribie Island NP, Bullock Ck CP, Cathy Crt Park, Chelsea St Environ Res, Coventry Place Park, Currimundi Crt Park, Duffield Rd Park, Elm Crt Park, Flowers Rd Park, Freshwater NP, Greening Rd Park, Greygum Crt Park, Grigor St Park, Harrison Rd Park, Jensen Rd Park (East), John Bray Park, Kabi Circuit Park, Lagoon Ck Park, Lawnton Res, Lever Crt Park, Lyndhurst Terrace Park, Madeline Dr Park, Maryvale Rd Res, McNaught Rd - Environ Res, Ningi Ck CP, Old Toorbul Point Rd Park (South), Orpheus Place Park, Paisley Park, Pebble Beach Sportsgrounds, Peter Campbell Park, Regional Aquatic & Sports Ctr, Rob Akers Res, Shaun Parade Park (North), Three Ponds Place Park, Toorbul CP, Toovey St Park, Vanilla Avenue Park, Wallace St North Park, Warren Cres Park, Wattlebird Dr Park (South), Wattlebird St Res, Wendy Allison Park

Conservation status: *Vegetation Management Act (Qld) 1999* - not of concern (27.36 % remaining locally)



Figure 1: habit including *Melaleuca quinquenervia*, *Blechnum indicum* and *Alphitonia excelsa*



Figure 2: RE 12.3.5



Figure 3: RE 12.3.5 Floodplain Broadleaf Paperbark open forest to woodland

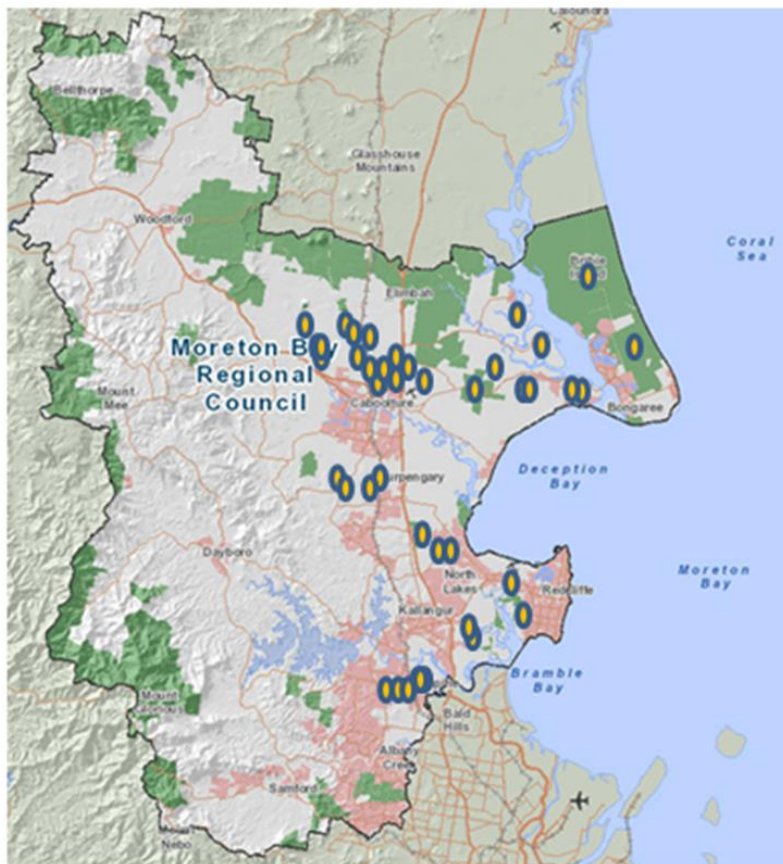


Figure 4: Representative Areas in the MBRC where RE 12.3.5 can be found

Scientific Name	Common Name	Description
Aquatic Herbs		
<i>Philydrum lanuginosum</i>	Frogmouth/Woolly Waterlily	
<i>Typha orientalis</i>	Bulrush	
Grasses		
<i>Bothriochloa decipiens</i>	Pitted Blue Grass	
<i>Leersia hexandra</i>	Swamp Rice Grass	
Herbs		
<i>Artanema fimbriata</i>	Koala Bells	
<i>Geranium solanderi</i>	Native Geranium	
<i>Goodenia bellidifolia</i>	Fan Flower	
<i>Persicaria strigosa</i>	A Smartweed	
<i>Velleia spathulata</i>	Wild Pansy	
<i>Wahlenbergia gracilis</i>	Australian Bluebells	
Palms		
<i>Livistona australis</i>	Cabbage Tree Palm	
Parasitic Vines		
<i>Cassytha filiformis</i>	Dodder Laurel	
Sedges		
<i>Baloskion pallens</i>	Didgergy Sticks	
<i>Baumea rubiginosa</i>	Soft Twigrush	
Shrubs		
<i>Melaleuca pachyphylla</i>	Wallum Bottlebrush	Koala habitat tree
<i>Melastoma malabathricum</i> <i>subsp. malabathricum</i>	Blue Tongue/Native Lasiandria	
<i>Pultenaea myrtoidea</i>	Myrtle Bush Pea	
Tall Shrubs		
<i>Melaleuca salicina</i>	Willow Bottlebrush/Pink Tips	
<i>Pittosporum undulatum</i>	Sweet Pittosporum/Mock Orange	
<i>Trema tomentosa</i>	Peach Leaf/Wild Peach	
Terrestrial Ferns		

<i>Blechnum indicum</i>	Bungwall Fern/Swamp Water Fern	
<i>Cheilanthes sieberi</i>	Mulga Fern	
Terrestrial Orchids		
<i>Geodorum densiflorum</i>	Pink Nodding Orchid	
<i>Phaius australis</i>		Listed as Endangered under the VM Act* and the EPBC Act^
<i>Phaius bernaysii</i>		
Trees		
<i>Casuarina glauca</i>	Swamp She-oak	
<i>Corymbia intermedia</i>	Pink Bloodwood	Koala habitat tree
<i>Eucalyptus robusta</i>	Swamp Mahogany	Preferred koala food tree 
<i>Eucalyptus tereticornis</i>	Queensland Blue Gum	Preferred koala food tree 
<i>Glochidion sumatranum</i>	Umbrella Cheese Tree/ Button Wood	
<i>Lophostemon suaveolens</i>	Swamp Box	Koala habitat tree
<i>Melaleuca quinquenervia</i>	Broad Leaved Paperbark	Koala habitat tree
Vines		
<i>Cassytha glabella</i>	Dodder Laurel	
<i>Cayratia clematidea</i>	Slender Grape	

*NC Act = Nature Conservation Act 2002

^EPBC Act = Environment Protection and Biodiversity Conservation Act 1999

Conservation Status codes

CD	Conservation Dependent
CE	Critically Endangered
E	Endangered
EW	Extinct in the Wild
I	Introduced
LC	Least Concern
NT	Near Threatened
V	Vulnerable
X	Extinct

This data is supplied by the Community & Environmental Services Division on the following conditions:-

Data is supplied from information contained in the Council's records which may have been furnished to the Council by other persons. Moreton Bay Regional Council gives no warranty or guarantee of any kind, expressed, implied, or statutory, to the correctness or accuracy of the data or the degree of compliance with any Council standards in this matter. Persons making decisions of any kind, including with financial or legal implications, must not rely upon the data for the purposes of determining whether any particular facts or circumstances exist and the Moreton Bay Regional Council (and its officers and agents) expressly disclaim responsibility for any loss or damage suffered as a result of placing reliance upon this data. Persons should satisfy themselves as to the accuracy and completeness of this information, and are encouraged to access other sources, such as the Department of Natural Resources and Mine's database or Wildlife Online, to obtain information that may not be available to Council.