

Species List for Regional Ecosystem 12.3.14a

Floodplain Scribbly Gum (*Eucalyptus racemosa* subsp. *racemosa*) woodland to open forest

Description: *Eucalyptus racemosa* woodland to open-forest. Other canopy species may include *Corymbia intermedia*, *C. gummifera*, *Eucalyptus latisinensis*, *E. tindaliae* and *Melaleuca quinquenervia*. Occurs on Quaternary alluvial plains in near coastal areas.

Ecological values: Habitat for rare and threatened flora species including *Eucalyptus conglomerata*.

Representative areas in the MBRC: Alexander Barr Sports Complex, Caboolture Carriage Club, Old Toorbul Point Rd Park (South)

Conservation status: *Vegetation Management Act (Qld) 1999* - of Concern



Figure 1: RE 12.3.14a Floodplain Scribbly Gum woodland to open forest

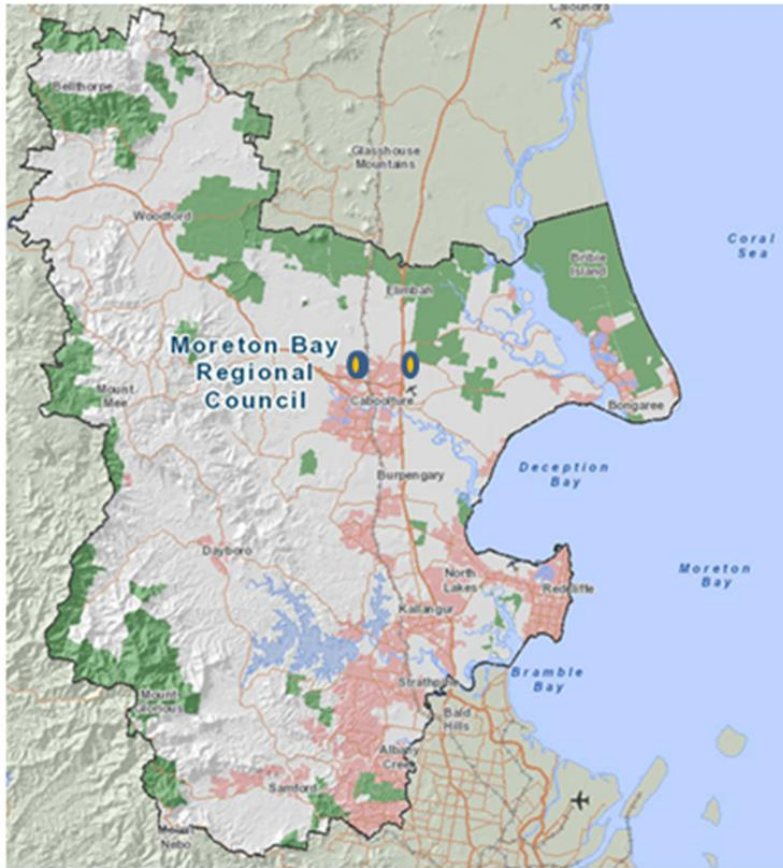


Figure 2: Representative Areas in the MBRC where RE 12.3.14a can be found

Scientific Name	Common Name	Description
Aquatic Herbs		
<i>Philydrum lanuginosum</i>	Frogsmouth/Woolly Waterlily	
Grasses		
<i>Hibbertia acicularis</i>		
<i>Imperata cylindrica</i>	Blady Grass	
<i>Themeda triandra</i>	Kangaroo Grass	
Herbs		
<i>Goodenia rotundifolia</i>	Star Goodenia	
<i>Patersonia glabrata</i>	Purple Flag Iris	
<i>Velleia spathulata</i>	Wild Pansy	

Sedges		
<i>Gahnia</i> sp.	Saw Sedge	
<i>Schoenus brevifolius</i>	Zig-zag Bog-rush	
Shrubs		
<i>Acacia complanata</i>	Flat Stemmed Wattle	
<i>Banksia aemula</i>	Wallum Banksia	
<i>Banksia robur</i>	Swamp Banksia	
<i>Boronia saffrolifera</i>	Safrole Boronia	
<i>Gompholobium pinnatum</i>	Poor Mans Gold	
<i>Grevillea leiophylla</i>	Wallum Grevillea	
<i>Hakea florulenta</i>	Scented Hakea	
<i>Hibbertia vestita</i>	Hairy Guinea Flower	
<i>Jacksonia scoparia</i>	Dogwood/Native Broom	
<i>Melaleuca nodosa</i>	Ball Honey Myrtle	Koala habitat tree
<i>Melaleuca pachyphylla</i>	Wallum Bottlebrush	Koala habitat tree
<i>Persoonia cornifolia</i>	Broad-leafed Geebung	
<i>Persoonia tenuifolia</i>		
<i>Persoonia virgata</i>	Small-leafed Geebung	
<i>Pimelea linifolia</i>	Slender Rice Flower	
<i>Pultenaea myrtilloides</i>	Myrtle Bush Pea	
<i>Pultenaea villosa</i>	Hairy Bush Pea	
Tall Shrubs		
<i>Acacia leiocalyx</i>	Early Black Wattle	
Trees		
<i>Allocasuarina littoralis</i>	Black She Oak	
<i>Alphitonia excelsa</i>	Soap Tree/Red Ash	
<i>Angophora leiocarpa</i>	Rusty Apple	Koala habitat tree
<i>Corymbia gummifera</i>	Red Bloodwood	Koala habitat tree
<i>Corymbia intermedia</i>	Pink Bloodwood	Koala habitat tree
<i>Eucalyptus latisinensis</i>	White Mahogany	Koala habitat tree

<i>Eucalyptus racemosa</i>	Scribbly Gum	Koala habitat tree
<i>Eucalyptus tindaliae</i>	Tindale's Stringybark	Koala habitat tree
<i>Glochidion ferdinandi</i>	Cheese Tree	
<i>Lophostemon suaveolens</i>	Swamp Box	Koala habitat tree
<i>Melaleuca quinquenervia</i>	Broad Leaved Paperbark	Koala habitat tree

This data is supplied by the Community & Environmental Services Division on the following conditions:-

Data is supplied from information contained in the Council's records which may have been furnished to the Council by other persons. Moreton Bay Regional Council gives no warranty or guarantee of any kind, expressed, implied, or statutory, to the correctness or accuracy of the data or the degree of compliance with any Council standards in this matter. Persons making decisions of any kind, including with financial or legal implications, must not rely upon the data for the purposes of determining whether any particular facts or circumstances exist and the Moreton Bay Regional Council (and its officers and agents) expressly disclaim responsibility for any loss or damage suffered as a result of placing reliance upon this data. Persons should satisfy themselves as to the accuracy and completeness of this information, and are encouraged to access other sources, such as the Department of Natural Resources and Mine's database or Wildlife Online, to obtain information that may not be available to Council.