

## Species List for Regional Ecosystem 12.11.2

### Tall open gum forest with rainforest understorey (wet sclerophyll)

**Description:** Tall to very tall open-forest with vine forest understorey ('wet sclerophyll'). Canopy species include *Eucalyptus saligna* or *E.grandis*, *E.microcorys*, *E.acmenoides* and *Lophostemon confertus*. Characteristic understorey species include *Caldcluvia paniculosa*, *Pittosporum undulatum*, *Synoum glandulosum* and *Cryptocarya glaucescens*.

**Ecological values:** Habitat for rare and threatened flora species including *Cyperus semifertilis*.

**Representative areas in the MBRC:** Bellthorpe FR 2, D'Aguiar NP, Fahey Rd Res 1, Fahey Rd Res 2, Harland Rd Res, Mount Glorious FR

**Conservation status:** *Vegetation Management Act (Qld) 1999* - not of concern (90.77 % remaining locally)

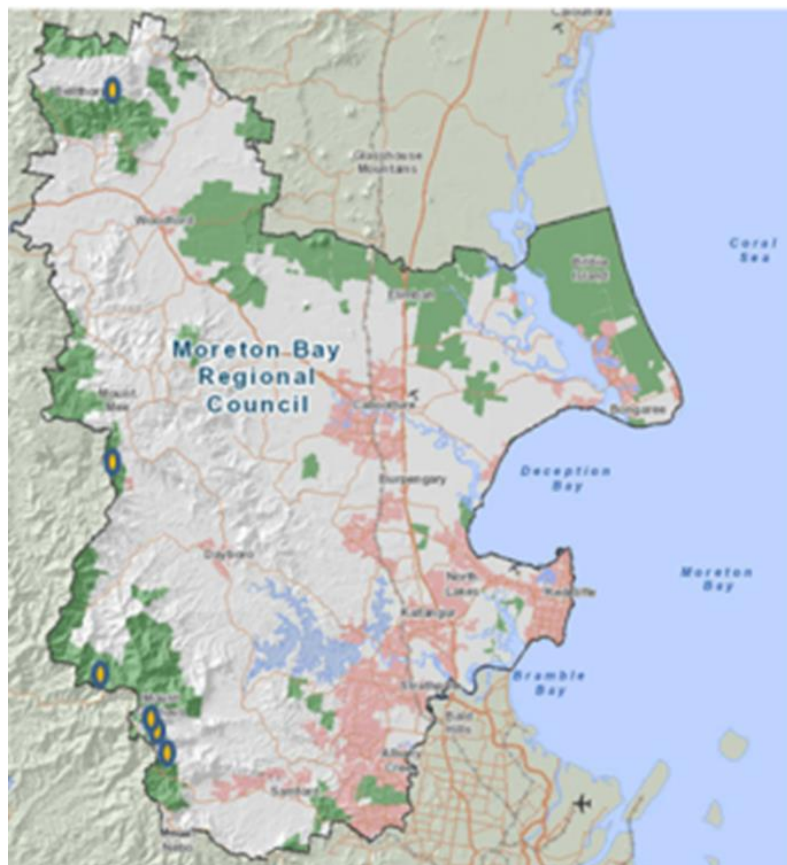


Figure 1: Representative areas in the MBRC where RE 12.11.2 can be found

Scientific Name	Common Name	Description
<b>Aquatic herbs</b>		
<i>Juncus</i> sp.		
<b>Epiphytic Ferns</b>		
<i>Asplenium polyodon</i>	Mare's Tail Fern	
<i>Davallia pyxidata</i>	Hare's Foot Fern	
<i>Drynaria rigidula</i>	Basket Fern	
<b>Epiphytic Orchids</b>		
<i>Dendrobium aemulum</i>	Box Orchid (Iron Bark Orchid)	
<i>Dendrobium speciosum</i>	King Orchid	
<i>Sarcocochilus falcatus</i>	Orange-blossom Orchid	
<b>Grasses</b>		
<i>Alloteropsis semialata</i>	Cockatoo Grass	
<i>Imperata cylindrica</i>	Blady Grass	
<i>Oplismenus aemulus</i>	Creeping Beard Heath	
<b>Herbs</b>		
<i>Alocasia brisbanensis</i>	Cunjevoi	
<i>Alpinia caerulea</i>	Native Ginger	
<i>Geranium homeanum</i>	Native Geranium	
<b>Orchids</b>		
<i>Dipodium punctatum</i>	Hyacinth Orchid	
<b>Palms</b>		
<i>Archontophoenix cunninghamiana</i>	Piccabeen Palm	
<b>Parasitic Shrubs</b>		
<i>Dendrophthoe vitellina</i>	A Mistletoe	
<i>Muellerina celastroides</i>	A Mistletoe	
<b>Parasitic Vines</b>		
<i>Cassytha filiformis</i>	Dodder Laurel	
<b>Sedges</b>		

<i>Cyperus semifertilis</i>	A Sedge	Listed as Vulnerable under the NC Act* and the EPBC Act^
<i>Gahnia aspera</i>	Saw Sedge	
<i>Lepidosperma laterale</i>	Variable Swordsedge	
<i>Scleria mackaviensis</i>	Scleria	
<b>Shrubs</b>		
<i>Alchornea ilicifolia</i>	Native Holly	
<i>Cordyline rubra</i>	Red-fruited Palm Lily	
<i>Eupomatia bennettii</i>	Small Bolwarra/Native Guava	
<i>Rubus rosifolius</i>	Native Raspberry	
<i>Sambucus australasica</i>	Native Elderberry	
<b>Tall Shrubs</b>		
<i>Acronychia suberosa</i>	Corky Acronychia	
<i>Archirhodomyrtus beckleri</i>	Rose Myrtle	
<i>Callicoma serratifolia</i>	Black wattle	
<i>Hibiscus heterophyllus</i>	Native Rosella	
<i>Pittosporum undulatum</i>	Sweet Pittosporum/Mock Orange	
<i>Synoum glandulosum</i>	Scentsless Rosewood	
<b>Terrestrial Ferns</b>		
<i>Adiantum silvaticum</i>	Small Maidenhair	
<i>Blechnum cartilagineum</i>	Gristle Fern	
<i>Calochlaena dubia</i>	False Bracken	
<i>Cyathea leichhardtiana</i>	Prickly Tree Fern	
<b>Terrestrial Orchids</b>		
<i>Sarcochilus ceciliae</i>	Fairy Bells	
<b>Trees</b>		
<i>Acacia maidenii</i>	Maiden's Wattle	
<i>Acmena smithii</i>	Creek Lilly Pilly	
<i>Ailanthus triphysa</i>	White Siris	
<i>Allocasuarina torulosa</i>	Rose Sheoak / Forest Sheoak	

<i>Anthocarapa nitidula</i>	Incense Cedar	
<i>Aphananthe philippinensis</i>	Native Elm/Axe Handle Tree	
<i>Brachychiton acerifolius</i>	Flame Tree	
<i>Caldcluvia paniculosa</i>	Soft Corkwood	
<i>Corymbia intermedia</i>	Pink Bloodwood	Koala habitat tree
<i>Cryptocarya erythroxylon</i>	Pigeonberry Ash	
<i>Cryptocarya glaucescens</i>	Jackwood/Silver Sycamore	
<i>Cryptocarya microneura</i>	Murrogun	
<i>Eucalyptus acmenoides</i>	White Mahogany	Koala habitat tree
<i>Eucalyptus grandis</i>	Flooded/Rose Gum	Koala habitat tree
<i>Eucalyptus microcorys</i>	Tallowwood	Preferred koala food tree 
<i>Eucalyptus saligna</i>	Sydney Blue Gum	Koala habitat tree
<i>Guioa semiglauca</i>	Wild Quince	
<i>Hymenosporum flavum</i>	Native Frangipani	
<i>Lophostemon confertus</i>	Brush Box	Koala habitat tree
<i>Macadamia integrifolia</i>	Queensland Nut	Listed as Vulnerable under the NC Act* and the EPBC Act^
<i>Schizomeria ovata</i>	Crabapple	
<b>Vines</b>		
<i>Billardiera scandens</i>	Sweet Apple Berry	
<i>Callerya megasperma</i>	Native Wisteria	
<i>Dioscorea transversa</i>	Native Yam	

\* NC Act = Nature Conservation Act 2002

^ EPBC Act = Environment Protection and Biodiversity Conservation Act 1999

#### Conservation Status codes

CD	Conservation Dependent
CE	Critically Endangered
E	Endangered
EW	Extinct in the Wild
I	Introduced
LC	Least Concern
NT	Near Threatened
V	Vulnerable
X	Extinct

This data is supplied by the Community & Environmental Services Division on the following conditions:-

Data is supplied from information contained in the Council's records which may have been furnished to the Council by other persons. Moreton Bay Regional Council gives no warranty or guarantee of any kind, expressed, implied, or statutory, to the correctness or accuracy of the data or the degree of compliance with any Council standards in this matter. Persons making decisions of any kind, including with financial or legal implications, must not rely upon the data for the purposes of determining whether any particular facts or circumstances exist and the Moreton Bay Regional Council (and its officers and agents) expressly disclaim responsibility for any loss or damage suffered as a result of placing reliance upon this data. Persons should satisfy themselves as to the accuracy and completeness of this information, and are encouraged to access other sources, such as the Department of Natural Resources and Mine's database or Wildlife Online, to obtain information that may not be available to Council.