

## Species List for Regional Ecosystem 12.11.10

### White Booyong (*Argyrodendron trifoliatum*) rainforest, sometimes with Hoop Pine (*Araucaria cunninghamii*)

**Description:** Notophyll and notophyll/microphyll vine forest ± *Araucaria cunninghamii*. Characteristic species include *Argyrodendron trifoliatum*, *Argyrodendron* sp. (Kin Kin W.D. Francis AQ 81198), *Choricarpia subargentea*, *Dissiliaria baloghioides*, *Brachychiton discolor*, *Beilschmiedia obtusifolia*, *Diospyros pentamera*, *Grevillea robusta*, *Gmelina leichhardtii* and *Ficus macrophylla* forma *macrophylla*. Occurs on Paleozoic and older moderately to strongly deformed and metamorphosed sediments and interbedded volcanics.

**Ecological values:** Habitat for rare and threatened flora including *Alyxia magnifolia*, *Arytera dictyoneura*, *Choricarpia subargentea*, *Fontainea rostrata*, *Graptophyllum reticulatum*, *Macadamia integrifolia*, *M. tetraphylla*, *Pouteria eerwah* and *Quassia bidwillii*.

**Representative areas in the MBRC:** Byron Ck Cons Pk, D'Aguilar FR, D'Aguilar NP, D'Aguilar NP (Recovery), Fahey Rd Res 1, Mount Glorious FR, Mount Mee SF, Wirth Rd Res

**Conservation status:** *Vegetation Management Act (Qld) 1999*- not of concern (21.28 % remaining locally)

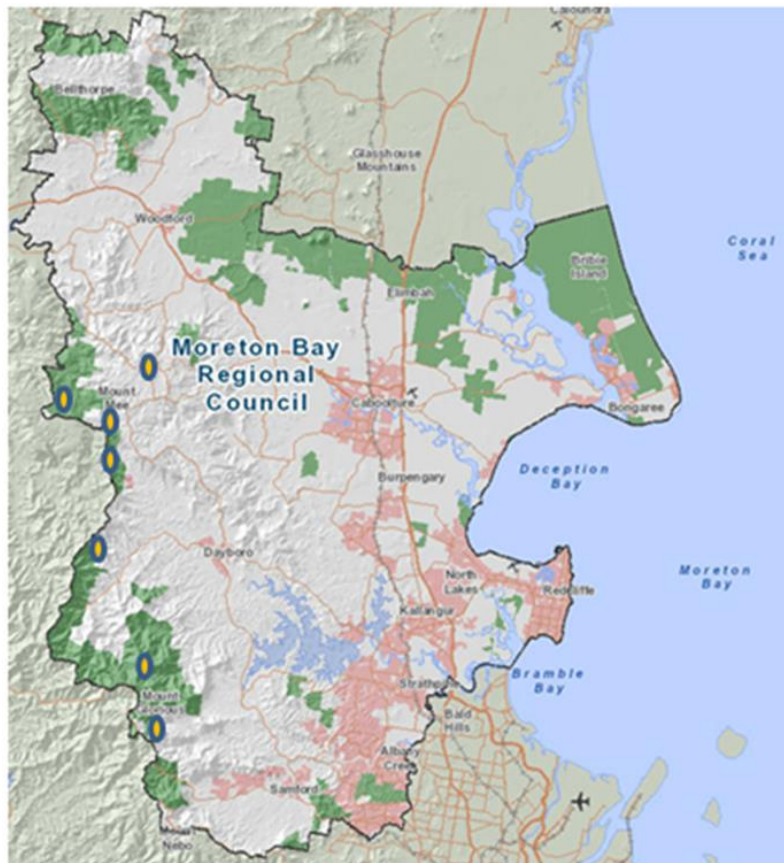


Figure 1: Representative areas in the MBRC where RE 12.11.10 can be found

Scientific Name	Common Name	Description
<b>Epiphytic Orchids</b>		
<i>Dendrobium speciosum</i>	King Orchid	
<b>Herbs</b>		
<i>Alpinia caerulea</i>	Native Ginger	
<i>Dianella caerulea</i>	Blue Fax Lily	
<b>Palms</b>		
<i>Archontophoenix cunninghamiana</i>	Piccabeen Palm	
<i>Linospadix monostachya</i>	Walking Stick Palm	
<b>Sedges</b>		
<i>Gahnia sieberiana</i>	Red Fruited Saw Sedge	
<b>Shrubs</b>		
<i>Alyxia ruscifolia</i>	Chain Fruit	
<i>Carissa ovata</i>	Currant Bush	
<i>Citrus australis</i>		
<i>Cordyline petiolaris</i>	Palm Lily	
<i>Cordyline rubra</i>	Red-fruited Palm Lily	
<i>Cryptocarya laevigata</i>	Glossy Laurel	
<b>Tall Shrubs</b>		
<i>Acronychia pauciflora</i>	Soft Acronychia	
<i>Capparis arborea</i>	Native Pomegranite	
<i>Macadamia ternifolia</i>	Maroochy Nut	Listed as Vulnerable under the NC Act* and the EPBC Act^
<b>Terrestrial Ferns</b>		
<i>Doodia</i> sp.		
<b>Trees</b>		
<i>Acacia melanoxylon</i>	Blackwood	
<i>Ailanthus triphysa</i>	White Siris	
<i>Alphitonia excelsa</i>	Soap Tree/Red Ash	

<i>Araucaria cunninghamii</i>	Hoop Pine	
<i>Argyrodendron trifoliolatum</i>	White Booyong	
<i>Beilschmiedia obtusifolia</i>	Blush Walnut	
<i>Brachychiton discolor</i>	Scrub Bottle tree	
<i>Choricarpia subargentea</i>	Giant Ironwood	
<i>Cryptocarya microneura</i>	Murrogun	
<i>Cryptocarya obovata</i>	White Walnut/Pepper Berry	
<i>Cryptocarya triplinervis</i> var. <i>pubens</i>	Hairy Brown Laurel	
<i>Diospyros pentamera</i>	Myrtle Ebony	
<i>Diploglottis australis</i>	Native Tamarind	
<i>Dissiliaria baloghioides</i>	Hauer, Lancewood, Currungal, Blackheart	
<i>Dysoxylum fraserianum</i>	Rosewood	
<i>Ficus macrophylla</i>	Moreton Bay Fig	
<i>Ficus obliqua</i>	Small-leaved Fig	
<i>Ficus watkinsiana</i>	Strangler's Fig/Nipple Fig	
<i>Flindersia schottiana</i>	Cudgerie / Bumpy Ash	
<i>Gmelina leichhardtii</i>	White Beech	
<i>Grevillea robusta</i>	Silky oak	
<i>Harpullia hillii</i>	Blunt-leaved Tulip	
<i>Mallotus philippensis</i>	Red Kamala	
<i>Neolitsea dealbata</i>	White Bolly Gum	
<i>Podocarpus elatus</i>	Brown or Plum Pine	
<i>Polyscias elegans</i>	Celerywood	
<i>Sarcomelicope simplicifolia</i>	Bauerella	
<i>Stenocarpus sinuatus</i>	Wheel of Fire	
<b>Vines</b>		
<i>Embelia australiana</i>	Embelia	
<i>Flagellaria indica</i>	Supple Jack	
<i>Geitonoplesium cymosum</i>	Scrambling Lily	
<i>Pandorea pandorana</i>	Wonga Vine	

\* NC Act = Nature Conservation Act 2002

^ EPBC Act = Environment Protection and Biodiversity Conservation Act 1999

Conservation Status codes

CD	Conservation Dependent
CE	Critically Endangered
E	Endangered
EW	Extinct in the Wild
I	Introduced
LC	Least Concern
NT	Near Threatened
V	Vulnerable
X	Extinct

This data is supplied by the Community & Environmental Services Division on the following conditions:-

Data is supplied from information contained in the Council's records which may have been furnished to the Council by other persons. Moreton Bay Regional Council gives no warranty or guarantee of any kind, expressed, implied, or statutory, to the correctness or accuracy of the data or the degree of compliance with any Council standards in this matter. Persons making decisions of any kind, including with financial or legal implications, must not rely upon the data for the purposes of determining whether any particular facts or circumstances exist and the Moreton Bay Regional Council (and its officers and agents) expressly disclaim responsibility for any loss or damage suffered as a result of placing reliance upon this data. Persons should satisfy themselves as to the accuracy and completeness of this information, and are encouraged to access other sources, such as the Department of Natural Resources and Mine's database or Wildlife Online, to obtain information that may not be available to Council.