

Species List for Regional Ecosystem 12.11.5

Mixed open gum forest, with Spotted Gum (*Corymbia citriodora*)

Description: This mixed tall open forest is usually dominated by Spotted Gum (*Corymbia citriodora*). The species composition can be very mixed and diverse – 12 tree species have been found in 0.1ha plots in some parts of the ecosystem. Brush Box (*Lophostemon confertus*) is often present in the understorey or in gullies. The mixed understorey can consist of grasses, shrubs and ferns. Scattered patches of Scribbly Gum (*Eucalyptus racemosa*) and Narrow Leaved Red Gum (*Eucalyptus seeana*) can also occur.

Ecological values: Habitat for rare and threatened flora species including *Eucalyptus henryi*. Animals that may be found in this ecosystem include: Swamp Wallabies, Red-necked Wallabies, Brushtail and Ringtail possums and Koalas.

Representative areas in the MBRC: Aitcheson Park, Annie Hedge Crt Res, Boland Crt Park, Brian Burke Res, Cedar Ck Rd Park 2, D'Aguilar NP, Dietz Crt Park 1, Dietz Crt Park 2, Dietz Crt Park 3, Dobsons Rd Res 2, Foggs Rd Res 2, Hughes Park, Mcdowalls Rd Res, Montego Crt Park, Mount Samson Rd Park 2, Reginald Draper Res, Samford CP, Saraband Dr Res 1, Walter Henderson Park

Conservation status: *Vegetation Management Act (Qld) 1999* - not of concern (46.34 % remaining locally)



Figure 1: RE 12.11.5 by Adrian Borsboom - in Queensland Government, 2012, 'BioCondition benchmark for regional ecosystem condition assessment Southeast Queensland Regional ecosystem:12.11.5'

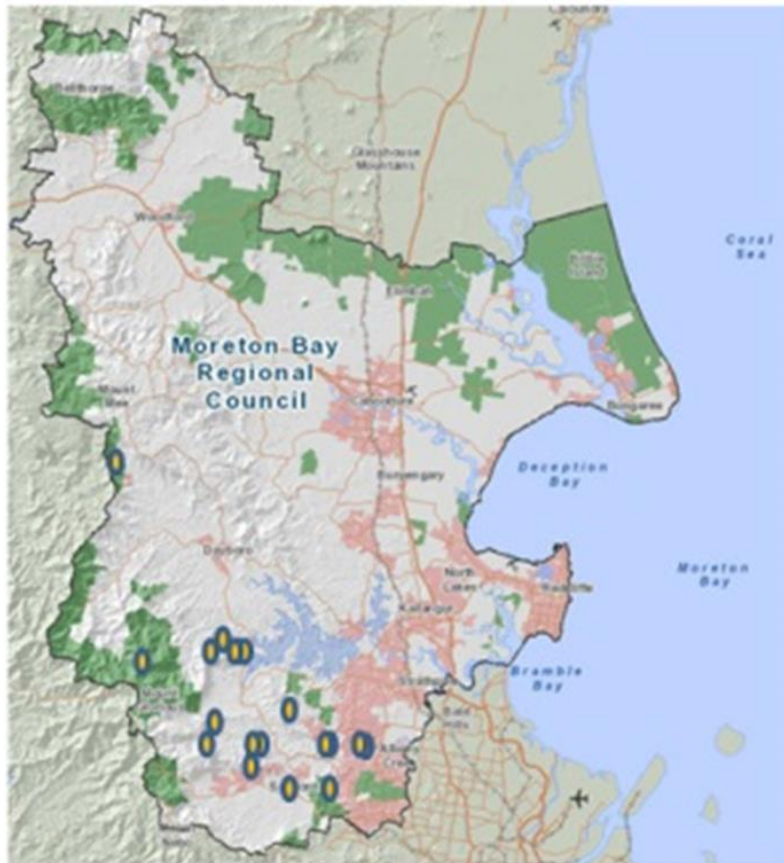


Figure 2: Representative areas in the MBRC where RE 12.11.5 can be found

Scientific Name	Common Name	Description
Aquatic Herbs		
<i>Philydrum lanuginosum</i>	Frogsmouth/Woolly Waterlily	
<i>Typha orientalis</i>	Bulrush	
Epiphytic Ferns		
<i>Asplenium australasicum</i>	Bird's Nest Fern	
<i>Platycerium superbum</i>	Staghorn	
Epiphytic Orchids		
<i>Cymbidium suave</i>	Sweet Cymbid	
<i>Dendrobium aemulum</i>	Box Orchid (Iron Bark Orchid)	
Grasses		
<i>Cymbopogon refractus</i>	Barb Wire Grass	
<i>Eremochloa bimaculata</i>	Poverty Grass	
<i>Imperata cylindrica</i>	Blady Grass	
<i>Themeda triandra</i>	Kangaroo Grass	

Herbs		
<i>Lomandra longifolia</i>	Long-leaved Mat Rush	
<i>Phyllanthus similis</i>	Phyllanthus	
<i>Thysanotus tuberosus</i>	Common Fringe Lily	
Palms		
<i>Archontophoenix cunninghamiana</i>	Piccabeen Palm	
Parasitic Shrubs		
<i>Amyema miquelii</i>	Box Mistletoe	
<i>Amylothea dictyphleba</i>	Mistletoe	
<i>Lysiana subfalacata</i>	Mistletoe	
Parasitic Vines		
<i>Cassytha filiformis</i>	Dodder Laurel	
Sedges		
<i>Cyperus polystachyos</i>	Bunchy Sedge	
<i>Lepidosperma laterale</i>	Variable Swordsedge	
<i>Schoenoplectus mucronatus</i>	Club Rush	
Shrubs		
<i>Acacia disparrima</i>	Southern salwood	
<i>Xanthorrhoea latifolia</i> subsp. <i>latifolia</i>	Grass Tree	
<i>Acacia concurrens</i>	Black Wattle	
<i>Macaranga tanarius</i>	Macaranga	
Terrestrial Ferns		
<i>Adiantum hispidulum</i>	Rough Maidenhair	
<i>Pteridium esculentum</i>	Common Bracken	
Terrestrial Orchids		
<i>Caladenia catenata</i>	White Fingers/White Finger Orchid	
<i>Geodorum densiflorum</i>	Pink Nodding Orchid	
Trees		
<i>Allocasuarina torulosa</i>	Forest She oak	
<i>Alphitonia excelsa</i>	Soap Tree/Red Ash	
<i>Corymbia citriodora</i>	Spotted Gum	Koala habitat tree
<i>Corymbia intermedia</i>	Pink Bloodwood	Koala habitat tree
<i>Eucalyptus carnea</i>	White Mahogany	Koala habitat tree

<i>Eucalyptus crebra</i>	Narrow-leaved Ironbark	Koala habitat tree
<i>Eucalyptus henryi</i>		Koala habitat tree
<i>Eucalyptus racemosa</i>	Scribbly Gum	Koala habitat tree
<i>Eucalyptus seeana</i>	Narrow Leaved Red Gum	Koala habitat tree
<i>Eucalyptus siderophloia</i>	Grey Ironbark	Koala habitat tree
<i>Eucalyptus tindaliae</i>	White Stringybark	Koala habitat tree
<i>Lophostemon confertus</i>	Brush Box	Koala habitat tree
<i>Lophostemon suaveolens</i>	Swamp box	Koala habitat tree
Vines		
<i>Cissus antarctica</i>	Kangaroo Vine	
<i>Dioscorea transversa</i>	Native Yam	
<i>Pandorea pandorana</i>	Wonga Vine	
<i>Tinospora tinosporoides</i>	Arrow-head Vine	Listed as Vulnerable under the NC Act* and the EPBC Act^

* NC Act = Nature Conservation Act 2002

^ EPBC Act = Environment Protection and Biodiversity Conservation Act 1999

Conservation Status codes

CD	Conservation Dependent
CE	Critically Endangered
E	Endangered
EW	Extinct in the Wild
LC	Least Concern
NT	Near Threatened
R	Rare
V	Vulnerable
X	Extinct

This data is supplied by the Community & Environmental Services Division on the following conditions:-

Data is supplied from information contained in the Council's records which may have been furnished to the Council by other persons. Moreton Bay Regional Council gives no warranty or guarantee of any kind, expressed, implied, or statutory, to the correctness or accuracy of the data or the degree of compliance with any Council standards in this matter. Persons making decisions of any kind, including with financial or legal implications, must not rely upon the data for the purposes of determining whether any particular facts or circumstances exist and the Moreton Bay Regional Council (and its officers and agents) expressly disclaim responsibility for any loss or damage suffered as a result of placing reliance upon this data. Persons should satisfy themselves as to the accuracy and completeness of this information, and are encouraged to access other sources, such as the Department of Natural Resources and Mine's database or Wildlife Online, to obtain information that may not be available to Council.