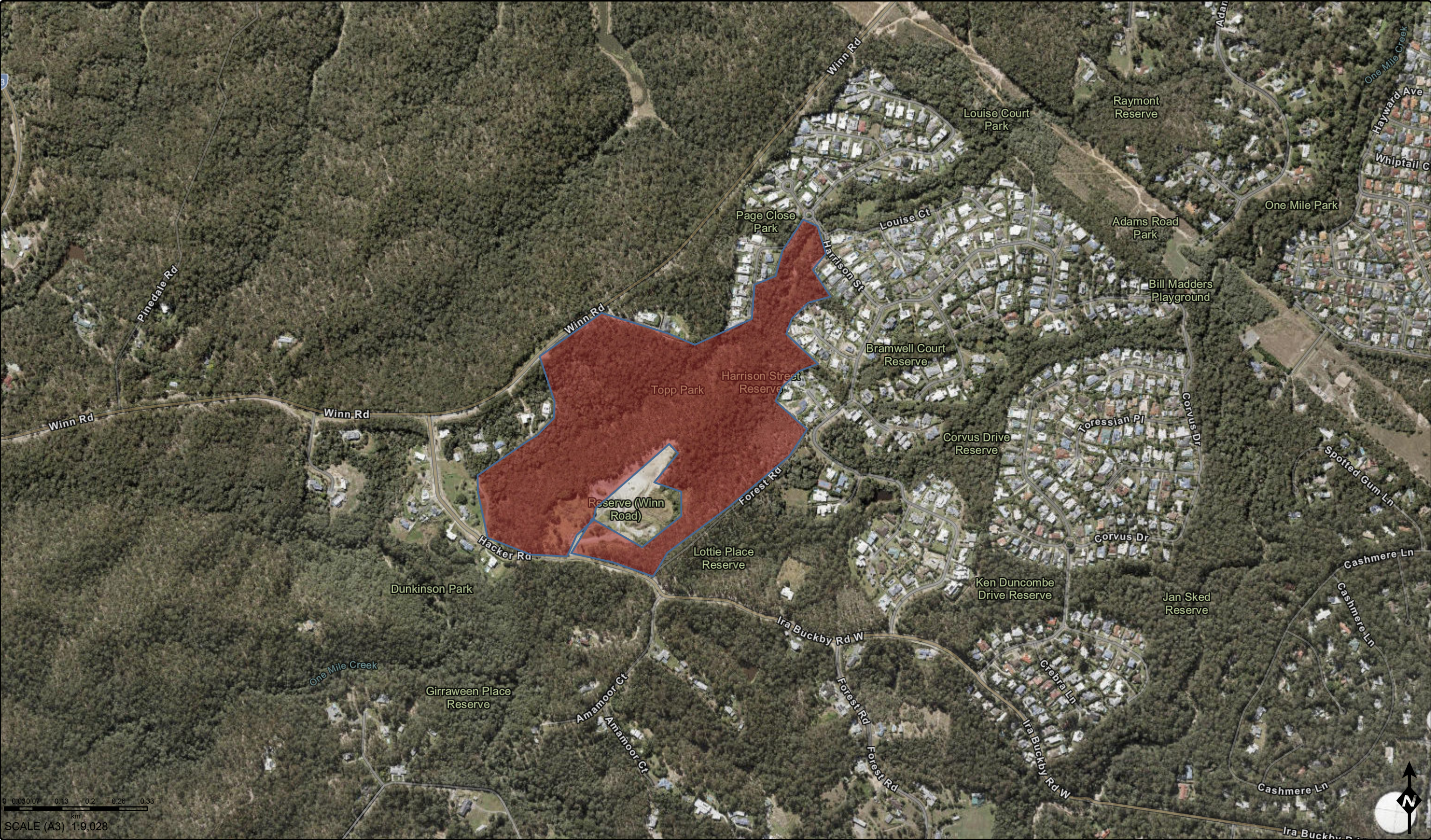


Cashmere - Topp Park Complex - Proposed Burn Area

15 November 2023



Moreton Bay Regional Council
PO Box 159,
CABOOLTURE QLD 4510
Ph: (07) 3205 0555
Email: gis@moretonbay.qld.gov.au
Web: www.moretonbay.qld.gov.au

Legend



Local government

Copyright Moreton Bay City Council and The Queensland Government. Moreton Bay City Council supplies this map under the following conditions:- Mapping details are supplied from information contained in the Council's records which may have been furnished to the Council by other persons. Moreton Bay City Council gives no warranty or guarantee of any kind, expressed, implied, or statutory, to the correctness or accuracy of the map details or the degree of compliance with any Council standards in this matter. Persons making decisions with financial or legal implications must not rely upon the map details shown on this plan for the purpose of determining whether any particular facts or circumstances exist and the Moreton Bay City Council (and its officers and agents) expressly disclaims responsibility for any loss or damage suffered as a result of placing reliance upon this information.