

JOINING THE  
QUEENSLAND

# SES

SES





## Mate helping Mate

### **The Queensland State Emergency Service**

The Queensland State Emergency Service (SES) is part of a national organisation of volunteers.

“Mate helping Mate,  
Neighbour helping Neighbour,  
People helping People”.

Each year they receive thousands of calls for assistance. State and Local Governments work together to support SES volunteers who provide emergency services to their local communities.



## Neighbour helping Neighbour



### **What is an SES volunteer?**

SES volunteers encourage members of the community to help themselves so SES can undertake what is their primary purpose ... to help those who are most vulnerable. They are well respected within their communities and experience the satisfaction of helping their communities and working as part of a skilled team.

SES Groups have approved functions based on their local hazards and therefore may not be trained in or perform all functions eg. vertical or cliff rescue is only approved where there are cliffs or terrain where SES is the primary responder. Many SES activities require a level of fitness and it is each volunteer's responsibility to ensure that they have the appropriate fitness level to undertake the task. Volunteers will be required to attend regular training at their SES Group to retain their skills, and work in a team environment while supporting the community in times of emergency and disaster.





## Recruitment and selection

It is important that the SES maintains viable membership numbers to enable the performance of allocated roles and responsibilities, including disaster or emergency response arrangements.

Membership requirements include:

- Prospective members will need to meet a level of fitness to be able to perform many of the functions.
- Relevant application forms are completed and approved.
- A criminal history check is conducted.
- Induction and basic training is completed.
- A probation period is served.

Unpaid volunteers run local recruitment sessions. Depending on the Group, the frequency of information nights and inductions may vary and some may be held infrequently, resulting in possible delays in the membership process.

## What can you offer?

Being a SES volunteer means that you will not necessarily be activated on a regular basis, however your assistance will be critical when needed. If you have any expertise outside of the listed functions that you think could be useful and would like to utilise as a member, please advise your SES Executive.

Examples of personal expertise include:

- Stock Management
- Grant Development
- Public Relations
- Community Care
- Fundraising
- Marketing
- Office/ Administration





Neighbour helping Neighbour

### Roles and training

The SES offers a number of roles including training based on the functional requirements of the Group. Training includes accredited modules that lead to a Certificate (III) Public Safety (SES Rescue).

These roles include:

- Community Member
- Operations Member
- Senior Operations Member

To retain membership volunteers are expected to regularly attend training and assist during activations where possible.



People helping People



### Training

SES volunteers receive training in a range of disciplines, providing them with real life skills which are used during emergencies, and knowledge that stays with them throughout their life.

### Mates

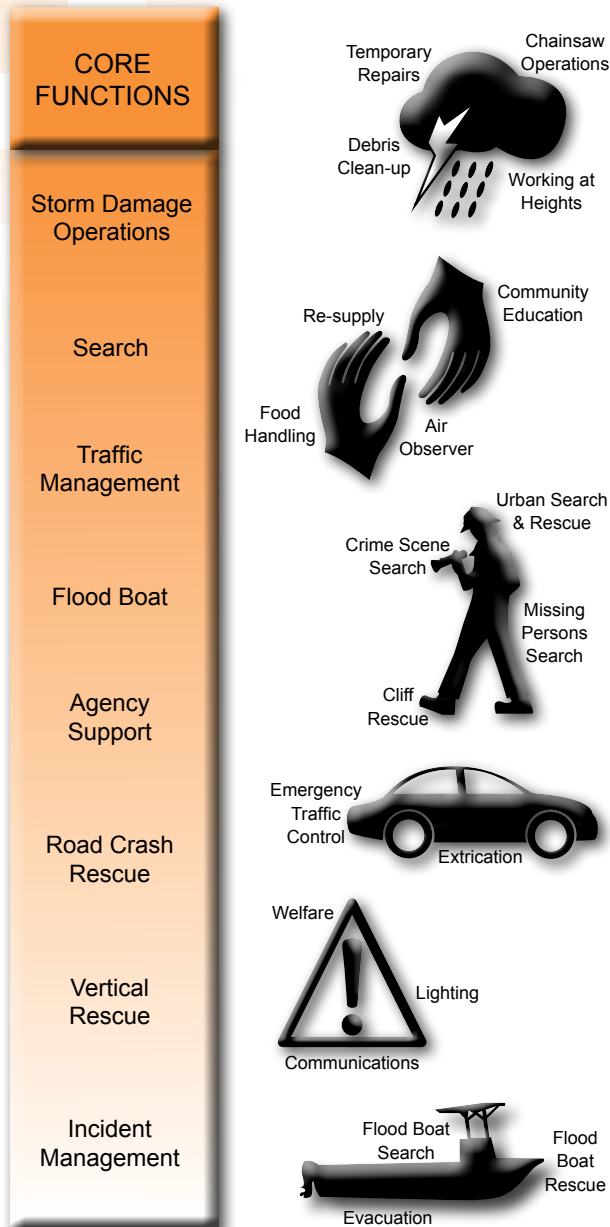
As a SES volunteer you will be working together with a great group of like-minded people. Your Group will train and respond to emergencies together, and the experiences you share will lay the foundations for life-long friendships.

### Challenge

The SES has a role for people with a broad range of talents and expertise. Many of these functions require a high level of fitness. Roles of administration, communications, stores and welfare do not necessarily require this level of fitness, however these non-operational positions will only be available dependent on the existing membership of the Group.



## SES Functions and Activities



## Deployments

Universally recognised for their work during severe weather events, the SES play a vital role in providing operational responses to massive flood, storm and cyclone events throughout Queensland, and deploy throughout the state and sometimes nationally when local emergency response is exhausted.

SES members are trained to provide a range of emergency services to their communities including search and rescue, storm damage and resupply operations, incident management, road crash rescue and vertical rescue.





People helping People



Mate helping Mate

### Queensland Fire and Emergency Services

QFES is unique in Australia. It provides services covering all phases of emergency and disaster management - Prevention, Preparedness, Response and Recovery.

In partnership with QFES, the SES forms a part of Emergency Service Volunteers which is responsible for providing support and funding assistance to a number of emergency volunteer organisations:

- Australian Volunteer Coast Guard Association;
- Queensland State Emergency Service;
- Royal Life Saving Society Australia;
- Rural Fire Service Queensland;
- Surf Life Saving Queensland; and
- Volunteer Marine Rescue Association of Queensland.

### In an emergency

If you need the assistance of the State Emergency Service in **non-life threatening** emergency situations during floods and storms, you can:

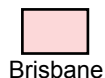
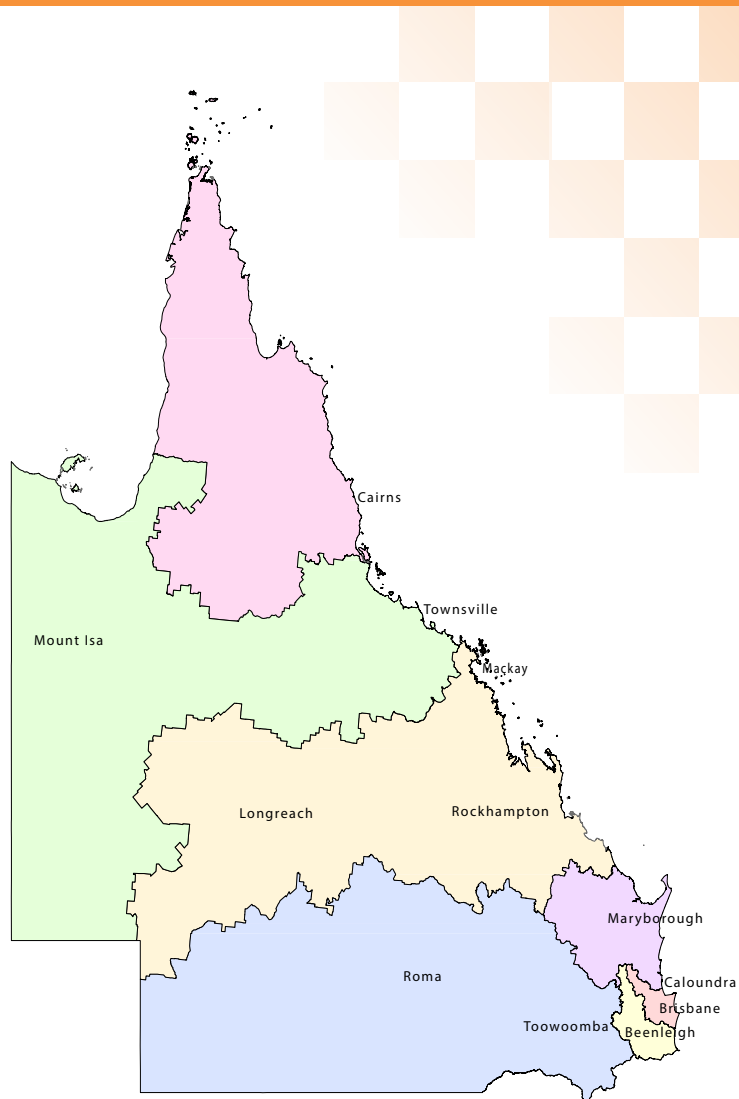
- Call 132 500; or
- Lodge a request on: [www.132500.qld.gov.au](http://www.132500.qld.gov.au); or
- Lodge a request on our 132 500 SES Assistance App available for both Apple and Android devices.



**FLOOD STORM  
EMERGENCY**

**132 500**

[www.132500.qld.gov.au](http://www.132500.qld.gov.au)  
SES Assistance Mobile App



Brisbane



Central



Far Northern



North Coast



Northern



South Eastern



South Western

To join or for further information,  
contact us as per below.



© State of Queensland (Queensland Fire and Emergency Services) 2016  
All Queensland Fire and Emergency Services material in this document – except any material protected by a trademark, and unless otherwise noted – is licensed under a Creative Commons Attribution 4.0 licence

This booklet may contain images of indigenous people, now deceased.

[www.ses.qld.gov.au](http://www.ses.qld.gov.au)

