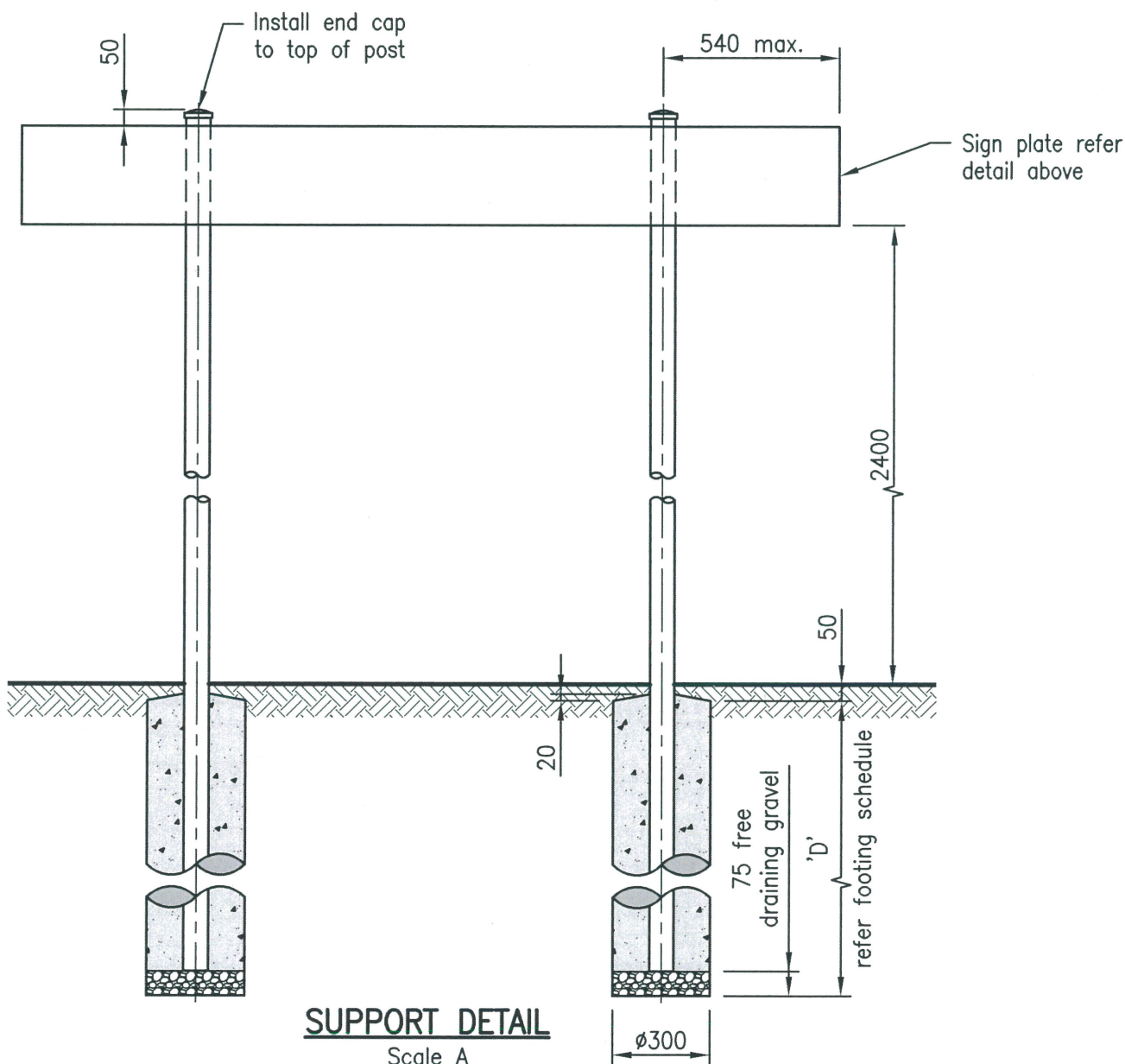


PLATE DETAIL
Scale B

Text style Arial Bold
black text



SUPPORT DETAIL
Scale A

FOOTING SCHEDULE

STRENGTH CATEGORY (Note 2)		'D' FOOTING DEPTH
Cohesive clay soils	Firm to stiff	800
	Very stiff	600
Cohesionless sand soils	Loose to medium	1200
	Dense	900

NOTES:

1. Sign posts – 76.1 OD x 3.2mm thick CHS. Hot dip galvanise after manufacture and powder coat Woodland Grey (CMYK 45 35 42 67, RGB 75 76 70, HEX 4B 4C 46)
2. Selection of the foundation type and strength category shall be approved by the project administrator.
3. Concrete shall be N32/20 poured directly against augured hole and mechanically vibrated full depth.
4. Sign face to be 1.6mm marine grade aluminium 521 on all faces. All corners/edges to be free of burrs.
5. Sign faces to be attached using approved anti-theft bolts and Nylon insert lock nuts. Bolts Class 8.8, nuts Class 8 bolts to AS/NZ 1252.
6. Apply 3M anti-graffiti clear film or Council approved equivalent to finished surface of panel.
7. Ensure sign is installed vertical/plumb and sign panels are horizontal (level).
8. The signs are to have a black text on a reflective white background.
9. The MBRC logo is to be a full colour logo and is to be in accordance with approved design.
10. Refer to project drawings for sign location and any additional works.
11. Use for lower order roads, local collector, access roads and rural roads.
12. All sizes are in millimetres unless otherwise noted.

REVISIONS		INIT	DATE	SCALES		Drawn	BW	Date	07/16	
E				A	0mm 100 200 300 400	1:20	Coordinator	PP	Date	07/16
D				B	0mm 50 100 150 200	1:10	AUTHORISED 07/07/16 Manager Integrated Transport Planning & Design RPEQ 6872			
C										
B										
A										
ORIGINAL ISSUE		BW	07/16							

SUBURB SIGNAGE
HOOP STYLE SUBURB SIGN
LOW ORDER TYPE 2
(LONG SUBURB SIGN)



DRG No. **SI-6061**

ORIGINAL SIZE **A3**

REVISION