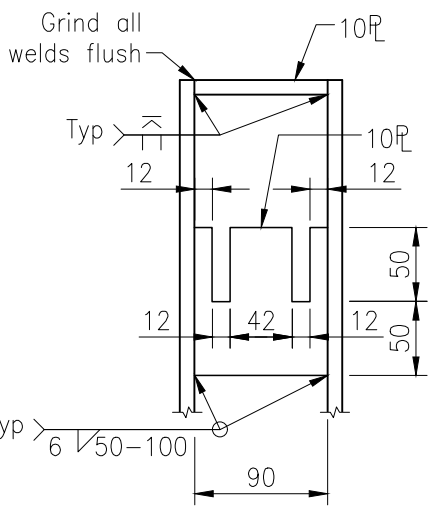
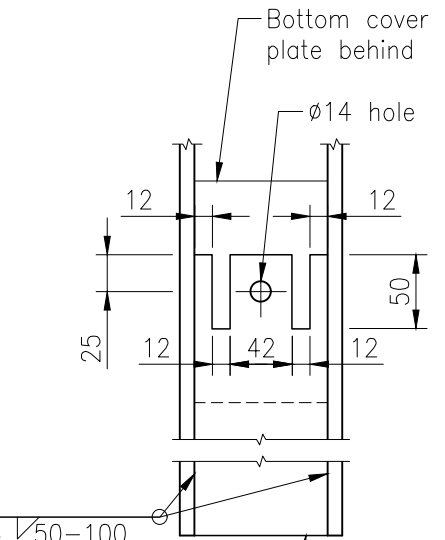


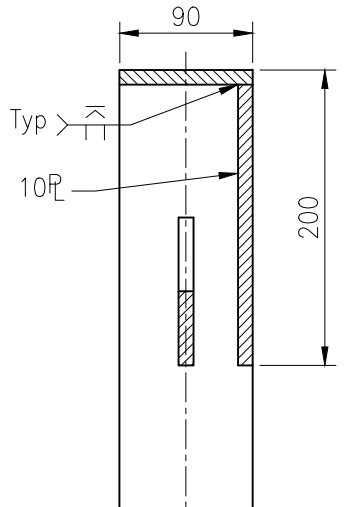
END POST ELEVATION
Scale A



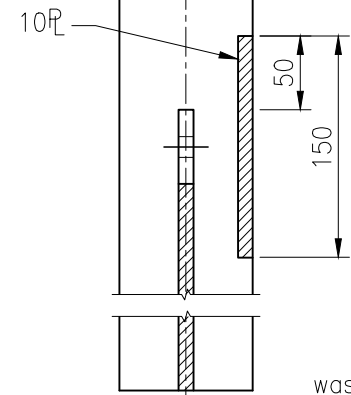
DETAIL A
Scale B



DETAIL B
Scale B

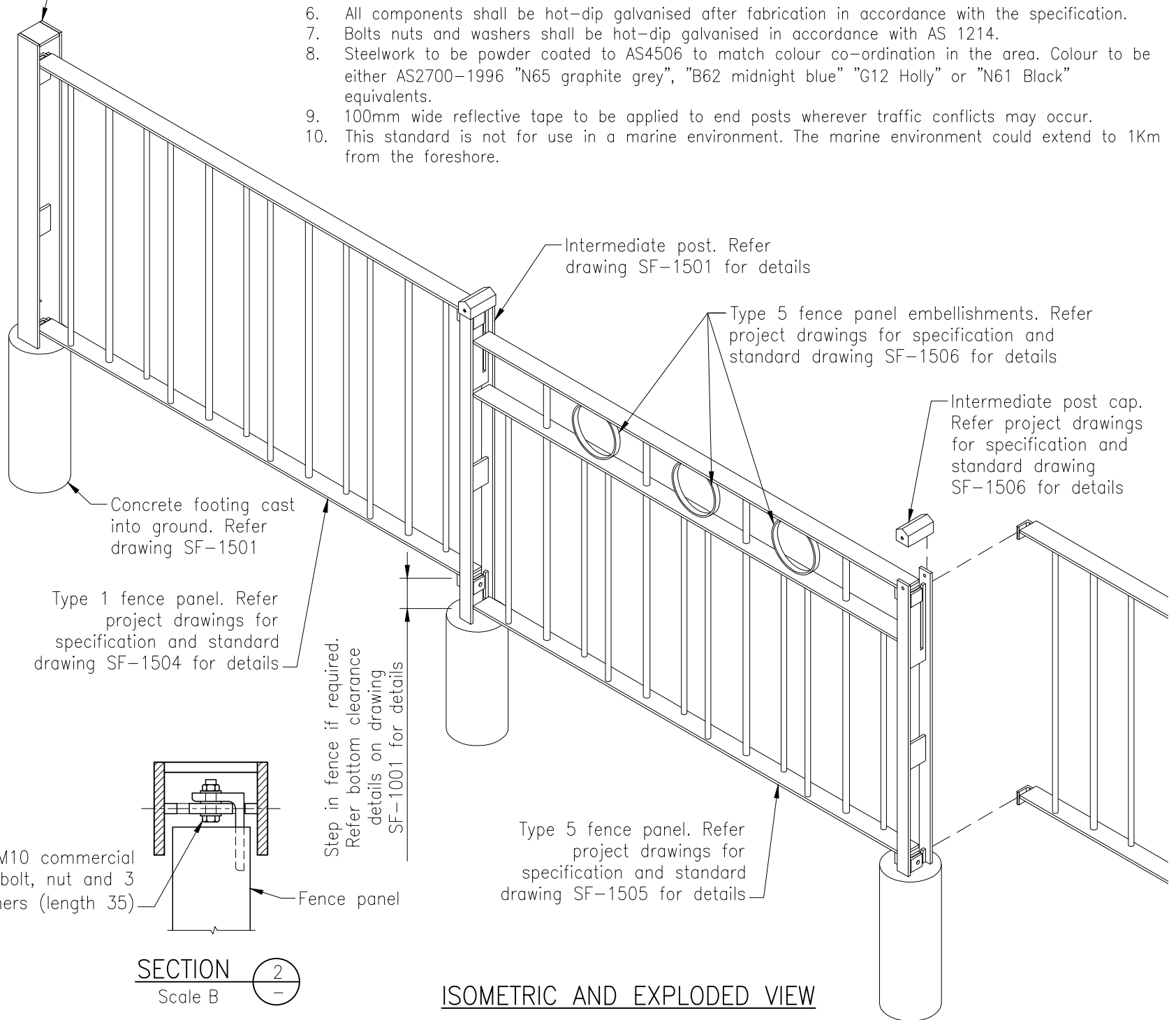


SECTION 1
Scale B



SECTION 2
Scale B

End post. Detailed on this drawing



ISOMETRIC AND EXPLODED VIEW

NOTES:

1. Steel plate shall be grade 250 to AS 3678, steel sections shall be grade 300 to AS 3679.1.
2. Commercial bolts and screws shall conform to AS 1111, plain nuts shall conform to AS 1112, black steel washers (normal and large series) shall conform to AS 1237.
3. All welded connections shall be 6mm fillet welds if no symbol shown, weld category shall be SP in accordance with AS 1554 part 1, welding symbols are to AS 1101 part 3.
4. Edges to be protective treated shall be rounded to a radius of 1.5mm unless specified otherwise.
5. All dimensions are base metal thickness.
6. All components shall be hot-dip galvanised after fabrication in accordance with the specification.
7. Bolts nuts and washers shall be hot-dip galvanised in accordance with AS 1214.
8. Steelwork to be powder coated to AS4506 to match colour co-ordination in the area. Colour to be either AS2700-1996 "N65 graphite grey", "B62 midnight blue" "G12 Holly" or "N61 Black" equivalents.
9. 100mm wide reflective tape to be applied to end posts wherever traffic conflicts may occur.
10. This standard is not for use in a marine environment. The marine environment could extend to 1Km from the foreshore.

REVISIONS	INIT	DATE
E		
D		
C		
B		
A	RH	11/16
	BW	09/15

SCALES
A 0mm 50 100 150 200 1:20
B 0mm 25 50 75 100 1:10

Drawn		Date	
Team Leader		Date	
Coordinator		Date	
AUTHORISED SYD JERRAM 07/07/16 Manager Engineering RPEQ			

**PEDESTRIAN FENCE - TYPE 1 AND 5
END POST DETAILS
(CAST INTO CONCRETE FOOTING)**

Moreton Bay
Regional Council

DRG No. **SF-1500**

ORIGINAL SIZE **A3** REVISION **A**