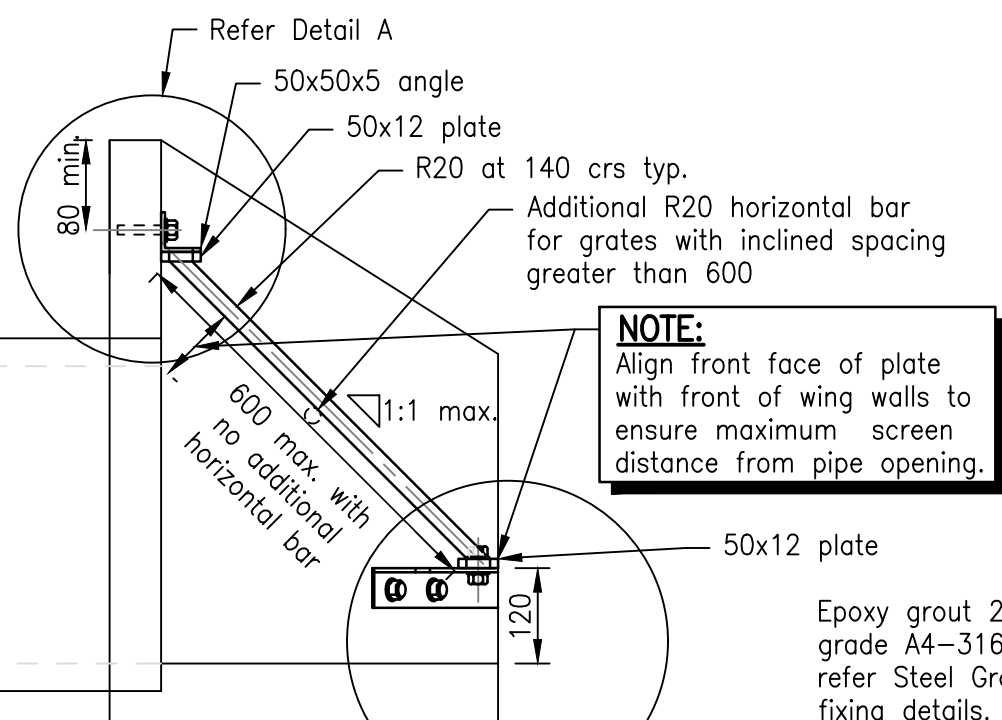
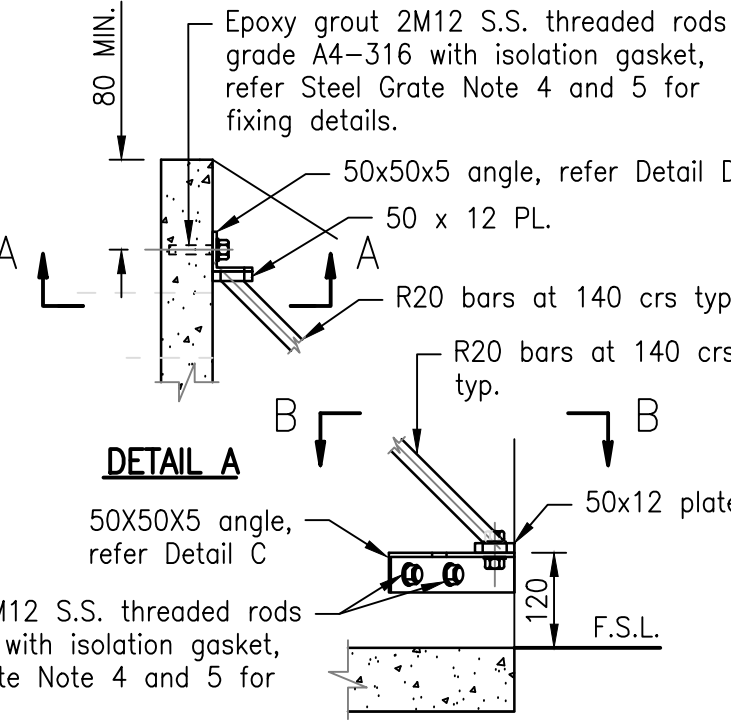


ELEVATION



SECTION



DETAIL A

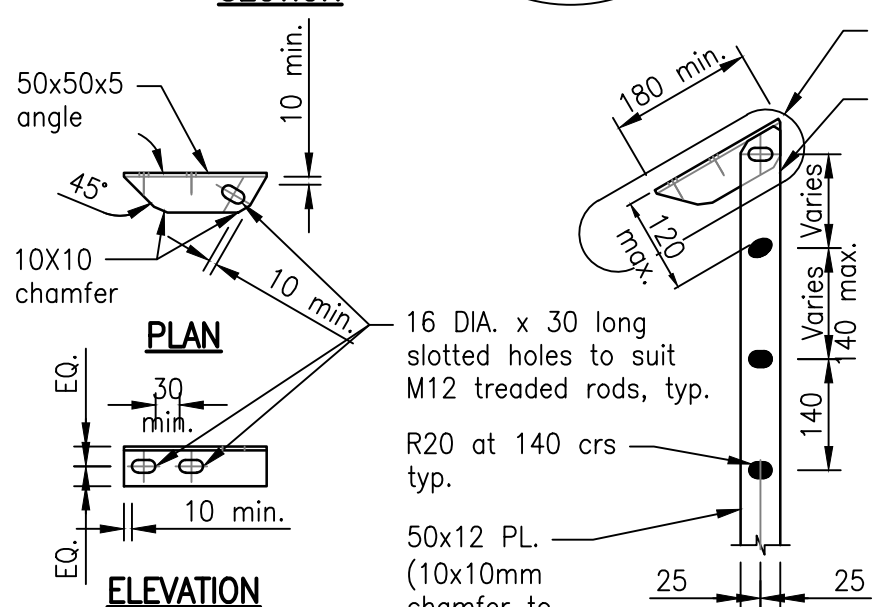
DETAIL B

NOTE:
Overall dimension of safety grate to suit individual headwalls.

NOTE:
For new headwalls (DN375 to DN525 pipes only) use one size larger than the pipe diameter.

RODS EMBEDMENT TABLE

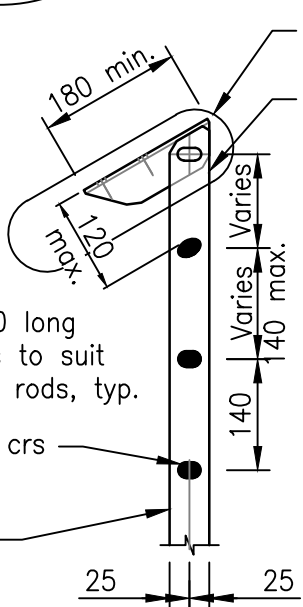
CONCRETE THICKNESS (mm)	MINIMUM EMBEDMENT (mm)
100	80
85	75
75	65
65	50



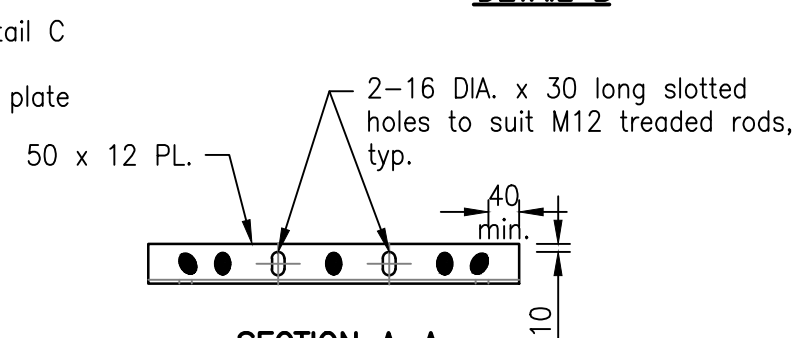
PLAN

ELEVATION

DETAIL C



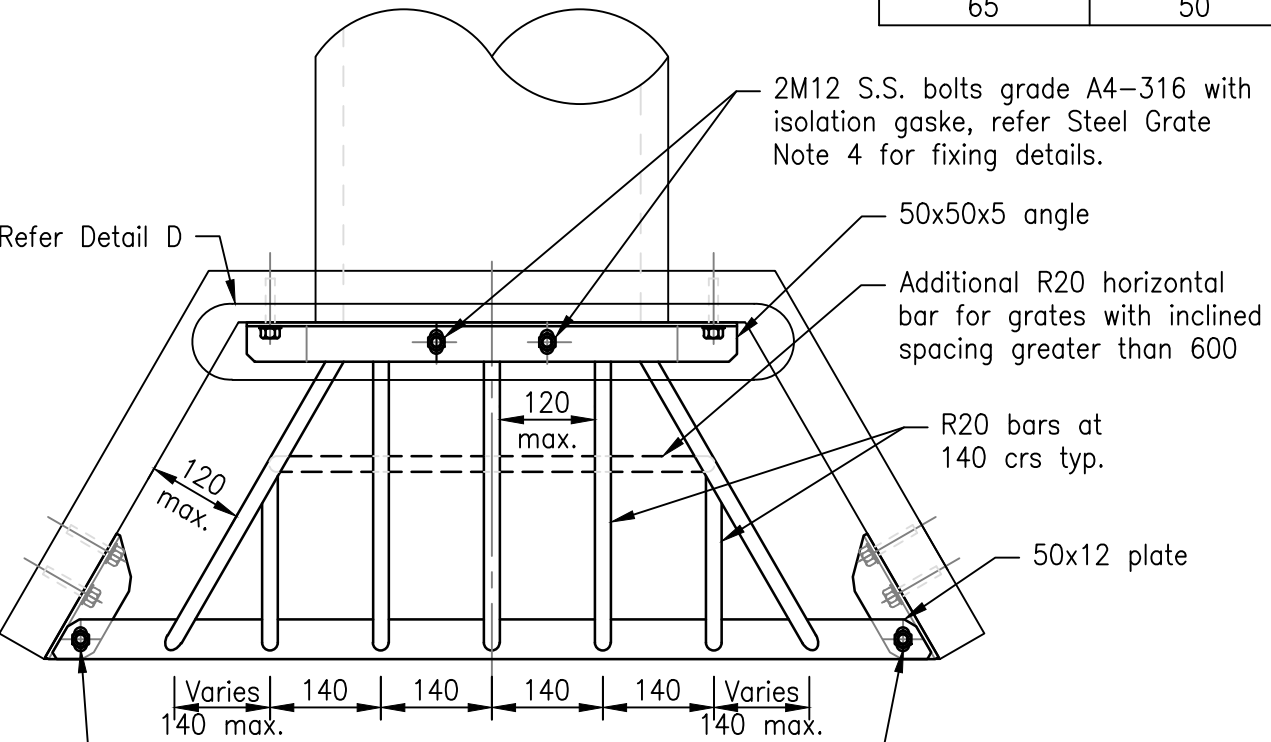
SECTION B-B



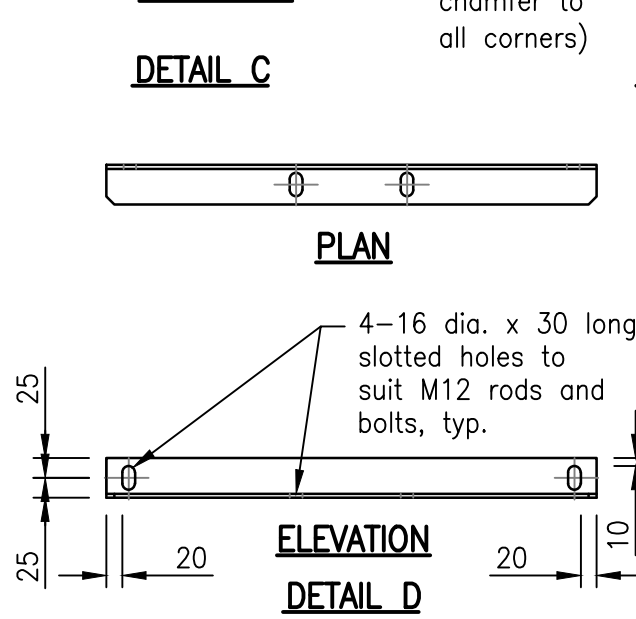
SECTION A-A

STEEL GRATE NOTES:

- All dimensions are in millimetres except reduced levels and chainages which are in metres. All levels are to Australian Height Datum. Dimensions shall not be scaled off the drawings.
- Steelwork to be fabricated to MRTS78 fabrication of structural steelwork. SHS tube to be grade 350 to AS1163. Merchant bar sections (round and flat) to be grade 350 to AS3679.1. All steelwork to be hot dip galvanised to AS4680 unless shown otherwise. Prior to galvanising all weld splatter and welding slag to be removed. All sharp corners to be ground smooth.
- Welding symbols to AS1101.3. All welding to AS1554.1. All welds, except location tack welds, to be SP category. Welding consumables to be controlled hydrogen type: E49XX or W50X unless shown otherwise. Welding consumables to AS4855. All welds to be 6mm CFW all around unless shown otherwise.
- Stainless steel bolts, nuts and washers to be grade A4-316. Stainless steel threaded rods to be grade A4-316. Insulation gasket to be applied between washer and plate to separate stainless steel and galvanised steel. Apply Duralac or approved equivalent paste to all stainless steel bolts and washers to separate stainless steel and galvanised steel.
- Epoxy grout to be Epirez 133 or approved equivalent.
- Maximum space between bars is 120mm.



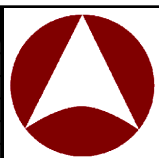
PLAN



PLAN

**ELEVATION
DETAIL D**

Rv.	DATE	REVISIONS
A	11/16	ORIGINAL ISSUE



INSTITUTE OF PUBLIC WORKS ENGINEERING AUSTRALASIA
STANDARD DRAWINGS

DRAINAGE DETAILS
CULVERT INLET SCREEN ON PRECAST HEADWALL
DN375 TO DN600 PIPES AND ≤ 600x450 RCBC

DS-083