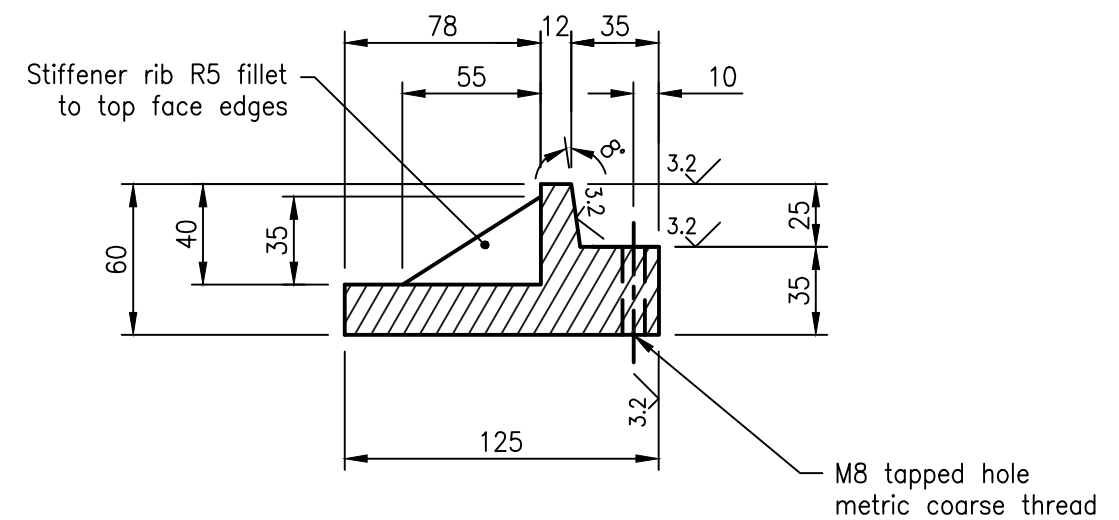


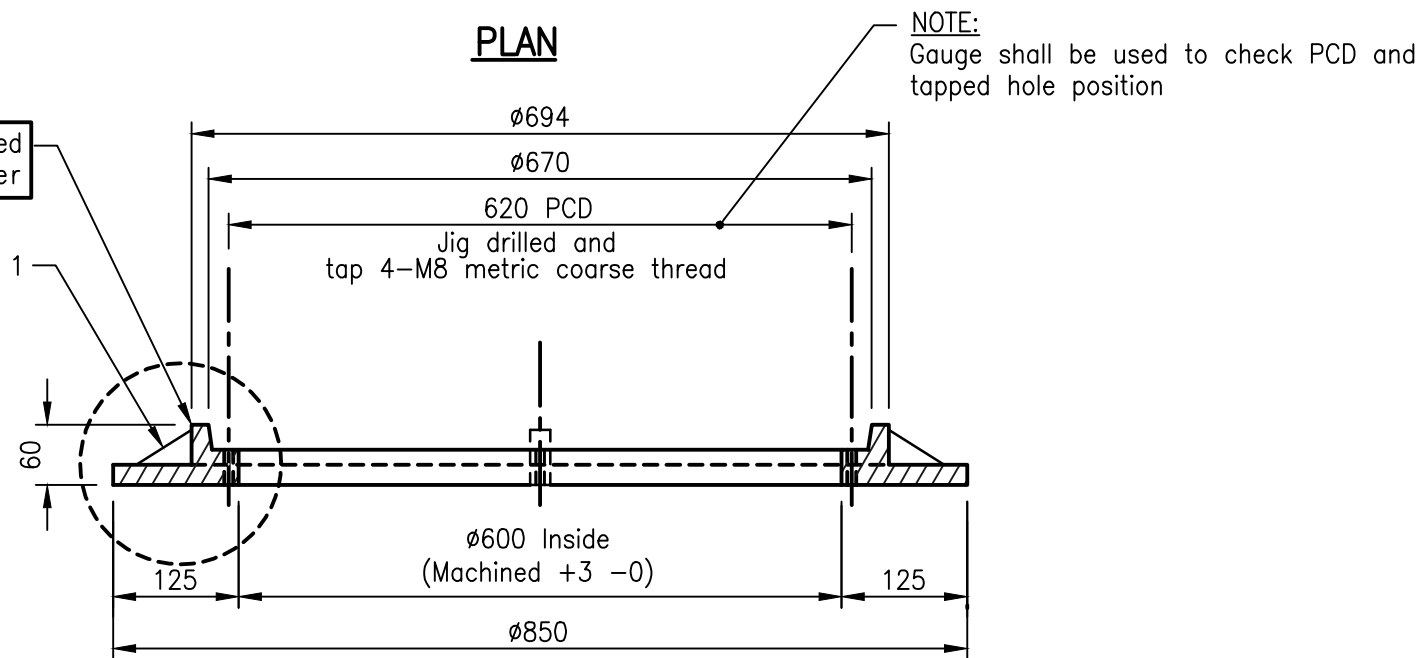
PLAN



DETAIL 1

Riser will be required for roadway cover

See detail 1



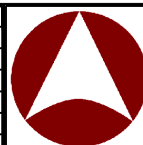
SECTION

NOTES:

1. All edges to be square.
2. Casting to be free of burrs and pits.
3. Material
 Grey Cast iron (AS 1830)
 Tensile strength : >T220
 Hardness : 145-185 (HB)
 Design Load = 210kN (AS 3996)
 Mass = 59.5Kg
4. Tolerances
 Cast size $\pm 1.00\text{mm}$
 Angle Profile $\pm 0.25^\circ$
 Machined size $\pm 0.125\text{mm}$
 Overall diameter of cover + 0mm-0.25mm
 DFT of coating 50 μm
5. Machine surface symbol: 3.2
6. All machined surfaces shall have a coating approved as fit for the purpose of providing a rust proof, non-stick and gas/water proof joint.
7. Refer Std Dwg No DS-018 for manhole riser details.
8. Refer Std Dwg No DS-019, DS-020 and DS-021 for manhole cover details.
9. All dimensions are in millimetres unless shown otherwise.

These drawings have been developed in consultation between the participating Councils.
 BEFORE USE, the user shall confirm that the drawing has been adopted by the appropriate Council.

Rv.	DATE	REVISIONS
C	06/14	Review
B	03/14	Amended Drawing Number
A	10/12	ORIGINAL ISSUE



**INSTITUTE OF PUBLIC WORKS ENGINEERING AUSTRALASIA
 STANDARD DRAWINGS**

**MANHOLE FRAME
 (ROADWAY AND NON-ROADWAY)
 1050 TO 2100 DIAMETER**

DS-015

C
B
A
Rv.