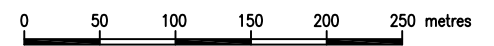


LEGEND

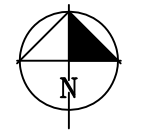
-  URBAN RESIDENTIAL-STANDARD AND MEDIUM DENSITY
-  VILLAGE PARK
-  LOCAL PARK
-  MAJOR ROADS
-  INDICATIVE COLLECTOR STREETS
-  INDICATIVE ROAD ACCESS POINTS
-  INDICATIVE BUS ROUTE OPTIONS
-  MAJOR PATHS
-  PRECINCT BOUNDARY
-  STORMWATER FILTRATION WETLANDS
-  GROSS POLLUTANT TRAP
-  BIOFILTRATION LOCATION
-  THIS WETLAND IS LOCATED WITHIN EXISTING NORTH LAKES GOLF COURSE
-  PROPOSED TRAFFIC LIGHTS

Central Golf Precinct

PRINCIPLES PLAN



Scale 1:5000 at A3



File No 2836-CG
Dwg CGPrecinctFig4
May 2009

FIGURE 4