

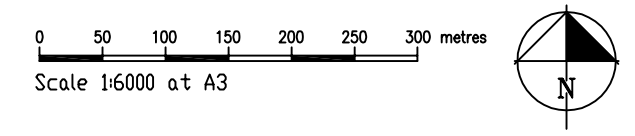
- LEGEND**
- URBAN RESIDENTIAL-STANDARD AND/OR MEDIUM DENSITY
 - LINEAR PARK
 - VILLAGE PARK
 - LOCAL PARK
 - MAJOR OPEN SPACE
 - INDICATIVE ROAD RESERVE
 - NOISE ATTENUATION AND LANDSCAPE TREATMENT
 - MAJOR ROADS
 - INDICATIVE COLLECTOR STREETS
 - INDICATIVE ROAD ACCESS POINTS
 - INDICATIVE BUS ROUTE OPTIONS
 - MAJOR PATHS
 - GROSS POLLUTANT TRAP
 - STORMWATER FILTRATION WETLANDS
 - POSSIBLE PUBLIC TRANSPORT GREENWAY
 - VISUAL LINK
 - PRECINCT BOUNDARY
 - COUNCIL BOUNDARY
 - LOCAL COMMUNITY FACILITIES
 - PROPOSED TRAFFIC LIGHTS

NOTE:
 The boundaries of the precinct and the layout and areas of uses are shown in notional terms only. The final boundaries of all land use elements within the precinct area will be fixed upon approval of subsequent sector plans.

LATM devices to be located on proposed collector road at the southern end of precinct to control through traffic.

**BRIDGEHAVEN
 RESIDENTIAL PRECINCT**

PRECINCT PLAN MAP



File No 2836-BA
 Dwg BFig3a_Precinct
 August 2006