

Township and Coastal Communities Character Investigation

July 2023



Contents

Acknowledgement.....	3
Introduction.....	4
Strategic links.....	4
Process.....	4
Background	6
Community engagement.....	6
Townships Character Profiles.....	8
D'Aguilar	10
Dayboro	12
Samford Village	14
Wamuran	16
Woodford	18
Coastal Communities Character Profiles	21
Beachmere	24
Bongaree	26
Clontarf	28
Donnybrook	30
Margate	32
Redcliffe Seaside Village	34
Scarborough	36
Toorbul	38
Woody Point	40
Woorim	42
Recommendations	44



Acknowledgement

We acknowledge the Kabi Kabi, Jinibara and Turrbal Peoples as the Traditional Custodians of the lands and waterways of the Moreton Bay Region, and pay our respects to their Elders, past, present and emerging. We recognise that the Moreton Bay Region has always been a place of cultural, spiritual, social and economic significance to First Nations people.

We are committed to working in partnership with Traditional Custodians and other First Nations communities to shape a shared future that celebrates First Nations history and culture as an irreplaceable foundation of our region's collective identity.

Acknowledgements

We acknowledge the work of Deicke Richards Architects and Vault Heritage in the development of this investigation.

Disclaimer

The Moreton Bay Regional Council and its officers accept no responsibility for any loss whatsoever arising howsoever from any person's act or omission in connection with any information, expressed or implied, contained within this document. Nothing in this document should be taken as legal advice.

Introduction

Character is important because it contributes to what makes a place identifiable. It is often why people choose to live in a place and why tourists visit.

It's important to investigate the character of our Townships and Coastal Communities, so that Moreton Bay can grow in a manner that respects what makes it unique.

Character can be respected in future development.

The purpose of this 'Township and Coastal Communities Character Investigation' document is to identify and describe the current character of our Moreton Bay's townships and coastal communities. This document also makes recommendations for future actions, related to strategic land-use planning.

Definition

Character is a tangible, identifiable style and enduring aesthetic that is valued locally or regionally.

Strategic links

The 'Our Moreton: Growth Management Strategy 2042' (GMS) focuses on supporting a coordinated, strategic and planned approach for the region's sustainable growth, and sets outcomes, strategic priorities, policy directions, measures and targets to drive long-term transformational change.

Action 4.4 from the GMS is to complete the 'Township and Coastal Communities Character Investigation' and implement its findings.

This project is included in the Reshaping our Region's Planning portfolio, within the Great Places (Urban Design and Place Making) Program.

Process

Consultants Deicke Richards Architects and Vault Heritage undertook a character investigation in 2021 to 2022, which has formed the basis for this report. The consultants considered each township and coastal community's location and setting within the landscape, movement networks, community life and activity, and special places and buildings.

A 'Character Profile' was developed for each township and coastal community that includes a summarised description and information about each built form character.

In July-August 2022 an online community survey (Moreton Says Pulse Survey #3) focused on the place values and character features that the community value around the region. These results were considered in the development of this investigation.

Individual heritage places make important contributions to character, but individual places will be considered as part of the Heritage Planning Program and are not specified in this investigation.

Corporate Plan 2022-2027

Our Vision

Our Moreton Bay. Amazing places. Natural spaces.

Our purpose

Our communities are central to what we do. Working together, we aim to make our Moreton Bay a great place now and for future generations.

Our Strategic Pillars

Our Well-Planned Places

Growth Management Strategy

Our Goal

Our Moreton Bay will be a network of well-planned and connected places and spaces, enhancing lifestyle, accessibility and employment choices.

Outcome 4: Well-planned neighbourhoods

We have well-planned neighbourhoods that support changing communities, respect cultural heritage and enjoy a unique sense of place

Our strategic priorities

Engage communities in planning for growth and defining important elements of a place's character and identity.

Value and promote townships and important elements of local heritage, character and identity, and the role of good design and neighbourhood planning to create memorable and livable places.

Our policy directions

Council provides guidance on good local design outcomes that reflect the desired character and identity of place.

Our measures of success

Community engagement in planning programs increases

Action plan

4.4 Complete the Township and Coastal Communities Character Investigation and implement its findings

Background

The Moreton Bay Planning Scheme (2016) identifies 'Township zones' in the Moreton Bay Region. Within these Township zones there are four precincts - centre, convenience, residential and industry.

The five townships identified are:

1. D'Aguilar
2. Dayboro
3. Samford Village
4. Wamuran
5. Woodford

The Planning Scheme identifies three 'Coastal Communities precincts' within the General residential zone:

1. Beachmere
2. Donnybrook
3. Toorbul

For the purposes of this document the following places have also been included as Coastal Community, although they are identified as General residential zone Next generation neighbourhood or Urban neighbourhood precincts, with Bongaree, Redcliffe and Margate also within a Centre zone:

4. Bongaree
5. Clontarf
6. Margate
7. Redcliffe Seaside Village
8. Scarborough
9. Woody Point
10. Woorim

Community engagement

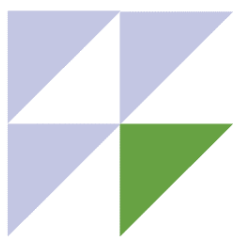
A [Moreton Says Pulse Survey #3](#) was undertaken from July to August 2022 and focused on what the community value about character. It garnered 3,200 responses with residents from across the Moreton Bay Region represented: 95% of respondents being current residents in the region, with 61% living in the region for more than 10 years.

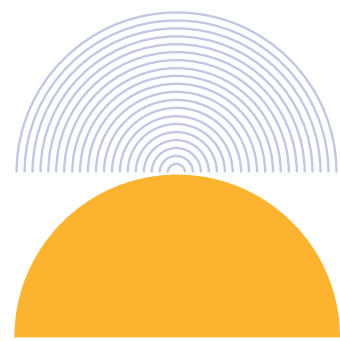
This survey included neighbourhood specific questions that asked the community to identify why they live where they live, and what they value about the character of the region. This information was able to be analysed specifically for the Townships and Coastal Communities neighbourhoods.

For both the Township and Coastal Community neighbourhoods the community value living near natural areas and wildlife, peaceful neighbourhoods, and easy access to open space and civic amenities.

Residents in the Township neighbourhoods expressed that they enjoyed the rural feel, giving them the opportunity to "get away from the madness" (Dayboro Resident) and identifying that their needs are "unique and specific to their area" (Samford Valley resident) due to the closeness to nature, conservation areas and national parks. These areas are characterised by slower paced living, larger blocks, safe neighbourhoods and a closeness within the local community.

Within the Coastal Communities areas, residents valued access to beaches, activities and preservation of the natural bushland over having larger blocks and more civic amenities. Residents expressed that they enjoyed the small village feel (Bribie Island Resident) and that "peace and quiet has always been a key factor of living in the area" (Donnybrook Resident).





Location of Townships and Coastal Communities

Townships Character Profiles

Moreton Bay townships were built on former railway stations. Samford Village and Dayboro were part of Ferny Grove line, and D'Aguilar, Wamuran and Woodford were on the Kilcoy line. The traditional character seen in these townships is because of their connections to colonial settlement history and the materials and services made available by the railway.

D'Aguilar | Jinibara Country



Dayboro | Kabi Kabi Country



Samford Village | Turrbal Country



Wamuran | shared Jinibara and Kabi Kabi



Woodford | Jinibara Country



Township Character Profile

D'Aguilar

Jinibara Country



A small township set in a rural landscape.

D'Aguilar is located on a narrow pass at the headwaters of two river catchments. The elevated location of the township provides a strong visual distinction between the vegetated hills to the east and the agricultural landscape to the west. D'Aguilar acts as a gateway township.

The character of the built form in D'Aguilar provides glimpses into traditional rural Queensland lifestyle.



'D'Aguilar House'
Sketch by Deicke Richards



The 'Dag Pub and Motel' exhibits traditional colours and materials with its timber weatherboards and corrugated iron roof



Character housing with traditional colours, materials

D'Aguilar built character

Forms: Colonial, federation and interwar dwellings, pyramid, hipped and gable roof forms, stepped verandah roof, lowset on short stumps



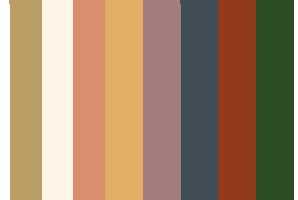
Materials: Timber chamferboards, weatherboards, corrugated iron sheeting, timber posts and handrails, timber front stairs, low timber fences



Details: Stepped verandahs, timber batten gable ends, timber balustrades and verandah posts



Colours: Federation colours - deep reds, golds, green and warm creams



Township Character Profile

Dayboro

Kabi Kabi Country



A traditional township centred on a sloping main street, framed by lush vegetation and rural landscape.

Dayboro is located along a shallow valley crossed by two watercourses. It has a traditional landscaped 'main street', with large trees along the Williams and McKenzie Street intersection. The main street is made up of small-sized tenancies, in heritage-style buildings, predominantly with awnings. The buildings terrace up Williams Street, enhancing the appearance of the rise of the street, and visually terminate on the feature building and large trees of the Crown Hotel. In the residential precinct there are original style 'timber-and-tin' dwellings with lush gardens.



Williams Street, Dayboro
Sketch by Deicke Richards



'Timber-and-tin' dwellings with traditional built forms, materials, colours and details.



The Crown Hotel is in a prominent location overlooking the town at the top of the hill. The large trees frame the traditional building.

Dayboro built character

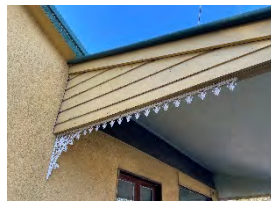
Forms: Colonial, federation and interwar dwellings, pyramid, hipped and gable roof forms, stepped verandah roof, lowset on short stumps. Interwar shops with gable or hipped roofs, large awnings and decorative parapets, small footprint



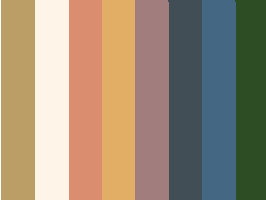
Materials: Timber weatherboards, corrugated iron roofing, timber posts and decorative details, timber battens, heritage shop with stucco walls and parapet, face brick and roof tiles.

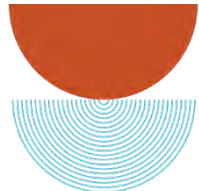


Details: Weatherboard gable ends and parapets, metal window hoods, timber windows and doors, wide awnings, shops open directly to footpath, heritage place with tiled shopfront, decorative parapets.



Colours: Federation colours - deep reds, golds, green and warm creams, some blues and greys.





Township Character Profile

Samford Village

Turrbal Country



A quaint rural township centred on a compact main street and set within rolling hills and forested mountain surrounds

Samford Village is surrounded by the rolling hills of the Samford Valley, on the upper reaches of the South Pine River. The traditional 'main street' on Main Street (the site of the former railway station) is compact, with attractive cafes, bars and retail destinations housed in character buildings with high street engagement. John Scott Park is the heart of the village centre. Local homes have been inspired by traditional character.



'Samford Farmers Hall'
Sketch by Deicke Richards



John Scott Park is the heart of the Samford Valley township and includes the 'Rotary Station' stage built with traditional materials and details.



Newer buildings influenced by traditional built form character.

Samford Village built character

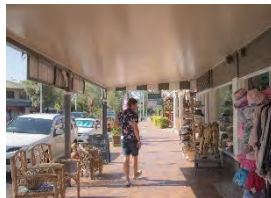
Forms: Traditional moderately pitched roof forms, gables and hips, simple light awnings, lowset, small footprint, informal street setbacks to shopfronts



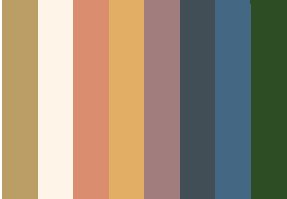
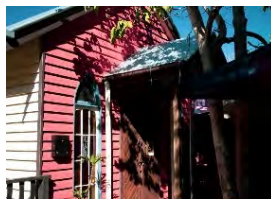
Materials: Weatherboard, corrugated iron roofing, timber posts and detailing, face brickwork



Details: 'Rural' aesthetic, relaxed arrangement of buildings, open spaces between.



Colours: Traditional colours, red-brown brick, neutrals



Township Character Profile

Wamuran

Shared Jinibara and Kabi Kabi Country



A small township with connections to former railway, set within rural and hilly bushlands.

Wamuran is positioned at the foothills of the D'Aguilar Range, with hilly bushlands to the south and broad agricultural lands to the north. It is located at the junction of one of the earliest surviving road transport routes in Queensland - Old North Road and D'Aguilar Highway. Where these routes meet are two hubs of activity. In the residential precinct there are interwar and postwar traditional style architectural 'timber-and-tin' dwellings.



Wamuran streetscape
Sketch by Deicke Richards



Small scale convenience uses with awnings setback from the street.



Adaptive reuse of established buildings with simple structures and a presence to the street.

Wamuran built character

Forms: Interwar and post war dwellings, traditional roof forms, hips and gables, lowset on short stumps, postwar modern commercial with skillion roofs and angled awning posts.



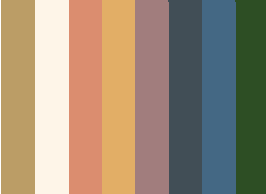
Materials: Timber weatherboards and details, metal cladding/ corrugated roofing, fibro cement sheet cladding



Details: 'Light industrial' postwar aesthetic, murals



Colours: Traditional and feature colours, rural landscape colours, warmer palette





Woodford

Jinibara Country



A distinct rural colonial township, centred on a long main street, set in a rural landscape.

Woodford township follows a low ridge amongst a broad fertile valley. The centre is located on a long roadway with large, landscaped medians, parks, and public amenities. There is a great diversity of scales of predominately timber shops, with timber framed and corrugated roofed awnings. The buildings frame views to surrounding rural landscape and mountain ranges. The area's historic legacy of timber has influenced the 19th and 20th century colonial architecture of homes and businesses.



Woodford main street
Sketch by Deicke Richards



Woodford main street with wide planted median and street facing shopfronts.



Character 'Queenslander' buildings with traditional colours, materials and moderately pitched roofs with narrow, decorative gables.

Woodford built character

Forms: Colonial, federation and interwar dwellings, pyramid, large hip and gable roof forms, stepped verandah roofs. Shops with traditional pitched roof forms, generally narrow gables 4-12m face the street, small footprints, large continuous awnings with timber post supports, decorative parapets with signage



Materials: Timber chamferboards and weatherboards, timber posts and detailing, timber-framed doors and windows



Details: Weatherboard gable ends and parapets, metal window hoods, timber-framed windows and doors, timber battens, wide awnings, decorative parapets. Shops open directly to footpath.



Colours: Traditional colour schemes, mixed with modern colours





Coastal Communities Character Profiles

The connection to the coastal waters of Pumistone Passage and Moreton Bay plays an important part in the character of these communities. Many started as small fishing villages and holiday destinations, which has influenced the built form character of these communities.

Beachmere | Kabi Kabi Country



Bongaree | Kabi Kabi Country



Clontarf | Kabi Kabi Country



Donnybrook | Kabi Kabi Country



Margate | Kabi Kabi Country





Coastal Community Character Profile

Beachmere

Kabi Kabi Country



Bayside place with decorative coastal holiday shacks overlooking tidal mudflats.

The Beachmere coastal community is positioned on a small point by the Caboolture River and Moreton Bay, surrounded by wetlands and rural areas. Settled as a fishing community, the town extends in a north-south direction along the coastline. The community has developed incrementally since the 1870s, contributing to the 1930s domestic architecture of coastal holiday shacks with decorative, playful elements.



Beachmere
Sketch by Deicke Richards



Traditional character homes with detailing, verandahs and screening.



Character housing with pastel colours, materials and moderately and low pitched roof lines

Beachmere built character

Forms: Post war dwellings with low-moderate pitched gable and hip roof forms, shops with skillion roof, cantilevered awning over footpath. Mix of lowset and highset.



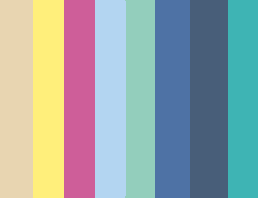
Materials: Fibre cement sheeting, weatherboards, corrugated iron, light materials, low metal and timber fencing.



Details: Lightweight elements, modest designs, ocean symbology.



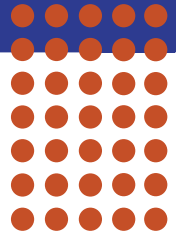
Colours: Fresh and pastel colours, coastal landscape colours.



Coastal Community Character Profile

Bongaree

Kabi Kabi Country



Island seaside destination peppered with character buildings and extensive foreshore parks.

Bongaree is located on the south-west of Bribie Island, overlooking the Pumicestone Passage and wetlands. It is an historic gateway to Bribie Island with a distinct street grid pattern and laneways, with retail shops along the esplanade and low-medium scale apartments. There are green leafy streets, landscaped medians and foreshore parks. It is peppered with character buildings inspired by art deco, coastal holiday shacks and Queenslanders with interwar and post-war architecture.



Bongaree

Sketch by Deicke Richards



Traditional light materials



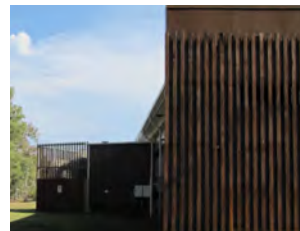
Added verandah enhances the coastal character

Bongaree built character

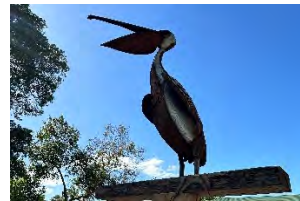
Forms: Gable and hip roofs, extended eaves, curved awnings, angles, awnings to main streets, arches, shops articulated in plan, extended roof forms to brick verandas, lowset timber homes on stumps.



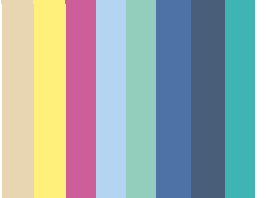
Materials: Fibre cement sheet, weatherboards, breezeblocks, masonry bases and timber stumps, light materials, corrugated iron, corten steel, timber.



Details: Mix of pre- and post-war styles, lightweight elements, ocean symbology, curved forms, timber and rustic metal features, nostalgic/retro holiday style, leafy streets



Colours: Warm-toned pastel colours, coastal landscape.



Coastal Community Character Profile

Clontarf

Kabi Kabi Country



Urban entry to the Redcliffe Peninsula coast from the Houghton Highway.

Clontarf is located on a small point at the southern entrance to the Redcliffe Peninsula between the extensive wetlands of Hays Inlet to the west and the sandy shores of Bramble Bay to the east. The town centre is bisected by Elizabeth Avenue into two sections, with Hornibrook Esplanade connecting smaller clusters of commercial uses and the Clontarf Visitor Centre located at Pelican Park. The amenity of the foreshore and views over Bramble Bay help create a strong sense of identity for this area. The historic Hornibrook Bridge abutment is a significant part of the area's history.



Clontarf
Sketch by Deicke Richards



Traditional light materials



Variation on simple skillion roof structure.

Clontarf built character

Forms: Predominantly post-war dwellings, including skillion, low gable and moderately pitched hip roof forms, extended eaves and awnings, low open front fences



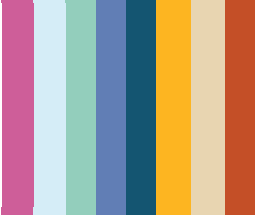
Materials: Fibre cement sheet, weatherboards, chamferboards, masonry foundations, corrugated roofing, stucco and face brick detailing, roof tiles, timber battens.



Details: Lightweight elements, balcony and awning features, Hornibrook bridge is historic art deco 'gateway' structure into Clontarf.



Colours: Light pastel coastal colours. Whites, pale blue and pinks, natural timber and red brick colours.





Coastal Community Character Profile

Donnybrook

Kabi Kabi Country



Coastal residential architectural character in the relaxed atmosphere of a fishing village.

Donnybrook is located on the western side of the Pumicestone Passage. It is surrounded by wetlands and farmlands. A north/south esplanade street runs along the foreshore, terminating at the boat ramp, which is a major destination. The foreshore hub represents the strong connection to the water and fishing. There is an abundance of coastal character housing in the coastal 'holiday shack' style.



Donnybrook
Sketch by Deicke Richards



Donnybrook's relaxed beachside character influences the built form.



Quiet coastal suburban streets with lightweight built form.

Donnybrook built character

Forms: Skillion and long gable roofs, extended eaves, propped awnings, angles, standalone multi-use shops with awnings to the street



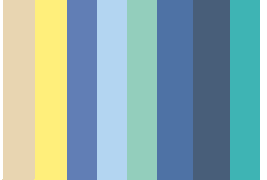
Materials: Fibre cement sheet, chamferboards, light materials, corrugated roofing, timber battens, timber framed doors and windows..



Details: Lightweight elements, asymmetrical shapes, large setbacks providing open spaces between buildings.



Colours: Fresh and pastel colours, coastal landscape colours.



Coastal Community Character Profile

Margate

Kabi Kabi Country



Seaside living overlooking a sandy esplanade and foreshore lined by Norfolk Pine trees.

Margate is positioned on the south-eastern foreshore of the Redcliffe Peninsula. The predominant architectural character of the foreshore area is three-storey 1960-1980s apartments. Beyond the foreshore, the character reflects its history as a 20th Century tourist destination, with inter-war architecture and some early post-war and federation buildings.

The main commercial hub, with traditional main street buildings, is located away from the foreshore along the north-south link of Oxley Avenue.

Margate
Sketch by Deicke Richards





Early 20th Century holiday units



Commercial buildings with outdoor dining and awnings

Margate built character

Forms: Mix of angles and curves, boxed awnings to main streets, lower pitched roof forms, smaller overhangs, multi-faceted street windows



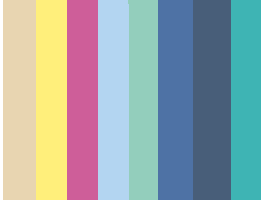
Materials: Painted stucco, feature brickwork, fibre cement sheet with timber cover battens, weatherboards, timber, concrete, corrugated roofing, roof tiles.

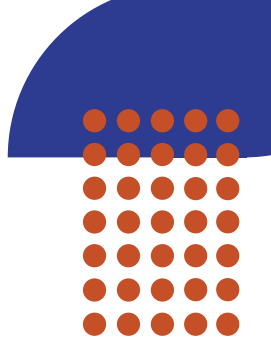


Details: Art deco and historical references, decorative names and numbers, louvres, ocean symbology. Individual shopfronts, awning over footpath



Colours: Bright pastel coastal colours, saturated blues, yellows and brick orange





Coastal Community Character Profile

Redcliffe Seaside Village

Kabi Kabi Country



Central vibrant seaside destination with character buildings and public foreshore parks.

The commercial buildings on Redcliffe Parade, Redcliffe Jetty, Settlement Cove, Bee Gees Way and the views of Moreton Bay are major destinations for visitors and contribute to the hub of vibrant activity.

The long block-widths and narrow frontages have resulted in fine-grain arcades and walkways with street awnings.

The centre features early to mid-20th Century-character built forms featuring decorative facades and parapets.



Redcliffe Seaside Village
Sketch by Deicke Richards



Covered walkways like Comino's Arcade are characteristic of the Redcliffe Seaside Village



Decorative parapets in an Art-Deco style

Redcliffe Seaside Village built character

Forms: Traditional single loaded shopping street, mix of interwar and post war, pedestrian scale, decorative parapets, traditional roof forms, rooftop balconies, curved corners (Art Deco reference).



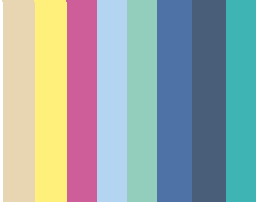
Materials: Masonry, face brick and painted stucco, fibre cement sheet, weatherboards, glass bricks, concrete and tile.



Details: Tiled facades and walls, character verandahs and balconies, louvres, historical and art deco references, public art trail along foreshore, Bee Gees Way.



Colours: Muted colour schemes in reds and creams (Redcliffe sands), red brick, bright modern murals.





Coastal Community Character Profile

Scarborough

Kabi Kabi Country



Coastal esplanade bound by awnings and mature trees overlooking a sloping foreshore parkland and ochre cliffs.

The main street is located along two blocks of Landsborough Avenue and features continuous awnings shading the footpath, and outdoor dining. There is a variety of tenancy sizes of mostly restaurants and cafes. The mature tree canopy over the street creates an intimate space that feels welcoming.

Behind the main street are 7 to 8 storey mixed-use apartments overlooking the expansive public parkland and beaches.



Scarborough
Sketch by Deicke Richards



Fresh pastel colours, decorative facades, awnings to street trading,



Coastal materials with lightweight elements

Scarborough built character

Forms: Mix of traditional pre- and post-war moderately pitched roof forms including hips, gables, and skillions, and long low gables. Extensive awnings to main shopping street over footpath.



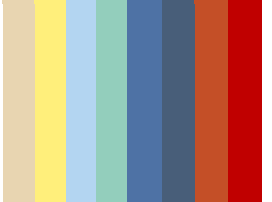
Materials: Fibre cement sheet, weatherboards, chamferboards, face brick, render, corrugated iron roofing, roof tiles.



Details: Balconies and awnings, typically deep lots provide 'green corridor' backyards, decorative streetscape elements, curved forms.



Colours: Fresh coastal landscape colours with ochre and red themes.



Coastal Community Character Profile

Toorbul

Kabi Kabi Country



Post-war Coastal residential architectural character in the relaxed atmosphere of a seaside community.

Toorbul is located on a small low-lying strip of land on the Pumicestone Passage, bound by Elimbah and Ningi Creeks. The community comprises of low-scale dwellings in a coastal 'holiday shack' style on short stumps with skillion roofs, wide eaves and traditional balustrading in fabricated metal or timber. The Toorbul Esplanade Foreshore and boat ramp are major attractors.

Toorbul

Sketch by Deicke Richards





Toorbul store illustrates traditional colours and materials with its timber weatherboards and corrugated iron awning



Toorbul waterfront views

Toorbul built character

Forms: Skillion roofs and long gables, extended eaves, propped awnings, angles, simple 'square' footprints, front verandahs.



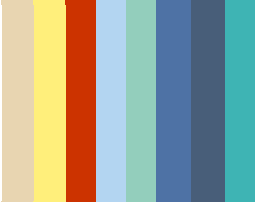
Materials: Fibre cement sheet, weatherboards, light materials, corrugated iron, timber battens.



Details: Lightweight elements, ocean symbology, asymmetrical shapes, lowset on short stumps, 'holiday bungalow' quality.



Colours: Fresh and pastel colours, coastal landscape colours.



Coastal Community Character Profile

Woody Point

Kabi Kabi Country



Urban coastal architecture set on a promontory overlooking the jetty and two bays.

Woody Point is positioned on the southern-most tip of the Redcliffe Peninsula and has the unique distinction of a western facing waterfront. A small number of tenancies, mostly comprising cafés and restaurants, line the waterfront portion of Oxley Avenue with stepped parapets and awnings.

Medium-rise residential apartment complexes, below the height of the pine trees, line the waterfront and backstreets of Woody Point, delivering a compact urban form.



Woody Point
Sketch by Deicke Richards



Wood Point's relaxed bayside character influences the built form.



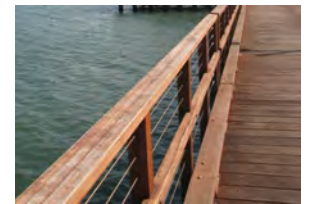
Quiet coastal suburban streets with lightweight built form

Woody Point built character

Forms: Historic coastal dwellings with gable and hip roof forms interspersed with skillion roof forms, on stumps, eaves and sunhoods. Cantilevered awnings, stepped parapets



Materials: Weatherboards, chamferboards, fibre cement sheet, feature brickwork, corrugated iron and roof tiles, timber battens

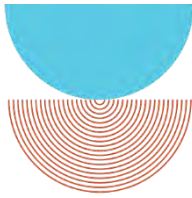


Details: Weathered timber, complimentary scale, asymmetrical shapes, ship references. Dwellings from colonial, federation, interwar and post-war eras



Colours: Fresh and pastel colours, coastal landscape colours, white.





Coastal Community Character Profile

Woorim

Kabi Kabi Country



Relaxed Island beachside living with a coastal architecture set within extensive bushland.

Woorim is located on the south-eastern shore of Bribie Island and is framed by extensive bushland on the landward side, with long surf beaches stretching north/south. The coastal landscape and small-town centre create a holiday atmosphere along with coastal 'holiday shack' homes and short-stay apartments.



Woorim Beachfront
Sketch by Deicke Richards



Fresh pastel colours, skillion roofs, propped awnings, light materials



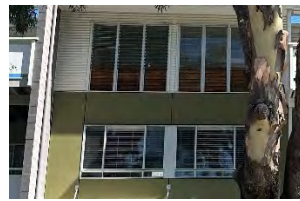
Coastal colours, skillion roofs, coastal materials with lightweight elements

Woorim built character

Forms: Skillions and long low-pitched gable roofs, extended eaves and overhangs, open carports, low or no front fence, modest scale



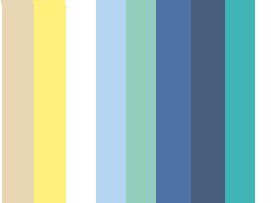
Materials: Fibre cement sheet / timber cover battens, breezeblocks, chamferboard, timber framed windows, light materials, corrugated iron, timber and steel posts, concrete stumps.



Details: Simple design, raised above ground, low maintenance, 'touch the earth lightly,' holiday bungalow quality, outdoor living



Colours: Fresh and pastel colours, coastal landscape colours.





Recommendations

The following are recommended actions for a way-forward:

No.	Action	Priority	Timing
1.	Investigate amending the Moreton Bay Planning Scheme (2016) Township Character Planning Scheme Policy to include the findings of this report for each of the five Townships.	High	Short-term
2.	Use the findings of this report as background material to Townships and Coastal Communities policy directions for the New Planning Scheme (Review) and future Neighbourhood Plans.	High	Medium-term
3.	Complete the Moreton Bay Region Place Identity Study (as per the 'Growth Management Strategy 2042' - Action 4.3).	High	Medium-term
4.	Undertake a guideline for heritage and character buildings (as per the 'Growth Management Strategy 2042' - Action 4.5).	Moderate	Medium-term
5.	Undertake a Scenic Amenity and Regional Viewsheds Investigation.	Moderate	Medium-term





For more information on our new Corporate Plan and Pillars
scan the QR code or visit moretonbay.qld.gov.au