










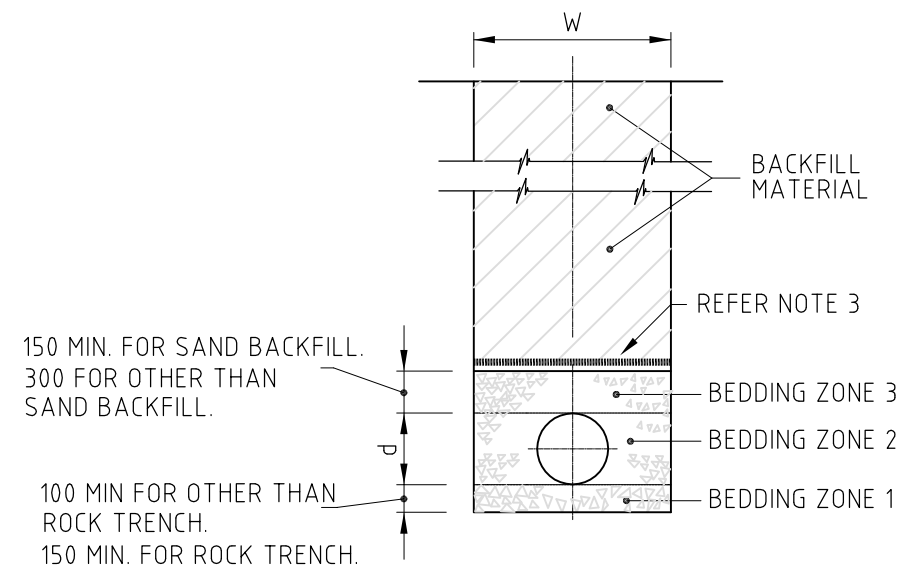
- ## TYPICAL LAYOUT PLAN



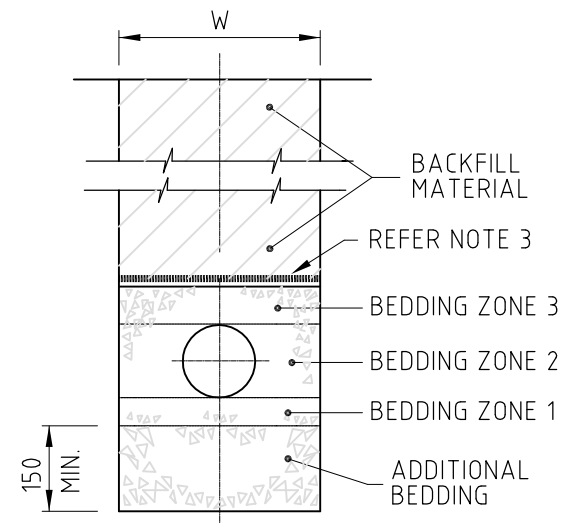
LEGEND

	WATER MAIN
	FIRE HYDRANT
	SERVICE CONDUIT
	STOP VALVE
	REDUCER PIPE
	DEAD END CAP
	NOMINAL KERB LINE

[illegible]

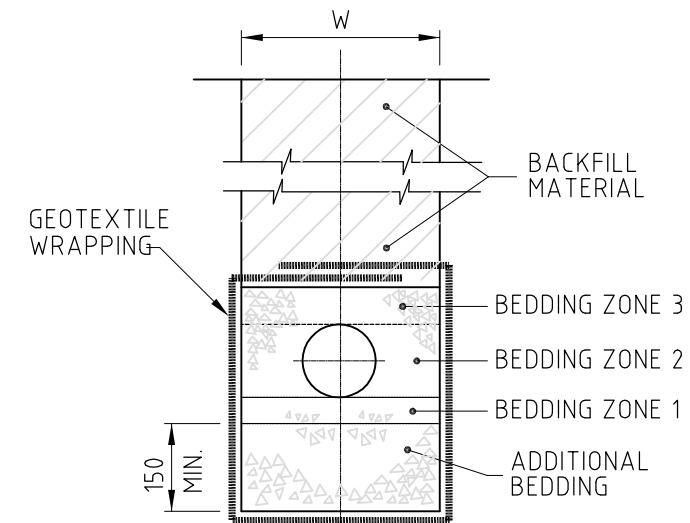


TYPE 1 CONSTRUCTION



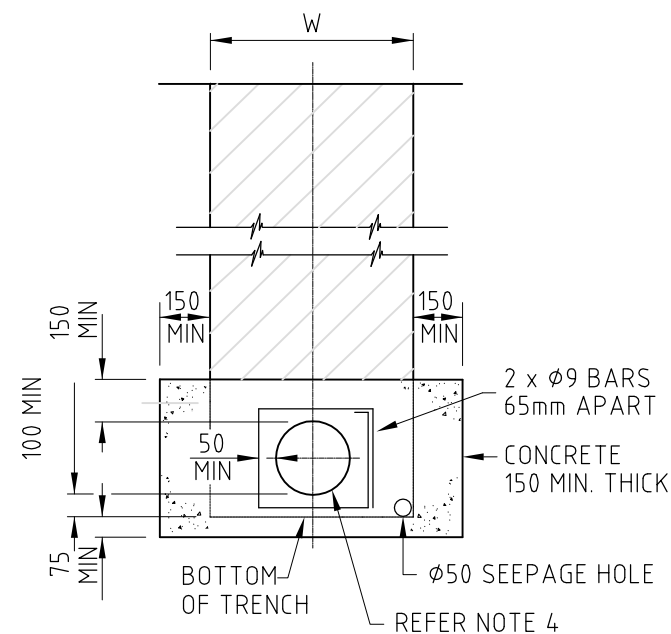
TYPE 2 CONSTRUCTION

FOR DETAILS OF BEDDING ZONES 1, 2 AND 3
REFER TO TYPE 1 CONSTRUCTION.



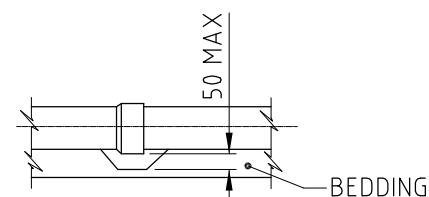
TYPE 3 CONSTRUCTION

FOR DETAILS OF BEDDING ZONES 1, 2 AND 3
REFER TO TYPE 1 CONSTRUCTION.



**CONCRETE BULKHEADS
MAINS AND TAPERS**

REFER NOTE 2



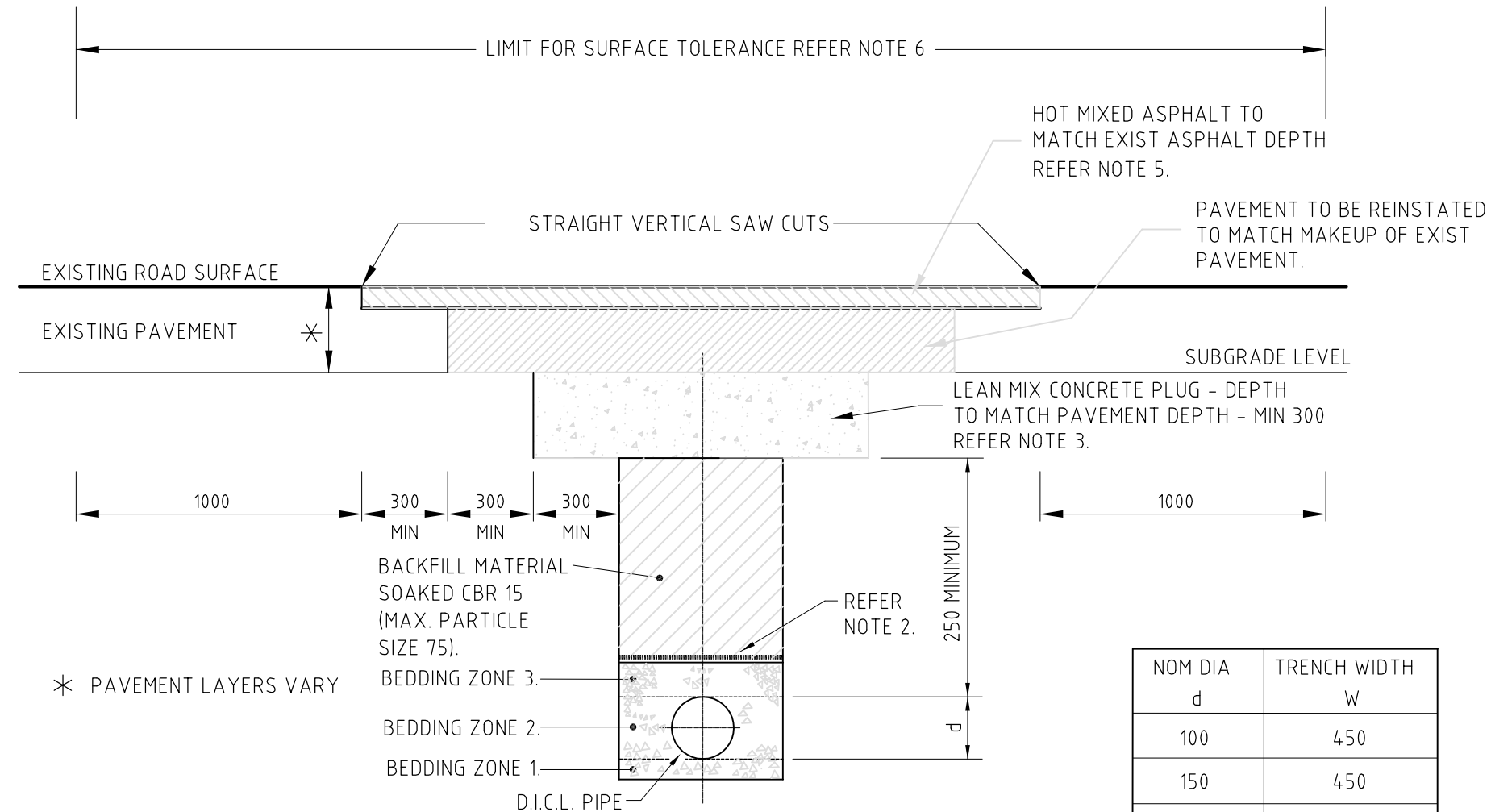
HAND HOLES

NOM. DIA d	TRENCH WIDTH W
100	450
150	450
225	600
300	750

NOTES:

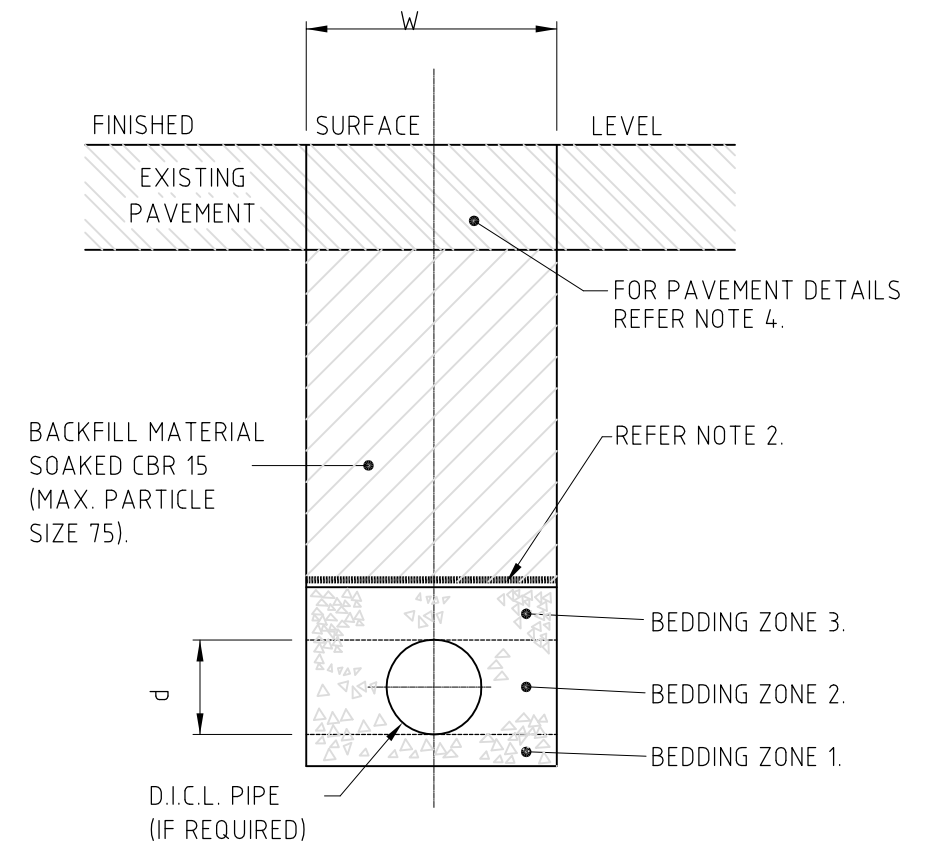
- FOR EXCAVATION, BEDDING AND BACKFILL REQUIREMENTS REFER COUNCIL'S STANDARD SPECIFICATION SS2.
- CONCRETE BULKHEADS SHALL BE SPACED AT:-
(A) 6m INTERVALS FOR $\phi 100$ TO $\phi 300$ PIPES WITH GRADES BETWEEN 15% AND 29%.
(B) WHERE GRADES EXCEED 29%, THE SPACING IN METRES, SHALL BE CALCULATED BY DIVIDING 100 BY THE GRADE (%).
- CONCRETE IN BULKHEADS IS TO BE GRADE N20.
- WHERE BACKFILL IS CLASSIFIED AS SAND (BY THE SUPERINTENDENT) A GEOTEXTILE BARRIER SHALL BE PROVIDED AT THE INTERFACE OF BEDDING ZONE 3 AND BACKFILL.
- THE PIPE SHALL BE PROVIDED WITH A 12 THICK COMPRESSIBLE MEMBRANE FOR THE EXTENT OF THE CONCRETE SURROUND.
- DIMENSIONS ARE IN MILLIMETRES UNLESS SHOWN OTHERWISE.

<p>REDCLIFFE CITY COUNCIL</p> <p>Copyright in the whole and every part of this drawing belongs to Redcliffe City Council and may not be used, sold, transferred, copied or reproduced in whole or in part in any manner or form or on any media, to any person other than by agreement with Redcliffe City Council.</p> <p>This document is produced by Redcliffe City Council solely for the benefit of and use by RCC in accordance with the terms of the retailer. Redcliffe City Council does not and shall not assume any responsibility or liability whatsoever to any third party arising out of any use or reliance by third party on the content of this document.</p>				<p>SURVEY:</p> <p>DESIGNED:</p> <p>RECOMMENDED:</p>	<p>A3 DATUM: A.H.D.</p> <p>CHECKED:</p> <p>APPROVED:</p>	<p>REDCLIFFE</p> <p>IRENE STREET REDCLIFFE PO BOX 66, REDCLIFFE QLD 4020 PHONE: (07) 3283 0233 FAX: (07) 3883 1723 WEB SITE: www.redcliffe.qld.gov.au</p> <p>CITY COUNCIL</p>	<p>RCC STANDARD DRAWINGS - WATER</p> <p>WATER PRESSURE MAIN GENERAL TRENCH AND BEDDING DETAILS</p>	<p>DATE: 26.07.06</p> <p>DRAWING No: W-0002</p>	<p>Rv. A</p>
---	--	--	--	---	--	---	--	---	--------------



TYPE 4 CONSTRUCTION PAVEMENT CROSSING

FOR DETAILS OF BEDDING ZONES 1, 2 AND 3
REFER TO TYPE 1 CONSTRUCTION.



TYPE 5 CONSTRUCTION ALONG UNSEALED ROAD SHOULDERS

FOR DETAILS OF BEDDING ZONES 1, 2 AND 3
REFER TO TYPE 1 CONSTRUCTION.

NOM DIA d	TRENCH WIDTH W
100	450
150	450
225	600
300	750

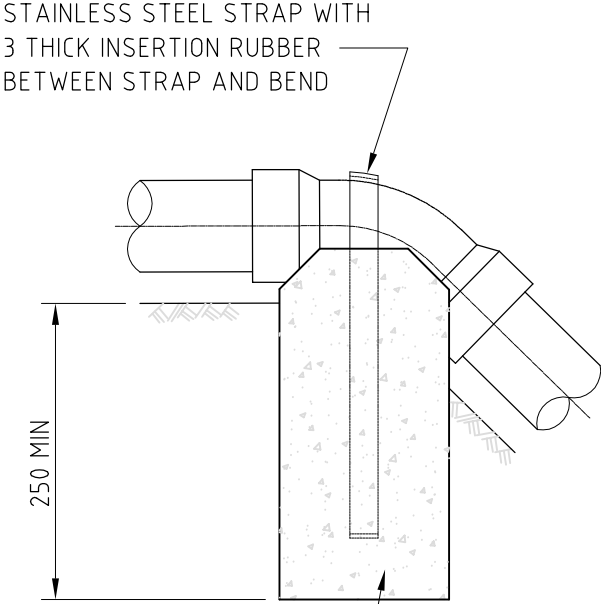
NOTES:

- FOR EXCAVATION, BEDDING AND BACKFILL REQUIREMENTS REFER COUNCILS STANDARD SPECIFICATION SS2.
- WHERE BACKFILL MATERIAL IS CLASSIFIED AS SAND (BY THE SUPERINTENDENT) A GEOTEXTILE BARRIER SHALL BE PROVIDED AT THE INTERFACE OF BEDDING ZONE 3 AND BACKFILL.
- THE SLAB SHALL BE GRADE N15 CONCRETE (ZERO SLUMP) PLACED IN 100 LAYERS AND COMPACTED.
- FOR PAVEMENT DETAILS REFER COUNCIL STANDARD SPECIFICATION SS7.
- THE ASPHALT SURFACING SHALL COMPLY WITH COUNCILS STANDARD SPECIFICATION SS8.
- THE DEVIATION FROM A STRAIGHT EDGE PARALLEL TO THE CENTRE LINE OF THE EXISTING ROAD SHALL NOT EXCEED 5 MILLIMETRES.
- FOR STATE CONTROLLED ROADS THE BEDDING ZONES 1, 2 AND 3 SHALL COMPLY WITH THE DETAILS ON THIS DRAWING. BACKFILL AND PAVEMENT SHALL COMPLY WITH REQUIREMENTS OF MAIN ROADS.
- DIMENSIONS ARE IN MILLIMETRES UNLESS SHOWN OTHERWISE.

--	--	--	--	--	--	--	--	--	--	--	--	--	--	--	--	--	--	--	--	--	--	--	--	--	--	--	--	--	--	--	--	--	--	--	--	--	--	--	--	--	--	--	--	--	--	--	--	--	--	--	--	--	--	--	--	--	--	--	--	--	--	--	--	--	--	--	--	--	--	--	--	--	--	--	--	--	--	--	--	--	--	--	--	--	--	--	--	--	--	--	--	--	--	--	--	--	--	--	--	--	--	--	--	--	--	--	--	--	--	--	--	--	--	--	--	--	--	--	--	--	--	--	--	--	--	--	--	--	--	--	--	--	--	--	--	--	--	--	--	--	--	--	--	--	--	--	--	--	--	--	--	--	--	--	--	--	--	--	--	--	--	--	--	--	--	--	--	--	--	--	--	--	--	--	--	--	--	--	--	--	--	--	--	--	--	--	--	--	--	--	--	--	--	--	--	--	--	--	--	--	--	--	--	--	--	--	--	--	--	--	--	--	--	--	--	--	--	--	--	--	--	--	--	--	--	--	--	--	--	--	--	--	--	--	--	--	--	--	--	--	--	--	--	--	--	--	--	--	--	--	--	--	--	--	--	--	--	--	--	--	--	--	--	--	--	--	--	--	--	--	--	--	--	--	--	--	--	--	--	--	--	--	--	--	--	--	--	--	--	--	--	--	--	--	--	--	--	--	--	--	--	--	--	--	--	--	--	--	--	--	--	--	--	--	--	--	--	--	--	--	--	--	--	--	--	--	--	--	--	--	--	--	--	--	--	--	--	--	--	--	--	--	--	--	--	--	--	--	--	--	--	--	--	--	--	--	--	--	--	--	--	--	--	--	--	--	--	--	--	--	--	--	--	--	--	--	--	--	--	--	--	--	--	--	--	--	--	--	--	--	--	--	--	--	--	--	--	--	--	--	--	--	--	--	--	--	--	--	--	--	--	--	--	--	--	--	--	--	--	--	--	--	--	--	--	--	--	--	--	--	--	--	--	--	--	--	--	--	--	--	--	--	--	--	--	--	--	--	--	--	--	--	--	--	--	--	--	--	--	--	--	--	--	--	--	--	--	--	--	--	--	--	--	--	--	--	--	--	--	--	--	--	--	--	--	--	--	--	--	--	--	--	--	--	--	--	--	--	--	--	--	--	--	--	--	--	--	--	--	--	--	--	--	--	--	--	--	--	--	--	--	--	--	--	--	--	--	--	--	--	--	--	--	--	--	--	--	--	--	--	--	--	--	--	--	--	--	--	--	--	--	--	--	--	--	--	--	--	--	--	--	--	--	--	--	--	--	--	--	--	--	--	--	--	--	--	--	--	--	--	--	--	--	--	--	--	--	--	--	--	--	--	--	--	--	--	--	--	--	--	--	--	--	--	--	--	--	--	--	--	--	--	--	--	--	--	--	--	--	--	--	--	--	--	--	--	--	--	--	--	--	--	--	--	--	--	--	--	--	--	--	--	--	--	--	--	--	--	--	--	--	--	--	--	--	--	--	--	--	--	--	--	--	--	--	--	--	--	--	--	--	--	--	--	--	--	--	--	--	--	--	--	--	--	--	--	--	--	--	--	--	--	--	--	--	--	--	--	--	--	--	--	--	--	--	--	--	--	--	--	--	--	--	--	--	--	--	--	--	--	--	--	--	--	--	--	--	--	--	--	--	--	--	--	--	--	--	--	--	--	--	--	--	--	--	--	--	--	--	--	--	--	--	--	--	--	--	--	--	--	--	--	--	--	--	--	--	--	--	--	--	--	--	--	--	--	--	--	--	--	--	--	--	--	--	--	--	--	--	--	--	--	--	--	--	--	--	--	--	--	--	--	--	--	--	--	--	--	--	--	--	--	--	--	--	--	--	--	--	--	--	--	--	--	--	--	--	--	--	--	--	--	--	--	--	--	--	--	--	--	--	--	--	--	--	--	--	--	--	--	--	--	--	--	--	--	--	--	--	--	--	--	--	--	--	--	--	--	--	--	--	--	--	--	--	--	--	--	--	--	--	--	--	--	--	--	--	--	--	--	--	--	--	--	--	--	--	--	--	--	--	--	--	--	--	--	--	--	--	--	--	--	--	--	--	--	--	--	--	--	--	--	--	--	--	--	--	--	--	--	--	--	--	--	--	--	--	--	--	--	--	--	--	--	--	--	--	--	--	--	--	--	--	--	--	--	--	--	--	--	--	--	--	--	--	--	--	--	--	--	--	--	--	--	--	--	--	--	--	--	--	--	--	--	--	--	--	--	--	--	--	--	--	--	--	--	--	--	--	--	--	--	--	--	--	--	--	--	--	--	--	--	--	--	--	--	--	--	--	--	--	--	--	--	--	--	--	--	--	--	--	--	--	--	--	--	--	--	--	--	--	--	--	--	--	--	--	--	--	--	--	--	--	--	--	--	--	--	--	--	--	--	--	--	--	--	--	--	--	--	--	--	--	--	--	--	--	--	--	--	--	--	--	--	--	--	--	--	--	--	--	--	--	--	--	--	--	--	--	--	--	--	--	--	--	--	--	--	--	--	--	--	--	--	--	--	--	--	--	--	--	--	--	--	--	--	--	--	--	--	--	--	--	--	--	--	--	--	--	--	--	--	--	--	--	--	--	--	--	--	--	--	--	--	--	--	--	--	--	--	--	--	--	--	--	--	--	--	--	--	--	--	--	--	--	--	--	--	--	--	--	--	--	--	--	--	--	--	--	--	--	--	--	--	--	--	--	--	--	--	--	--	--	--	--	--	--	--	--	--	--	--	--	--	--	--	--	--	--	--	--	--	--	--	--	--	--	--	--	--	--	--	--	--	--	--	--	--	--	--	--	--	--	--	--	--	--	--	--	--	--	--	--	--	--	--	--	--	--	--	--	--	--	--	--	--	--	--	--	--	--	--	--	--	--	--	--	--	--	--	--	--	--	--	--	--	--	--	--	--	--	--	--	--	--	--	--	--	--	--	--	--	--	--	--	--	--	--	--	--	--	--	--	--	--	--	--	--	--	--	--	--	--	--	--	--	--	--	--	--	--	--	--	--	--	--	--	--	--	--	--	--	--	--	--	--	--	--	--	--	--	--	--	--	--	--	--	--	--	--	--	--	--	--	--	--	--	--	--	--	--

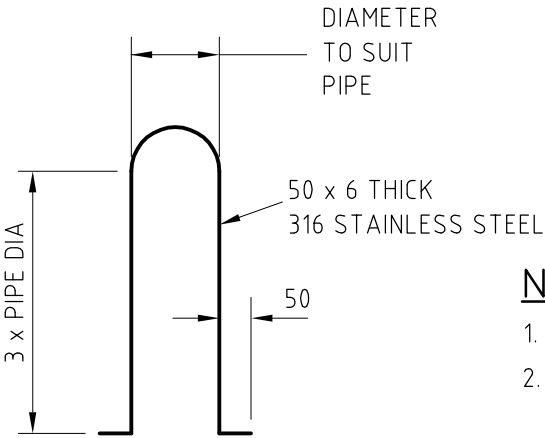
PIPE DIA.	FITTING	MAX. THRUST IN KN	THRUST BLOCK HEIGHT	SOFT CLAY 50 KPa.	MEDIUM CLAY SANDY LOAM 100KPa.	SAND & GRAVEL HARDCLAY 150KPa.	SAND & GRAVEL CEMENTED WITH CLAY 200KPa.	ROCK
100	90° BEND	22.3	400	1150	●	●	●	●
	60° BEND	15.8		800	●	●	●	●
	45° BEND	12.1		650	●	●	●	●
	22.5° BEND	6.15		●	●	●	●	●
	11.25° BEND	3.09		●	●	●	●	●
	TEE OR CLOSED END	15.8		800	●	●	●	●
150	90° BEND	47.1	450	SPECIAL DESIGN	1050	700	●	●
	60° BEND	33.3		1500	750	●	●	●
	45° BEND	25.5		1150	●	●	●	●
	22.5° BEND	13.0		●	●	●	●	●
	11.25° BEND	6.53		●	●	●	●	●
	TEE OR CLOSED END	33.3		1500	750	●	●	●
225	90° BEND	100.7	600	SPECIAL DESIGN	SPECIAL DESIGN	1150	850	700
	60° BEND	71.2		SPECIAL DESIGN	1200	800	●	●
	45° BEND	54.5		SPECIAL DESIGN	950	650	●	●
	22.5° BEND	27.8		950	●	●	●	●
	11.25° BEND	14.0		●	●	●	●	●
	TEE OR CLOSED END	71.2		SPECIAL DESIGN	1200	800	●	●
300	90° BEND	175	700	SPECIAL DESIGN	SPECIAL DESIGN	1700	1250	1050
	60° BEND	124		SPECIAL DESIGN	1800	1200	900	750
	45° BEND	95		SPECIAL DESIGN	1350	900	700	
	22.5° BEND	48		1400	700	●	●	●
	11.25° BEND	24		700	●	●	●	●
	TEE OR CLOSED END	124		SPECIAL DESIGN	1800	1200	900	750
●	INDICATES BLOCK LENGTH OF 600			THRUST BLOCK DIMENSIONS				

THRUST BLOCK DIMENSIONS

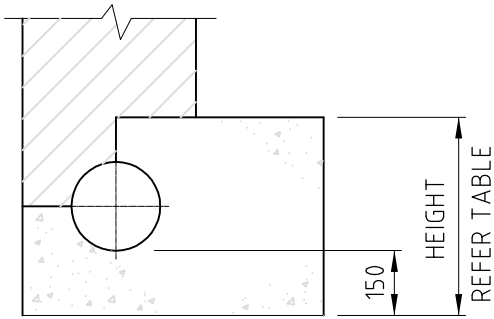


CONCRETE TO EXTEND 150 MIN INTO EACH TRENCH WALL

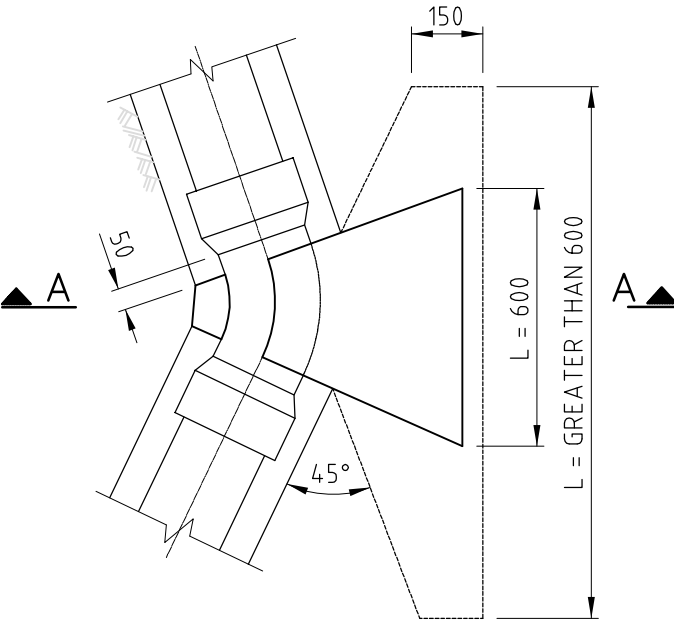
VERTICAL BENDS



SS STRAP



SECTION A-A



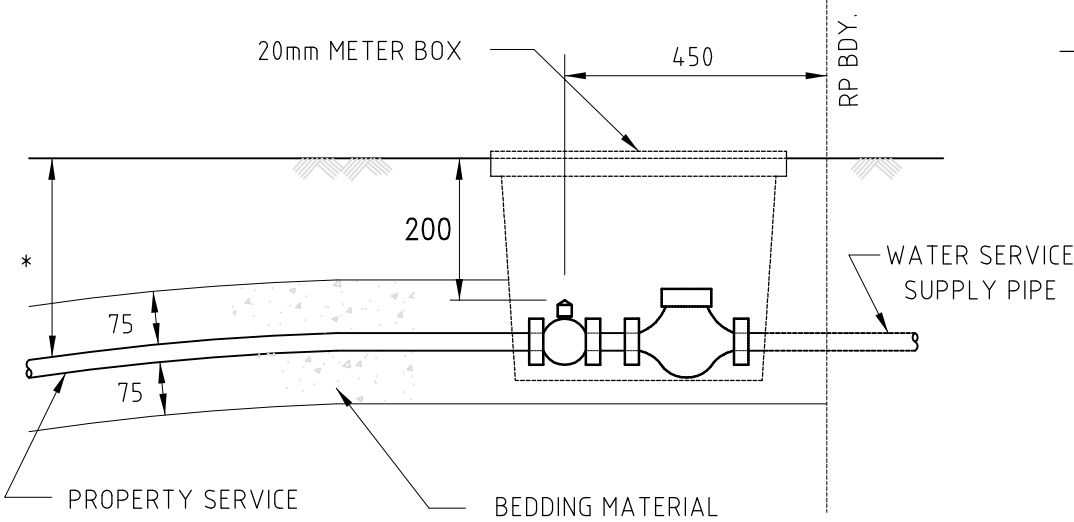
PLAN

NOTES:

1. ALL CONCRETE TO BE GRADE N20.
2. THRUST BLOCKS SHALL BE CAST AGAINST THE UNDISTURBED SIDE OF THE TRENCH. KEEP CONCRETE CLEAR OF SOCKETS, FLANGES & BOLTS.
3. THE TABLE OF DIMENSIONS ASSUME A TEST PRESSURE OF 1350KPa. (135m HEAD) VARIATION FROM THE DIMENSIONS SHOWN WILL BE SUBJECT TO JUSTIFICATION BY CALCULATIONS
4. WHERE THRUST BLOCKS FOR TAPERS ARE REQUIRED REFER R.C.C. STD DWG No. 59602, CONCRETE BULKHEADS.
5. POLYETHYLENE SLEEVING SHALL COMPLY WITH THE REQUIREMENTS OF COUNCIL'S STANDARD SPECIFICATION SS2.
6. DIMENSIONS ARE IN MILLIMETRES UNLESS SHOWN OTHERWISE.

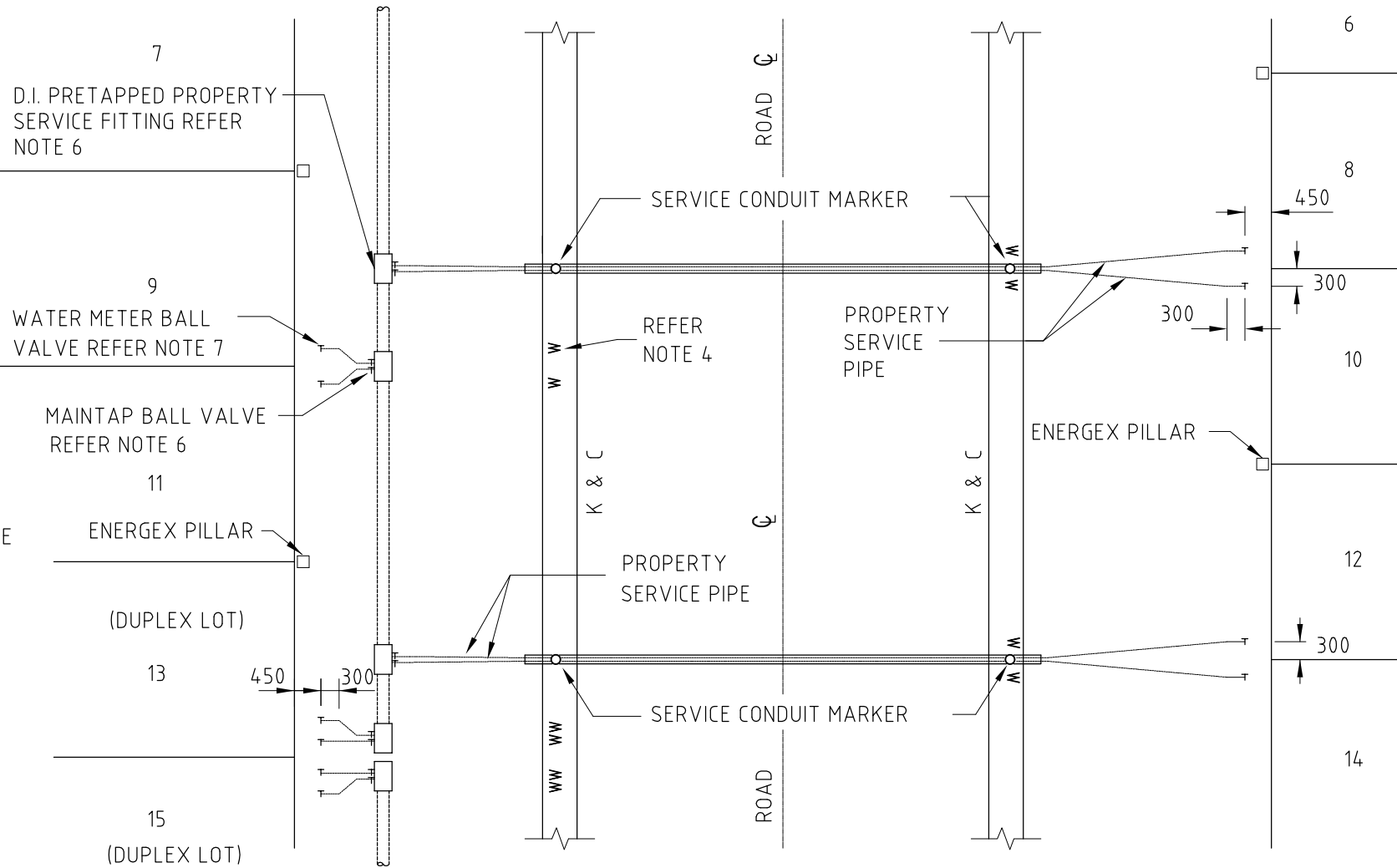
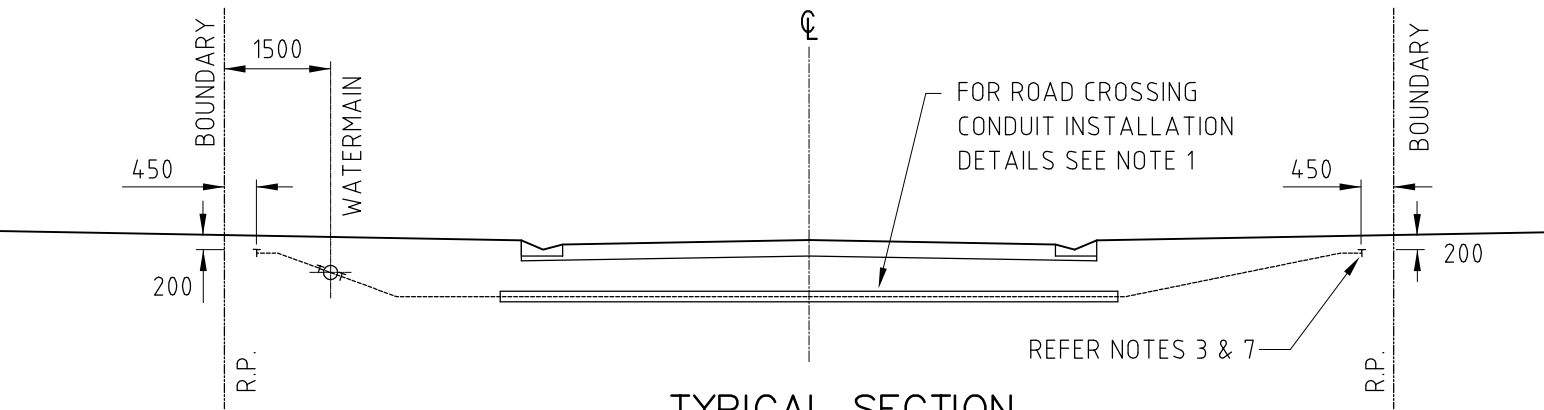
NOTES:

- 1. FOR PROPERTY SERVICE CONDUIT MARKER, CLASS AND INSTALLATION DETAILS REFER R.C.C. STD. DWG. NO. 59212.
- 2. THE PROPERTY SERVICE PRESSURE PIPE SHALL BE POLYETHYLENE TO AS/NZS 4130 SERIES 1 DN25 PN16 SDR9 PE80B.
- 3. BLUE MARKER TAPE SHALL BE ATTACHED TO THE WATER METER BALL VALVE. THE MARKER TAPE SHALL BE BROUGHT VERTICALLY TO THE SURFACE AND LEFT CLEARLY VISIBLE.
- 4. PROPERTY SERVICE STAMPED IDENTIFICATION TAG (35 MIN DIA) TAG MAY BE EITHER BRASS OR STAINLESS STEEL AND MAY BE RETAINED BY A STAINLESS STEEL PIN.
- 5. PROPERTY SERVICE PIPE, BALL VALVES, DUCTILE IRON PRE-TAPPED PROPERTY SERVICE FITTING AND ASSOCIATED FITTINGS SHALL BE JOINTED IN ACCORDANCE WITH THE MANUFACTURERS RECOMMENDATIONS.
- 6. THE MAIN TAP BALL VALVE SHALL BE LEFT IN THE FULLY OPEN POSITION.
- 7. THE WATER METER BALL VALVE SHALL BE LEFT IN THE FULLY CLOSED POSITION.
- 8. THE PROPERTY SERVICE PIPE INCLUDING THE BALL VALVE SHALL BE PERPENDICULAR TO THE FRONT RP BOUNDARY FOR THE LAST 300 OF THE PIPE.
- 9. DIMENSIONS ARE IN MILLIMETRES UNLESS SHOWN OTHERWISE.



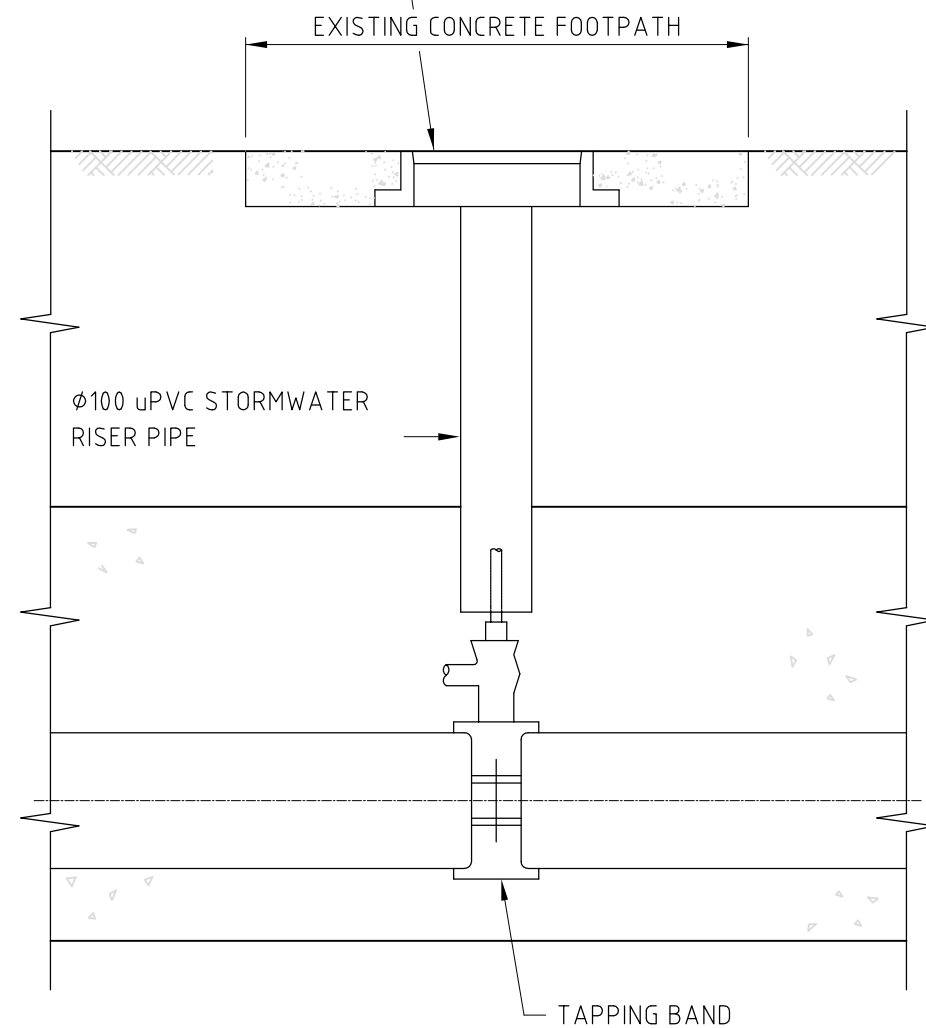
TYPICAL 20mm WATER METER
(INSTALLATION OF BOX AND METER BY COUNCIL)

* GRADE DOWN TO MAIN



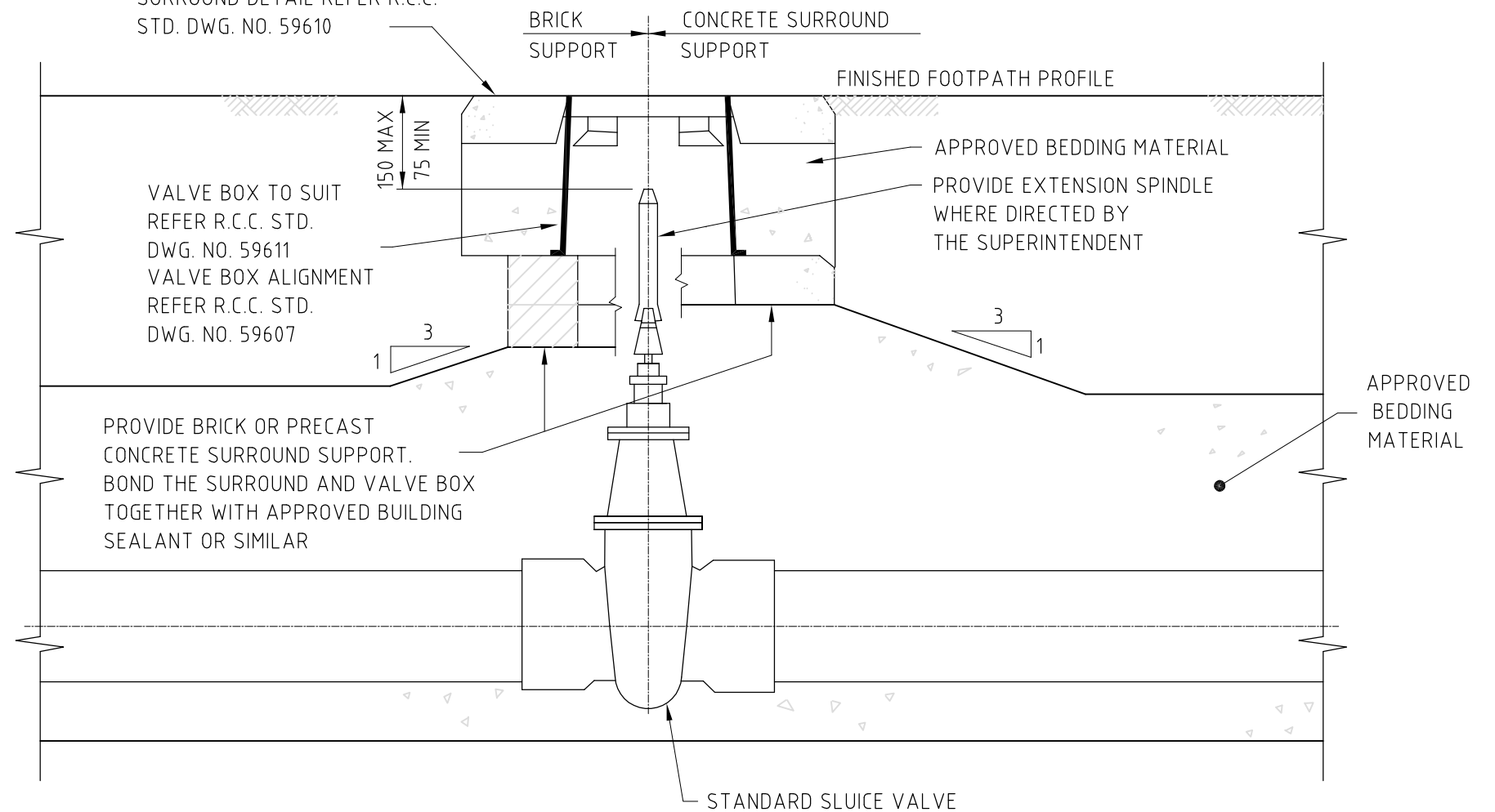
REDCLIFFE CITY COUNCIL Copyright in the whole and every part of this drawing belongs to Redcliffe City Council and may not be used, sold, transferred, copied or reproduced in whole or in part in any manner or form or on any media, to any person other than by agreement with Redcliffe City Council.				SURVEY: DESIGNED: RECOMMENDED:		A3 DATUM: A.H.D. CHECKED: APPROVED:		REDCLIFFE CITY COUNCIL IRENE STREET REDCLIFFE PO BOX 66, REDCLIFFE QLD 4020 PHONE: (07) 3283 0233 FAX: (07) 3883 1723 WEB SITE: www.redcliffe.qld.gov.au		RCC STANDARD DRAWINGS - WATER TYPICAL PROPERTY SERVICE INSTALLATION		DATE: 26.07.06 DRAWING No:	Rv.
A	DATE	ORIGINAL ISSUE	REVISIONS	REC.	APPR.							W-0005	A

FOR PATH BOX DETAIL
REFER RCC STD.
DWG. NO. 59611



EXISTING MAIN
TAPPING BAND CONNECTION
BY COUNCIL

FOR PRECAST CONCRETE
SURROUND DETAIL REFER R.C.C.
STD. DWG. NO. 59610

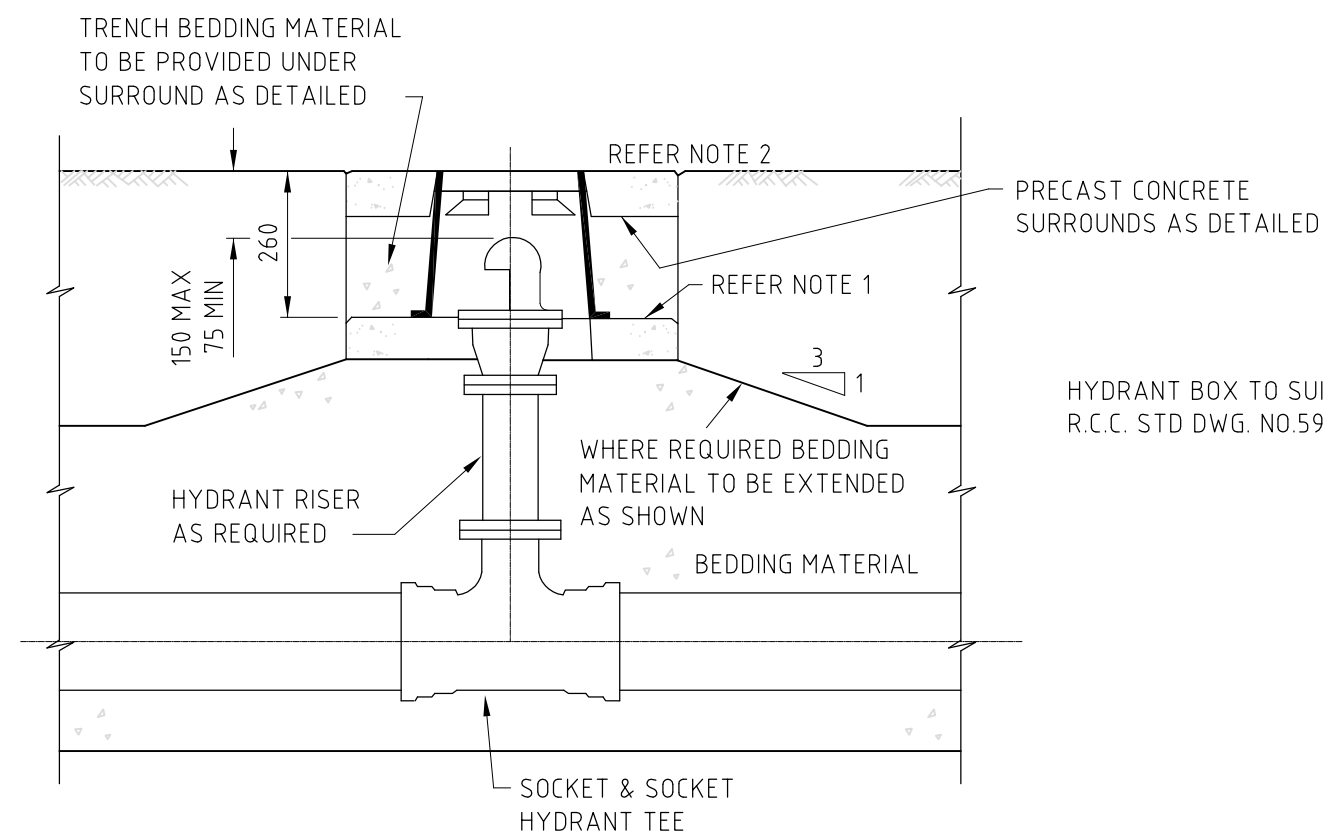


SLUICE VALVE ON LINE

NOTES:

1. ALL CONCRETE SURROUNDS AND SUPPORTS SHALL BE INSTALLED FLUSH WITH THE FINISHED FOOTPATH PROFILE.
2. COUNCIL APPROVED ALTERNATIVES MAY BE UTILISED FOR THE CONCRETE SURROUND/SUPPORT AND FOR THE VALVE BOX.
3. DIMENSIONS ARE IN MILLIMETRES UNLESS SHOWN OTHERWISE.

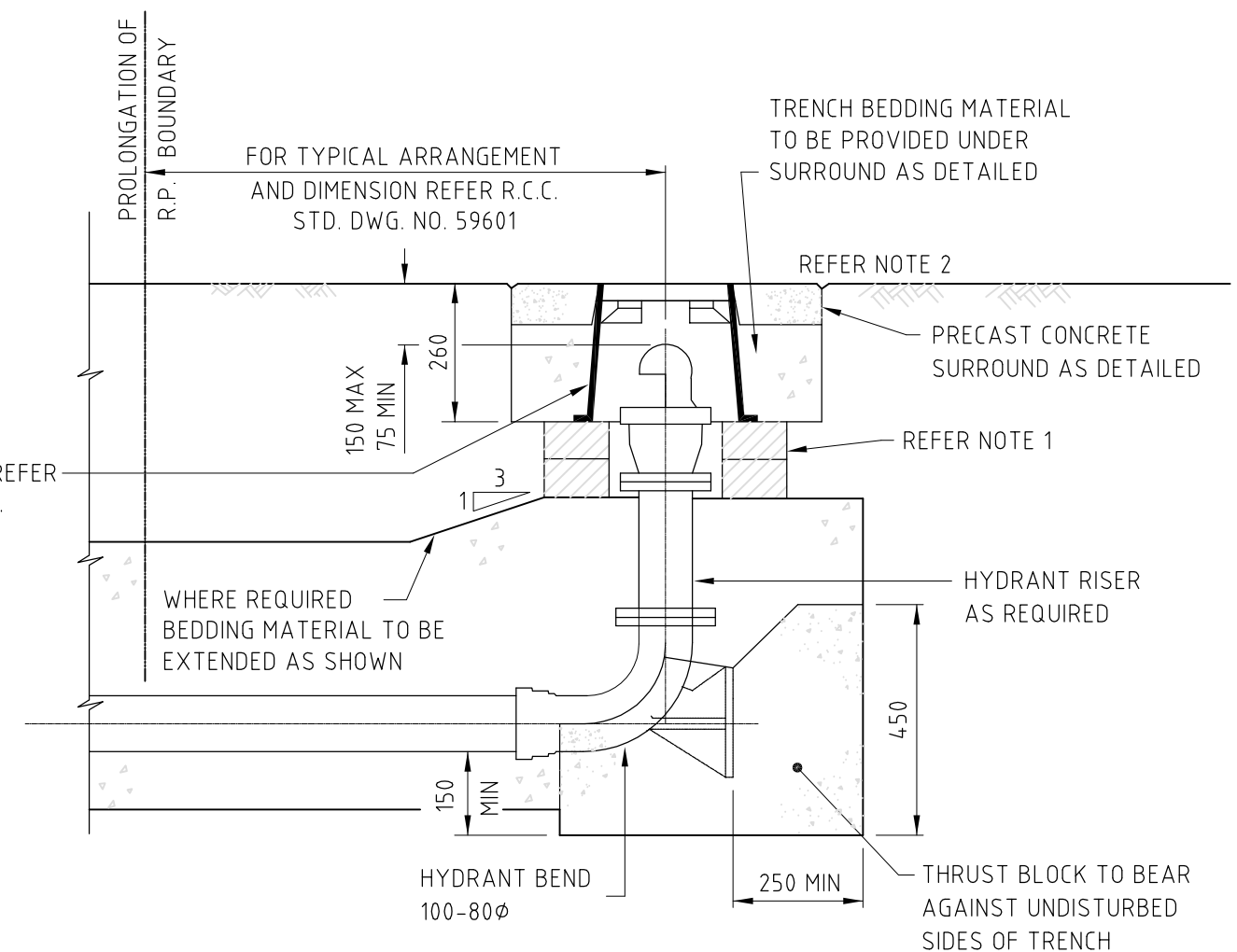
REDCLIFFE CITY COUNCIL Copyright in the whole and every part of this drawing belongs to Redcliffe City Council and may not be used, sold, transferred, copied or reproduced in whole or in part in any manner or form on any media, to any person other than by agreement with Redcliffe City Council.				SURVEY: A3 DATUM: A.H.D.		DESIGNED: CHECKED:		RECOMMENDED: APPROVED:		RECC STANDARD DRAWINGS - WATER		DATE: 26.07.06	Rv.
This document is produced by Redcliffe City Council solely for the benefit of and use by RCC in accordance with the terms of the retailer. Redcliffe City Council does not and shall not assume any responsibility or liability whatsoever to any third party arising out of any use or reliance by third party on the content of this document.				PO BOX 66, REDCLIFFE QLD 4020 PHONE: (07) 3283 0233 FAX: (07) 3883 1723 WEB SITE: www.redcliffe.qld.gov.au		STANDARD SLUICE VALVE DETAILS		DRAWING No: W-0006		A			
A	DATE	ORIGINAL ISSUE	REVISIONS	REC.	APPR.								



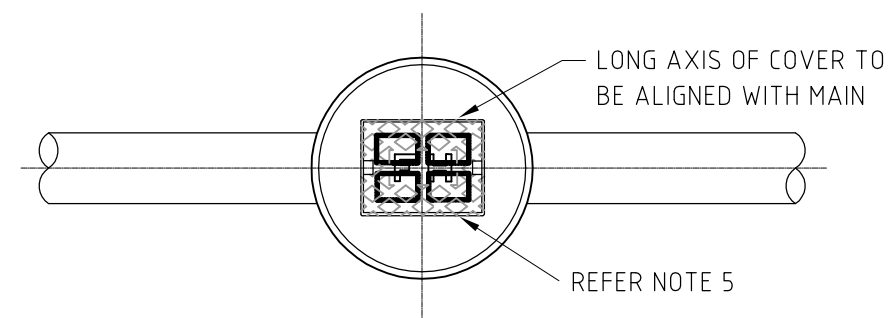
STANDARD HYDRANT ON LINE

NOTES:

1. BOTH PRECAST CONCRETE SURROUNDS/SUPPORTS AND BRICK SUPPORT DETAILS SHOWN ARE ACCEPTABLE.
2. ALL CONCRETE SURROUNDS SHALL BE LAID TO THE FINISHED PROFILE OF THE FOOTPATH VERGE.
3. FOR PRECAST CONCRETE SURROUND/SUPPORT AND BRICK SUPPORT DETAILS REFER R.C.C. STD. DWG. NO. 59610.
4. FOR TYPICAL HYDRANT ARRANGEMENT REFER R.C.C. STD. DWG. NO. 59601.
5. BOX COVERS FOR SWABBING HYDRANTS SHALL HAVE "SH" MARKED ON TOP.
6. COUNCIL APPROVED ALTERNATIVES MAY BE UTILISED FOR THE CONCRETE SURROUND/SUPPORT AND FOR THE HYDRANT BOX.
7. DIMENSIONS ARE IN MILLIMETRES UNLESS SHOWN OTHERWISE.

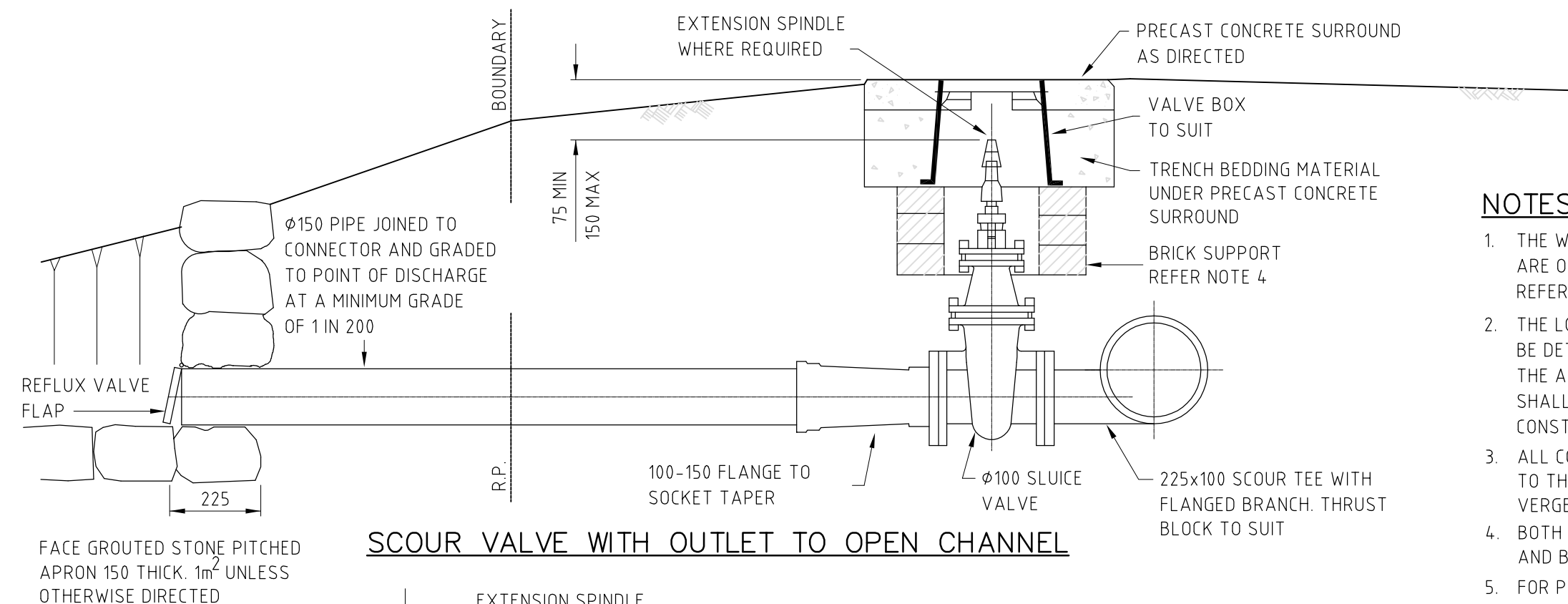


SWABBING HYDRANT AT END OF LINE
AND HEAD OF CUL-DE-SAC

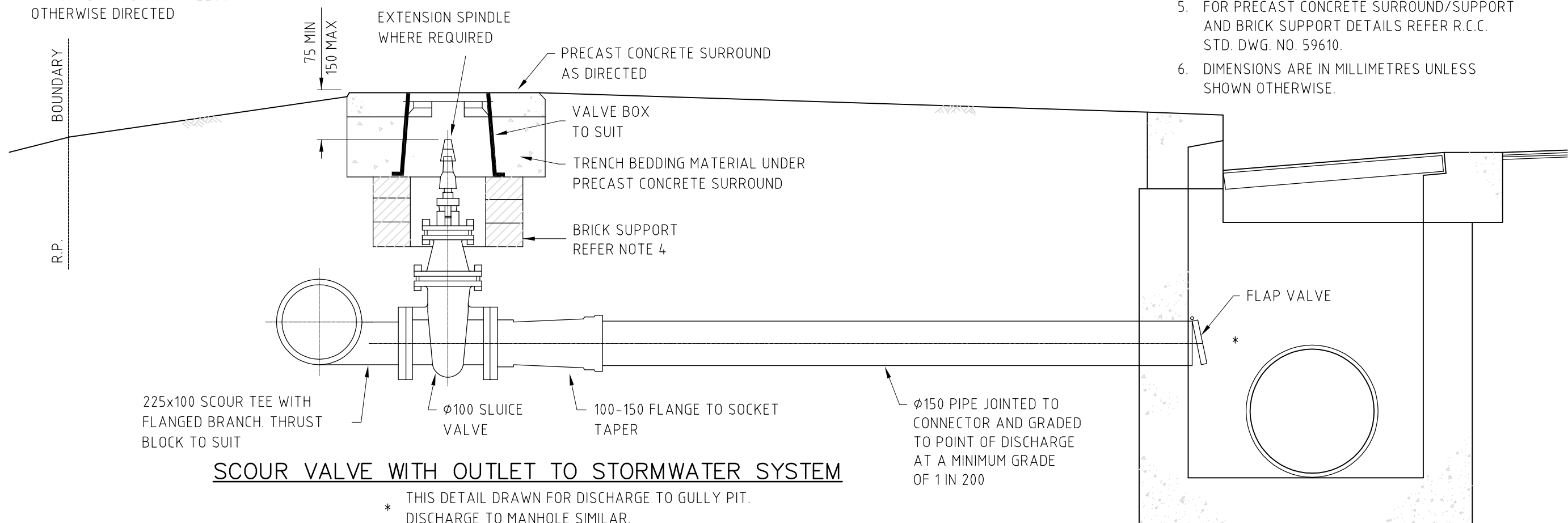


HYDRANT & VALVE BOX ALIGNMENT

[illegible]



SCOUR VALVE WITH OUTLET TO OPEN CHANNEL



SCOUR VALVE WITH OUTLET TO STORMWATER SYSTEM

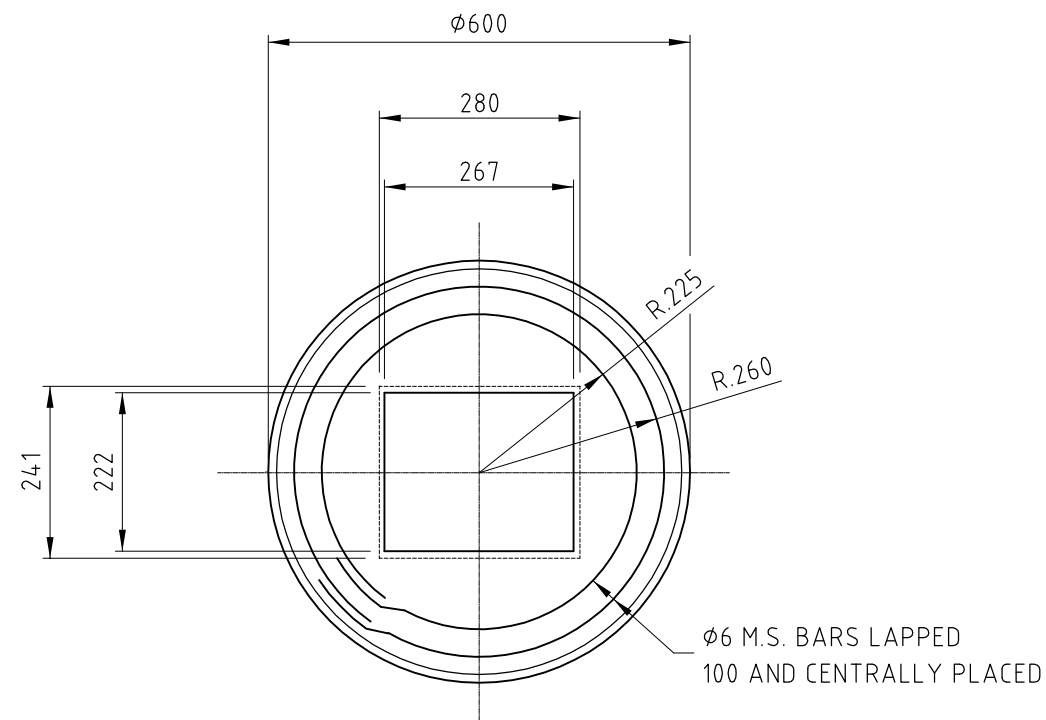
* THIS DETAIL DRAWN FOR DISCHARGE TO GULLY PIT.
DISCHARGE TO MANHOLE SIMILAR.

SCOUR TABLE

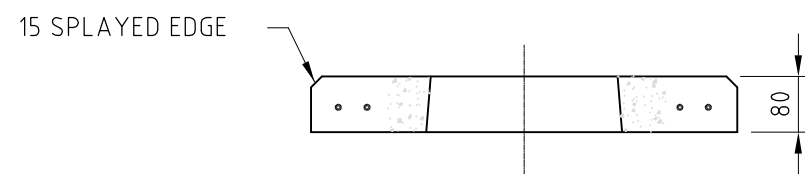
MAIN	SCOUR	OUTLET
225	100	150
300	100	150

NOTES:

1. THE WATERMAIN DETAILS ON THIS DRAWING ARE OF A Ø225. FOR OTHER MAIN SIZES REFER TO THE SCOUR TABLE ABOVE.
2. THE LOCATION OF SCOURING POINTS SHALL BE DETERMINED BY THE SUPERINTENDENT. THE ARRANGEMENT AND DISCHARGE LOCATION SHALL BE CONFIRMED BY COUNCIL PRIOR TO CONSTRUCTION.
3. ALL CONCRETE SURROUNDS SHALL BE LAID TO THE FINISHED PROFILE OF THE FOOTPATH VERGE
4. BOTH PRECAST CONCRETE SURROUND/SUPPORT AND BRICK SUPPORT ARE ACCEPTABLE.
5. FOR PRECAST CONCRETE SURROUND/SUPPORT AND BRICK SUPPORT DETAILS REFER R.C.C. STD. DWG. NO. 59610.
6. DIMENSIONS ARE IN MILLIMETRES UNLESS SHOWN OTHERWISE.

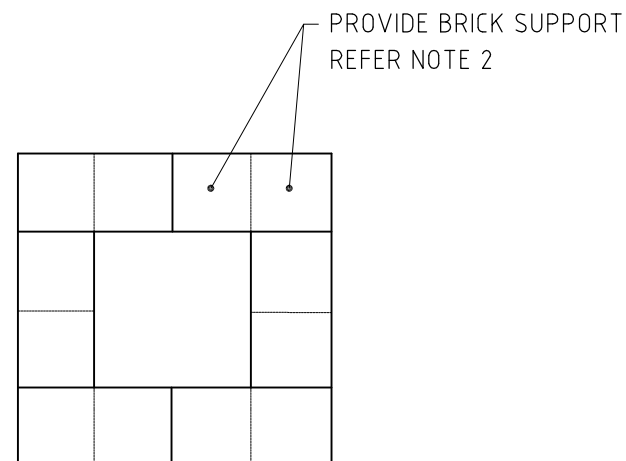


PLAN



SECTION

PRECAST CONCRETE
SURROUND AND SUPPORT DETAILS

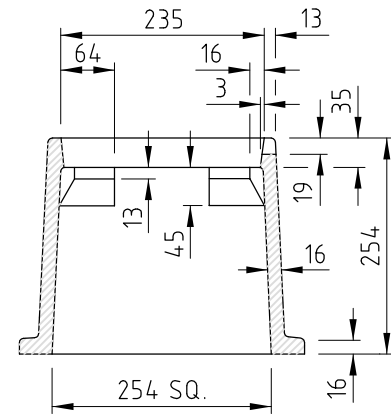


BRICK SUPPORT LAYOUT

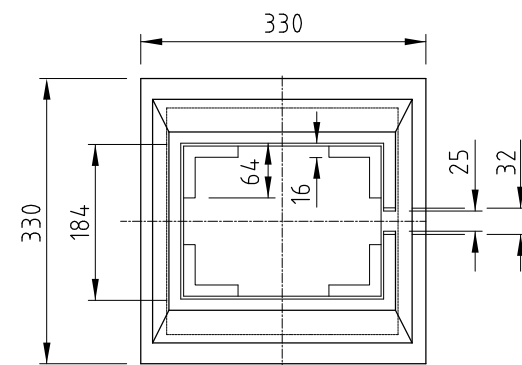
NOTES:

1. BOTH PRECAST CONCRETE SURROUND AND BRICK SUPPORT DETAILS SHOWN ARE ACCEPTABLE.
2. BRICK SUPPORTS SHALL BE A MINIMUM TWO COURSES AND LAID DRY OVER THE BEDDING MATERIAL. APPLY BUILDING SEALANT OR SIMILAR TO BOND BRICKS TO THE VALVE/HYDRANT BOX.
3. FOR HYDRANTS THE CONCRETE SURROUND AND LID SHALL BE PAINTED WITH APPROVED YELLOW REFLECTIVE PAINT.
4. FOR VALVES AND OTHER FITTINGS THE CONCRETE SURROUND AND LID SHALL BE PAINTED WITH APPROVED REFLECTIVE PAINT IN ACCORDANCE WITH THE COLOUR CODE SHOWN ON COUNCIL'S STANDARD DRAWING NO. 59612.
5. CONCRETE TO BE GRADE N25.
6. COUNCIL APPROVED ALTERNATIVES MAY BE UTILISED FOR THE SURROUND AND SUPPORT.
7. DIMENSIONS ARE IN MILLIMETRES UNLESS SHOWN OTHERWISE.

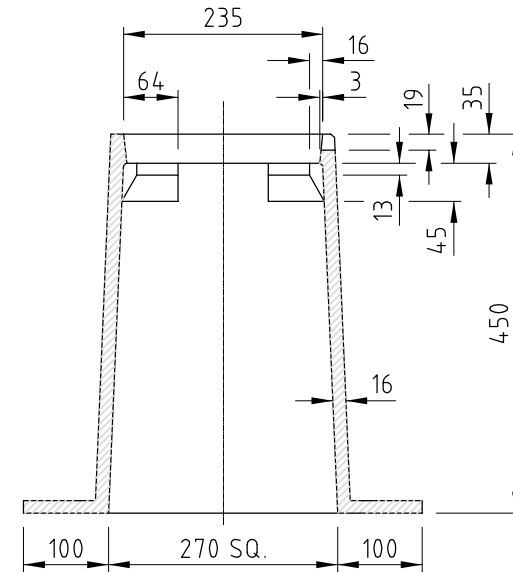
--	--	--	--	--	--	--	--	--	--	--	--	--	--	--	--	--	--	--	--	--	--	--	--	--	--	--	--	--	--	--	--	--	--	--	--	--	--	--	--	--	--	--	--	--	--	--	--	--	--	--	--	--	--	--	--	--	--	--	--	--	--	--	--	--	--	--	--	--	--	--	--	--	--	--	--	--	--	--	--	--	--	--	--	--	--	--	--	--	--	--	--	--	--	--	--	--	--	--	--	--	--	--	--	--	--	--	--	--	--	--	--	--	--	--	--	--	--	--	--	--	--	--	--	--	--	--	--	--	--	--	--	--	--	--	--	--	--	--	--	--	--	--	--	--	--	--	--	--	--	--	--	--	--	--	--	--	--	--	--	--	--	--	--	--	--	--	--	--	--	--	--	--	--	--	--	--	--	--	--	--	--	--	--	--	--	--	--	--	--	--	--	--	--	--	--	--	--	--	--	--	--	--	--	--	--	--	--	--	--	--	--	--	--	--	--	--	--	--	--	--	--	--	--	--	--	--	--	--	--	--	--	--	--	--	--	--	--	--	--	--	--	--	--	--	--	--	--	--	--	--	--	--	--	--	--	--	--	--	--	--	--	--	--	--	--	--	--	--	--	--	--	--	--	--	--	--	--	--	--	--	--	--	--	--	--	--	--	--	--	--	--	--	--	--	--	--	--	--	--	--	--	--	--	--	--	--	--	--	--	--	--	--	--	--	--	--	--	--	--	--	--	--	--	--	--	--	--	--	--	--	--	--	--	--	--	--	--	--	--	--	--	--	--	--	--	--	--	--	--	--	--	--	--	--	--	--	--	--	--	--	--	--	--	--	--	--	--	--	--	--	--	--	--	--	--	--	--	--	--	--	--	--	--	--	--	--	--	--	--	--	--	--	--	--	--	--	--	--	--	--	--	--	--	--	--	--	--	--	--	--	--	--	--	--	--	--	--	--	--	--	--	--	--	--	--	--	--	--	--	--	--	--	--	--	--	--	--	--	--	--	--	--	--	--	--	--	--	--	--	--	--	--	--	--	--	--	--	--	--	--	--	--	--	--	--	--	--	--	--	--	--	--	--	--	--	--	--	--	--	--	--	--	--	--	--	--	--	--	--	--	--	--	--	--	--	--	--	--	--	--	--	--	--	--	--	--	--	--	--	--	--	--	--	--	--	--	--	--	--	--	--	--	--	--	--	--	--	--	--	--	--	--	--	--	--	--	--	--	--	--	--	--	--	--	--	--	--	--	--	--	--	--	--	--	--	--	--	--	--	--	--	--	--	--	--	--	--	--	--	--	--	--	--	--	--	--	--	--	--	--	--	--	--	--	--	--	--	--	--	--	--	--	--	--	--	--	--	--	--	--	--	--	--	--	--	--	--	--	--	--	--	--	--	--	--	--	--	--	--	--	--	--	--	--	--	--	--	--	--	--	--	--	--	--	--	--	--	--	--	--	--	--	--	--	--	--	--	--	--	--	--	--	--	--	--	--	--	--	--	--	--	--	--	--	--	--	--	--	--	--	--	--	--	--	--	--	--	--	--	--	--	--	--	--	--	--	--	--	--	--	--	--	--	--	--	--	--	--	--	--	--	--	--	--	--	--	--	--	--	--	--	--	--	--	--	--	--	--	--	--	--	--	--	--	--	--	--	--	--	--	--	--	--	--	--	--	--	--	--	--	--	--	--	--	--	--	--	--	--	--	--	--	--	--	--	--	--	--	--	--	--	--	--	--	--	--	--	--	--	--	--	--	--	--	--	--	--	--	--	--	--	--	--	--	--	--	--	--	--	--	--	--	--	--	--	--	--	--	--	--	--	--	--	--	--	--	--	--	--	--	--	--	--	--	--	--	--	--	--	--	--	--	--	--	--	--	--	--	--	--	--	--	--	--	--	--	--	--	--	--	--	--	--	--	--	--	--	--	--	--	--	--	--	--	--	--	--	--	--	--	--	--	--	--	--	--	--	--	--	--	--	--	--	--	--	--	--	--	--	--	--	--	--	--	--	--	--	--	--	--	--	--	--	--	--	--	--	--	--	--	--	--	--	--	--	--	--	--	--	--	--	--	--	--	--	--	--	--	--	--	--	--	--	--	--	--	--	--	--	--	--	--	--	--	--	--	--	--	--	--	--	--	--	--	--	--	--	--	--	--	--	--	--	--	--	--	--	--	--	--	--	--	--	--	--	--	--	--	--	--	--	--	--	--	--	--	--	--	--	--	--	--	--	--	--	--	--	--	--	--	--	--	--	--	--	--	--	--	--	--	--	--	--	--	--	--	--	--	--	--	--	--	--	--	--	--	--	--	--	--	--	--	--	--	--	--	--	--	--	--	--	--	--	--	--	--	--	--	--	--	--	--	--	--	--	--	--	--	--	--	--	--	--	--	--	--	--	--	--	--	--	--	--	--	--	--	--	--	--	--	--	--	--	--	--	--	--	--	--	--	--	--	--	--	--	--	--	--	--	--	--	--	--	--	--	--	--	--	--	--	--	--	--	--	--	--	--	--	--	--	--	--	--	--	--	--	--	--	--	--	--	--	--	--	--	--	--	--	--	--	--	--	--	--	--	--	--	--	--	--	--	--	--	--	--	--	--	--	--	--	--	--	--	--	--	--	--	--	--	--	--	--	--	--	--	--	--	--	--	--	--	--	--	--	--	--	--	--	--	--	--	--	--	--	--	--	--	--	--	--	--	--	--	--	--	--	--	--	--	--	--	--	--	--	--	--	--	--	--	--	--	--	--	--	--	--	--	--	--	--	--	--	--	--	--	--	--	--	--	--	--	--	--	--	--	--	--	--	--	--	--	--	--	--	--	--	--	--	--	--	--	--	--	--	--	--	--	--	--	--	--	--	--	--	--	--	--	--	--	--	--	--	--	--	--	--	--	--	--	--	--	--	--	--	--	--	--	--	--	--	--	--	--	--	--	--	--	--	--	--	--	--	--	--	--	--	--	--	--	--	--	--	--	--	--	--	--	--	--	--	--	--	--	--	--	--	--	--	--	--	--	--	--	--	--	--	--	--	--	--	--	--	--	--	--	--	--	--	--	--	--	--	--	--	--	--	--	--	--	--	--	--	--	--	--	--	--	--	--	--	--	--	--	--	--	--	--	--	--	--	--	--	--	--	--	--	--	--	--	--	--	--	--	--	--	--	--	--	--	--	--



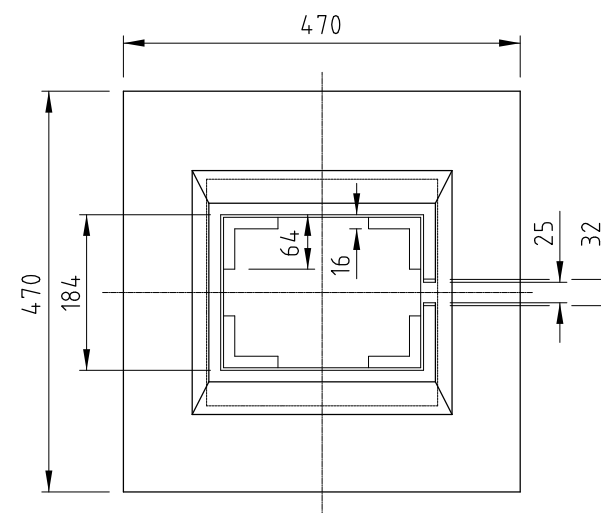
ELEVATION



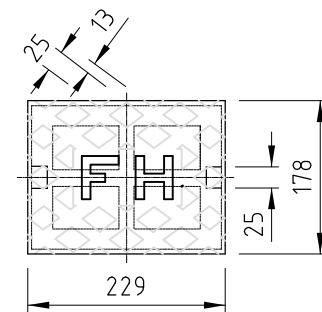
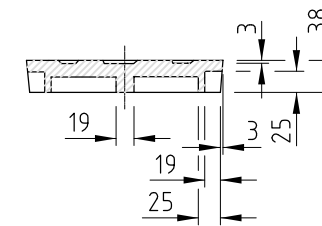
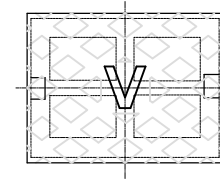
PLAN
TYPE 'A'
REFER NOTE 6.



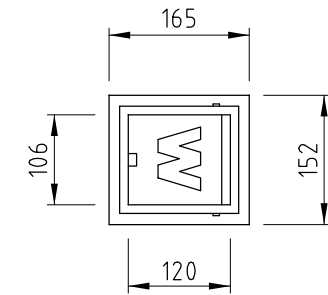
ELEVATION



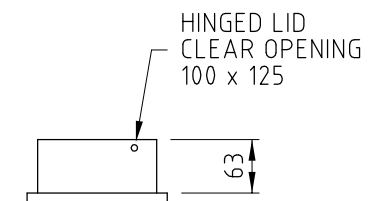
PLAN
TYPE 'B'



COVERS



PLAN



ELEVATION
PATH BOX

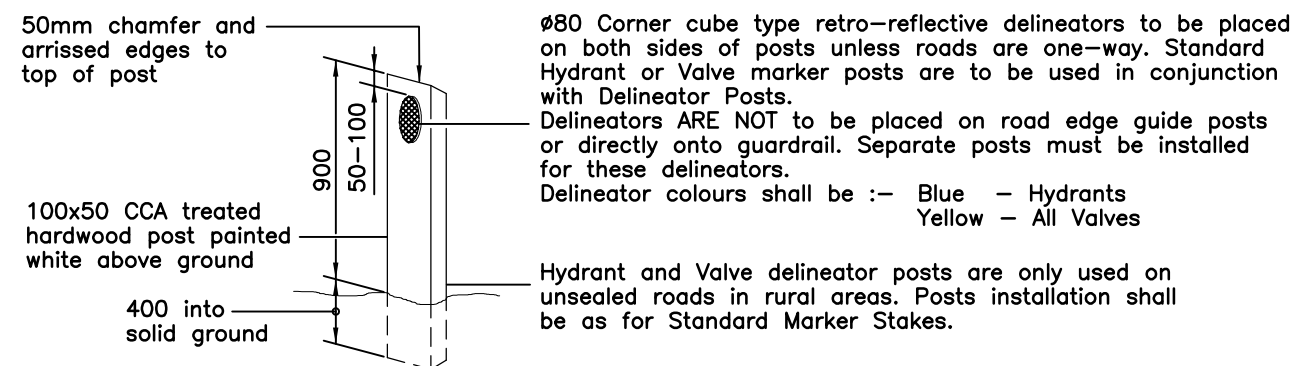
VALVE/HYDRANT BOX NOTES:

1. ALL CAST IRON COMPONENTS SHALL COMPLY WITH AS.1830 AND SHALL BE GRADE T220.
2. ALL DUCTILE IRON COMPONENTS SHALL COMPLY WITH AS.1831 GRADE 400/12.
3. BOXES SHALL BE MANUFACTURED WITH A TOTAL MAXIMUM WEIGHT OF 50kg.
4. TYPE 'A' BOXES SHALL BE PROVIDED AT FIRE HYDRANTS AND VALVE INSTALLATIONS UNLESS DIRECTED OTHERWISE BY THE SUPERINTENDENT.
5. COUNCIL APPROVED ALTERNATIVES MAY BE UTILISED FOR THE TYPE 'A' BOX.
6. A BITUMASTIC BASE MATERIAL SHALL BE APPLIED TO ALL BOXES AND COVERS WHEN THEY ARE IN CLEAN, DRY AND RUST FREE CONDITION. WHEN INSTALLED THE LID AND SURROUND OF THE BOX SHALL BE PAINTED TO THE DETAILS SHOWN IN COUNCIL'S STANDARD DRAWING NO. 59610.
7. DIMENSIONS ARE IN MILLIMETRES UNLESS SHOWN OTHERWISE.

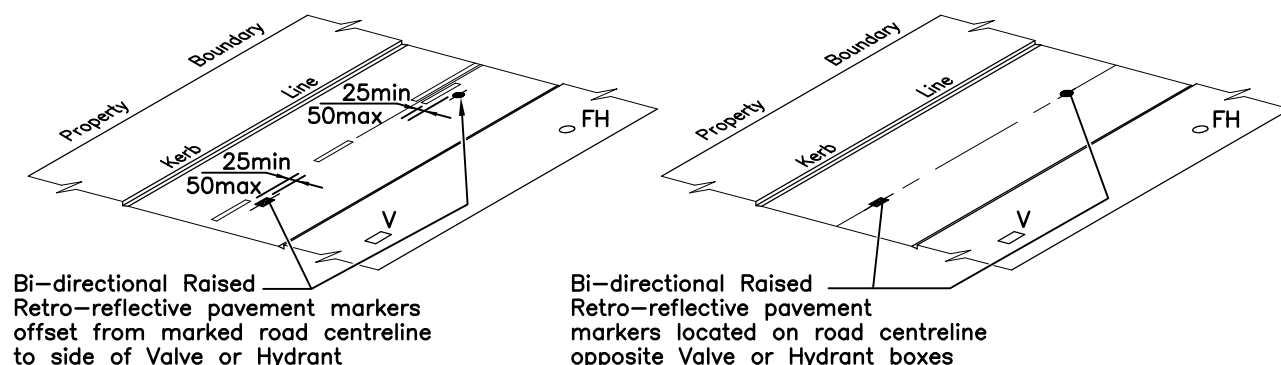
PATH BOX NOTES:

- A. SHALL BE MANUFACTURED FROM DUCTILE IRON, CAST-IRON OR GUNMETAL.
- B. THE SURFACE OF BOX TO BE CHEQUERED.
- C. THE SURFACE TO HAVE THE LETTER 'W' IN A RAISED PATTERN.
- D. LID SHALL BE HINGED WITH PINS NOT LESS THAN $\phi 6$ STAINLESS STEEL.

						REDCLIFFE CITY COUNCIL Copyright in the whole and every part of this drawing belongs to Redcliffe City Council and may not be used, sold, transferred, copied or reproduced in whole or in part in any manner or form or on any media, to any person other than by agreement with Redcliffe City Council.		SURVEY:		A3		DATUM: A.H.D.		 IRENE STREET REDCLIFFE PO BOX 66, REDCLIFFE QLD 4020 PHONE: (07) 3283 0233 FAX: (07) 3883 1723 WEB SITE: www.redcliffe.qld.gov.au		RCC STANDARD DRAWINGS – WATER							
						This document is produced by Redcliffe City Council solely for the benefit of and use by RCC in accordance with the terms of the retailer. Redcliffe City Council does not and shall not assume any responsibility or liability whatsoever to any third party arising out of any use or reliance by third party on the content of this document.		DESIGNED:		CHECKED:		APPROVED:				VALVE AND HYDRANT BOX SUPPORT AND SURROUND DETAILS		DATE: 26.07.06		Rv.			
A		ORIGINAL ISSUE						RECOMMENDED:										DRAWING No: W-0011		A			
Rv.		DATE		REVISIONS		REC.		APPR.															

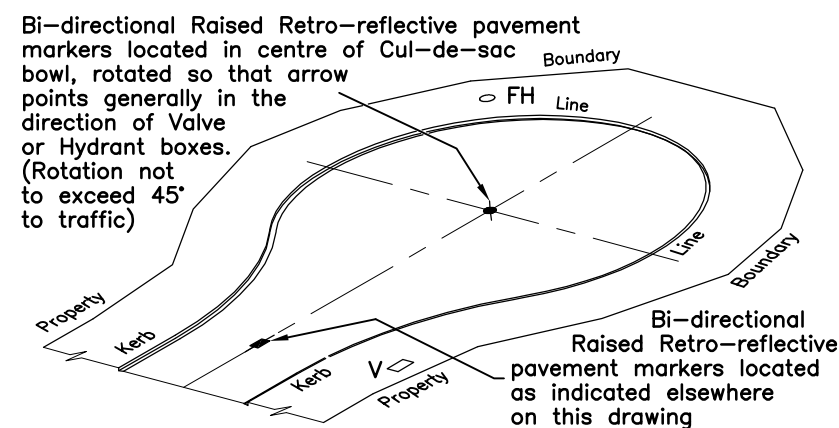


ROAD EDGE HYDRANT AND VALVE DELINEATOR POST – RURAL ROADS

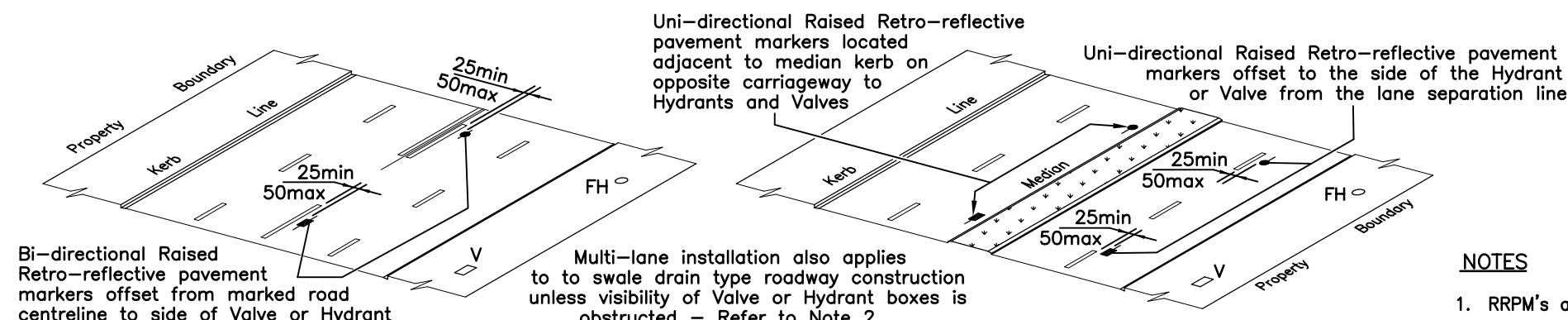


WITH PAVEMENT MARKINGS
WITHOUT PAVEMENT MARKINGS

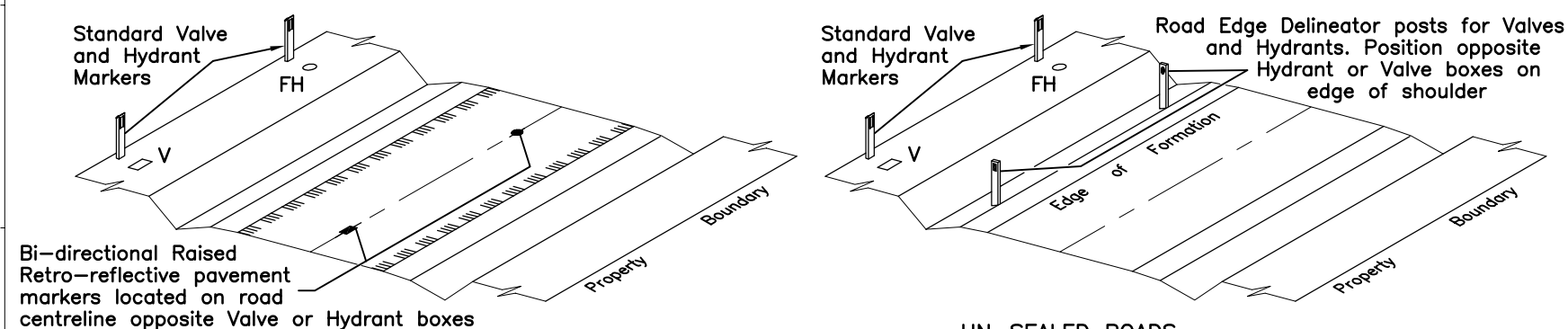
URBAN AND RURAL RESIDENTIAL STREETS OR ROADS



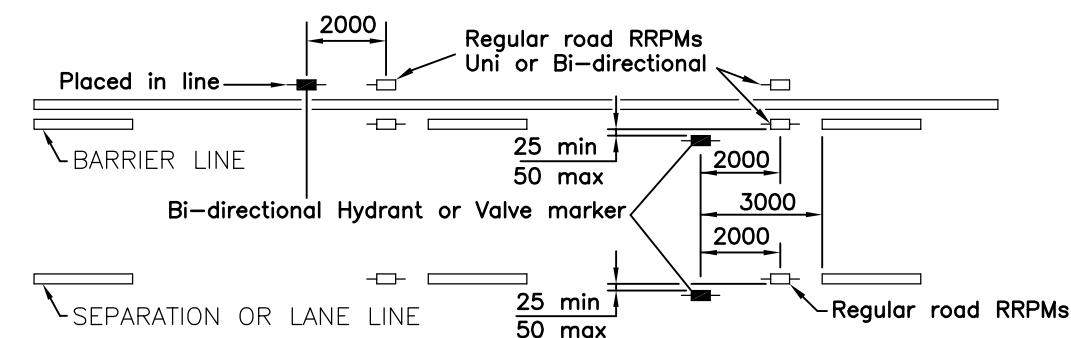
CUL-DE-SAC HEAD



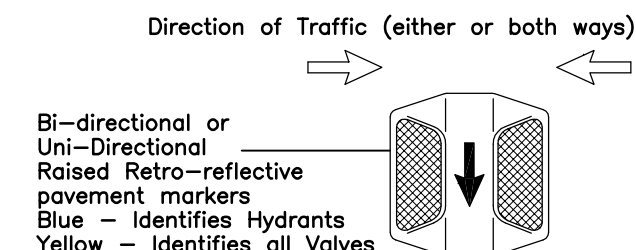
UN-DIVIDED CARRIAGEWAY
MEDIAN DIVIDED DUAL CARRIAGEWAY
MULTI-LANE ROADS



SEALED ROADS – If marked, refer to marker offsets as above
RURAL STREETS OR ROADS (WITHOUT KERB & CHANNEL)



POSITIONS RELATIVE TO LINEMARKING AND ROADWAY RRPM'S



Raised Retro-reflectorised Hydrant and valve markers are to have a direction arrow on top. Arrows are to be of a contrasting colour and protected against removal. Markers are to be installed with the directional arrow indicating the side of the road on which the Hydrant or Valve box is located. Retro-reflective prisms shall face toward oncoming traffic.

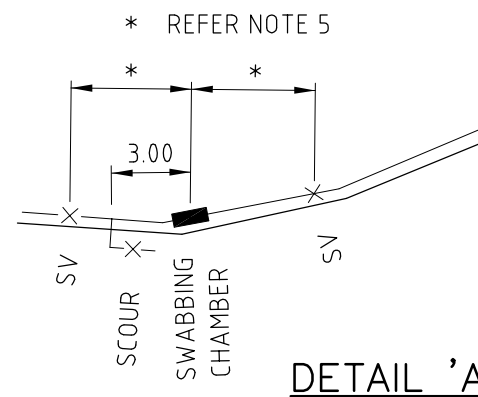
Hydrant, Stop Valve, Scour Valve or Air Valve box to Water Mains

ORIENTATION OF PAVEMENT MARKERS

NOTES

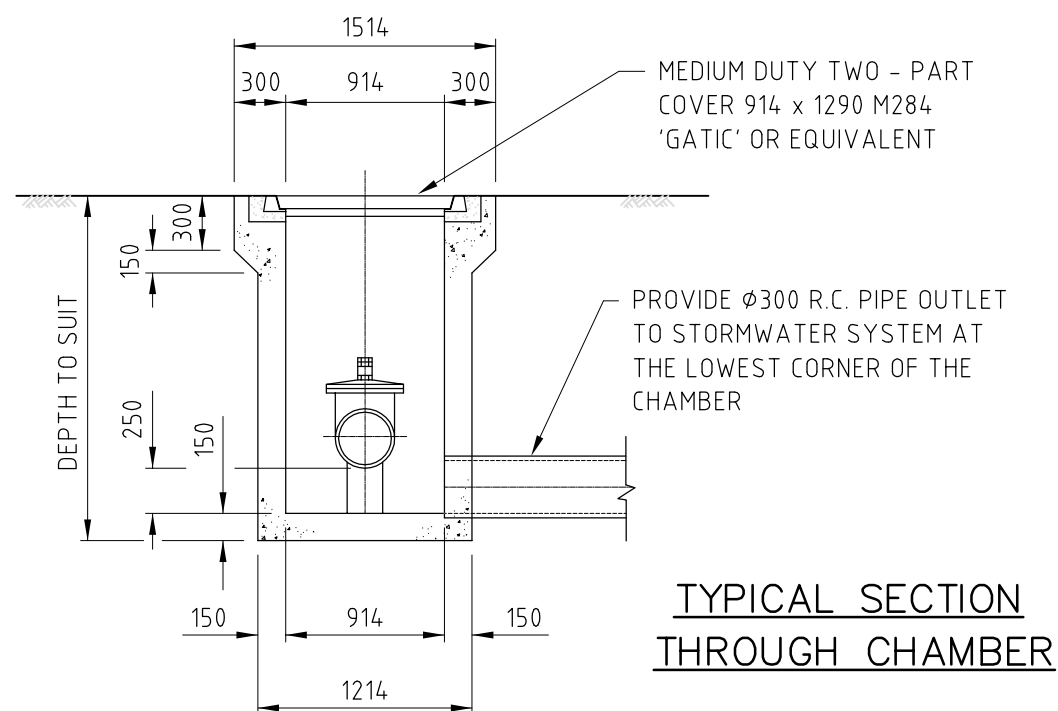
- RRPM's are to be used on roadways where water mains are constructed adjacent the roadway.
- Where visibility to the Hydrant or Valve Box from the roadway may be obstructed (e.g. by grass or steep batters) a Hydrant or Valve Marker Post shall also be installed. Valve and Hydrant marker posts shall be installed on all Rural Roads to supplement road edge delineator posts.
- For roads with more than 2 lanes of travel in one direction, a Hydrant or Valve marker post shall be erected in the median. Pavement Markers are not to be installed. Distance marker plates are to be included showing offset to the Hydrant or Valve.
- Where New Jersey barriers are used on roads with more than 2 lanes of travel in one direction, a single sided Hydrant or Valve Delineator is to be mounted on top of the barrier. Pavement markers are not used in this case.
- Where access to a Hydrant or Valve is not available from an opposite carriageway to the fitting, a pavement marker or other marker is not to be placed for that carriageway.
- Retro-reflective raised pavement markers shall comply with the requirements and Specifications of the Queensland Department of Main Roads, and AS 1906.3.
- Raised pavement markers for Hydrants and Valves are to be installed in accordance with the Queensland Department of Main Roads' Fire Hydrant Indication System Technical Guideline, Sections 1 to 4, and Section 6, Figures 1 through 7.
- Raised Reflectorised Pavement Markers are to be fixed to the road surface by a Stimsonite soft, hot melt bitumastic pad, or approved 2-pack epoxy adhesive suitable for the purpose.

--	--	--	--	--	--	--	--	--	--	--	--	--	--	--	--	--	--	--	--	--	--	--	--	--	--	--	--	--	--	--	--	--	--	--	--	--	--	--	--	--	--	--	--	--	--	--	--	--	--	--	--	--	--	--	--	--	--	--	--	--	--	--	--	--	--	--	--	--	--	--	--	--	--	--	--	--	--	--	--	--	--	--	--	--	--	--	--	--	--	--	--	--	--	--	--	--	--	--	--	--	--	--	--	--	--	--	--	--	--	--	--	--	--	--	--	--	--	--	--	--	--	--	--	--	--	--	--	--	--	--	--	--	--	--	--	--	--	--	--	--	--	--	--	--	--	--	--	--	--	--	--	--	--	--	--	--	--	--	--	--	--	--	--	--	--	--	--	--	--	--	--	--	--	--	--	--	--	--	--	--	--	--	--	--	--	--	--	--	--	--	--	--	--	--	--	--	--	--	--	--	--	--	--	--	--	--	--	--	--	--	--	--	--	--	--	--	--	--	--	--	--	--	--	--	--	--	--	--	--	--	--	--	--	--	--	--	--	--	--	--	--	--	--	--	--	--	--	--	--	--	--	--	--	--	--	--	--	--	--	--	--	--	--	--	--	--	--	--	--	--	--	--	--	--	--	--	--	--	--	--	--	--	--	--	--	--	--	--	--	--	--	--	--	--	--	--	--	--	--	--	--	--	--	--	--	--	--	--	--	--	--	--	--	--	--	--	--	--	--	--	--	--	--	--	--	--	--	--	--	--	--	--	--	--	--	--	--	--	--	--	--	--	--	--	--	--	--	--	--	--	--	--	--	--	--	--	--	--	--	--	--	--	--	--	--	--	--	--	--	--	--	--	--	--	--	--	--	--	--	--	--	--	--	--	--	--	--	--	--	--	--	--	--	--	--	--	--	--	--	--	--	--	--	--	--	--	--	--	--	--	--	--	--	--	--	--	--	--	--	--	--	--	--	--	--	--	--	--	--	--	--	--	--	--	--	--	--	--	--	--	--	--	--	--	--	--	--	--	--	--	--	--	--	--	--	--	--	--	--	--	--	--	--	--	--	--	--	--	--	--	--	--	--	--	--	--	--	--	--	--	--	--	--	--	--	--	--	--	--	--	--	--	--	--	--	--	--	--	--	--	--	--	--	--	--	--	--	--	--	--	--	--	--	--	--	--	--	--	--	--	--	--	--	--	--	--	--	--	--	--	--	--	--	--	--	--	--	--	--	--	--	--	--	--	--	--	--	--	--	--	--	--	--	--	--	--	--	--	--	--	--	--	--	--	--	--	--	--	--	--	--	--	--	--	--	--	--	--	--	--	--	--	--	--	--	--	--	--	--	--	--	--	--	--	--	--	--	--	--	--	--	--	--	--	--	--	--	--	--	--	--	--	--	--	--	--	--	--	--	--	--	--	--	--	--	--	--	--	--	--	--	--	--	--	--	--	--	--	--	--	--	--	--	--	--	--	--	--	--	--	--	--	--	--	--	--	--	--	--	--	--	--	--	--	--	--	--	--	--	--	--	--	--	--	--	--	--	--	--	--	--	--	--	--	--	--	--	--	--	--	--	--	--	--	--	--	--	--	--	--	--	--	--	--	--	--	--	--	--	--	--	--	--	--	--	--	--	--	--	--	--	--	--	--	--	--	--	--	--	--	--	--	--	--	--	--	--	--	--	--	--	--	--	--	--	--	--	--	--	--	--	--	--	--	--	--	--	--	--	--	--	--	--	--	--	--	--	--	--	--	--	--	--	--	--	--	--	--	--	--	--	--	--	--	--	--	--	--	--	--	--	--	--	--	--	--	--	--	--	--	--	--	--	--	--	--	--	--	--	--	--	--	--	--	--	--	--	--	--	--	--	--	--	--	--	--	--	--	--	--	--	--	--	--	--	--	--	--	--	--	--	--	--	--	--	--	--	--	--	--	--	--	--	--	--	--	--	--	--	--	--	--	--	--	--	--	--	--	--	--	--	--	--	--	--	--	--	--	--	--	--	--	--	--	--	--	--	--	--	--	--	--	--	--	--	--	--	--	--	--	--	--	--	--	--	--	--	--	--	--	--	--	--	--	--	--	--	--	--	--	--	--	--	--	--	--	--	--	--	--	--	--	--	--	--	--	--	--	--	--	--	--	--	--	--	--	--	--	--	--	--	--	--	--	--	--	--	--	--	--	--	--	--	--	--	--	--	--	--	--	--	--	--	--	--	--	--	--	--	--	--	--	--	--	--	--	--	--	--	--	--	--	--	--	--	--	--	--	--	--	--	--	--	--	--	--	--	--	--	--	--	--	--	--	--	--	--	--	--	--	--	--	--	--	--	--	--	--	--	--	--	--	--	--	--	--	--	--	--	--	--	--	--	--	--	--	--	--	--	--	--	--	--	--	--	--	--	--	--	--	--	--	--	--	--	--	--	--	--	--	--	--	--	--	--	--	--	--	--	--	--	--	--	--	--	--	--	--	--	--	--	--	--	--	--	--	--	--	--	--	--	--	--	--	--	--	--	--	--	--	--	--	--	--	--	--	--	--	--	--	--	--	--	--	--	--	--	--	--	--	--	--	--	--	--	--	--	--	--	--	--	--	--	--	--	--	--	--	--	--	--	--	--	--	--	--	--	--	--	--	--	--	--	--	--	--	--	--	--	--	--	--	--	--	--	--	--	--	--	--	--	--	--	--	--	--	--	--	--	--	--	--	--	--	--	--	--	--	--	--	--	--	--	--	--	--	--	--	--	--	--	--	--	--	--	--	--	--	--	--	--	--	--	--	--	--	--	--	--	--	--	--	--	--	--	--	--	--	--	--	--	--	--	--	--	--	--	--	--	--	--	--	--	--	--	--	--	--	--	--	--	--	--	--	--	--	--	--	--	--	--	--	--	--	--	--	--	--	--	--	--	--	--	--	--	--	--	--	--	--	--	--	--	--	--	--	--	--	--	--	--	--	--	--	--	--	--	--	--	--	--	--	--	--	--	--	--	--	--	--	--	--	--	--	--	--	--	--	--	--	--	--	--	--	--	--	--	--	--	--	--	--	--	--	--	--	--	--	--	--	--	--	--	--	--	--	--	--	--	--	--	--	--	--	--	--	--	--



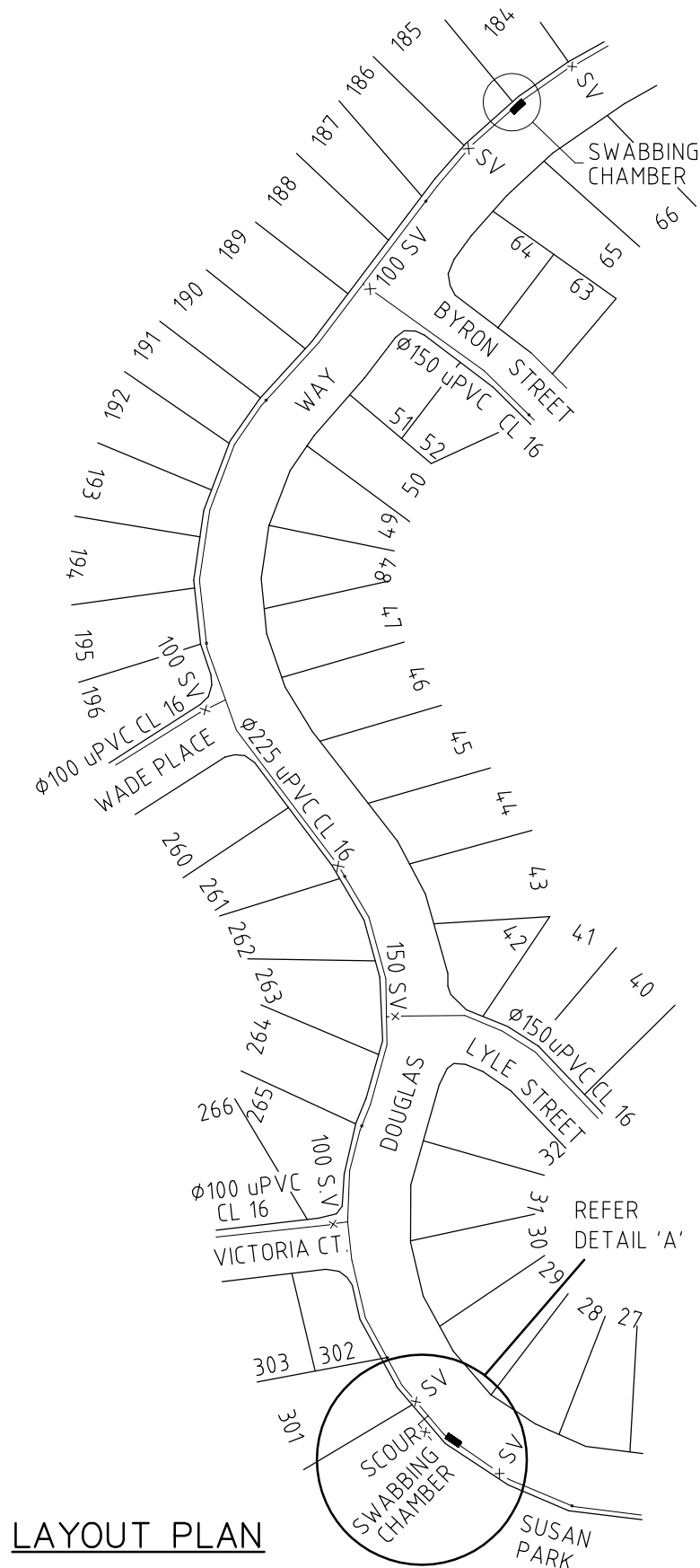
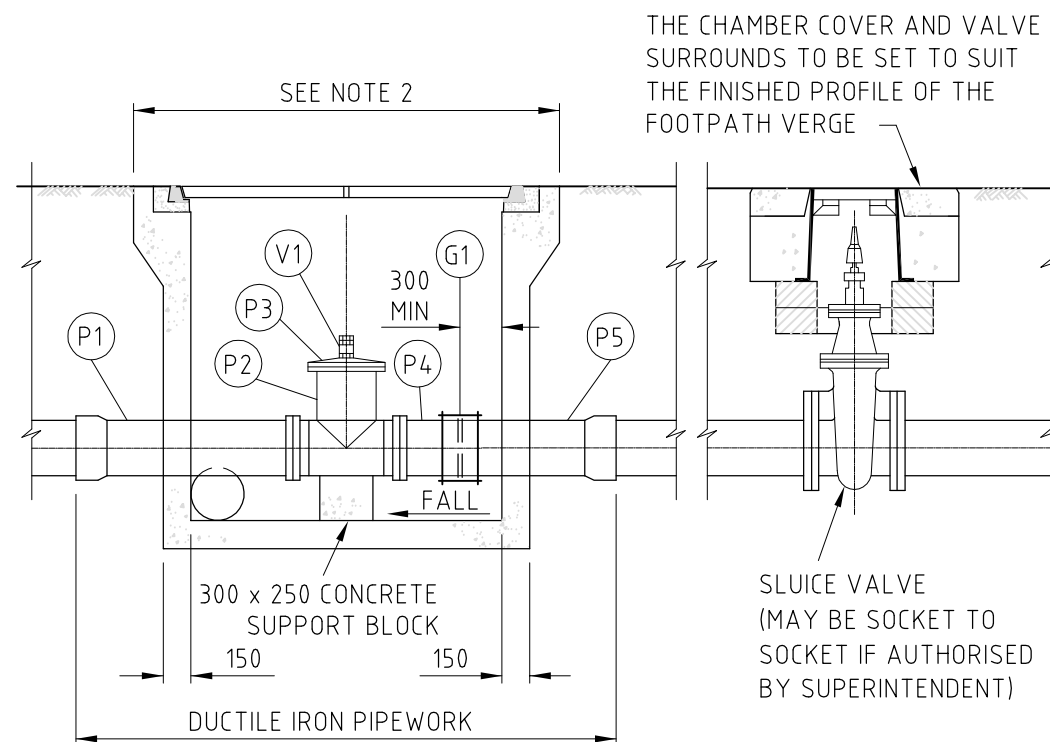
PIPEWORK SCHEDULE

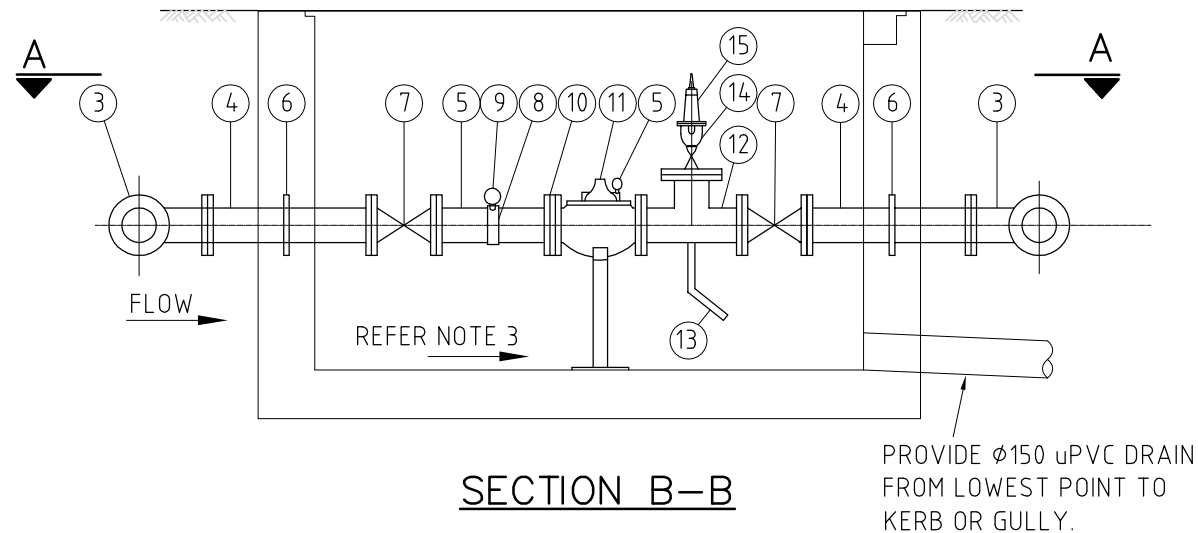
ITEM	DESCRIPTION
P1	SOCKET/FLANGE PIPE x 1000 LONG
P2	FLANGE/FLANGE TEE WITH FLANGED BRANCH
P3	BLANK FLANGE TAPPED CENTRALLY Ø50 B.S.P.
P4	FLANGE/SPIGOT PIPE x 500 LONG
P5	SPIGOT/SOCKET PIPE
V1	SCREWED BALL VALVE WITH HEXAGONAL NIPPLES
G1	GIBALT JOINT ELONGATED



NOTES:

1. CONCRETE TO BE GRADE N25.
2. THE PIT LENGTH SHALL SUIT THE REQUIRED COMPONENTS AND PROVIDE ADEQUATE AREA FOR MAINTENANCE AS DIRECTED BY THE SUPERINTENDENT.
3. WHERE SWABBING CHAMBERS AND SCOURS ADJOIN EACH OTHER (ie AT LOW POINTS) A COMMON PIPE OUTLET MAY BE PROVIDED AS DETAILED ON THE APPROVED ENGINEERING DRAWINGS OR AS DIRECTED BY THE SUPERINTENDENT.
4. WHERE THE MAIN IS LAID DEEPER THAN THE STANDARD DEPTH, THE SWABBING CHAMBER STRUCTURAL CONSTRUCTION SHALL BE AS DETAILED ON THE APPROVED ENGINEERING DRAWINGS.
5. SLUISE VALVES SHALL GENERALLY BE LOCATED OPPOSITE COMMON PROPERTY BOUNDARIES BETWEEN 5m TO 25m EITHER SIDE OF THE SWABBING CHAMBER.
6. DIMENSIONS ARE IN MILLIMETRES UNLESS SHOWN OTHERWISE.





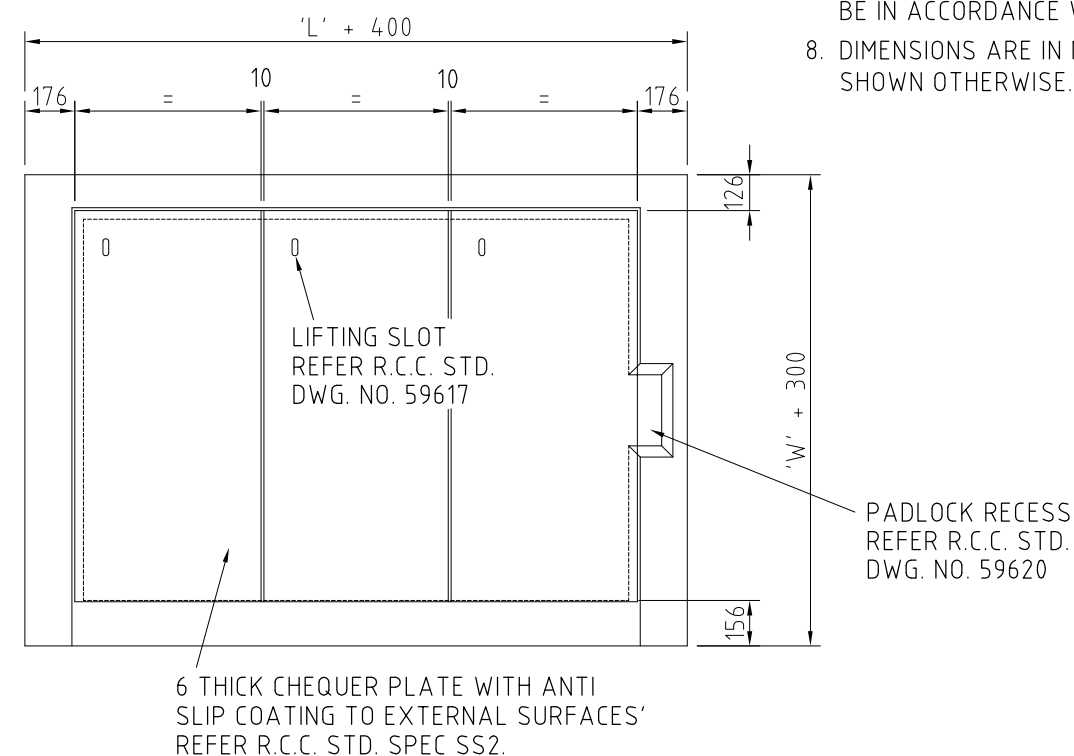
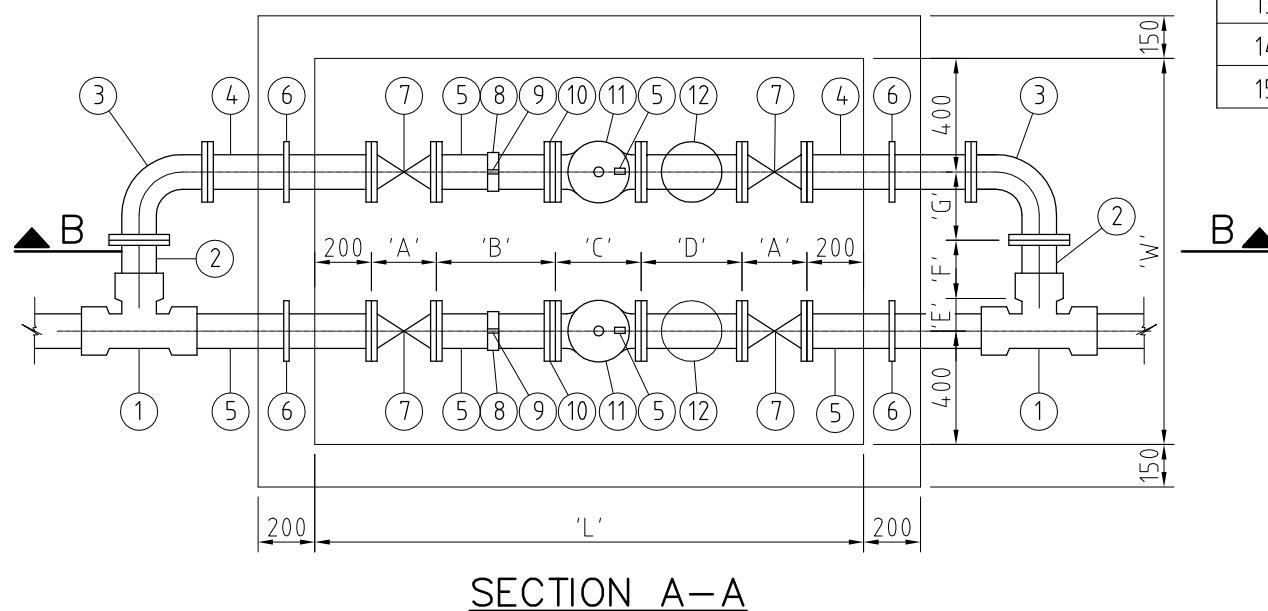
MARK	DESCRIPTION
1	SOCKETED TEE
2	CONNECTOR - FLANGE TO SPIGOT
3	FLANGED 90° BEND
4	FLANGED DICL PIPE 575 LONG
5	FLANGE TO SPIGOT PIPE LENGTH TO SUIT
6	THRUST FLANGE
7	SLUICE VALVE - RESILIENT SEATED
8	TAPPING BAND
9	PRESSURE GAUGE
10	DISMANTLING JOINT - NON THRUST TYPE
11	PRESSURE REDUCING VALVE (REFER NOTE 6)
12	FLANGED TEE WITH 100 NOM BORE, FLANGED BRANCH, BLANK FLANGE CAPPED AND 50 BSP TAPPED.
13	DROP PIPE (OFF 12)
14	50° GATE VALVE
15	50 QUICK PRESSURE RELIEF VALVE

MARK	DIMENSION
'A'	
'B'	
'C'	
'D'	
'A'	
	400
'L'	

MARK	DIMENSION
'E'	
'F'	
'G'	
	800
'W'	

NOTES:

- THIS DRAWING SHOULD BE READ IN CONJUNCTION WITH THE COVER DETAILS SHOWN ON R.C.C. STD. DWG. NO'S 59618 TO 59620.
- ALL COMPONENTS OF THE PRESSURE REDUCING EQUIPMENT SHALL BE OF A TYPE AND MANUFACTURE AS DETAILED ON THE APPROVED ENGINEERING DRAWINGS.
- CHAMBER FLOOR TO BE SHAPED TO PROVIDE A MINIMUM FALL TOWARDS DRAIN FROM ALL DIRECTIONS OF 1 IN 20
- ALL CONCRETE IN CHAMBER SHALL BE N25.
- A BYPASS LINE INCLUDING A PRESSURE REDUCING VALVE SHALL BE PROVIDED FOR MAINS Ø100 OR GREATER AS DETAILED ON THE APPROVED ENGINEERING DRAWINGS.
- PRESSURE REDUCING VALVE (PRV) TO BE A DIAPHRAGM OPERATION FORMAT. PISTON OPERATED VALVES ARE NOT PERMITTED. VALVES SHALL BE A MINIMUM OF 100 FLANGED OF THE BERMAID MODEL 420 OR AMIAD DOROT MODEL 77 (2 WAY SERIES) OR SIMILAR DIAPHRAGM VALVE.
- TYPICAL 150 PRV ARRANGEMENT SHALL BE A MINIMUM OF 100 FLANGED PRV ON BOTH LINES AND BE IN ACCORDANCE WITH NOTE 6.
- DIMENSIONS ARE IN MILLIMETRES UNLESS SHOWN OTHERWISE.



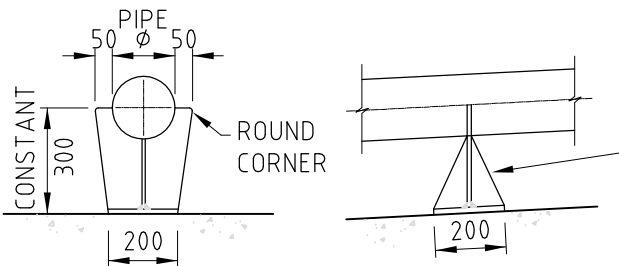
PRESSURE REDUCING VALVE DETAILS

INLET PRESSURE	
OUTLET PRESSURE	
FLOW RATE	
VALVE MAKE & MODEL	

REDCLIFFE CITY COUNCIL Copyright in the whole and every part of this drawing belongs to Redcliffe City Council and may not be used, sold, transferred, copied or reproduced in whole or in part in any manner or form on any media, to any person other than by agreement with Redcliffe City Council.				SURVEY: A3 DATUM: A.H.D. DESIGNED: CHECKED: RECOMMENDED: APPROVED:		REDCLIFFE CITY COUNCIL IRENE STREET REDCLIFFE PO BOX 66, REDCLIFFE QLD 4020 PHONE: (07) 3283 0233 FAX: (07) 3883 1723 WEB SITE: www.redcliffe.qld.gov.au		RCC STANDARD DRAWINGS - WATER STANDARD WATER SUPPLY PUMP STATIONS		DATE: 26.07.06 DRAWING No: W-0014		Rv. A
This document is produced by Redcliffe City Council solely for the benefit of and use by RCC in accordance with the terms of the contract. Redcliffe City Council does not and shall not assume any responsibility or liability whatsoever to any third party arising out of any use or reliance by third party on the content of this document.												
A	DATE	ORIGINAL ISSUE	REVISIONS	REC.	APPR.							

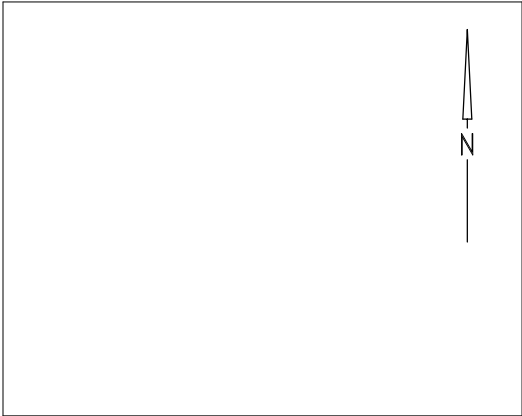
MARK	DESCRIPTION	DIA	NO OF
1	FLANGE - FLANGE - FLANGE TEE PIECE		2
2	FLANGE - FLANGE 90° BEND		2
3	FLANGED ASSEMBLY JOINT		2
4	FLANGE PLAIN PIPE OF LENGTH TO SUIT		1
5	FLANGE & PLAIN PIPE 1200 LONG		1
6	FLANGE - FLANGE CONCENTRIC TAPER ϕ ϕ		4
7	FLANGE & PLAIN PIPE 700 LONG		2
8	THRUST FLANGE		2
9	FLANGE - FLANGE REFLUX VALVE *		2
10	FLANGE - FLANGE SLUICE VALVE		4
11	PUMP AS DETAILED		2
12	PRESSURE GAUGE (SEE NOTE 9)		2
13	25 ϕ AIR VALVE ATOP 25 ϕ BALL/GATE VALVE		2

* REFLUX VALVE TO INCORPORATE COUNTERWEIGHT AND EXTENDED SPINDLE



PUMP CRADLE SUPPORT DETAIL

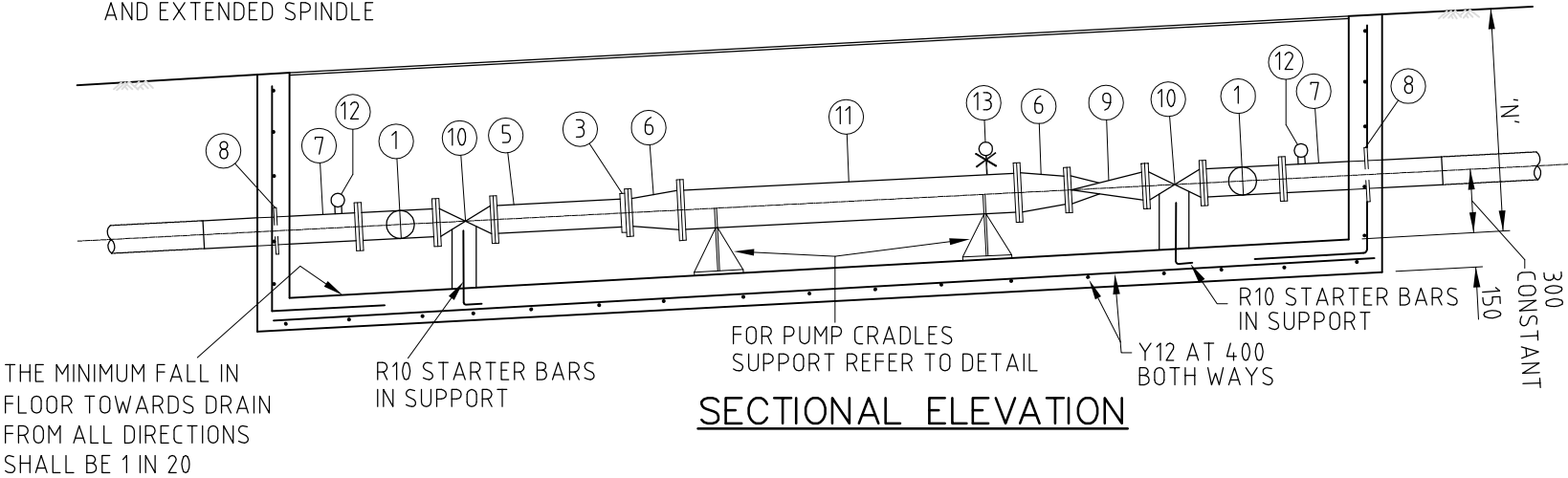
FABRICATED SUPPORT CRADLE FROM 10 ϕ . CONTINUOUS FILLET WELD. ALL COMPONENTS TO BE HOT DIP GALVANISED AFTER FABRICATION. 3 REINFORCED RUBBER BEARING PAD TO CRADLE SURFACE.



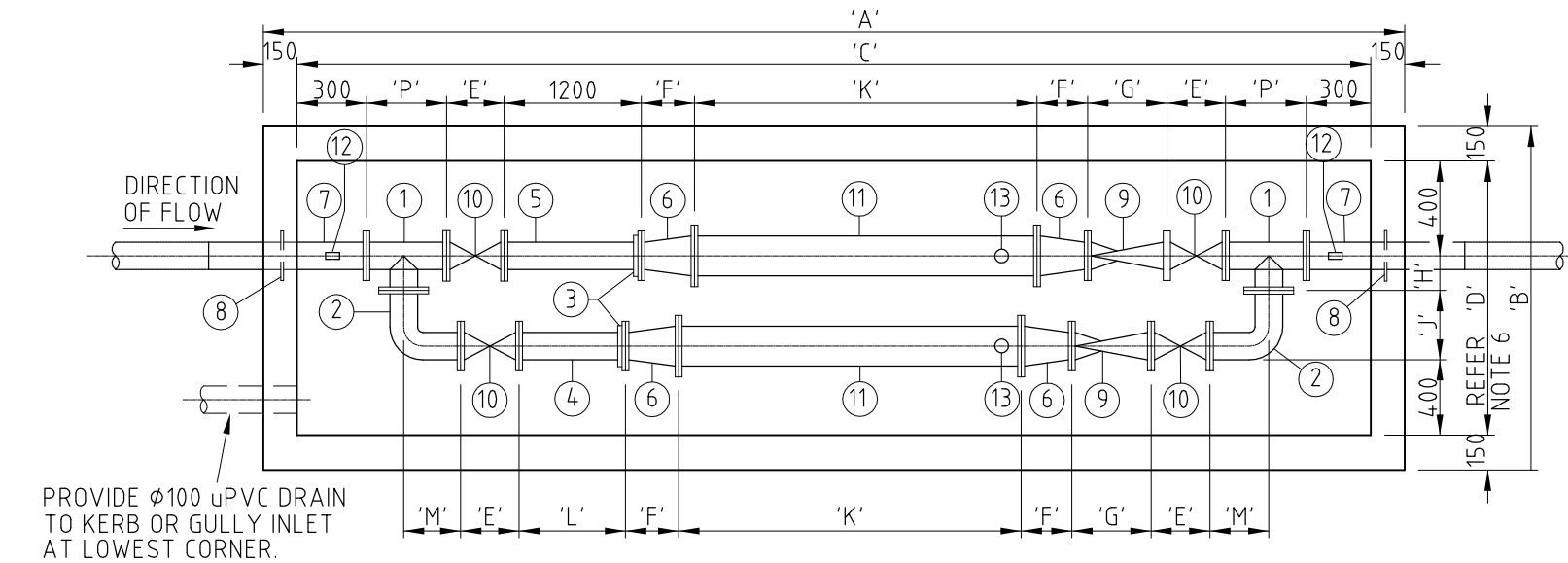
PUMP DESCRIPTION

PUMP STATION
PUMP TYPE & MODEL
MOTOR RATING
ENCLOSURE TUBE DIAMETER
ENCLOSURE TUBE LENGH
DUTY POINT.....l/s. ATm HEAD
WATER SUPPLY PUMP STATION NO.
ADDRESS :
FILE No. :

LOCALITY PLAN



SECTIONAL ELEVATION



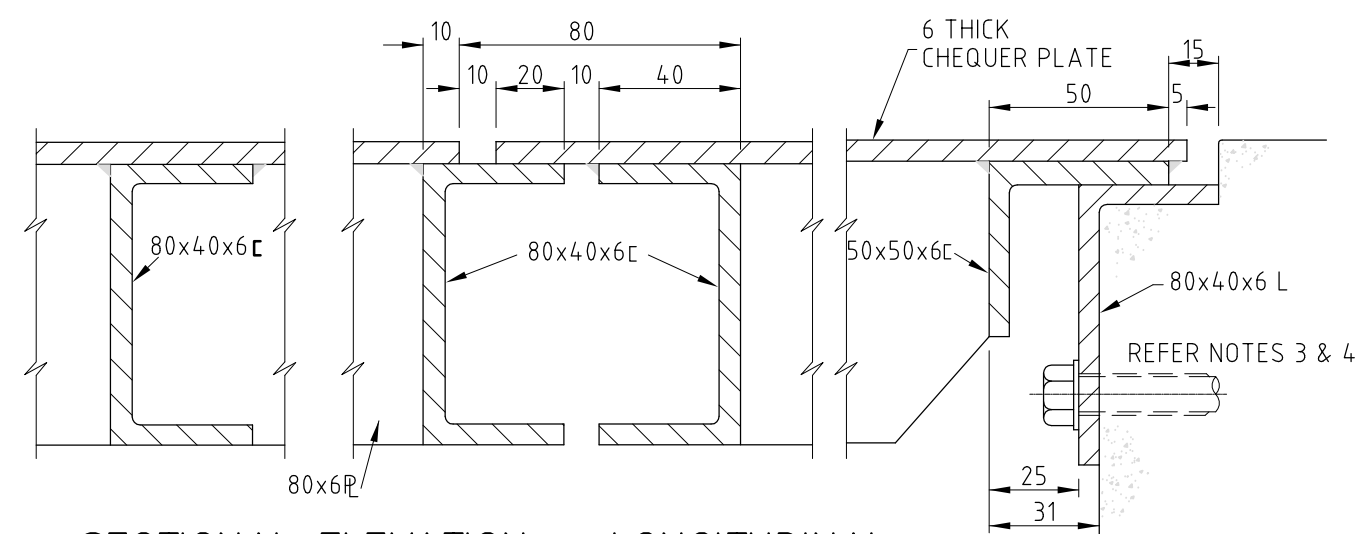
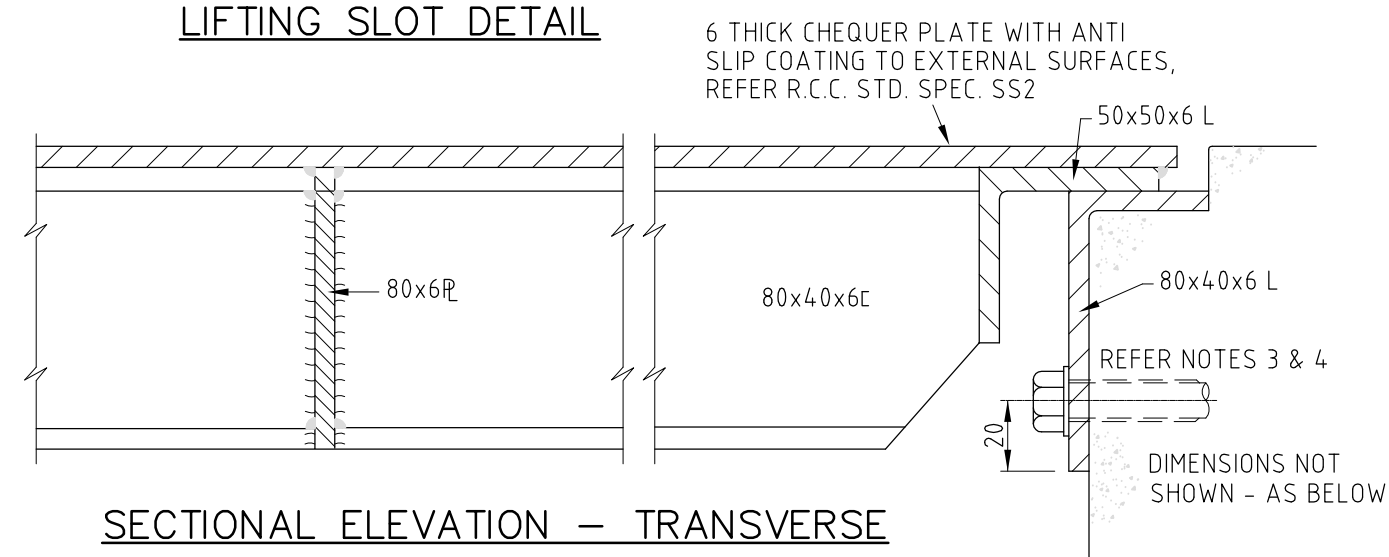
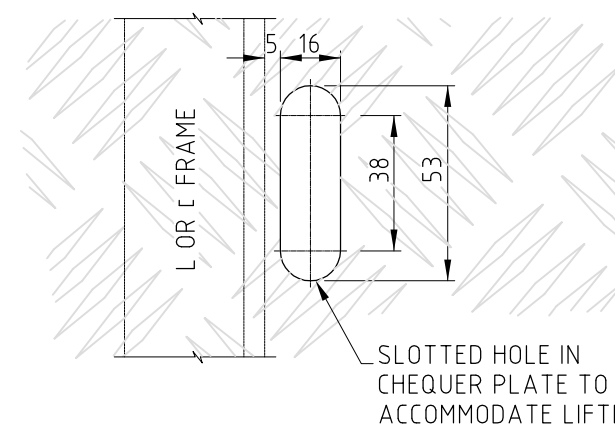
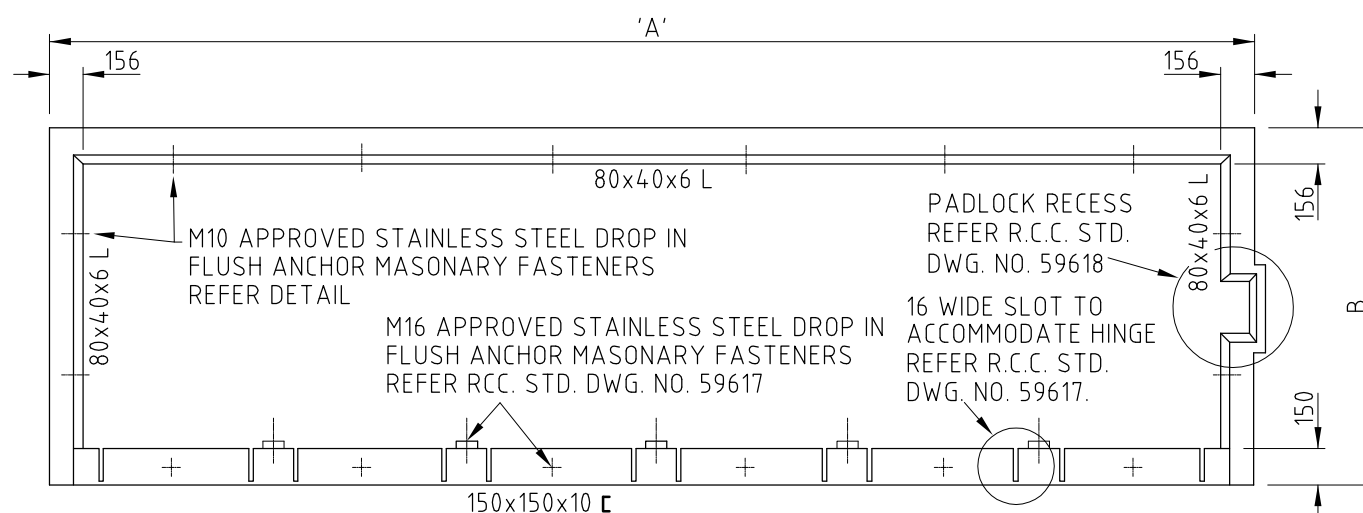
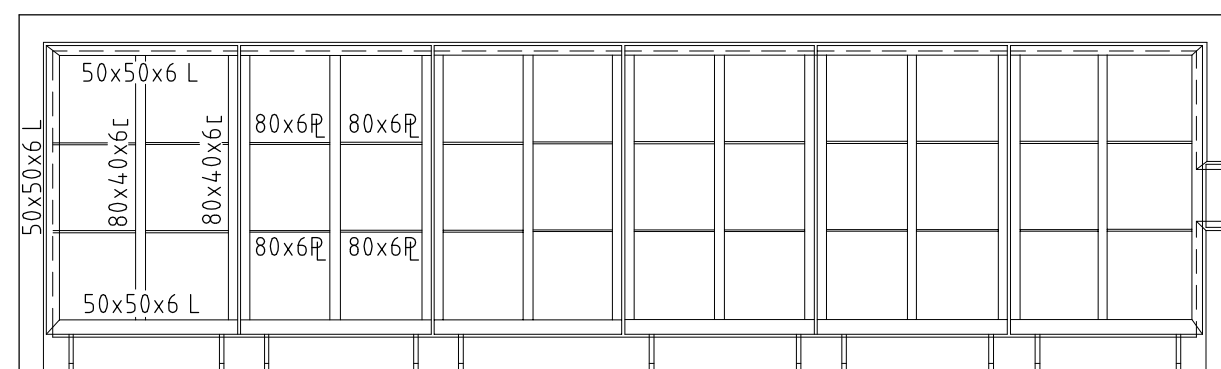
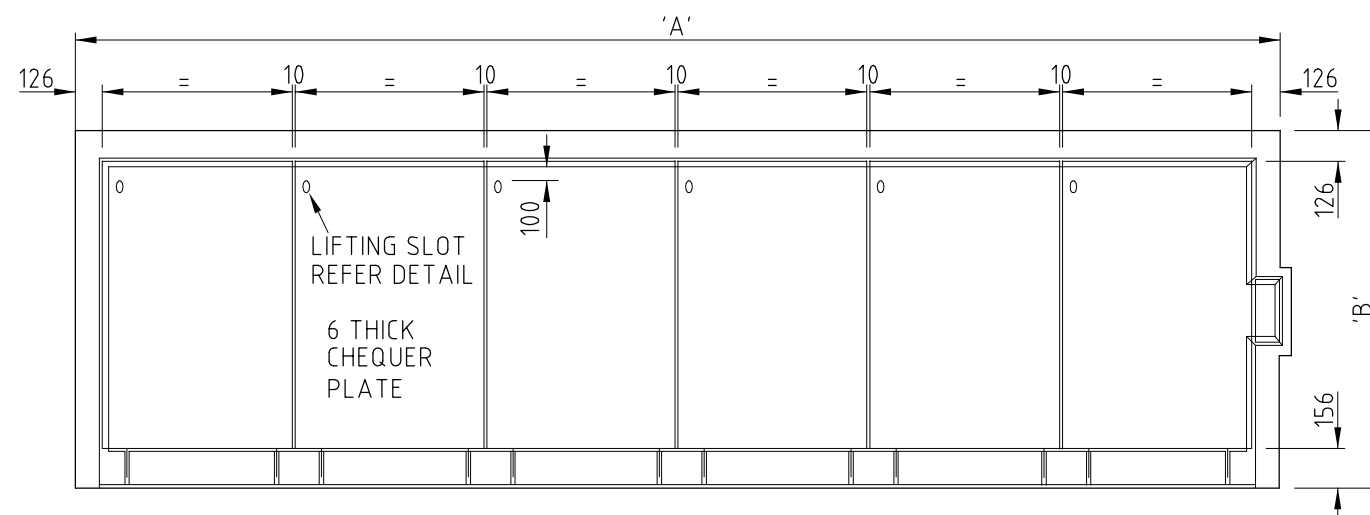
PLAN

NOTES:

MARK	DIMENSION
'A'	
'B'	
'C'	
'D'	
'E'	
'F'	
'G'	
'H'	
'J'	
'K'	
'L'	
'M'	
'N'	
'P'	

- THE CONSULTANT SHALL COMPLETE AND SUBMIT FOR APPROVAL TO THE COUNCIL ALL TABLES AND DIMENSIONS.
- ALL CAST INSITU CONCRETE TO BE GRADE N25.
- FOR LOCATION OF PUMP STATION CONTROL CUBICLE REFER R.C.C. STD. DWG. NO. 59617.
- FOR PUMP STATION COVER DETAILS REFER R.C.C. STD. DWG. NO'S 59616 TO 59618.
- ALL FLANGES TO BE DRILLED IN ACCORDANCE WITH R.C.C. STANDARD SPECIFICATION SS 2.
- MAXIMUM DIMENSION OF 1300 FOR 'D'.
- AIR VALVE TO BE AT HIGH POINT.
- FOR RESERVOIR DETAILS REFER R.C.C. STANDARD SPECIFICATION SS11.
- PROVIDE 25 ϕ BALL VALVE, PRESSURE GAUGE AND PRESSURE SWITCH.
- THIS DRAWING IS TO BE READ IN CONJUNCTION WITH R.C.C. STANDARD SPECIFICATION SS12 AND SS14.
- DIMENSIONS ARE IN MILLIMETRES UNLESS SHOWN OTHERWISE.

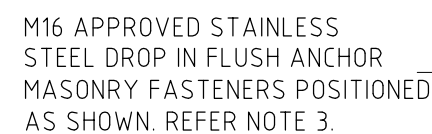
REDCLIFFE CITY COUNCIL Copyright in the whole and every part of this drawing belongs to Redcliffe City Council and may not be used, sold, transferred, copied or reproduced in whole or in part in any manner or form on any media, to any person other than by agreement with Redcliffe City Council.				SURVEY: A3 DATUM: A.H.D. DESIGNED: CHECKED: RECOMMENDED: APPROVED:		REDCLIFFE CITY COUNCIL IRENE STREET REDCLIFFE PO BOX 66, REDCLIFFE QLD 4020 PHONE: (07) 3283 0233 FAX: (07) 3883 1723 WEB SITE: www.redcliffe.qld.gov.au		RCC STANDARD DRAWINGS - WATER TYPICAL 100 PRESSURE REDUCING VALVE ARRANGEMENT		DATE: 26.07.06 DRAWING No: W-0015	Rv. A	
A	DATE	ORIGINAL ISSUE	REVISIONS	REC.	APPR.							



- NOTES:

1. ALL COMPONENTS SHALL BE ALUMINIUM ALLOY 6061-T1 UNLESS SHOWN OTHERWISE
2. ALL CONNECTIONS SHALL BE WELDED WITH 6mm CONTINUOUS FILLET OR FULL STRENGTH BUTT WELDS UNLESS SHOWN OTHERWISE
3. ISOLATE FASTENERS FROM FRAME AND CONCRETE STRUCTURE WITH A BITUMINOUS PAINT TO BOLT SHANK AND TO FRAME.
4. M10 STAINLESS STEEL DROP IN FLUSH ANCHOR MASONRY FASTENERS TO BE POSITIONED AS DETAILED
5. DIMENSIONS ARE IN MILLIMETRES UNLESS SHOWN OTHERWISE.

[illegible]



Ø16 S.S. HINGE BOLT
COMPLETE WITH S.S. WASHERS
AGAINST BOLT HEAD, NUT
AND BETWEEN FIXINGS. NUT
TO BE WELD FIXED TO BOLT

FABRICATE BOTH FIXINGS
FROM 65x10 FLAT 

SLOT TO TOP
OF CHANNEL -

FABRICATE BOTH FIXINGS
FROM 65x10 FL AT _____

SLOT TO TOP
OF CHANNEL-

ELEVATION

PLAN

RECESSED HINGE DETAIL



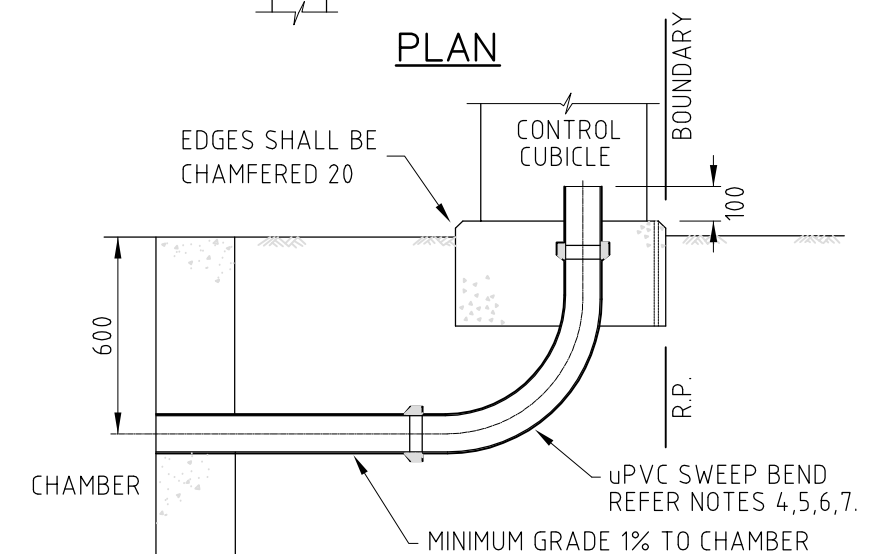
TYPICAL ARRANGEMENT PLAN

1. LOCATION OF PUMP STATION AND CONTROL CUBICLE SHALL BE AS SHOWN ON THE APPROVED ENGINEERING DRAWINGS.
2. PROVIDE ELECTRICAL CONDUIT TO PUMP STATION CUBICLE IN ACCORDANCE WITH ENERGEX REQUIREMENTS.
3. ALL ALLOY FACES IN CONTACT WITH CONCRETE SURFACES SHALL BE PAINTED WITH BITUMINOUS PAINT.
4. CONDUITS TO BE MINIMUM 63 NOMINAL DIAMETER FOR EACH PUMP AND MINIMUM 50 NOMINAL DIAMETER FOR CONTROL CABLES OR TWICE THE OUTSIDE DIAMETER OF THE INSTALLED CABLE WHICHEVER IS THE GREATER.
5. PUMP CONDUITS AND CONTROL CONDUIT SHALL BE SEPERATED BY A MINIMUM 300. PUMP CONDUITS SHALL BE SEPERATED BY 30.

6. CONDUITS SHALL BE INSTALLED IN ACCORDANCE WITH AS/NZS 3000.
7. CONDUITS SHALL BE IN ACCORDANCE WITH AS.2053.
8. DIMENSIONS ARE IN MILLIMETRES UNLESS SHOWN OTHERWISE.



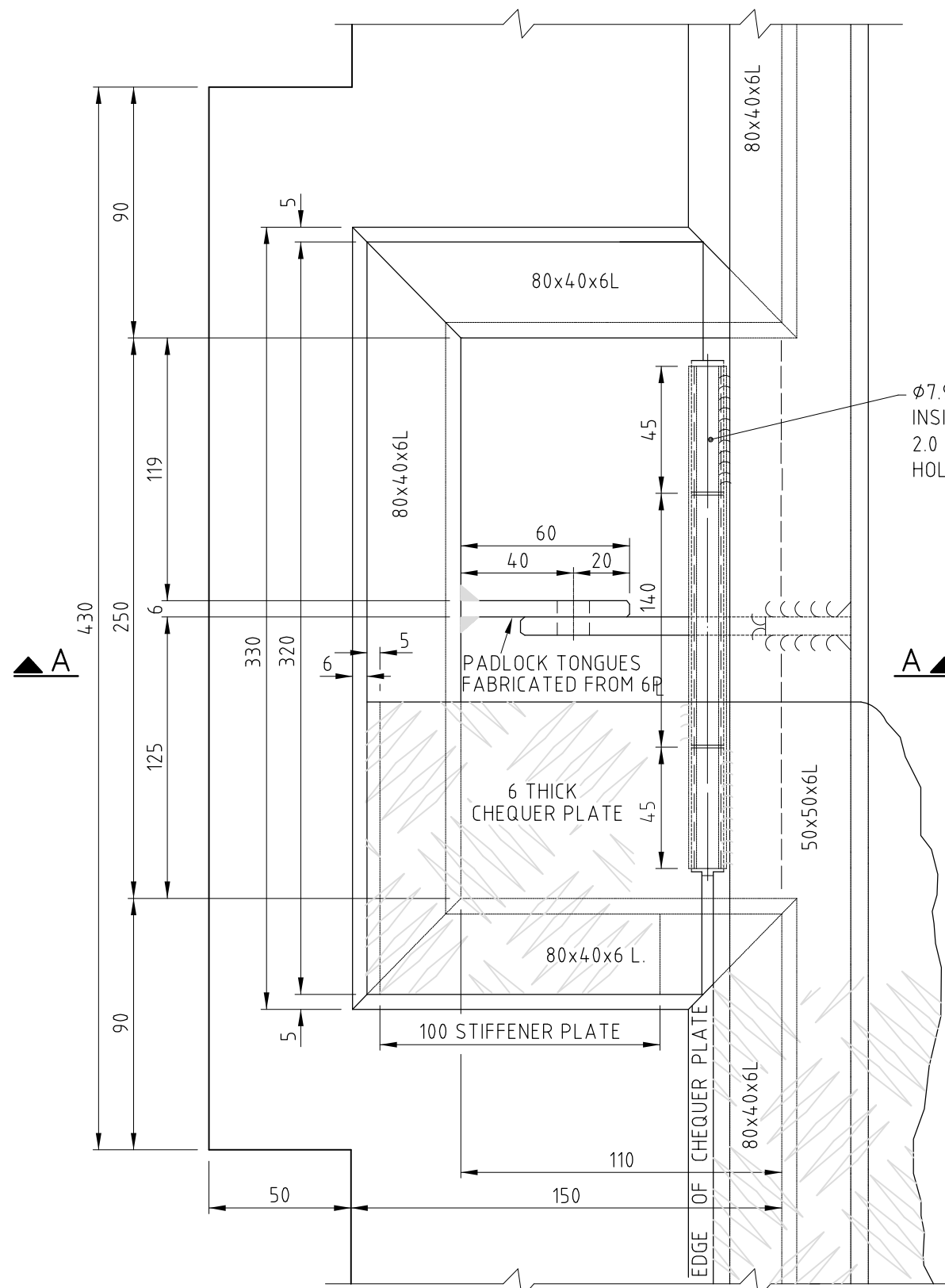
PLAN



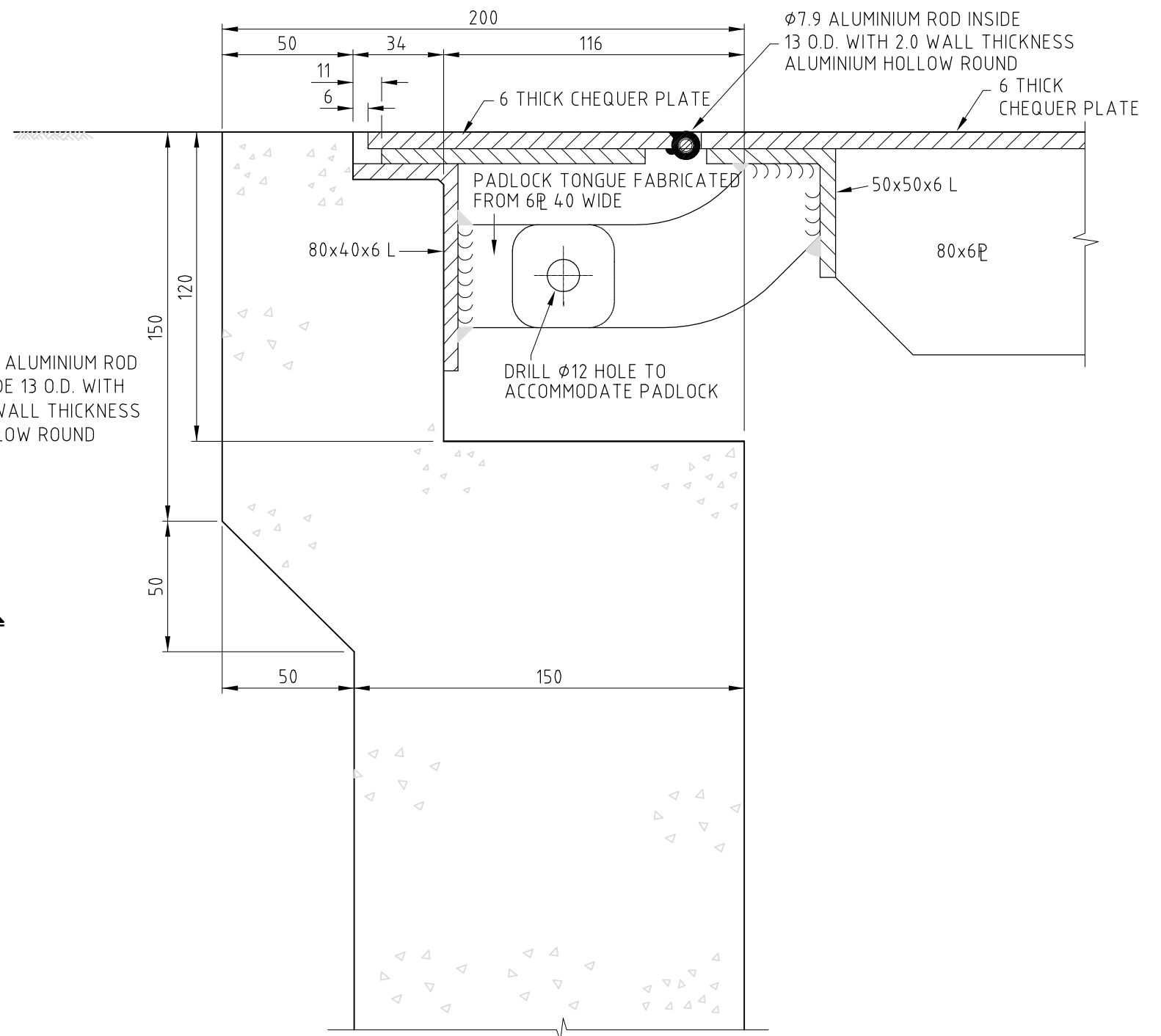
SECTION A-A

CONTROL CUBICLE DETAILS

[illegible]



PLAN



SECTION A-A

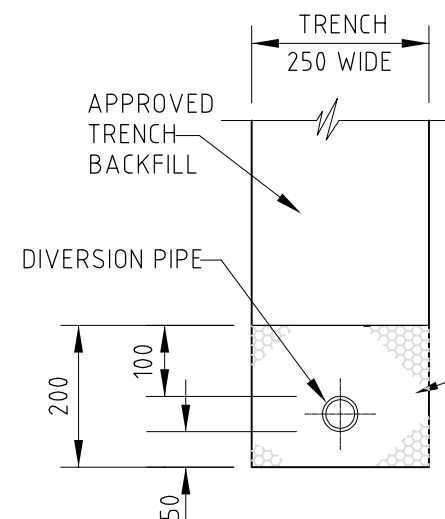
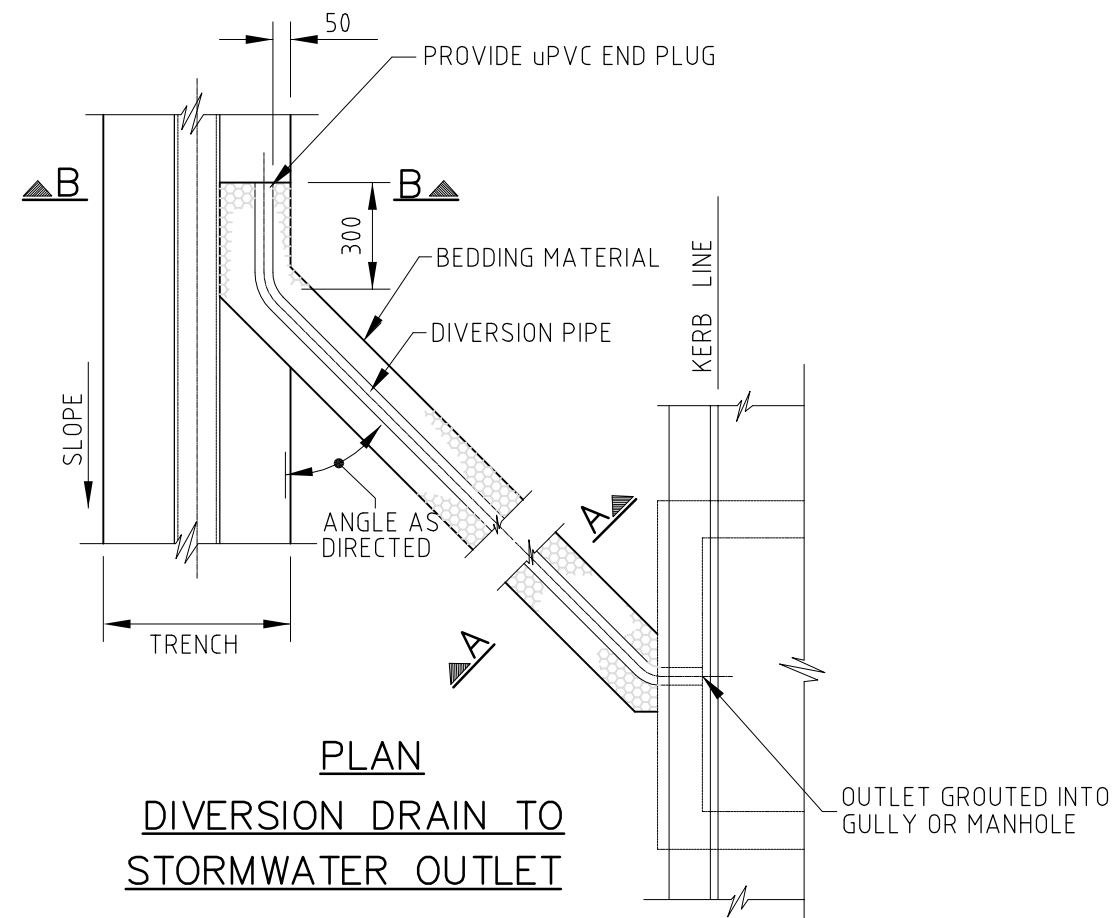
PADLOCK RECESS DETAIL

NOTES:

1. ALL ALLOY FACES IN CONTACT WITH CONCRETE SURFACES SHALL BE PAINTED WITH BITUMINOUS PAINT.
2. DIMENSIONS ARE IN MILLIMETRES UNLESS SHOWN OTHERWISE.

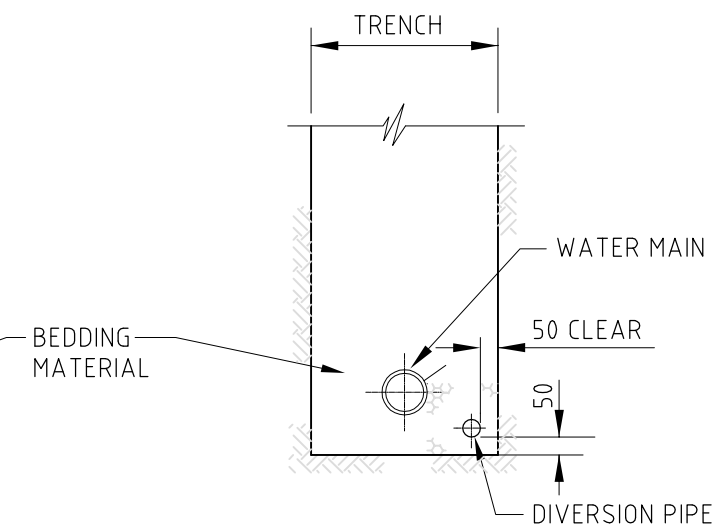
--	--	--	--	--	--	--	--	--	--	--	--	--	--	--	--	--	--	--	--	--	--	--	--	--	--	--	--	--	--	--	--	--	--	--	--	--	--	--	--	--	--	--	--	--	--	--	--	--	--	--	--	--	--	--	--	--	--	--	--	--	--	--	--	--	--	--	--	--	--	--	--	--	--	--	--	--	--	--	--	--	--	--	--	--	--	--	--	--	--	--	--	--	--	--	--	--	--	--	--	--	--	--	--	--	--	--	--	--	--	--	--	--	--	--	--	--	--	--	--	--	--	--	--	--	--	--	--	--	--	--	--	--	--	--	--	--	--	--	--	--	--	--	--	--	--	--	--	--	--	--	--	--	--	--	--	--	--	--	--	--	--	--	--	--	--	--	--	--	--	--	--	--	--	--	--	--	--	--	--	--	--	--	--	--	--	--	--	--	--	--	--	--	--	--	--	--	--	--	--	--	--	--	--	--	--	--	--	--	--	--	--	--	--	--	--	--	--	--	--	--	--	--	--	--	--	--	--	--	--	--	--	--	--	--	--	--	--	--	--	--	--	--	--	--	--	--	--	--	--	--	--	--	--	--	--	--	--	--	--	--	--	--	--	--	--	--	--	--	--	--	--	--	--	--	--	--	--	--	--	--	--	--	--	--	--	--	--	--	--	--	--	--	--	--	--	--	--	--	--	--	--	--	--	--	--	--	--	--	--	--	--	--	--	--	--	--	--	--	--	--	--	--	--	--	--	--	--	--	--	--	--	--	--	--	--	--	--	--	--	--	--	--	--	--	--	--	--	--	--	--	--	--	--	--	--	--	--	--	--	--	--	--	--	--	--	--	--	--	--	--	--	--	--	--	--	--	--	--	--	--	--	--	--	--	--	--	--	--	--	--	--	--	--	--	--	--	--	--	--	--	--	--	--	--	--	--	--	--	--	--	--	--	--	--	--	--	--	--	--	--	--	--	--	--	--	--	--	--	--	--	--	--	--	--	--	--	--	--	--	--	--	--	--	--	--	--	--	--	--	--	--	--	--	--	--	--	--	--	--	--	--	--	--	--	--	--	--	--	--	--	--	--	--	--	--	--	--	--	--	--	--	--	--	--	--	--	--	--	--	--	--	--	--	--	--	--	--	--	--	--	--	--	--	--	--	--	--	--	--	--	--	--	--	--	--	--	--	--	--	--	--	--	--	--	--	--	--	--	--	--	--	--	--	--	--	--	--	--	--	--	--	--	--	--	--	--	--	--	--	--	--	--	--	--	--	--	--	--	--	--	--	--	--	--	--	--	--	--	--	--	--	--	--	--	--	--	--	--	--	--	--	--	--	--	--	--	--	--	--	--	--	--	--	--	--	--	--	--	--	--	--	--	--	--	--	--	--	--	--	--	--	--	--	--	--	--	--	--	--	--	--	--	--	--	--	--	--	--	--	--	--	--	--	--	--	--	--	--	--	--	--	--	--	--	--	--	--	--	--	--	--	--	--	--	--	--	--	--	--	--	--	--	--	--	--	--	--	--	--	--	--	--	--	--	--	--	--	--	--	--	--	--	--	--	--	--	--	--	--	--	--	--	--	--	--	--	--	--	--	--	--	--	--	--	--	--	--	--	--	--	--	--	--	--	--	--	--	--	--	--	--	--	--	--	--	--	--	--	--	--	--	--	--	--	--	--	--	--	--	--	--	--	--	--	--	--	--	--	--	--	--	--	--	--	--	--	--	--	--	--	--	--	--	--	--	--	--	--	--	--	--	--	--	--	--	--	--	--	--	--	--	--	--	--	--	--	--	--	--	--	--	--	--	--	--	--	--	--	--	--	--	--	--	--	--	--	--	--	--	--	--	--	--	--	--	--	--	--	--	--	--	--	--	--	--	--	--	--	--	--	--	--	--	--	--	--	--	--	--	--	--	--	--	--	--	--	--	--	--	--	--	--	--	--	--	--	--	--	--	--	--	--	--	--	--	--	--	--	--	--	--	--	--	--	--	--	--	--	--	--	--	--	--	--	--	--	--	--	--	--	--	--	--	--	--	--	--	--	--	--	--	--	--	--	--	--	--	--	--	--	--	--	--	--	--	--	--	--	--	--	--	--	--	--	--	--	--	--	--	--	--	--	--	--	--	--	--	--	--	--	--	--	--	--	--	--	--	--	--	--	--	--	--	--	--	--	--	--	--	--	--	--	--	--	--	--	--	--	--	--	--	--	--	--	--	--	--	--	--	--	--	--	--	--	--	--	--	--	--	--	--	--	--	--	--	--	--	--	--	--	--	--	--	--	--	--	--	--	--	--	--	--	--	--	--	--	--	--	--	--	--	--	--	--	--	--	--	--	--	--	--	--	--	--	--	--	--	--	--	--	--	--	--	--	--	--	--	--	--	--	--	--	--	--	--	--	--	--	--	--	--	--	--	--	--	--	--	--	--	--	--	--	--	--	--	--	--	--	--	--	--	--	--	--	--	--	--	--	--	--	--	--	--	--	--	--	--	--	--	--	--	--	--	--	--	--	--	--	--	--	--	--	--	--	--	--	--	--	--	--	--	--	--	--	--	--	--	--	--	--	--	--	--	--	--	--	--	--	--	--	--	--	--	--	--	--	--	--	--	--	--	--	--	--	--	--	--	--	--	--	--	--	--	--	--	--	--	--	--

[illegible]



SECTION A-A

DIVERSION DRAIN TRENCH



SECTION B-B

NOTES

1. DIVERSION PIPES AND FITTINGS TO BE $\phi 50$ SLOTTED POLYTHYLENE CLASS 400 TO A.S.2439.
2. FOR BEDDING MATERIAL REQUIREMENTS (GRADE 5/7) REFER COUNCIL'S STANDARD SPECIFICATION SS2.
3. DIVERSION DRAINS ARE TO BE FITTED WITH A FILTER SLEEVE/SOCK AS DIRECTED BY THE SUPERINTENDENT.
4. LOCATE THE DIVERSION PIPE CENTRALLY IN TRENCH 50 ABOVE TRENCH FLOOR. PROVIDE END CAPS AT ALL PIPE ENDS.
5. DIMENSIONS ARE IN MILLIMETRES UNLESS SHOWN OTHERWISE.

<p>REDCLIFFE CITY COUNCIL</p> <p>Copyright in the whole and every part of this drawing belongs to Redcliffe City Council and may not be used, sold, transferred, copied or reproduced in whole or in part in any manner or form or on any media, to any person other than by agreement with Redcliffe City Council.</p> <p>This document is produced by Redcliffe City Council solely for the benefit of and use by RCC in accordance with the terms of the retailer. Redcliffe City Council does not and shall not assume any responsibility or liability whatsoever to any third party arising out of any use or reliance by third party on the content of this document.</p>				<p>A3 DATUM: A.H.D.</p>		<p>REDCLIFFE</p> <p>IRENE STREET REDCLIFFE PO BOX 66, REDCLIFFE QLD 4020 PHONE: (07) 3283 0233 FAX: (07) 3883 1723 WEB SITE: www.redcliffe.qld.gov.au</p>		<p>RCC STANDARD DRAWINGS - WATER</p>		<p>DATE: 26.07.06</p>		<p>Rv.</p>	
<p>DESIGNED:</p>				<p>CHECKED:</p>		<p>STANDARD FOR DRAINAGE OF WATER MAINS TRENCHES AND DIVERSION DRAINS</p>		<p>DRAWING No:</p>		<p>W-0020</p>		<p>A</p>	
<p>RECOMMENDED:</p>				<p>APPROVED:</p>		<p>DATE</p>		<p>REVISIONS</p>		<p>REC. APPR.</p>		<p>ORIGINAL ISSUE</p>	
<p>A</p>				<p>Rv</p>		<p>DATE</p>		<p>REVISIONS</p>		<p>REC. APPR.</p>		<p>ORIGINAL ISSUE</p>	