

U/G ELECTRICITY

Road edge guide post.  
Paint "U/G ELECTRICITY" in black on yellow background,  
in series D capitals (AS 1744), 50 high on both sides of post.  
Painting as specified for road edge guide posts

## DETAIL OF SIGN

Provide where specified

## NOTES

### (A) ALTERNATIVE CHAMBERS/PITS

TYPE 1: 750 x 750 clear opening C.I. cover and frame including warning plate reading "ELEC".  
Cover to be concrete filled on site. ("Gatic" light duty or "Faston SPC / MS8" or similar approved type).  
Cover shall be installed in accordance with the manufacturer's instructions. The cover and frame shall be strapped together and wedged tight before concreting in place with fine aggregate concrete.  
Cover Class C to AS 3996.  
Concrete N32 in accordance with AS 1379 and AS 3600.  
Pit has been designed for a wheel load of 5kN.

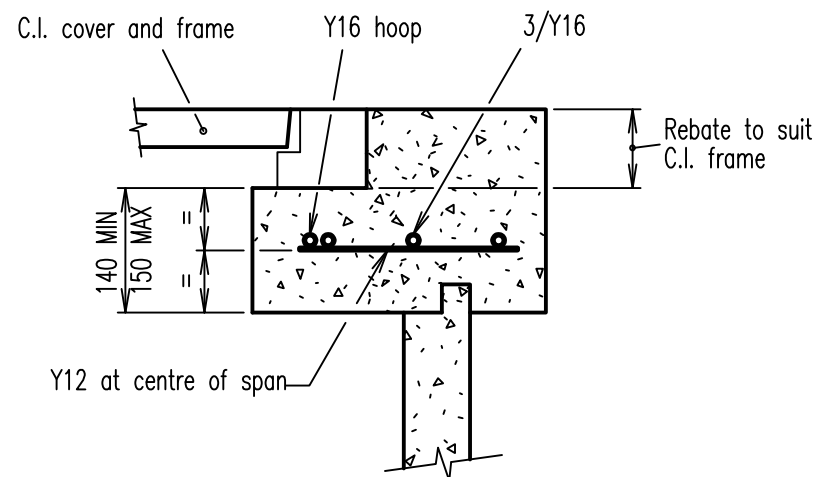
TYPE 2: 'EVERHARD', DIA. 1050 or 1200 Precast concrete inspection chambers with C.I. cover and frame.

TYPE 3: 'VIPIT' moulded HDPE cable jointing pits with precast concrete covers.

TYPE 4: 'POLYPIT' (polymer concrete), cable jointing and drawing pit.

### (B) GENERAL

- Covers in trafficable areas Class D, non trafficable areas Class C, to AS 3996.
- Place U/G ELECTRICITY sign adjacent to the pit where directed by the Superintendent.
- Grade conduits through pits – provide drainage pipe, complete with approved flap valve from lowest pit, refer Project Drawings.
- Cover to be placed parallel to adjacent structures.
- Where multiple layers of conduits are required the cast-in situ concrete base shall encompass all conduits.
- Notwithstanding the above requirements, space conduits as shown on the Project Drawings or as specified in the Job Specification.
- Refer project drawings for specific pit requirements.
- All dimensions in millimetres.

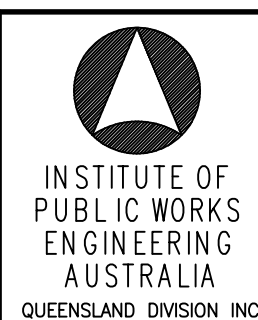


## DETAIL A

## TYPE 1 CABLE DRAWING PIT

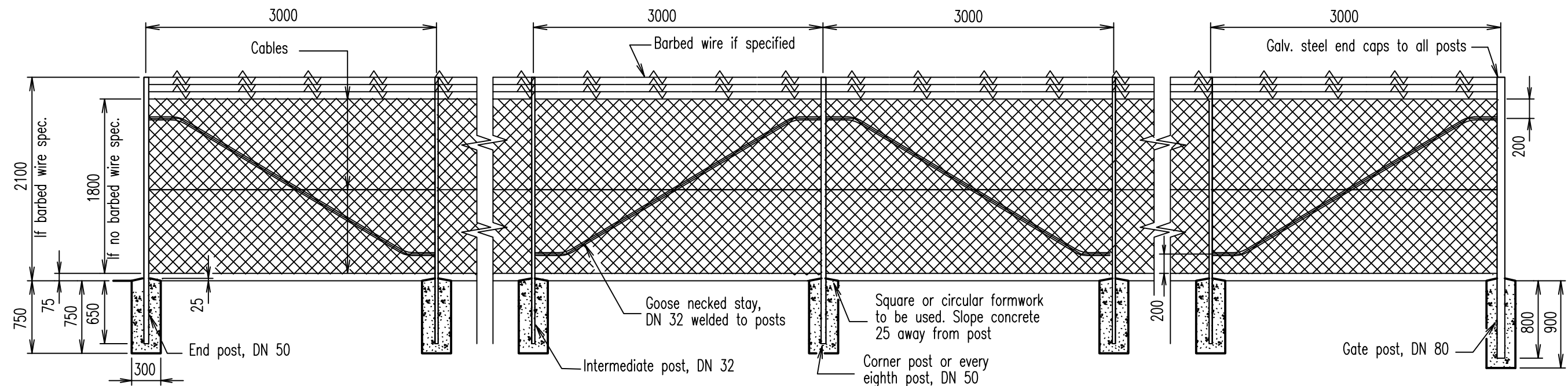
B	Flared ends omitted and concrete to N32	16/1/97
A	ORIGINAL ISSUE	8/12/95
REVISIONS		DATE

© INSTITUTE OF PUBLIC WORKS ENGINEERING AUSTRALIA QUEENSLAND DIVISION INC. -1995  
DISCLAIMER. The authors and sponsoring organisations shall have no liability or responsibility to the user or any other person or entity with respect to any liability, loss or damage caused or alleged to be caused, directly or indirectly, by the adoption and use of these Standard Drawings including, but not limited to, any interruption of service, loss of business or anticipatory profits, or consequential damages resulting from the use of these Standard Drawings. Persons must not rely on these Standard Drawings as the equivalent of, or a substitute for, project-specific design and assessment by an appropriately qualified professional.



## ELECTRICAL CABLE DRAWING PITS

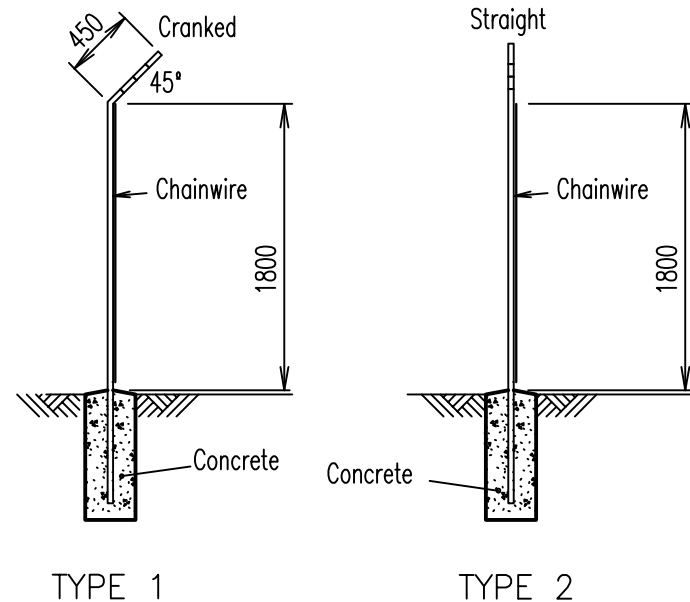
GENERAL  
Standard  
Drawing  
G-0030



## TYPICAL SECTION

### NOTES:

- POSTS: Gate posts to be DN 80 (light) galvanized steel tube, to AS 1074.  
Corner, end and every eighth post to be DN 50 (light) galvanized steel tube to AS 1074.  
Intermediate posts and goose necked stays to be DN 32 (light) galvanized steel tube to AS 1074.  
Galvanized steel end caps to be provided to all posts.  
All posts to be vertical.
- Corner posts to be adopted where the change in angle in horizontal alignment exceeds 20 degrees.
- Stays to be provided at end posts, gate posts, corner posts and every eighth post.
- Standard couplings (down-ee fittings) may be used as an alternative to welds. For all connections except goose necked stays which shall be welded to posts.
- All welds to be 5 thick continuous fillet welds to AS 1554. with cold galvanizing treatment to completed welds.
- Cables to be formed from two 3.15mm diameter wires twisted together and installed in accordance with AS 1725.
- All posts, stays and cables are to be galvanized in accordance with AS 1650.
- All concrete N25 in accordance with AS 1379 and AS 3600.
- Chain wire to be fixed using 1.6 wire ties as follows :  
Intermediate posts at 3 locations  
End posts at 3 locations  
Horizontal cable at 375 centres to top cable  
Horizontal cable at 600 centres to middle cable  
Horizontal cable at 450 centres to bottom cable.
- Barbed wire to AS 2423.
- All dimensions in millimetres.



TYPE 1

TYPE 2

© INSTITUTE OF PUBLIC WORKS ENGINEERING AUSTRALIA QUEENSLAND DIVISION INC. -1995  
DISCLAIMER. The authors and sponsoring organisations shall have no liability or responsibility to the user or any other person or entity with respect to any liability, loss or damage caused or alleged to be caused, directly or indirectly, by the adoption and use of these Standard Drawings including, but not limited to, any interruption of service, loss of business or anticipatory profits, or consequential damages resulting from the use of these Standard Drawings. Persons must not rely on these Standard Drawings as the equivalent of, or a substitute for, project-specific design and assessment by an appropriately qualified professional.

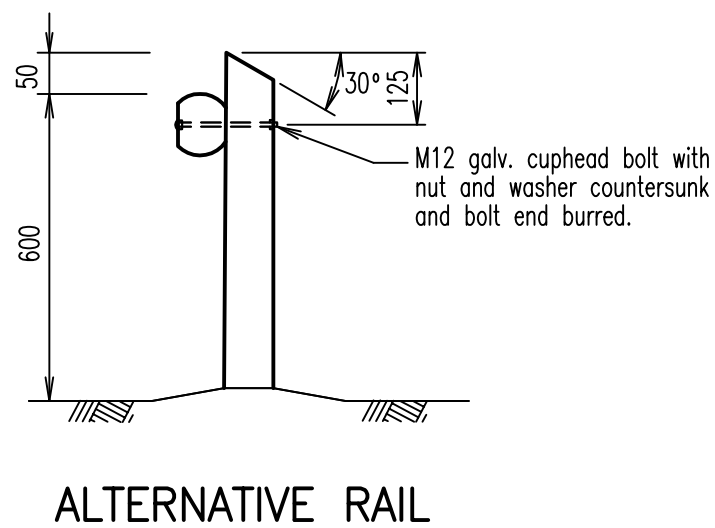
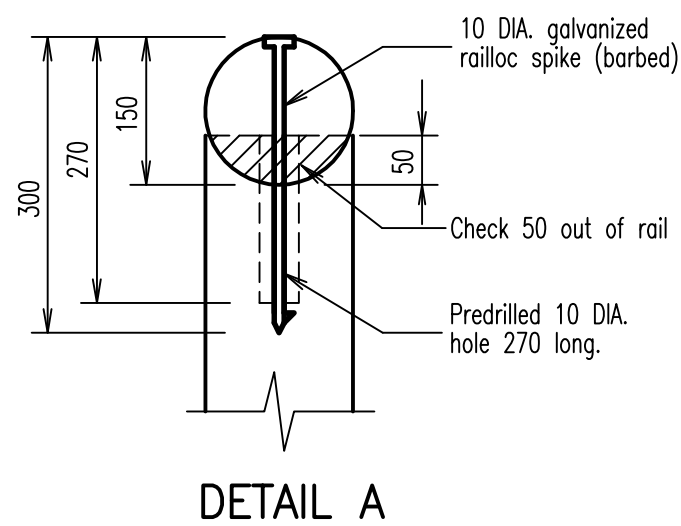
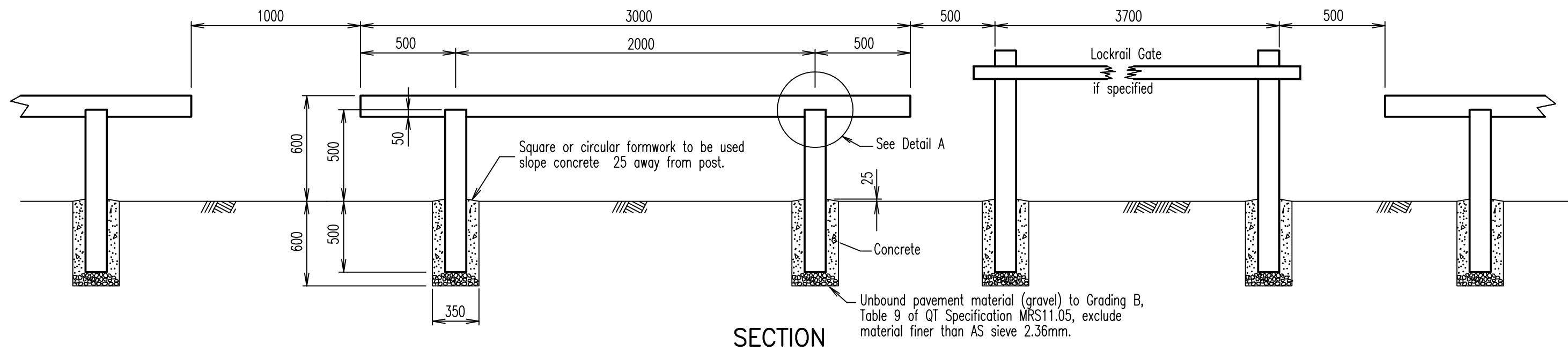


INSTITUTE OF  
PUBLIC WORKS  
ENGINEERING  
AUSTRALIA  
QUEENSLAND DIVISION INC.

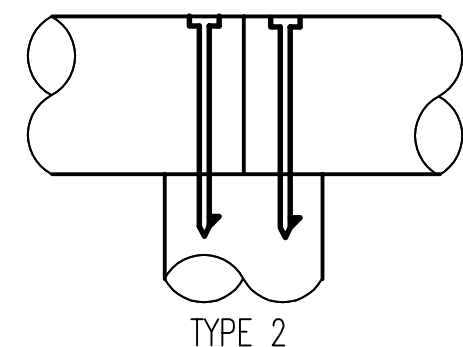
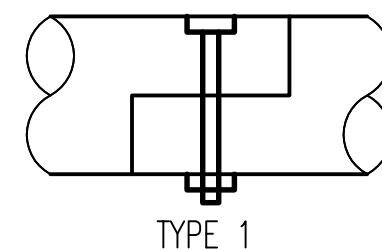
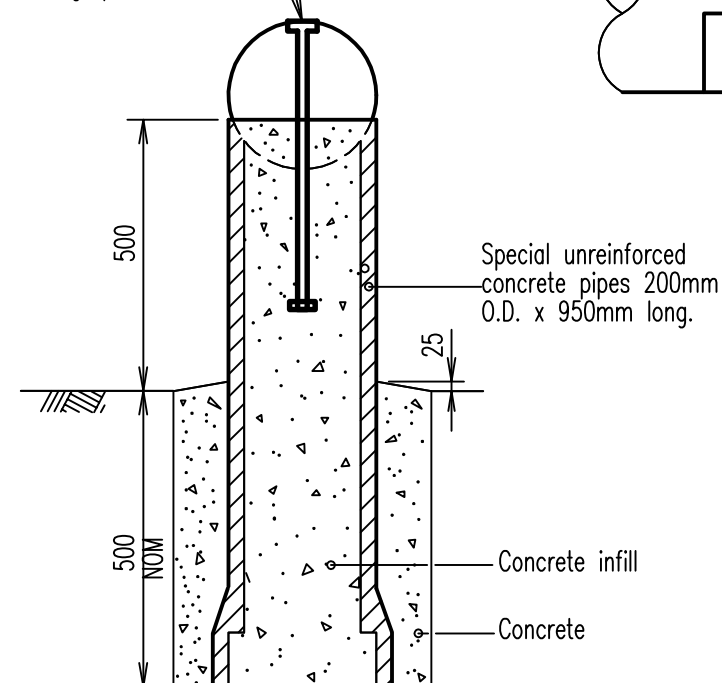
## FENCING CHAIN WIRE SECURITY FENCING

GENERAL  
Standard  
Drawing  
G-0041

A	ORIGINAL ISSUE	8/12/95
	REVISIONS	DATE



10mm galvanized bolt 300mm long projecting 95mm above pipe. Check nut into log, punch thread.



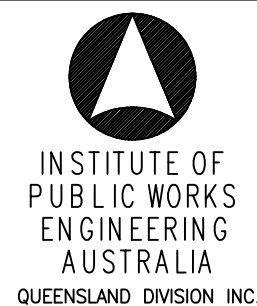
## TYPICAL RAIL JOINTS FOR CONTINUOUS FENCING

### NOTES

- Concrete N25 in accordance with AS 1379 and AS 3600.
- CCA log barriers to be 150 diameter, Grade A superlogs or equivalent treated to AS 1604.
- Paint all cut surfaces with CUPRINOL or equivalent.
- Hexagonal head bolts to AS 1111. Nuts to AS 1112. Washers to AS 1237. Galvanizing to 1214.
- All dimensions in millimetres.

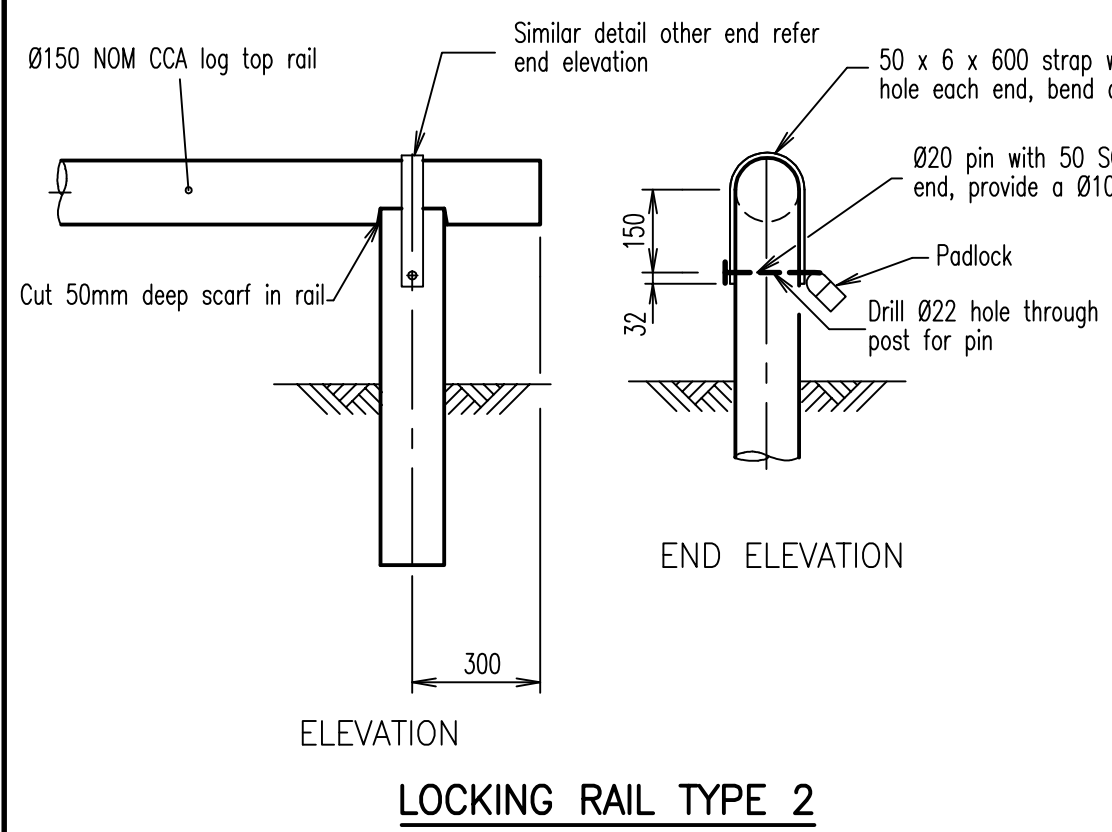
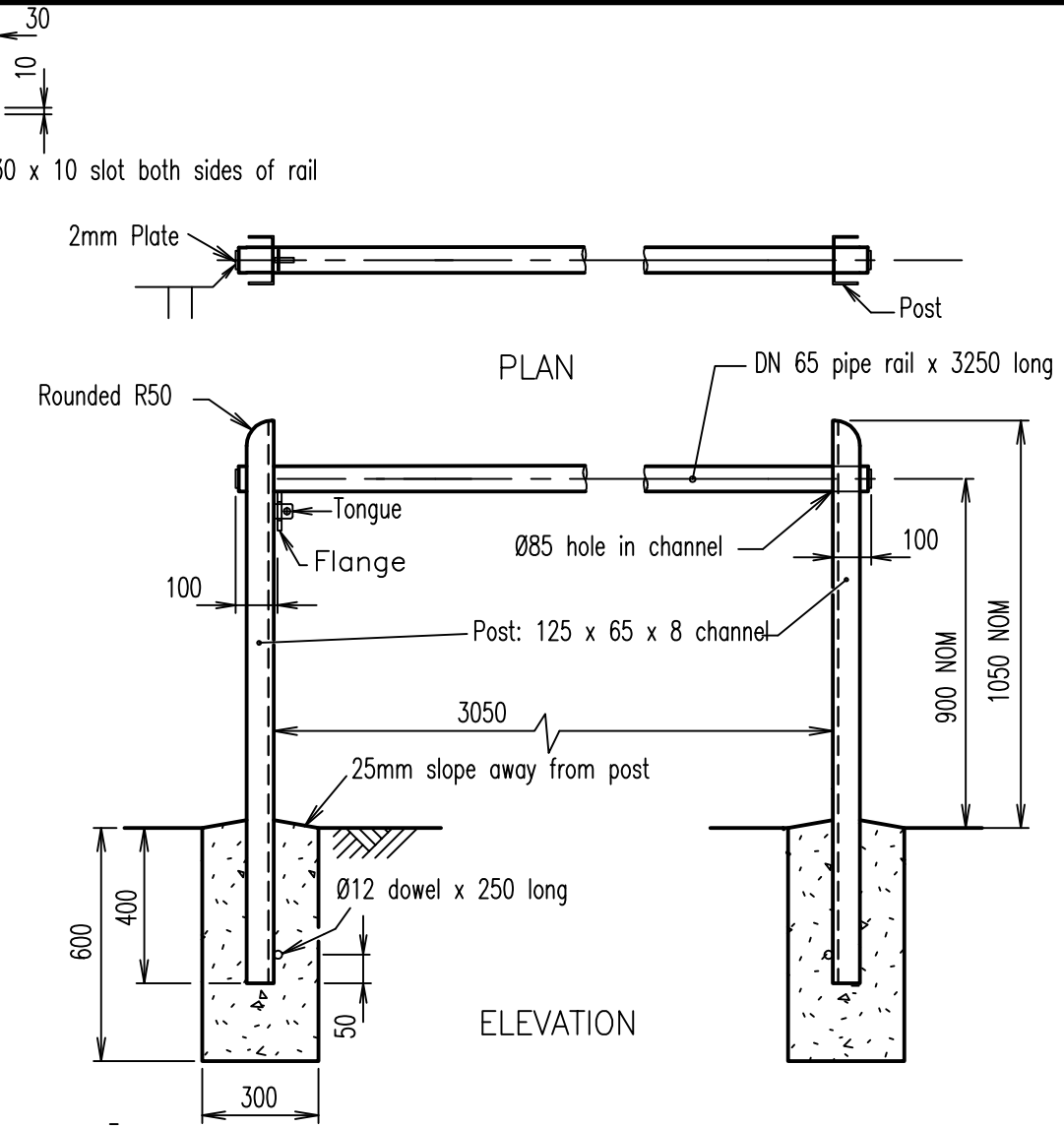
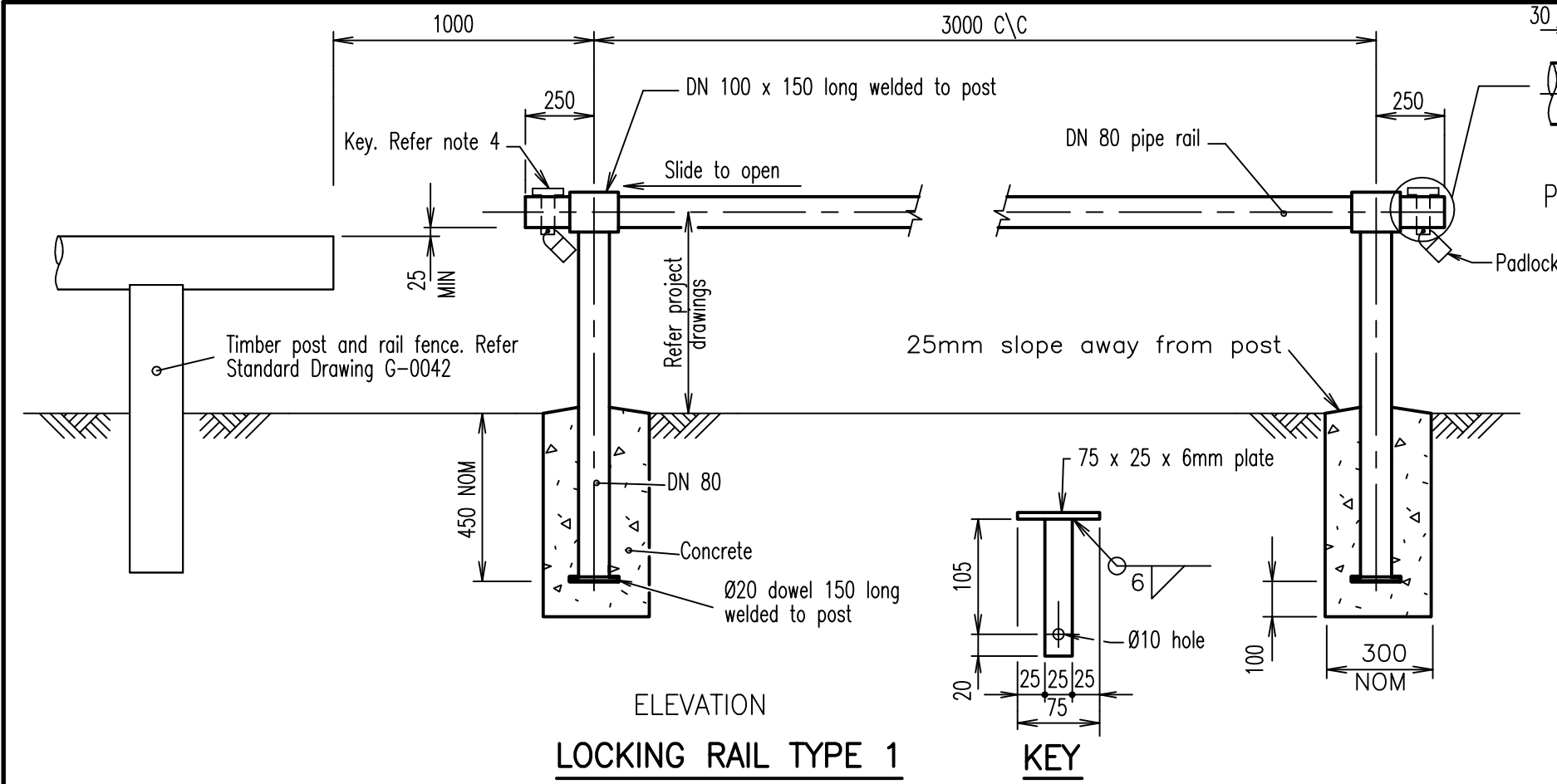
A	ORIGINAL ISSUE	8/12/95
	REVISIONS	DATE

© INSTITUTE OF PUBLIC WORKS ENGINEERING AUSTRALIA QUEENSLAND DIVISION INC. -1995  
 DISCLAIMER. The authors and sponsoring organisations shall have no liability or responsibility to the user or any other person or entity with respect to any liability, loss or damage caused or alleged to be caused, directly or indirectly, by the adoption and use of these Standard Drawings including, but not limited to, any interruption of service, loss of business or anticipatory profits, or consequential damages resulting from the use of these Standard Drawings. Persons must not rely on these Standard Drawings as the equivalent of, or a substitute for, project-specific design and assessment by an appropriately qualified professional.

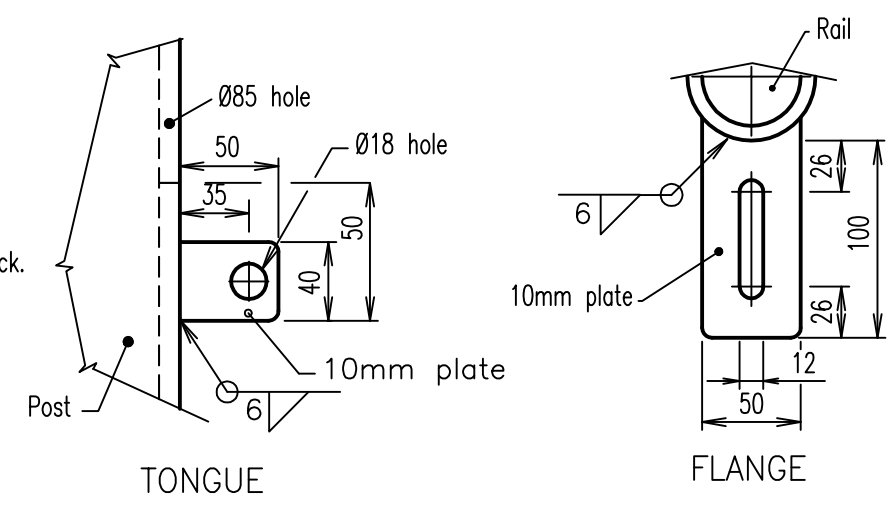


## FENCING LOG BARRIER FENCING

GENERAL  
Standard  
Drawing  
G-0042



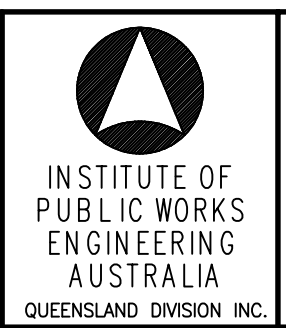
- NOTES:**
1. All pipes medium black tube to AS 1074.
  2. All welds to AS 1554.
  3. All welding symbols to AS 1101.3.
  4. Type 1 - 6mm plate key to fit through slotted hole in pipe and accept padlock. Padlock to be keyed to Superintendents requirements.
  5. Steel plates, Grade 250 to AS 3678.
  6. Dowel, Grade 250 to AS 3679.
  7. Channels, Grade 250 to AS 3679.
  8. All fabricated work, including plate key, shall have smooth ground edges.
  9. All steelwork to be hot dip galvanized after fabrication to AS 1650.
  10. Concrete N20 in accordance with AS 1379 and AS 3600.
  11. CCA log barriers to be 150 diameter, Grade A superlogs or equivalent, treated to AS 1604.
  12. Paint all cut CCA surfaces with CUPRINOL or equivalent.
  13. All dimensions in millimetres.



**LOCKING RAIL TYPE 3**

A	ORIGINAL ISSUE	8/12/95
	REVISIONS	DATE

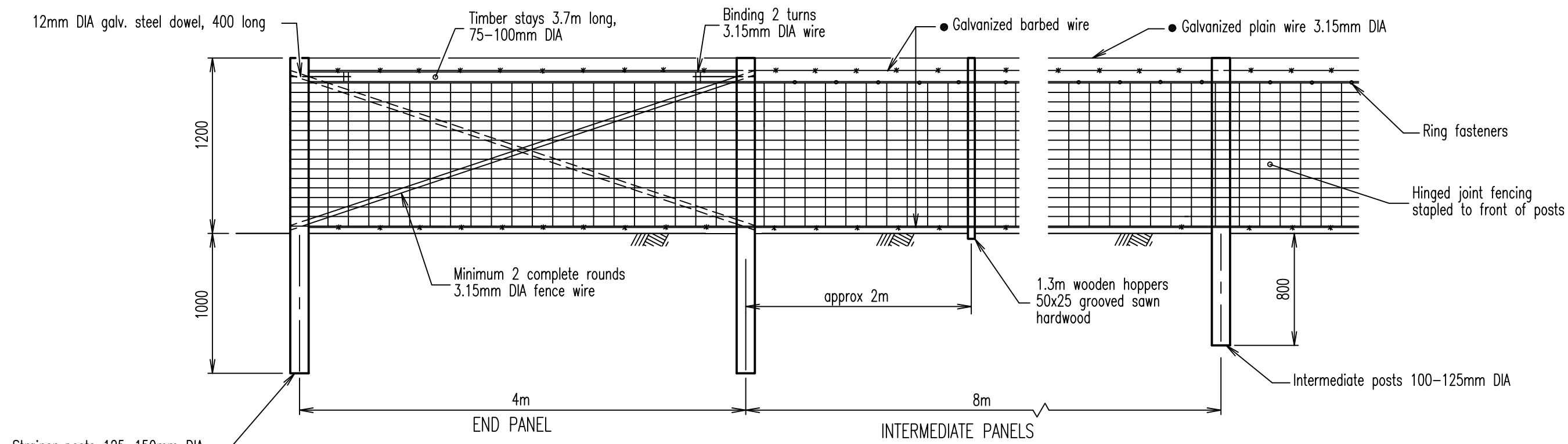
© INSTITUTE OF PUBLIC WORKS ENGINEERING AUSTRALIA QUEENSLAND DIVISION INC. -1995  
**DISCLAIMER.** The authors and sponsoring organisations shall have no liability or responsibility to the user or any other person or entity with respect to any liability, loss or damage caused or alleged to be caused, directly or indirectly, by the adoption and use of these Standard Drawings including, but not limited to, any interruption of service, loss of business or anticipatory profits, or consequential damages resulting from the use of these Standard Drawings. Persons must not rely on these Standard Drawings as the equivalent of, or a substitute for, project-specific design and assessment by an appropriately qualified professional.



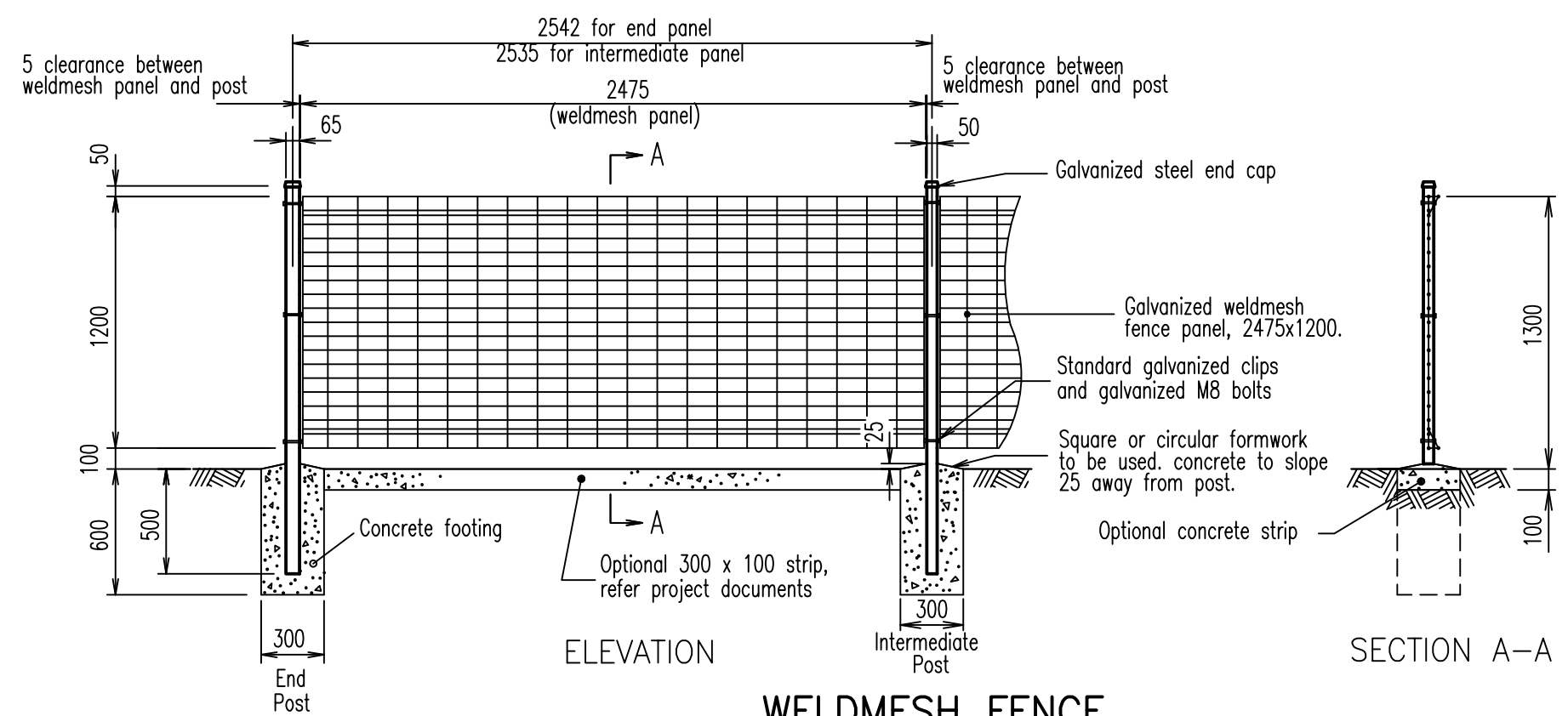
**FENCING – LOCKING RAIL**

**GENERAL  
Standard  
Drawing  
G-0043**

A



## CONTROL FENCE



## WELDMESH FENCE

### LEGEND

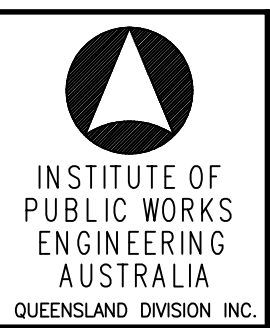
- Wire fixed to back of posts

### NOTES

- A - Weldmesh Fence
- Gate and end posts to be 65x65x2 galvanized steel section to AS 1163.
  - Intermediate posts to be 50x50x2 galvanized steel section to AS 1163.
  - Panels to be fixed to posts using standard galvanized clips and galvanized M8 bolts.
  - Galvanizing to AS 1214 and AS 1650.
  - Concrete N25 in accordance with AS 1379 and AS 3600.
  - Posts are to be vertical.
  - Raked panels are available for slopes up to 1 in 5.
  - Nuts to be spot welded to bolts as an anti-theft deterrent.
- B - Control Fence
- All barbed wire, plain wire, hinged joint fencing, staples and ring fasteners to be galvanized to AS 1650.
  - Provide strainer panels at 100 to 140m spacing. Panels to be as for 'End Panels' with an extra 2/3.15mm wire brace as indicated by broken lines.
  - Posts may be tea-tree, split hardwood or sawn timber.
  - Where fences turn 90° adopt an end panel going away in each direction.
  - Dowels, Grade 250 to AS 3679.
- C - General
- All dimensions in millimetres, unless shown otherwise.

A	ORIGINAL ISSUE	8/12/95
	REVISIONS	DATE

© INSTITUTE OF PUBLIC WORKS ENGINEERING AUSTRALIA QUEENSLAND DIVISION INC. -1995  
 DISCLAIMER. The authors and sponsoring organisations shall have no liability or responsibility to the user or any other person or entity with respect to any liability, loss or damage caused or alleged to be caused, directly or indirectly, by the adoption and use of these Standard Drawings including, but not limited to, any interruption of service, loss of business or anticipatory profits, or consequential damages resulting from the use of these Standard Drawings. Persons must not rely on these Standard Drawings as the equivalent of, or a substitute for, project-specific design and assessment by an appropriately qualified professional.



# FENCING

## WELDMESH FENCING AND CONTROL FENCE

GENERAL  
Standard  
Drawing  
G-0045



**NOTES:**

1. ALL CONCRETE TO BE GRADE N25.
2. GATE TO BE MOUNTED TO POST WITH TWO M12 GALVANISED STEEL BOLTS 40 LONG SUITABLY BURRED AFTER ERECTION.
3. HINGE LUGS TO BE 6 FILLET WELDED TO POST AND GATE PRIOR TO ERECTION.
4. ALL END AND MITRE JOINTS TO BE BUTT WELDED ALL AROUND.
5. ALL PIPES TO BE MEDIUM GAUGE HEAVY GALVANISED FINISHED WITH TWO COATS OF TWO PACK 125 MICRON MINIMUM TOTAL THICKNESS (eg WATTYL PARACRYL OR EQUIVALENT PROCESS). COLOUR TO MATCH COLORBOND "CAULFIELD GREEN".
6. ALL WELDS AND BARE METAL TO BE THOROUGHLY CLEANED AND PAINTED WITH COLD GALVANISING PRIMER PRIOR TO FINISH COAT.
7. DIMENSIONS ARE IN MILLIMETRES UNLESS SHOWN OTHERWISE.

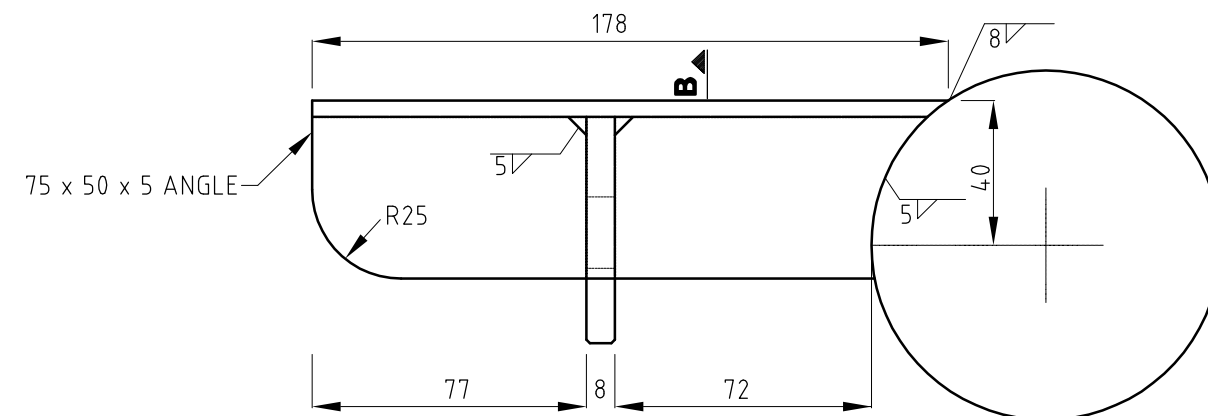


## POST HINGE DETAILS

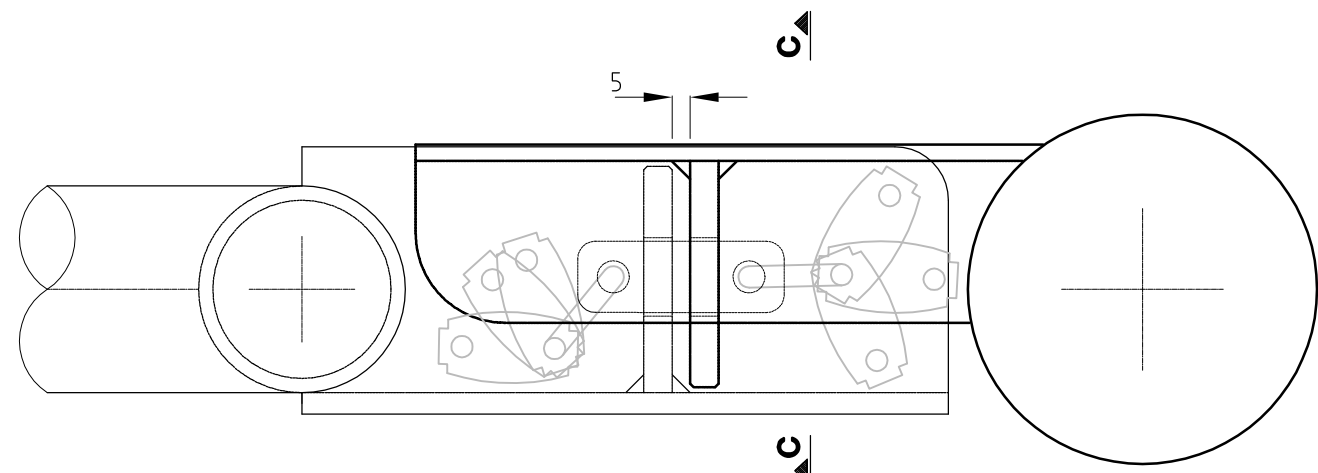


## GATE HINGE DETAILS

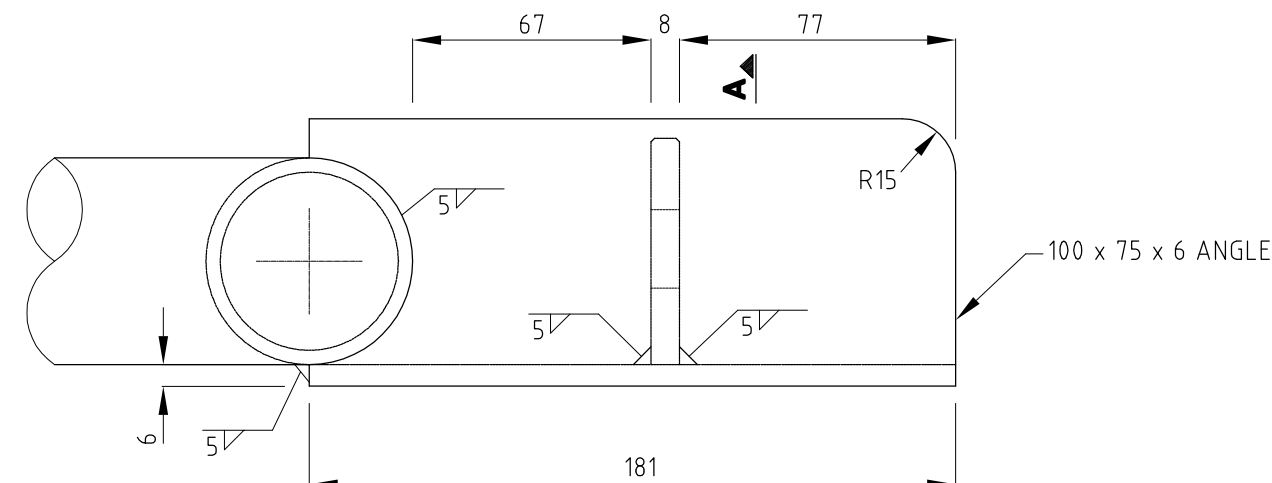
				<b>REDCLIFFE CITY COUNCIL</b> Copyright in the whole and every part of this drawing belongs to Redcliffe City Council and may not be used, sold, transferred, copied or reproduced in whole or in part in any manner or form or on any media, to any person other than by agreement with Redcliffe City Council.		<b>SURVEY:</b> <b>DESIGNED:</b>		<b>A3</b> <b>DATUM: A.H.D.</b>		 <b>IRENE STREET REDCLIFFE</b> <b>PO BOX 66, REDCLIFFE QLD 4020</b> <b>PHONE: (07) 3283 0233 FAX: (07) 3883 1723</b> <b>WEB SITE: www.redcliffe.qld.gov.au</b>		<b>RCC STANDARD DRAWINGS – GENERAL</b>		 <b>DATE: 16.05.06</b> <b>DRAWING No:</b>			
				This document is produced by Redcliffe City Council solely for the benefit of and use by RCC in accordance with the terms of the reseller. Redcliffe City Council does not and shall not assume any responsibility or liability whatsoever to any third party arising out of any use or reliance by third party on the content of this document.		<b>RECOMMENDED:</b>		<b>CHECKED:</b> <b>APPROVED:</b>				<b>FENCING AND GATES</b> <b>PARK GATE</b>		<b>G-0050</b>		<b>A</b>	
<b>A</b> <b>Rev.</b>		<b>ORIGINAL ISSUE</b>		<b>REVISIONS</b>		<b>REC.</b>		<b>APPR.</b>									



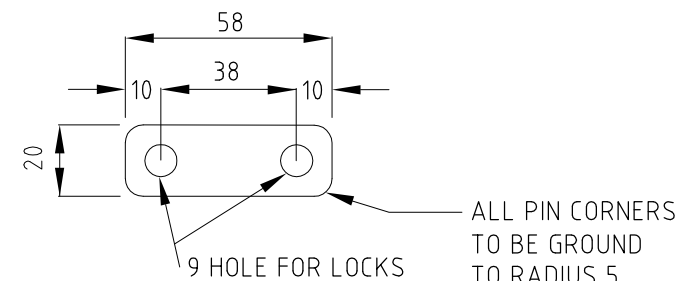
PLAN - POST MOUNTING



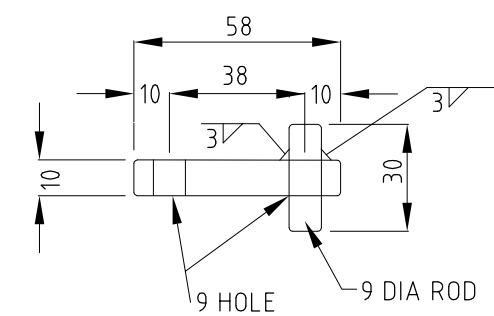
PLAN - GATE CLOSED



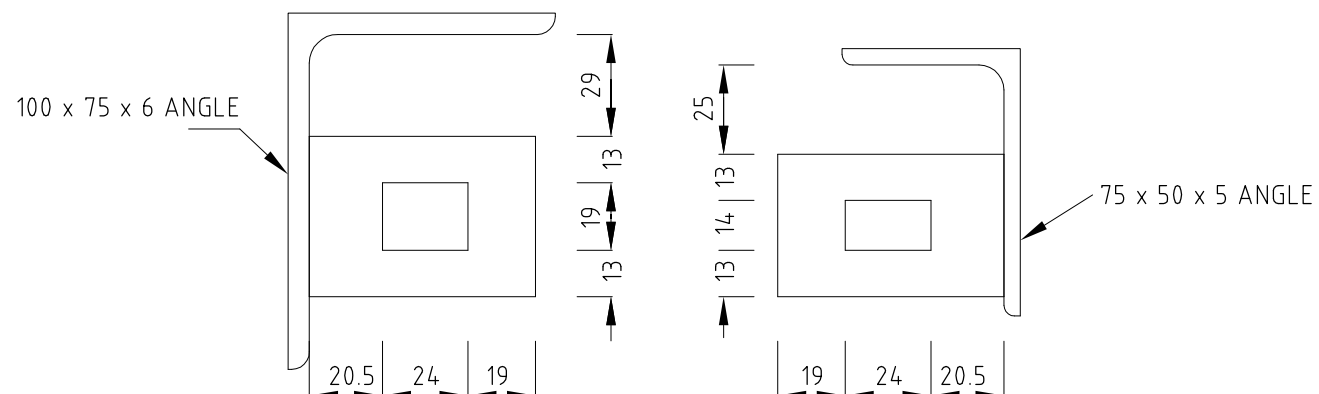
PLAN - GATE MOUNTING



PLAN - LOCK PIN - DOUBLE

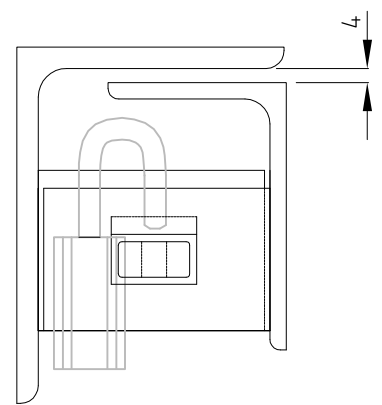


ELEVATION - LOCK PIN - SINGLE



SECTION A-A

SECTION B-B



SECTION C-C

NOTES

1. ALL WELDS AND BARE METAL TO BE THOROUGHLY CLEANED AND PAINTED WITH COLD GALVANISING.
2. DIMENSIONS ARE IN MILLIMETRES UNLESS SHOWN OTHERWISE.
3. ALL MATERIALS TO BE GALVANISED MILD STEEL.



LINEWORK

DESCRIPTION	SYMBOL	LINE THICKNESS	REMARKS
Shire boundaries		1.0	Name - Shire
Parish boundaries		1.0	Name - Parish
Real property alignment		0.25	
Fence not on boundary (exist - new)		0.25 / 0.35	Name fencing
Fence on boundary ( new - exist )		0.25	Name fencing
Existing easement		0.35	
Pegged traverse line		0.35	
Control line		0.35	
Grade line		0.35	
Driving line		0.35	At irregular intersections
Existing concrete kerb and channel		0.35	
New concrete kerb and channel		0.7	
New concrete kerb and channel showing lip levels		0.7 / 0.35	
Future kerb and channel		0.35	Name - FKC
Existing kerb		0.35	
New kerb		0.7	
Future kerb		0.35	Name - FK
Existing unsealed surface edge		0.35	
Existing edge of bitumen surface		0.35	
New bitumen - A.C. surface edge		0.5	
New road shoulder edge		0.5	
Entrance to property		0.35	
		0.7	
Creek - open drain invert		0.35	
Top of bank ( exist - new )		0.35 / 0.7	Name - Bank
Toe of bank ( exist - new )			
Building line		0.35	Name-BL
Edge of concrete slab		0.35	
Steel beam guardrail ( exist - new )		0.35 / 0.7	Guard rail
Railway line		0.35	Name - Railway
Handrail new		0.7	
Contours - existing		0.35	Major and intermediate
- new		0.5	Major and intermediate

BIKEWAY PLANS

Future bikepath		0.5	
Proposed bikepath		0.7	
Existing bikepath		0.35	
Proposed bikeroute		1.0	Name - Bikeroute
Existing bikeroute		0.35	Name - Bikeroute

GENERAL

DESCRIPTION	SYMBOL	LINE THICKNESS	REMARKS
Maximum height guage		0.35	Stream recordings
Gate		0.35	Shown as actual width
Bore hole		0.25	
Shrubs		0.25	
Tree small ( Trunk <Ø300 )		0.25	
Tree large ( Trunk >Ø300 )		0.25	
Australia post		0.25	Mail box
Buildings		0.35 / 0.25	
Telephone Box		0.35	

SURVEY AND CADASTRAL

Permanent survey mark		0.35	Brass plaque, deep mark, etc.
Bench mark		0.35	Temporary, existing mark
Cadastral survey mark		0.25	Existing R.P. tie
Traverse line		0.25	Engineering survey station
Survey control point		0.25	Engineering survey station
Surveyed spot height		0.25	Spot height located at cross

FLOOD MITIGATION PLANS

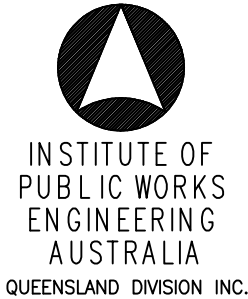
Top of channel works		0.7	
Toe of channel works		0.5	
Centreline of proposed channel		0.35	
Flood regulation line		0.35	Name - FRL.

LETTERING

DESCRIPTION	EXAMPLE	LINE THICKNESS	TEXT HEIGHT
Street names	<b>GEORGE ST.</b>	0.5 or 0.7	5
Chainages control/peg	<b>200 105.983</b>	0.7 / 0.5	5 / 3.5
Stations ( Point No. )	<b>5004</b>	0.35	2.5
Table headings	<b>LAYOUT</b>	0.5	4
Table sub-headings	<b>CHAINAGE</b>	0.35	2.5
Parish / portion details	<b>POR 351</b>	0.5 or 0.7	5
R.P. Description numbers	<b>6 R.P. 135987</b>	0.35	2.5
Notes	<b>NOTES</b>	0.35	2.5
Longitudinal section block	<b>INVERT LEVEL</b>	0.5	4

A	ORIGINAL ISSUE	8/12/95
	REVISIONS	DATE

© INSTITUTE OF PUBLIC WORKS ENGINEERING AUSTRALIA QUEENSLAND DIVISION INC. -1995  
DISCLAIMER. The authors and sponsoring organisations shall have no liability or responsibility to the user or any other person or entity with respect to any liability, loss or damage caused or alleged to be caused, directly or indirectly, by the adoption and use of these Standard Drawings including, but not limited to, any interruption of service, loss of business or anticipatory profits, or consequential damages resulting from the use of these Standard Drawings. Persons must not rely on these Standard Drawings as the equivalent of, or a substitute for, project-specific design and assessment by an appropriately qualified professional.



LEGENDS SHEET 1

GENERAL  
Standard  
Drawing  
G-0080

PUBLIC UTILITIES

DESCRIPTION	SYMBOL	LINE THICKNESS	REMARKS
Water Main ( exist – new )		0.25 / 0.35	Pipe diameter
Water meter ( Exist – new )		0.25 / 0.35	
Fire hydrant ( exist – new )		0.25 / 0.35	
Water valve ( exist – new )		0.25 / 0.35	
Telecommunications		0.25	Underground
Telecommunications		0.25	Overhead
Telecommunication pillar		0.35	Underground conduits
Telecommunication pit (exist – new)		0.25 / 0.35	Underground conduits
Telecommunication pole (exist-new)		0.25 / 0.35	Concrete, metal, wood. Overhead
Gas ( exist – new )		0.25 / 0.35	Under ground
Gas ( exist – new )		0.25 / 0.35	Valve, gas main, hp gas. Under ground
Moonie oil pipe line		0.25	
Moonie oil pipe line		0.25 / 0.35	Booster, sign, valve
Electricity (exist-new)		0.25 / 0.35	Underground
Electricity pillar ( exist – new )		0.25 / 0.35	Underground
Electricity pit ( exist – new )		0.25 / 0.35	Underground
Electricity pole ( exist – new )		0.25 / 0.35	Concrete, metal, wood poles
Street lighting conduit (single)		0.35	
Street lighting conduit (double)		0.35	
Light pole		0.35	Concrete, metal, wood poles
Sewerage Main ( exist – new )		0.25 / 0.35	Gravity below ground
Sewerage Main ( exist – new )		0.25 / 0.35	Rising Main below ground
Sewerage access chamber (exist-new)		0.25 / 0.35	NOM. I Dia.
Stormwater Pipe (Existing)		0.25	Nominal pipe size
Stormwater Pipe (New)		0.35	Drain diameter to scale
Stormwater Pipe (Future)		0.7 / 1.0	Drain diameter to scale
Stormwater access chamber (exist-new)		0.35 / 0.7	
Stormwater gully ( exist – new )		0.35	
Traffic Signals conduit (New)		0.35	

STREET LIGHTING

DESCRIPTION	SYMBOL	LINE THICKNESS	REMARKS
Proposed S50 luminaire at 6.5m mounting height		0.35	Can be mounted on EP or LP
Proposed S70 luminaire at 7.5m mounting height		0.35	Can be mounted on EP or LP
Proposed S100 luminaire at 9.0m mounting height		0.35	Can be mounted on EP or LP
Proposed S150 luminaire at 9.0m mounting height		0.35	Can be mounted on EP or LP
Proposed S250 luminaire at 10.5m mounting height		0.35	Can be mounted on EP or LP
Existing light ( MV )		0.35	
Existing light ( HPS )		0.35	
Existing light to be removed		0.35 / 0.5	
No. 4 preformed pit		0.35	QT pit
Highmast		0.35	Size and light type to be nominated.
Proposed m50 luminaire at 6.5m mounting height		0.35	Can be mounted on EP or LP
Proposed nostalgia Luminaire on 4.5m column		0.35	Underground supply only. Size and light type to be nominated
Proposed post top Luminaire on 4.5m column		0.35	Underground supply only. Size and light type to be nominated

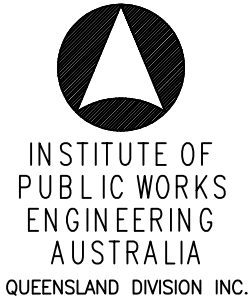
TRAFFIC FURNITURE

Traffic pit and conduit		0.25 / 0.35	
Traffic control box		0.25	
Traffic light		0.25	Boom, pillar
Guide sign (Exist – new)		0.25 / 0.7	Add sign number with details at advance direction series.
Standing sign (Exist – new)		0.25 / 0.7	Add sign number
Regulatory sign (Exist – new)		0.25 / 0.7	Add sign number
Parking meter		0.25	

● Sign numbers are detailed in AS 1742.

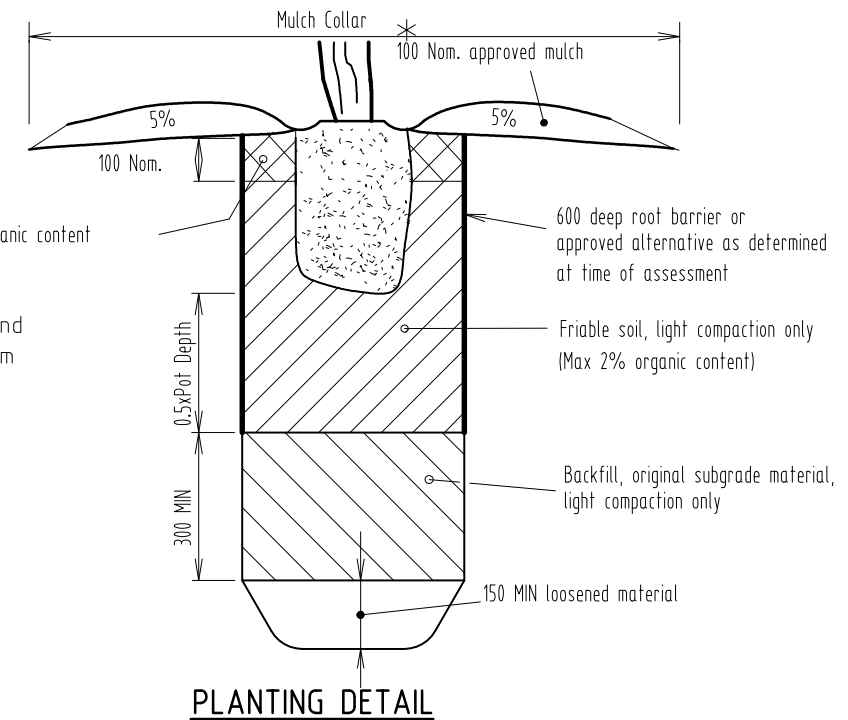
A	ORIGINAL ISSUE	8/12/95
	REVISIONS	DATE

© INSTITUTE OF PUBLIC WORKS ENGINEERING AUSTRALIA QUEENSLAND DIVISION INC. –1995  
DISCLAIMER. The authors and sponsoring organisations shall have no liability or responsibility to the user or any other person or entity with respect to any liability, loss or damage caused or alleged to be caused, directly or indirectly, by the adoption and use of these Standard Drawings including, but not limited to, any interruption of service, loss of business or anticipatory profits, or consequential damages resulting from the use of these Standard Drawings. Persons must not rely on these Standard Drawings as the equivalent of, or a substitute for, project-specific design and assessment by an appropriately qualified professional.



LEGENDS SHEET 2

GENERAL  
Standard  
Drawing  
G-0081



4. All dimensions in millimetres.

				REDCLIFFE CITY COUNCIL Copyright in the whole and every part of this drawing belongs to Redcliffe City Council and may not be used, sold, transferred, copied or reproduced in whole or in part in any manner or form on any media, to any person other than by agreement with Redcliffe City Council.		SURVEY: A3 DATUM: A.H.D.		 IRENE STREET REDCLIFFE PO BOX 66, REDCLIFFE QLD 4020 PHONE: (07) 3283 0233 FAX: (07) 3883 1723 WEB SITE: <a href="http://www.redcliffe.qld.gov.au">www.redcliffe.qld.gov.au</a>		RCC STANDARD DRAWINGS - GENERAL		 DERIVED FROM IPWEAQ STANDARD DRAWINGS		DATE: 16.05.06							
						DESIGNED:		CHECKED:				TREE PLANTING TREE PLANTING INCLUDING ROOT BARRIERS				DRAWING No:					
A		ORIGINAL ISSUE		This document is produced by Redcliffe City Council solely for the benefit of and use by RCC in accordance with the terms of the retainer. Redcliffe City Council does not and shall not assume any responsibility or liability whatsoever to any third party arising out of any use or reliance by third party on the content of this document.		RECOMMENDED:		APPROVED:										G-0100		A	
Rv.		DATE		REVISIONS		REC.		APPR.													