



SUPPLEMENTARY AGENDA

General Meeting - 500

28 January 2020

LIST OF SUPPLEMENTARY ITEMS

6 LIFESTYLE & AMENITY SESSION (Cr D Sims)

ITEM 6.1	3
COUNCIL FEEDBACK - DRAFT SEQ KOALA CONSERVATION STRATEGY 2019-2024 - REGIONAL	
REPORT DETAIL	
SUPPORTING INFORMATION	
#1 Presentation to Council 23 January 2020	
#2 Submission to Department of Environment and Science (DES)	

6 LIFESTYLE & AMENITY SESSION (Cr D Sims)

ITEM 6.1

COUNCIL FEEDBACK - DRAFT SEQ KOALA CONSERVATION STRATEGY 2019-2024 - REGIONAL

Meeting / Session: 6 LIFESTYLE & AMENITY
Reference: A19603661 : 23 January 2020 - **Refer Supporting Information A19601872; A19601963; A19604058**
Responsible Officer: RM, Manager, Environmental Services (CES Environmental Services)

Executive Summary

On Sunday, 8 December 2019, the State Government's Department of Environment and Science (DES) released the Draft South East Queensland Koala Conservation Strategy 2019-2024 (Strategy) and proposed koala habitat mapping (mapping) for public consultation. Included in the release were scheduled community consultation sessions at various locations across South East Queensland (SEQ).

Comments on the mapping were open for two weeks and closed on Sunday, 22 December 2019. Submissions on the Strategy close on Friday, 31 January 2020.

Having considered the Strategy and associated mapping, feedback has been prepared for submission to DES prior to Friday, 31 January 2020.

OFFICER'S RECOMMENDATION

That a submission be provided to the State Government on the Draft South East Queensland Koala Conservation Strategy 2019-2024 and proposed koala habitat mapping, in line with the feedback as outlined in this report.

ITEM 6.1 COUNCIL FEEDBACK - DRAFT SEQ KOALA CONSERVATION STRATEGY 2019-2024 - REGIONAL - A19603661 (Cont.)

REPORT DETAIL

1. Background

In 2016, the Queensland Government formed a Koala Expert Panel (the Panel) in response to the Uniquist report titled "South East Queensland Koala Population Modelling Study", which identified that koalas in urban environments had continued to decline.

The Panel's final report detailed six recommendations on changes to policy to address the ongoing decline in koalas in South East Queensland. In May 2018, the Queensland Government subsequently announced that it supported all six recommendations from the Panel, including development of new koala habitat mapping and the creation of a Koala Advisory Council (KAC). The Local Government Association of Queensland (LGAQ) is a member of the KAC and represents the interests of local governments .

During 2019, LGAQ and DES undertook confidential consultation with local governments regarding the proposed koala protection measures and associated mapping. As requested, Council submitted comments to LGAQ and DES.

On Sunday, 8 December 2019, DES released the Draft SEQ Koala Conservation Strategy 2019-2024 and associated mapping for public consultation. Comments on the mapping were open for two weeks and closed on Sunday, 22 December 2019. Submissions on the Strategy close on Friday, 31 January 2020.

Officers completed an initial assessment of the Strategy, associated mapping and proposed community consultation sessions. On Council's behalf, correspondence was forwarded to DES on 19 December 2019 expressing concerns regarding the proposed koala habitat mapping and the absence of community consultation sessions within the Moreton Bay region.

In response to the concerns raised, DES arranged additional sessions at the Aspley Hypermarket on Monday, 13 January and Tuesday, 14 January 2020 and Morayfield Shopping Centre on Monday, 20 January and Tuesday, 21 January 2020.

On 23 January 2020, the Manager, Environmental Services provided Council with an update regarding the Strategy and associated mapping (see supporting information #1).

2. Explanation of Item

The Strategy includes a number of commitment statements and high-level actions to facilitate the long-term persistence of koalas in the wild across SEQ. The Strategy also supports the State Government's new mapping methodology, which identifies core koala habitat being located in Key Priority Areas (KPA) across SEQ.

Having considered the Strategy and associated mapping, feedback has been prepared for submission to DES prior to 31 January 2020 (refer supporting information #2).

Key points include:

1. Koala Priority Area (KPA) and associated mapping

- Concerns regarding the Strategy's focus on the KPA. In addition, the effect of a changing climate, including eucalyptus forest die back, in parts of the KPA;
- Concerns regarding the proposed mapped koala habitat, as expressed in Council's previous feedback.
- The lack of protection of known habitat trees, corridors and linkages that enable koalas to move across the Moreton Bay region;
- The limited opportunity afforded to the public to review the proposed koala habitat mapping in context with the Strategy; and

ITEM 6.1 COUNCIL FEEDBACK - DRAFT SEQ KOALA CONSERVATION STRATEGY 2019-2024 - REGIONAL - A19603661 (Cont.)

- A request for a meeting with DES and Department of State Development, Manufacturing, Infrastructure and Planning (DSDMIP), to identify additional opportunities to protect biodiversity values and enhance wildlife corridor links throughout the Moreton Bay region, as part of Council's Planning Scheme.

2. Rehabilitation of Koala Habitat

- The Strategy identifies a koala habitat rehabilitation target of 1,000 hectares across SEQ over the life of the Strategy which may not be sufficient to support the recommendations of the KEP.
- Queensland Trust for Nature (QTfN) have been appointed by the Queensland Government to deliver the koala habitat rehabilitation with a delivery target of 250 hectares. The significant difference between the Strategy's rehabilitation target and the QTfN's delivery target is of concern.
- A request to work collaboratively to enhance koala habitat within the Moreton Bay region as part of the QTfN delivery program.

3. Strategic Implications

3.1 Legislative / Legal Implications

The proposed koala habitat protection measures are in draft form and the implementation date has not been released.

As indicated in the Strategy, a range of planning amendments will form part of the implementation phase however, they have not been released for comment.

Amendments to Council's Planning Scheme may be required and additional details are currently being sought from the State Government regarding this matter.

3.2 Corporate Plan / Operational Plan

Valuing Lifestyle: Healthy natural environment - a clean and healthy environment.

3.3 Policy Implications

While the Strategy includes some actions that will facilitate koala viability in the Moreton Bay region, it is focused at a SEQ regional level.

Consequently, in accordance with Council's recently revised Koala Conservation Policy (Policy: 2150-003), officers will continue to develop and implement local koala conservation initiatives in partnership with industry, community and government, to support viable populations of koala across the Moreton Bay region.

3.4 Risk Management Implications

The Queensland Koala Expert Panel report: *A new direction for the conservation of koalas in Queensland* and the Strategy aim to ensuring the persistence of koala populations in the wild across SEQ.

The limited time available to the public to review the areas of koala habitat proposed to be protected within the Moreton Bay region, in context with the Strategy, is of concern.

3.5 Delegated Authority Implications Nil identified

3.6 Financial Implications Nil identified

3.7 Economic Benefit Implications Nil identified

ITEM 6.1 COUNCIL FEEDBACK - DRAFT SEQ KOALA CONSERVATION STRATEGY 2019-2024 - REGIONAL - A19603661 (Cont.)

3.8 Environmental Implications

At a SEQ region scale, the overarching area of koala habitat proposed to be protected (i.e. the defined Koala Priority Area) is approximately 300,000 hectares.

For the Moreton Bay region, the defined KPA encompasses approximately 135,000 hectares, is generally located in the west of the region, and the majority of the KPA is outside the Urban Footprint.

Mapped koala habitat located within the KPA will be prohibited from clearing, subject to a number of exemptions, with no requirement to mitigate or offset the impact. Clearing of mapped koala habitat location outside the KPA is to be avoided, mitigated, or offset.

Koala habitat that is not mapped is not afforded protection.

3.9 Social Implications Nil identified

3.10 Consultation / Communication

Council
LGAQ
DES
DSDMIP

SUPPORTING INFORMATION

Ref: [A19601872](#); [A19601963](#); [A19604058](#)

The following list of supporting information is provided for:

ITEM 6.1

COUNCIL FEEDBACK - DRAFT SEQ KOALA CONSERVATION STRATEGY 2019-2024 - REGIONAL

#1 Presentation to Council 23 January 2020

#2 Submission to Department of Environment and Science (DES)

ITEM 6.1 - COUNCIL FEEDBACK - DRAFT SEQ KOALA CONSERVATION STRATEGY 2019-2024 - REGIONAL (Cont.)
#1 Presentation to Council 23 January 2020

State Government SEQ Koala Conservation Strategy and mapping

January 2020



Draft SEQ Koala Conservation Strategy 2019-24

- Released on 8 December 2019
- Open for consultation until 31 January 2020
 - Submissions through “Have Your Say” - www.qld.gov.au/about/contact-government/have-your-say
 - Community information drop-in sessions (various dates in January 2020)
 - Daisy Hill Koala Centre
 - Beenleigh Events Centre
 - Venue 114 Bokarina
 - North Ipswich Reserve Corporate Centre
 - Aspley Hypermarket
 - The Sanctuary Markets, Currumbin Wildlife Sanctuary
 - Morayfield Shopping Centre

Koala Habitat mapping

- Released on 8 December 2019
- Consultation closed on 22 December 2019
 - Submissions via des.smartygrants.com.au/KoalaHabitatConsultation
 - Focus was on removing anomalies, such as areas that have been developed
 - Spatial mapping (“Biomaps”) no longer accessible
- MBRC correspondence to DES (via CEO) – 19 December 2019
 - Concern regarding mapping extent across Moreton Bay region

Summary - KPA and mapping

New Koala Priority Area (KPA) established

- At a SEQ scale, the area of protection is large
- Mapped Koala Habitat in KPA is prohibited from clearing (subject to exemptions)
- Mapped Koala Habitat outside the KPA is to be avoided, minimised, offset
- KPA generally in west of the MBRC region

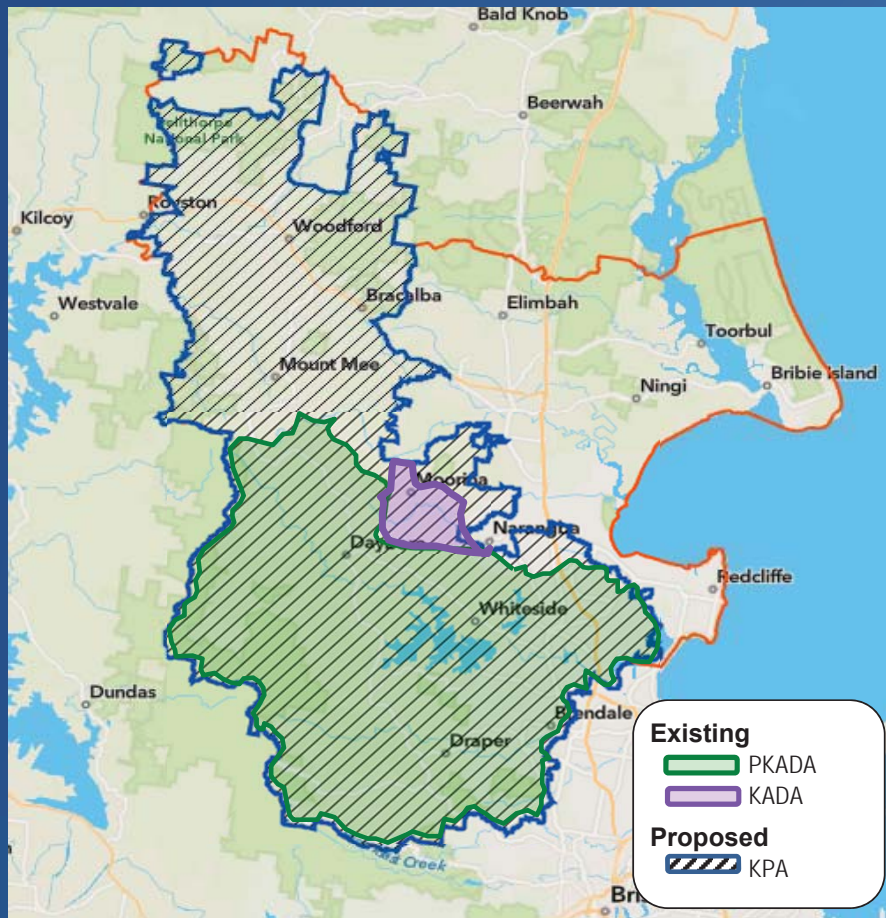
New mapping methodology introduced that defines “koala habitat”

- References to “koala habitat” in the Strategy means newly mapped koala habitat
- Uses regional ecosystem and high-value regrowth mapping provided by the Queensland Herbarium
- Does not mean all koala habitat trees e.g. eucalyptus/gum trees
- Where the land is not a koala habitat area, no koala conservation controls are proposed to apply.
- Targets in Strategy - ‘no net loss’ of koala habitat - is based on the mapped koala habitat only

Key message:

- Where the land is not a koala habitat area, no koala conservation controls are proposed to apply.
- If it is mapped, exemptions still apply

Mapping - Koala Priority Areas (KPAs) in MBRC



Existing protection area:

- Priority Koala Assessable Development Area (PKADA - green) – 77,258 ha
- Koala Assessable Development Area (KADA- purple) – 3,774 ha

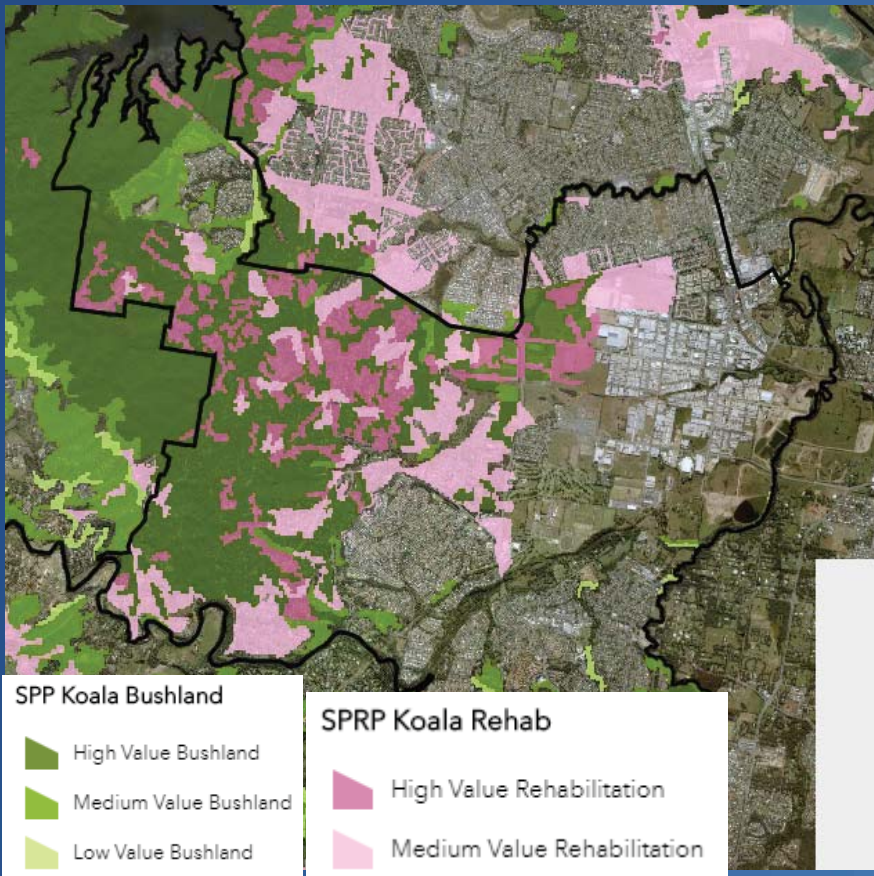
Proposed new KPA (blue) = approx. 135,000 ha

- Majority of KPA is outside Urban Footprint

Total KPA across SEQ approx. 300,000 ha

Existing State Government Koala Habitat Mapping

Reflected in current MBRC planning scheme



- Bushland Habitat (green) = clearing prohibited
- Rehabilitation Habitat (pink) = avoid, minimise, offset
- Offset:
 - ratio of 3:1 or
 - \$920 per non-juvenile koala habitat tree

Screenshot* - Joyner area – within KPA



New Koala Habitat Mapping

- Koala Habitat (core) = dark green
- Locally Refined Koala Habitat mapping = light green

Inside KPA

- Mapped Koala habitat prohibited from clearing
- If trees are not mapped, they can be cleared with no offset or mitigation required

Outside KPA

- Mapped Koala habitat - Avoid, minimise, offset

* Publicly available DES proposed koala habitat mapping December 2019

Key Considerations - Koala Conservation Strategy

Koala habitat

- Focus on 'core' (i.e. mapped) koala habitat
- Western areas are key focus for long-term koala population security - weather/climate impacts, eucalyptus forest dieback
- Trees that are known to be utilised by koalas as food and refuge may not be afforded protection
- Mitigation provisions, including offsets, not required for any clearing within KPA
- Limited public consultation on the proposed mapping in context with the Strategy
- Impact of exemptions

Koala habitat rehabilitation

- Rehabilitation target for SEQ region (1,000 ha over life of Strategy)
- Targets collaboration with private landowners and local governments
- Differences between Strategy target (1,000 ha) and delivery target (Queensland Trust for Nature – 250 ha)

Koala population

- Limited support for individual koalas in the landscape (SEQ region and locally)
- Koala movement – habitat links missing
- No accurate # of koalas across SEQ region – revised survey methodology required
- Advances in survey and monitoring tools need consideration (drones and koala detection dogs)
- Support for wildlife carer groups limited

Threat reduction

- Chlamydia vaccine actions limited - requires renewed focus
- Liaison with Local Governments regarding wild dog and domestic dog management - supported

Next Steps

1. Submit comments on Strategy to DES by 31 January 2020
2. request meeting with DES/DSDMIP regarding:
 - Implications to Council's planning scheme
 - Options to review and identify Matters of Local Environmental Significance (MLES) within the Planning Scheme
3. Continue to liaise with local wildlife groups and the community on:
 - Implementation of local koala conservation measures, aligned with Council's Koala Conservation Policy, and
 - Submissions to DES on the Strategy

ITEM 6.1 - COUNCIL FEEDBACK - DRAFT SEQ KOALA CONSERVATION STRATEGY 2019-2024 - REGIONAL (Cont.)

#2 Submission to Department of Environment and Science (DES)

Enquiries	Robyn Moffat
Phone	(07) 3205 0555
Our Ref	A19601963: RM
Your Ref	---
Date	23 January 2020

Mandy Downes
A/Executive Director
Conservation Policy and Planning
Department of Environment and Science
GPO Box 2454
BRISBANE QLD 4001

Dear Ms Downs,

Feedback - Draft SEQ Koala Conservation Strategy 2019-2024

Thank you for the opportunity to provide feedback on the Draft SEQ Koala Conservation Strategy 2019-2024 (Strategy). Council would like to submit the following comments regarding the Strategy.

Koala Priority Area (KPA) and associated mapping

For the Moreton Bay Regional Council area (MBRC area) the existing Priority Koala Assessable Development Area (PKADA) and Koala Assessable Development Area (KADA) covers an area of 81,032 hectares. The new proposed Koala Priority Area (KPA) covers approximately 135,000 hectares.

Council understands the KPA is aimed at “ensuring the persistence of koala populations in the wild across SEQ” (Strategy - page 5). From the spatial information provided by the Department of Environment and Science (DES), approximately 115,000 hectares of the KPA in the Moreton Bay region is located outside the urban footprint in the west.

Council notes that the SEQ region, particularly the bushland forest areas, is under stress due to prolonged dry conditions and eucalyptus forest die back has been observed in the western parts of the Moreton Bay region.

Consequently, Council recommends that the Queensland Government consider the effect of a changing climate, including drought, bushfires and reduced rainfall, on koala habitat within the proposed KPA and ascertain whether these matters will influence the likelihood of “ensuring the persistence of koala populations in the wild across SEQ”.

In relation to the proposed mapped koala habitat, as expressed in Council's previous correspondence (30 July, 29 August and 19 December 2019), it is understood that a decision has been made to adopt a new koala habitat mapping methodology which is based on the Queensland Government's regional ecosystem classification for remnant and regrowth vegetation.

Council also noted that koalas are known to rely on habitat outside of areas mapped as remnant and regrowth. The proposed mapping indicates that approximately 15,000 hectares of koala habitat may be able to be removed 'as of right' within the Moreton Bay region, with no requirement for offset or alternative mitigation measures.

Consequently, Council remains concerned that the resultant mapping is not a true and accurate representation of koala habitat across SEQ. Council recommends that the Queensland Government undertake a review, to ascertain whether the proposed mapping meets the recommendations of the Koala Expert Panel final report (Rhodes et. at, 2017)^.

Council also notes that the koala habitat mapping was released to the public for comment for two weeks, prior to Christmas 2019. The Queensland Government's spatial platform (Biomaps) used to facilitate this review has since been removed from the DES website. Council's residents are therefore unable to review the areas of koala habitat proposed to be protected within the Moreton Bay region, in context with the Strategy.

Council considers the limited time provided to review the proposed koala habitat mapping is insufficient and meaningful feedback on the Strategy may not be provided. Subsequently, Council recommends that additional opportunities are afforded to the public to review the details of the proposed mapping, in a spatial mapping format, alongside the Strategy.

Rehabilitation of koala habitat

The Strategy states that the Queensland Government will "commence rehabilitation to restore 1,000 hectares of cleared habitat in KPA in SEQ over the life of the Strategy".

Council is aware that the Queensland Government have allocated \$1.96 million to deliver the koala habitat restoration via the Koala Habitat Restoration Partnership Program (KHRPP) and have appointed Queensland Trust for Nature (QTfN) to complete this project.

Further, Council understands that information regarding the delivery of this project has been circulated to conservation groups and landowners (refer enclosure #1).

QTfN has advised Council that they have been commissioned by the Queensland Government to revegetate 100 hectares of koala habitat and improve 150 hectares by assisted regeneration over the life of the Strategy.

Council is concerned about the difference between the rehabilitation target stated in the Strategy compared with the delivery target provided to QTfN. In addition, based on the proposed koala habitat mapping across the Moreton Bay region, Council is also concerned that 1,000 hectares may be insufficient to meet the recommendations of the Koala Expert Panel final report (Rhodes et. at, 2017)^.

^ Rhodes, J.R., A.Hood, A.Melzer, and A.Mucci. (2017) *Queensland Koala Expert Panel: A new direction for the conservation of koalas in Queensland. A report to the Minister for Environment and Heritage Protection.* Queensland Government, Brisbane.

Council requests confirmation that the Queensland Government are committed to providing funding to rehabilitate a minimum of 1,000 hectares of koala habitat over the life of the Strategy. Additionally, Council seeks the opportunity to work with the Queensland Government to enhance koala habitat throughout the Moreton Bay region, as part of the delivery program.

Request for meeting

The proposed amendments, including the proposed KPA, changes to areas of mapped koala habitat and proposed new development application assessment manager provisions will have a direct impact on Council's planning scheme and development assessment roles and responsibilities.

Consequently, Council requests a meeting with representatives from Department of State Development, Manufacturing, Infrastructure and Planning (DSDMIP) and DES, to discuss these impacts and to identify opportunities to protect biodiversity values and enhance wildlife corridor links throughout the Moreton Bay region.

Additional comments

Additional comments on specific sections of the Strategy have been prepared by Council's Environment Officers and Planning Officers and are submitted by Council for consideration (refer enclosure #2).

Thank you again for the opportunity to provide feedback on the Draft SEQ Koala Conservation Strategy 2019-2024. Should you require any further information or assistance, please contact Robyn Moffat, Manager, Environmental Services on 0417 646 547 or robyn.moffat@moretonbay.qld.gov.au

Yours sincerely

Greg Chemello
Chief Executive Officer

Enc: #1: Queensland Trust for Nature - Koala Habitat Restoration EOI information
#2: Additional comments - Draft SEQ Koala Conservation Strategy 2019-2024
CC: Greg Hallam AM, CEO LGAQ

Enclosure #1 - Queensland Trust for Nature - Koala Habitat Restoration EOI information

Koala Habitat

Restoration Partnership Program



WHY PARTICIPATE?

To safeguard the survival of koala populations in South East Queensland (SEQ), the Queensland Koala Expert Panel has recommended a coordinated and strategic approach to koala conservation across government, community, industry and non-government organisations. To reverse population declines we need to combine our respective skills and resources to restore koala habitat in strategic areas of SEQ. The Department of Environment and Science (DES) and Queensland Trust for Nature (QTFN) are collaborating to support local governments and landowners to put forward land restoration project applications by **31st January 2020**.

WHAT IS THE PROCESS?

QTFN will complete a transparent assessment framework that scores all proposed revegetation and restoration sites at three stages:

1. **Desktop assessment** to determine if the project meets site context requirements;
2. QTFN to conduct a **field assessment** and determine the restoration potential of the site;
3. **Regional cost-benefit analysis** to determine the suite of projects which will achieve maximum koala habitat gain with the resources available.

WHAT WILL QTFN PROVIDE?

Project partners will receive funding to support their restoration project. The landholder will receive project management, procurement, covenant and planting support from QTFN staff who are experts in ecology, restoration and conservation on private land. All project sites will be monitored and reported on using Wentworth foundation '*Accounting for nature*' standards to highlight our collective efforts and koala habitat gains.

Aim 1: Develop a **mechanism** for prioritising, funding and monitoring koala habitat restoration at a regional scale;

Aim 2: In five years **revegetate** 100 ha of koala habitat and improve 150 ha by **assisted regeneration** on private and Local Government land;

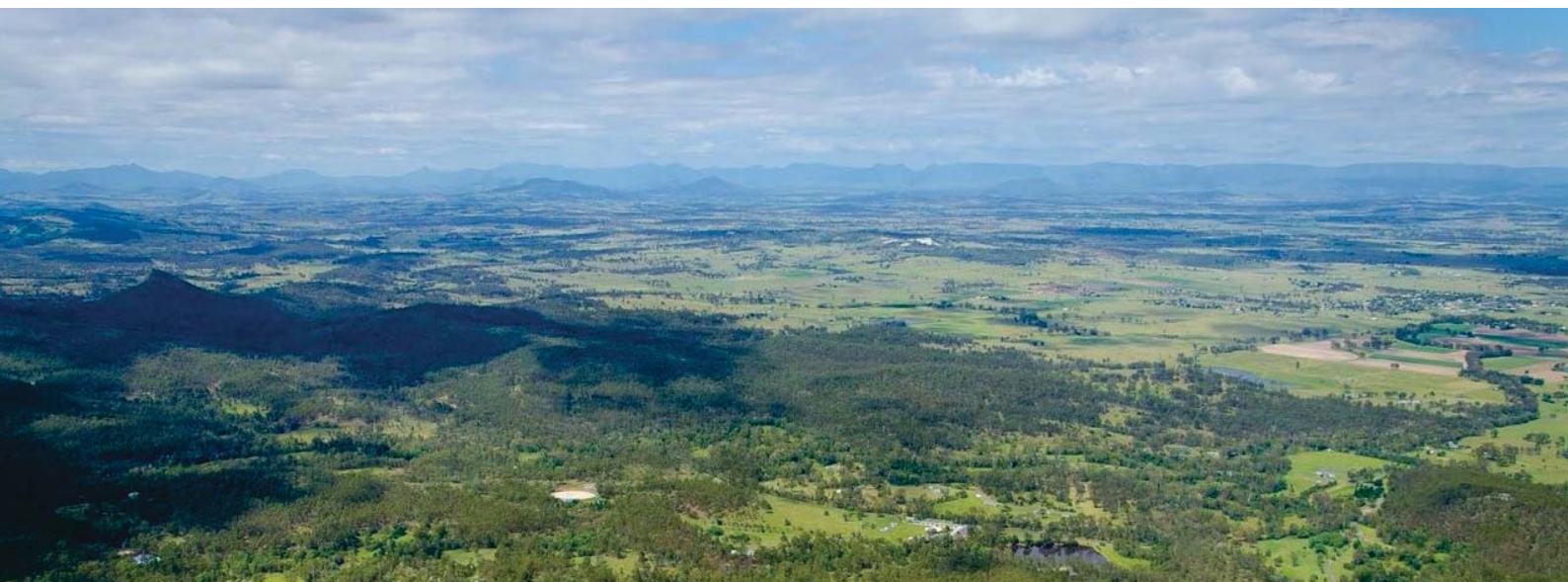
Aim 3: Provide a standardised, scientifically robust and scalable **monitoring framework**.

HOW WILL MY SITE BE ASSESSED?

In the **desktop assessment** sites will be scored out of 2 based on their size, their potential to extend and connect existing habitat patches, and their position within strategic areas and corridors.

The **field assessment** will provide an additional score out of 8 relating to the current and future number, age structure and diversity of koala food trees, condition of dispersal blocking weeds, and the regional ecosystem-specific carrying capacity for koalas measured as both activity and occupancy.

The **regional cost-benefit analysis** will assess all projects together, and allocate funds to projects based on potential gain in koala habitat quality and koala population per project dollar spent and potential leveraging of co-funding through environmental markets.



The Koala Habitat Restoration Partnership Program or KHRPP is a 5-year, \$1.96 million project funded by the Queensland Government to restore koala habitat in strategic areas of southeast Queensland





Queensland
Government



KOALA HABITAT

Restoration Partnership Program

Expression of Interest

The Koala Habitat Restoration Partnership Program (KHRPP) is a 5-year, \$1.96 million project funded by the Queensland Government to restore koala habitat in strategic areas of South East Queensland (SEQ).

Queensland Trust for Nature (QTFN) has been contracted to deliver the program and is seeking expressions of interest and applications for project funding through the KHRPP. Enclosed in this pack is a fillable pdf document with guidelines and criteria for submitting your EOI and your responses will automatically populate a database of all potential project sites.

We will use information provided in the form and information gathered during site visits, to strategically allocate restoration funds in a way that maximises gains in koala habitat for the resources available.

Each applicant is invited to submit up to five sites for consideration. Please complete a single form for each site. In returning your form to QTFN please follow the directions below.

1

You will need to open and fill this form in Adobe Acrobat Reader for the fillable components to work. This program is free and can be downloaded from <https://get.adobe.com/reader/>

2

Once all sections are complete please save a local copy of your form on your computer by clicking the File>Save As button. Keep this copy for yourself and as a back-up if your submission through Adobe Tracker fails.

3

On the top-right corner of your form will be a 'Submit' button. When you click this Adobe will place your filled form into a reply email to QTFN ready for submission. Some email services will automatically send this email, but others will require you to send the pre-prepared email from your outbox. Please click submit, follow Adobe prompts, and check your email outbox to ensure it has been sent.

4

In addition to this submission, please send an additional email to QTFN (info@qtnf.org.au) with the following documents attached:

- your maps or polygons of restoration areas
- any supporting documents such as revegetation methodologies
- your locally saved version of this pdf



SECTION 1: APPLICANT DETAILS

Local government area

Responsible officer

Contact details (email)

Contact details (phone)

SECTION 2: PROPERTY INFORMATION

Property address

Property lot/s on plan

Total size of property (ha)

Current land tenure

- Freehold
- Leasehold
- Trustee

- Council conservation estate
 - Other council reserve
 - Other
-

Does the property have any encumbrances or other interests on the Title?

- Yes
 - No
-

If yes, please describe:

ITEM 6.1 - COUNCIL FEEDBACK - DRAFT SEQ KOALA CONSERVATION STRATEGY 2019-2024 - REGIONAL (Cont.)



SECTION 3: PROJECT MANAGEMENT

Tick which best applies to the site.

- Our team has all the capabilities and experience needed to run a large scale (>10ha) revegetation or assisted regeneration program that guarantees 85% survival of trees
- Our team has some experience with small revegetation projects but would like to access some sourcing, contractor or project management expertise from QTFN
- Our project has limited revegetation experience and would like assistance from QTFN in project planning and delivery

If you intend on managing your project alone, please tick forms of project milestones you would prefer

- We do the works and use QTFN assessment methods to report on annual project milestones
- We do the works but QTFN assess project milestones
- QTFN do the works but we use QTFN assessment methods to report on annual project milestones
- QTFN do the works and manage assessment and milestones



SECTION 4: SITE ACCESS AND LOGISTICS

Difficult access or topography may render some sites in need of additional resources. Access will be costed and assessed during the field visit, however your answers to these questions will help us rank sites according to their access constraints.

Tick which best applies to the site.

- Sealed or well graded tracks to project site
- Flat and easily traversed 4WD tracks to project site
- Steep, poor condition 4WD tracks to project site
- General access tracks but >500m of no track to the project site

Tick any that apply to the topography of the site.

- Flat or slightly undulating throughout
- Shallow slope <15°
- Steep slope >15° with rocky outcrops

SECTION 5: RESTORATION SITE INFORMATION

QTFN would like to work with each property to achieve maximum koala habitat gains for the site's current condition and available resources. The information you provide here will assist us in determining the potential state-wide impact of your proposed site for increasing koala habitat.

Please tick which applies to you.	<input type="checkbox"/> I want to work with QTFN ecologists to construct a restoration plan that creates the greatest koala habitat gain possible for my property and budgetary constraints <input type="checkbox"/> I have set works that I am inflexible about (e.g. revegetation of one area) but willing to negotiate areas in addition <input type="checkbox"/> I am not flexible about any elements of the scope or type of proposed works
Current land use	<input type="checkbox"/> The land is conservation purposes only <input type="checkbox"/> The land is primarily conservation with some recreational activities such as hiking, trail riding or mountain biking <input type="checkbox"/> The land is partial conservation and partial other land use such as recreational reserve, dog park, hobby farm, community garden etc. <input type="checkbox"/> The land is currently or was recently used for significant productive agricultural or forestry purposes
What kind of restoration activity do you propose for the site?	<input type="checkbox"/> Restoration by revegetation <input type="checkbox"/> Restoration by assisted natural regeneration (e.g. weed control, direct seeding, ecological burns) <input type="checkbox"/> A combination of both
What is the combined size of the site you wish to revegetate and assisted regenerate in hectares?	<input type="checkbox"/> <5ha <input type="checkbox"/> 5-10ha <input type="checkbox"/> 10-20ha <input type="checkbox"/> 20-60ha <input type="checkbox"/> >60ha
How many hectares of each?	<div style="display: flex; justify-content: space-between;"> Revegetation Assisted regeneration </div>
To accompany your application please include one of the following in your reply email and tick the option you have elected to provide:	
<input type="checkbox"/> A kml or shapefile polygon of areas to be revegetated <input type="checkbox"/> A kml or shapefile polygon of areas for assisted regeneration <input type="checkbox"/> A sketch on a printed property map <input type="checkbox"/> GPS points for the extremities of a polygon of area to be revegetated <input type="checkbox"/> GPS points for the extremities of a polygon of area for assisted regeneration	
Please rate your willingness to guarantee the perpetuity of the restoration site through an on-title protection mechanism	<input type="checkbox"/> I agree to enter a covenant option <input type="checkbox"/> I am agreeable to some form of protection but would like more information about options <input type="checkbox"/> I am not familiar with covenants and would like more information about protection options <input type="checkbox"/> I am not interested in entering a covenant option
Please provide justification or more details regarding your selection	

SECTION 6: KOALA POPULATION AND THREATS

As part of the field assessment component of this program QTFN staff will conduct a koala survey of your site using standardised assessment methods, however knowledge of ongoing survey programs will help us design these surveys.

Tick which best applies to the site.	<input type="checkbox"/> No information about koalas in or around the site <input type="checkbox"/> Evidence of presence (found scat, scratches etc.) <input type="checkbox"/> Recorded sightings with location and date kept on record <input type="checkbox"/> Formal one off or repeated surveys using standard methods (SAT, KRAM)
Tick any that apply to the site.	<input type="checkbox"/> It adjoins a main road with no koala crossings, signs, go slow zones or fencing <input type="checkbox"/> A predator control program is in place in the area <input type="checkbox"/> It adjoins suburban lots with no pet restrictions <input type="checkbox"/> There have been recorded koala predation events within 5km of the site



SECTION 7: BUDGET

As part of this assessment QTFN will be prioritising projects to ensure the maximum gain in koala habitat is achieved for the available resources. Council's must co-fund any proposed project, and QTFN is willing to work with suitable project officers on finding commercial co-funding for any projects of suitable size.

Tick which best applies to you.	<input type="checkbox"/> I am interested in finding commercial partners to fund restoration activities (e.g. biodiversity offsets, carbon markets etc.) <input type="checkbox"/> I am interested in using or accessing volunteers and donations to support the project <input type="checkbox"/> I can contribute in-kind or financial assistance to the project
I would like to use QTFN revegetation and assisted regeneration techniques and costings	<input type="checkbox"/> Yes <input type="checkbox"/> No
<i>If no, please insert in this box the cost of your methodology cost/ha and attach a restoration manual or plan that includes an itemized budget</i>	
Tick which best applies to you.	<input type="checkbox"/> I can negotiate both works and budget <input type="checkbox"/> I can negotiate works but not budget <input type="checkbox"/> I cannot change works or budget

ITEM 6.1 - COUNCIL FEEDBACK - DRAFT SEQ KOALA CONSERVATION STRATEGY 2019-2024 - REGIONAL (Cont.)

SECTION 8: BUDGET FOR REVEGETATION

ITEM	IN-KIND OR YOUR CONTRIBUTION	REQUESTED FROM KHRPP
Site preparation <small>(e.g. ripping, slashing, spray rings and tree holes)</small>		
Pre-planting woody weed control <small>(e.g. Lantana, Schinus, Cats claw creeper etc.)</small>		
Tracks & access <small>(e.g. grading, establishing, fire trails)</small>		
Fencing <small>(e.g. where stock are present, fencing is mandatory)</small>		
Trees, seeds & planting <small>(e.g. tube stock, seeds, direct seeding, and associated labour)</small>		
Watering & follow-up <small>(e.g. post-planting watering, post-planting infill)</small>		
Post-planting weed control <small>(e.g. woody and pasture weeds that compromise planting)</small>		
TOTALS		

SECTION 9: BUDGET FOR ASSISTED REGENERATION

ITEM	IN-KIND OR YOUR CONTRIBUTION	REQUESTED FROM KHRPP
Site preparation <small>(e.g. ripping, slashing, spray rings and tree holes)</small>		
Pre-planting woody weed control <small>(e.g. Lantana, Schinus, Cats claw creeper etc.)</small>		
Tracks & access <small>(e.g. grading, establishing, fire trails)</small>		
Fencing <small>(e.g. where stock are present, fencing is mandatory)</small>		
Trees, seeds & planting <small>(e.g. tube stock, seeds, direct seeding, and associated labour)</small>		
Watering & follow-up <small>(e.g. post-planting watering, post-planting infill)</small>		
Post-planting weed control <small>(e.g. woody and pasture weeds that compromise planting)</small>		
TOTALS		

Moreton Bay Regional Council

ITEM 6.1 - COUNCIL FEEDBACK - DRAFT SEQ KOALA CONSERVATION STRATEGY 2019-2024 - REGIONAL (Cont.)

Enclosure #2 - Additional comments - Draft SEQ Koala Conservation Strategy 2019-2024		
Comment no.	Page no.	Comment
1	4	The Strategy does not propose new actions or initiatives. Actions and initiatives contained in the Strategy have been identified and applied in some form across South East Queensland (either by the State or Local Governments) in the past. In addition, the Strategy does not contain actions or initiatives that will afford <i>additional</i> protection for koalas into the future. This is an important omission.
2	7	Spatial modelling - Refer comments from Moreton Bay Regional Council (MBRC) dated 30 July 2019, 29 August 2019 and 19 December 2019
3	7	Coordinated, strategic delivery - In the Moreton Bay Council area (particularly the PKADA and KADA defined areas), the area of habitat proposed for protection is significantly less than provided for in the current planning provisions. In addition, the new mapping removes the requirement to offset impacts. As a result, over 15,000 ha of land that contains trees that local koala populations utilise may be able to be removed "as of right", without any mitigation measures. MBRC recommends that the State Government clearly articulate the impacts of the "new approach", including on-ground ramifications in areas of high koala populations, such as the Moreton Bay region.
4	8	Koala occurrence records included in the State Government mapping tool (Biomaps) indicate widespread koala populations across the MBRC region and use of habitat outside the proposed (mapped) koala habitat areas. As per Council's correspondence dated 19 December 2019, there are concerns that koalas are known to rely on habitat outside of areas mapped as remnant and regrowth vegetation. Based on this evidence, Council asserts that the recommendations of the Koala Expert Panel may not be met.
5	9	<p>Exemptions -</p> <p>There are currently:</p> <ul style="list-style-type: none"> • 22 general exemptions, • 10 exemptions relating specifically to freehold land, • 11 exemptions relating specifically to Aboriginal land, • 7 exemptions relating specifically to Land Leased under the Land Act, • 9 exemptions relating specifically to land dedicated as a road under the Land Act, • 3 exemptions relating specifically to Particular trust land under the Land Act, • 2 exemptions related specifically to Unallocated State Land, and • 2 exemptions relating specifically to Land Subject to a license or permit under the Land Act. <p>Of note, a new exemption was enacted on 6 December 2019 regarding the establishment of fire management lines around infrastructure as accepted development (i.e. no planning application required). The definition of infrastructure is very broad: "includes a building, or other structure, built or used for any purpose". The net effect of this exemption is unknown, however, it provides for the removal of mapped koala habitat 'as of right'.</p> <p>MBRC recommends that the State Government undertake ongoing review of the impacts of exemptions to (mapped) koala habitat and include the results of this review in the annual evaluation of the Strategy.</p>
6	9	Map released for feedback - The map of the Koala Conservation Plan map [Koala Priority Area (KPA)] was not released as a spatial layer in a GIS/mapping tool such as Biomaps. The Koala Conservation Plan map was only provided within the Strategy as a high-level PDF, with no scale. In addition, there was no provision provided by the State Government to facilitate feedback on the Koala Conservation Plan map. Advice from DES

Moreton Bay Regional Council

ITEM 6.1 - COUNCIL FEEDBACK - DRAFT SEQ KOALA CONSERVATION STRATEGY 2019-2024 - REGIONAL (Cont.)

		confirmed that the consultation on the mapping between 8 December 2019 and 22 December 2019 was focused on removing anomalies in the 'core' habitat mapping. Subsequently MBRC asserts that this statement in the Strategy is misleading and recommends that public is afforded the opportunity to comment on the Koala Conservation Plan map [Koala Priority Area (KPA)].
7	9	Locally refined koala habitat areas - refer comments from MBRC dated 30 July 2019, 29 August 2019 and 19 December 2019.
8	13	<p>Since Shaping Queensland was gazetted, there has been a net loss in koala habitat across SEQ. Proposed changes to the defined (mapped) koala habitat will directly influence the ShapingSEQ target of 'no net loss' target and future evaluation results.</p> <p>MBRC notes that the 'no net loss in koala habitat' means 'no net loss in <i>mapped</i> koala habitat'. MBRC recommends that the State Government insert the word 'mapped' into this sentence.</p> <p>As per MBRC's correspondence dated 19 December 2019, approximately 15,000 hectares containing koala habitat trees has not been mapped by the State Government and therefore is not afforded protection. Concerns remain that koalas are known to rely on habitat outside of areas mapped as remnant and regrowth vegetation. Based on this evidence, Council asserts that the recommendations of the Koala Expert Panel may not be met.</p>
9	13	Koala populations - no long-term decline - No information is provided in the Strategy on proposed location of monitoring sites. It is further noted that areas of the KPA are heavily vegetated and a variety of survey methodologies will be required, including drones and koala detection dogs. MBRC recommends that the State Government provide additional information in the Strategy regarding the proposed location of monitoring sites and survey methodologies.
10	13	<p>Threat reduction - Focus on disease mitigation (chlamydia drugs, treatment and vaccines) is critical. Various populations within the Moreton Bay region have up to 50% disease rates (<i>per comms</i> Dr Jon Hanger Endeavour Veterinary Ecology). MBRC recommends that the State Government provide additional information in the Strategy regarding disease mitigation, specifically targeted at koala chlamydia disease.</p>
11	13	Threat reduction - The location of the 10 key road threat hot spots should be released for comment. In addition, review of the target "to reduce impacts by 25%" is required. Costs to install road retrofits Vs benefit is also required, ensuring that the benefit includes a significant reduction in koala deaths. In some circumstances a target of 25% will not be appropriate.
12	17	<p>Exemptions -</p> <p>There are currently:</p> <ul style="list-style-type: none"> • 22 general exemptions, • 10 exemptions relating specifically to freehold land, • 11 exemptions relating specifically to Aboriginal land, • 7 exemptions relating specifically to Land Leased under the Land Act, • 9 exemptions relating specifically to land dedicated as a road under the Land Act, • 3 exemptions relating specifically to Particular trust land under the Land Act, • 2 exemptions related specifically to Unallocated State Land, and • 2 exemptions relating specifically to Land Subject to a license or permit under the Land Act.

Moreton Bay Regional Council

GENERAL MEETING - 500
28 January 2020

PAGE 30
Supplementary Agenda

ITEM 6.1 - COUNCIL FEEDBACK - DRAFT SEQ KOALA CONSERVATION STRATEGY 2019-2024 - REGIONAL (Cont.)

		<p>Of note, a new exemption was enacted on 6 December 2019 regarding the establishment of fire management lines around infrastructure as accepted development (i.e. no planning application required). The definition of infrastructure is very broad: "includes a building, or other structure, built or used for any purpose". The net effect of this exemption is unknown, however, it provides for the removal of mapped koala habitat 'as of right'.</p> <p>MBRC recommends that the State Government undertake ongoing review of the impacts of exemptions to (mapped) koala habitat and include the results of this review in the annual evaluation of the Strategy.</p>
13	17	Protect 300,000 hectares of (mapped) koala habitat - Exemptions will impact on this figure/target. As above, analysis will be required to ensure that this target can be met over the life of the Strategy.
14	17	The number of exemptions and accepted clearing options for landholders will impact the protection of koala habitat in the Koala Priority Area. MBRC recommends that the State Government undertake ongoing review of the impacts of exemptions to (mapped) koala habitat and include the results of this review in the annual evaluation of the Strategy.
15	19	Updating the mapping and amending errors - Refer comments from MBRC in correspondence dated 19 December 2019.
16	20	<p>Strategic assessment - This section requires additional details to better inform the public regarding the Commonwealth's <i>Environment Protection and Biodiversity Conservation Act 1999</i> (EPBC Act), associated protection measures for koala and differences between Federal Government and the State Government's regulations.</p> <p>Based on the proposed koala habitat mapping, the Commonwealth's EPBC Act requirements will be stricter than the proposed State Government provisions in various areas of the Moreton Bay region. MBRC recommends that Local Governments across SEQ be involved in the discussions regarding the Strategic Assessment review, to ensure that proposals align with local priorities.</p>
17	21	<p>Koala Expert Panel recommendation - Financial resources dedicated to koala habitat restoration requires defining and acknowledgment/acceptance of costs to establish koala habitat.</p> <p>To date, information provided regarding available funding for koala habitat restoration (e.g. \$/ha) fall considerably short of actual costs (site preparation, planting, maintenance).</p> <p>MBRC recommend a number of funding arrangements be developed, including 1:1 funding and fully State Government funding for areas deemed critical/highest priority.</p> <p>Specific incentives to foster the ability for landowners and rural based SEQ local governments to participate in restoration activities is also recommended.</p>
18	24	Climate change impact on koalas - The majority of the KPA is located in the western areas of SEQ and therefore are under direct threat from bushfires and a changing climate. MBRC recommends that the State Government undertake ongoing review of the impacts of a changing climate on koala habitat and include the results of this review in the annual evaluation of the Strategy.
19	24	Researching disease - Disease research is also undertaken or lead by universities. MBRC recommend inserting specific support for universities into the Strategy.
20	24	<p>Koala carers - Carers require more than just support to 'standardise record keeping and reporting'. Carers require financial support for travel expenses to and from hospitals. In addition, wildlife carers require financial assistance for equipment and training.</p> <p>MBRC recommend inserting specific support for wildlife carers into the Strategy, including annual funding for operational expenses.</p>
21	25	Translocation Methods & Guidelines - This policy is considered urgent for the MBRC region.

GENERAL MEETING - 500
28 January 2020

PAGE 30
Supplementary Agenda

Moreton Bay Regional Council

GENERAL MEETING - 500
28 January 2020

PAGE 31
Supplementary Agenda

ITEM 6.1 - COUNCIL FEEDBACK - DRAFT SEQ KOALA CONSERVATION STRATEGY 2019-2024 - REGIONAL (Cont.)

		<p>As a result of the proposed koala habitat mapping, a significant number of koala habitat trees utilised by koalas may not be afforded protection. In some cases, this will result in the 'as of right' clearing of koala habitat trees and it is likely that koalas (and other wildlife) will not be able to move safely to alternative locations.</p> <p>The State Government will need to provide specific advice and guidance to the development industry and wildlife carers in these instances. In addition, the State Government should also consider specific communications for the general community regarding the proposed mapping and the 'as of right' ability to clear vegetation, not mapped as koala habitat.</p>
22	25	<p>Reducing dog attacks - MBRC implements a comprehensive wild dog management program across the region.</p> <p>MBRC recommends that the State Government liaise with local governments, via LGAQ, to coordinate SEQ region wide wild dog management strategies, targeting State managed land .</p>
23	32	<p>Updates to mapping - refer comments from MBRC dated 30 July 2019, 29 August 2019 and 19 December 2019.</p> <p>MBRC recommends that the Strategy clearly defines that it is only 'mapped' koala habitat that is protected.</p>
24	36	<p>2f - Clarity is required on this statement, including the effect on the Inter-urban break between Moreton Bay Regional Council and Sunshine Coast Council.</p> <p>For example, does this statement indicate that the urban footprint is likely, in the future, to extend into Inter-urban break between Moreton Bay Regional Council and Sunshine Coast Council to compensate for the loss of growth in the western areas of SEQ (i.e. to protect the koala habitat in KPA)? MBRC request clarification from the State Government on this matter.</p>
25	39	<p>4.3 - There is limited information or explanation on this action item.</p> <p>MBRC request the State Government provide context, regarding action item 4.3.</p>