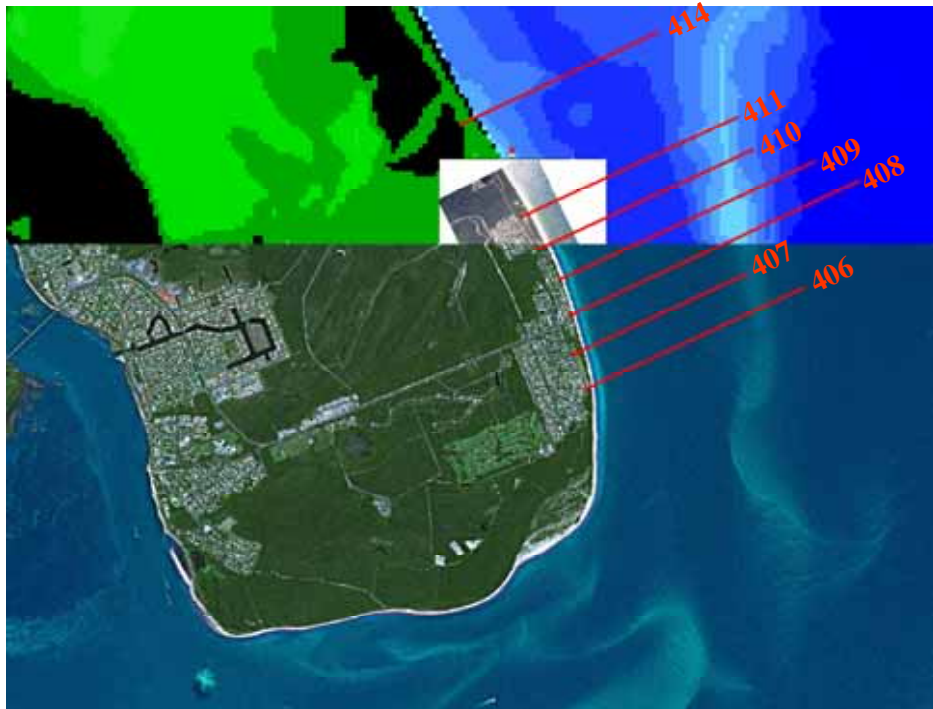
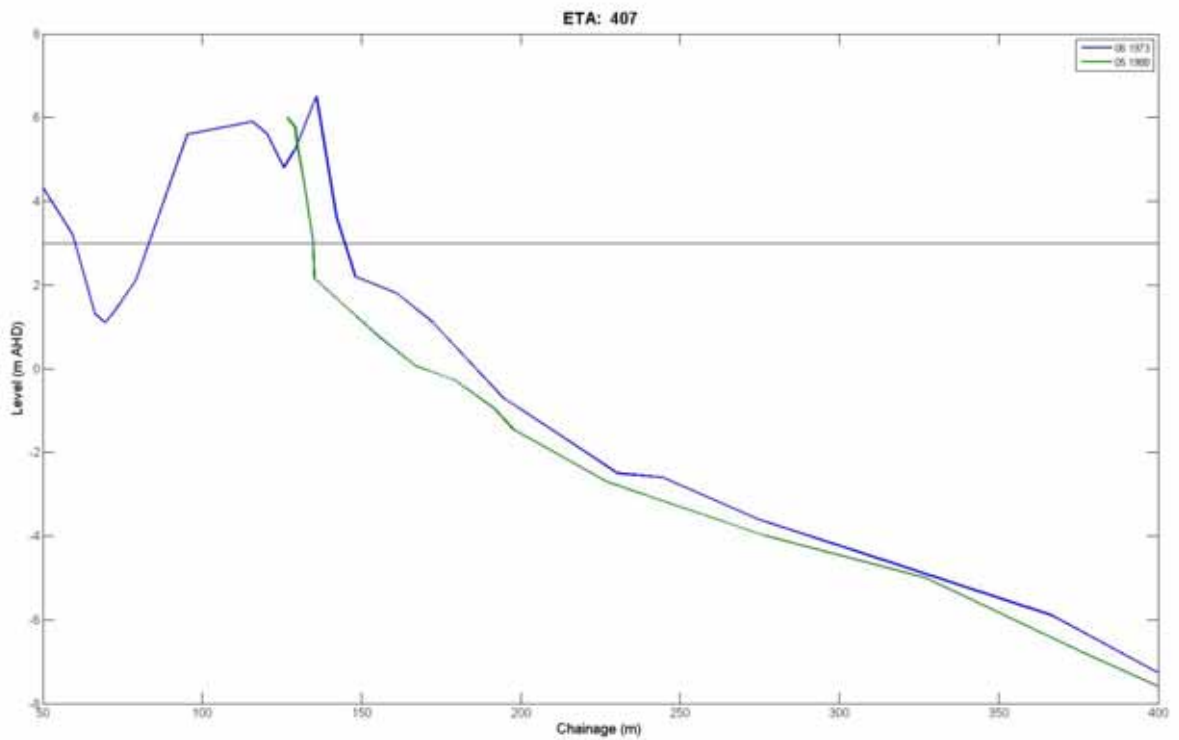
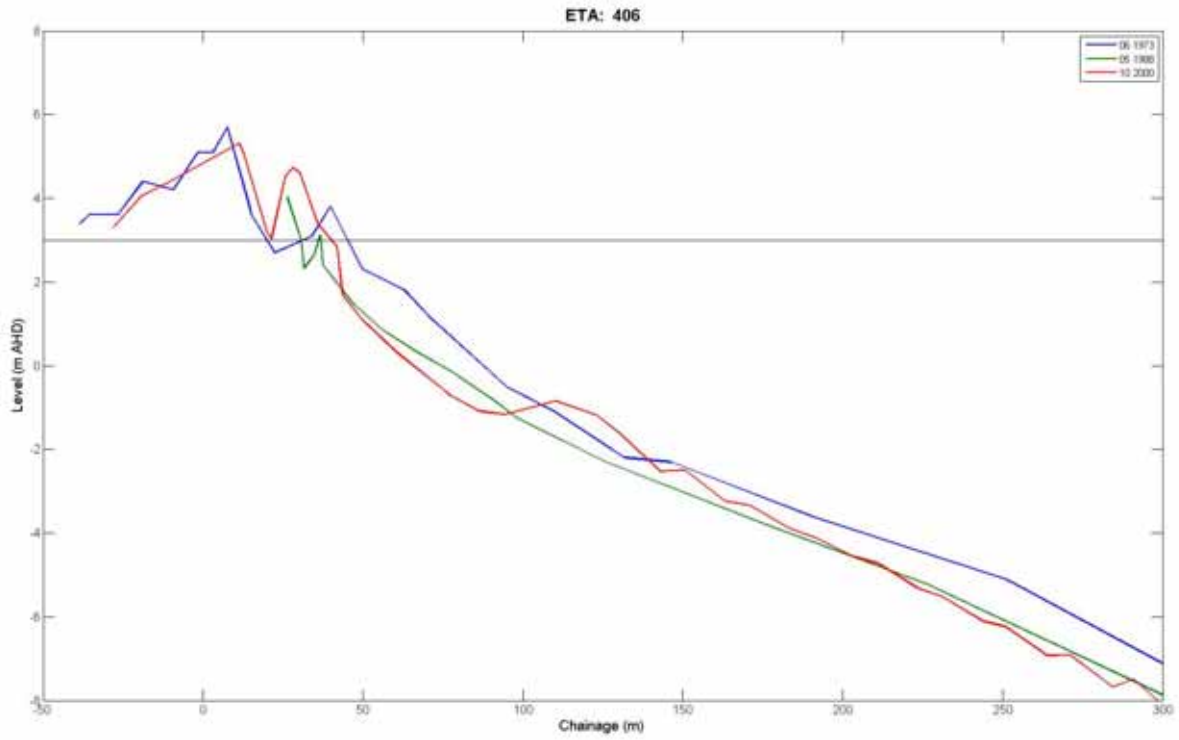
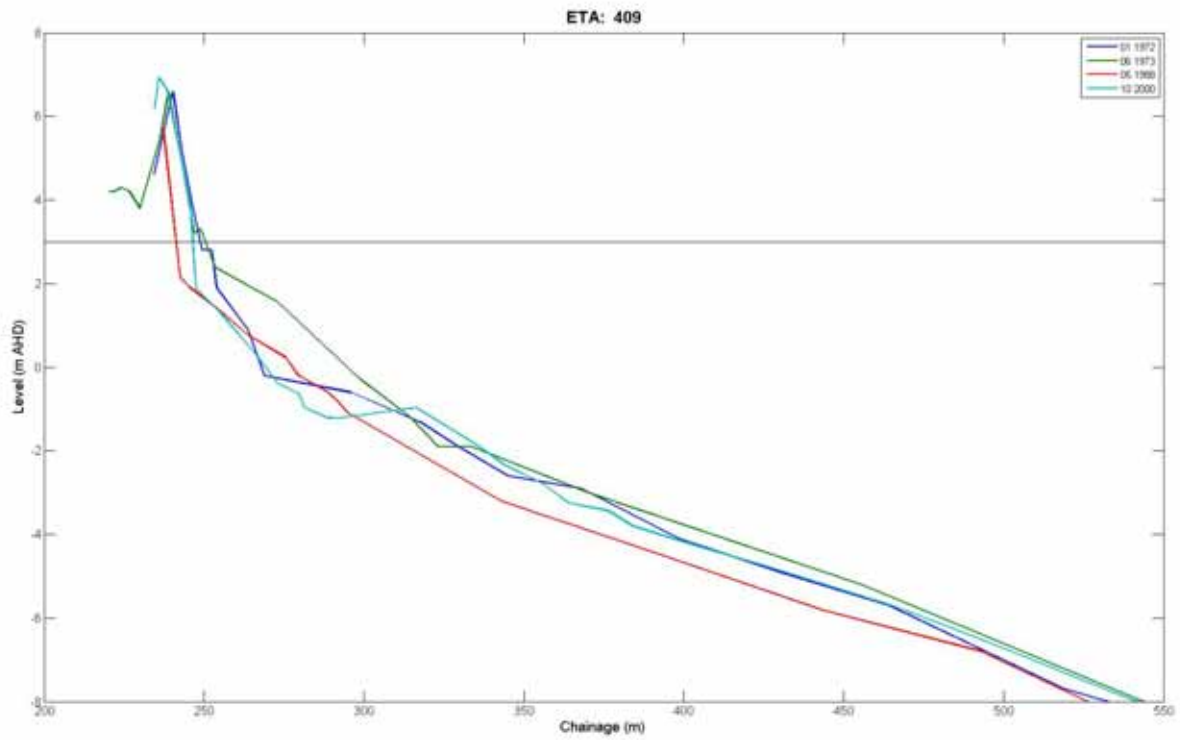
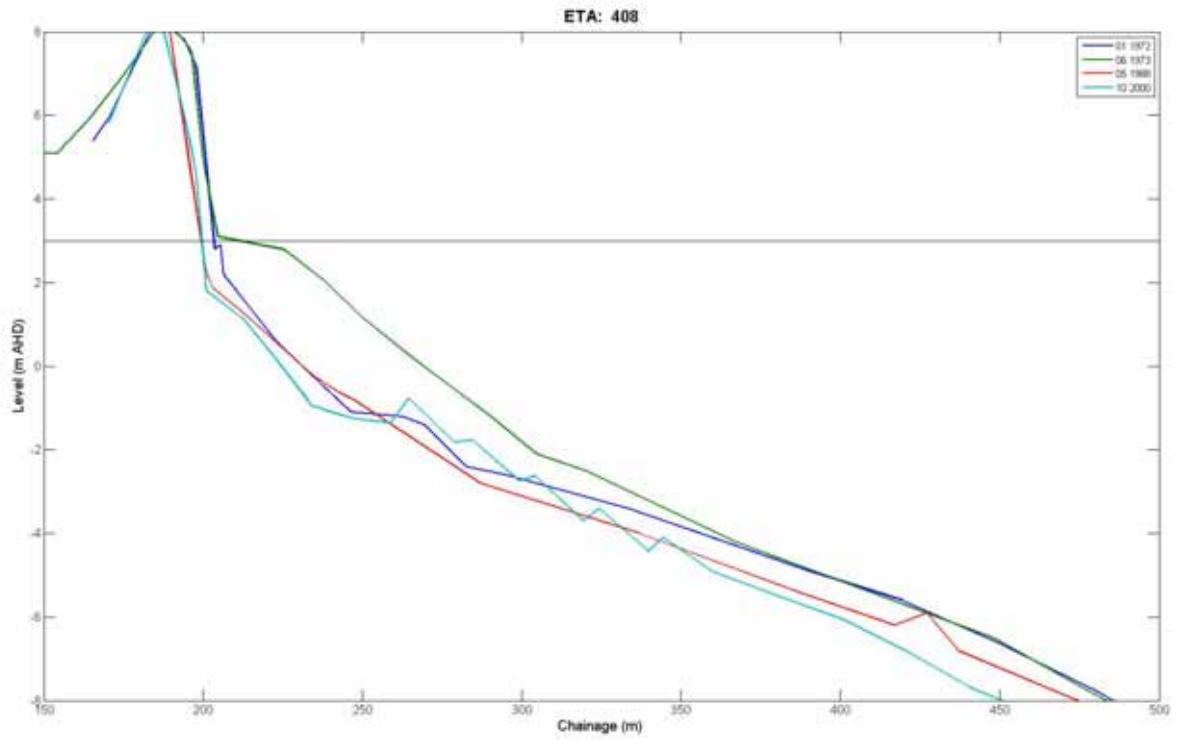


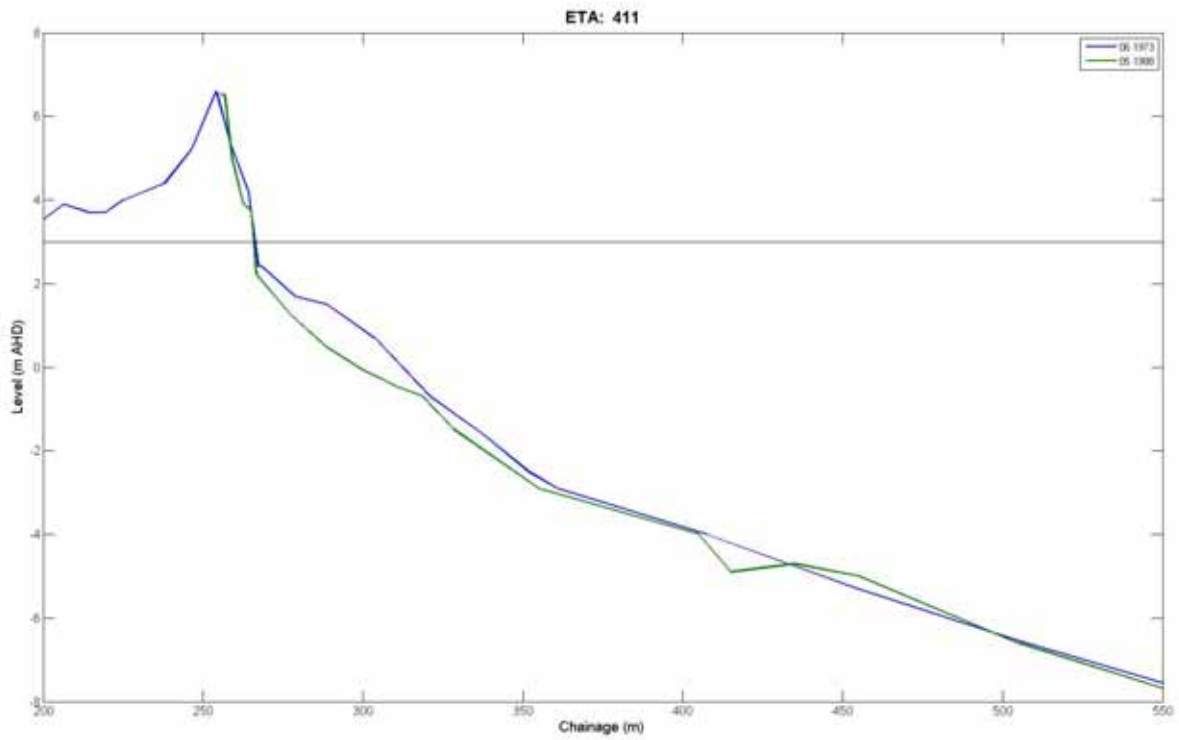
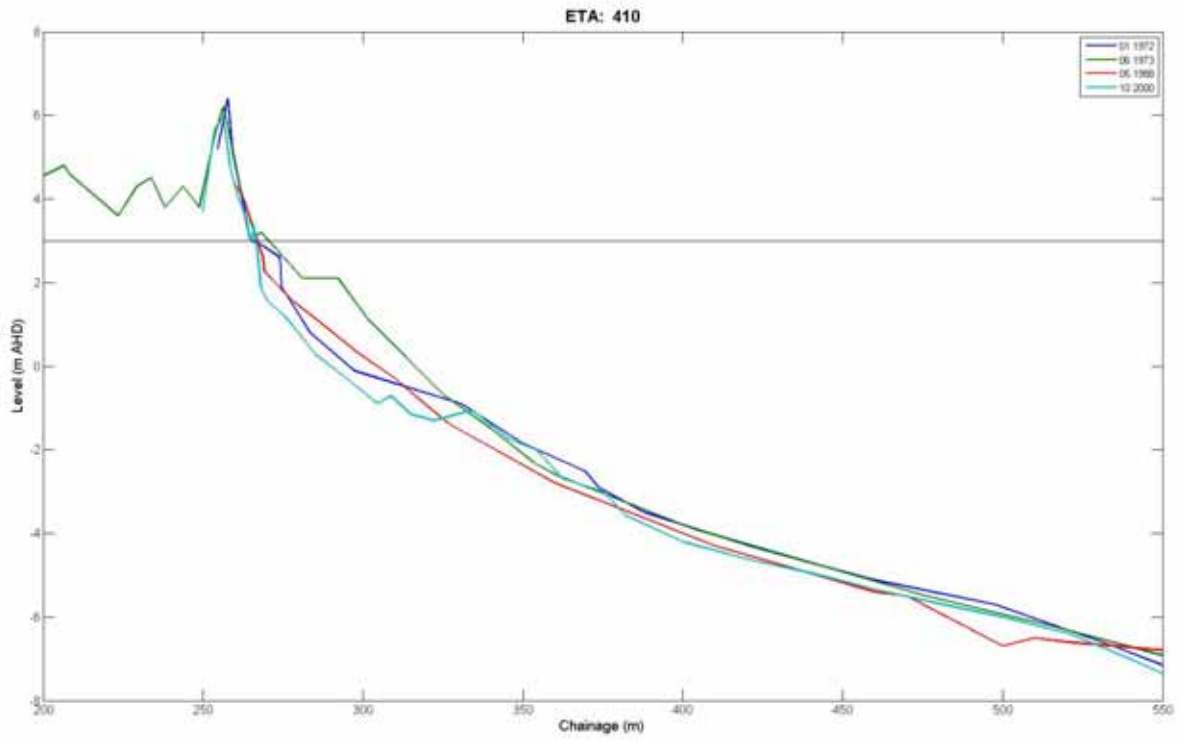
# APPENDIX A: BEACH PROFILE SURVEYS

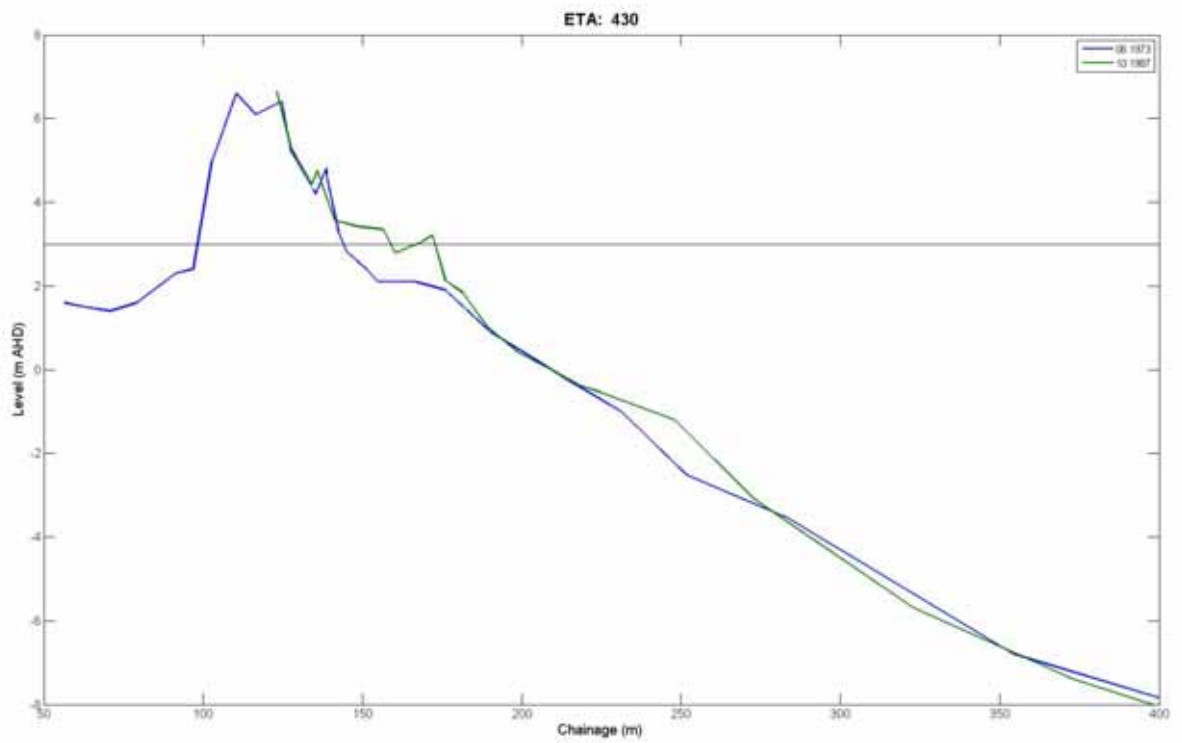
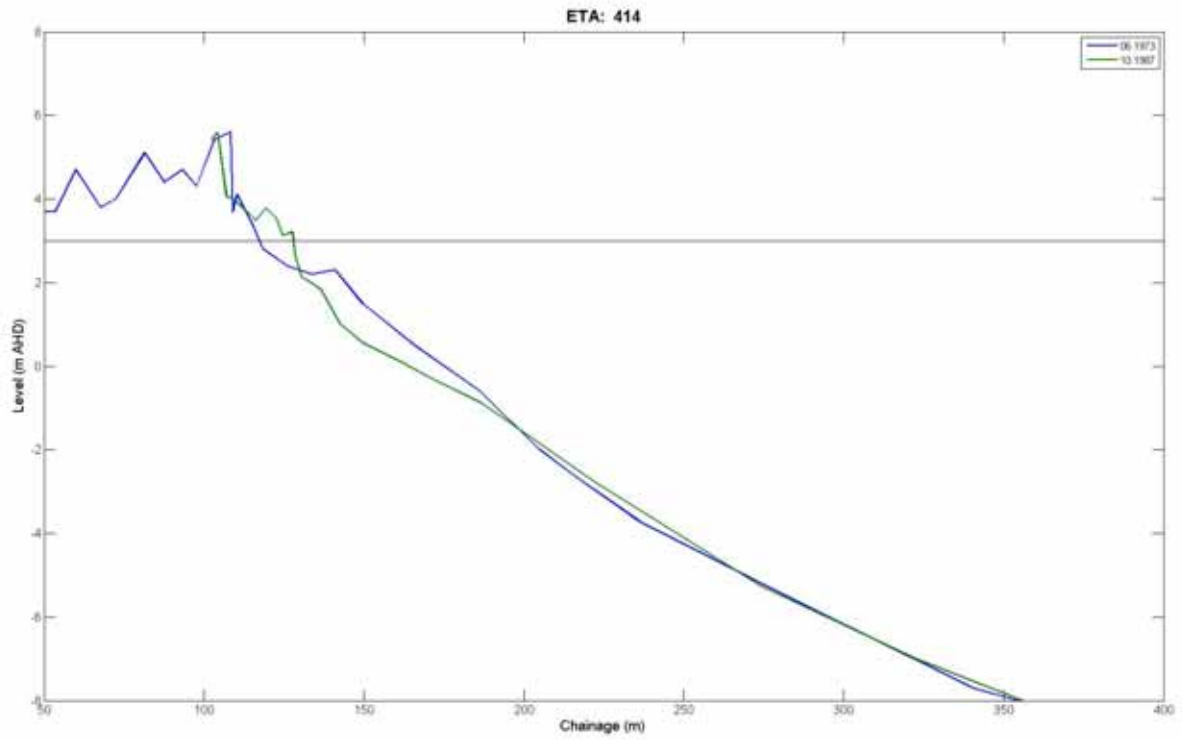


Location of ETA Survey Lines











**BMT WBM Brisbane**      Level 11, 490 Upper Edward Street Brisbane 4000  
PO Box 203 Spring Hill QLD 4004  
Tel +61 7 3831 6744 Fax +61 7 3832 3627  
Email [wbm@wbmpl.com.au](mailto:wbm@wbmpl.com.au)  
Web [www.wbmpl.com.au](http://www.wbmpl.com.au)

**BMT WBM Denver**      14 Inverness Drive East, #B132  
Englewood Denver Colorado 80112 USA  
Tel +1 303 792 9814 Fax +1 303 792 9742  
Email [wbmdenver@wbmpl.com.au](mailto:wbm-denver@wbmpl.com.au)  
Web [www.wbmpl.com.au](http://www.wbmpl.com.au)

**BMT WBM Melbourne**      Level 5, 99 King Street Melbourne 3000  
PO Box 604 Collins Street West VIC 8007  
Tel +61 3 9614 6400 Fax +61 3 9614 6966  
Email [wbmmelbourne@wbmpl.com.au](mailto:wbm-melbourne@wbmpl.com.au)  
Web [www.wbmpl.com.au](http://www.wbmpl.com.au)

**BMT WBM Morwell**      Cnr Hazelwood Drive & Miners Way Morwell 3840  
PO Box 888 Morwell VIC 3840  
Tel +61 3 5135 3400 Fax +61 3 5135 3444  
Email [wbmmorwell@wbmpl.com.au](mailto:wbm-morwell@wbmpl.com.au)  
Web [www.wbmpl.com.au](http://www.wbmpl.com.au)

**BMT WBM Newcastle**      126 Belford Street Broadmeadow 2292  
PO Box 266 Broadmeadow NSW 2292  
Tel +61 2 4940 8882 Fax +61 2 4940 8887  
Email [wbmnewcastle@wbmpl.com.au](mailto:wbm-newcastle@wbmpl.com.au)  
Web [www.wbmpl.com.au](http://www.wbmpl.com.au)

**BMT WBM Perth**      1 Brodie Hall Drive Technology Park Bentley 6102  
Tel +61 8 9328 2029 Fax +61 8 9486 7588  
Email [wbmperth@wbmpl.com.au](mailto:wbm-perth@wbmpl.com.au)  
Web [www.wbmpl.com.au](http://www.wbmpl.com.au)

**BMT WBM Sydney**      Suite 206, 118 Great North Road Five Dock 2046  
PO Box 129 Five Dock NSW 2046  
Tel +61 2 9713 4836 Fax +61 2 9713 4890  
Email [wbmsydney@wbmpl.com.au](mailto:wbm-sydney@wbmpl.com.au)  
Web [www.wbmpl.com.au](http://www.wbmpl.com.au)

**BMT WBM Vancouver**      1190 Melville Street #700 Vancouver  
British Columbia V6E 3W1 Canada  
Tel +1 604 683 5777 Fax +1 604 608 3232  
Email [wbmvancouver@wbmpl.com.au](mailto:wbm-vancouver@wbmpl.com.au)  
Web [www.wbmpl.com.au](http://www.wbmpl.com.au)