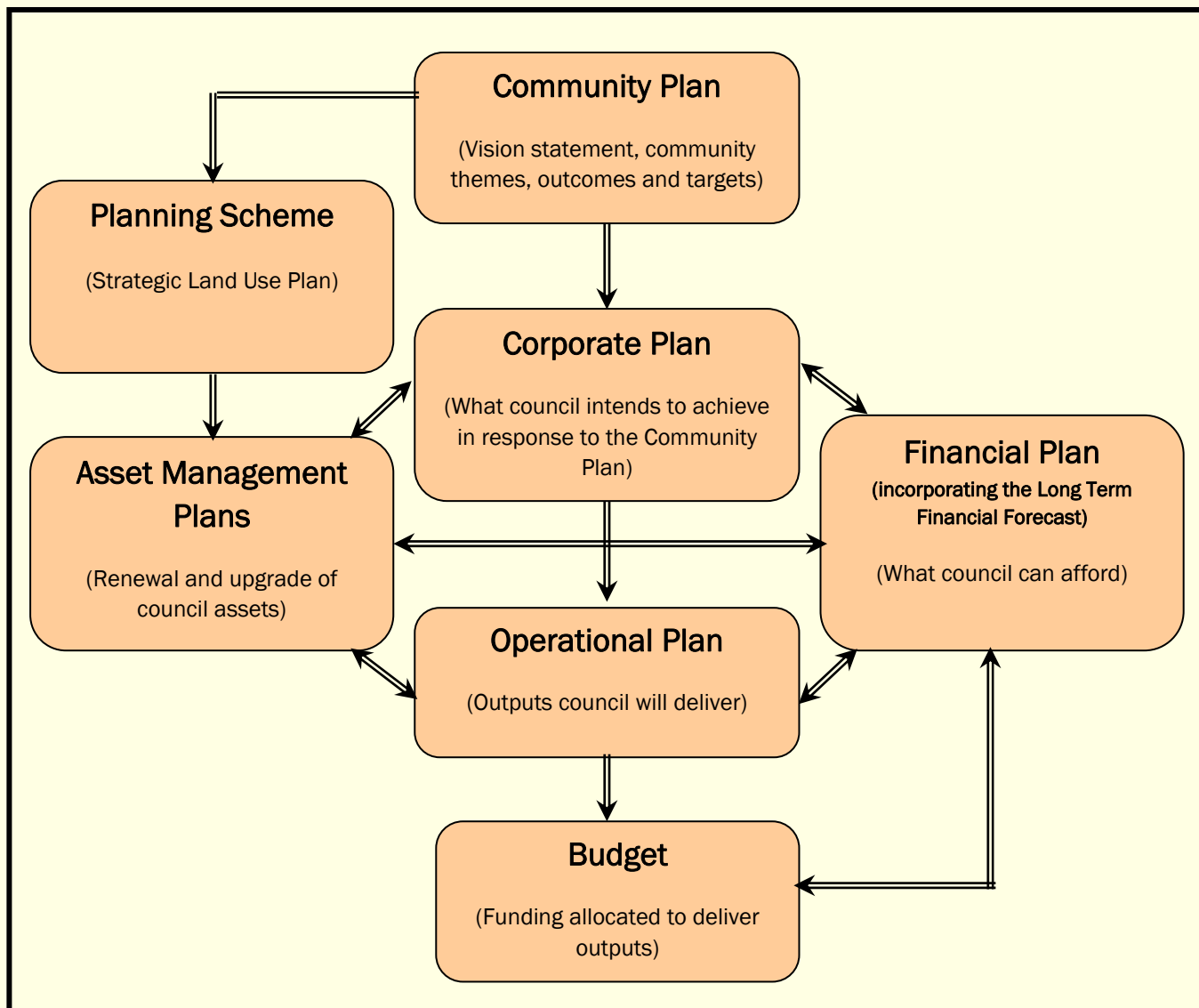


Legislation

Section 125 of the *Local Government (Finance, Plans and Reporting) Regulation 2010* requires that council considers the impact of the long-term community plan on its long-term financial forecast, financial plan, and long-term asset management plan.

Moreton Bay Regional Council has developed an Integrated Corporate Reporting Structure that incorporates the elements in the diagram below.



The Community Plan is the foundation of council's Integrated Corporate Reporting Structure. Council adoption of the *Our Tomorrow: Community Plan 2021* will trigger a review of these corporate documents.

All elements of Moreton Bay Regional Council's Integrated Corporate Reporting Structure will continue to be reviewed over time to ensure there are clear linkages between these corporate documents and the *Our Tomorrow: Community Plan 2021*.

Section 127 (1) of the *Local Government (Finance, Plans and Reporting) Regulation 2010* outlines the following requirements for the contents of a long-term community plan:

(1) The long-term community plan must state –

- (a) how the local government engaged with the community in preparing the plan and the extent to which the engagement was consistent with the local government’s community engagement policy; and
- (b) how the local government has considered and incorporated local and regional issues that affect, or may in the future affect, the local government area, including issues relating to the following –
 - (i) economic development;
 - (ii) environmental management;
 - (iii) governance;
 - (iv) social wellbeing.

Examples -

- art and culture development
- cultural and linguistic diversity
- housing
- population change
- community health

The consultation activities (community survey and public consultation forums) were conducted in accordance with Moreton Bay Regional Council’s Community Engagement Policy (Policy No: 38-2150-010) and Directive (Policy Directive No: 38-2180-006). The community survey was conducted as part of the community input phase and the results informed the identification and prioritisation of planning themes for the community plan. The public consultation forums were conducted as part of the community validation phase. These forums provided an opportunity for the community to engage with council in relation to the draft community plan (including the vision for the region and planning themes).

The following table summarises the local and regional issues that were considered as part of the community plan project. These local and regional issues were identified and researched during the intelligence gathering phase, formed part of the community survey and informed the development of the vision and planning themes for the community plan.

Categories	Local and Regional Issues
Economic development	Local job opportunities Strong local business Availability of high speed internet
Environmental management	Low levels of pollution and greenhouse gas emissions A healthy natural environment A reduction in the amount of waste going into the environment
Governance	High quality local government decision making and service delivery Effective planning by governments for population growth
Social wellbeing	High quality roads and limited traffic congestion Easy access to health services Easy access to cultural activities and events Affordable and diverse housing choices Safe neighbourhoods Easy access to parks, sport and recreation activities Easy access to libraries and other community facilities Being able to get where you want to go easily using public transport Active volunteer groups supporting the community Easy access to schools and higher education A strong sense of community pride Easy access to community support services (eg. Counselling services)

Acknowledgements

Council would like to acknowledge the following state agencies that participated in the development of this community plan.

- Department of Environment and Resource Management
- Department of Transport and Main Roads
- Department of Education and Training
- Department of Employment, Economic Development and Innovation
- Department of Communities
- Department of Local Government and Planning
- Queensland Police
- Queensland Health

Council would also like to acknowledge the contribution of Regional Development Australia Moreton Bay.



Moreton Bay Regional Council PO Box 159 CABOOLTURE QLD 4510

T. (07) 3205 0555 F. (07) 3205 0599 E. mbrc@moretonbay.qld.gov.au
www.moretonbay.qld.gov.au

