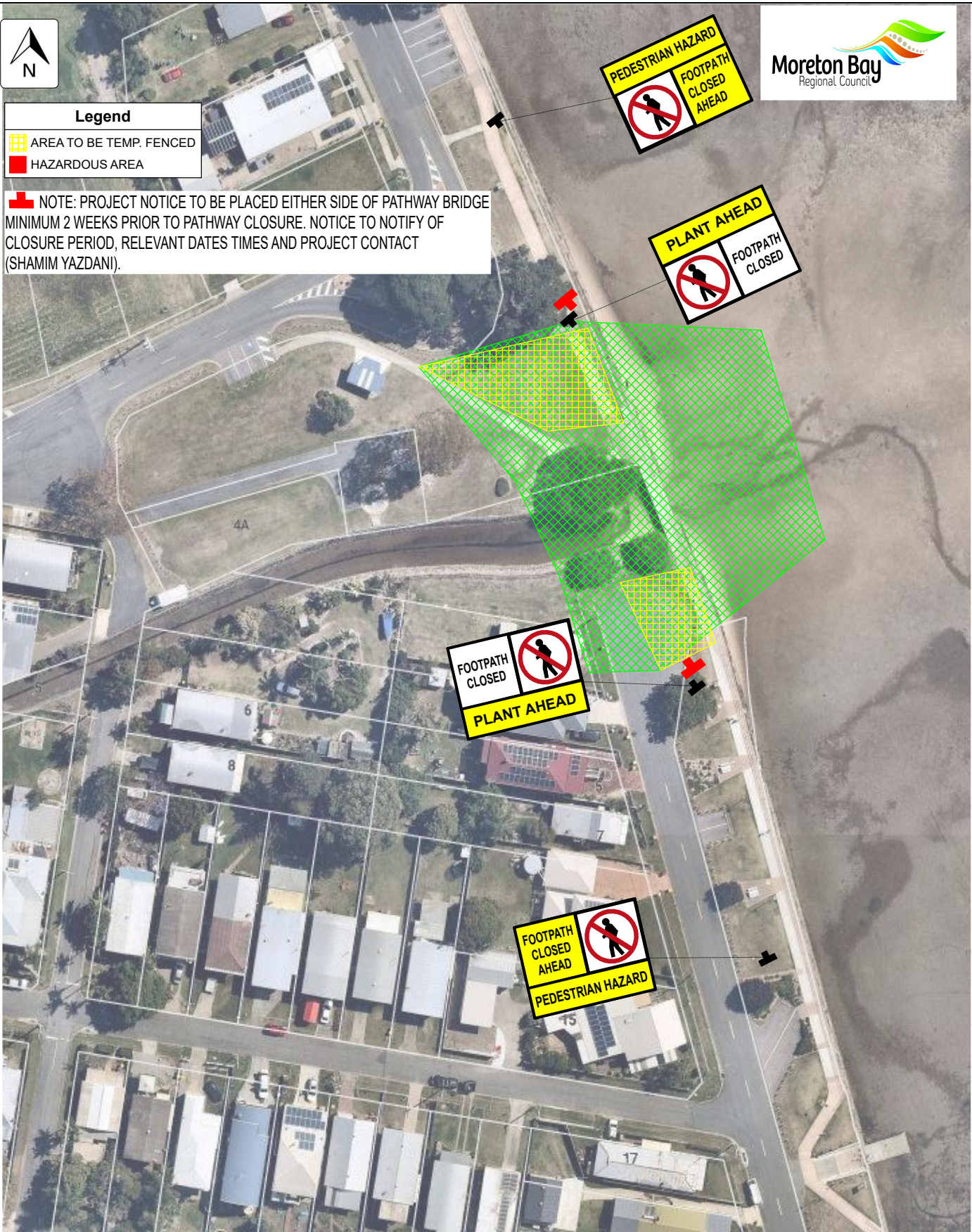




Legend	
	AREA TO BE TEMP. FENCED
	HAZARDOUS AREA

NOTE: PROJECT NOTICE TO BE PLACED EITHER SIDE OF PATHWAY BRIDGE MINIMUM 2 WEEKS PRIOR TO PATHWAY CLOSURE. NOTICE TO NOTIFY OF CLOSURE PERIOD, RELEVANT DATES TIMES AND PROJECT CONTACT (SHAMIM YAZDANI).



Project Number:	108931	Term:	3 Weeks
Project Location:	GEOBAG PLACEMENT - DECEPTION BAY	Road Type:	PATHWAY
M.U.T.C.D. Diagram:	108931 TGS 001 (PEDESTRIAN CARE)	Posted Speed:	-
Site Contact Details:	PETER BARNES - 0448 845 006	Travelled Path:	AROUND Works
Scale:	<b>BEST PRINTED ON A3 &amp; IN COLOUR</b>	Operation:	PATHWAY CLOSURE

REV	Date	Drawn By:	Approved By:	Lic No.	Signed:
0	25/03/21	TH	DQ	OP340	
1					
2					
3					