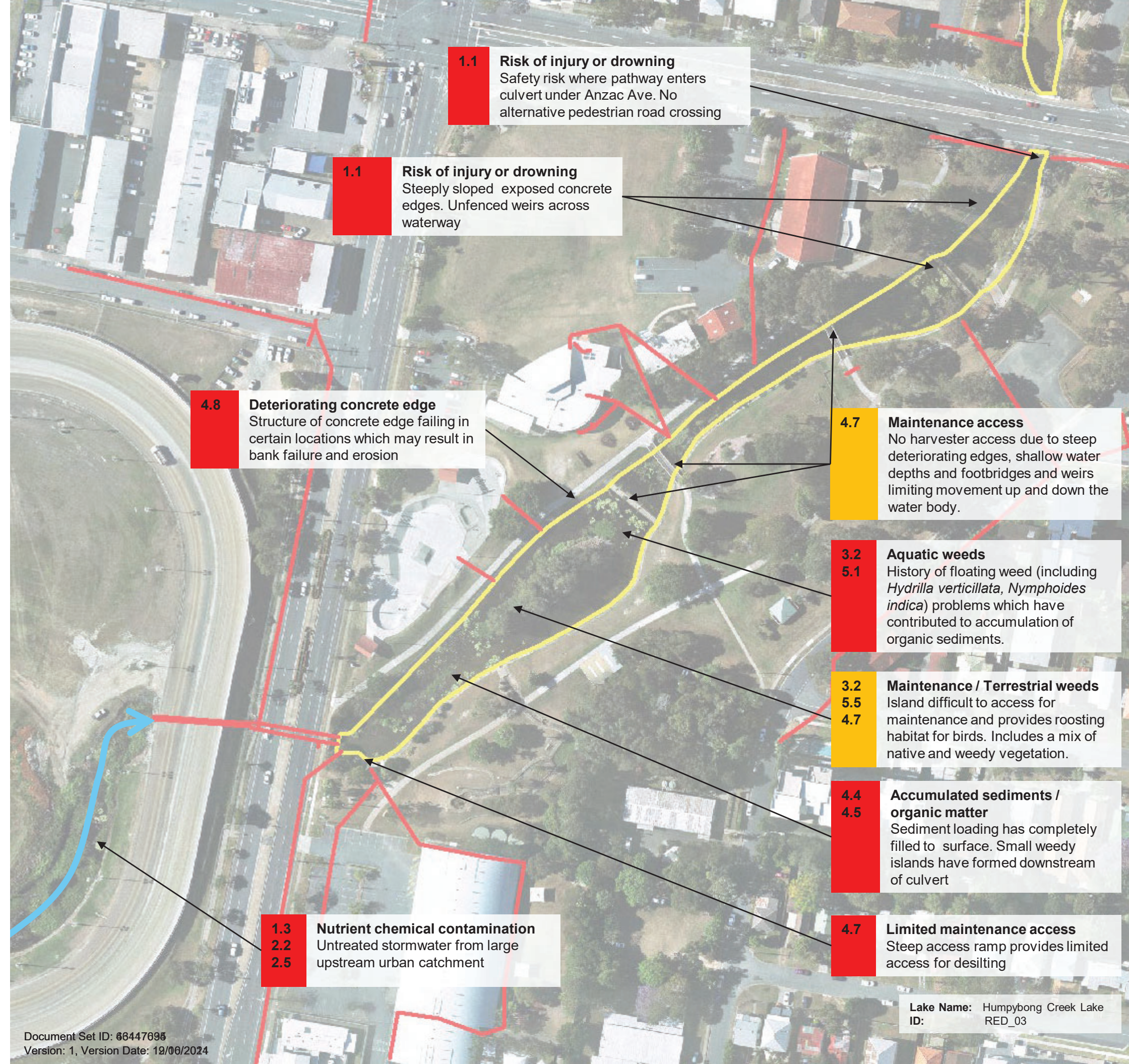



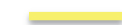


**FIGURE 3-2:**  
**Management Issues for**  
**Humpybong Creek RED\_03**  
**Lake**



**LEGEND**

-  High Priority Management Issue
-  Medium Priority Management Issue
-  Stormwater pipe
-  Lake edge

**Notes:**

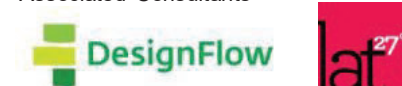
- High and very high risk management issues shown only along with other relevant information
- Consultation with relevant stakeholders within Council was undertaken as part of definite lake management issues including, Engineering Services, Asset Management, Environmental Health and with local landholders and neighbours.
- Detailed survey through the terrestrial zones and below water was undertaken as part of the lake assessment.
- The lake was inspected on a number of occasions during different seasons and climate conditions.

Moreton Bay Regional Council, Caboolture Office  
PO Box 159 (2 Hasking Street), Caboolture QLD  
4510

Ph: (07) 5433 3000, Fax: (07) 3205 0599  
Email: [mbrc@moretonbay.qld.gov.au](mailto:mbrc@moretonbay.qld.gov.au)  
Web: [www.moretonbay.qld.gov.au](http://www.moretonbay.qld.gov.au)

Compiled by: Andrew Cook Date: June 2014

Associated Consultants



Copyright Moreton Bay Regional Council and Department of Environment and Resource Management. Moreton Bay Regional Council supplies this map under the following conditions:- Mapping details are supplied from information contained in the Council's records which may have been furnished to the Council by other persons. Moreton Bay Regional Council gives no warranty or guarantee of any kind, expressed, implied, or statutory, to the correctness or accuracy of the map details or the degree of compliance with any Council standards in this matter. Persons making decisions with financial or legal implications must not rely upon the map details shown on this plan for the purpose of determining whether any particular facts or circumstances exist and the Moreton Bay Regional Council (and its officers and agents) expressly disclaim responsibility for any loss or damage suffered as a result of placing reliance upon this information.

**Lake Name:** Humpybong Creek Lake  
**ID:** RED\_03