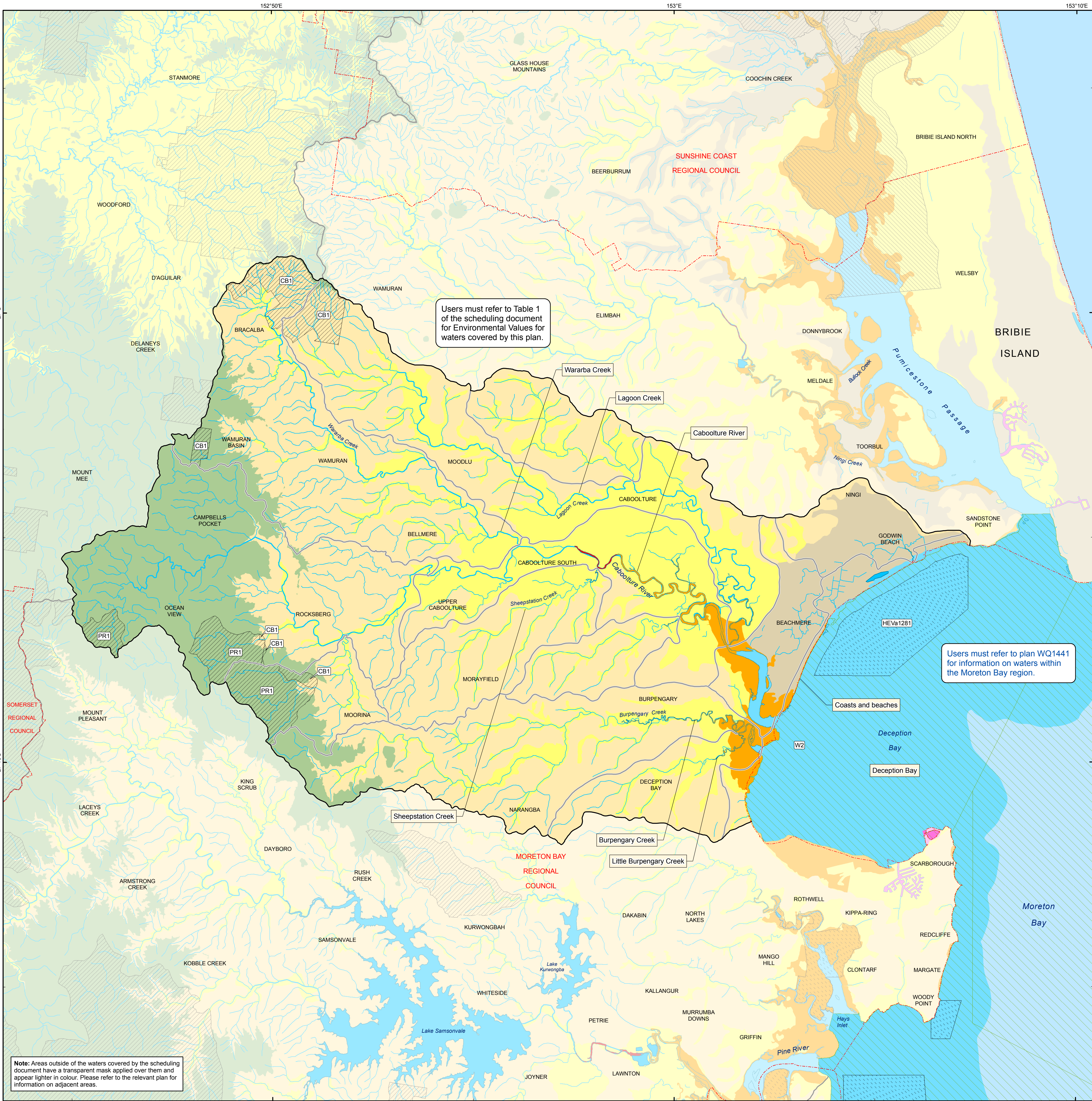


CABOOLTURE RIVER, INCLUDING ALL TRIBUTARIES OF THE RIVER
Part of Basin 142



Key to Environmental Values

Aquatic Ecosystems
Irrigation
Farm Supply
Stock Water
Aquaculture
Human Consumer

Primary Recreation
Secondary Recreation
Visual Recreation
Drinking Water
Industrial Use
Cultural & Spiritual Values

Legend

Water Types

Marine / estuarine waters

- Open coastal waters
- Enclosed coastal / lower estuary
- Middle estuary
- Upper estuary
- Tidal canals / constructed estuaries / marinas / boat harbours

Freshwaters

- Lowland freshwaters
- Wallum / tannin freshwaters
- Coastal freshwaters
- Upland freshwaters
- Lakes / reservoirs

Management Intent for Waters

- High ecological value freshwaters (maintain)
- High ecological value marine / estuarine waters (maintain)
- High ecological value marine / estuarine waters (achieve)
- Moreton Bay sub-zones

Note for users: Areas of the catchment that are not shown on this map as having a management intent of high ecological values, slightly disturbed or highly disturbed, have a management intent of moderately disturbed.

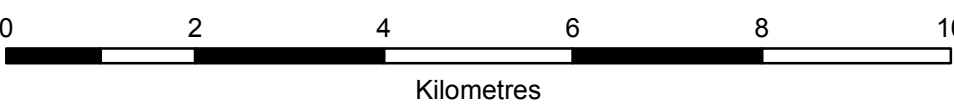
Environmental Protection (Water) Policy 2009
South-east Queensland Map Series
PLAN WQ1422

Publication date: July 2010

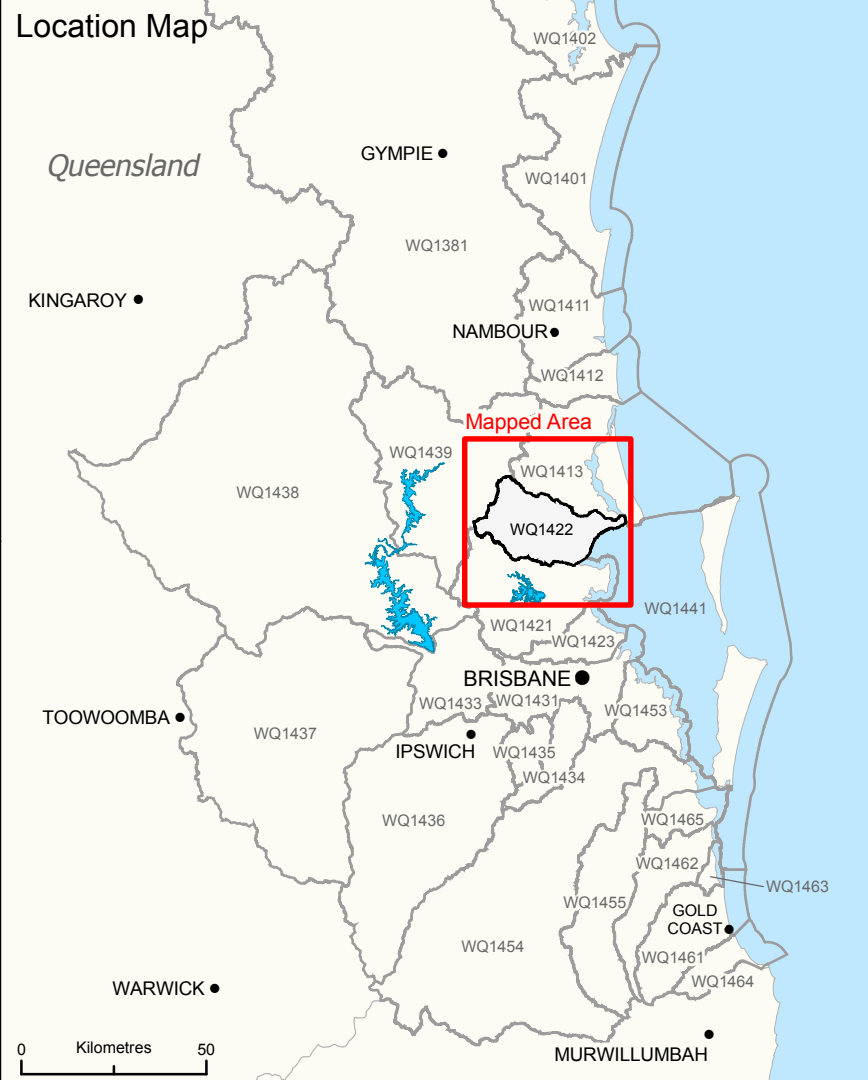
This plan forms part of the Caboolture River Environmental Values and Water Quality Objectives scheduling document, prepared pursuant to the *Environmental Protection (Water) Policy 2009*.



Projection: Map Grid of Australia (MGA) Zone 56
Horizontal Datum: Geocentric Datum of Australia 1994 (GDA94)



Scale of 1:80,000 when printed @ A1



Disclaimer

Whilst every care is taken to ensure the accuracy of this product, the Department of Environment and Resource Management makes no representations or warranties about its accuracy, reliability, completeness or suitability for any particular purpose and disclaims all responsibility and all liability (including without limitation, liability in negligence) for all expenses, losses, damages (including indirect or consequential damages) and costs which you may incur as a result of the product being inaccurate or incomplete in any way and for any reason.

Includes GEODATA product © Commonwealth of Australia (Geoscience Australia) 2010.

© The State of Queensland (Department of Environment and Resource Management) 2010