

Species List for Regional Ecosystem 12.12.2

Blackbutt (*Eucalyptus pilularis*) tall open-forest with shrubby understorey

Description: *Eucalyptus pilularis* tall open-forest with shrubby understorey. Other canopy species include *Syncarpia verecunda*, *Angophora woodsiana*, *Eucalyptus microcorys*, *E. resinifera*, *E. tindaliae*, *E. propinqua* and *E. saligna*. Occurs on Mesozoic to Proterozoic igneous rocks.

Representative areas in the MBRC: Beerburrum FR 1, Beerburrum West SF, Bellthorpe Environ Park, Bellthorpe FR 1, Bellthorpe FR 2, Bellthorpe SF, Coolabah CI Park, Curran St Park, D'Aguiar NP, Monaro Dr Park, Mount Mee SF, Raaen Rd Park, Ryan Gully Park.

Conservation status: *Vegetation Management Act (Qld) 1999* - not of concern (58.59 % remaining locally)

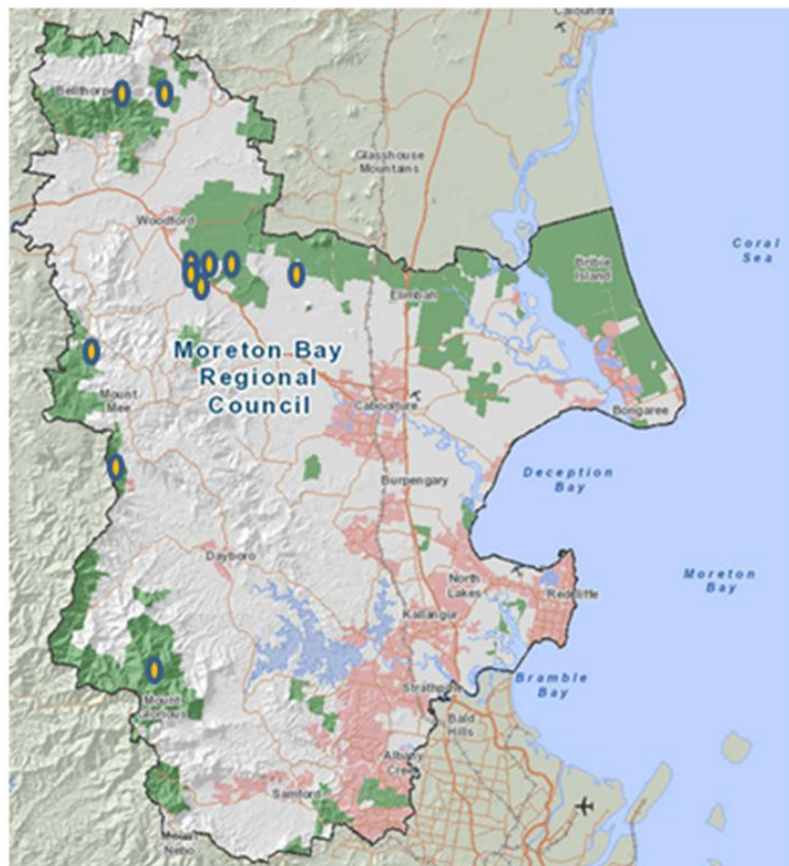


Figure 1: Representative areas in the MBRC where RE 12.12.2 can be found

Scientific Name	Common Name	Description
Grasses		
<i>Entolasia stricta</i>	Wiry Panic	
<i>Imperata cylindrica</i>	Blady Grass	
<i>Themeda triandra</i>	Kangaroo Grass	
Herbs		
<i>Centella asiatica</i>	Pennywort	
<i>Goodenia rotundifolia</i>	Star Goodenia	
<i>Lobelia purpurascens</i>	White Root	
<i>Lomandra filiformis</i>	Fine-leaf Mat Rush	
Sedges		
<i>Lepidosperma laterale</i>	Variable Swordsedge	
Shrubs		
<i>Acacia irrorata</i>	Green Wattle/Blue Skin	
<i>Banksia spinulosa subsp. collina</i>	Golden Candelsticks	
<i>Breynia oblongifolia</i>	Coffee Brush	
<i>Hovea acutifolia</i>	Pointed-leaf Hovea	
<i>Leptospermum polygalifolium</i>	Wild May	
<i>Macrozamia lucida</i>	Pineapple Zamia	
<i>Persoonia cornifolia</i>	Broad-leafed Geebung	
<i>Zieria minutiflora</i>	Twiggy Zieria	
Tall Shrubs		
<i>Banksia integrifolia</i>	Coast Banksia	
<i>Denhamia pittosporoides</i>	Orange Boxwood	
<i>Hibiscus heterophyllus</i>	Native Rosella	
<i>Melaleuca salicina</i>	Willow Bottlebrush/Pink Tips	
<i>Trochocarpa laurina</i>	Tree Heath/Waddywood	
Terrestrial Ferns		
<i>Blechnum cartilagineum</i>	Gristle Fern	
<i>Calochlaena dubia</i>	False Bracken	
<i>Hypolepis muelleri</i>	Harsh Ground Fern	
<i>Pteridium esculentum</i>	Common Bracken	

<i>Sticherus flabellatus</i>	Umbrella Fern	
Trees		
<i>Acacia melanoxylon</i>	Blackwood	
<i>Angophora woodsiana</i>	Rough-barked Apple Smudgee	Koala habitat tree
<i>Eucalyptus microcorys</i>	Tallowwood	Preferred Koala food tree 
<i>Eucalyptus pilularis</i>	Blackbutt	Koala habitat tree
<i>Eucalyptus propinqua</i>	Grey Gum	Preferred Koala food tree 
<i>Eucalyptus resinifera</i>	Red Mahogany	Preferred Koala food tree 
<i>Eucalyptus saligna</i>	Sydney Blue Gum	Koala habitat tree
<i>Eucalyptus tindaliae</i>	Tindale's Stringybark	Koala habitat tree
<i>Glochidion ferdinandi</i>	Cheese Tree	
<i>Guioa semiglauca</i>	Wild Quince	
<i>Lophostemon confertus</i>	Brush Box	Koala habitat tree
<i>Syncarpia glomulifera</i>	Turpentine	
<i>Syncarpia verecunda</i>		
Vines		
<i>Billardiera scandens</i>	Sweet Apple Berry	
<i>Cissus hypoglauca</i>	Five-leaf Water Vine	
<i>Hibbertia dentata</i>	Toothed Guinea Flower	
<i>Kennedia rubicunda</i>	Dusky Coral Pea	

This data is supplied by the Community & Environmental Services Division on the following conditions:-

Data is supplied from information contained in the Council's records which may have been furnished to the Council by other persons. Moreton Bay Regional Council gives no warranty or guarantee of any kind, expressed, implied, or statutory, to the correctness or accuracy of the data or the degree of compliance with any Council standards in this matter. Persons making decisions of any kind, including with financial or legal implications, must not rely upon the data for the purposes of determining whether any particular facts or circumstances exist and the Moreton Bay Regional Council (and its officers and agents) expressly disclaim responsibility for any loss or damage suffered as a result of placing reliance upon this data. Persons should satisfy themselves as to the accuracy and completeness of this information, and are encouraged to access other sources, such as the Department of Natural Resources and Mine's database or Wildlife Online, to obtain information that may not be available to Council.