

## Species List for Regional Ecosystem 12.1.3

### Mangroves

**Description:** Mangrove shrubland to low closed forest. Occurs on Quaternary estuarine deposits.

**Ecological values:** Habitat for water mouse (*Xeromys myoides*) in southern part of the bioregion particularly in areas immediately adjacent to salt pans, 12.1.2. ( Van Dyck & Gynther, 1996, 2003).

**Representative areas in the MBRC:** Acacia Park, Bayside Dr Lake, Beachmere Boat Ramp, Beachmere CP, Beerburrum East SF, Bribie Island NP, Bribie Island Rd Park, Bribie Pines Res, Bullock Ck CP, Duffield Rd Park, Elizabeth Rd Res, Grahams Rd Environ Res, H E Corbould Park, Hays Inlet CP 1, Hays Inlet CP 2, Heritage Village Res, Korman Rd Park, Macdonnell Rd Cons Res, Moreton Terrace Park, Ningi Ck CP, O'Leary Avenue Park, Salt Water Ck Bridge Res, Saltwater Ck Res 2, Sandstone Point Foreshore, Tacoma Park, Toorbul Community & Sports Ctr, Turners Camp, Uhlman

**Conservation status-** *Vegetation Management Act (Qld) 1999*- not of concern (93.65 % remaining locally)

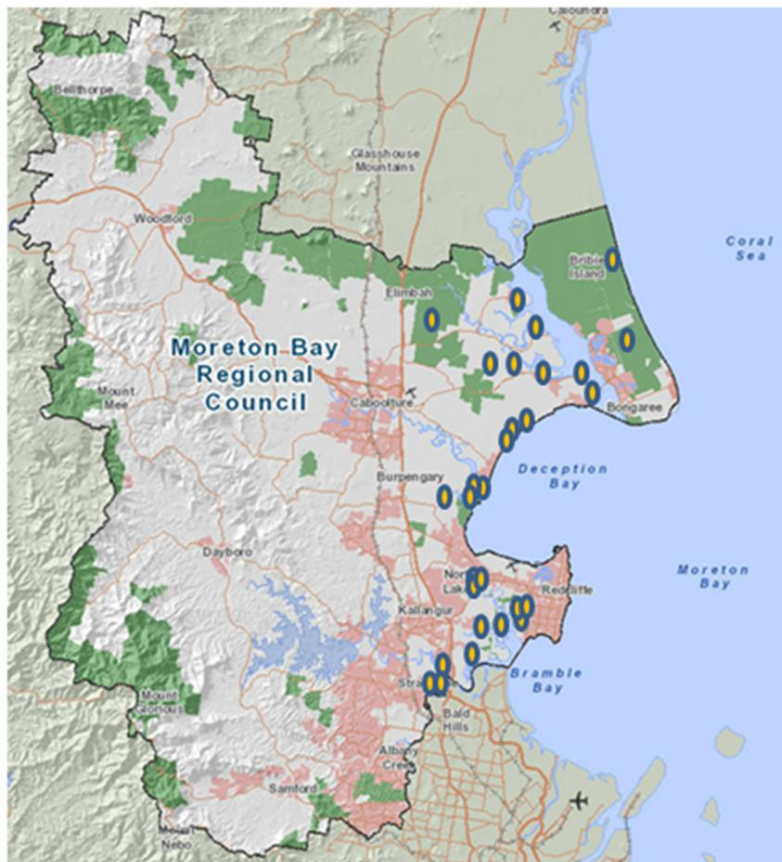


Figure 1: Representative areas in the MBRC where RE 12.1.3 can be found.

Scientific Name	Common Name
<b>Grasses</b>	
<i>Sporobolus virginicus</i>	Sand Couch/Marine Couch
<b>Herbs</b>	
<i>Sesuvium portulacastrum</i>	Sea Purslane
<b>Sedges</b>	
<i>Cyperus polystachyos</i>	Bunchy Sedge
<i>Fimbristylis ferruginea</i>	A Fringe Rush
<i>Fimbristylis polytrichoides</i>	Rusty Sedge
<b>Shrubs</b>	
<i>Lumnitzera racemosa</i>	Black Mangrove
<i>Suaeda australis</i>	Seablite
<b>Tall Shrubs</b>	
<i>Aegiceras corniculatum</i>	River Mangrove
<i>Bruguiera gymnorhiza</i>	Orange Mangrove
<i>Ceriops tagal</i>	Yellow Mangrove
<i>Rhizophora stylosa</i>	Spotted Mangrove
<i>Allocasuarina glauca</i>	Swamp She-Oak
<i>Avicennia marina subsp. australasica</i>	Grey (White) Mangrove
<i>Casuarina cunninghamiana</i>	River Oak
<i>Casuarina equisetifolia</i>	Coast She Oak
<i>Excoecaria agallocha</i>	Milky Mangrove

This data is supplied by the Community & Environmental Services Division on the following conditions:-

Data is supplied from information contained in the Council's records which may have been furnished to the Council by other persons. Moreton Bay Regional Council gives no warranty or guarantee of any kind, expressed, implied, or statutory, to the correctness or accuracy of the data or the degree of compliance with any Council standards in this matter. Persons making decisions of any kind, including with financial or legal implications, must not rely upon the data for the purposes of determining whether any particular facts or circumstances exist and the Moreton Bay Regional Council (and its officers and agents) expressly disclaim responsibility for any loss or damage suffered as a result of placing reliance upon this data. Persons should satisfy themselves as to the accuracy and completeness of this information, and are encouraged to access other sources, such as the Department of Natural Resources and Mine's database or Wildlife Online, to obtain information that may not be available to Council.