

## Species List for Regional Ecosystem 12.12.23

### Open-forest to woodland, generally with Blue Gum (*Eucalyptus tereticornis*)

**Description:** Open-forest to woodland generally with *Eucalyptus tereticornis* ± *E. eugenioides*. Other species present, vary from place to place but commonly include *Corymbia intermedia*, *Eucalyptus acmenoides* ± *E. biturbinata*, *E. longirostrata*, *E. melliodora*, *Corymbia trachyphloia*, *Lophostemon confertus* (tree form and whipstick form), *Angophora subvelutina*, *E. crebra* and *Allocasuarina torulosa*. Occurs at higher altitudes on granite hills

**Representative areas in the MBRC:** D'Aguilar NP, Dawson Ck Rd Park 1, Hulcombe Rd Park 2, Mount Nebo Rd Park 2, View St Park

**Conservation status:** *Vegetation Management Act (Qld) 1999* - not of concern (45.99 % remaining locally)

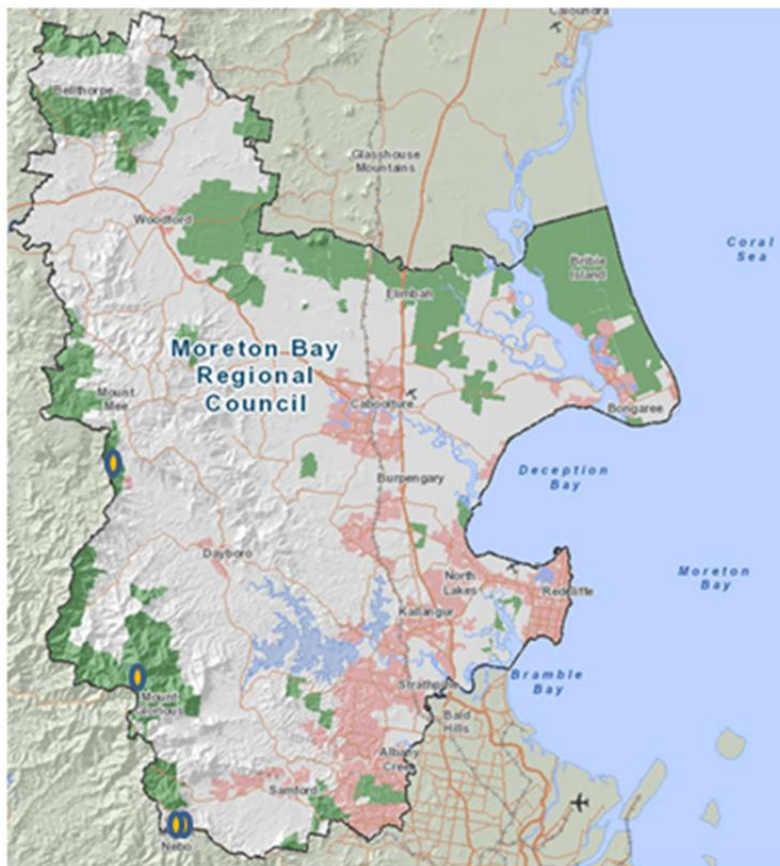


Figure 1: Representative areas in the MBRC where RE 12.12.23 can be found

Scientific Name	Common Name	Description
<b>Epiphytic Ferns</b>		
<i>Drynaria rigidula</i>	Basket Fern	
<b>Epiphytic Orchids</b>		
<i>Cymbidium canaliculatum</i>	Black Cymbidium	
<b>Grasses</b>		
<i>Cymbopogon refractus</i>	Barb Wire Grass	
<i>Entolasia stricta</i>	Wiry Panic	
<i>Imperata cylindrica</i>	Blady Grass	
<i>Themeda triandra</i>	Kangaroo Grass	
<b>Herbs</b>		
<i>Crotalaria linifolia</i>	A Rattlepod	
<i>Desmodium rhytidophyllum</i>	A Tick Trefoil	
<i>Lomandra longifolia</i>	Long-leaved Mat Rush	
<b>Shrubs</b>		
<i>Acacia falcata</i>	Sickle-leaved Wattle	
<i>Acrotriche aggregata</i>	Ground Berry	
<i>Alchornea ilicifolia</i>	Native Holly	
<i>Breynia oblongifolia</i>	Coffee Brush	
<i>Bursaria spinosa</i>	Blackthorn	
<i>Carissa ovata</i>	Currant Bush	
<i>Jacksonia scoparia</i>	Dogwood/Native Broom	
<i>Pimelea linifolia</i>	Slender Rice Flower	
<i>Wikstroemia indica</i>	Tie Bush	
<b>Tall Shrubs</b>		
<i>Acacia leiocalyx</i>	Early Black Wattle	
<i>Banksia integrifolia</i>	Coast Banksia	
<i>Hibiscus heterophyllus</i>	Native Rosella	
<i>Macaranga tanarius</i>	Macaranga	

<i>Mallotus claoxyloides</i>	Scrub Odour Bush	
<i>Melaleuca salicina</i>	Willow Bottlebrush/Pink Tips	Koala habitat tree
<i>Melaleuca viminalis</i>	Weeping Bottlebrush	Koala habitat tree
<i>Notelaea longifolia</i>	Large Mock Olive	
<i>Psyrax odorata</i>	Native Coffee	
<i>Trema tomentosa</i>	Peach Leaf/Wild Peach	
<b>Terrestrial Ferns</b>		
<i>Adiantum hispidulum</i>	Rough Maidenhair	
<b>Trees</b>		
<i>Acacia disparrima</i>		
<i>Acacia maidenii</i>	Maiden's Wattle	
<i>Acacia melanoxylon</i>	Blackwood	
<i>Allocasuarina littoralis</i>	Black She Oak	
<i>Allocasuarina torulosa</i>	Forest She Oak	
<i>Alphitonia excelsa</i>	Soap Tree/Red Ash	
<i>Angophora leiocarpa</i>	Rusty Apple	Koala habitat tree
<i>Angophora subvelutina</i>	Broadleaved Apple	Koala habitat tree
<i>Aphananthe philippinensis</i>	Native Elm/Axe Handle Tree	
<i>Araucaria cunninghamii</i>	Hoop Pine	
<i>Corymbia intermedia</i>	Pink Bloodwood	Koala habitat tree
<i>Corymbia trachyphloia</i>	Brown Bloodwood	Koala habitat tree
<i>Cupaniopsis parvifolia</i>	Small-leaved Tuckeroo	Koala habitat tree
<i>Elaeocarpus obovatus</i>	Brown Quandong	
<i>Eucalyptus acmenoides</i>	White Mahogany	Koala habitat tree
<i>Eucalyptus biturbinata</i>	Grey Gum	Koala habitat tree
<i>Eucalyptus crebra</i>	Narrow-leaved Ironbark	Koala habitat tree
<i>Eucalyptus eugenioides</i>	Thin Leaved Stringybark	Koala habitat tree
<i>Eucalyptus longirostrata</i>	Grey Gum	Koala habitat tree
<i>Eucalyptus melliodora</i>	Yellow Box	Koala habitat tree

<i>Eucalyptus tereticornis</i>	Queensland Blue Gum	Preferred Koala food tree 
<i>Ficus fraseri</i>	Sandpaper Fig	
<i>Ficus macrophylla</i>	Morteon Bay Fig	
<i>Flindersia australis</i>	Crows Ash	
<i>Glochidion ferdinandi</i>	Cheese Tree	
<i>Grevillea robusta</i>	Silky Oak	
<i>Guioa semiglauca</i>	Wild Quince	
<i>Jagera pseudorhus</i>	Foam Bark	
<i>Lophostemon confertus</i>	Brush Box	Koala habitat tree
<i>Mallotus philippensis</i>	Red Kamala	
<i>Melaleuca bracteata</i>	Black Tea Tree/River Tea Tree	Koala habitat tree
<i>Melia azedarach</i>	White Cedar	
<i>Rhodosphaera rhodanthema</i>	Deep Yellow Wood	
<i>Toechima tenax</i>	Scrub Teak	
<i>Toona ciliata</i>	Red Cedar	
<b>Vines</b>		
<i>Callerya megasperma</i>	Native Wisteria	
<i>Geitonoplesium cymosum</i>	Scrambling Lily	
<i>Pandorea pandorana</i>	Wonga Vine	
<i>Parsonsia straminea</i>	Monkey Rope	
<i>Stephania japonica</i>	Tape Vine	

This data is supplied by the Community & Environmental Services Division on the following conditions:-

Data is supplied from information contained in the Council's records which may have been furnished to the Council by other persons. Moreton Bay Regional Council gives no warranty or guarantee of any kind, expressed, implied, or statutory, to the correctness or accuracy of the data or the degree of compliance with any Council standards in this matter. Persons making decisions of any kind, including with financial or legal implications, must not rely upon the data for the purposes of determining whether any particular facts or circumstances exist and the Moreton Bay Regional Council (and its officers and agents) expressly disclaim responsibility for any loss or damage suffered as a result of placing reliance upon this data. Persons should satisfy themselves as to the accuracy and completeness of this information, and are encouraged to access other sources, such as the Department of Natural Resources and Mine's database or Wildlife Online, to obtain information that may not be available to Council.