

Species List for Regional Ecosystem 12.1.1

Swamp She Oak (*Casuarina glauca*) forest

Description: The dominant species in this ecosystem is *Casuarina glauca* (Swamp She oak). *Casuarina glauca* ± *Melaleuca quinquenervia* ± mangroves open-forest. Occurs on margins of Quaternary estuarine deposits.

Ecological values: Only 2% of the preclearing area remains. Subject to weed invasion, especially groundsel (*Baccharis halimifolia*). Provides wetland habitat values.

Representative areas in the MBRC: Antigua Cres Park, Bayside Dr Lake, Beachmere Boat Ramp, Beerburum East SF, Bullock Ck CP, Dohles Rocks Rd Park, Duffield Rd Park, Elizabeth Rd Res, Hays Inlet CP 1, Macdonnell Rd Cons Res, Morris Park, Ningi Ck CP, Old Beachmere Rd Park (Beachmere), Toorbul Community & Sports Ctr, Turners Camp, Uhlmann Rd

Conservation status- *Vegetation Management Act (Qld) 1999*- of concern (36.91 % remaining locally)

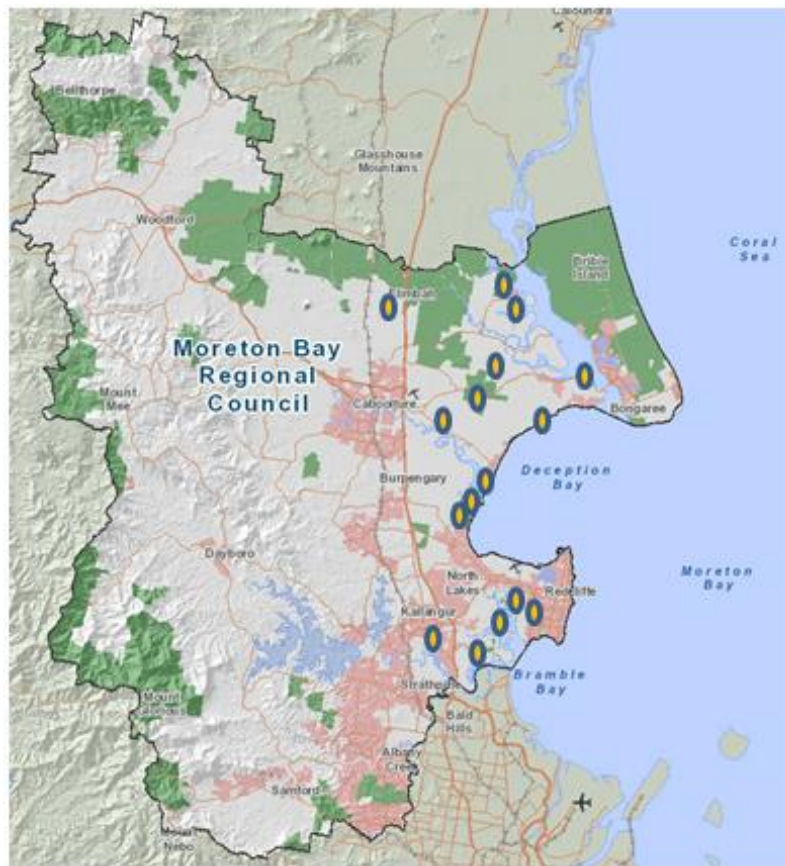


Figure 1: Representative areas in the MBRC where RE 12.1.1 can be found.

Scientific Name	Common Name	Description
Aquatic herbs		
<i>Phragmites australis</i>	Common Reed	
Grasses		
<i>Capillipedium spicigerum</i>	Scented Top	
<i>Entolasia stricta</i>	Wiry Panic	
<i>Ottochloa gracillima</i>	Shade Grass	
<i>Sporobolus virginicus</i>	Sand Couch/Marine Couch	
<i>Triglochin striatum</i>	Streaked Arrowgrass	
Herbs		
<i>Apium prostratum</i>	Sea Celery	
<i>Baumea articulata</i>	Jointed Twigrush	
<i>Centella asiatica</i>	Pennywort	
<i>Crinum pedunculatum</i>	Swamp Lily	
<i>Crotalaria linifolia</i>	A Rattlepod	
<i>Dianella brevipedunculata</i>	Blue Flax Lily	
<i>Pseuderanthemum variabile</i>	Love Flower	
<i>Triglochin procerum</i>	Water Ribbons	
<i>Sarcocornia quinqueflora</i>	Samphire	
<i>Sesuvium portulacastrum</i>	Sea Purslane	
<i>Suaeda australis</i>	Seablight	
<i>Velleia spathulata</i>	Wild Pansy	
Sedges		
<i>Cyperus polystachyos</i>	Bunchy Sedge	
<i>Fimbristylis dichotoma</i>	Common fringe-rush	
<i>Gahnia aspera</i>	Saw Sedge	
<i>Dockrillia teretifolia</i>	<i>Pencil Orchid</i>	

Shrubs		
<i>Acacia fimbriata</i>	Brisbane Golden Wattle	
<i>Clerodendrum inerme</i>	Scrambling Clerodendrum	
<i>Hibiscus diversifolius</i>	Swamp Hibiscus	
<i>Myoporum acuminatum</i>	Creeping Boobialla	
<i>Pittosporum revolutum</i>	Brisbane Laurel	
Tall Shrubs		
<i>Acacia leiocalyx</i>	Early Black Wattle	
<i>Exocarpos latifolius</i>	Scrub cherry	
<i>Hibiscus tiliaceus</i>	Cottonwood	
<i>Myrsine variabilis</i>	Muttonwood	
Terrestrial Ferns		
<i>Acrostichum speciosum</i>	Mangrove Fern	
<i>Blechnum indicum</i>	Bungwall Fern/Swamp Water Fern	
<i>Cyclosorus interruptus</i>		
<i>Hypolepis muelleri</i>	Harsh Ground Fern	
<i>Microsorium scandens</i>	Scented Climbing Fern	
Trees		
<i>Acacia maidenii</i>	Maiden's Wattle	
<i>Aegiceras corniculatum</i>	River Mangrove	
<i>Allocasuarina glauca</i>	Swamp She-Oak	
<i>Angophora leiocarpa</i>	Rusty Apple	Koala habitat tree
<i>Avicennia marina subsp. australasica</i>	Grey (White) Mangrove	
<i>Casuarina glauca</i>	Swamp She oak	
<i>Cupaniopsis anacardioides</i>	Tuckeroo	
<i>Eucalyptus tereticornis</i>	Queensland Blue Gum	Preferred koala food tree 
<i>Excoecaria agallocha</i>	Milky Mangrove	
<i>Ficus coronata</i>	Creek Sandpaper Fig	
<i>Melaleuca quinquenervia</i>	Broad Leaved Paperbark	Koala habitat tree

<i>Polyscias elegans</i>	Celerywood	
Vines		
<i>Cynanchum carnosum</i>	Mangrove Wax-Flower Vine	
<i>Geitonoplesium cymosum</i>	Scrambling Lily	
<i>Maclura cochinchinensis</i>	Cockspur Thorn	
<i>Pandorea jasminoides</i>	Bower of Beauty	
<i>Parsonsia straminea</i>	Monkey Rope	

This data is supplied by the Community & Environmental Services Division on the following conditions:-

Data is supplied from information contained in the Council's records which may have been furnished to the Council by other persons. Moreton Bay Regional Council gives no warranty or guarantee of any kind, expressed, implied, or statutory, to the correctness or accuracy of the data or the degree of compliance with any Council standards in this matter. Persons making decisions of any kind, including with financial or legal implications, must not rely upon the data for the purposes of determining whether any particular facts or circumstances exist and the Moreton Bay Regional Council (and its officers and agents) expressly disclaim responsibility for any loss or damage suffered as a result of placing reliance upon this data. Persons should satisfy themselves as to the accuracy and completeness of this information, and are encouraged to access other sources, such as the Department of Natural Resources and Mine's database or Wildlife Online, to obtain information that may not be available to Council.