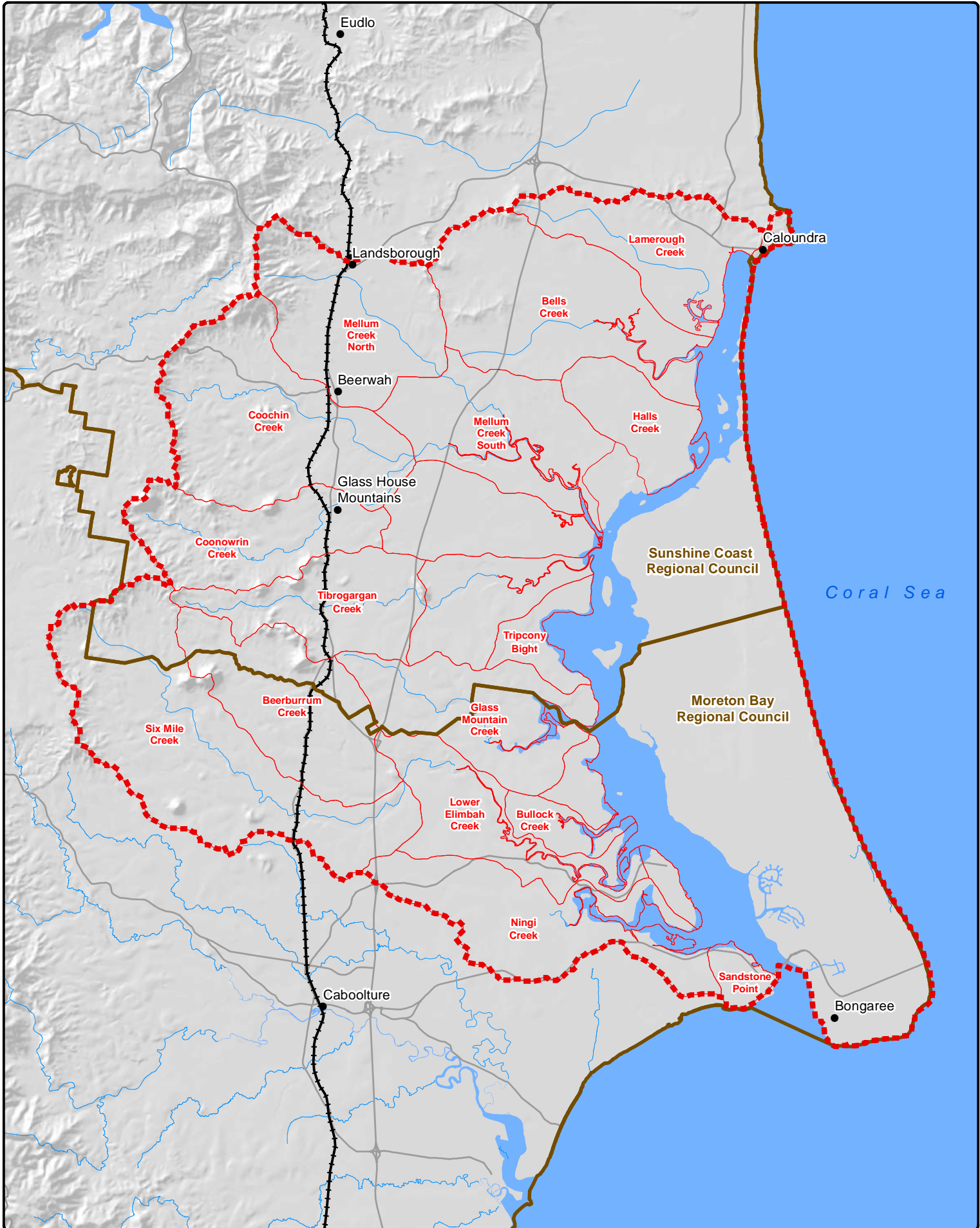
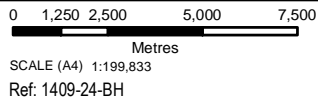


Pumicestone Passage and its catchment

26 September 2014



Geographical Information Services
 Moreton Bay Regional Council
 PO Box 159, CABOOLTURE QLD 4510
 Ph: (07) 3205 0555, Fax: (07) 3205 0599
 Email: gis@moretonbay.qld.gov.au
 Web: www.moretonbay.qld.gov.au



Legend

- Towns
- Local Government Boundary
- Pumicestone Catchment
- Sub Catchments
- Railway
- Main Roads
- Waterways
- Water Bodies

Copyright Moreton Bay Regional Council and the Queensland Government. Moreton Bay Regional Council supplies this map under the following conditions: Mapping details are supplied from information contained in the Council's records which may have been furnished to the Council by other persons. Moreton Bay Regional Council gives no warranty or guarantee of any kind, expressed, implied, or statutory, to the correctness or accuracy of the map details or the degree of compliance with any Council standards in this matter. Persons making decisions with financial or legal implications must not rely upon the map details shown on this plan for the purpose of determining whether any particular facts or circumstances exist and the Moreton Bay Regional Council (and its officers and agents) expressly disclaims responsibility for any loss or damage suffered as a result of placing reliance upon this information.

blakeharcourt

Z:\AppData\CisData\Corporate_GIS\Spatial Requests\2014\11-409-24-BH-Pumicestone_Passage\Fumicestone_Passage.mxd