

# Information sheet

## Moreton Bay Regional Council - Disaster Portal

The Disaster Portal can be found on Council's website. If there is a disaster, Council includes important information and updates the information regularly.

1. Go to the Moreton Bay Disaster Management webpage:

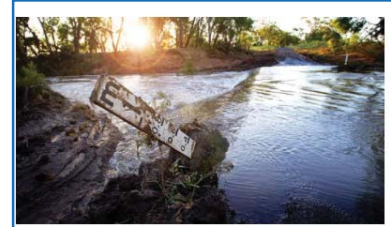
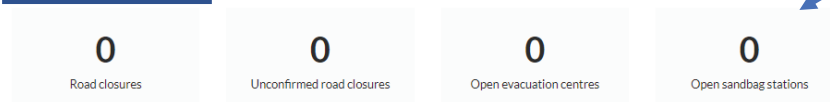
<https://www.moretonbay.qld.gov.au/Services/Disaster-Management>

2. Tap or click

3. Are there any problems now?

Disaster portal

Current conditions



Disaster portal

Current information during a disaster situation.

The portal shows the **closed** roads. It shows the **open** evacuation centres and the **open** sandbag stations.

4. Where are the problems? Type the street address in the box. Then tap or click **Search**.

### Example

Enter street address

836 Gympie Road, LAWNTON Queensland 4501

Show map options ▾

Search

There is a bushfire warning at Burpengary.

The map shows 836 Gympie Road.

### Map Symbols



The road is **closed**.



The road **may be** closed.



The evacuation centre is **open**.



The evacuation centre is **closed**.



The sandbag station is **open**.



There is a **bushfire** or bushfire **warning**.



The **blue line** shows the Moreton Bay Region.

5. **Important:** if there is a weather event or bushfire, check the disaster portal often for new information.

# Information sheet

You can find more information about roads, sandbag stations and evacuation centres. **Tap** or **click** on the [link](#) to the webpage you need.

## Other resources



### Current warnings

Links to the Bureau of Meteorology for current weather warnings issued in Queensland.



### Weather impacted roads

Current flooded or weather impacted road closures. This list is updated frequently during major weather events.



### Sandbags

Sandbags will not stop flood waters entirely. Suitably placed filled bags may reduce the amount of water entering your property.



### Evacuation centres

Seek refuge with family or friends in the first instance.



### Energex emergency outages

Search for power outages in your street or suburb.



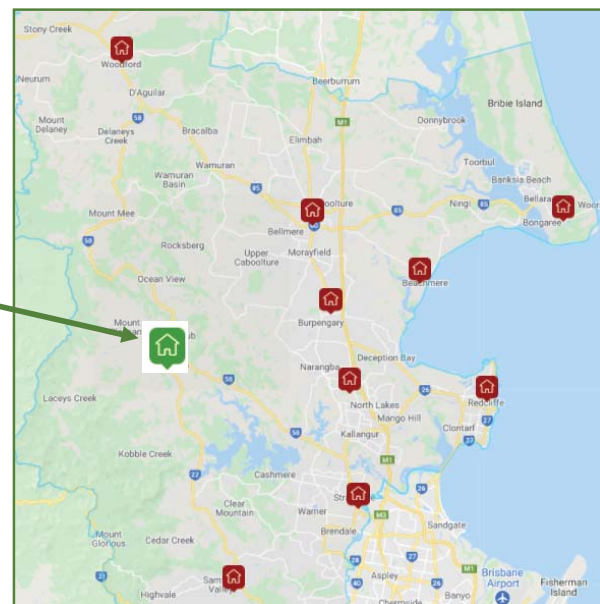
### School closures

Find the latest information on school closures from the Department of Education.

## Example: Evacuation Centres

If there is a disaster and your house is not safe **and** you cannot stay with a relative or a friend, go to a green evacuation centre.

The disaster portal also has a **list** of all the evacuation centres. The list shows the evacuation centre address and **status** (open or closed).



Suburb	Location	Address	Status
Narangba	Oakey Flat Road - Between Raynbird Road roundabout and Sovereign Drive roundabout	910 Oakey Flat Road, Narangba - <a href="#">View map</a>	Closed
Toorbul	Toorbul Community and Sports Centre	1774 Pumicestone Road Toorbul, Toorbul - <a href="#">View map</a>	Closed
Dayboro	Dayboro Depot	73 Bradley Street, Dayboro - <a href="#">View map</a>	Closed