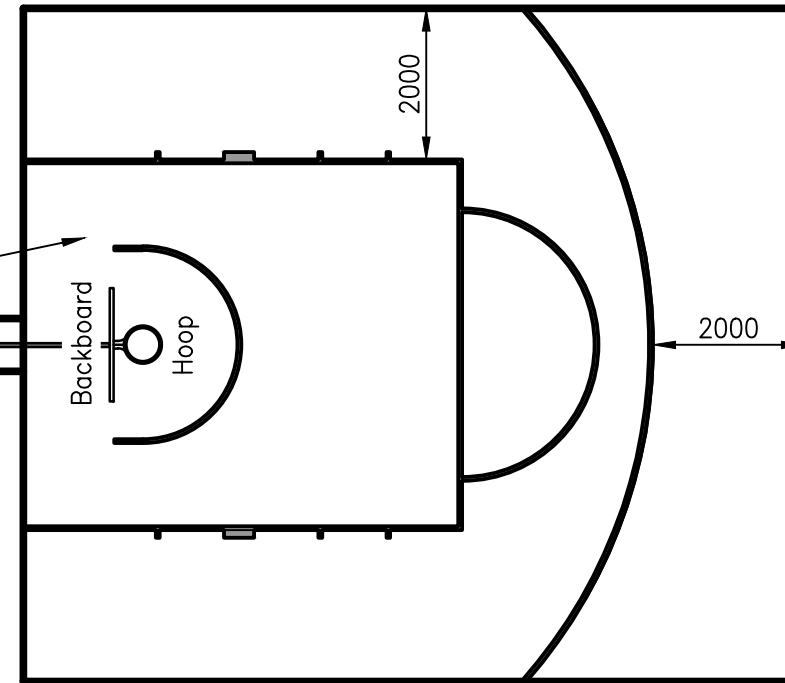


**TYPE 1 - BASKETBALL HALFCOURT PLAN**  
Scale A

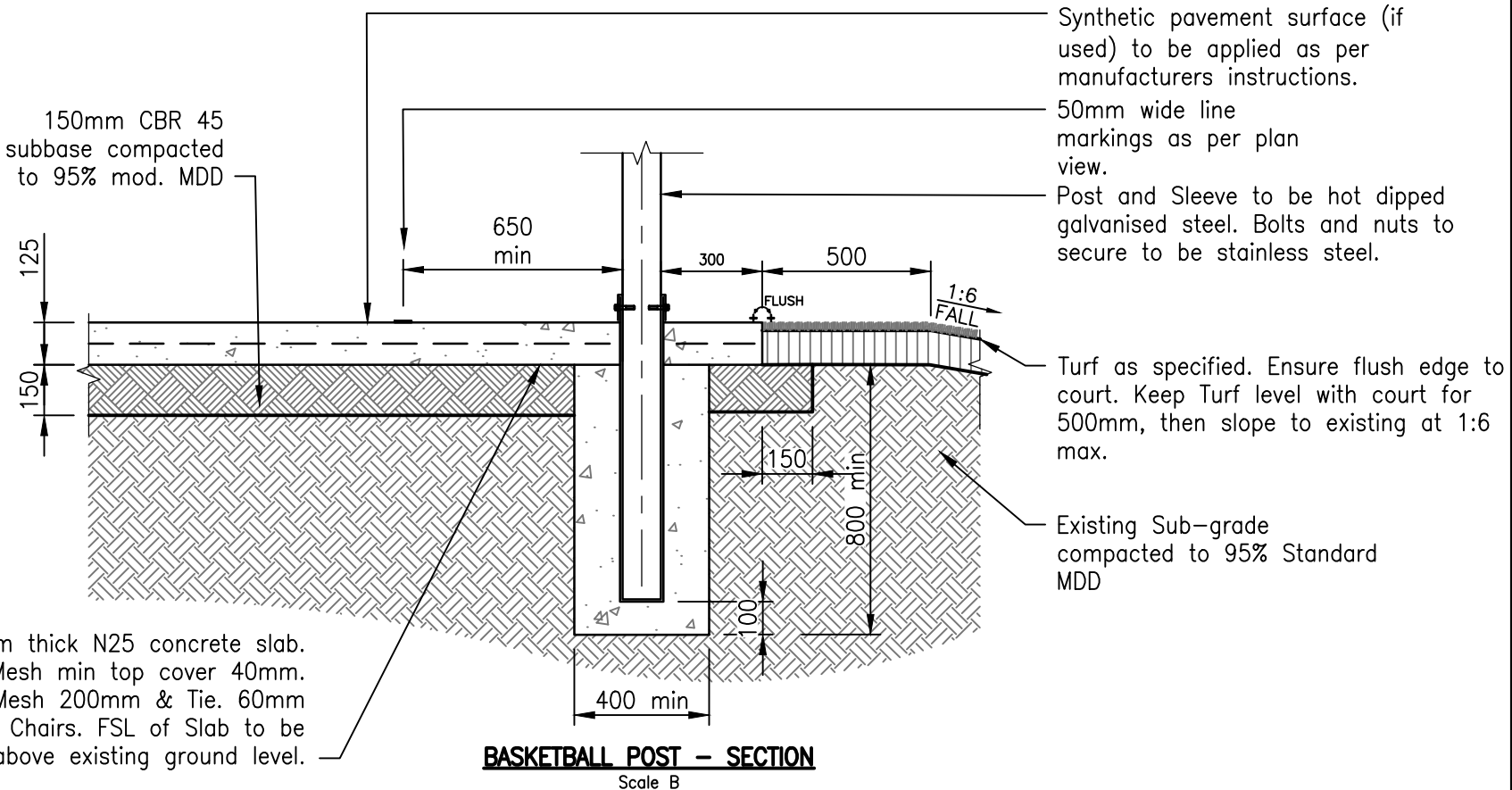
Court dimensions are in accordance with Basketball Queensland Ltd. Official Court Markings Guideline

Pole on concrete pad



**TYPE 2 - BASKETBALL SHOOTING BOX PLAN**  
Scale A

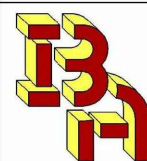
150mm CBR 45 subbase compacted to 95% mod. MDD



**BASKETBALL POST - SECTION**  
Scale B

The structural work shown on this drawing is considered to be structurally sound, and suitable for the design loads.

All construction to be as per current Australian Standards and Building Codes, in accordance with MBRC requirements, and in a professional and tradesmanlike manner



**IAN BARNES & ASSOCIATES P/Ltd**  
CONSULTING ENGINEERS ABN 70 057802490  
P.O. Box 1378 Office : 07 5495 8444  
CABOOLTURE 4510 Mobile : 0418 873 320

RPEQ 3333 Date : 13/09/2017

Refer to PN-6670 for Basketball Court Specifications

125mm thick N25 concrete slab.  
SL82 Mesh min top cover 40mm.  
Lap Mesh 200mm & Tie. 60mm  
Bar Chairs. FSL of Slab to be 150mm above existing ground level.

REVISIONS	INIT	DATE
E		
D		
C		
B	TC	7/17
A	RH	12/16
ORIGINAL ISSUE	VC	07/16

SCALES
A 0mm 500 1000 1500 2000 1:100
B 0mm 100 200 300 400 1:20

Drawn	VC	Date	07/16
Coordinator	WM	Date	07/16
AUTHORISED			
<b>SYD JERRAM</b> 07/07/16			
Manager Integrated Transport Planning & Design RPEQ 6872			

**BASKETBALL HALFCOURT  
SHEET 2 OF 2  
PLANS AND POST SECTIONS**

**Moreton Bay  
Regional Council**

DRG No. **PN-6671**

ORIGINAL SIZE **A3** REVISION **B**