

**SECTION 1**  
Scale A

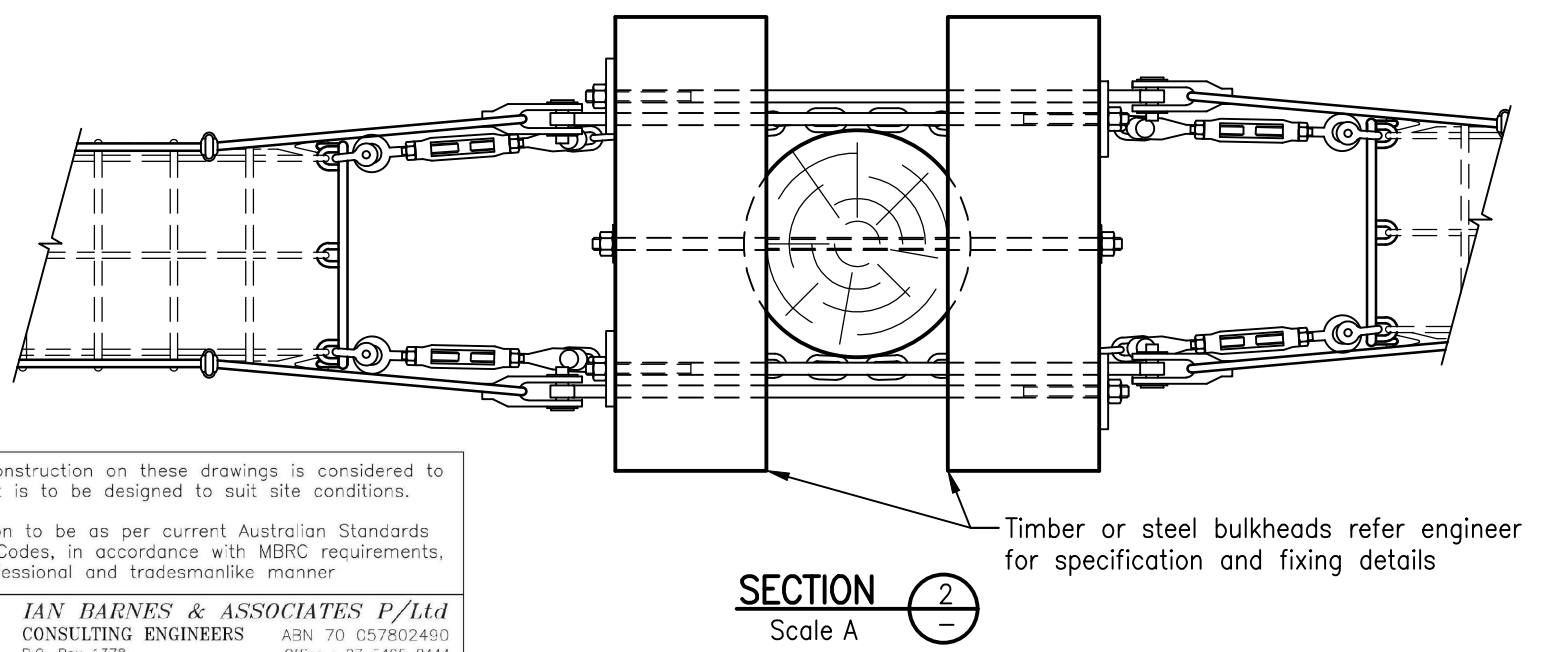
The typical construction on these drawings is considered to be sound, but is to be designed to suit site conditions.

All construction to be as per current Australian Standards and Building Codes, in accordance with MBRC requirements, and in a professional and tradesmanlike manner

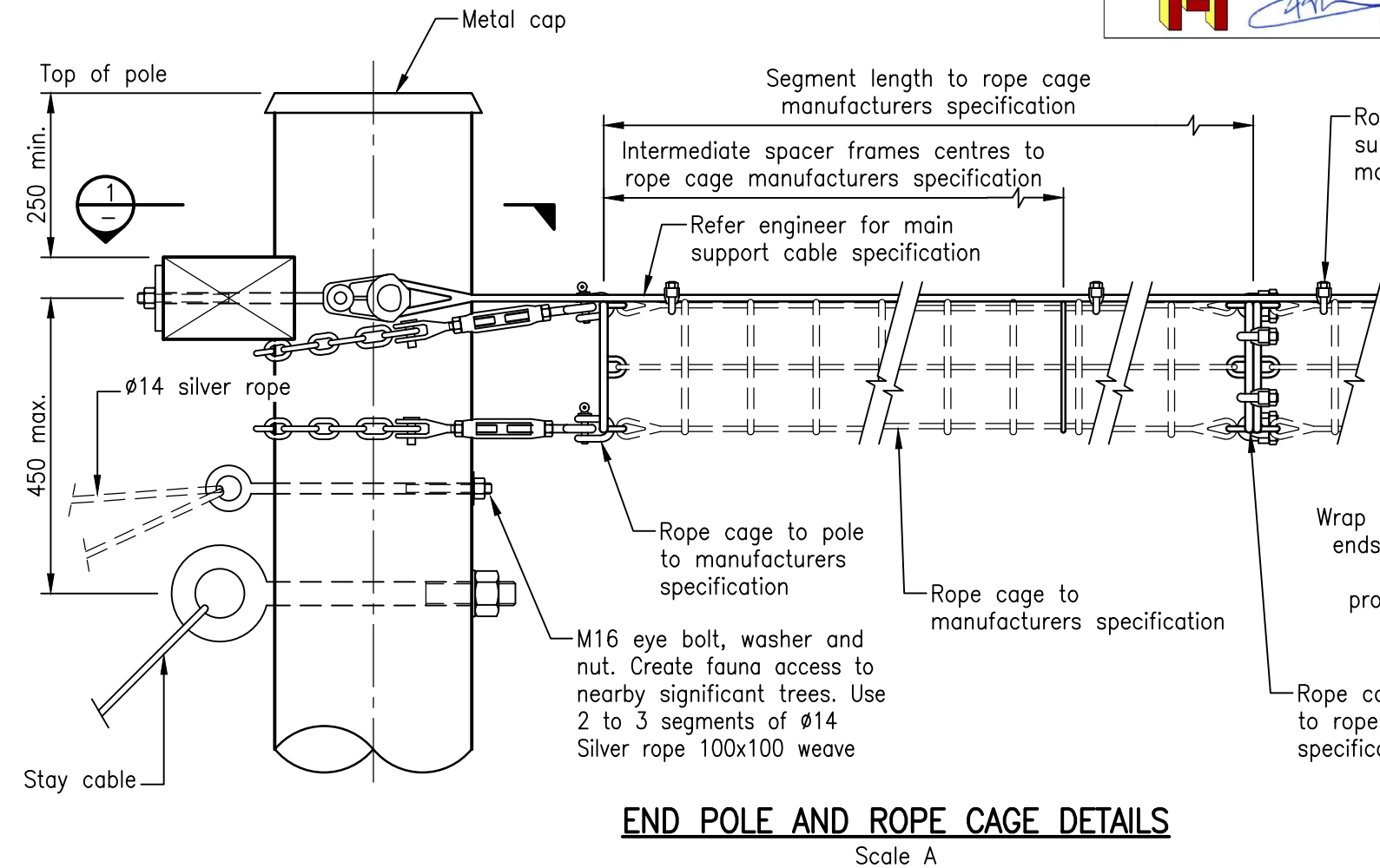
**IAN BARNES & ASSOCIATES P/Ltd**  
CONSULTING ENGINEERS  
P.O. Box 1378  
CABOOLTURE 4510

ABN 70 057802490  
Office : 07 5495 8444  
Mobile : 0418 873 320

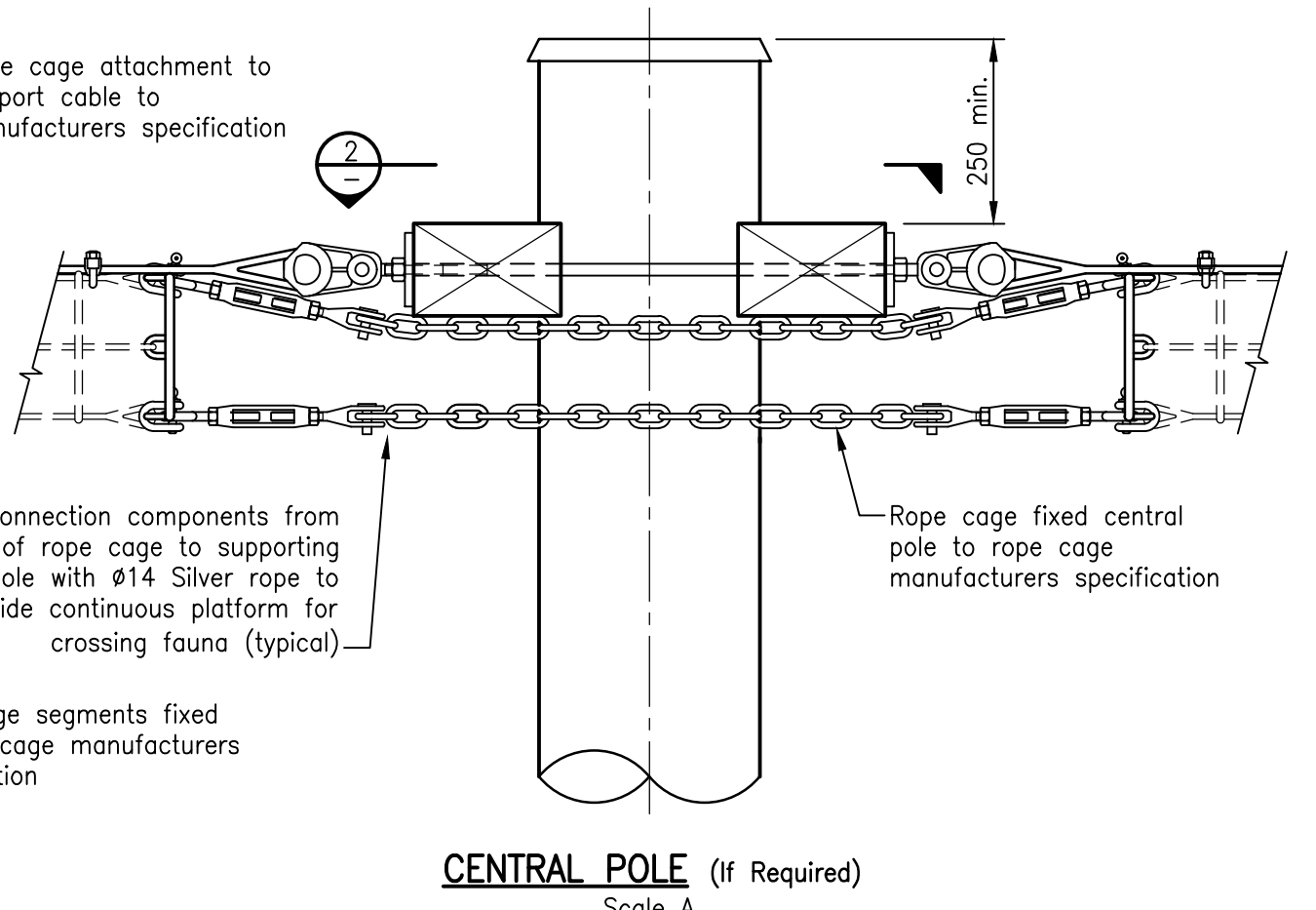
RPEQ 3333 Date : 13/09/2017



**SECTION 2**  
Scale A

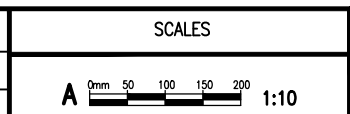


**END POLE AND ROPE CAGE DETAILS**  
Scale A



**CENTRAL POLE (If Required)**  
Scale A

REVISIONS	INIT	DATE
E		
D		
C		
B	TC	7/17
A	RH	12/16
ORIGINAL ISSUE	BW	07/16



Drawn	BW	Date	07/16
Coordinator	PP	Date	07/16
AUTHORISED			
<b>SYD JERRAM</b> 07/07/16			
Manager Integrated Transport Planning & Design RPEQ 6872			

**FAUNA CROSSING - ROPE CAGE DETAILS**

**Moreton Bay Regional Council**

DRG No. **GI-0562**

ORIGINAL SIZE **A3** REVISION **B**