

- LEGEND**
- PS1 Pump Station
  - TM Trunk Gravity Main
  - RM Rising Main
  - ③ Catchment Number
  - Freshwater Creek Catchment (Part)
  - Saltwater Creek Catchment (Part)
  - Catchment Boundary
  - DCP Area Boundary
  - Town Centre Frame 'H' Precinct
  - Generalised Sector Area

**PRINCIPAL DEVELOPER WORKS**

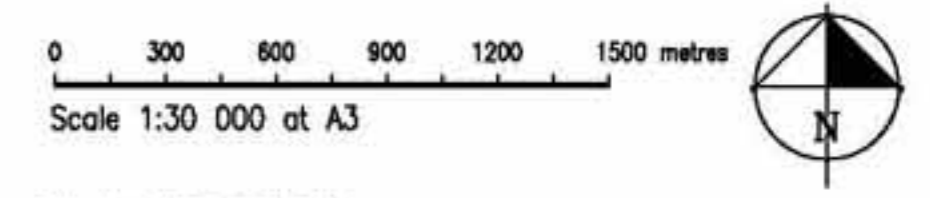
WORKS	DIAMETER (mm)	LENGTH (m)
<b>TRUNK MAINS</b>		
TM1	450	450
	375	650
	300	500
TM4	450	1500
TM4A	375	1350
TM4B	375	1000
TM5	300	750
TM6	375	700
TM6A	300	700
<b>GRAVITY TRUNK SEWER</b>		
GTS4	600	1950
GTS5	450	1500
GTS6	375	800
<b>RISING MAINS</b>		
RM1	375	5500
RM2	525	7200
RM115	150	1050
<b>PUMP STATIONS</b>		
PS1		
PS2		

**EQUIVALENT PERSONS**

Catchment	Within DCP Area	Outside DCP Area	Total
Catchments 1&2	8250 EP	3726 EP	11976 EP
Catchments 3,4,5,6 & 8	22395 EP	6027 EP	28422 EP
Catchment 7	1063EP		
<b>TOTAL</b>	<b>31708 EP</b>		

**Town Centre Frame 'H' Precinct  
Town Centre Frame 'H' Sector Two**

**SEWERAGE HEADWORKS**



File No 2836-032/2000  
Dwg TCFHSectorFig9  
September 2008

FIGURE 9