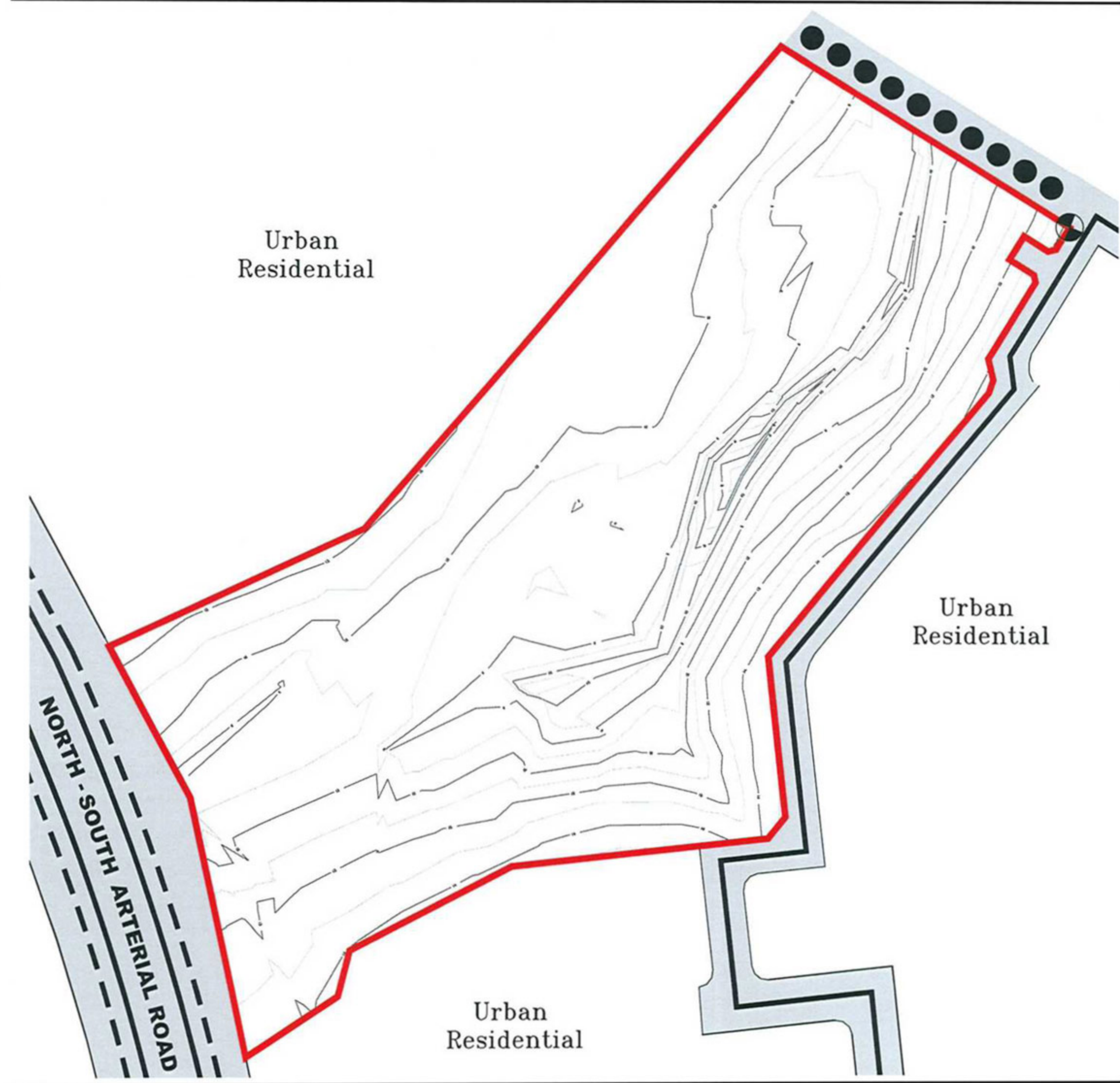
 Point of Commencement  
 AMG Coordinates (Zone 56)  
 Easting 500200.812  
 Northing 6990086.833

See Appendix F for Metes and Bounds Description

 Existing Contours ( 1m interval )



Northern Residential South Eastern Precinct  
 Northern Residential South Eastern Sector Three  
**CADASTRAL BOUNDARIES**



File No 2836-NRE  
 Dwg NRESectorFig2  
 January 2010

FIGURE 2