

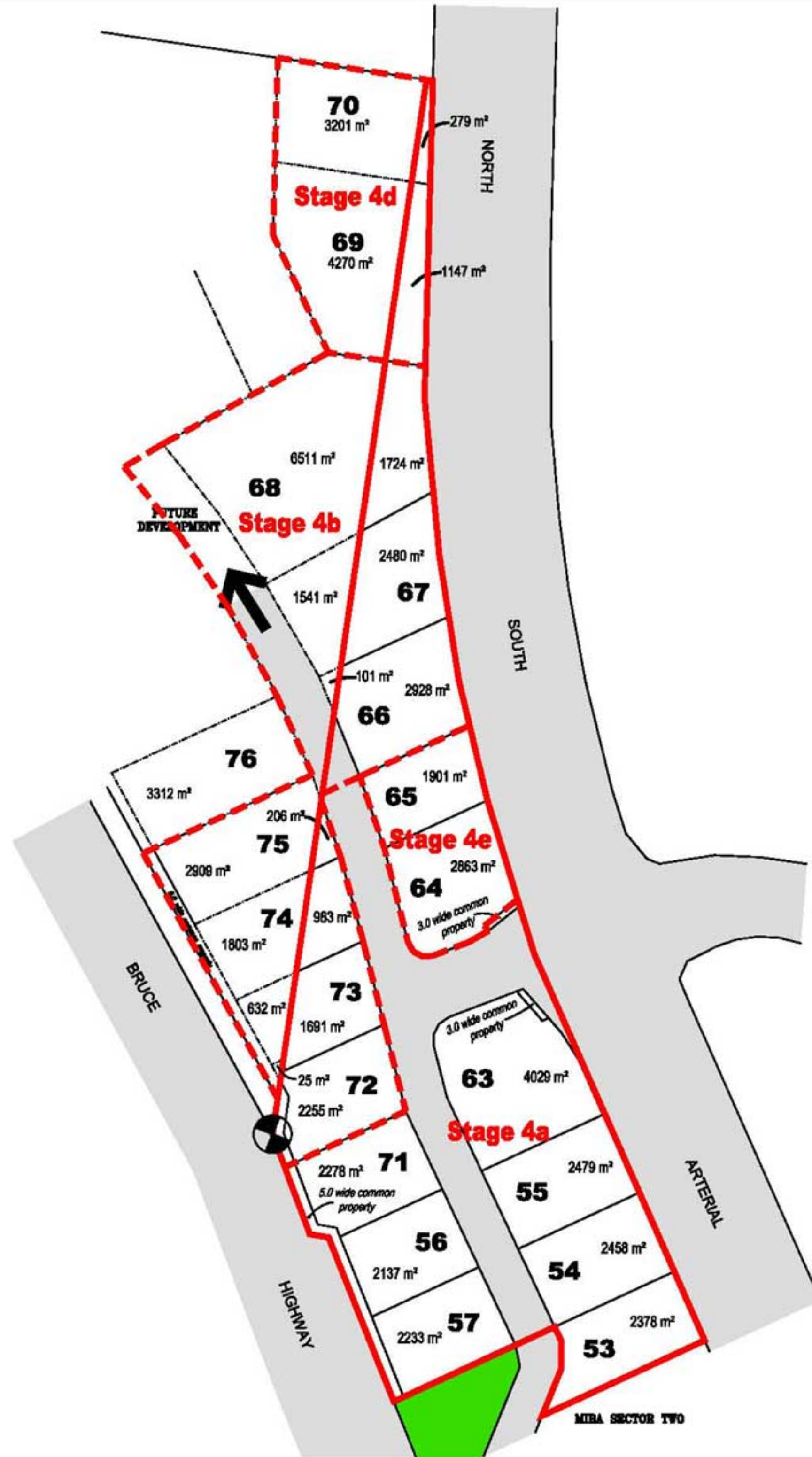
 Point of Commencement  
 AMG Coordinates (Zone 56)  
 Easting 499776.146  
 Northing 6988847.298

See Appendix E for Metes and Bounds Description

 Existing Contours ( 1m interval )

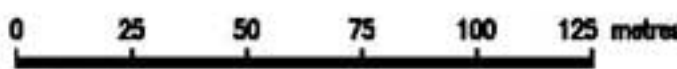
 INTERNAL ACCESS POINT

 MAJOR OPEN SPACE



Mixed Industry & Business Area South Precinct  
 Mixed Industry & Business Area South Sector Four

**CADASTRAL BOUNDARIES**

 0 25 50 75 100 125 metres  
 Scale 1:2500 at A3



File No 2836-030S4  
 Dwg MB4sectorfig2  
 October 2013

FIGURE 2