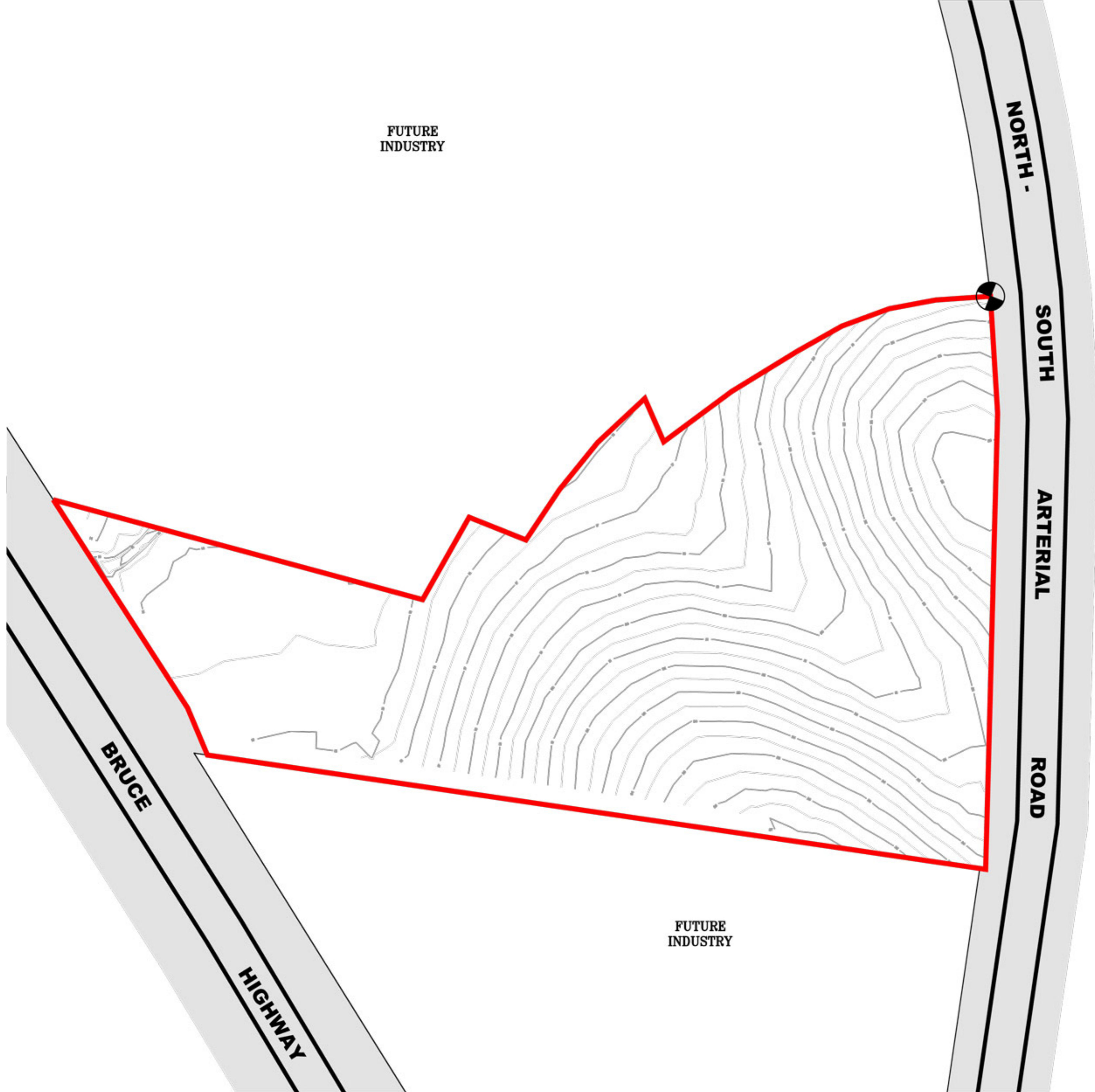
 Point of Commencement
AMG Coordinates (Zone 56)
Easting 499852.640
Northing 6989620.747

See Appendix F for Metes and Bounds Description

 Existing Contours (1m interval)



Mixed Industry & Business 'A' Precinct
Mixed industry & Business 'A' Sector Two

CADASTRAL BOUNDARIES

