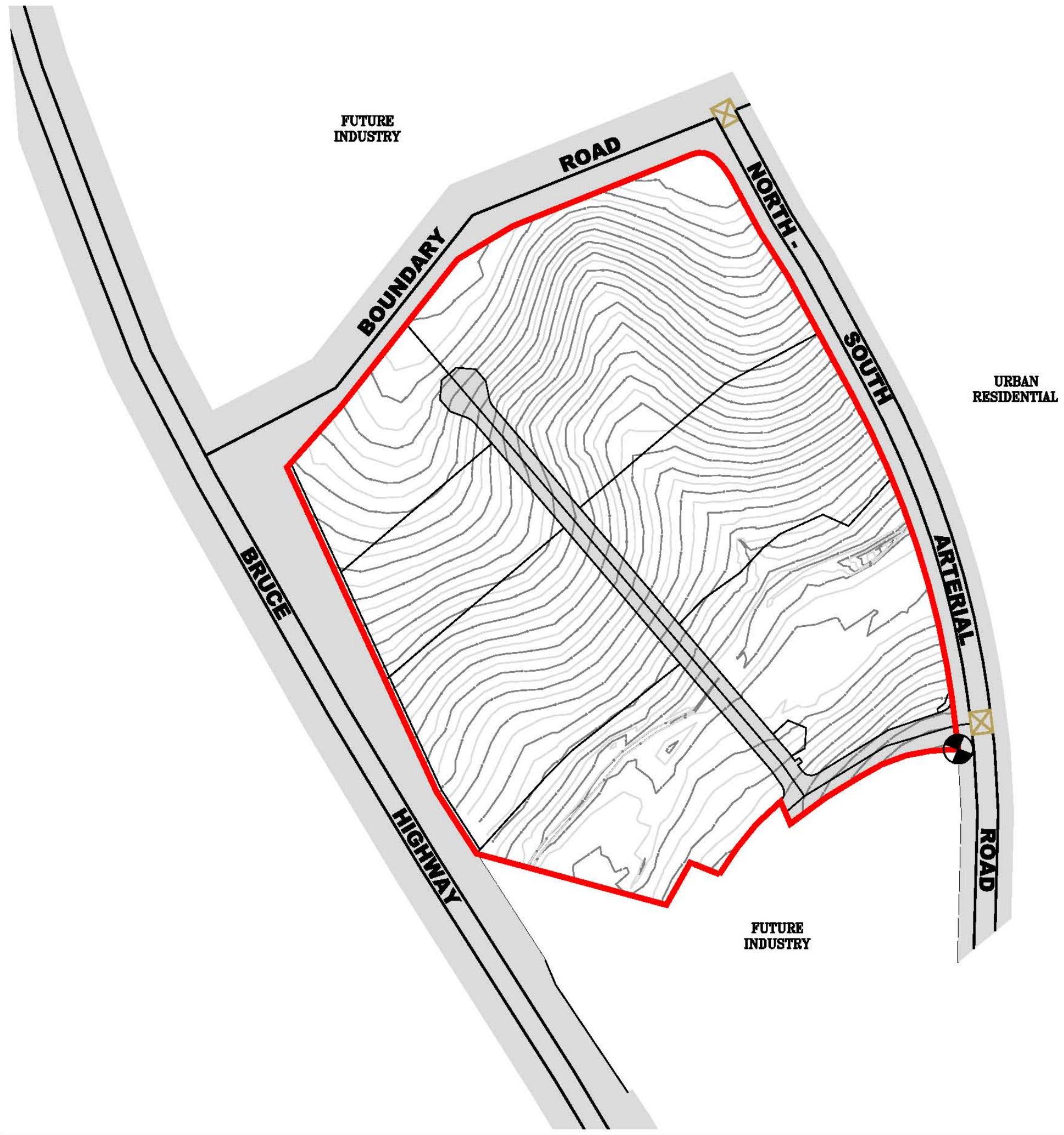


 Point of Commencement  
 AMG Coordinates (Zone 56)  
 Easting 499852.640  
 Northing 6989620.747

See Appendix F for Metes and Bounds Description

 26 Existing Contours ( 1m Interval )



**Mixed Industry & Business 'A' Precinct**  
**Mixed industry & Business 'A' Sector One**  
**CADASTRAL BOUNDARIES**

